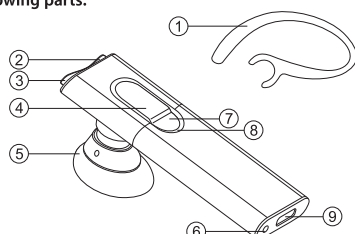


H900D Bluetooth Wireless Headset

1 What's in the box

The headset contains the following parts:

1. Ear Hook
2. Volume Down Button
3. Volume Up Button
4. Multi-function Button
5. Speaker
6. Microphone 1
7. Indicator Light
8. Microphone 2
9. Charging Socket



Package contents list:

Item Name	Quantity
A. H900D Bluetooth Headset.....	1
B. Travel Charger.....	1
C. Charging Cable.....	1
D. User Manual.....	1

1

NOTE:

- If the pairing is successful, the headset will connect to your phone automatically, you may need to confirm the enquiry.

- While the headset is paired with the phone and connected, the indication light will flash 2 times every 5 seconds. If failed or didn't connect to the phone, the blue indicator light will flash 1 time every 3 seconds.

- Once you paired the headset with one device or more, the Headset will automatically connect to the phone you last connected wherever you turn the headset on, but make sure your phone's Bluetooth function is active.

- The headset supports Bluetooth v2.1+EDR specification, the simplified pairing process will make pairing your devices easily, if your mobile phone supports Bluetooth v2.1+EDR specification, you just need turn on both of them, and add new Bluetooth device on your phone, the headset and your phone will find each other and connect automatically.

- The headset supports multi-point technology. If you need connect the headset to the 2 Bluetooth phone, please repeat the pairing operation steps above. When finish the pairing, turn off the headset and turn on again, the headset will connect to the both 2 phones automatically.

3

4 Battery information

Your device is powered by a chargeable battery. The full performance of a new battery's an achieved only after two or three complete charge and discharge cycle. The battery can be charged and discharged hundreds of times, but it eventually wear out. Unplug the charger from the electrical plug and the device when not in use. Do not leave a fully charged battery connected to a charger, since overcharging may shorten its lifetime. If left unused, a fully charged battery will lose its charge over time. If the headset would be leave unused for a long time, please charge fully and turn off the headset. To prevent over discharge endangering the battery, you are recommended to charge the headset fully each month. Never use any other charger that is damaged.

5 Turning headset on /off

*Turn on the headset

If the headset is turned off, press and hold MFB for 2 seconds until you hear a melody from low to high, the headset turns on, the Blue indicator light will flash 3 times at the same time.

*Connects to the phone

1. If your headset has finished the pairing operation successfully, when the headset is turned on, it will connect to the phone(s) you last connected automatically, but make sure your phone's Bluetooth function is active.
2. The headset supports multi-point and connects to 2 phones at the same time. In some operations, you need to distinguish the connection sequence, so we appoint the phone first connected as phone 1, the second one as phone 2.

5

7 Making a call

* By phone's keypad

At the stand-by state, dial the number on your phone directly to make a call.

* Use Voice-Dialing

At the stand-by state, press the MFB shortly, you will hear a short tone from the headset, and the phone will prompt you say the voice tag like your friend's name. If the voice tag is identified by the phone, the related number will be dial-out later.

Make sure whether your mobile phone supports voice dialing function, and you need to set up voice tags on your mobile phone first. If the headset has connected to 2 phones, double press the MFB will start Voice-Dialing of phone 2.

* Last number re-dialing

Press and hold Volume Down button for 2 seconds, you will hear 2 short tones, the last number you dialed will be re-dial out. If the headset has connected to 2 phones, press and hold Volume Up button for 2 seconds will start last number re-dialing of phone 2.

NOTE

- If the headset has connected to 2 phones, when one phone has active a call, the headset will disconnect to other phone temperately, when you end the call the headset will re-connect it automatically, please make sure your phone's Bluetooth function would not be inactive during the calling.

7

* While you are in the calling and another call was holding on, press MFB shortly can end current call and resume the holding on calling.

* While you are in the calling and another call was holding on, press and hold MFB for 2 seconds can shift the current calling to the holding on calling.

* While you are in the calling and another call was holding on, press Volume Up button shortly can add the holding on call to the current conversation to make a multiparty call.

* While you are in the calling and another call was holding on, or you are in a multiparty calling, double press MFB can end the calling or remove yourself from the multiparty calling.

13 Volume control & Mute function

While you are in the calling, you can adjust the volume by pressing volume up and volume down button or you can adjust the volume on your mobile.

14 Mute

While you are in the calling, Press and hold the Volume Down Button for 2 seconds, you will hear a melody from low to high, then the headset's MIC will be muted, and you will hear remindful melody every 10 seconds. Repeat the operation your will hear the melody from high to low, the mute function is cancelled.

9

Button	ACTION	HEADSET STATUS	
		1 Call Active, 1 Incoming Call	1 Call Active, 1 Call on Hold
Multi-function Button	Quick Press	Answer incoming call, end active call	End active call, retrieve held call
	Double press		End all of the calls
	2 Seconds	Answer incoming call, hold active call	Shift Calls
	4 Seconds	Turn headset OFF	Turn headset OFF
Volume Up	Quick Press	Increase volume	Add held call to TWC
	2 Seconds	--	Transfer active calling to/from phone
	4 Seconds	--	--
Volume Down	Quick Press	Decrease volume	Decrease volume
	2 Seconds	--	--
	4 Seconds	--	--

11

17 FCC & IC Statement

Operation is subject to the following two conditions:

- (1) This device may not cause harmful interference, and
- (2) This device must accept any interference received, including interference that may cause undesired operation.

Note: The manufacturer is not responsible for ANY interference, for example RADIO or TV interference, caused by unauthorized modifications to this equipment.

Such modifications could void the user's authority to operate the equipment.

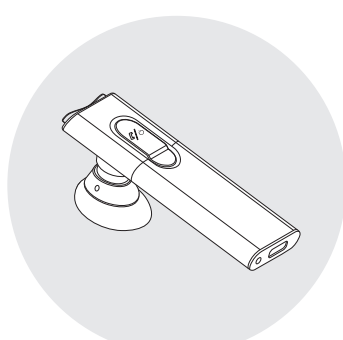
18 EU

This product is CE certified according to the provision of the R&TTE Directive (99/5/EC). Declares that this product is in compliance with the essential requirements and other relevant provisions of Directive 1999/5/EC.

Please note that this product uses radio frequency bands not harmonized within EU. Within the EU this product is intended to be used in Austria, Belgium, Denmark, Finland, France, Germany, Greece, Ireland, Italy, Luxembourg, The Netherlands, Portugal, Spain, Sweden, United Kingdom and within EFTA in Iceland, Norway and Switzerland.

Bluetooth is a trademark owned by the BluetoothSIG, Inc.

13



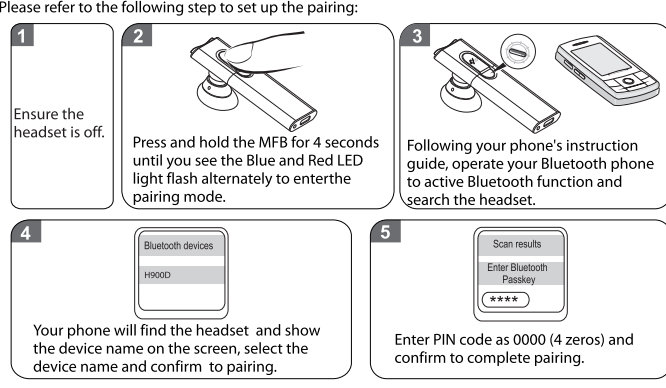
Made in China

Contents

What's in the box	1
Pair to your Bluetooth phone	2
Charging the battery	4
Battery information	5
Turning headset on /off	5
Wearing your headset.....	6
Making a call	7
Ending a call	8
Reject an incoming call	8
Answering a call	8
Transferring a call	8
Call-waiting (Three-Way Calling)	8
Volume control	9
Mute.....	9
Summary of button operation	10
Safety and general information	12
FCC & IC Statement	13
EU	13
Warranty	14

2 Pair to your Bluetooth phone

Before you use your headset the first time, you must pair the unit with a Bluetooth device e.g. Bluetooth mobile phone. This operation guide based on the Bluetooth phone as the host's device. Please refer to the following step to set up the pairing:

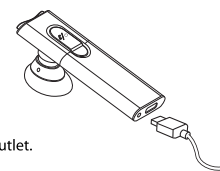


2

3 Charging the battery

This headset has an internal, non-removable, rechargeable battery. Do not attempt to remove the battery from the device as you may damage the device. Please refer to the following step to charge the battery:

1. Connect the charger to the correct outlet.
2. When the charger is connected to headset, the red indicator light will turn on during charging. If charging does not start, disconnect the charger, plug it in again. Charging the battery fully may take up to 2 hours.
3. When the battery is fully charged, the red indicator light will turn off. Disconnect the charger from the headset and the wall outlet. The headset is ready to use.



NOTE:

- The fully charged battery has power for up to 4-6.5 hours of talk-time or up to 120-150 hours of standby time. However, the talk and standby times may vary when used with different mobile phones or other compatible Bluetooth devices, usage settings, usage styles, and environments.
- When battery power is low, the headset will remind you by beeps every 20 seconds, and the red indicator light starts to flash.
- For first time use, please charge the headset fully. If you can not see the indicator light while charging, please leave the headset on the charging for a while, then the indicator light will turn on.

4

*Turn off the headset

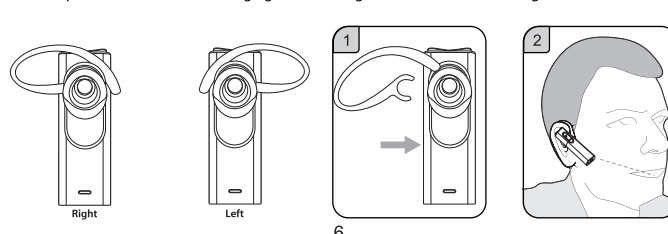
At any working state after the headset turns on, press and hold MFB for 4 seconds, you will hear a melody from high to low, and the Red indicator light will flash 3 times at the same time, the headset turns off.

Note

- For saving the power, while the headset didn't connect to any device over 1 hour, the headset will turn off automatically.

6 Wearing your headset

The headset can be worn on either the Left or Right ear. If you want to carry the headset on the other ear, please refer to the following figures to change the direction of the ear gel:



6

8 Ending a call

When in the calling, press the MFB shortly will end the call, also you can end call on your mobile.

9 Reject an incoming call

When you receive an incoming call, press and hold MFB for 2 seconds will reject the incoming call.

10 Answering a call

When you receive an incoming call, press the MFB shortly can pick up the incoming call; also you can pick up the call on your mobile.

11 Transferring a call

When in the calling, press and hold Volume Up button for 2 seconds can transfer the call from headset to phone. Repeat the operation can transfer the call between the phone and headset each other.

12 Call-waiting (Three-Way Calling)

Before using Call-waiting function on your headset, please ensure that your phone supports the Hands-free profile, and you have been provide the service by the net provider.

* If there is another incoming call while you are in the calling, press MFB shortly can accept the waiting call and end current calling.

* If there is another incoming call while you are in the calling, press and hold MFB for 2 seconds can accept the waiting call and hold on current calling.

8

15 Summary of button operation

Button	ACTION	HEADSET STATUS		
		Standby (No Calls Active)	Incoming Call	1 call Active
Multi-function Button	Quick Press	Initiate voice dialing	Answer incoming call	End a call
	Double Press	Initiate Voice dialing of phone 2	--	--
	2 Seconds	--	Reject incoming call	--
	4 Seconds	Turn headset OFF	Turn headset OFF	Turn headset OFF
Volume Up	Quick Press	Increase volume	Increase volume	Increase volume
	2 Seconds	Re-dial last number of phone 2	--	Transfer the active calling to/from phone
	4 Seconds	--	--	--
Volume Down	Quick Press	Decrease volume	Decrease volume	Decrease volume
	2 Seconds	Re-dial last number	--	Microphone mute ON/ OFF
	4 Seconds	--	--	--

10

16 Safety and general information

1. Please read this guidebook carefully and follow the instructions.
2. To avoid any damage or malfunction of the device do not drop device from high places.
3. Keep device away from humidity, water and any other liquid. If the device is exposed to water, moisture and other liquid, do not operate it to avoid any electrical shock, explosion and damage to the device or yourself.
4. Do not place or keep this device near any heat sources, such as, direct sun light, radiators, stoves or other apparatus which produce heat. It may cause explosion, degrade the performance and/or reduce battery life.
5. Do not modify, repair or disassemble device at discretion (Especially battery: It may cause an explosion). Doing this will avoid the warranty.
6. Do not place the heavy objects on the device.
7. Use only supplied and approved charger.
8. Replacement or service must be done by qualified service center or manufacturer.
9. Unplug this device when unused for long periods of time or during lightning storms.



CAUTION: ELECTRIC SHOCK HAZARD

The battery used in this device may present a risk of fire or chemical burn if mistreated.

12

19 Warranty

The condition of this warranty and our responsibilities under this warranty are as follows: Warranty is non-transferable and is limited to the original purchaser only.

* You must be able to prove the date of original purchase of the unit with a dated receipt.

* The warranty is not applicable if the product has been subject to physical abuse, improper installation, modification or repair by unauthorized third party.

* The responsibility of suppliers products shall be limited to the repair or replacement of the product at its sole discretion.

* Specifically exempt from any warranty are limited-life consumable components subject to normal wear and tear such as batteries, earbuds and other accessories.

* Supplier will not take any responsibility if the failure of the unit has resulted from accident, abuse, misuse, or any unauthorized repair, modification or disassemble.

* Modification and repair of the unit should be done by authorized and qualified service center or returned to the manufacturer

* This warranty gives you specific legal rights, and you may also have other rights which vary under local laws.

14

FCC Warning

This device complies with Part 15 of the FCC Rules. Operation is subject to the following two conditions:

(1) this device may not cause harmful interference, and (2) this device must accept any interference received, including interference that may cause undesired operation.

NOTE 1: Any changes or modifications to this unit not expressly approved by the party responsible for compliance could void the user's authority to operate the equipment.