

User' s Manual (Rev1.1)

*AT570W*

*Windows CE® .NET Ruggedized PDA*

---

ATID Co., Ltd.

ATID Co., Ltd.  
#1210, Byuksan/GyungIn Digital Valley II, #481-10,  
Gasan-Dong, Gumchon-Gu, Seoul, Korea  
Telephone: +82-2-544-1436  
Fax: +82-2-2113-0040  
[www.atid1.com](http://www.atid1.com)

Copyright ©2006 ATID Co., Ltd. An Unpublished  
Work – All right reserved. No part of the contents of this documentation or the procedures  
described there in may be reproduced or transmitted in any form or by any means without prior  
written permission of ATID Co., Ltd.. or its wholly owned subsidiaries ("ATID "). Owners of ATID  
products are hereby granted

a non-exclusive, revocable license to reproduce and transmit  
this documentation for the purchaser's own internal business purposes.

Purchaser shall not remove or alter any proprietary notices, including copyright notices,  
contained in this documentation and shall ensure that all notices appear on any reproductions  
of the documentation.

Should future revisions of this manual be published, you can acquire printed versions by  
contacting

ATID Customer Administration. Electronic versions may either be downloadable from the ATID  
web site ([www.atid1.com](http://www.atid1.com)) or provided on appropriate media. If you visit our web site and  
would like to make comments or suggestions about this or other ATID publications, please let  
us know via the “ Contact ATID ” page.

#### Disclaimer

Reasonable measures have been taken to ensure that the information included in this manual is  
complete and accurate. However, ATID reserves the right to change any specification at  
anytime without prior notice.

ATID is a registered trademark of ATID Co., Ltd..

The ATID logo is a trademark of ATID . All other trademarks and trade names referred to herein  
are property of their respective owners.

AT570 is a registered trademark of ATID Co., Ltd.. and of its wholly owned subsidiaries.

Microsoft Windows®, Windows® 2000, Windows® CE .NET, Windows® NT, and Windows® XP  
are registered

trademarks of Microsoft Corporation.

# Contents

Before You Begin .....	6
Chap1. Using The AT-570.....	7
1. Introducing.....	7
1.1 Features.....	7
1.2 View of the PDA #1.....	8
1.3 View of the PDA #2.....	9
1.4 Table Features Function/Description.....	10
2. Power.....	12
2.1 Power ON/OFF.....	12
2.1.1 Power ON.....	12
2.1.3 What is idle mode?.....	12
2.1.4 Suspend mode.....	13
2.2 Battery.....	13
2.2.1 Checking Battery Power.....	13
2.2.2 Very Low Battery Status.....	13
2.3 Removing and installing the battery.....	13
2.3.1 Removing the battery.....	13
2.3.2 Installing the battery.....	13
2.4 Battery discharging.....	13
2.5 Recharging the battery.....	13
2.5.1 Using the adapter.....	13
2.5.2 Using the Dock.....	14
2.6 Backup Battery.....	15
2.7 Disposal of spent battery.....	15
3. Setting up the AT-570 .....	16
3.1 Power.....	16
3.2 Power Off.....	16
3.3 Adjusting Brightness.....	16
3.4 Calibrating up the screen.....	17
3.5 Adjusting Volume.....	17
3.6 Setting Date and Time.....	18
3.7 Power Configuration.....	18
3.8 Schemes Tab.....	18
3.9 Memory Allocation.....	19
4. Resetting the PDA .....	20
4.1 Warm Reset.....	20
4.2 Hard Reset (cold reset).....	20
5. Flash Disk.....	21
5.1 Hard reset.....	21
5.2 Warm reset.....	22
5.3 Returning back to the existed place.....	23
6. Registry Backup.....	24
7. Using the keypad.....	25

7.1 Change current character .....	25
7.2 Inputting data .....	25
7.3 Setting device though the <Fn> key .....	26
<b>8. Using the stylus .....</b>	<b>26</b>
<b>9. Using the Hand-strap and Gun hand-held .....</b>	<b>27</b>
<b>Chap 2. Windows Program.....</b>	<b>28</b>
<b>1. Basic Information .....</b>	<b>28</b>
1.1 Task Bar and Command Bar .....	28
1.2 Pop-up Menus .....	29
<b>2. Executing a Program .....</b>	<b>29</b>
<b>3. Entering information.....</b>	<b>29</b>
3.1 Using the Onscreen keypad .....	29
3.2 Using Transcriber .....	30
<b>4. Customizing Your AT-570.....</b>	<b>31</b>
4.1 Adjusting settings .....	31
4.2 Adding or Removing Programs .....	31
4.3 Adding Programs Using ActiveSync .....	31
4.5 Removing Programs .....	32
<b>5. Microsoft ActiveSync.....</b>	<b>32</b>
5.1 Using Microsoft ActiveSync .....	32
5.2 Installing Microsoft ActiveSync on your desktop.....	32
5.3 Setting up a Partnership.....	33
5.4 Transferring Files.....	33
<b>6. Microsoft WordPad .....</b>	<b>33</b>
<b>7. Window Media Player .....</b>	<b>34</b>
<b>8. Internet Explorer .....</b>	<b>34</b>
<b>9. Context Sensitive Help .....</b>	<b>35</b>
<b>Chap 3. Optional Module (Version 1.1).....</b>	<b>36</b>
<b>1. 1D barcode Scanner.....</b>	<b>37</b>
1.1 AT1DTScanner(Demo program).....	37
1.2 Setting up the AT1DEmulator .....	40
1.3 Setting up the 1D Barcode Symbology.....	42
<b>2. 2D barcode Scanner.....</b>	<b>44</b>
2.1 Reading 2D barcode & Symbology Setting .....	44
2.2 Setting the AT2DEmulator .....	46
2.3 Scanning Barcode.....	48
<b>3. Wireless LAN .....</b>	<b>50</b>
3.1 Making Wireless LAN ON.....	50
3.2 IP Information .....	51
3.3 Setting with manual method.....	52
3.4 Making WLAN Off .....	52
<b>7. GPS Module .....</b>	<b>53</b>
7.1 Executing the GPS .....	54
7.2 Configuring the Port and Baud Setting for Executing the GPS.....	54

7.3 Checking up the GPS status .....	56
<b>9. Using Camera.....</b>	<b>57</b>
9.1 To use your Camera:.....	57
9.2 Camera Screen .....	57
<b>Chap 4. USER INFORMATION 오류! 책갈피가 정의되어 있지 않습니다.</b>	

# Before You Begin

This section provides you with safety information, technical support information, and sources for additional product information

## Who should read this manual?

This manual is written for the person who is responsible for installing, configuring, and maintaining the AT-570W.

This manual provides you with information about the features of the AT570W, and how to install, configure, operate, and maintain it.

Before you work with the AT570W, you should be familiar with your network and general networking terms, such as IP address.

## Safety information

Your safety is extremely important. Read and follow all warnings and cautions in this document before you handle and operate ATID equipment. You can be seriously injured, and equipment and data can be damaged if you do not follow the safety warnings and cautions.

### WARNING

A warning alerts you to an operating procedure, practice, condition, or statement that must be strictly observed to avoid serious injury to the person who working on the equipment

### CAUTION

A caution alerts you to an operating procedure, practice, condition, or statement that must be strictly observed to prevent equipment damage or destruction, or corruption or loss of data.

### NOTICE

A notice makes you have more information while you use AT-570W

# Chap1. Using The AT-570W

This chapter introduces the AT570 Mobile Computer to enhance wireless connectivity needs and contains hardware and software configuration to assist you in making the most out of your AT570W

## 1. Introducing

The ATID AT570 mobile computer is a small, ergonomically designed mobile computer built on the Microsoft window CE NET 5.0 operating system. The PDA uses an Intel® Bulverde microprocessor and a 3.5" VGA, color

Touch screen display. The PDA supports RF wireless LAN 802.11b.g(embedded module) for communication

### 1.1 Features

Remove all the items from the packing box, and check to make sure all the parts are present:

1



3



2



1. AT570 PDA
2. Power Adaptor
3. Lithium Ion Battery Pack
4. Synchronization Cable
5. Stylus
6. Hand strap

4



5



6



Figure 1. In the Packing box

## 1.2 View of the PDA #1

Refer to Table 1 for a list and description of the illustrated features.



Figure 2. Front View



Figure 3. Side view



1.3 View of the PDA #2

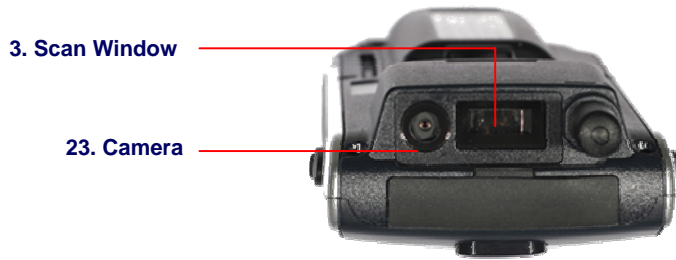


Figure 4. Top view



Figure 5. Bottom view



Figure 6. Rear view

## 1.4 Table Features Function/Description

Features	Function/Description
1.LCD/Touchscreen	LCD touch screen displays information and data. You can see the results of your work through the LCD touch screen. The AT570 has a stylus you can use to select items and enter information. <b>Caution: Do not use a pen, pencil, or other sharp object on the AT570's touch screen. Use only the supplied stylus or plastic-tipped pens intended for use with a touch-screen sensitive display.</b>
2.Scan key (Left and Right)	Use either the right or left <Scan> button to activate the scanner and read a bar code. The scanner starts to read the bar code. The scanner automatically turns off either when the barcode is read, when you release the scan button, or after 10 seconds, whichever comes first.
3.Scan Window	The scanning beam is emitted from this aperture. Aim the scanning beam at the bar code you wish to scan. Refer to "Scanning Bar Codes" on page 23 for more information.
4. WLAN ON/OFF display light	It makes you know that the WLAN is on or off.
5.Secure Digital (SD) Slot	The secure digital card slot accepts a secure digital storage card. Refer to the <i>IPC320 Product Reference Guide</i> for installation instructions.
6.Power LED / Alarm Indicator	When the battery pack is installed in the PDA and charging in the Dock, this LED is Red. When the battery is completely charged, the LED changes to Green. When the LED flashes blue, it indicates a low battery. Some applications use a blue LED to indicate an Alarm or Error.
7.DC Power Adaptor Port	Connect the external power adaptor to this port to charge the battery. You must charge the batteries for thirteen (13) hours prior to first use. Charge the battery completely. Subsequent charge cycles require four (4) hours.
8.USB/Serial Synchronization Port	To synchronize data between a PC and the PDA, connect the USB or Serial cable with Desktop and the PDA. You must download and install Microsoft ActiveSync 3.7 or higher in the PC. Download ActiveSync from the Microsoft Web site at <a href="http://www.microsoft.com">www.microsoft.com</a> .
9.USB Host Port	The USB Host port can be used with a USB keyboard, mouse, compact flash card, and/or Ethernet connection. When using the dock, you can use standard a USB host port to connect USB peripherals. The USB Host Port supports only peripherals with low power consumption.
11.Speaker	The speaker emits the sounds from *.WAV and other media files. It can also be set to emit beeps or tones to indicate errors or good reads when bar code scanning and inputting data using the keypad or stylus.
12.Power/ Key	Press the <b>Power/Backlight</b> key briefly to turn the unit on. The <b>Backlight</b> comes on automatically. Press this key again briefly to turn the unit off.
13.Navigation Key	Press the edge of the 4-way navigation rocker key to move the cursor or highlighted text entry during a menu/list selection. <ul style="list-style-type: none"> <li>• The &lt;Up&gt; arrow moves the cursor <b>up</b> one line.</li> <li>• The &lt;Right&gt; arrow moves the cursor to the <b>right</b> one character.</li> <li>• The &lt;Down&gt; arrow moves the cursor <b>down</b> one line.</li> <li>• The &lt;Left&gt; arrow moves the cursor to the <b>left</b> one character.</li> </ul>
For more information on each of these features, please contact Q&A of ATID Home ( <a href="http://www.ATID1.com">www.ATID1.com</a> ).	

Features	Function/Description
14.KBD key	KBD key executes input panel (SIP) Press again, input panel (SIP) disappears
15.Reset Key	Use (R/S) button located on the Keypad of PDA to perform a soft and hard reset. Please refer to the section 4 – Resetting the PDA.
16.Keypad	Use the alpha-numeric, function, and navigation keys on the keypad to enter numbers, letters, symbols and navigate. For details on each key in the keypad, please refer to the section 7 – Using the Keypad.
17.Ear Port	
18.Battery Compartment.	Insert battery charged fully in this compartment.
19.Handstrap	The PDA comes with the hand strap, which is easily removable to access features and can be replaced by an ergonomically designed handle.
20.Stylus	Use the stylus for navigation, on the soft input panel (SIP), and to select items on the touch screen. It is a good idea to replace the stylus in the holder after each use so you don't lose or misplace it.
21.MIC	
22. Low Battery LED	The battery becomes red and blinks automatically, when it is in the “ low Battery Status”
For more information on each of these features, please contact Q&A of ATID Home ( <a href="http://www.ATID1.com">www.ATID1.com</a> ).	

## 2. Power

This section introduces the power system of AT570 such as power switch and battery.

### 2.1 Power ON/OFF

#### 2.1.1 Power ON

1. Press power key, the AT570 and the backlight will be on.
2. To save power and prolong the battery, the screen gets to be off, when the AT570 goes into idle mode. And it is easy to resume activity. Just tap the screen or press any key on the keypad.

#### 2.1.2 Power OFF

1. Press power key, you actually suspend the AT570 and turn off the display and backlight.
2. The other method: **Tap start > Suspend**

#### 2.1.3 What is idle mode?

It is the period that computer goes on without any activity for a long time, but it doesn't have influence on data

You can set up the time into idle mode and the PDA will enter the idle mode automatically after the interval time you set goes to the end. It helps you prolong your battery life. If you want to restart your AT-570 while the PDA goes in the idle time, tap anywhere on the screen.

To change the time into idle mode

**Tap Start > Setting > Control Panel > Power**

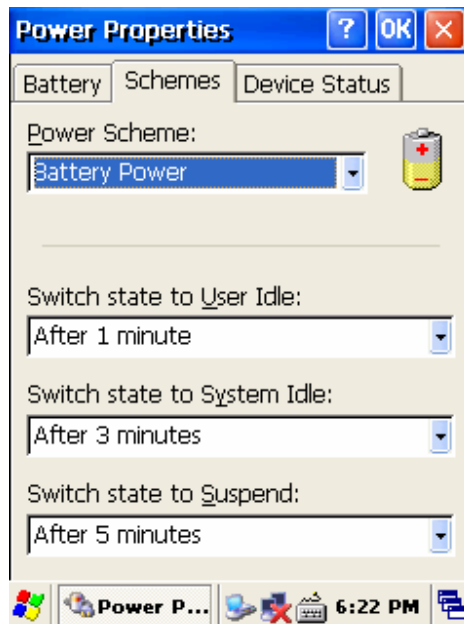


Figure 1. Setting Idle time

#### 2.1.4 Suspend mode

1. When you do not use AT-570W for a long time, make your AT-570W go into the suspend mode for saving power.
2. If you want to restart your AT-570W, press the power key.

## 2.2 Battery

The AT570 uses replaceable 4400 mAh, Li-ion batteries.

If the battery continues to drop to the “ Low Battery Status, the battery status LED becomes red and blinks, and then AT570W will be suspended. You need to recharge the battery.

#### 2.2.1 Checking Battery Power

You can check the battery status by using the power applet.

**Tap Start > Settings] > Control panel > Power**

The power control panel applet displays a battery power gauge.

#### 2.2.2 Very Low Battery Status

To prevent the AT570W from being discharged completely, your AT-570W will be suspended, when the battery continues to get low. You need to recharge your battery before the battery continues to drop.

## 2.3 Removing and installing the battery

#### 2.3.1 Removing the battery

At first, pull out the hand scrap and then press the battery latch to the above until the battery is released from the AT570W, then lift it out.

#### 2.3.2 Installing the battery

Insert the bottom of battery into the sunken place located in battery compartment, and press the battery latch to the above until the battery is installed completely.

## 2.4 Battery discharging

Several factors determine the life of your battery such as extreme temperatures, input devices, and your usage, but generally you can use AT-570W for 6~12hours.

If the AT-570W is not on external power and battery pack is removed, it will enter suspend mode.

## 2.5 Recharging the battery

Use the adapter provided from ATID to recharge your battery.

### Caution

**Your AT-570W can be damaged, in case of using the adapter that is not provided from ATID.**

#### 2.5.1 Using the adapter

The charge/operating power can be applied to AT-570W by using DC adapter.

1. Connect the adapter to the power cord.
2. Connect the DC power jack to the AT-570W.
3. When the battery is charging, the LED becomes red.



**Figure 2. Using the adapter to recharge**

#### 2.5.2 Using the Dock

The Dock is for charging AT570W, and the dock is one of which also can act as a communication port.



**Figure 3. Using the Dock to recharge**

#### CAUTION

Make sure the AT570W is firmly seated in the dock, charger, or power adaptor. If it is not firmly seated, battery charging and communication with the Host PC will NOT be initiated.

There are four methods for charging a main battery. Refer to Table 3 for a complete listing of methods, Durations, and LED indicators.

## **2.6 Backup Battery**

The backup battery in the PDA is a 200mAh rechargeable battery that holds system data at least 2 hours without main battery.

### **CAUTION**

If you remove the battery or the battery completely discharges, there is a two(2)hour window in which to insert a charged battery before the backup battery completely discharges and the contents of the RAM memory are lost. It is a good idea to keep your data and applications in Flash Disk for that reason. Refer to “ Flash Disk” for more information.

If both the battery pack and the backup battery are allowed to discharge completely, you must recharge both batteries for thirteen (13) hours.

The backup battery is charged off the battery pack, so it is important to keep the battery pack with at least a minimal charge so the unit can maintain date, time, data, and other settings.

## **2.7 Disposal of spent battery**

When the battery reaches the end of its useful life, the spent battery should be disposed by a qualified recycler or material handler

### **Warning**

**Do not mix the spent battery with the solid waste stream and keep away from children.**

### 3. Setting up the AT-570W

This section describes the basic information for setting your AT-570W.

#### 3.1 Power

Press the **Power** key briefly to turn on the PDA. The **Backlight** comes on automatically. Press this key again briefly to turn off the PDA. To turn off the **Backlight** while the PDA goes on, press and hold the key for at least a second. This key acts to toggle the **Backlight** function off and on.

**Desktop:** The figure to the right shows the desktop display, or main screen.

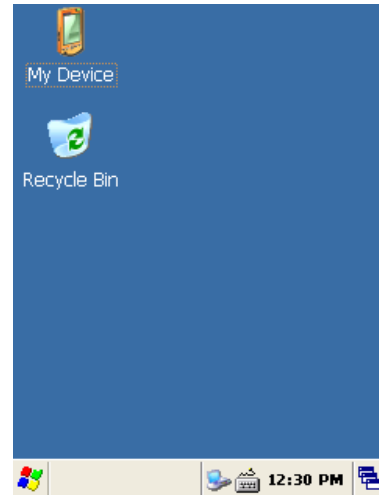


Figure 1. Background Screen

#### 3.3 Adjusting Brightness

The AT-570W manufactured at the factory keeps 80% brightness, but because of several reasons such as dark environment or user's condition of eyesight, and above all, the illumination consumes much power, so that the users want to adjust the backlight.

To adjust backlight:

**Tap Start > Settings > control panel > backlight**

**Level:** you can adjust the brightness

**Backlight:** you can adjust the entry time into idle mode when use AT-570W with battery power or external power.

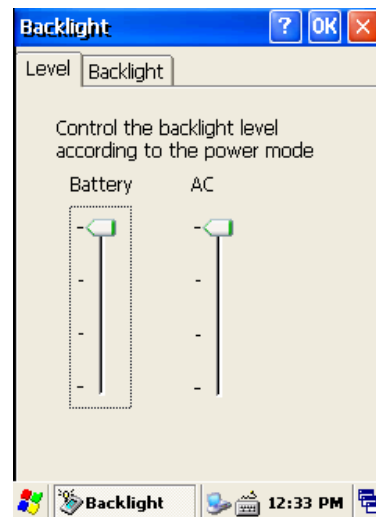


Figure 2. Adjusting Brightness



### 3.4 Calibrating up the screen

According to user's personal treatment, and activity, applications installed in the AT-570W need to be set up after purchasing it.

#### Calibrating the Touch Screen

Thought the screen is already calibrated, but if you have feeling that your screen isn't responding properly to your tap, you can recalibrate it again.

To recalibrate the screen

**Tap start > Settings > Control panel > Stylus > Calibration > Recalibration**

Press and briefly hold stylus on the center of target, and repeat 5 times as the target moves around the screen. The screen counts 30 seconds after calibrating, and you can finish the recalibration to touch screen wherever you want. If you did not have any action, the screen will automatically finish the recalibration of itself.

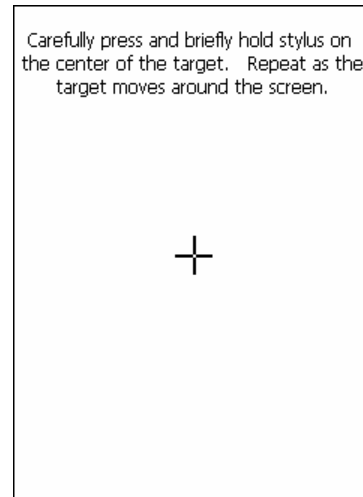


Figure 3. Recalibrating

### 3.5 Adjusting Volume

#### Volume & Sounds

Your AT-570W manufactured at factory is set at the maximum volume, so you can adjust the volume if you need suitable sound.

To adjust Volume & Sounds

**Tap Start > Settings > Volume & Sounds**

**Volume tap:** tap to adjust Volume

**Sounds tab:** tap to set the imitated sounds

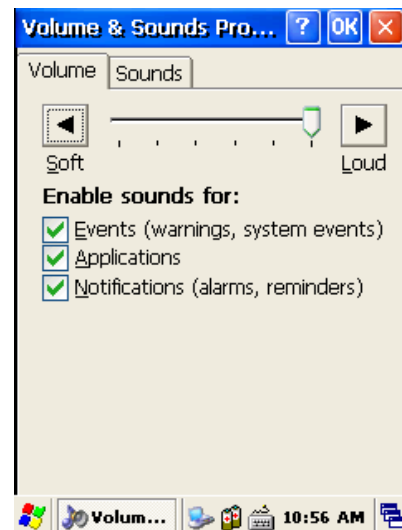


Figure 4. Adjusting volume

### 3.6 Setting Date and Time

#### Date & time

You can set the current time located at the bottom of screen.

Tap **Start > Settings > Control Panel > Date & Time**

**Year:** Select the year, then the spin control appears. Try to set the year though the navigation key or up/down button.

**Month:** Select the month directly, then the full months of one year appear. Try to select the correct month. You can also select the month though the left/right key.

**Day:** Just tap a day in the calendar.

**Time:** you can set the time though the up/down button.

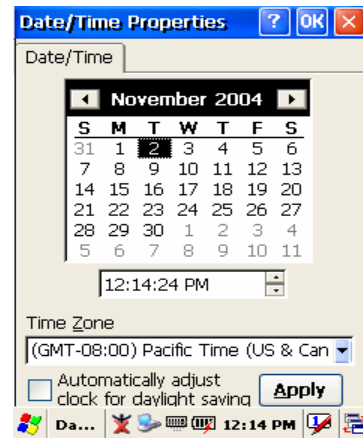


Figure 5. Date/Time

If you set the time zone one time, you can set the correct local time easily by changing the location into where you are.

### 3.7 Power Configuration

To adjust power management settings,

Tap **Start > Settings > Control Panel > Power**

Use this control panel to check the charge on the battery or to change the Power settings.

#### Battery Tab

Battery tap: It shows the power remained in the main battery and the backup battery.

To exit, press OK from the command bar, or press the **<Enter>** key on the keypad.

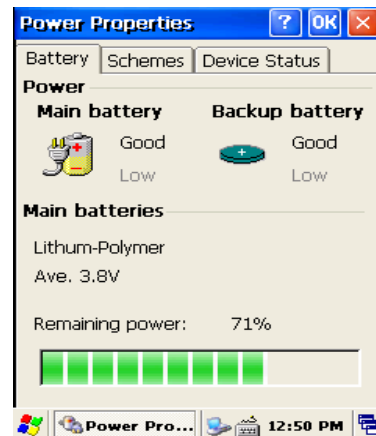


Figure 6. Battery status

### 3.8 Schemes Tab

It allows you to determine the entry time of user's idle mode, system idle mode, and suspend mode while you use either main battery or AC power. This will help you to save more power, if you have to move repeatedly on your work.

To exit, press OK from the command bar, or press the **<Enter>** key on the keypad.

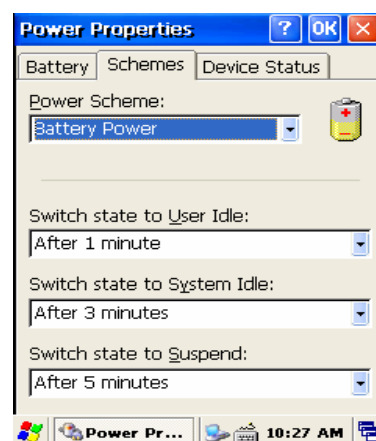


Figure 7 . Schemes Tap

### 3.9 Memory Allocation

Adjust the Memory Allocation with the following steps:

1. **Tab Start > Settings > Control Panel > System Properties**
2. Select the Memory tab.
3. Move the slider to adjust memory allocation. Default storage Memory is normally set to about 8 MB with the remainder.
4. Press the OK button, or the **<Enter>** key on the keypad.

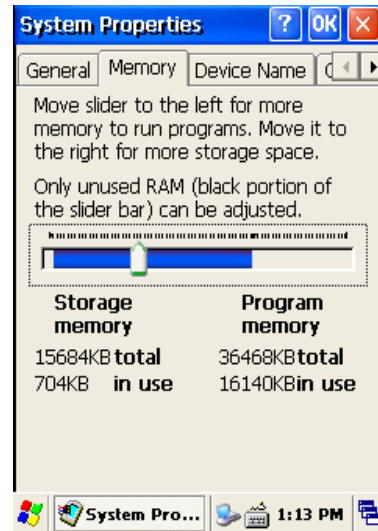


Figure8. Memory Allocation

## 4. Resetting the PDA

When the AT-570W completely stops responding for your command, or an application is locked up and does not respond, and when you want to upgrade the firmware, it may be necessary to perform a reset.

### Caution

Always attempt a Warm reset before initiating a Cold reset. Once you initiate a cold reset, all applications are forcibly closed and working RAM and files are cleared.

It is a good idea to store important data in the resident (Flash Disk) for this reason.

### Warning

Do not use force or a sharp object like paper clip to press the reset button. Use the stylus for that purpose. Sharp object like paper clip could puncture the seal of the reset key.

### 4.1 Warm Reset

#### When you should perform the warm reset?

When you cannot turn on or off a program, or execute other programs because of “hang” –the system error that stops responding. The “warm reset” for recovering the AT-570W is to press R/S button on the front of AT-570W. This method not guarantee that cashed disk data will be saved, so transactional data maybe lost during the reset.

**Procedure to Warm Reset.** To initialize warm reset, press and hold the <Reset> key.

#### After Warm Reset

- The splash screen will appear shortly.
- The desktop appears with the application shortcuts on the screen.
- The custom settings in the registry are persistent.
- The RF Network PC Card if present, connects to the network system.

### 4.2 Hard Reset (cold reset)

#### When you should perform the cold reset?

If the performed reset method fails to restore system operation, it may be necessary to perform a hard reset. This is a boot method that formats the object store to clean data and registry information from the AT-570W system and restores them to their factory-default state.

This will erase the memory in the AT-570W, including all applications and data files found in the object store (user store).

A Hard reset is a complete reset of the PDA in which all applications are forcibly closed and working RAM and files are cleared.

**Hard Reset Procedure.** To perform a Hard reset, simultaneously press the <Reset> key with the stylus while pressing the <power> key.

#### After Hard Reset.

When a PDA goes through the Hard reset sequence, it clears the working RAM and initializes the file system.

- The splash screen will appear shortly.
- You will be asked to recalibrate the touch screen. Press the <ESC> key to circumvent

recalibration.

- The desktop appears with the application shortcuts on the screen.
- The custom settings in the registry are persistent.
- The RF Network PC Card if present, connects to the network system.
- The application saved in Flash Disk will not be deleted after cold reset (refer to section 5 Flash Disk)

## 5. Flash Disk

In addition to the RAM-based storage standard on Windows CE .NET terminals, the AT-570 is also equipped with a **Flash Disk**, and all the application and data in the Flash Disk can be persisted in its own condition after the hard reset. From this point of view, it is a kind of very useful method to keep important application and execute user's own application automatically after the hard reset.

To save your application program, please keep these following steps in your mind.

### 5.1 Hard reset

1. At first copy an execute file you want to re-execute.
2. **Double-tap My Device > Flash Disk > Open Start folder > Open Hard Reset folder**
3. Paste the copied file in the **Hard Reset Folder**.

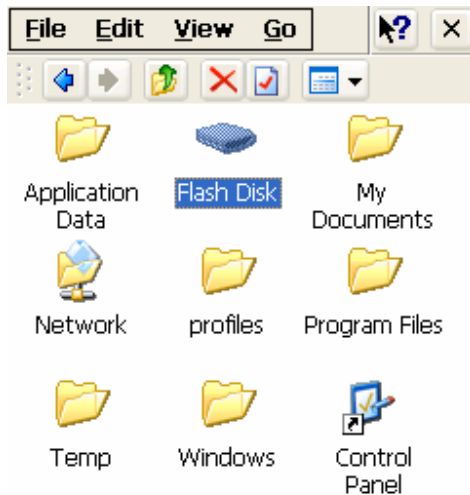


Figure1. Click Flash Disk

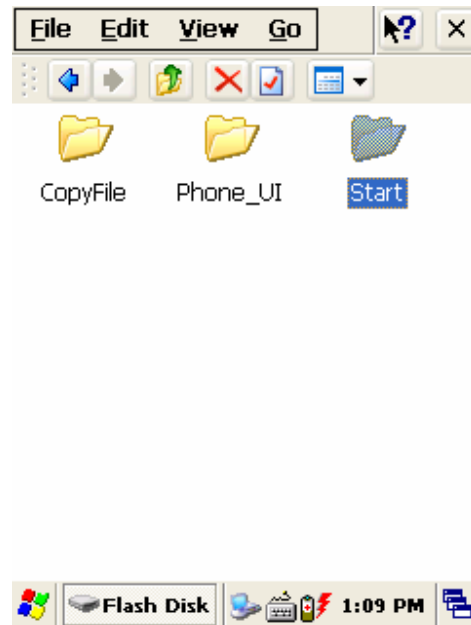


Figure2. Click Start folder

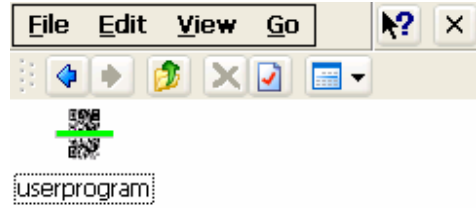
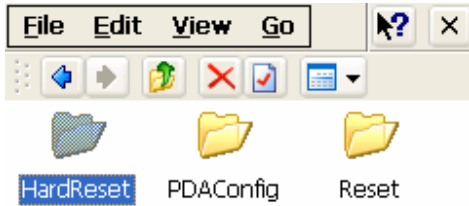


Figure 3. Open the HardReset folder

Figure4. An application in the HardReset folder

If you don't want to execute the application copied in the Flash Disk, after the hard reset is performed, press the "Fn" key during the hard reset.

### 5.2 Warm reset

1. At first copy an execute file you want to execute after warm reset.
2. Double-tap My Device > Flash Disk > Open Start folder > Open Reset folder
3. Paste the copied file in the Reset folder.

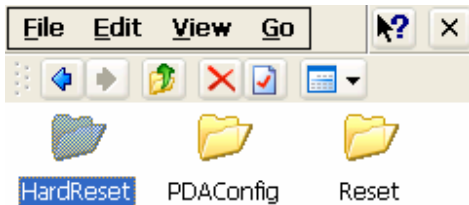


Figure 5. Open Reset Folder

If you don't want to execute the application copied in the Flash Disk, after the Warm reset is performed, press the "Fn" key during the Warm reset.

### 5.3 Restoring files to the existed place

When a PDA goes through the hard Reset sequence, it clears the working RAM and initializes the file system, but because of Flash Disk you can make your files return back to their existed place after the Hard Reset get performed. This method is also very useful to configure your system without any action after the hard Reset.

To make files get replaced:

Copy files you want to replace after the hard reset.

Double-tap My Device > Flash Disk > Open CopyFile



Figure 7. Click CopyFile

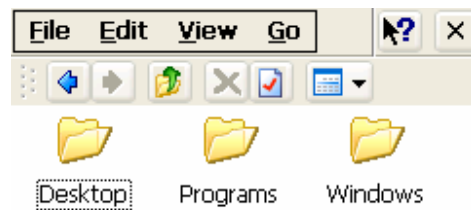


Figure 8. Copy files you want to replace



To make your files replaced back to the background screen (WWindowsWBackground) after the Hard Reset, copy your Files into the Desktop folder.

To make your files replaced back to programs (WWindowsWPrograms) folder after the Hard Reset, copy your Files into the Programs folder.

To make your files replaced back to Windows (WWindows) after the Hard Reset, copy your Files into the Windows folder.

## 6. Registry Backup

Your AT-570 is preparing the Registry Backup program for solution to save the user's registry. This is a very useful method to restore your AT-570, when you perform the hard reset, and even if it is discharged completely.

The main function of registry:

1. Makes connection between WLAN and AP.
2. Execute Registry BackUp program and save registry.
3. Restores the connection between WLAN and AP after hard or soft reset.

To save registry:

Tap My device > Windows > Double-tap Registry Backup

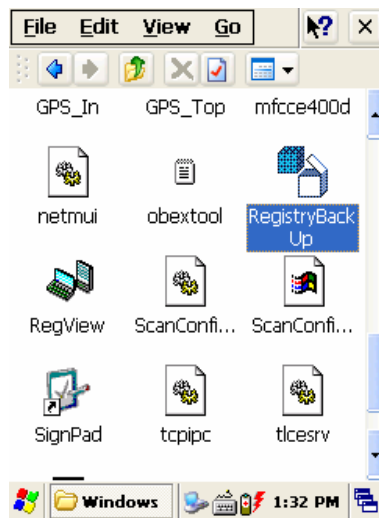


Figure 1. Registry BackUp

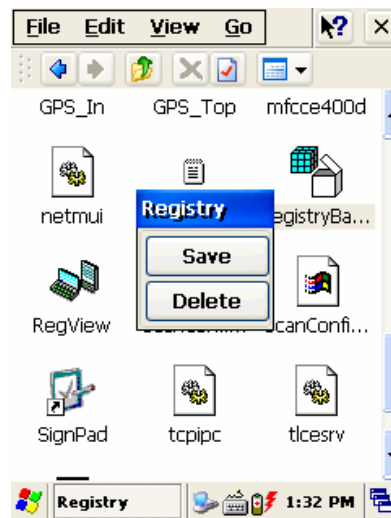


Figure 2. Save or delete registry

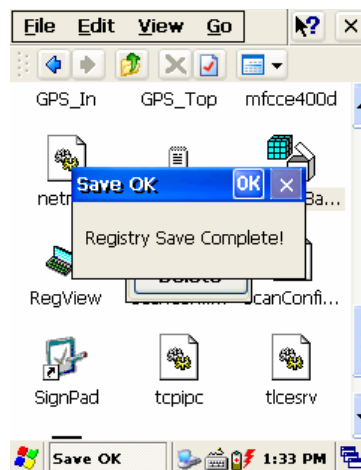


Figure 3. Registry Save



## 7. Using the keypad

The keypad is useful to input data and most of the keys on the keypad have more than one function. Try to input data with the keypad after know how to use it and keep the intimate knowledge like following tips in your mind.

### 7.1 Change current character

To change the current input character type, press the <key> key, than you can see the changed current key type like following steps:

**Numeric > Lowercase > Uppercase > Special**

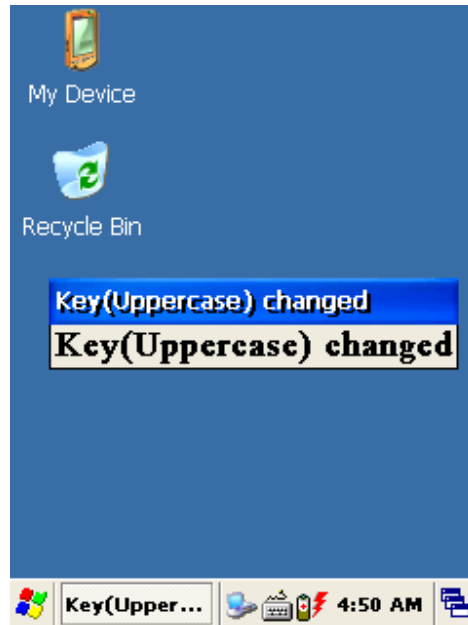


Figure4. Changing Current Character

### 7.2 Inputting data

**Numeric Mode:** After making your choice to the Numeric Mode through the <key> key, and just press from 1 to 10 numeric keys.

**Alpha Mode:** In alphabetical order, there are 2~3 letters per key.

To input the first letter, press the key you want input one time, and to input the second and third letter, press the key how many times as the letter is ordered on the key continuously.

**Special character:** After making your choice to the **Special** Mode through the <key> key, press the key that has special character you want to input.

### 7.3 Setting device through the <Fn> key

Press <Fn> + other keys simultaneously to activate follows.

Table3.key describe

Fn +	Function
Navigation <Up>	Increase sound.
Navigation <Down>	Decrease sound.
<Esc> Key	WLAN ON / OFF
2	Execute App1 program.
3	Execute App3 program.
4	Copy clip board.
5	Add to clip board.

#### Setting App

To execute the program designated by user directly:

Tap Start > Control panel > Application Buttons and designate App1, App2 as you want to execute anytime.



KBD button: you can make the touch screen display the input panel program directly to press the KBD button on the front of the AT-570W.

## 8. Using the stylus

The stylus is located next to the Battery pack on the right rear of the PDA. The stylus on the PDA is the equivalent of the mouse on a PC.

**Warning:** Never use a pen, pencil, or other sharp object on the AT570W's touch screen display. Use only the supplied stylus or plastic-tipped pens intended for use with a touch screen-sensitive display.

Use the stylus to:

- \*Navigate the touch screen display.
- \*Select characters in the soft input panel (SIP).
- \*Select applications from the desktop or system tray.
- \*Select buttons, tabs, fields and text within applications and dialog boxes.

## 9. Using the Hand-strap and Gun hand-held

To use the PDA for extended periods of time, install the hand-strap for increased comfort and usability.

1. Turn the PDA face down and ensure the power is off.
2. Insert strap into strap holder and pull down for fixing.
3. Pull plastic tab up to insert the strap recess at the top of the unit.



Figure 1. Using the hand-strap



Figure 2. the Gun-typed hand-held

# Chap 2. Windows Program

This chapter introduces Microsoft Windows Mobile 5.0 for Pocket PC. While using the ATID Mobile Computer, keep these key points in mind:

- 1) **Tap Start** on the **navigation bar**, located at the bottom of the screen, to quickly move to programs, files, and settings.
- 2) **Tap and hold** an item to see a **pop-up menu** containing a list of actions you can perform.

## 1. Basic Information

### 1.1 Task Bar and Command Bar

The task bar is located at the bottom of the screen. It displays the active program and current time, switch to programs, input panel, and battery status.

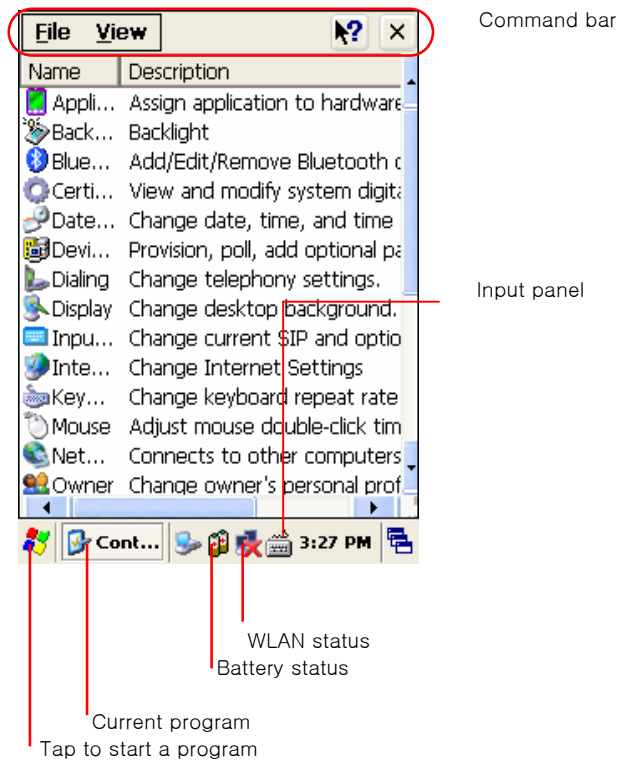


Figure 1. Task Bar and Command Bar

Use the command bar to perform tasks in programs. The command bar includes menu names, functions.

## 1.2 Pop-up Menus

Use pop-up menus to quickly perform an action on an item. For example, you can use a pop-up menu to delete or copy of an item. To access a pop-up menu, tap and hold the item on which you want to perform the action. When the menu appears, tap the action you want to perform, or tap anywhere outside the menu to close the menu without doing the action.

## 2. Executing a Program

When you turn on the AT-570 for the first time, you can see the following start screen. Try to double-tap “ My device” Icon > windows > Program > tap an icon you want to execute.

You can also display it by tapping the Start flag at the bottom left of your display.

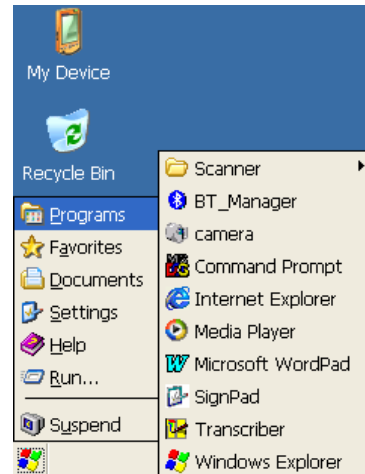


Figure 2. Executing a Program to use Start Flag

## 3. Entering information

You can enter information on your AT-570 in several ways, depending on the type you have and the program you are using.

### 3.1 Using the Onscreen keypad

Use the input panel to enter information in any program on your AT-570.

You can both type using onscreen keyboard or write using transcriber.

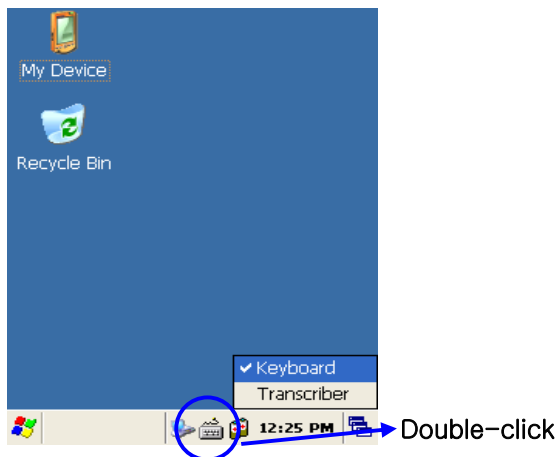


Figure 3-1. Selecting SIP menu

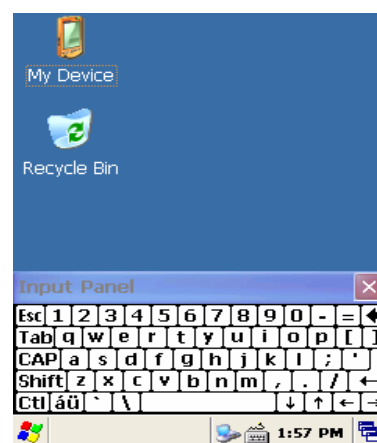


Figure 3-2 Popping-up SIP

To make pop-up menu appears, double-tap the keypad icon on the taskbar.

To make soft input panel (SIP) popped up, tap the keypad icon on the taskbar, or press “ KBD/)) “ key on the keypad.

To see Soft Keyboard Option:

**Tap Start > Settings > Control Panel > Input panel**, select “ keyboard” from the current Input method drop-down list, tap “ option” , then adjust Options as you want to use.

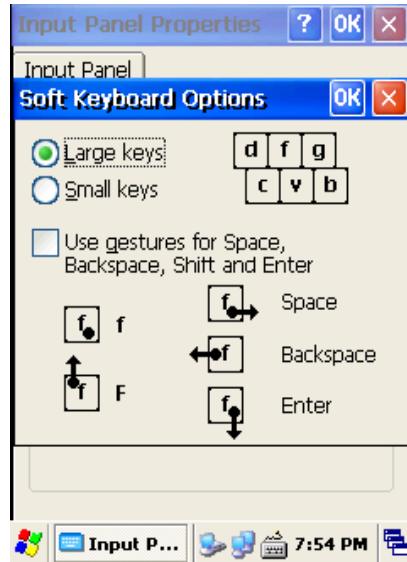


Figure 4. Keypad Option

### 3.2 Using Transcriber

With Transcriber, you can write anywhere on the screen using the stylus just as you would on paper. Double-tap input panel icon, than tap Transcriber. After selecting, than write anywhere on the screen.

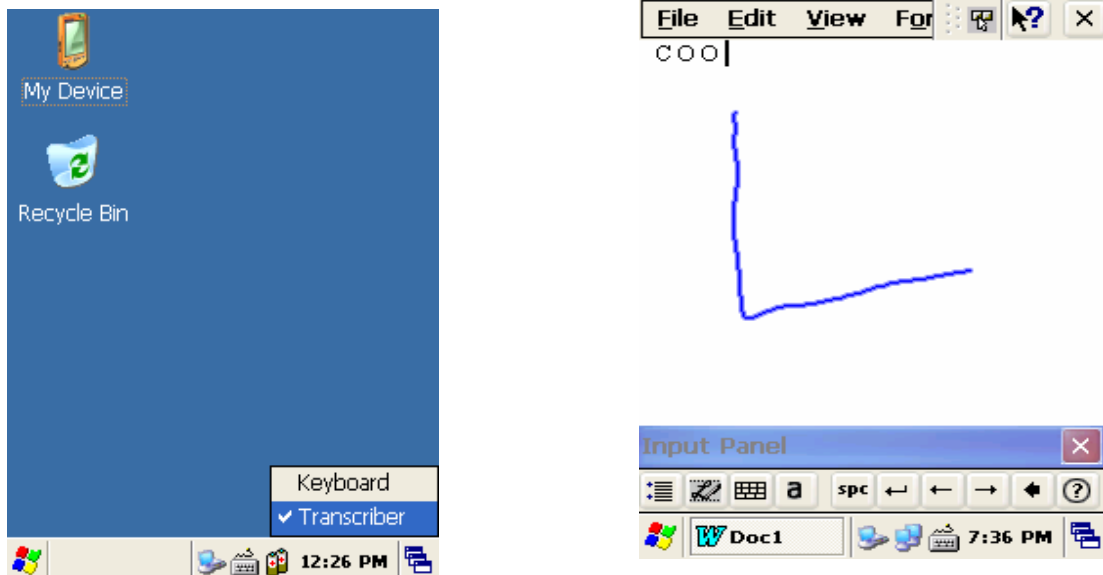


Figure 5. Using Transcriber in an application program

## 4. Customizing Your AT-570W

You can customize your mobile by adjusting setting and installing additional software.

### 4.1 Adjusting settings

To adjust settings to fit the way you work:

Tap [Start] > [Settings] > [Control Panel]

To open a program, you can use the “ File” pop-up menu, or double-tap an icon you want execute in the Control Panel.

To arrange programs with detail, tap the “ View” and select “ Detail” , and than tap “ Arrange Icons” . If you want to arrange all the icons by description, tap “ By Description” , and if you want to arrange all icons by alphabetic order, tap “ By Name” .

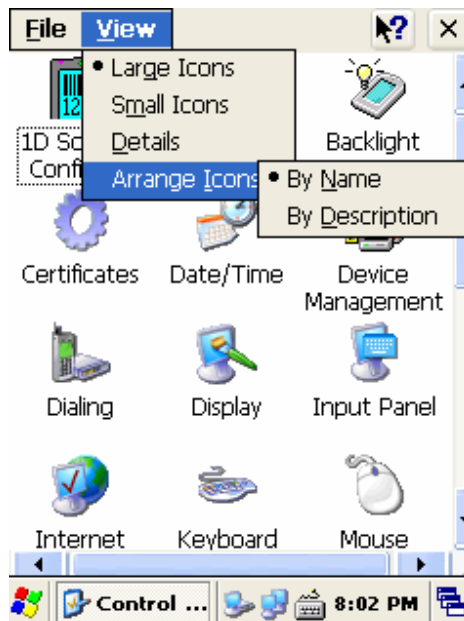


Figure 1. Setting Icons

### 4.2 Adding or Removing Programs

Programs added to your AT-570 Mobile computer at the factory are stored in ROM (Read Only Memory). You cannot remove this software, and you cannot accidentally lose ROM contents. Applications added to your AT-570 Mobile computer go into the Object Store, Which is located in Flash ROM. You can install any program created for AT-570, as long as there is enough memory.

### 4.3 Adding Programs Using ActiveSync

1. Use the Explore in ActiveSync on your desktop computer to explore the files on your PDA, and locate the program.
2. Right-click on the program, then select **Create Shortcut**.
3. Move the shortcut to the Programs folder in the Windows folder.

The shortcut appears on the menu.

## 4.5 Removing Programs

To remove a program, tap **Start > Settings > Control Panel > tap Remove Programs Icon**, then select the program you want to remove. Press the “ Remove ” tap.

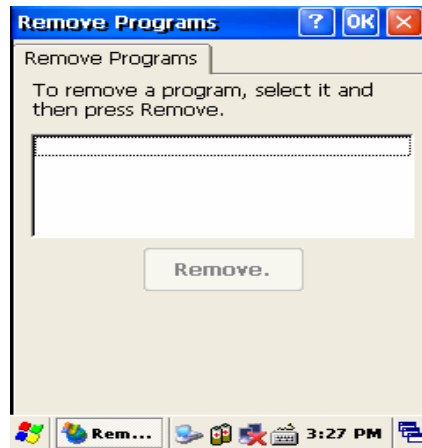


Figure 2. Input a program to remove

## 5. Microsoft ActiveSync

This section provides instructions on setting up the Host PC so that the PC can communicate with the PDA and the dock.

### 5.1 Using Microsoft ActiveSync

You can synchronize the information on your desktop with the information on your AT-570. Synchronization compares the data on your AT-570 with your desktop and updates both computers with the most recent information

**NOTICE:** You must have Microsoft ActiveSync 4.2 or greater on your desktop before you can synchronize information with your AT-570.

With ActiveSync

You can also do:

1. Back up and restore your AT-570 data
2. Copy (rather than synchronize) files between your AT-570 and desktop.
3. Control when synchronization occurs by selecting a synchronization mode. For example, you can synchronize continually while connected to your desktop or only when you choose the synchronize command.
4. Select which information types are synchronized and control how much data is synchronized.

For more information, please refer to the instruction of Microsoft ActiveSync.

### 5.2 Installing Microsoft ActiveSync on your desktop

Microsoft ActiveSync is a file transfer tool to synchronize the files on a desktop with the files on your PDA. The AT570 comes from the factory with ActiveSync loaded. If you have ActiveSync already installed on your PC, make sure that you have v4.2 or higher.

To install Microsoft ActiveSync, complete the following steps on the PC:



1. Go to the Microsoft Windows CE .NET website and download the most current version of ActiveSync <http://www.microsoft.com/mobile/pocketpc/downloads/>. Install the most current version of Microsoft ActiveSync (v4.2 or greater) on the host PC.
2. Once ActiveSync is installed, it will attempt to connect to the AT570; allow it to fail on the first attempt.

### 5.3 Setting up a Partnership

ActiveSync file synchronization requires an ActiveSync partnership between the AT570 and the Host PC.

#### Setting up a Partnership.

1. Select the files in the synchronization configuration for the AT570.
2. Select Tools > Options from the ActiveSync command bar to configure the synchronization options.

Place the file to be synchronized in the Synchronization folder created in your My Documents directory. During the ActiveSync connection, all files in the Synchronization folder will be synchronized to the My Documents directory on the AT570.

### 5.4 Transferring Files

To transfer files, complete the following steps on the host PC:

1. Select **Start > Programs > Microsoft ActiveSync**
2. Double-click on the ActiveSync icon in the System Tool Tray.
3. After you have established a connection with your PDA, tap the Explore button at the top of the ActiveSync window (or select Explore from the File menu). Navigate to the target directory on your portable and copy the desired file by using the Copy/Paste method or dragging and dropping the desired file(s) into the folder.

## 6. Microsoft WordPad

Use Microsoft WordPad to create documents, such as letters or meeting minutes.

Select **Start > Programs > Microsoft WordPad**

The PDA comes with WordPad for Windows CE .NET installed from the factory. The following text and document file types are compatible with WordPad:

Text (\*.txt), Word Document (\*.doc), Rich Text File (\*.rtf), WordPad (\*.pwd)

When you transfer file types other than \*.pwd to the Windows CE .NET device, it translates the files into a compressed Windows CE .NET file type.

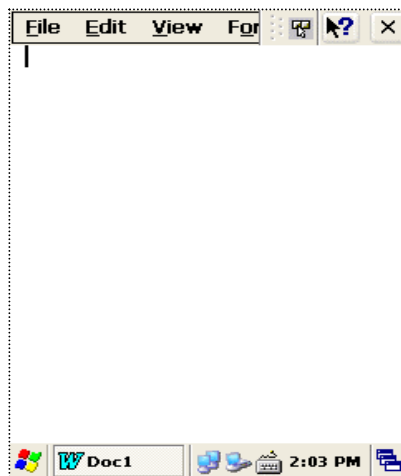


Figure 1. WordPad.

## 7. Window Media Player

Use Media Player on your desktop to copy digital audio and video files to your AT-570. You can play Window media and MP3 files on your AT-570.

To display Media Player:

Tap Star > Programs > Media Player



Figure 1. Media Player

## 8. Internet Explorer

The PDA comes with Internet Explorer for Windows CE.Net installed

1. Open Internet Explorer by selecting Start > Programs > Internet Explorer.
2. To set a default home page, navigate to the desired default web page.
3. Select View > Internet Options from the command bar.
4. Enter the desired URL in the **Start Page** field.
5. Press the OK button.



Figure 1. Internet Explorer

## 9. Context Sensitive Help

Microsoft Windows CE context sensitive help is available where ever a “ ?” button appears in the upper right hand corner of the window. To open context sensitive Help, select/tap the “ ?” in the upper right corner of most screens. Select/tap the desired item from the list of hot links.

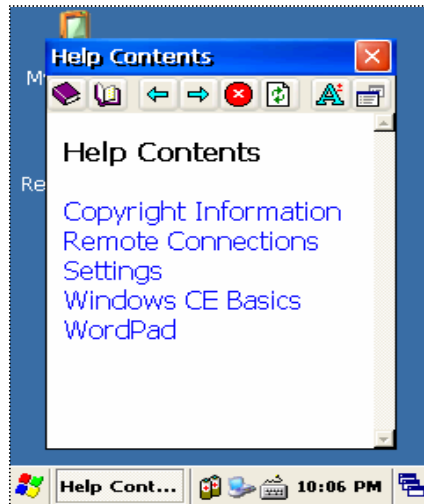


Figure 1. Sensitive Help

## Chap 3. Optional Module (Version 1.1)

The automatic identification and wireless network technology has helped users to keep their information, and makes IT engineers try various methods to develop modules used within mobile computer. The AT-570 can also be supported with the optional modules for the needs of users. This section provides you with the information of the Optional Modules, and sources for additional product information. You need to confirm the follow information before you get the device that you want to use.

The Optional modules supported from ATID

**Note:** According to Upgrading for device, the additional information can be changed.

- 1) Barcode Reader
  - . 1D Scanner Barcode Reader
  
- 2) Barcode Reader
  - . 2D Scanner Barcode Reader
  
- 3) Wireless Lan – 801.11 b.g
  
- 4) Camera

# 1. 1D barcode Scanner

This chapter introduces the AT570 built in with the 1D, 2D barcode Scanner program to assist you in making the most out of your AT570

## 1.1 AT1DTScanner(Demo program)

You can execute **AT1DTScanner** coded from ATID to make sure that your AT570 scans barcodes exactly.



Figure 1. Scan Window for 1D image



Figure 2. Scan Window for 2D image

### 1) To execute Scanner Diagnostics

Tap [start] -> [program] -> [Scanner] -> [AT1DTScanner]

Note: If you don't have AT1Dscanner.exe(Ver 1.2) File, please look for our staff or visit ATID web site at [www.atid1.com](http://www.atid1.com) to download.

### [Program Release Note]

1. Ver 1.2 : can only read barcode
2. Ver 1.0 : can read barcode and set up symbology

### 2) Reading barcodes

1. Press the L/R scanning button or Fn4, KBD key to scan barcode. You can also tap the " Start" on the screen to scan a barcode when the larger beam is aimed to a barcode.
2. Make sure that your AT570 scans barcode exactly on the demo program.

\* The scanned data will be displayed on the screen, if your AT-570 reads a tag exactly.

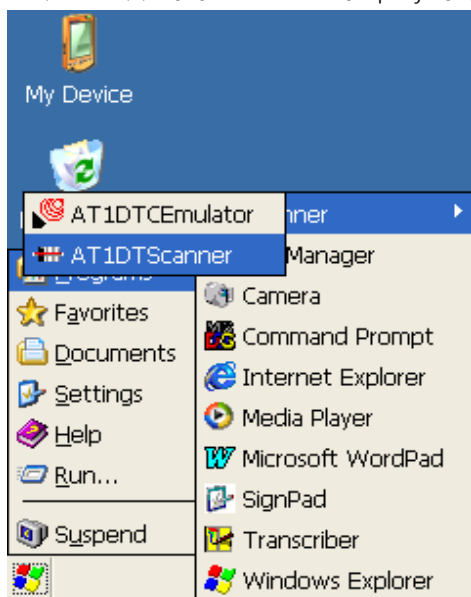


Figure 3. 1D Scanner Program(ver 1.2)

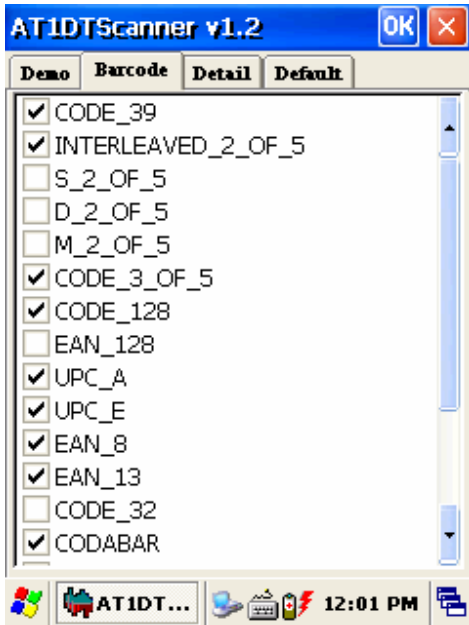


Figure 4. Select barcodes that you are

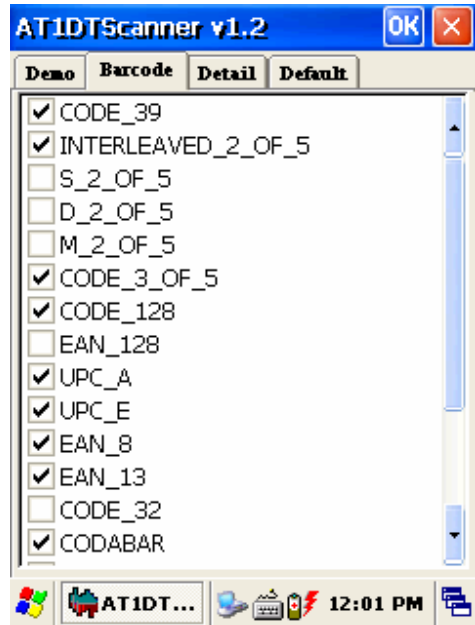


Figure 5. Detailed function

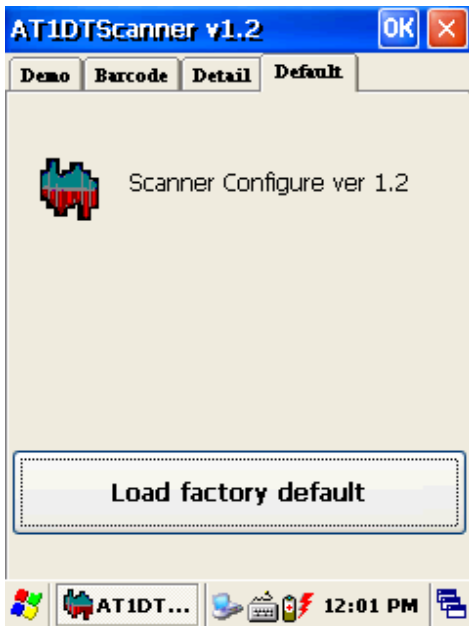


Figure 6. Load factory default

Optional Function:  
Format the result value to be added  
with its type or not.

### 3) Reading barcodes

1. Press the L/R scanning button or Fn4, KBD key to scan barcode. You can also tap the “ Start” on the screen to scan a barcode when the lager beam is aimed to a barcode.
  2. Make sure that your AT570 scans barcode exactly on the demo program.
- \* The scanned data will be displayed on the screen, if your AT-570 reads a tag exactly.

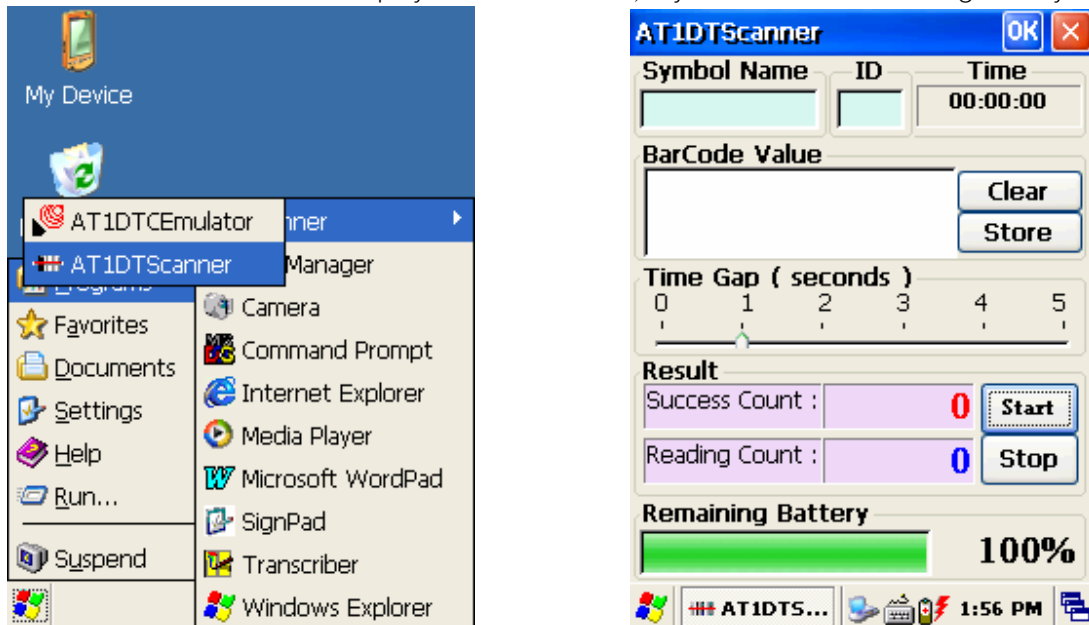


Figure 7. 1D Scanner Program

## 1.2 Setting up the AT1D Emulator

You can input the barcode value you scanned in any application program that has a cursor after setting the AT1Demulator. Like an input device, the AT1Demulator makes data displayed in an application program (see the following figure)



Figure8. Barcode value in the WordPad Program

### 1) Merit to use the AT1Demulator

Because the AT1Demulator can apply to all application programs that have a cursor such like Web program, Wordpad and others, you can input the scanned data directly without coding any application program.

### 2) To executing Emulator

Tap [Start] -> [Program] -> [Scanner] -> [AT1DTCEmulator]

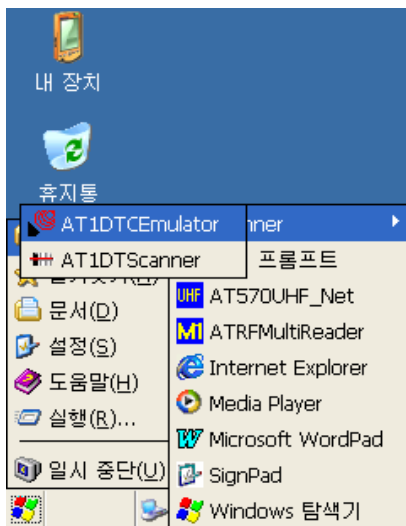


Figure 9. AT1DTCEmulator.exe

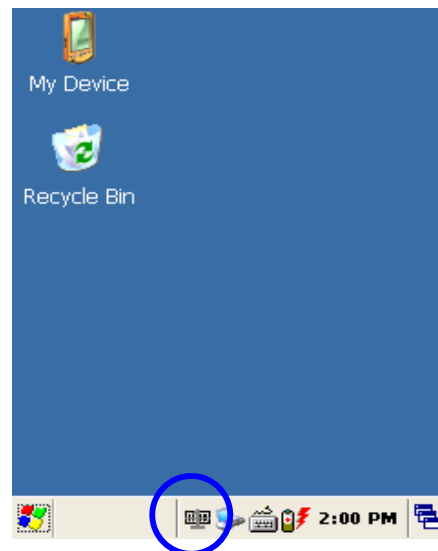


Figure 10. Tap this AT1DTCEmulator Icon



### 3) Setting the Emulator

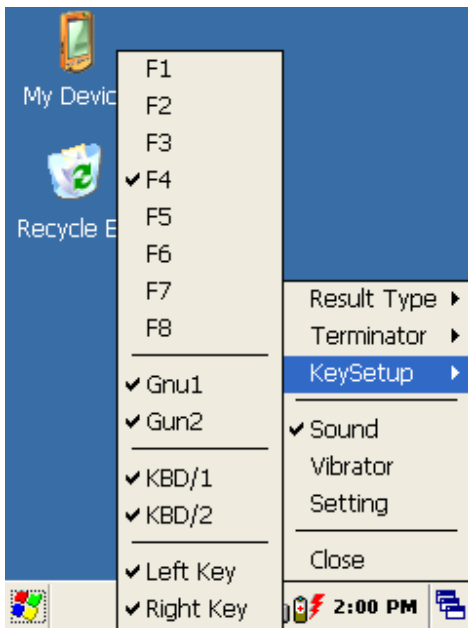


Figure 11. Setting Menu

#### 1. Result Type

There are 2 kinds of method to print the scanned barcode data where a cursor is pointing.

- A. Keyboard Event : Print the scanned barcode data like input Keyboard
- B. Copy & Paste : Print the scanned barcode data with Clipboard

#### 2. Terminator

You can set the termination code at the end of Barcode Value to tap “ Terminator” .

- A. None : No input the termination code.
- B. CRLF(Default Setting) : Carriage Return & Line Feed (Enter code)
- C. Space : Input Space code.
- D. Tab : Input Tab key code.

#### 3. KeySetup

You can make Hardware keys set to aim the lager beam.

- A. F1 ~ F8 Key : press those keys on the keypad to read barcode after setting.
- B. Gun1, Gun2 : Set for the gun-typed AT-570 .
- C. KBD/1, KBD/2 key : Same with the F1 ~ F8 Key
- D. Left Key, Right Key key : Same with the F1 ~ F8 Key

- 4. Sound : set the sound On/Off after Scanning Barcode
- 5. Vibrator : set the Vibrator On/Off after Scanning Barcode
- 6. Setting : NO use.
- 7. Close : Make Emulator Program closed

### 1.3 Setting up the 1D Barcode Symbology

When you are using barcodes that are encoded in a different symbology, you need to enable the symbology on your AT570. Please use ATID application to enable and disable symbologies.

This way will help you to improve the performance of your work, for example if you enable only the barcodes that you need to use every day, you don't need to perform any activity to use that barcodes.

You can set the details for all kinds of barcode, as you use **1D Scanner Configure** program.

[Setting details]

1. Settings for selecting barcodes that you want to enable
2. Settings for the detailed optional function to every barcode.
3. Changing the default of barcode scanner into the factory default.

The final state of the default that you set through the “ 1D Scanner Configure” cannot be initialized after you perform a hard-reset. So if you want to set up the default again, use Symbology Setting program to change the default.

#### 1) Executing Symbology Setting program

To execute Symbology Setting program:

**Start > setting > control panel > 1D Scanner Configure**

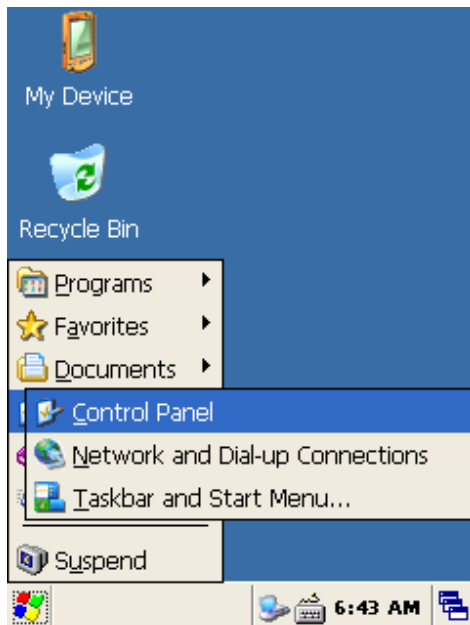


Figure 12. Tap Control Panel

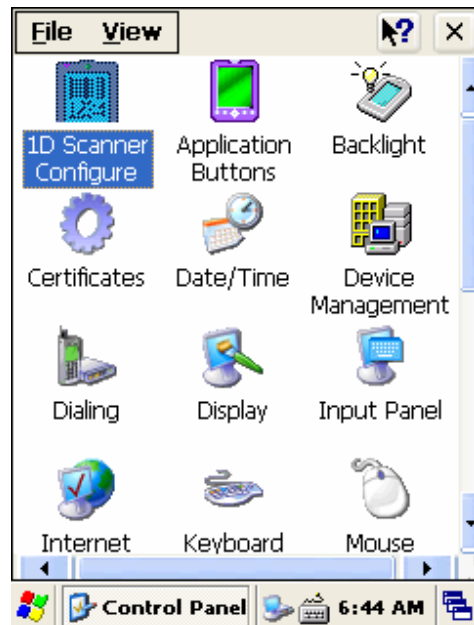


Figure 13. Execute 1D Scanner Configure

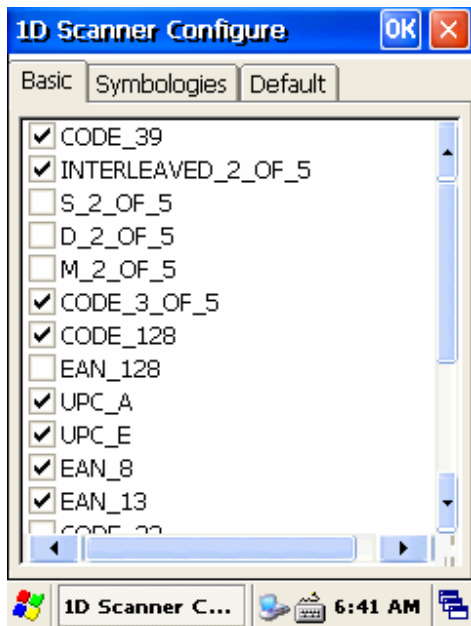


Figure 14. Select barcodes that you are using

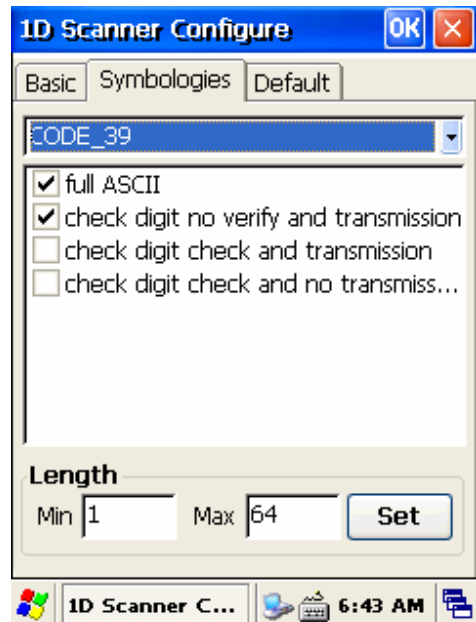


Figure 15. Detailed function

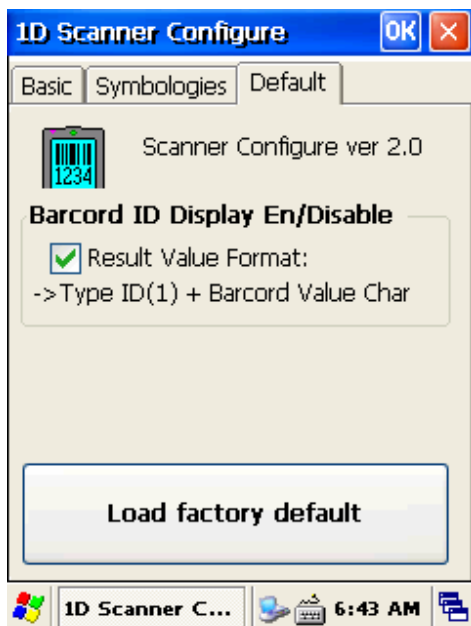


Figure 16. Load factory default

Optional Function:  
Format the result value to be added  
with its type or not.

## 2. 2D barcode Scanner

### 2.1 Reading 2D barcode & Symbology Setting

You can execute AT2DScanner coded from ATID to make sure that your AT570 scans barcodes exactly.

#### 1) Executing Scanner Diagnostics

[Start] -> [Programs] -> [Scanner] -> [AT2DScanner]

Note: If you don't have AT2Dscanner.exe(Ver 2.0) File, please look for our staff or visit ATID web site at [www.atid1.com](http://www.atid1.com) to download.

#### [Program Release Note]

1. Ver 1.0 : can only read barcode
2. Ver 2.0 : can read barcode and set up symbology

#### 2) Reading barcode(Ver 2.0)

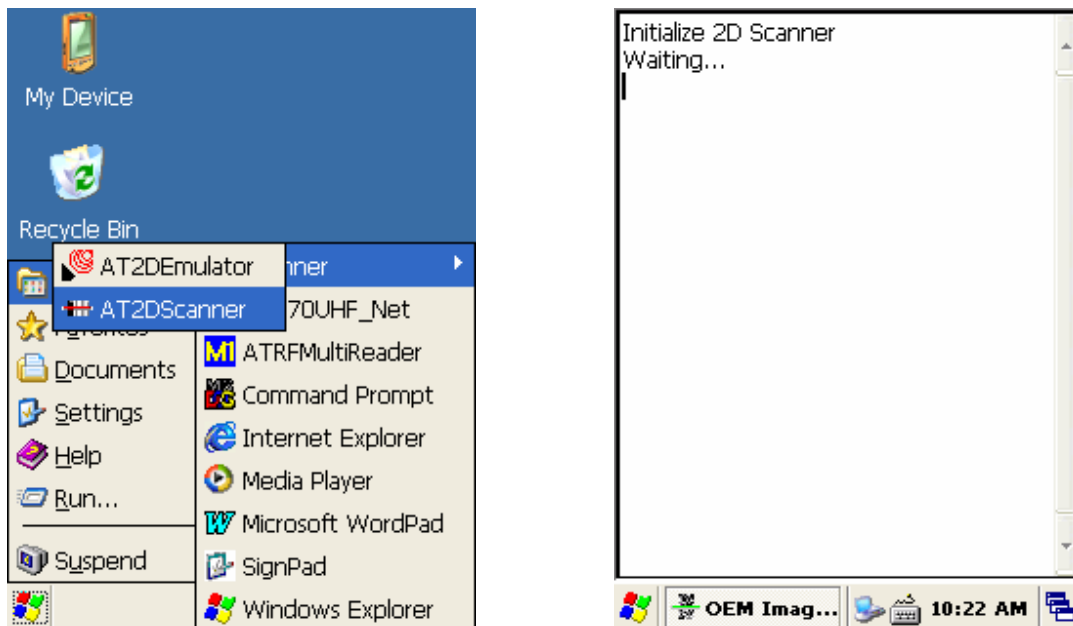
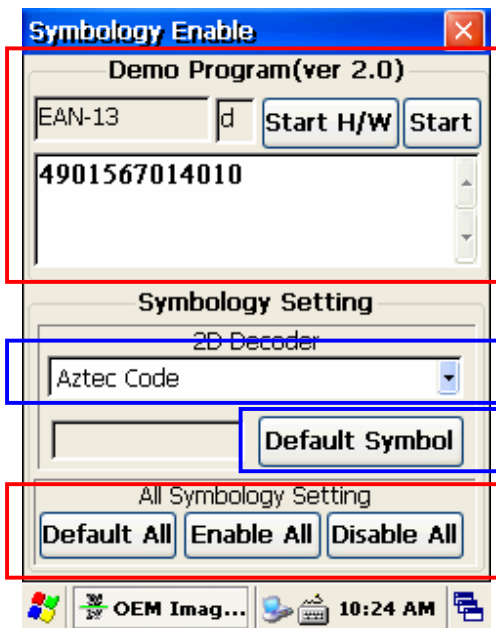


Figure 1. Wait till the program is initialized.

1. Press the L/R scanning button or Fn4, KBD key to scan barcode. You can also tap the " Start" on the screen to scan a barcode when the larger beam is aimed to a barcode.
  2. Make sure that your AT570 scans barcode exactly on the demo program.
- \* The scanned data will be displayed on the screen, if your AT-570 reads a tag exactly.
  - \* If you stop scanning before your AT-570 reads a tag completely – An abnormal sound comes out.



After Scanning barcode, the value you scanned will be displayed on the screen.  
 \* Start H/W button is for only checking H/W.

You can set up the selected Symbology Value with detail.

You can set up the selected Symbology Value to be factory default

Setting all Symbology  
 Default All : makes all Symbologies set to be factory default

Enable All : makes all Symbologies enabled to read  
 Disable All : makes all Symbologies disabled to read

Figure 2. 2D Scanner Function

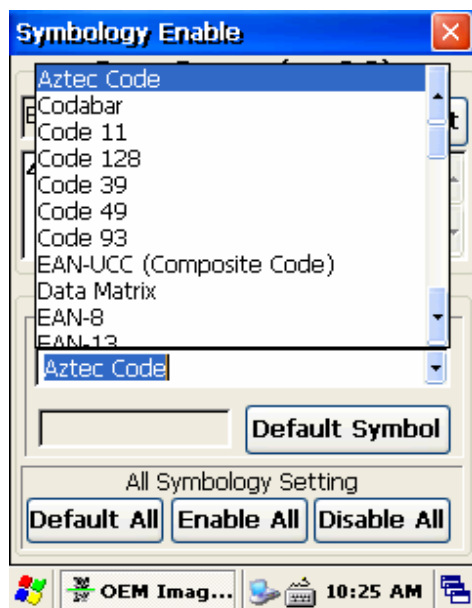


Figure 3. Select symbology

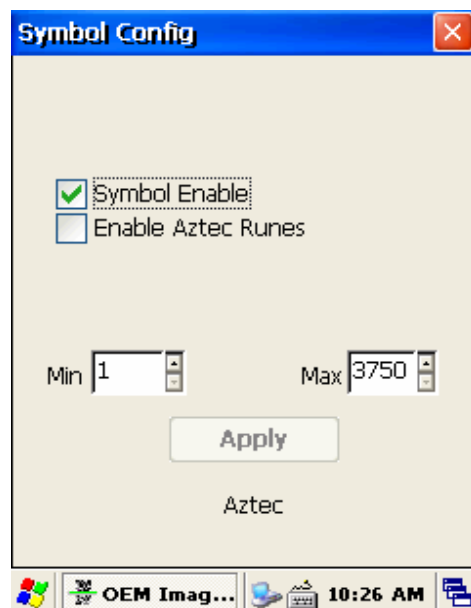


Figure 14. set up symbology with detail.

## 2.2 Setting the AT2DEmulator

You can input the barcode value you scanned in any application program that has a cursor after setting the AT1Demulator. Like an input device, the AT1Demulator makes data displayed in an application program (see the following figure)



Figure 5. Barcode value in the WordPad Program

### 1) Merit to use the AT2DEmulator

Because the AT2DEmulator can apply to all application programs that have a cursor such like Web program, Wordpad and others, you can input the scanned data directly without coding any application program.

### 2) To executing Emulator

Tap [Start] -> [Program] -> [Scanner] -> [AT2DTCEmulator]

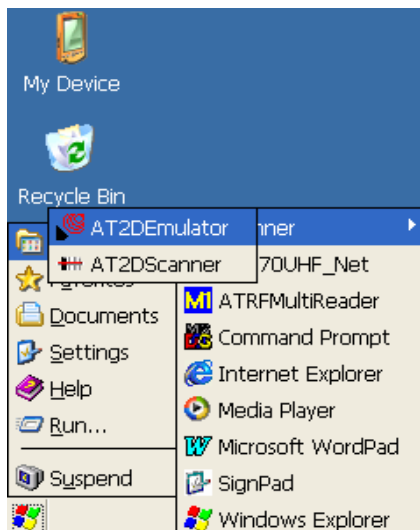


Figure 6. AT2DEmulator.exe

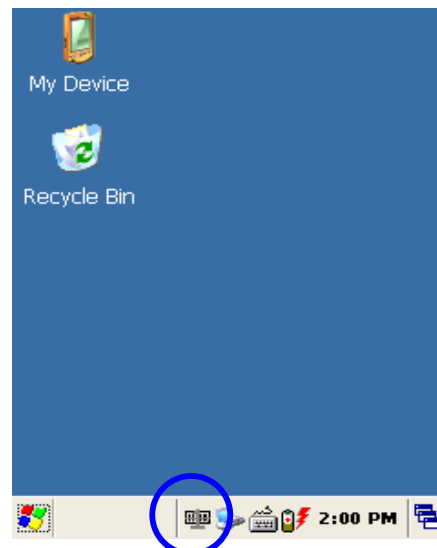


Figure 7. Tap this AT2DEmulator Icon

### 3) Setting the Emulator

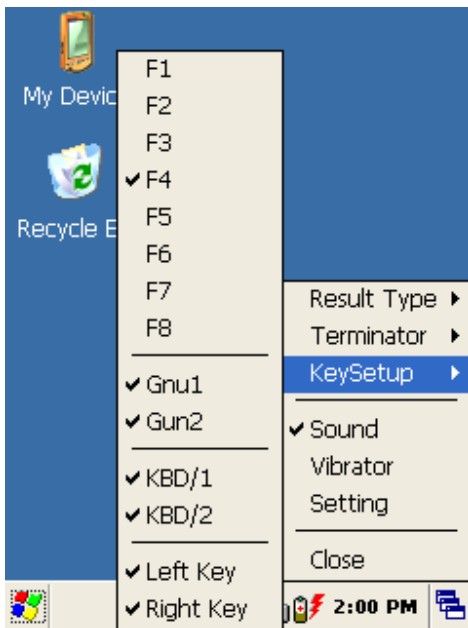


Figure 8. Setting Menu

#### 1. Result Type

There are 2 kinds of method to print the scanned barcode data where a cursor is pointing.

- A. Keyboard Event : Print the scanned barcode data like input Keyboard
- B. Copy & Paste : Print the scanned barcode data with Clipboard

#### 2. Terminator

You can set the termination code at the end of Barcode Value to tap “ Terminator” .

- A. None : No input the termination code.
- B. CRLF(Default Setting) : Carriage Return & Line Feed (Enter code)
- C. Space : Input Space code.
- D. Tab : Input Tab key code.

#### 3. Key Setup

You can make Hardware keys set to aim the lager beam.

- A. F1 ~ F8 Key : press those keys on the keypad to read barcode after setting.
- B. Gun1, Gun2 : Set for the gun-typed AT-570 .
- C. KBD/1, KBD/2 key : Same with the F1 ~ F8 Key
- D. Left Key, Right Key : Same with the F1 ~ F8 Key

- 4. Sound : set the sound On/Off after Scanning Barcode
- 5. Vibrator : set the Vibrator On/Off after Scanning Barcode
- 6. Setting : NO use.
- 7. Close : Make Emulator Program closed

### 2.3 Scanning Barcode

To use the scanning function, complete the following steps:

1. If you have not already done so, remove the protective plastic film before using devices equipped with a laser scanner.

#### Warning

Some AT570 come with laser scanners that scan using laser light. Never look directly into the laser light or shine the laser light into the eyes.

2. Select **Start > Programs > Scanner > AT1DScanner** to open the scanning application. This application runs in the background and only shows up as bar code icon in the system tray.

Figure 1. Scanning a bar code



3. Aim the scanning beam at the center of the bar code.
  - Position the device close to bar code when scanning small bar codes.
  - Position it at a distance when scanning larger bar codes.
  - The scanner stops scanning after you release the key or after five (5) seconds.

Figure 2. Scanning Beam Positions

#### Correct Scanning Position



#### Incorrect Scanning Position





Wrong ways to scan barcode

4. Press the Right or Left **<Scan>** key. The scanner scans as long as you hold the key or for five (5) seconds.
  5. Upon reading a bar code, the device beeps and vibrates until the trigger is released or after five (5) seconds. The beep tone and Vibrates indicate a good read.
- \*If the bar code scan failed, adjust the reading angle or distance. Make sure that the scanning beam scans across all bars of the bar code.**
6. The bar code data is entered in the current application. Once a bar code is read successfully, the scanner turns off automatically.

### 3. Wireless LAN

The AT-570 is versatile mobile computer that you can add to your wireless LAN. It has an internal 802.11 b/g radio to transfer data using wireless communications. This section of the manual assumes that you have already set up your wireless communications network including access points.

Your AT-570 supports TCP/IP network protocols. In a TCP/IP network, the AT-570 communicates with a host computer directly using TCP/IP. The access point acts a bridge to allow communications in wireless networks.

#### 3.1 Making Wireless LAN ON

The default of Wireless LAN was set with “WLAN off” when your AT-570 was manufactured at the factory.

To make wireless LAN on:

Press FN key and Esc key at the same time, then you can see the following screen.

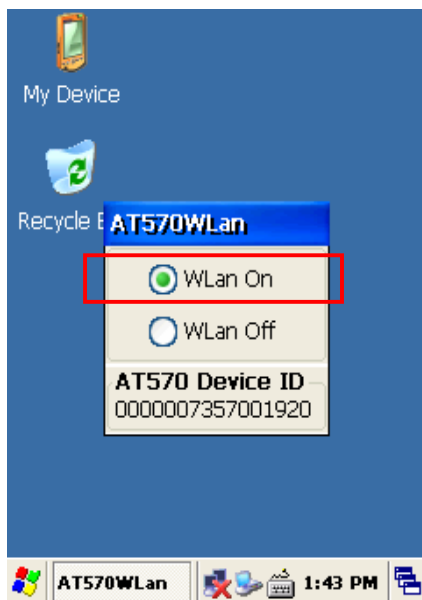


Figure 1. Wireless icon

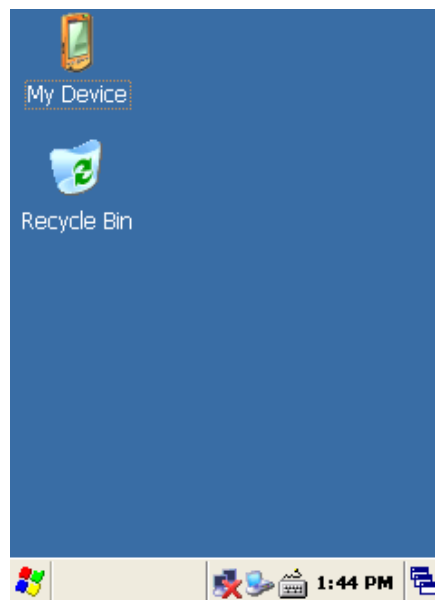


Figure 2. Select AP

After selecting “ WLAN On” the LAN icon appears on the control bar.  
Connecting your AT-570W to a network device:  
Double tap LAN icon > tap Wireless Information.

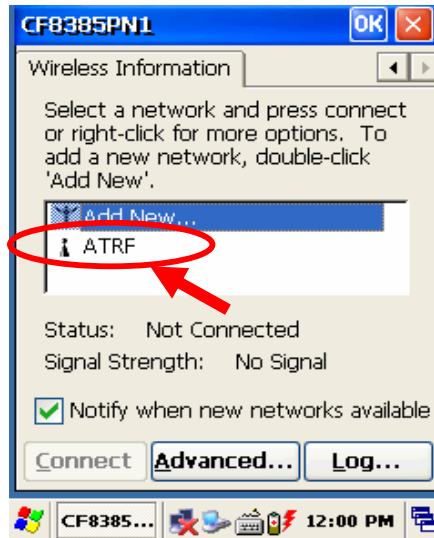


Figure 3. Select AP

Select a network that your AT-570W has scanned in the list box, and tap Connect after selecting the network, then the network will be connected to your AT-570W.

### 3.2 IP Information

To see IP Information:

Double-tap the LAN icon, and tap IP Information tap.

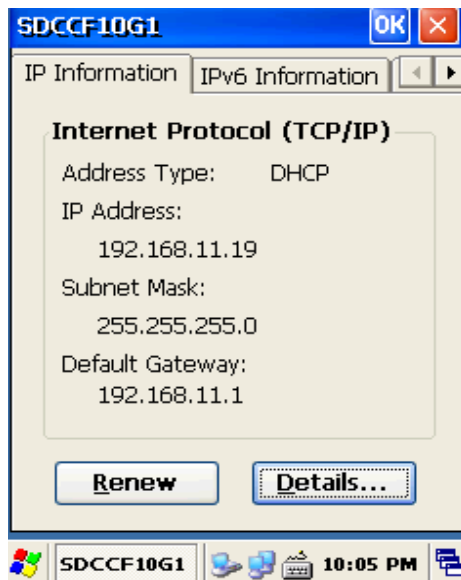


Figure 4. IP Information

### 3.3 Setting with manual method

You can also connect your AT-570W to a network with manual method in the Wireless Properties.

To set wireless LAN in Wireless Properties:

Double tap WLAN icon > tap WLAN Tap > Input data > Tap “ OK”

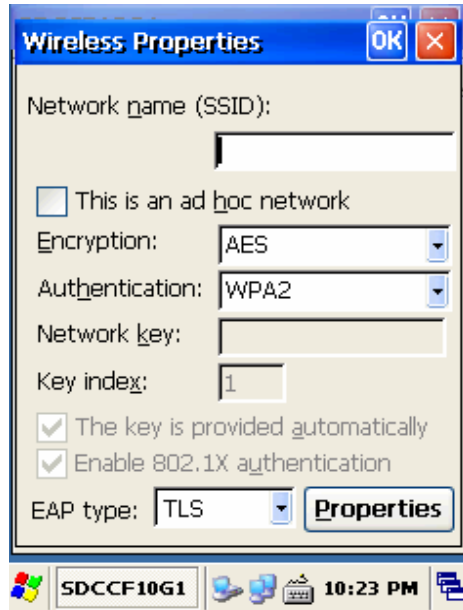


Figure 5. Wireless Properties

### 3.4 Making WLAN Off

To make wireless LAN Off:

Press FN key and Esc key at the same time, and select WLAN Off



Figure 6. Wireless Off

## 7. GPS Module

Options to install the GPS Module



Figure 1 (Port : COM6)

GPS Module designed to be installed on the top of the AT570



Figure 2 (Port : COM9)

GPS Module designed to be installed on the rear of AT-570



Figure 3. GPS Module designed to be installed on the Car Cradle (COM9)

### 7.1 Executing the GPS

To execute GPS:

Tap start > program > GPS\_xxx.exe

### 7.2 Configuring the Port and Baud Setting for Executing the GPS

To use the GPS installed on your AT-570, you need to make the GPS' s power on. For that, please double-click the " GPS\_Power\_Init " -the EXE file that in the " Flash Disk" . And than tap the GPS EXE icon, the following GPS screen appears.

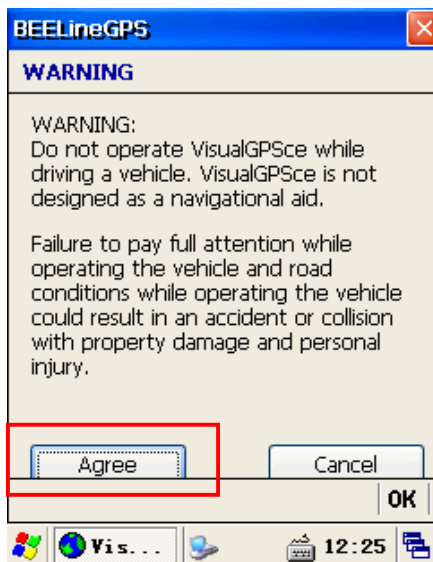


Figure 4. Executed GPS screen

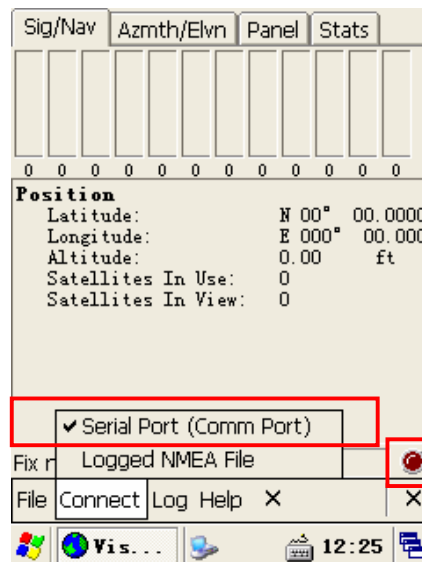


Figure 5. Comm Setting

If you tap the Agree tap in the figure 5, the Comm Setting screen appears. For executing the GPS, you need to configure the port and baud at first. Select the “ connect” on the command bar, and select Serial Port(Comm Port) in the pop-up menu.And select these settings.

GPS port: COM9(GPS\_in.exe, GPS\_Car.exe) or COM6(GPS\_Top.exe)

Baud: 9600 bps

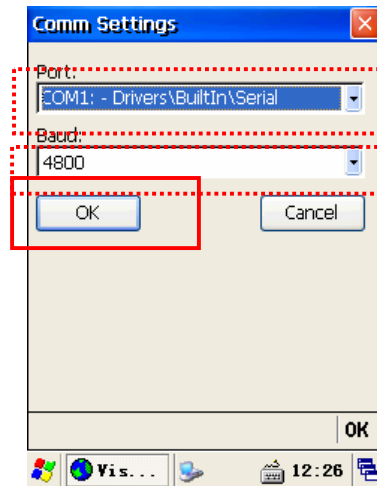


Figure 6. Comm Setting screen

Tap “ OK” after configuring Port and Baud

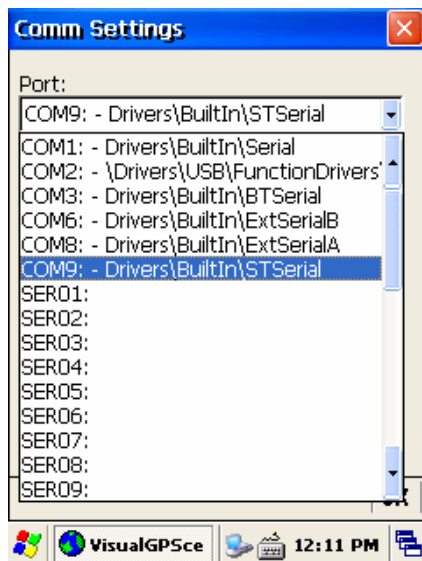


Figure 7. Com Port Setting

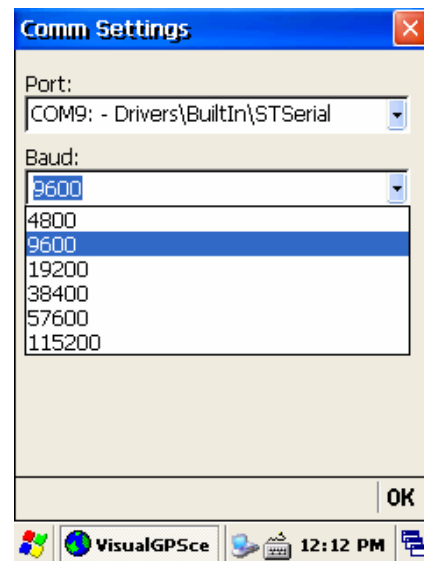


Figure 8. Baud Rate Setting

### 7.3 Checking up the GPS status

After tapping “ OK ” if the program is operated normally, you can see the red lamp (see the ① in the figure 26) glittering.

The data received appears in the part of the ② (but according to the reception status it takes more or less time to access data.)

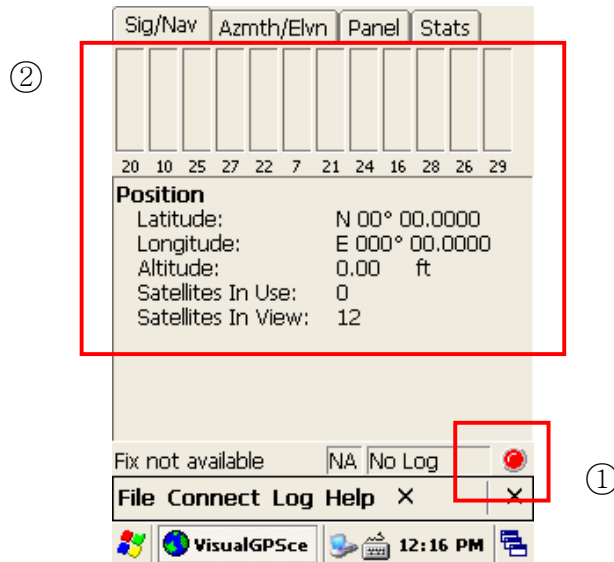


Figure 9. GPS Reception Status

#### Checking GPS Data Reception

1. First check whether GPS Data reception is working normal in open space is or not.
2. GPS Data reception time is different by circumstance.(3 ~ 10 minutes)
3. It is quickly receipt GPS data if it has been receipted from satellite.



## 9. Using Camera

### 9.1 To use your Camera:

Tap start > Program > Camera

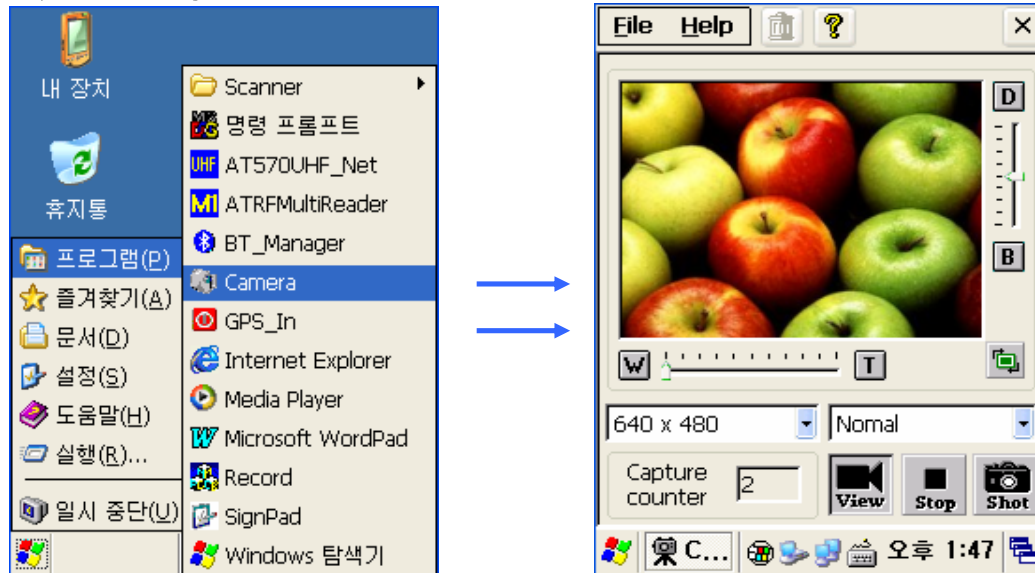


Figure 1. Executing Camera

### 9.2 Camera Screen

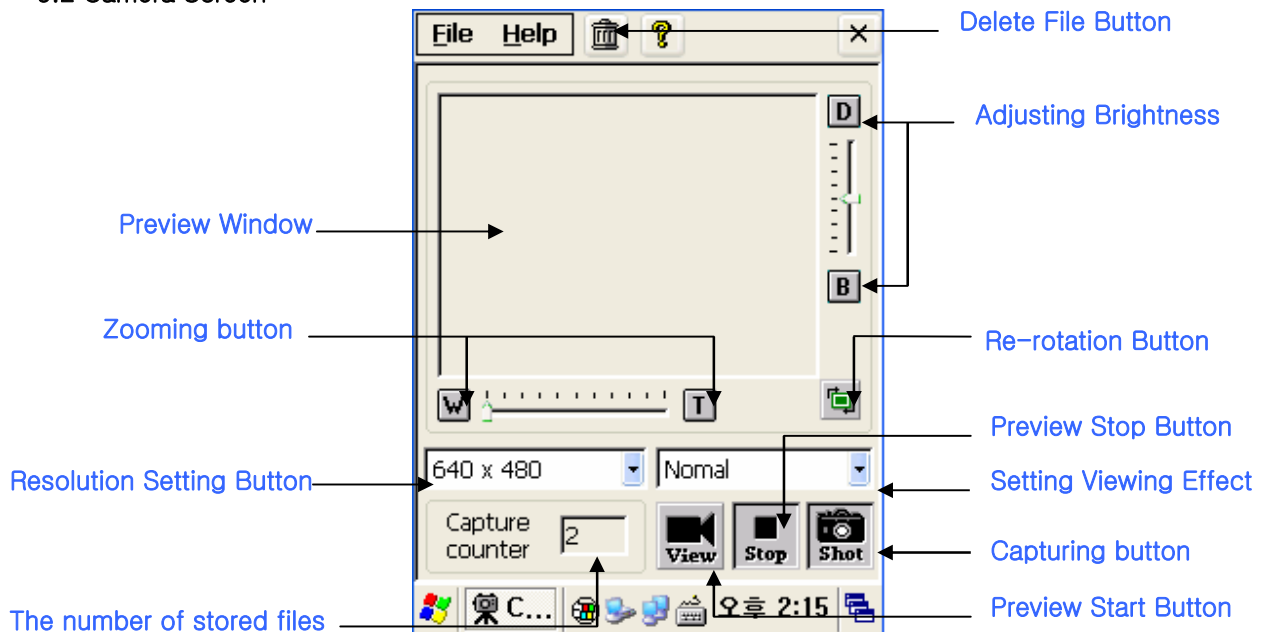


Figure 2 Camera Screen

# Chap 4. USER INFORMATION

## Cautions

Modifications not expressly approved by the party responsible for compliance could void the user's authority to operate the equipment.

## FCC compliance Information

This device complies with part 15 of FCC Rules.

Operation is subject to the following two conditions: 1. This device may not cause harmful interference, and 2. This device must accept any interference received. Including interference that may cause undesired operation.

## Information to User

This equipment has been tested and found to comply with the limits for a Class B digital device, Pursuant to part 15 of the FCC Rules. These limits are designed to provide reasonable protection against harmful interference in a residential installation.

This equipment generates, uses and can radiate radio Frequency energy and, if not installed and used in accordance with the instructions, may cause harmful interference to radio communications.

However, there is no guarantee that interference will not occur in a particular installation. If this equipment does cause harmful interference to radio or television reception, which can be determined by turning the equipment off and on, the user is encouraged to try to correct the interference by one or more of the following measures:

- Reorient or relocate the receiving antenna.
- Increase the separation between the equipment and receiver
- Connect the equipment into an outlet on a circuit different from that to which the receiver is connected.
- Consult the dealer or an experienced radio/TV technician for help.

## FCC WARNING:

This equipment may generate or use radio frequency energy. Changes or modifications to this equipment may cause harmful interference unless the modifications are expressly approved in the instruction manual. The user could lose the authority to operate this equipment if an unauthorized change or modification is made.

## FCC RF Radiation Exposure Statement

This equipment complies with FCC RF radiation exposure limits set forth for an uncontrolled environment. This equipment should be installed and operated with a minimum distance of 20 centimeters between the radiator and your body.