



Levitating Air Bluetooth Speaker – Air-controlled Speaker
 Air consists of a UFO Bluetooth speaker and a magnetic base. Air Bluetooth speaker uses air control sensor to turn on and shut off the speaker. The high capacity rechargeable lithium battery charges up to 2 hours of continuous use via the USB interface. Due to the magnetic levitating design, the speaker suspended in the air while playing music. Without obstacle and less waste of energy, the speaker can emit more crisp and clear voice. The tailor-made balance support assistive bracket solves the difficulty of centering, and it also reduces the ground impact damage opportunities caused by positioning failure.

- Features**
- The World's First Air-controlled Levitation Bluetooth Speaker
 - Exclusive air-controlled operation to prevent falling
 - Levitation decorative lights to enhance eye-catching effect in darkroom
 - Special balance support tool for easy positioning
 - The Bluetooth speaker can be used alone or magnetic attached on metal surface like refrigerator
 - High quality Li-ion rechargeable battery
 - The Air Platform includes the base magnet plus 4 positioning LEDs and 3 strong suction cups on the bottom.

Specifications
 Weight: Speaker: 230g; Platform: 550g
 Dimension: Speaker: Ø114x63mm; Platform: Ø155x30mm
 Output: 3W
 Frequency: 200Hz—18KHz
 Blow Control Distance: ≤10mm
 Battery: Li-ion Rechargeable
 Working Voltage: 3.7 V
 Cable: Micro USB Cable x1 (for speaker); AC Adapter x1 (for platform)

- Unpack**
 Carefully unpack all of the elements included in the box and confirm that you have all of the following:
1. Air Speaker (upper levitation half) – Blow to control turning On and Off the music
 2. Air Platform (lower base section)
 3. Assistive Bracket – Balance support
 4. AC Adapter
 5. Micro USB Charging Cable for floating speaker unit

Charging Levitating Speaker

1. Make sure that your Bluetooth speaker is fully charged before using it. A full charge is approximately 2 hours and plays up to 2 hours (in 60% volume) then.
2. Connect to a USB charging cable or use USB to DC adapter to charge.
3. When the LED light indication is RED, the device is charging.
4. The LED light indication goes off when the device is fully charged.
5. Four short monosyllabic appear when the battery is low, please charge your speaker immediately.

Pairing
 Connect with the Smartphone before using the Bluetooth speaker.

1. Switch the Bluetooth Speaker to ON position and hear two short monosyllabic to entering searching mode.
2. Activate Bluetooth on the phone
 - a) Search for new device on your phone.
 - b) Choose "ASP-718"
 - c) Press "Yes" or "OK" on the phone and confirm with PIN code 0000 (4 zeros) if asked.
 - d) Pairing Successful.
3. When a single tone appears and the white LED flashes slowly, the Bluetooth speaker is connected.

Centering, Positioning and Levitating

1. Choose a suitable location to place the platform. Please note: once in position, it is difficult to move because of the 3 strong suction cups on the bottom.
2. Plug in the adapter and connect to the platform.
3. Turn on the switch on the platform, and see the 4 positioning LED lights turned on.
4. Turn on the Bluetooth speakers by switching to ON position.

PLEASE NOTE: (1) if idle for 5 minutes without connecting Bluetooth device, the speaker automatically enters the sleep mode; air control (a quick blow) can restart. (2) if the speaker is connected to the Bluetooth device but does not work in 5 minutes, the speaker automatically shut down to save power; switch back to the OFF position and switch again to the ON position to restart. (3) due to the air control sensor is very sensitive, please turn off the power if not using the speaker for a long period.

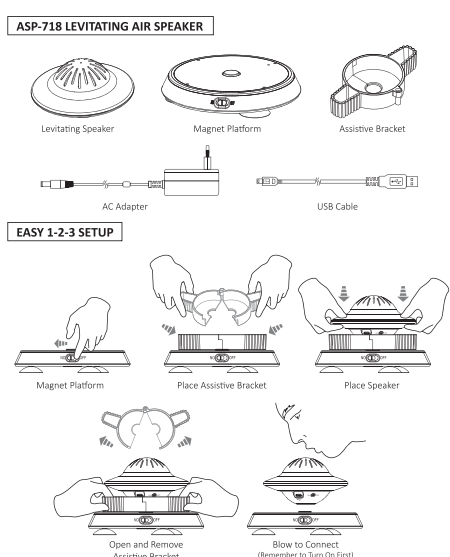
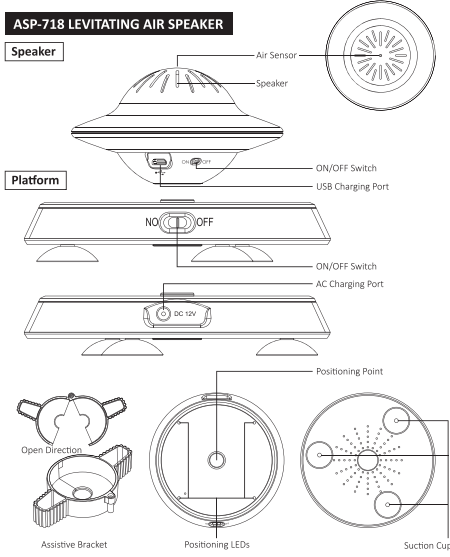
5. Place the two assistive bracket on the top and the centre of the platform surface. There is a circular area in the centre of the platform. There is also a small nub in the centre of the two assistive bracket that fits into this area which assures that it is centered.
6. Taking care to keep the speaker horizontal with two hands and place it on top of the assistive bracket gently. While centering, the 4 LEDs blink until a reverse force to levitate the speaker.

7. Each hand with two fingers pinched to open the assistive bracket towards one direction fairly quickly. This should be a smooth and continuous motion.
8. If done correctly the floating speaker will automatically find its levitation height and center itself! You will know if you have been successful because if so you will be able to spin the magnet and it will turn freely. If it rests against the assistive devices or the platform then you were not successful and will need to lift it up the magnet and try again. (Note: This procedure becomes quite easy after you become familiar with the steps.) Do not move the platform while positioning the speaker.
9. Breath on top of the floating speaker to connect with your Bluetooth device and start playing musics.

PLEASE NOTE: Blow quick (about 1 second) on top of the air sensor to open and close the speaker. Keep the distance in 10mm for the best air control, and keep each switch interval for at least 3 seconds is appropriate.
CAUTION: When electricity to the speaker is removed the levitating magnet will fall. Please always remove the speaker before turn off the power of the platform.

IMPORTANT
STRONGLY RECOMMEND TO USE THE ASSISTIVE BRACKET IN THE BOX TO DO CENTERING AND LEVITATION TO PREVENT FROM HIGH TEMPERATURE AFTER LONG PERIOD OF UNSUCCESSFUL SETTING.

- The electromagnetic field sensor inside the Levitating Air Speaker is designed to automatically turn off power to the unit under certain conditions such as overheating in order to prevent damage to the circuitry and ensure long product life. So, if after a few tries, you have not successfully levitated the platform in 10 minutes, wait another 10 minutes or more for the platform to cool down before your next attempt. When not using the assistive bracket to operate manually, the longer the failed attempts, the higher temperature the platform generates. It is more difficult to find the balance on an overheated platform. Please turn off the power of the platform after several attempts in 10 minutes, and wait for another 10 minutes for the platform to cool down, and then turn on the power of the platform again.
- Make certain this device is installed on a flat surface.
- People with pacemakers should not use or be near this device.
- The Levitating Air Speaker is not a toy and is not suitable for children under 14 years of age.
- The Levitating Air Speaker uses very strong magnets, so you will want to set it away from televisions, computers and other items adversely affected by magnetic fields.



NOTE: This equipment has been tested and found to comply with the limits for a Class B digital device, pursuant to part 15 of the FCC Rules. These limits are designed to provide reasonable protection against harmful interference in a residential installation. This equipment generates uses and can radiate radio frequency energy and, if not installed and used in accordance with the instructions, may cause harmful interference to radio communications. However, there is no guarantee that interference will not occur in a particular installation. If this equipment does cause harmful interference to radio or television reception, which can be determined by turning the equipment off and on, the user is encouraged to try to correct the interference by one or more of the following measures:

- Reorient or relocate the receiving antenna.
- Increase the separation between the equipment and receiver.
- Connect the equipment into an outlet on a circuit different from that to which the receiver is connected.
- Consult the dealer or an experienced radio/TV technician for help

Changes or modifications not expressly approved by the party responsible for compliance could void the user's authority to operate the equipment. This device complies with Part 15 of the FCC Rules. Operation is subject to the following two conditions:

- (1) this device may not cause harmful interference, and
- (2) this device must accept any interference received, including interference that may cause undesired operation.