

# Table of Contents

## Getting Started

Introduction .....	1
Key Features .....	1
Package Contents .....	2
Installing the Battery .....	2
Parts Description .....	3
Control Keys .....	3
LCD Screen .....	4

## Downloading and

### Transferring Files

Install the digital audio player CD software .....	5 - 6
Safely remove your player from the computer .....	7
Transferring files .....	8

## Operation

Listening to Music .....	9
Using the MAIN MENU .....	9 - 12
MUSIC .....	10
FM RADIO .....	11
VOICE REC .....	12

## Customizing the Player

Using the SETTING MENU .....	13
REC RESOLUTION .....	14
CONTRAST .....	14
EQUALIZER .....	14
PLAY TIMER .....	14
REPEAT .....	14
LIGHT TIMER .....	14
LANGUAGE .....	14
AUTO SCAN .....	14

## Additional Information

Formatting the Internal Memory Procedure .....	15 - 16
Precautions .....	17
Trouble Shooting .....	18
Technical Specifications .....	19
Care and Maintenance .....	20

# Getting Started

## INTRODUCTION

Your U-88 is a device that stores and plays multi-format digital audio files including MP3, WMA and WAV files. Download hours of music onto your PC and transfer them to your U-88 digital audio player. Use your U-88 to record those quick reminder memos or even lengthy business meetings or lectures. Record programs or songs directly from an FM radio station or just use it to listen to your favorite FM station.

## KEY FEATURES

- Multi-format player supports MP3, WMA and WAV files.
  - MP3: (MPEG1 LAYER3) is an audio compression format that enables a WAV file to be compressed to about 1/12 of its original size, while maintaining the original sound quality.
  - WMA: (Windows Media Audio) is Microsoft's music file compression format that enables WAV files to about 1/6 of its original size while maintaining the original sound quality.
  - WAV: (ADPCM encoding) is the file format for voice or FM tuner recordings.
- USB data transfer: Use the supplied USB cable to move MP3, WMA and WAV files from your computer to your unit.
- Windows Plug & Play support for Windows ME, 2000 and XP.
- Windows 98 SE compatible: Install the driver with the enclosed CD-ROM so that your computer will recognize the device.
- Built in FM tuner with auto scan and 10 station memory.
- FM tuner records FM radio programs and stores them as WAV files.
- Internal microphone for voice recording with adjustable quality level settings (select high, normal or low quality levels).
- Upgradeable Firmware
  - Update the latest features via free downloads from our website: [www.ann11.com](http://www.ann11.com)
  - Windows 98 SE operating systems may need to upgrade the Windows OS before upgrading the firmware.
- Power equalizing allows you to set the frequency level according to 6 music categories: Normal, Rock, Ultra Bass, Jazz, Classic and Pop.
- Full Graphic LCD for displaying information with blue-color backlight.
- Power saving feature automatically turns off when the player is idle for 3 minutes.
- Low battery level indicator.

## Getting Started

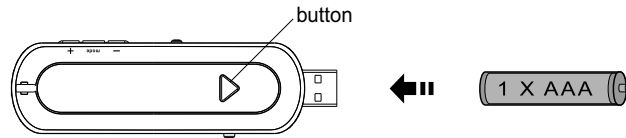
### PACKAGE CONTENTS

#### Check that you have the following accessories:

- ◆ Stereo Earphones
- ◆ USB Cable
- ◆ Installation CD-ROM with Windows 98SE Driver
- ◆ Carrying Pouch
- ◆ Neck Strap
- ◆ Instruction Manual
- ◆ One AAA Alkaline Battery

### INSTALLING THE BATTERY

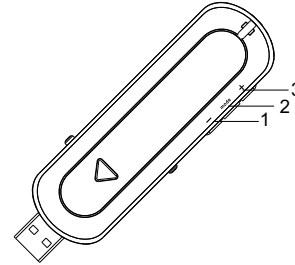
Press the button and then push the battery compartment door in the direction the button is pointing. Insert the battery with the correct polarity as shown. Close the battery compartment door.



- To avoid battery leakage or corrosion, remove the battery from the player if the player is not to be used for a long time.
- Remove dead battery from the player immediately to avoid damaging the player.
- When corrosion occurs, wipe the battery compartment immediately with a dry cloth and insert a new battery.

## Getting Started

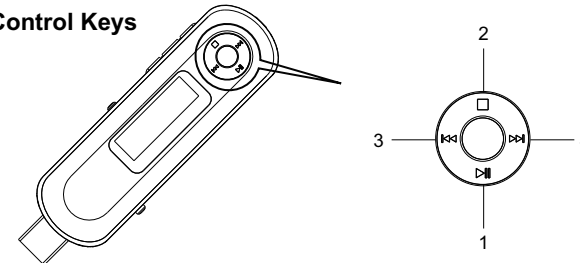
### PARTS DESCRIPTION



1. Press to decrease the volume.  
Press and hold the button down to decrease the volume rapidly.
2. Press and hold to access the SETTINGS menu.  
Press to access the MAIN MENU.
3. Press to increase the volume.  
Press and hold the button to increase the volume rapidly.

### CONTROLS

#### Control Keys



There is a **NAVI** button that controls several key functions. Moving it up, down, right or left will achieve the following actions.

1. Press to turn on the power.  
Press to play or pause.
2. Press and hold to turn off the power.  
Press to stop.
3. Press to select the previous file or track.  
Press and hold the button to rewind.
4. Press to select the next file or track.  
Press and hold the button to fast forward.

## Getting Started - Controls

### LCD SCREEN



## Downloading and Transferring Files

### INSTALL THE DIGITAL AUDIO PLAYER CD SOFTWARE

#### For Windows 98SE:

Windows 98SE will not recognize the player until you have installed the driver using the included installation CD-ROM. Follow the instructions detailed in this section to activate the USB mass storage function so you will be able to transfer files from your computer to your player.

#### For Windows ME, Windows 2000 or Windows XP:

These version of Windows will automatically detect your U-88 player after connection with USB port is established. In order to format the player, update or uninstall the software, you will need to install the software on the included CD-ROM.

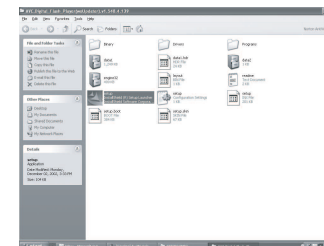
#### Procedure to Install Digital Audio Player Software

When connecting your player to your computer for the first time, please follow these instructions:

1. Insert the Installation CD-ROM into the CD Drive. The Auto-run program will start to install the player driver automatically as shown.

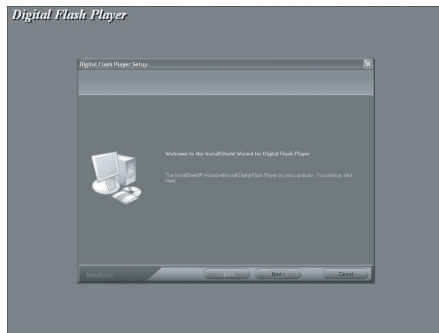


**NOTE:** If the setup does not start, please run the setup.exe under your CD-ROM Drive directory. Double click "setup" in the installation CD.



## Downloading and Transferring Files

2. Follow the on screen instructions to install the software.



3. After successfully installing the software, the "Digital Flash Player" program will appear in the "Start" menu.

## Downloading and Transferring Files

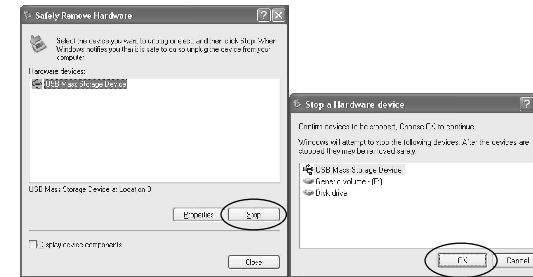
### SAFELY REMOVE YOUR PLAYER FROM THE COMPUTER

**NOTE :** To avoid damage to your player or data loss, always follow the procedure listed below before disconnecting the USB cable from your computer or disconnecting the player from the USB cable.

Using your mouse, double click the "Safely Remove Hardware" icon on the task bar



From the "Safely Remove Hardware" window, select "USB Mass Storage Device" and click the "Stop" button. The "Stop a Hardware Device" window will pop up as shown.



Click "OK" and when a "Safe to Remove Hardware" window is displayed you may remove the player from the USB cable or remove the USB cable from the computer.



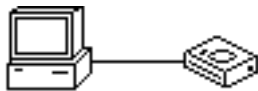
**Remarks:** If you do not see the "Safely Remove Hardware" icon on the task bar. Please go to my computer, right click on "Removable Disk", double click "eject". The "Safely Remove Hardware" window will pop up and follow the step on the above.

## Downloading and Transferring Files

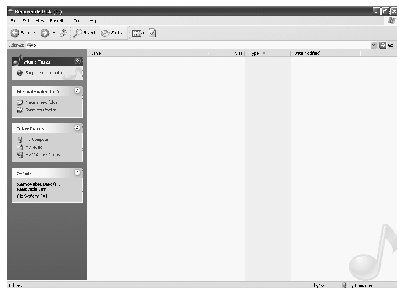
### TRANSFERRING FILES

Push the USB button and then slide it to the left in order to expose the USB Plug. Then connect the unit to your computer either directly or by using the supplied USB cable.

Press the ►|| button to turn the player on. The following will be displayed in the LCD:



A "Removable Disk" window will appear in "My Computer".



Locate the files you wish to copy from your computer to your player. Drag and drop MP3, WMA or WAV files on your computer into the "Removable Disk" window. These files will now be copied onto your player.

**NOTE** : When you are finished transferring files, please follow the Safely Remove Hardware Procedure on the previous page before disconnecting your player.

## Operation

### LISTENING TO MUSIC

After you have transferred MP3, WMA or WAV files from your computer to your player, you can start listening to music while you learn how to use all of the features.

With the battery installed, insert the earphones into the earphone jack of player.

Press the ►|| button to turn the player on.

Use the control keys and the NAVI button to pause, play, stop, fast forward or reverse and adjust the volume.

### USING THE MAIN MENU

Press the **mode** button to access the MAIN MENU. The following menu will be displayed on the LCD screen:



Using the **NAVI** button, press ►|| or ◀◀ until your desired selection is highlighted and press the ►|| button down to select.



## Operation - Using the MAIN MENU

### MUSIC PLAYER

To listen to any of the files or songs stored in your player or run the program list, you can select the MUSIC PLAYER mode.



#### Using the control buttons

- Press ►|| button to play or pause playback.
- Press ■ button to stop.
- Press and hold ■ button to turn off the power.
- Scroll up + to increase the volume and scroll down - to decrease the volume.
- Push ►► to select the next track. Push ◀◀ to select the previous track.
- Push and hold ◀◀ for fast rewind. Push and hold ►► for fast forward.
- Slide **hold** button to the right to lock all buttons and slide **hold** to the left to unlock all functions and return to normal playback.

## Operation - Using the MAIN MENU


### FM RADIO

The unit has a built in FM tuner with auto scan and ten station memory. In addition to listening to your favorite station, you can also record a song or program.

Press the **mode** button to access the MAIN MENU. The following menu will be displayed on the LCD screen, highlight the icon as shown and press the ►|| button to confirm.



#### Using the preset channels

- In order to use the **preset** function, you must first complete an Autoscan. Please see the "Autoscan Setting" in the "Using the Setting Menu Section" for details.
- Press the ■ button to display the preset icon  in the lower right hand corner of the display.
- Use the ►► to select the next preset station and use the ◀◀ to select the previous preset station.
- Press the ■ button to turn off the preset mode.

#### Recording an FM radio station

- Press the ►|| button to start recording.
- Press the ■ button to stop recording.
- The recorded file can be played by returning to the Music Player mode.

## Operation - Using the MAIN MENU

### VOICE RECORDER

Use your unit to record quick reminder memos or even lengthy business meetings or lectures.

Press the **mode** button to access the MAIN MENU. The following menu will be displayed in the LCD screen, highlight the icon as shown and press the **▶||** button to confirm.



### Recording a voice message

- Press and hold the **▶||** button to start recording.
- Press the **■** button to stop recording.
- The recorded file is saved as WAV format.

### Playing the Recorded File

- Press the **▶||** button to play the recorded file.
- Press the **■** button to stop.
- Push **⏪** to select the previous recorded file.
- Push **⏩** to select the next recorded file.

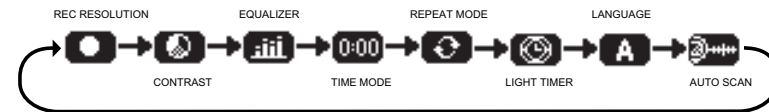
**NOTE :** - The volume is not controlled during recording.  
- You may select three different quality levels to record. Please see the Recording Resolution in the Customizing Your Player section.

## Customizing Your Player

### USING THE SETTING MENU

You have the option to change the way your player displays, records and plays the files you have stored.

Press and hold the **mode** button to display the SETTING Menu on the LCD screen.



Use the **⏪** or **⏩** to select one of the following setting options: Recording Resolution, Contrast, Equalizer, Time Mode, Repeat, Back Light Timer, Language or Auto Scan.

Press the **▶||** button to confirm and enter each setting.

To exit the SETTING Menu, press the **mode** button.

## Customizing Your Player - Using the SETTING Menu

### Recording Resolution Setting

Use to select one of the three voice recording resolution settings: High, Middle or Low.



### Contrast Setting

Use to adjust the LCD contrast level.



### Equalizer Setting

Use to select one of the six music equalizer effects: Normal, Rock, Ultra Bass, Jazz, Classic or Pop.



### Play Timer Setting

Use to display the song timer as ELAPSED TIME or REMAINING TIME.



### Repeat Setting

Use to select between Normal, Repeat One, Repeat All, Shuffle or Shuffle Repeat.



### Back Light Timer Setting

Use to set the duration of LCD backlight timer. Select: OFF, 5 sec, 10 sec, 15 sec or always.



### Languages

Select from Menu to change the user interface language or choose ID3 to change the file name display language.



### Auto Scan

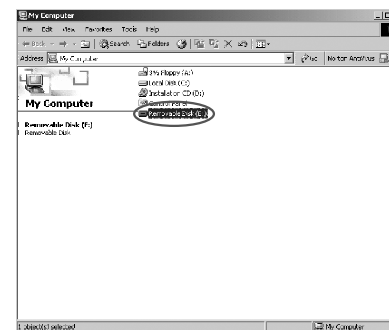
While in FM Mode select Autoscan in order to save the 10 strongest stations as preset channels.



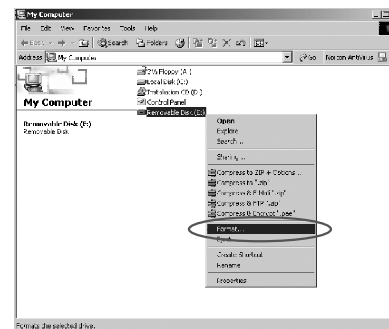
## ADDITIONAL INFORMATION

### FORMATTING THE INTERNAL MEMORY PROCEDURE

1. Ensure the Digital Audio Player is ON.
2. Use the supplied USB cable to connect between Digital Audio Player and PC.
3. Double click My Computer icon on the desktop. You can find a "Removable Disk" is added to your computer.



4. Right click on the Removable Disk then select Format.

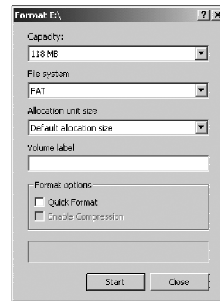




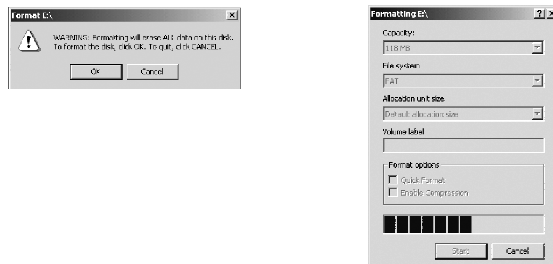
## Additional Information

5. The following dialogue box will appear. Select the FAT file system only, then **click START** to proceed for formatting the drive.

**Important: Do not select other file systems, it will cause malfunction of the unit.**



6. Then click OK to start for formatting the drive.



7. When format is complete, click OK to finish.



## Additional Information

### PRECAUTIONS

#### Copyright

- ◆ Making copies of MP3 tracks or files without permission is a violation of the international copyright laws.

#### Safety

- ◆ Vibration experienced during walking or exercising will not affect the player. However, dropping the player or dropping a heavy object on the player may result in damage or sound distortion.
- ◆ Avoid spilling any liquid onto or into the player.
- ◆ Do not leave the player in a location near extreme heat sources or in a car with the windows closed during excessive heat. Do not leave in a place subject to direct sunlight, excessive dust or sand, moisture, or rain.

#### On Headphones and Earphones

##### Road Safety

- ◆ Do not use the headphones/earphones while driving, cycling, or operating any motorized vehicle. It may create a traffic hazard and is illegal in some areas. It can also be potentially dangerous to play your headsets at high volume while walking, especially at pedestrian crossing. You should exercise extreme caution or discontinue use in potentially hazardous situations.

##### Preventing Hearing damage

- ◆ Avoid using the headphones/earphones at high volume. Hearing experts advise not to play loud music for a long period of time. If you should experience ringing in your ears, reduce the volume or discontinue use.

##### Consideration for others

- ◆ Keep the volume at a moderate level. This allows you to hear the sound and still be considerate to the people around you.

## Additional Information

### TROUBLE SHOOTING

Should any problem persist after you have checked these symptoms, consult your dealer or contact the support site at [www.ann11.com](http://www.ann11.com)

Symptom	Possible Reason	Actions
No Power	♦ Check whether the battery is exhausted.	♦ Replace with a new battery.
	♦ Check whether the battery has not been installed properly	♦ Re-install the battery according to the polarity.
No Sound from the earphones	♦ Check whether the jack is detached from the unit.	♦ Re-install the earphones again.
	♦ Check whether the VOLUME is set to "0".	♦ Increase the volume.
	♦ Check whether the battery is exhausted.	♦ Replace with a new battery.
	♦ Check whether the plug is contaminated / oxidized.	♦ Clean the jack.
Invalid Character on LCD	♦ Corrupted MP3 or WMA file.	♦ Download the files again.
	♦ The language isn't supported	♦ Visit our website to see whether a new revision firmware is released.
Poor FM Reception	♦ Weak signal.	♦ Adjust the position of player and earphones.
	♦ Electrical interference by other electrical appliances.	♦ Turn off the electrical appliances. ♦ Walk away from the interference sources.
Failed to download or upload of MP3/WMA/WAV file	♦ Check whether the battery is exhausted.	♦ Replace with a new battery.
	♦ Check the connection of USB cable.	♦ Re-plug the cable at both ends.
	♦ Damaged USB cable.	♦ Replace a new USB cable.
Cannot record Voice or FM Tuner	♦ Memory is full.	♦ Release some memory space by deleting some files.
	♦ Memory is full.	♦ Release some memory space by deleting some files.

## Additional Information

### TECHNICAL SPECIFICATIONS

Category	Item	Specification
Audio	Frequency Range	20Hz - 20KHz
	Headphone Output S/N Ratio	20mW, 16ohm (Max.Vol) 85dB (MP3)
File Support	File Type	MPEG 1/2/2.5 Layer 3, WMA, WAV (ADPCM)
	Bit Rate	8kbps - 320kbps
	Tag Info	ID3 Tag
FM Tuner	FM Frequency range	87.5MHz - 108MHz
	Antenna	Headphone / Earphone Cord Antenna
	Dimension	97mm x 30mm x 21.5mm
	Weight	35g (Without battery)
	Battery	1 x AAA Alkaline Battery
	LCD	Full Graphic with Blue Color Backlight
	Language	English / Simplified Chinese / Traditional Chinese / Korean / Japanese
	USB	USB 2.0
	Built-in Memory	128 MB / 256 MB / 512MB
	Max. Playtime	Approx. 10 hours (128kbps, MP3)
	Supported OS	Win ME, Win 2000, Win XP, Mac OS 10.2.8 or higher Win 98 SE (Driver is required)
	Firmware Upgradeable	Yes
	Operating Temperature	23°F to 104°F (-5°C to 40°C)

## Additional Information

### CARE AND MAINTENANCE

Your Digital Audio Player is a precision electronic device, and should not be subjected to rough handling or exposed to extreme temperatures or moisture. Do not use chemical agents or liquids to clean the unit, as they may damage the plastic. Be sure to remove the batteries before cleaning the unit. Weak batteries should be replaced promptly, since they can leak and damage the player. Please also note the following, regarding the use of batteries.



*Caution: Use only alkaline or zinc carbon batteries. Do not mix different types of batteries or new and used batteries. Be sure to observe the correct polarity when installing the batteries. Worn out batteries should be removed from the unit promptly.  
Do not short circuit the supply terminals.*

### Please retain this information for future reference.

The manufacturer reserves the right to make technical changes without notice in the interest of progress.

### Declaration

Our company will not be responsible for any mistakes in this manual. Prior notices will not be given in case of any amendments within the manual. The mentioned trademarks and names are owned by the corresponding companies.

Microsoft Windows Media and Windows Logo are registered trademarks in the US and/or other countries. WinAmp and WinAmp logo are registered trademarks of Nullsoft company. All other products are the trademarks or registered trademarks of their owners.

The player may lock up or temporarily lose its function due to electrostatic discharge or other electrical disturbance, but it resumes its normal function by resetting the device.

#### FCC Certification

This device complies with Part 15 of the FCC Rules. Operation is subject to the following two conditions: (1) this device may not cause harmful interference, and (2) this device must accept any interference received, including interference that may cause undesired operation.

NOTE: This equipment has been tested and found to comply with the limits for a Class B digital device, pursuant to Part 15 of the FCC Rules. These limits are designed to provide reasonable protection against harmful interference in a residential installation. This equipment generates, uses and can radiate radio frequency energy and, if not installed and used in accordance with the instructions, may cause harmful interference to radio communications. However, there is no guarantee that interference will not occur in a particular installation. If this equipment does cause harmful interference to radio or television reception, which can be determined by turning the equipment off and on, the user is encouraged to try to correct the interference by one or more of the following measures:

- Reorient or relocate the receiving antenna.
- Increase the separation between the equipment and receiver.
- Connect the equipment into an outlet on a circuit different from that to which the receiver is connected.
- Consult the dealer or an experienced radio/TV technician for help.

Shielded cables must be used with this unit to ensure compliance with the Class B FCC limits.

*Warning: Changes or modifications to this unit not expressly approved by the party responsible for compliance could void the user authority to operate the equipment.*