

# **ULTRA WIRELESS 2 - Wireless Over-Ear Headphones**

## **User Manual**

**Model:ULTRA WIRELESS 2**

**Brand:** 

**Manufacturer:AVC TECHNOLOGY (INTERNATIONAL) LTD**

**Address:6th Floor, Enterprise Square Three, 39 Wang Chiu Road, Kowloon Bay, Hong Kong, China**

**FCC ID: 2A84F-SU76**

**Welcome**

First of all, Thank You!

We hope you enjoy your purchase and being a part of our little community called **SOULNATION**.

Every SOUL product is designed with an emphasis on three key elements: **Power, Clarity, and Comfort**. We are committed to providing you the highest quality product with the latest technology and best value.

We'd love to hear your thoughts or see a picture or two on our social media.

Again, thank you for your support.

You are the reason why we can keep going!

— **SOUL** Team

Join #SOULNATION

Please follow us on our social media platforms for news and updates!



SOULELECTRONICS



SOUL ELECTRONICS



SOULELECTRONICS



SOUL ELECTRONICS

# Every SOUL has a story, tell us yours...

Every SOUL has a story.

The heart of every act - the reason why.

It propels every person.

The running, leaping, and dancing.

It's behind every entrepreneur, artist, musician,  
dancer, and athlete.

The striving, perseverance, and overcoming.

It gets you up early and keeps you up late.

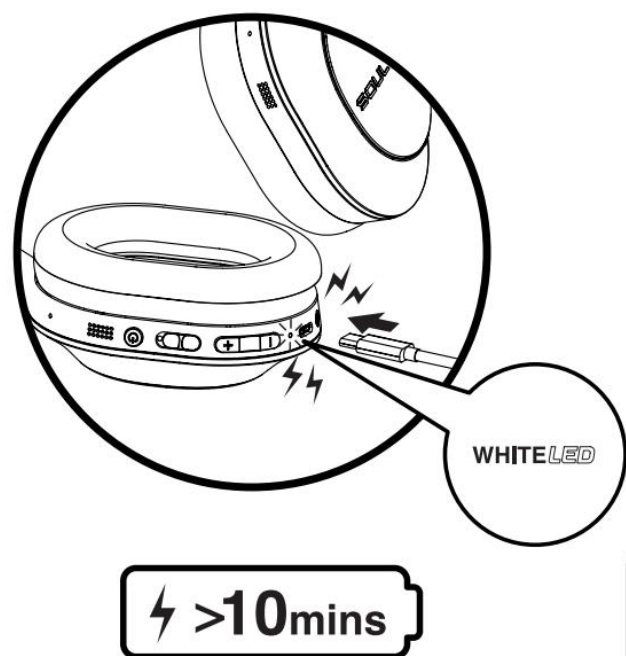
It's that voice in your head that says...

Keep Going

## GETTING STARTED

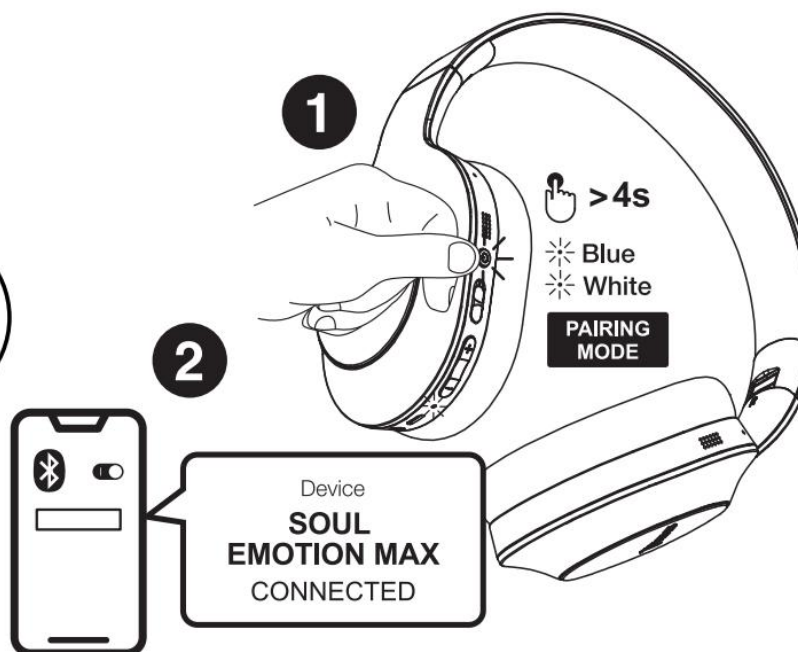
Commençons / Lass Uns Anfangen / Empecemos / 始めましょう /

의 시작하자 / 開始使用 / 开始使用 / Давайте начнем



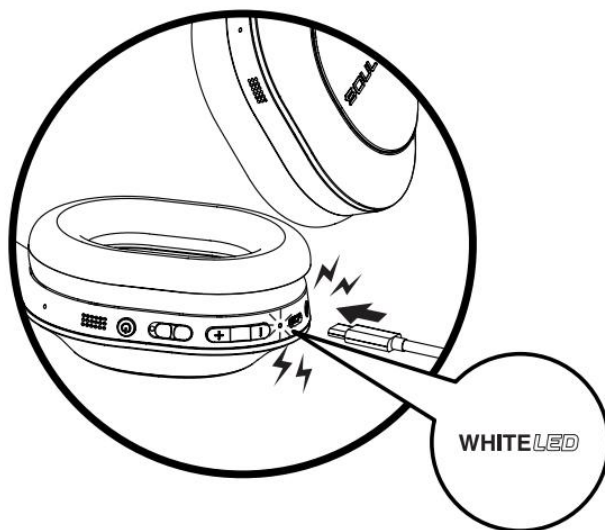
## AUTO PAIRING

Appairage Automatique / Automatisches Pairing /  
Emparejamiento Automático / オートペアリング / 오토페어링 /  
自動配對 / 自动配对 / АВТОМАТИЧЕСКОЕ СОПРЯЖЕНИЕ

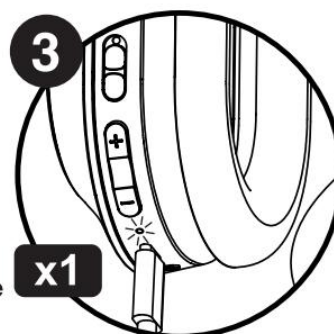
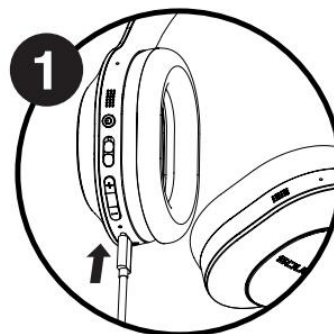
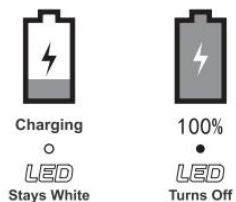


## CHARGING

Chargement / Aufladen / Modo De Carga / 充電 / 충전 / 充電 / 充电 / ЗАРЯДКА

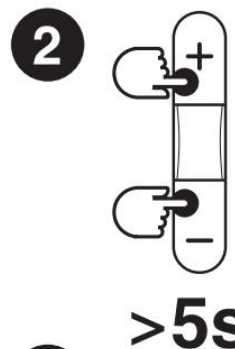


### BATTERY INDICATOR



## RESET

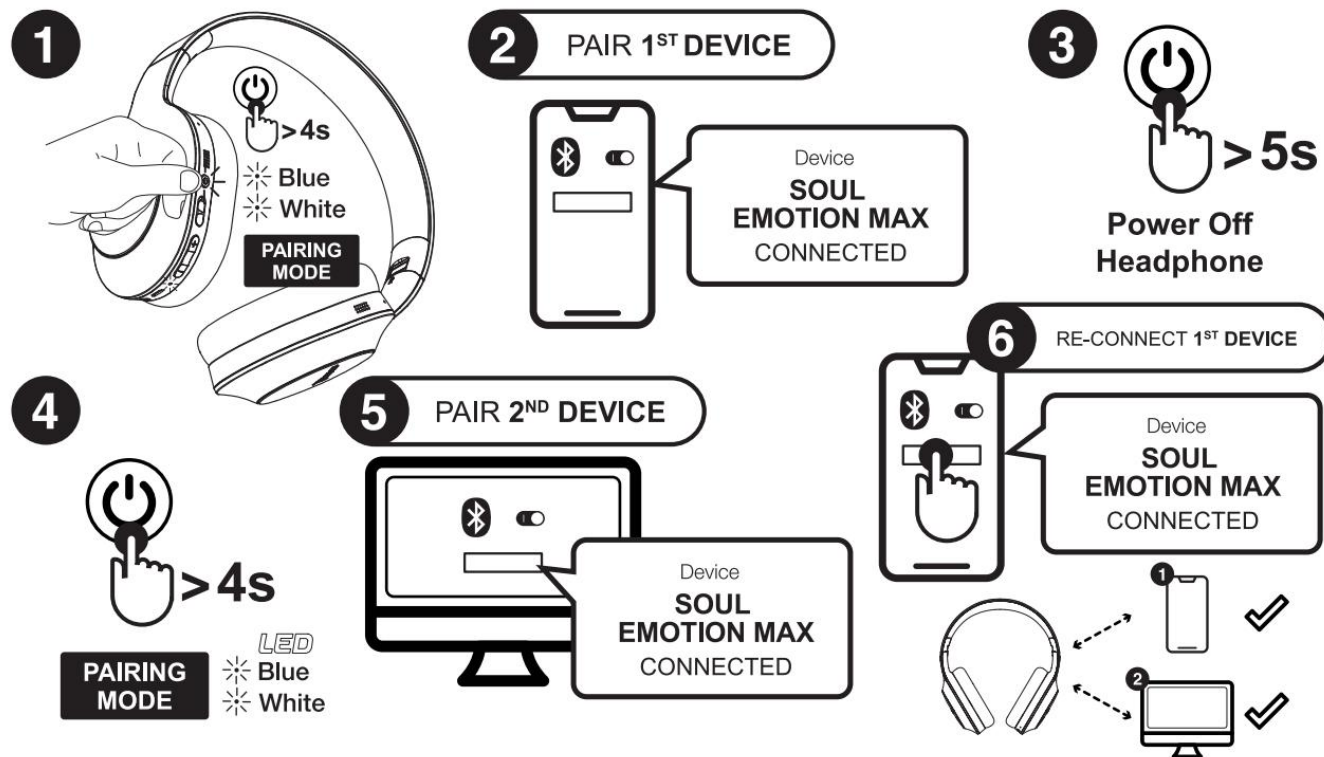
Réinitialiser / Reiniciar / Zurücksetzen /  
リセット / 재설정 / 重設 / 复位 / Сброс



## MULTIPOINT CONNECTION

Connexion Multipoint / Mehrpunktverbindung / Conexiones Multipunto / マルチポイント接続 / 다 지점 연결

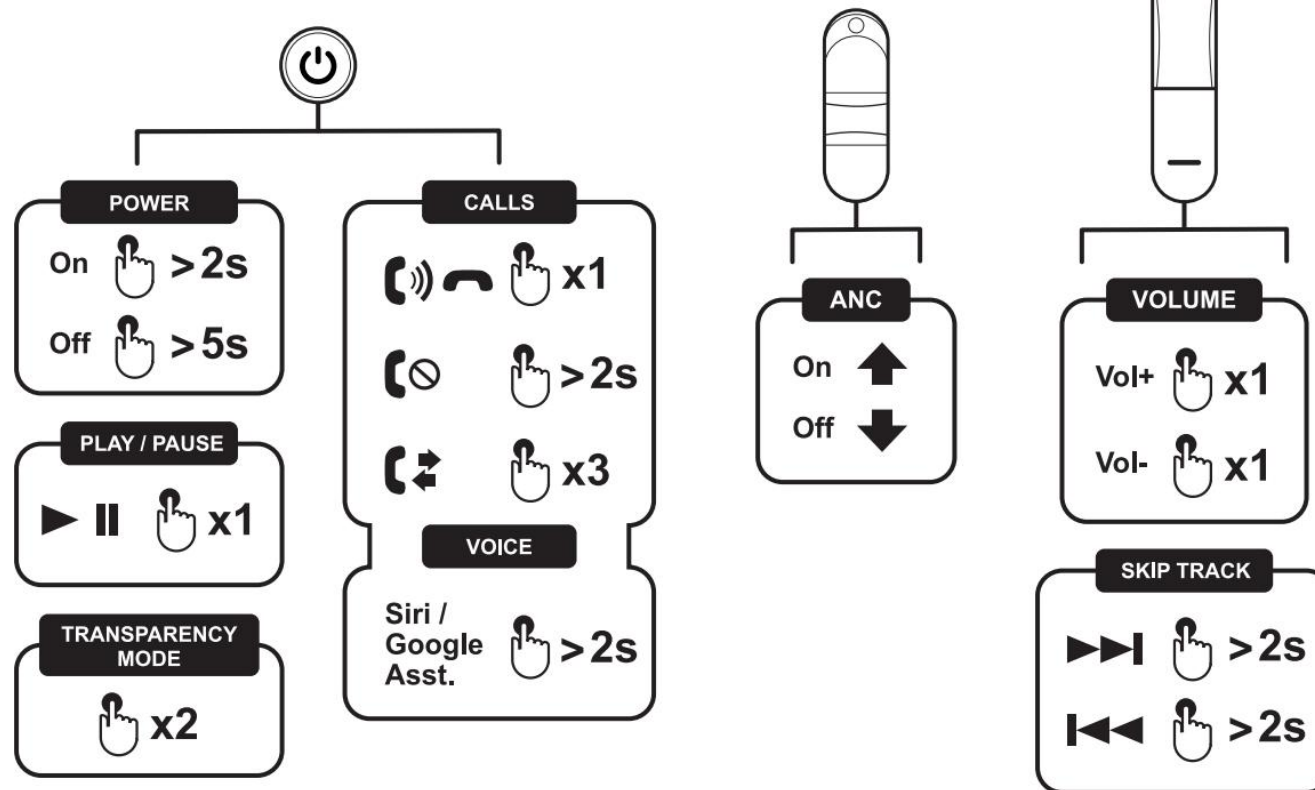
多點連接 / 多点连接 / Многоточечное Соединение



## MUSIC & CALLS

La musique / Musik / Música / 音楽 / 음악 / 音樂 / 音乐 / МУЗЫКА

Appel / Anruf / Llamada / コール / 통화 / 來電 / 来电 / ГАРНИТУРА



## **WARNING**

DO NOT use alcohol, paint thinners, detergent, shampoo, or other solvents for cleaning purposes.

DO NOT intentionally immerse the earphones under water.

DO NOT wash the earphones in washing machine.

DO NOT expose the product to extremely high or low temperatures.

DO NOT leave the product near candles, cooking burners and open flames.

DO NOT disassemble the product in any way to avoid electric shock.

Only charge the battery in accordance to the instructions provided by the company.

DO NOT wash the charging box.

## **CAUTION**

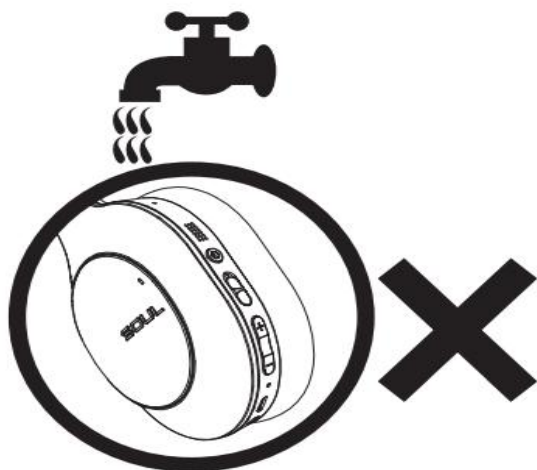
RISK OF EXPLOSION INCREASES IF BATTERY IS REPLACED BY AN INCORRECT TYPE.

DISPOSE USED BATTERIES ACCORDING TO THE INSTRUCTIONS.

## **INSTRUCTIONS**

DO NOT DISCARD THE USED BATTERIES ALONG WITH HOUSEHOLD WASTE.

DISPOSAL OF BATTERY SHOULD COMPLY WITH LOCAL ENVIRONMENTAL REGULATIONS.



**Bluetooth Version :V5.2**

**Profile : A2DP,AVRCP and HFP**

**Range : 10 meters (33 feet)**

**Charging time (Full charge) : Approx. 3 hour**

**Playtime : Up to 30 hours; ANC: Up to 20 hours(Varies by volume and content)**

**Standby time : Up to 15 daysDimensions68.7W x 191.2H x81.2D (mm)**

**Weight : 209g**

NOTE: This equipment has been tested and found to comply with the limits for a Class B digital device, pursuant to part 15 of the FCC Rules. These limits are designed to provide reasonable protection against harmful interference in a residential installation. This equipment generates uses and can radiate radio frequency energy and, if not installed and used in accordance with the instructions, may cause harmful interference to radio communications. However, there is no guarantee that interference will not occur in a particular installation. If this equipment does cause harmful interference to radio or television reception, which can be determined by turning the equipment off and on, the user is encouraged to try to correct the interference by one or more of the following measures:

- Reorient or relocate the receiving antenna.
- Increase the separation between the equipment and receiver.
- Connect the equipment into an outlet on a circuit different from that to which the receiver is connected.

-Consult the dealer or an experienced radio/TV technician for help

Changes or modifications not expressly approved by the party responsible for compliance could void the user's authority to operate the equipment.

This device complies with Part 15 of the FCC Rules. Operation is subject to the following two conditions:

- (1) this device may not cause harmful interference, and
- (2) this device must accept any interference received, including interference that may cause undesired operation.