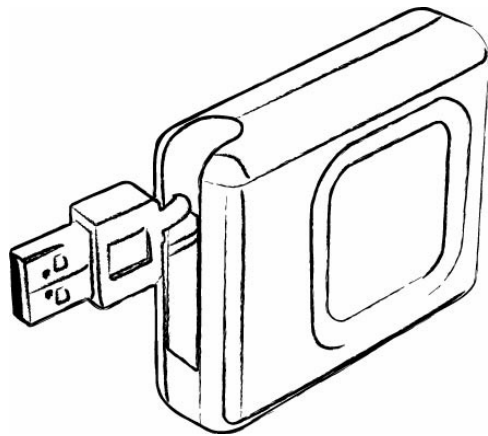

USB 2.0 Portable Hard Drive

User Manual

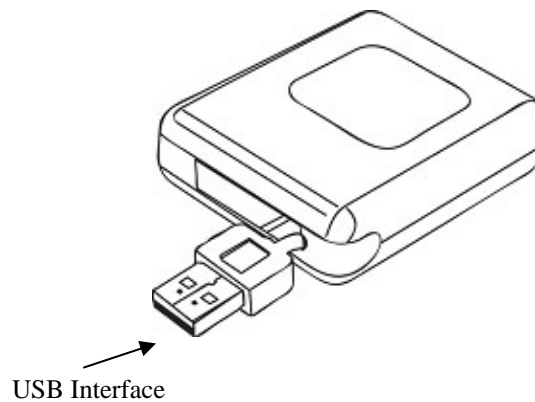


Version 1.0

Introduction

Thank you for purchasing our USB 2.0 Portable Hard Drive. This user guide will explain how to use the Portable Hard Drive. Please read this manual carefully before using this product.

Parts Description



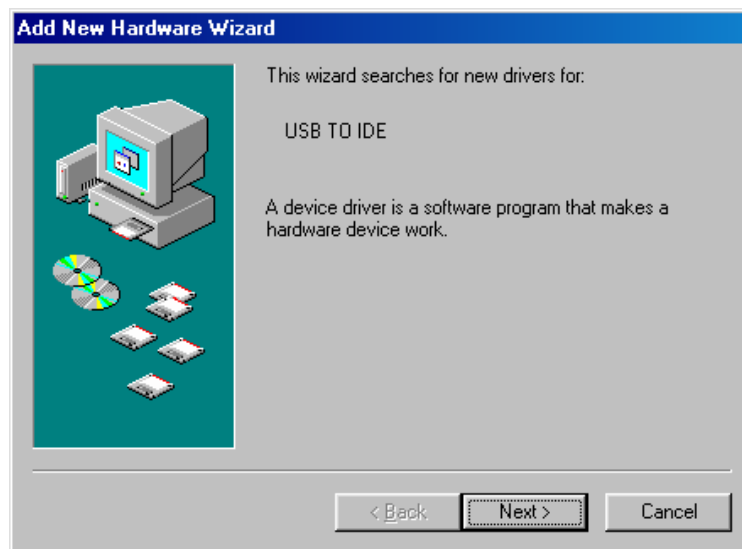
USB Interface: The USB connector connects to the USB port of your computer.

Driver Installation & Functions

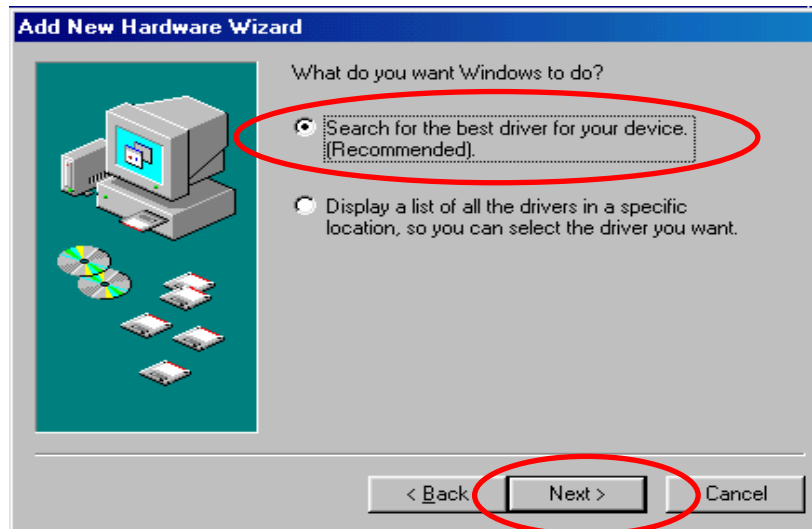
Install Driver (For Windows 98SE only)

Windows 98SE will not recognize the USB 2.0 Portable Hard Drive until you have installed the driver using the included installation CD-ROM. Follow the detailed instructions in this section to activate the USB mass storage function, so you will be able to transfer files from your computer to your Portable Hard Drive.

- a. Plug the Portable Hard Drive into an available USB port of your computer or notebook. Then insert the CD-ROM into the CD Drive. Windows 98SE will automatically detect the device. Click “Next” to continue.



- b. Click “Next” again without changing the setting.



c. Click on the “CD-ROM drive” box. If the path of the installation driver is stored in another destination, please specify the location. Then click “Next” to continue.



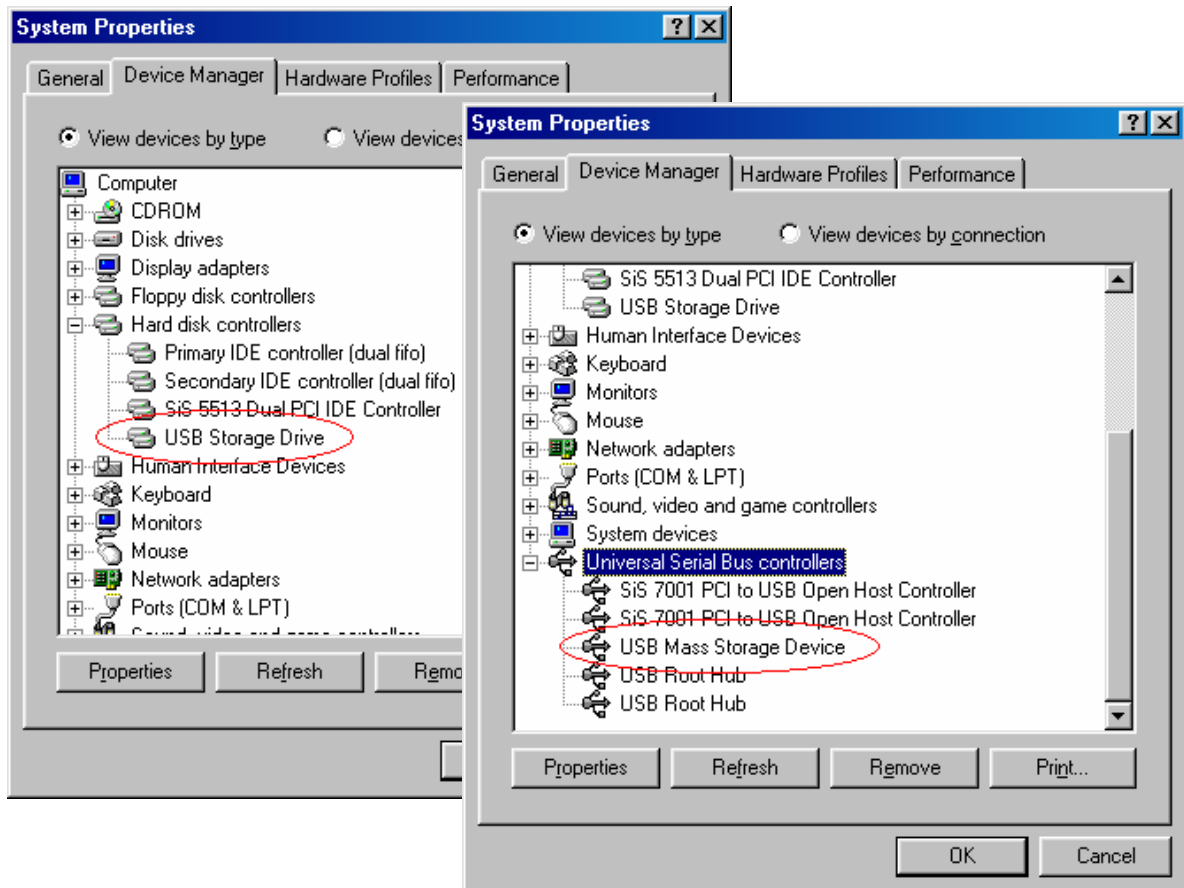
d. Windows will find the driver for the device from the path provided. Click “Next” to continue.



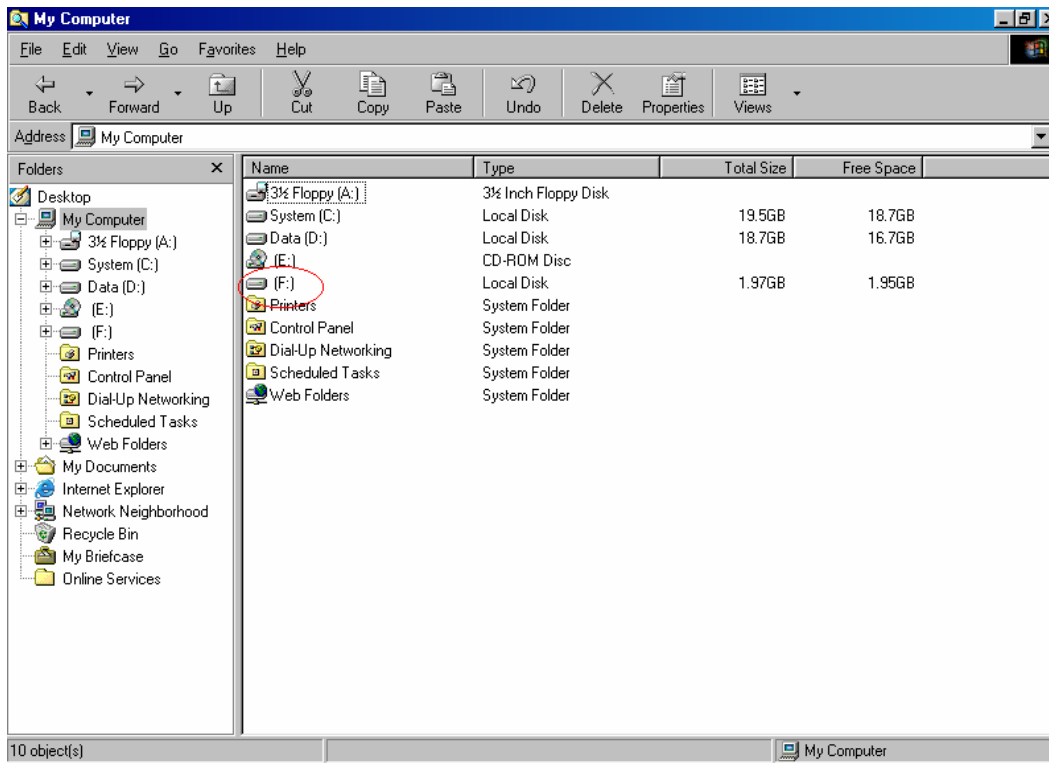
e. Once the installation is completed, click “Finish” to exit.



f. After installation completed, the “Storage Adaptor” will be added to the **Device Manager**.



g. The new hard drive will be added to **My Computer**.



Plug & Play (For Windows ME, 2000, XP and Mac OS9 or Higher)

These versions of the Windows or Mac operating systems will automatically detect your Portable Hard Drive after a connection with an available USB port is established.



When you plug the device into an available USB port in your computer or notebook, a “Local Disk” icon will be shown in My Computer.

Warning:

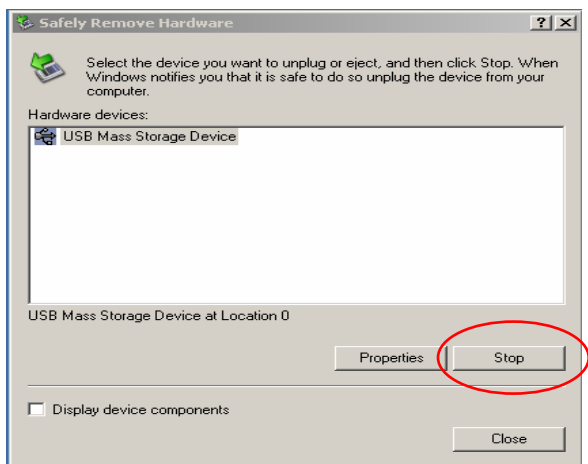
To unplug the Portable Hard Drive, you have to follow the “Safe Removal of Hardware” procedure:

Windows ME, 2000 and XP users:

a. Double click on the “Safely Remove Hardware” on the task bar.



b. A pop-up menu will appear. Select the “USB Mass Storage Device”, click on the “Stop” icon.



c. Click “OK” to confirm.



d. When the message “Safe to Remove Hardware” appears, you can safely remove the device.



Mac OS9 or higher users:

Drag the icon from the Portable Hard Drive to the trash icon.

Wait until the Portable Hard Drive icon disappears from the desktop.

Now you can disconnect the Portable Hard Drive from the USB port of your computer.

Files Operations

You may copy, read, write, save, or delete files from the Portable Hard Drive the same way you do it on your computer hard disk.

Copy File: Locate the files you wish to copy from the computer to your Portable Hard Drive. Drag and drop those files on the computer into the “Local Disk” folder. These files will now be copied to your Portable Hard Drive.

Read File: Locate the files on the Local Disk; double click on the file that you want to open.

Save File: When saving the file, choose “save as” and browse to the “Removable Disk.” Type the file name and click on “save”. The file will be saved into your Portable Hard Drive.

Delete File: Highlight the file from the Portable Hard Drive that you want to delete. Press the [Delete] key from the keyboard. Press “Yes” to confirm delete. The file will be deleted from the Portable Hard Drive.

Safety Precautions

Please read the safety precautions carefully before using the Portable Hard Drive (“the product”) and the application software. Follow the procedures in this guide when using this product. The following safety precautions are intended to remind you how to operate the product safely and correctly. Please read and ensure that you understand them.



Warnings

This device complies with Part 15 of the FCC Rules. Operation is subject to the following two conditions: (1) this device may not cause harmful interference, and (2) this device must accept any interference received, including interference that may cause undesired operation.

NOTE: This equipment has been tested and found to comply with the limits for a Class B digital device, pursuant to Part 15 of the FCC Rules. These limits are designed to provide reasonable protection against harmful interference in a residential installation. This equipment generates, uses and can radiate radio frequency energy and, if not installed and used in accordance with the instructions, may cause harmful interference to radio communications.

However, there is no guarantee that interference will not occur in a particular installation. If this equipment does cause harmful interference to radio or television reception, which can be determined by turning the equipment off and on, the user is encouraged to try to correct the interference by one or more of the following measures:

- Reorient or relocate the receiving antenna.
- Increase the separation between the equipment and receiver.
- Connect the equipment into an outlet on a circuit different from that to which the receiver is needed.
- Consult the dealer or an experienced radio/TV technician for help.
- Do not attempt to disassemble or alter any part of the product that is not described in this guide.
- Do not allow the product to come into contact with water or other liquids. In the event that water or other liquids enter the interior, immediately unplug the product from the computer. Continued use of the product may result in fire or electrical shock. Please consult your product distributor or the closest support center.
- Do not plug and unplug the product if your hands are wet. Otherwise it will cause electrical shock.
- Do not place the product near a heat source or expose them to direct flame or heat.
- Never place the product in an environment of strong electromagnetic fields. Exposure to strong magnetic fields may cause malfunctions or data corruption.

System Requirements

The following system requirements must be met to install and operate the product and the application software.

- Computer Model IBM PC/AT/Mac Compatible
- OS Windows 98 Second Edition, Windows Millennium Edition (Windows ME), Windows 2000, Windows XP and MAC OS9 or higher.
- Interface USB
 - Windows 98SE does not support the default Mass Storage Driver. You have to install the driver bundled with the product on the CD-ROM.
 - The product's basic functions are supported in the other Operating Systems listed above.
 - Warning: Do not format your Portable Hard Drive while using a Mac OS below 10.3.

Troubleshooting

1. Is the product connected to the computer correctly?

Please double check the connection of the USB plug with USB port of your computer.

Trademark Acknowledgment

- IBM is a registered trademark of international Business Machines Corporation.
- iBook and iMac are trademarks of Apple Computer, Inc.
- Macintosh, PowerBook, Power Macintosh are trademarks of Apple Computer, Inc.
- Microsoft Windows, Windows 98, Windows ME, Windows 2000, and Windows XP are either registered trademarks of Microsoft Corporation in the United States and/or other countries.
- Other names and products not mentioned above may be registered trademarks of their respective companies.

~~END~~



GARANTÍA LIMITADA POR 90 DÍAS

COMPUSA. GARANTIZA QUE ESTE PRODUCTO ESTARÁ LIBRE DE DEFECTOS DE MATERIALES Y FABRICACIÓN POR NOVENTA DÍAS.

SI SE ENCONTRARA UN DEFECTO DE ESTE TIPO DENTRO DE LAS LIMITACIONES DE ESTA GARANTÍA, **COMPUSA**. SE COMPROMETE, A SU ELECCIÓN, A REPARAR O REEMPLAZAR EL PRODUCTO CON UN ARTÍCULO IGUAL U OTRO DE IGUAL VALOR, LIBRE DE CARGO, AL COMPRADOR-CONSUMIDOR ORIGINAL.

DEVUELVA EL PRODUCTO A LA TIENDA DONDE LO ADQUIRIÓ. ESTA GARANTÍA NO ES VÁLIDA SI EL ARTÍCULO HA SIDO MODIFICADO, MAL USADO, FORZADO, SOMETIDO A CONDICIONES DE TRABAJO ANORMALES O TRANSFERIDO A OTRA PERSONA QUE NO SEA EL COMPRADOR-CONSUMIDOR ORIGINAL.

**COMPUSA INC.
DALLAS, TEXAS 75240**

Soporte Técnico

- Si tiene alguna pregunta, por favor póngase en contacto con nosotros via
E-mail: IT@FerrisMarketing.com
O llame a nuestra línea gratuita de ayuda al 1-866-611-2881
entre las 9:00 am y las 5 pm (Este)
Si necesita drivers visite fmi.compusa.com

COMPUSA
WHERE AMERICA BUYS TECHNOLOGY.

NINETY DAY LIMITED WARRANTY
COMPUSA WARRANTS THAT THIS PRODUCT IS FREE FROM ANY DEFECTS IN MATERIALS OR WORKMANSHIP FOR NINETY DAYS. IF SUCH A DEFECT IS DISCOVERED WITHIN THIS WARRANTY'S LIMITATIONS, **COMPUSA** AGREES AT ITS SOLE DISCRETION, TO REPAIR OR REPLACE WITH THE SAME ITEM OR ONE OF EQUAL VALUE, FREE OF CHARGE TO THE ORIGINAL CONSUMER PURCHASER. RETURN TO THE STORE WHERE PURCHASED.

THIS WARRANTY SHALL NOT APPLY IF THIS ITEM IS MODIFIED, MISUSED, TAMPERED WITH, SUBJECTED TO ABNORMAL WORKING CONDITIONS, OR TRANSFERRED TO SOMEONE OTHER THAN THE ORIGINAL CONSUMER PURCHASER.

COMPUSA INC.
DALLAS, TEXAS 75240

Technical Support

- Should you have any questions, please contact us via
Email: IT@FerrisMarketing.com
Toll free : 1-866-611-2881
For Drivers and on line support please visit us
on the web at fmi.compusa.com