

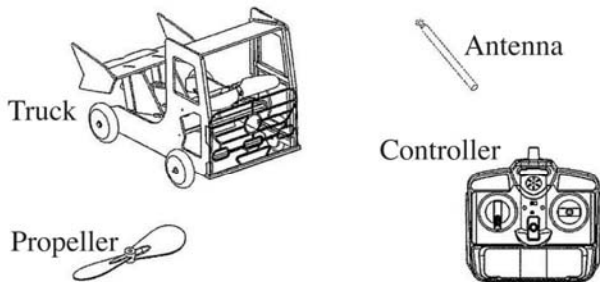
Flying Truck

User's Guide

Model No.:16880

Please read this guide thoroughly, noting all safety and care instructions. Keep this guide for reference.

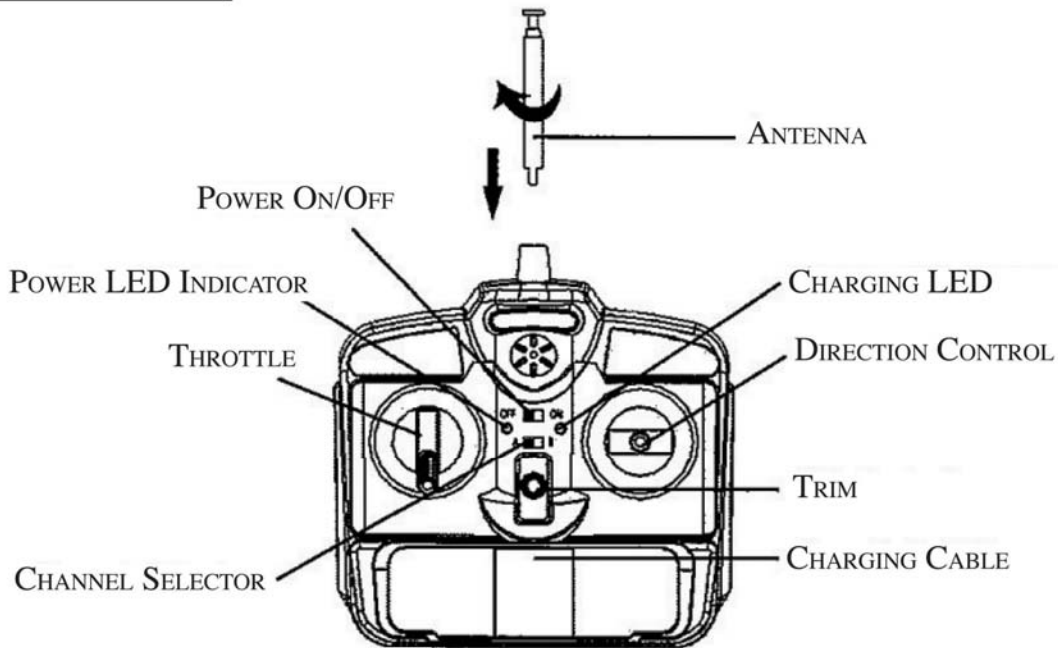
CONTENTS



! WARNING!
CHOKING HAZARD - Small parts.
Not suitable for children under 3 years.

Please use adult supervision when operating the Flying Truck.

CONTROLLER LAYOUT



BATTERY INSTALLATION

1. Remove the battery compartment cover by using a small Phillips screwdriver.
2. Insert 6 x AA alkaline batteries into the battery compartment making sure to match the polarity (+ and -) as shown on the diagram inside the compartment.
3. Replace the battery cover and screw in firmly.

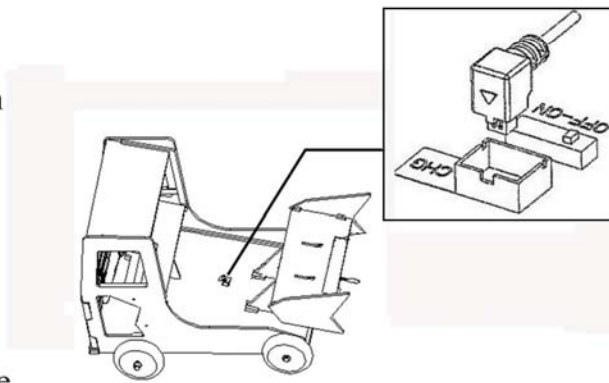


CHARGING THE FLYING TRUCK BATTERY

1. Slide down the charger cover to the open position on the front of the controller.

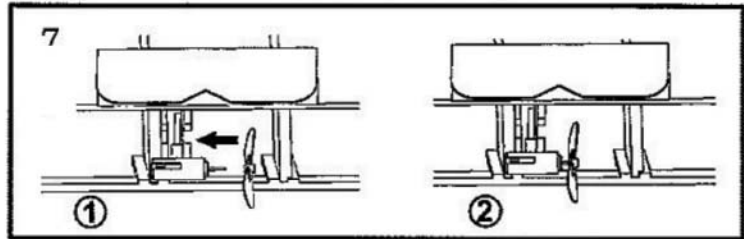
Note: Turn the *POWER* switch of the *Flying Truck* to the "OFF" before charging.

2. Connect the Charging Plug on the Controller to the socket into the Flying Truck.
3. Turn the controller *POWER* switch to the ON position. A green light will illuminate to indicate charging is in process. This indicator light will shut-off once charging is complete.



TAIL ROTOR INSTALLATION

Join the tail motor to the axle on the tail motor.



CONTROLLER ANTENNA

Screw the controller's antenna into the top of the controller (see Controller Layout on previous page).

OPERATING YOUR FLYING TRUCK

1. Turn the switch to the Flying Truck to the ON position. A red light will illuminate to indicate that it is ready.
2. Turn the *POWER* switch on the controller to the ON position. A red light will illuminate to indicate that it is on.
3. Put the Flying Truck on the ground, with plenty of room ahead then push up on the throttle and build up speed until the truck launches into the air.

CONTROLLING THE TRUCK

Throttle

Press up on the throttle to increase speed and ascend. Push down on the throttle to decrease speed and descend.

Turning

Push the *DIRECTIONAL STICK* to the right to turn right or to the left to turn left.

Trim

Use the *Trim* control to align the truck's steering. The vehicle should drive straight when no direction is pressed.

INTERFERENCE

Some radio frequencies or other R/C units nearby can cause interference and poor performance. When this happens, try to move away from the source of the interference.

CHANNEL SELECTOR

Flying Truck may be controlled by one of two frequencies. Use opposite frequencies when close to another Flying Truck.

CARE & HANDLING

- Do not submerge into water or other liquids.
- Do not disassemble the product for any reason.
- Do not expose to extreme temperatures.
- Do not drop, throw, smash or otherwise cause physical shock.
- Clean using only a slightly damp cloth.
- Do not use cleaners with chemical agents.

BATTERY INFORMATION

- Do not short-circuit the battery terminals.
- Non-Rechargeable batteries are not to be charged.
- Do not mix old and new batteries.
- Remove exhausted batteries.
- Batteries should be installed and replaced by an adult only.
- Remove batteries when not in use.
- Do not mix alkaline, standard (carbon-zinc) or rechargeable (nickel-cadmium) batteries.

SAFETY WARNINGS

- Keep hands, hair, face and loose clothing away from the propeller when power is turned on.
- Turn off the controller and truck when not in use.
- Do not fly the truck over a person's head.
- Do not use the controller to charge batteries other than the one built into the Flying Truck.

SPECIAL BATTERY INFORMATION

Controller

Power: DC

Requires: 6 x AA 1.5V

Truck

Power: DC

Requires: 1 x 3.7V rechargeable battery (built in)

Warning: Changes or modifications to this unit not expressly approved by the party responsible for compliance could void the user's authority to operate the equipment.

This device complies with Part 15 of the FCC Rules. Operation is subject to the following two conditions: (1) this device may not cause harmful interference, and (2) this device must accept any interference received, including interference that may cause undesired operation.

NOTE: This equipment has been tested and found to comply with the limits for a Class B digital device, pursuant to Part 15 of the FCC Rules. These limits are designed to provide reasonable protection against harmful interference in a residential installation. This equipment generates, uses and can radiate radio frequency energy and, if not installed and used in accordance with the instructions, may cause harmful interference to radio communications. However, there is no guarantee that interference will not occur in a particular installation. If this equipment does cause harmful interference to radio or television reception, which can be determined by turning the equipment off and on, the user is encouraged to try to correct the interference by one or more of the following measures.

- Reorient or relocate the receiving antenna.
- Increase the separation between the equipment and receiver.
- Connect the equipment into an outlet on a circuit different from that to which the receiver is connected.
- Consult the dealer or an experienced radio/TV technician for help.

INDUSTRY CANADA

The carrier frequency is 27.145MHZ

The RF output power is 59.6dbuV/m at 3m

This device complies with the limits of standard RSS-310 issue 2.

Operation is subject to the following two conditions: (1) this device may not cause interference, and (2) this device must accept any interference, including interference that may cause undesired operation of the device."

This Category II radiocommunication device complies with IndustryCanadaStandard RSS-310.

Ce dispositif de radiocommunication de catégorie II respecte la norme CNR-310 d'industrieCanada.