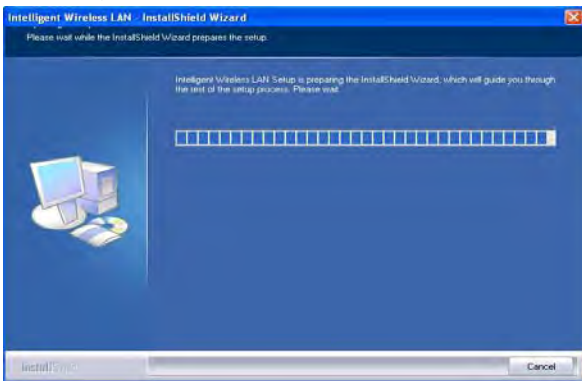


Windows XP Installation

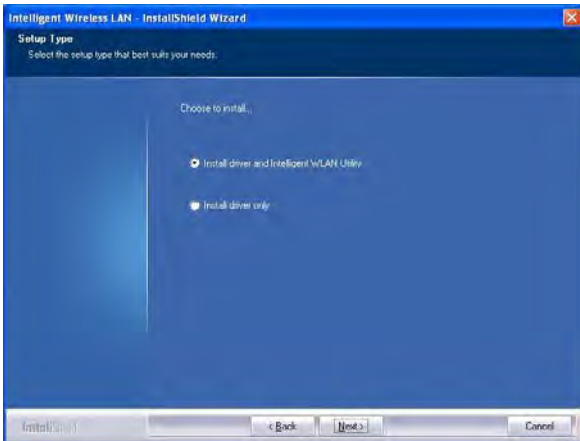
1 Click **Intelligent** to install the utility.



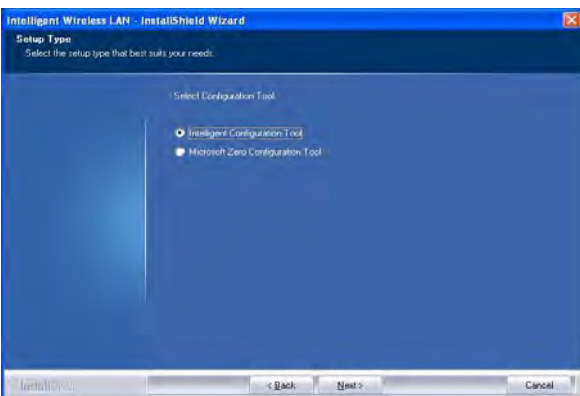
2 Waiting while the installation procedure.



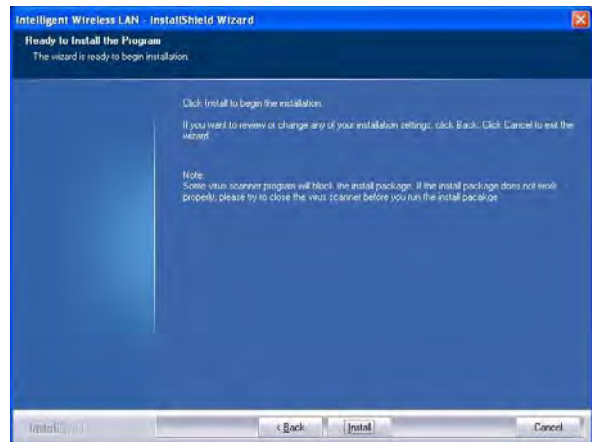
3 Select **Install driver and Intelligent WLAN Utility** then click **Next** to continue.



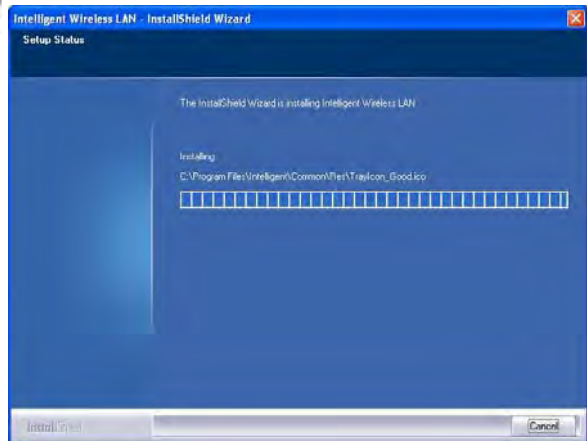
4 Click **Intelligent Configuration Tool** and click **Next** to continue.



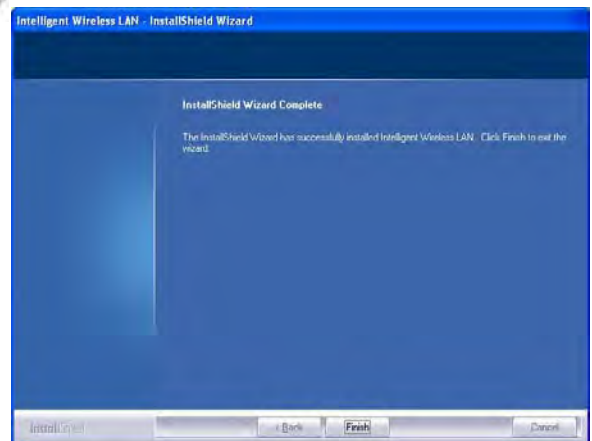
5 Click **Install** to begin the installation.



6 Please waiting while installation procedure.



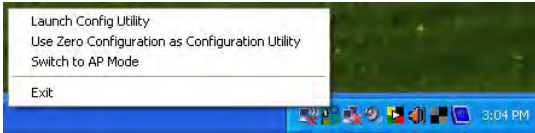
7 Click **Finish** to finish the set up procedure.



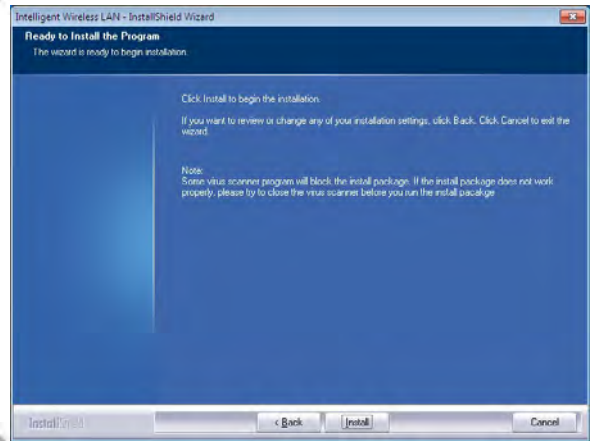
8 Insert your wireless adapter into the USB port of your device. The system will detect the adapter automatically.



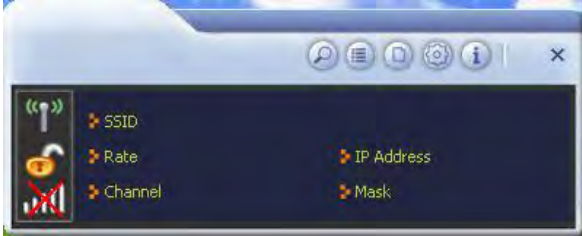
9 Right click on the icon and select “**Launch Config Utility**” to activate the tool.



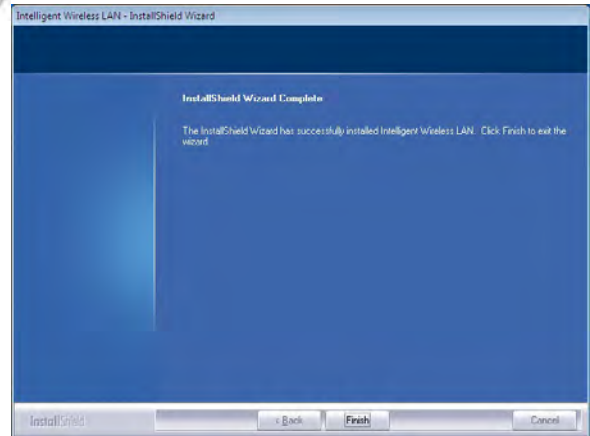
4 Click **Install** to begin the installation..



10 The configuration Tool



5 Click **Finish** to finish the set up procedure.

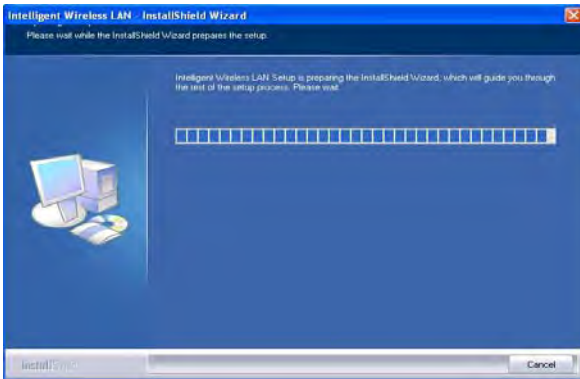


Windows VISTA/WIN7 Installation

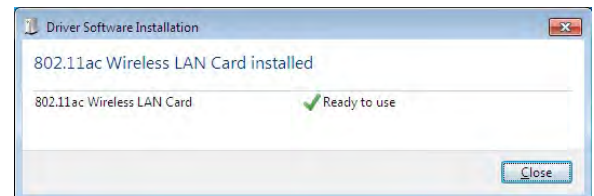
1 Click **Intelligent** to install the utility.



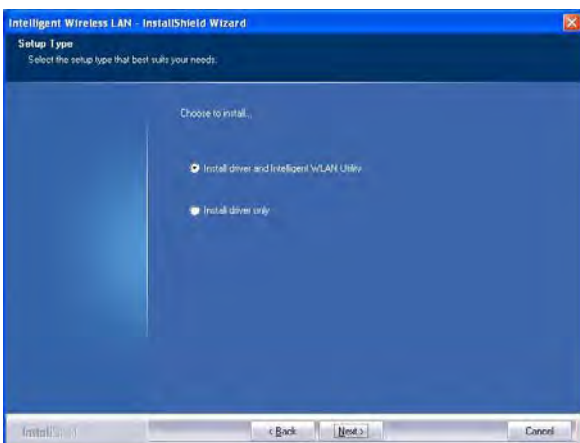
2 Waiting while the installation procedure.



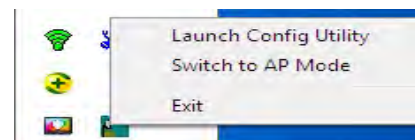
6 Insert your wireless adapter into the USB port of your device. The system will detect the adapter automatically.



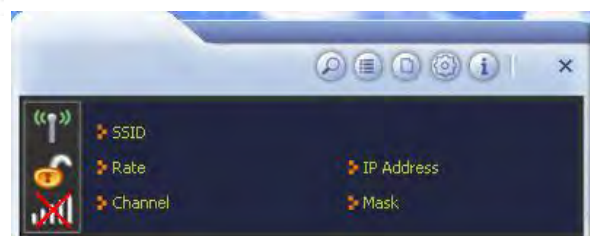
3 Select **Install driver and Intelligent WLAN Utility** then click **Next** to continue.



7 Right click on the icon and select “**Launch Config Utility**” to activate the tool.



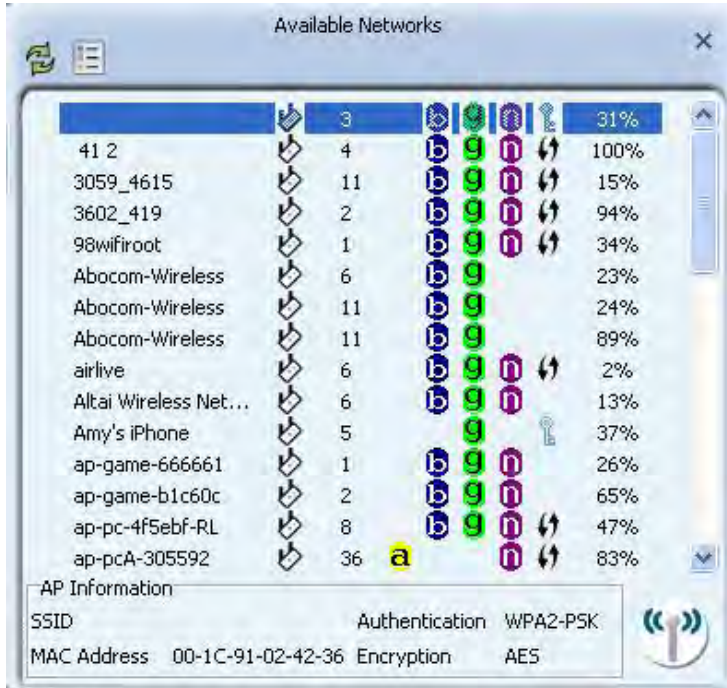
8 The configuration Tool



Configuration Tool

Available Network Tab

The Network page displays the information of surrounding APs from last scan result. The tab lists the information including SSID, Network type, Channel, Wireless mode, Encryption and Signal.



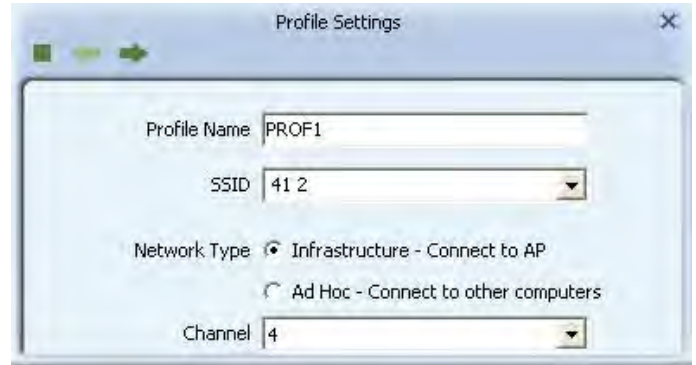
Profile List

Profile can book keeping your favorite wireless setting among your home, office, and other public hot spot. You may have multiple profiles, and activate the correct one at your preference.



Profile Settings

Use this feature to create a profile for your prefer wireless network. The tab list the information including SSID, Network type, Channel, Wireless mode and security type.



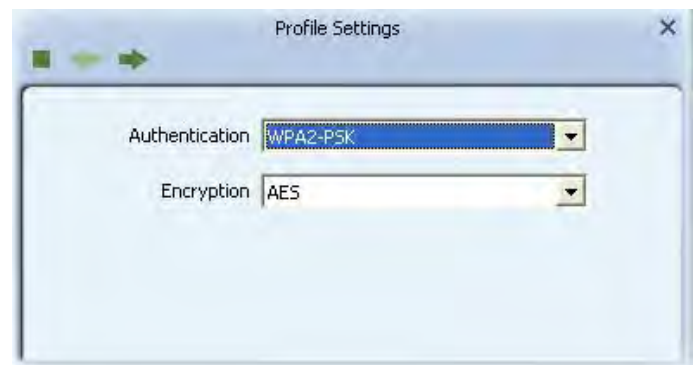
Wi-Fi Protected Setup

The primary goal of Wi-Fi Protected Setup (Wi-Fi Simple Configuration) is to simplify the security setup and management of Wi-Fi NETWORKS. The STAs as an Enrollee or external Registrar supports the configuration setup using PIN (Personal Identification Number) configuration or PBC (Push Button Configuration) method through an internal or external Registrar.



Security Type

You can set up also open the Configuration by double clicking the icon or right clicking to select **Open Config Utility**.



Advanced Tab

The Advance page can setup wireless mode, region code and advanced wireless authentication type.

For 2.4G: Only Select Channel 1~Channel 11.

For 5G: Only Select Channel 149, 153, 157, 161, 165 & Channel 36, 40, 44, 48.



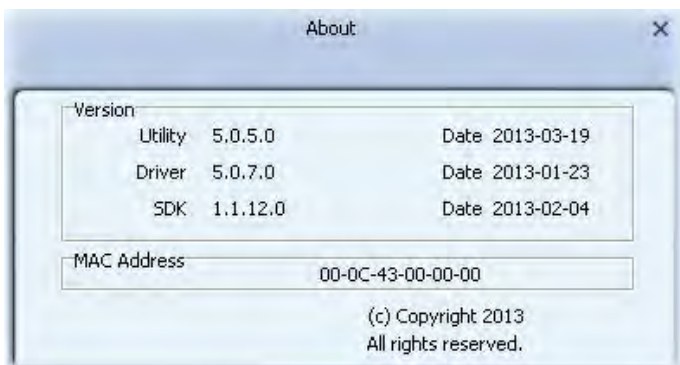
Link Information

This page displays the information of the current connection status.



Driver Information

This page displays the information of the wireless card including, Manufacture, Utility driver version, SDK version, MAC Address and copyright information.



Product Specifications:

Dimensions: 17.2 (W) X 18.1 (H) X 187.2 (D)

Frequency range: Europe: 2.400 ~ 2.483GHz,
5150 ~ 5250 GHz.

Channels support: 802.11bgn+ac

Host interface: USB 2.0

Operation temperature: 0 ~ 40° C

Power rating: DC 5V 500mA

FCC Statement:

Federal Communication Commission Interference Statement

This equipment has been tested and found to comply with the limits for a Class B digital device, pursuant to Part 15 of the FCC Rules. These limits are designed to provide reasonable protection against harmful interference in a residential installation. This equipment generates, uses and can radiate radio frequency energy and, if not installed and used in accordance with the instructions, may cause harmful interference to radio communications. However, there is no guarantee that interference will not occur in a particular installation. If this equipment does cause harmful interference to radio or television reception, which can be determined by turning the equipment off and on, the user is encouraged to try to correct the interference by one of the following measures:

- Reorient or relocate the receiving antenna.
- Increase the separation between the equipment and receiver.
- Connect the equipment into an outlet on a circuit different from that to which the receiver is connected.
- Consult the dealer or an experienced radio/TV technician for help.

FCC Caution: Any changes or modifications not expressly approved by the party responsible for compliance could void the user's authority to operate this equipment.

This device complies with Part 15 of the FCC Rules. Operation is subject to the following two conditions: (1) This device may not cause harmful interference, and (2) this device must accept any interference received, including interference that may cause undesired operation.

For product available in the USA/Canada market, only channel 1~11 can be operated. Selection of other channels is not possible.

This device is going to be operated in 5.15~5.25GHz frequency range, it is restricted in indoor environment only.

IMPORTANT NOTE:

Federal Communication Commission (FCC) Radiation Exposure Statement

This EUT is compliant with SAR for general population/uncontrolled exposure limits in ANSI/IEEE C95.1-1999 and has been tested in accordance with the measurement methods and procedures specified in OET Bulletin 65 Supplement C.