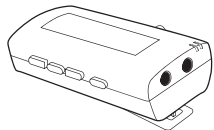
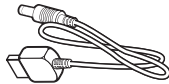


## 1—Check the package contents

Unpack the Bluetooth Stereo Receiver and check that the following items are included:



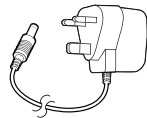
Bluetooth Stereo Receiver



USB Cable



Quick Guide



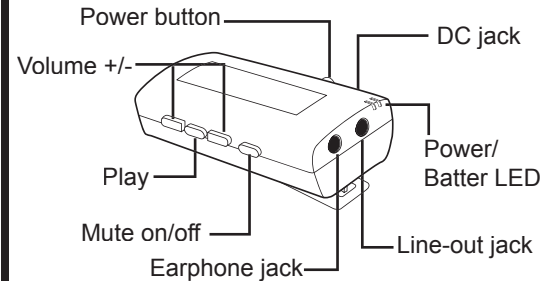
Power Adapter



## 3—Turn on the power

**To turn on the power**, press and hold the power until the power LED lights blue.

**To turn off the power**, press and hold the power button until the power LED turns off.



**Blue LED** power is on

**Blue flashing LED** connected to device

**Red LED** battery is charging, turns off when charged

**Red flashing LED** battery is low, recharge before LED turns off



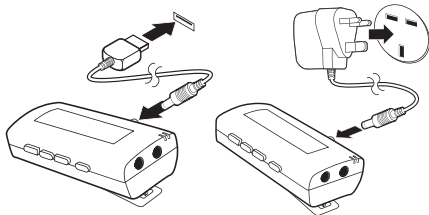
## 2—Charge the battery

The battery lasts eight hours and is recharged using the power adapter or the USB cable. To recharge:

**Plug the USB cable** into the DC jack on the Bluetooth Stereo Receiver and connect the other end to your PC.

*or*

**Plug the power adapter** into the DC jack on the Bluetooth Stereo Receiver and connect the other end to an electrical outlet.



Recharging takes 90 minutes.



## 4—Pair (make connection) with receiver

The Bluetooth Stereo Receiver can be used with a bluetooth transmitter or Bluetooth Audio Dongle. On first use, the devices must be paired.

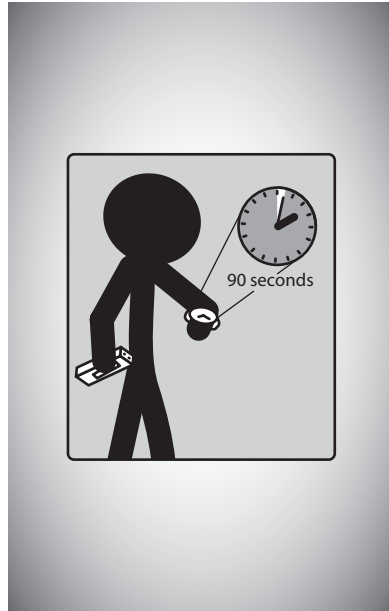
To pair the devices.

1. Connect your receiver to an audio device.
2. Turn on the power on your Bluetooth Stereo Receiver.
3. Turn on the power on the transmitter.



## 5—Wait for devices to connect

The devices connect (pair) after 90 seconds.



## 7—Troubleshooting

If the Bluetooth Stereo Receiver does not work, try the following:

- Ensure connecting devices are charged
- Turn off all devices and then turn them on in the order shown in this guide
- Ensure devices are within the 10-meter range



## 6—Using with your mobile phone

The Bluetooth Stereo Receiver can be used with a Bluetooth enabled mobile phone.

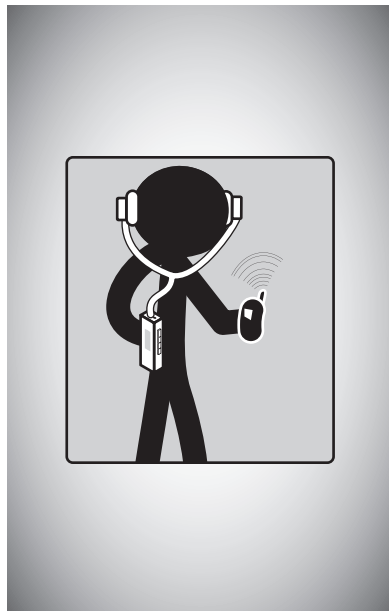
### To pair with your phone

1. Enable Bluetooth on your phone (refer to the phone's user manual).
2. Turn on the Stereo Receiver.
3. In the phone's Bluetooth menu, search for devices.
4. Select **Stereo Receiver**.
5. Enter the PIN code "0000".

### Answering calls

To **answer a call**, push the play button.

To **end a call**, push the power button.



## 8—Specifications

Standards	Bluetooth specification V1.2 compliant. Bluetooth A2DP profile (AV Profile) Bluetooth AVRCP profile Headset and Hand free
Tx Power	0.25 ~ 2.5mW (Bluetooth Power Class II)
Rx Sensitivity	< -80dBm (BER 0.1%)
Distance	> 10m (open space)
Audio Streaming Format	SBC 48.000 kHz
Audio Frequency Range	20Hz ~ 22 kHz
Audio S/N	> 85dB
Audio THD	< -83dB
Audio Output Power	> 20mWrms
Power supply	Supply by integrated rechargeable battery cell. Music plays : > 8 hrs.
Physical Specification:	Dimension: 65.5 mm x 35 mm x 22.5 mm
Environmental Range:	Operating temperature:-10 ~ +50 degrees centigrade Humidity: Relative humidity 0 ~ 95%

Serial number & Firmware version:

### **Federal Communication Commission Interference Statement**

This equipment has been tested and found to comply with the limits for a Class B digital device, pursuant to Part 15 of the FCC Rules. These limits are designed to provide reasonable protection against harmful interference in a residential installation. This equipment generates, uses and can radiate radio frequency energy and, if not installed and used in accordance with the instructions, may cause harmful interference to radio communications. However, there is no guarantee that interference will not occur in a particular installation. If this equipment does cause harmful interference to radio or television reception, which can be determined by turning the equipment off and on, the user is encouraged to try to correct the interference by one of the following measures:

- Reorient or relocate the receiving antenna.
- Increase the separation between the equipment and receiver.
- Connect the equipment into an outlet on a circuit different from that to which the receiver is connected.
- Consult the dealer or an experienced radio/TV technician for help.

This device complies with Part 15 of the FCC Rules. Operation is subject to the following two conditions: (1) This device may not cause harmful interference, and (2) this device must accept any interference received, including interference that may cause undesired operation.

FCC Caution: Any changes or modifications not expressly approved by the party responsible for compliance could void the user's authority to operate this equipment.

#### **IMPORTANT NOTE:**

##### **FCC Radiation Exposure Statement:**

This equipment complies with FCC radiation exposure limits set forth for an uncontrolled environment. End users must follow the specific operating instructions for satisfying RF exposure compliance.

This transmitter must not be co-located or operating in conjunction with any other antenna or transmitter.