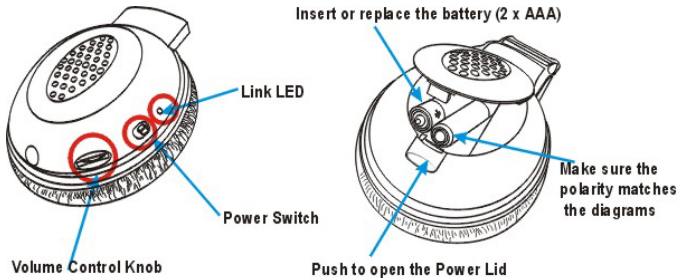


# Foldable Bluetooth Stereo Headset

# User Guide

## 1

### Outlook and Parts Names



## 3

### Trouble Shooting

If you cannot hear music played from your computer, please do the followings.

1. Make sure the power LED on the headphone glows. If not, replace the battery with new ones.
2. Make sure the Link LED flashes. If not, it means your Bluetooth Stereo Headset is NOT connected to the Bluetooth adapter as it should be. In this case, unplug your Bluetooth adapter. Power off your Bluetooth Stereo Headset. Repeat the installation steps ① ② .
3. For **Windows 2000**: Go to **Start → Control Panel → Sounds and Multimedia → Audio**. Make sure that **Bluetooth Audio** is selected for the Preferred device of Sound Playback.

For **Windows XP**: Go to **Start → Control Panel → Sound, speech, and Audio Devices → Sound and Audio Devices**. Make sure that **Zeevo Audio Dongle** is selected for the Default device of Sound playback.

## 2

### Installation

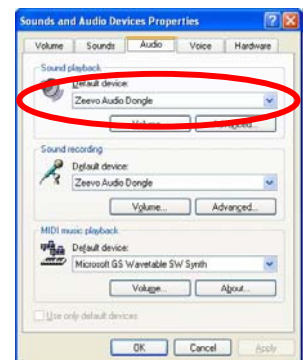
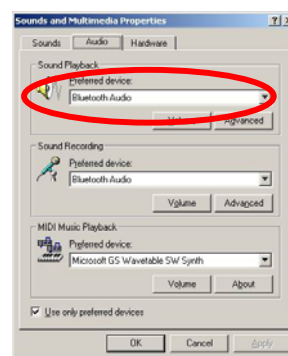
- ① Plug the optional **Bluetooth USB Audio Adapter** to a free USB port on your computer.



**Note:**

1. *The optional **Bluetooth 2000 and XP**.  
With the optional **Bluetooth USB Audio Adapter**, this headset is designed to work out of box without configuration. If you are using other Bluetooth adapter, you may need to manually configure the Bluetooth Stereo Headset. Refer to your Bluetooth adapter's user manual for details regarding the driver installation.*

- ② Turn on your Bluetooth Stereo Headset and wear it. You can now enjoy music from your computer.



### **Federal Communication Commission Interference Statement**

This equipment has been tested and found to comply with the limits for a Class B digital device, pursuant to Part 15 of the FCC Rules. These limits are designed to provide reasonable protection against harmful interference in a residential installation. This equipment generates, uses and can radiate radio frequency energy and, if not installed and used in accordance with the instructions, may cause harmful interference to radio communications. However, there is no guarantee that interference will not occur in a particular installation. If this equipment does cause harmful interference to radio or television reception, which can be determined by turning the equipment off and on, the user is encouraged to try to correct the interference by one of the following measures:

- Reorient or relocate the receiving antenna.
- Increase the separation between the equipment and receiver.
- Connect the equipment into an outlet on a circuit different from that to which the receiver is connected.
- Consult the dealer or an experienced radio/TV technician for help.

This device complies with Part 15 of the FCC Rules. Operation is subject to the following two conditions: (1) This device may not cause harmful interference, and (2) this device must accept any interference received, including interference that may cause undesired operation.

FCC Caution: Any changes or modifications not expressly approved by the party responsible for compliance could void the user's authority to operate this equipment.

### **IMPORTANT NOTE:**

#### **FCC Radiation Exposure Statement:**

This equipment complies with FCC radiation exposure limits set forth for an uncontrolled environment. End users must follow the specific operating instructions for satisfying RF exposure compliance.

This transmitter must not be co-located or operating in conjunction with any other antenna or transmitter.