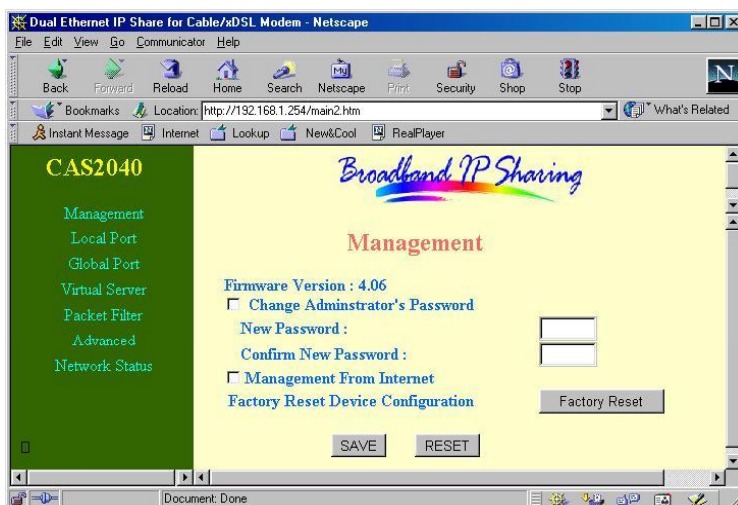


Management from Internet: Checking this item lets you manage this device remotely from outside of the network through Telnet or Web Configuration.

Note: to reduce the risk of hacker attack, it is better to leave this box unchecked.

Factory Reset Device Configuration: Click **Factory Reset** and all current settings on the device will be reset to the default values.

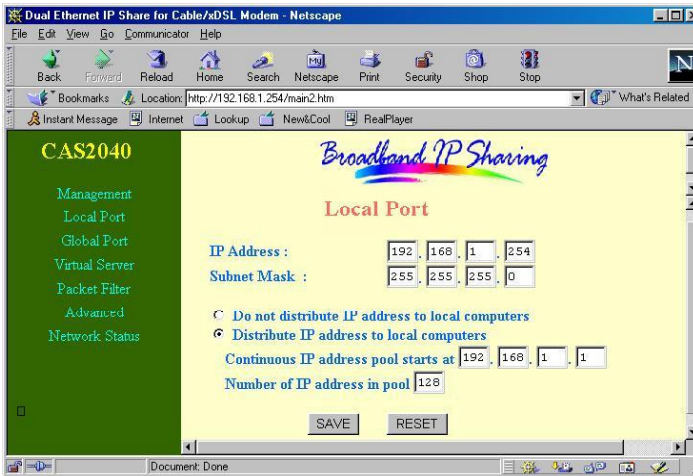


SAVE: After completing the settings on this page, click “SAVE” to save the settings.

RESET: Click “RESET” to clear all the settings on this page.

Local Port

This screen contains settings for LAN interface attached to the local network.



IP Address

- Default: 192.168.1.254

SubNetmask

- Default: 255.255.255.0

Do not distribute IP address to local computers⁵

Checking this radio button to disable this IP Sharing device to distribute IP Addresses (DHCP disabled).

Distribute IP addresses to local computers

Checking this radio button to enable this IP Sharing device to distribute IP Addresses (DHCP enabled). And the following field will be activated for you to enter the starting IP Address:

Continuous IP address pool starts at

The starting address of this local IP network address pool. The pool is a piece of continuous IP address segment. Keep the default value 192.168.1.1 should work for most cases.

Number of IP address in pool

- Maximum: **128**. Default value 128 should work for most cases.

Note: If “Continuous IP address poll starts” is set at 192.168.1.1 and the “Number of IP address in pool” is 128, the device will distribute IP addresses from 192.168.1.1 to 192.168.1.128 to all the computers in the network that request IP addresses from DHCP server (IP Sharing Device).

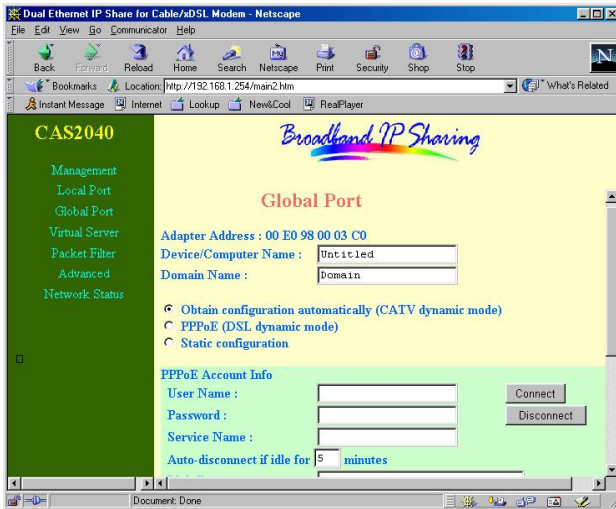
⁵ If you check this selection, remember you have to specify a static IP address for all your local computers.

SAVE: After completing the settings on this page, click “SAVE” to save the settings.

RESET: Click “RESET” to clear all the settings on this page.

Global Port

This screen contains settings for the Global (Internet connection) interface.



Adapter Address: Read-only. It is necessary for some ISP to identify this device by its MAC address.

Device/Computer Name: Enter a descriptive name for identification purpose. Some Internet Service Providers (ISP) requires this information and if that is the case, they will provide you with the name. The Maximum input for this field is **20** alphanumeric characters and it is case sensitive.

Domain Name: For example: *yourcompany.com*. The maximum input for this field is 32 alphanumeric characters and it is case insensitive.

Note: Your ISP may ask you to input a certain domain name. Domain name is also required for internal network’s email and news functions.

Ⓞ Obtain configuration automatically (CATV dynamic mode): For Cable Modem Internet service.

Ⓞ PPPoE (DSL dynamic mode): For xDSL Internet service that runs PPPoE. If your xDSL service uses PPPoE, after installing the IP Sharing device, please do not run PPPoE software on your computers.

Ⓞ **Static configuration:** Check this button when the ISP assigns static IP address for your account.

PPPoE Account Info (enter information provided by ISP when PPPoE is selected)

Username:

- Maximum input is 52 alphanumeric characters (case sensitive).

Password:

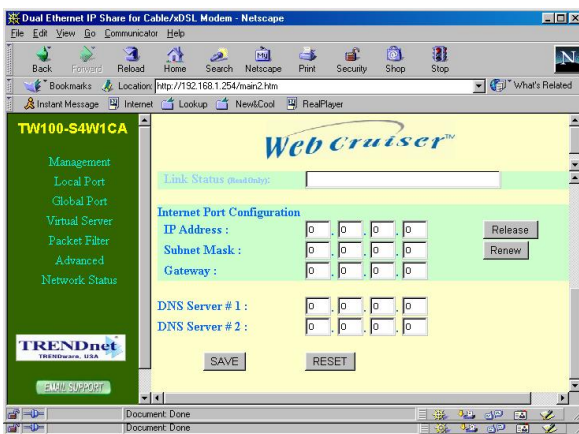
- Maximum input is 36 alphanumeric characters (case sensitive).

Service Name: For identification purpose. If it is required, your ISP will provide you the information.

Auto-disconnect: This device can be configured to auto-disconnect when there is no activity on the line for a predetermined period of time.

- Default: **5** minutes. You can input any number from 0 to 65535.
- To keep the line always connected, please set the number to **0**.

Link Status (Read-Only): Displays the current PPPoE link status (for PPPoE only). It shows either “PPPoE connected” or “PPPoE disconnected”.



Internet Port Configuration: For **CATV dynamic mode** or **PPPoE (DSL dynamic mode)**, user can get new settings by pressing the **Release** and then the **Renew** button. For **Static configuration**, however, these two buttons are grayed out since user will enter these addresses by using information provided by the ISP.

IP address: Enter the information provided by your ISP in case of Static configuration.

Subnet Mask: Enter the information provided by your ISP in case of Static configuration.

Gateway: Enter the information provided by your ISP in case of Static configuration.

DNS server #1: /DNS server #2:

When the Internet Station is setup to “**Obtain global port configuration automatically**” and it is connected to the ISP, it will obtain these two addresses from ISP automatically. You can change the values according to ISP’s instruction.

SAVE: After completing the settings on this page, click “SAVE” to save the settings.

RESET: Click “RESET” to clear all the settings on this page.

Virtual Server

ADD Server

Single Port/Port Range: For selecting between a specific port and a range of ports which you want the Internet users to be able to access. The valid port number ranges from 0 to 65535.

Port Type: please select the port type (TCP or UDP) for the port number that was entered earlier.

Local Server IP Address: Enter the Local Server’s IP address (for the specified port entered above).

ADD: Click “ADD” to add the local server in the Server List.

Note: Maximum 12 Server (port) entries are allowed and each port number can only be assigned to one IP address.

RESET: Click “RESET” to clear the settings on the page.

Server List: The Local Server IP Addresses will appear on the screen.

List: If there is any Local Server in the Server List, click on the **down arrow ▼** to select the desired Server Number on the list.

DELETE: After selecting the Server Number in the “**List**”, click on “**DELETE**” to remove the Server from the list. You can only delete one Server at a time.