

## Packet Filter

**Network Adapter Address Filter:** filter according to **local** computer's network adapter MAC address (also known as the adapter card's Physical Address).

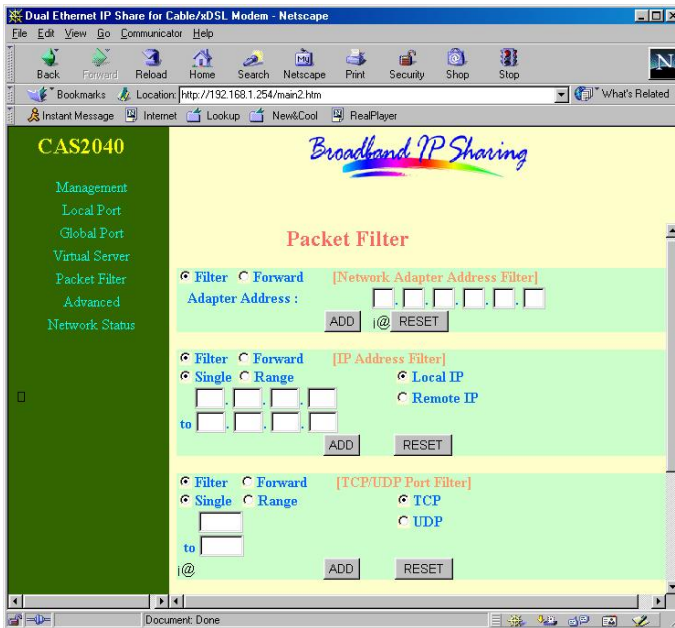
**Filter:** Drop the packets.

**Forward:** Pass the packets.

**Adapter Address:** Enter the computer's network adapter MAC address.

**ADD:** Add the entry in the Filter List.

**RESET:** Clear the entries.



**IP Address Filter:** Filter with computer's IP address. You can filter a single IP, or a range of the IP addresses.

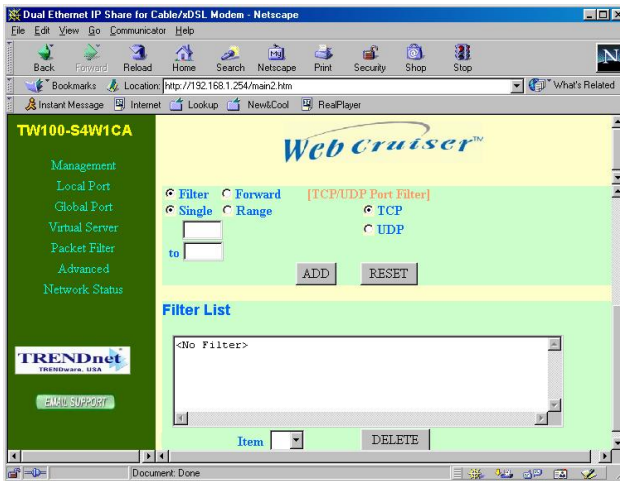
- **Local IP:** Filtering IP address of a **local** computer.
- **Remote IP:** Filtering IP address of a **remote** server (this remote server is a web server on the Internet).

*Note: Use "Remote IP Filter" function to prohibit all local stations from accessing certain web sites on the Internet (requires web site's IP address).*

**Single/Range:** For selecting between a specific IP Address or a range of IP Addresses.

**ADD:** Add the entry in the Filter List.

**RESET:** Clear the entries.



**TCP/UDP Port Filter:** Filtering by the port number. You can set filter for a single port or a range of ports.

- **TCP port:** filtering according to the Connection-Based Application Service on the **remote** server using the port number.
- **UDP port:** filtering according to the Connectionless Application Service on the **remote** server using the port number.

**ADD:** Add the entry in the Filter List.

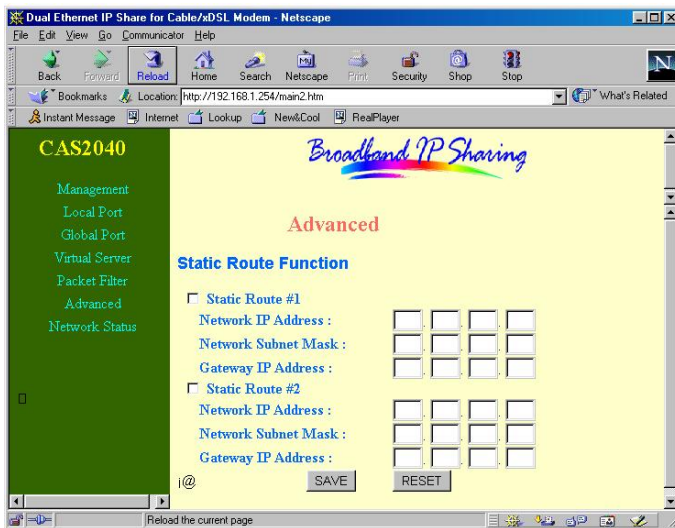
**RESET:** Clear the entries.

When you have finished setting the filters, the added filters will appear on the **Filter List**. To remove a filter, select the **Filter** number by clicking the **down arrow ▼** next to “**Item**”, and click **Delete**. *Note: You can input up to six filters in this device and you can only set each filter type to either **filter** or **forward**. For example, you can't set one IP address to **filter** and set another IP address to **forward**. You must set them both to either **filter** or **forward**. However, you can set to **filter** an “Adapter Address” and set to **forward** an “IP address”.*

## Advanced Settings

You can set static routes to manually administrate the network topology/traffic when the dynamic route is not effective enough.

Select “**Static Route #1**” or “**Static Route #2**”, enter the settings, and click “**SAVE**” to save settings. Click “**RESET**” to clear all entries.



## Network Status

**Sessions List:** Displays active Internet sessions through this device.

**IP Client/ Port Client:** The local network IP address/port number of one end point of a session.

**Port Fake:** Featuring NAT, the Port Fake is used to translate the local network IP addresses for connecting to the Internet.

**IP Remote/Port Remote:** The outside network IP address/port number of the other end of a session.

**Users List:** Displays the current active users (up to 128 users).

Dual Ethernet IP Share for Cable/DSL Modem - Netscape

File Edit View Go Communicator Help

Back Forward Reload Home Search Netscape Print Security Shop Stop

Bookmarks Location: http://192.168.1.254/main2.htm What's Related

Instant Message Internet Lookup New&Cool RealPlayer

**CAS2040**

- Management
- Local Port
- Global Port
- Virtual Server
- Packet Filter
- Advanced
- Network Status

*Broadband IP Sharing*

**Network Status**

**Sessions List**

i@	IP	Port	Port	IP	Port	i@
TU	client	client	fake	remote	remote	IdId
<No TCP Sessions>						
<No UDP Sessions>						

Active >> TCP:0 UDP:0 (Maximum >> TCP:128 UDP:64)

**Users List**

Document: Done