

# **ET-UW100**

802.11n/b/g compliant 2.4GHz WiFi System USB Dongle

**APO Generic**

**User Guide**

## **Federal Communication Commission Interference Statement**

This equipment has been tested and found to comply with the limits for a Class B digital device, pursuant to Part 15 of the FCC Rules. These limits are designed to provide reasonable protection against harmful interference in a residential installation. This equipment generates, uses and can radiate radio frequency energy and, if not installed and used in accordance with the instructions, may cause harmful interference to radio communications. However, there is no guarantee that interference will not occur in a particular installation. If this equipment does cause harmful interference to radio or television reception, which can be determined by turning the equipment off and on, the user is encouraged to try to correct the interference by one of the following measures:

- Reorient or relocate the receiving antenna.
- Increase the separation between the equipment and receiver.
- Connect the equipment into an outlet on a circuit different from that to which the receiver is connected.
- Consult the dealer or an experienced radio/TV technician for help.

FCC Caution: Any changes or modifications not expressly approved by the party responsible for compliance could void the user's authority to operate this equipment.

This device complies with Part 15 of the FCC Rules. Operation is subject to the following two conditions: (1) This device may not cause harmful interference, and (2) this device must accept any interference received, including interference that may cause undesired operation.

For product available in the USA/Canada market, only channel 1~11 can be operated. Selection of other channels is not possible.

This device and its antenna(s) must not be co-located or operation in conjunction with any other antenna or transmitter.

### **IMPORTANT NOTE:**

#### **Federal Communication Commission (FCC) Radiation Exposure Statement**

This EUT is compliance with SAR for general population/uncontrolled exposure limits in ANSI/IEEE C95.1-1999 and had been tested in accordance with the measurement methods and procedures specified in OET Bulletin 65 Supplement C. This equipment should be installed and operated with minimum distance 0.5 cm between the radiator & your body.

## **IC Statement**

**This Class B digital apparatus complies with Canadian ICES-003.**

Operation is subject to the following two conditions: (1) this device may not cause interference, and (2) this device must accept any interference, including interference that may cause undesired operation of the device.

Cet appareil numérique de la classe B est conforme à la norme NMB-003 du Canada.

For product available in the USA/Canada market, only channel 1~11 can be operated. Selection of other channels is not possible.

This device and its antenna(s) must not be co-located or operation in conjunction with any other antenna or transmitter.

## **IMPORTANT NOTE:**

### **IC Radiation Exposure Statement**

This EUT is compliance with SAR for general population/uncontrolled exposure limits in IC RSS-102 and had been tested in accordance with the measurement methods and procedures specified in IEEE 1528. This equipment should be installed and operated with minimum distance 0.5cm between the radiator & your body.

# Table of Contents

---

Chapter 1: Introduction	5
Package Contents	5
How it works	5
System requirements	5
Appearance	5
ET-UW100 Image	5
Start using	6
Chapter 2: Utility control	7
Utility Form	8
Simple control	9
Update FW	9
Network Setting	10
IP Setting	11
Wireless Setting	11
WiFi Status	12
Refresh Button	12
Save button	12
Close Button	12

# Chapter 1: Introduction

## Package Contents

The following items should be included:

- 1pcs ET-UW100
- 1pcs User manual

If any of the above items are damaged or missing, please contact your dealer immediately.

**Notice:** Abocom has the right to exchange the design of package and include items without inform the users.

## System requirements

**OS:** Windows XP SP2 with administrator privilege. Windows Vista, Windows 7.

**CPU:** Intel Pentium M 1.7Ghz (2005) is workable at 5 frames per second.

For 15 frames per second, a dual-core CPU (2006) is recommended.

**Graphic card:** A stand-alone graphic card is recommended, but not required.

A good graphic card could double frame rate for a slow CPU.

### ➤ Important Notice:

For better transmitting quality, we strongly recommend to put the wireless receiver horizontally in open space, do not put them into cabinet or cupboard that will reduce the wireless transmitting signal.

# Appearance

[ ET-UW100 ]



Item	Part	Description
1	LED	Blue LED, indicate the activity signal.
2	USB slot	Connector to your NB and PC , support USB2.0 , downward fit USB 1.0

## Start Using

1. Confirm your **NB / PC** already power on and work normally.
2. **Plug in** the ET-UW100 to your NB. (don't plug-in before Windows start)



Please pay patient to await the NB desktop screen to reveal on the projector or LCD TV which user decided.

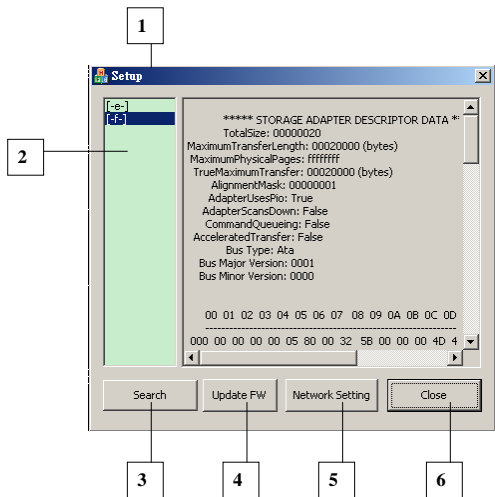
## Chapter 2: Utility Control



- When user plug-in the ET-UW100 to NB or PC, and collocate with ET-UW100\_tool\_lite.exe  
It will show the Utility.



Utility form:



Item	Part	Description
1	Control Window	Main Control Window
2	Virtual CD-ROM Device	Show the Virtual CD-ROM location
3	Search	Search AP in environment
4	Update FW	Update ET-UW100 and VB202 FW
5	Network setting	User's desktop screen resolution
6	Close	Close the main Window.

## Simple control

### Update FW:

To choice what the FW need be update, and use the "Browse" button to find the correct file path.



Item	Part	Description
1	Boot Loader	Update the boot loader of ET-UW1007
2	Dongle	Update the Kernel of ET-UW100
3	CDROM ISO	Update the ISO of ET-UW100
4	Receiver Wi-Fi	Update the Wi-Fi module FW of the collocate Receiver
5	Receiver	Update the Main board FW of the collocate Receiver

## Network setting:

User could manual the Wireless setting; include the security, searching function in this page.

The screenshot shows a 'Network Setting' window with three main sections: IP Setting, Wireless Setting, and WiFi Status.

**IP Setting:**

- Radio buttons:  STATIC,  DHCP,  Auto IP
- IP Address: 192 . 168 . 168 . 220
- Netmask: 255 . 255 . 255 . 0
- Gateway: 192 . 168 . 168 . 254
- MAC Address: 00:12:0E:9A:EB:25
- Master DNS: 0 . 0 . 0 . 0
- Slave DNS: 0 . 0 . 0 . 0
- Current IP: 0 . 0 . 0 . 0
- AutoIP Probe Count: 2
- AutoIP Announce Count: 2
- AutoIP Packet Interval: 200

**Wireless Setting:**

- Network Type:  Infrastructure,  AdHoc
- Authentication:  OPEN,  SHARED,  WPAPSK,  WPA2PSK
- Encryption:  NONE,  WEP,  TKIP,  AES
- SSID: VB20x-849
- Channel: 6, Country Region: 1: CH1~13
- WEP Key 1, 2, 3, 4: (empty)
- WPAPSK: (empty)

**WiFi Status:**

Channel: 0, SSID: , RSSI: 0, SNR: 0

Tx OK: 0, Tx Err: 0, One Collision: 0, TxRate: 1000000

Rx OK: 4948, Rx Err: 0, More Collisions: 0

Ch...	SSID	BSSID	Encr...	Auth...	RSSI	Mode	Ne
3	ZyXEL_Gigatest...	00:0c:43:30:52...	NONE	OPEN	-82	11b/g/n	
7	dd-wrt	00:12:0e:b1:d2...	NONE	OPEN	-76	11b/g/n	
6	Dick	00:50:18:45:dd...	WEP	OPEN	-62	11b/g	

Buttons: Refresh, Save, Close

#### IP setting:

- Mode: ET-UW100 provide three modes for user choice. STATIC / DHCP / Auto IP.
- IP address: User could manual key-in the IP address.
- Net mask: User could manual key-in the Net mask address.
- Gateway: User could manual key-in the Gateway address.
- MAC address: It is factory default value. Un-changeable.
- Master DNS: User could manual key-in the Master DNS address.
- Slave DNS: User could manual key-in the Slave DNS address.
- Current IP: It is factory default value. Un-changeable.
- Auto IP Probe Count: User could manual key-in the value for Auto IP mode.
- Auto IP Announce Count: User could manual key-in the value for Auto IP mode.
- Auto IP Packet Interval: User could manual key-in the value for Auto IP mode.

#### Wireless setting:

- Network Type: ET-UW100 provide two modes for user choice. Infrastructure / AdHoc.
- Authentication: ET-UW100 provide four modes for user choice. OPEN / Shared / WPAPSK / WPA2PSK.
- Encryption: ET-UW100 provide four modes for user choice. NONE / WEP / TKIP / AES.
- SSID: This will base on the AP which ET-UW100 searching and login.
- Channel: This will base on the AP wireless channel which ET-UW100 searching and login.
- Country Region: This is factory default. Un-changeable.
- WEP Key 1~4: User could manual key-in the password under WEP security mode.
- WPAPSK: User could manual key-in the password under WPAPSK security mode.

#### WiFi Status:

This block will reveal the current WiFi status of ET-UW100 (Unchangeable).

The reveal items include:

- WiFi Channel
- SSID
- RSSI value
- SNR Value
- TX OK packet quantity.
- TX Error packet quantity.
- RX OK packet quantity.
- RX Error packet quantity.
- One Collision value.
- More Collisions value.
- TX Rate value

#### Refresh Button:

User could use this button to side-survey the wireless AP around the range of ET-UW100 availability searching performance.

#### Save Button:

User could save the option setting value by this button.

#### Close Button:

Close the option window.

