

REGULATORY NOTICES

Federal Communications Commission Notice

This equipment has been tested and found to comply with the limits for a Class B digital device, pursuant to Part 15 of the FCC Rules. These limits are designed to provide reasonable protection against harmful interference in a residential installation. This equipment generates, uses, and radiates -radio frequency energy and, if not installed and used in accordance with the instructions, may cause harmful interference to radio communications. However, there is no guarantee that interference will not occur in a particular installation.

⚠CAUTION!

- ⚠ CAUTION! Danger of explosion if an improper battery is substituted. If a replacement is needed, only replace with a manufacturer issued battery pack.
- ⚠ Do not dispose of the battery pack in a fire. -They may explode. Check with local authorities for proper disposal instructions.

この装置は、情報処理装置等電波障害自主規制協議会（VCCI）の基準に基づくクラスB情報技術装置です。この装置は、家庭環境で使用することを目的としていますが、この装置がラジオやテレビジョン受信機に近接して使用されると、受信障害を引き起こすことがあります。
取扱説明書に従って正しい取り扱いをして下さい。

T

ABLE OF CONTENTS

1.	GETTING STARTED.....	1
1.1.	WELCOME	1
1.2.	SAFETY INSTRUCTIONS AND CARE OF YOUR WIRELESS THIN CLIENT	1
1.3.	CHECKLIST	3
2.	GETTING TO KNOW YOUR WIRELESS THIN CLIENT	5
2.1.	PARTS NAMES	5
2.2.	THE CRADLE (OPTIONAL).....	8
2.3.	THE BATTERY AND AC ADAPTER	9
2.4.	THE STYLUS	10
2.5.	TOUCH-SCREEN DISPLAY.....	11
2.6.	DISPLAY PROPERTIES	11
2.7.	THE CRADLE (OPTIONAL).....	11
3.	MANAGING YOUR INFORMATION.....	12
3.1.	DATA INPUT	12
	<i>Software Keyboard</i>	<i>12</i>
3.2.	DATA SYNCHRONIZATION	13
4.	CONNECTING OTHER DEVICES	22
5.	GETTING ONLINE.....	23
6.	TROUBLESHOOTING.....	24


1. Getting Started

1.1. Welcome

Congratulations! With your new Wireless Thin Client you will be able to create, manage and share information, send and receive email, and carry out research from virtually anywhere! Your Wireless Thin Client gives you freedom; easy access to the Internet, and the 800X600 SVGA screen offers high resolution for all your Tablet uses.


This manual will guide you through the Tablet's simple set-up, introduce you to its range of features and help you source extra information.

1.2. Safety Instructions and Care of your Wireless Thin Client

 **CAUTION!** Danger of explosion if an improper battery is substituted. If a replacement is needed, only replace with a manufacturer issued battery pack.

- During normal usage and charging, the battery pack heats up. This is caused by energy that has been generated and a chemical charge that has occurred inside the battery pack. - This is not a cause for concern.
- You should charge batteries at temperatures from 10°C to 30°C (from 50 °F to 85 °F). Lower temperatures require a longer charging time.

- Do not carry a battery in your pocket, purse, or other container where metal objects could short-circuit the battery pack. The resulted excessive current flow can cause extremely high temperatures and may result in damage from burns.
- Do not use your Wireless Thin Client in a wet environment, for instance, near a bathtub, sink, or any other place where there is risk of moisture.
- To help prevent electric shock, plug the AC adapter into a three prong, grounded power source. - If a two-prong extension plug is absolutely needed, use a 3-wire cable with properly grounded plugs.
- If your Wireless Thin Client includes a modem PC Card, disconnect the modem cable during electrical storms to avoid the remote risk of electrical shock from lightening via the telephone line.
- PC Cards may increase in temperature over an extended period of use. Use care in handling these cards.

 Do not dispose of the battery pack in a fire. -They may explode. Check with local authorities for-proper disposal instructions.

- When traveling, never check your Wireless Thin Client as baggage. -You can put your Wireless Thin Client through an ~~X~~ ray security machine, but never put your Wireless Thin Client through a metal detector. Have a charged battery with you in case you are asked to turn on the Tablet.
- When traveling, do not place the Wireless Thin Client in an overhead compartment where it can slide around. - Do not drop your Wireless Thin Client or subject it to mechanical shocks.
- Protect your Wireless Thin Client from environmental hazards such as dirt, dust, food, liquids, temperature extremes, and over exposure to sunlight.

- When you change environments rapidly, in respect to temperature and humidity, with your Wireless Thin Client, condensation may form on or within the Tablet. To avoid potential damage to your Wireless Thin Client, allow sufficient time for the moisture to evaporate before using.
- When disconnecting cables from your Wireless Thin Client, be sure to pull on the connector or the strain relief loop, not on the cable itself. -As you pull, keep it evenly aligned to avoid bending the connector pins. -Never force a connector into a port.- Make sure the connector and port are aligned correctly.
- Before you clean your Wireless Thin Client, turn it off, remove the battery, and unplug the power source.
- Clean your computer with a soft cloth dampened with water rather than with liquid or aerosol cleaners.
- Clean the screen with a soft, clean cloth and commercial window cleaner that does not contain wax or abrasives. -Always apply the cleaner to the cloth, not the screen. If the display contains grease or some other contaminant, use isopropyl alcohol instead of commercial cleaner.

1.3.Checklist

Check to see that the package your Wireless Thin Client came in includes these items:

- Wireless Thin Client
- AC Adapter



- Power Cord



- Battery Pack



- Stylus



- User Guide



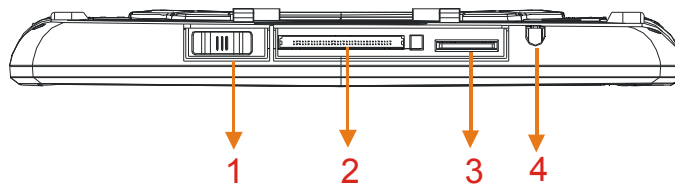
2. Getting to Know Your Wireless Thin Client

2.1. Parts Names

Your Wireless Thin Client features powerful functions and connectivity for you to create, manage and transfer your information, send and receive email and explore the World Wide Web. This section outlines your Wireless Thin Client's components.

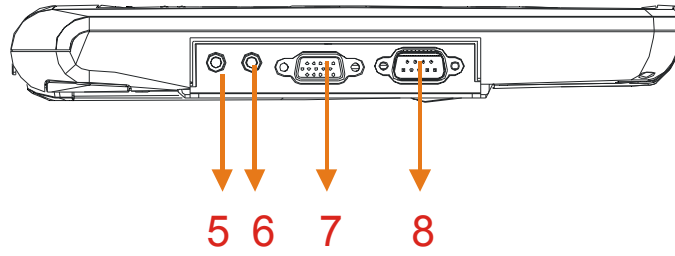
Top Side

1. On/Suspend Switch
2. PCMCIA Card Slot
3. SD Card Slot
4. Stylus Storage



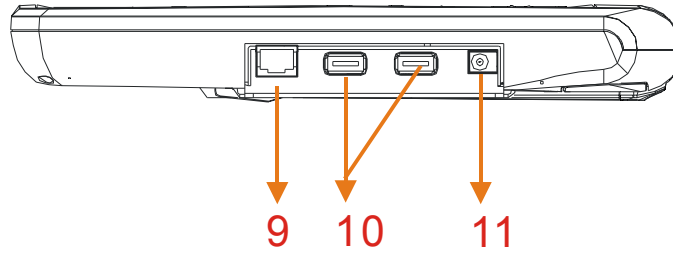
Right Side

5. Microphone
6. Headphone
7. VGA-Out Connector
8. RS-232 Connector



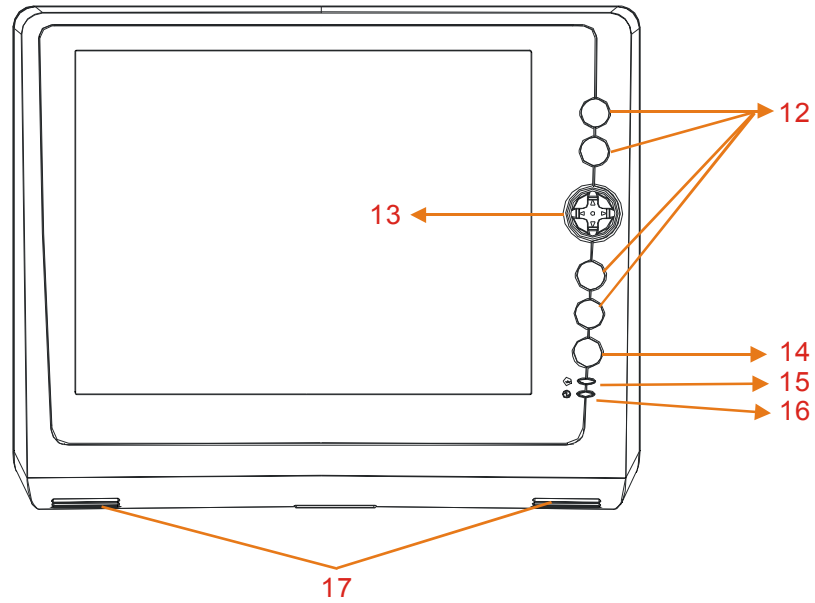
Left Side

- 9. RJ-45 Port
- 10. USB Type A Port x 2
- 11. DC IN Jack



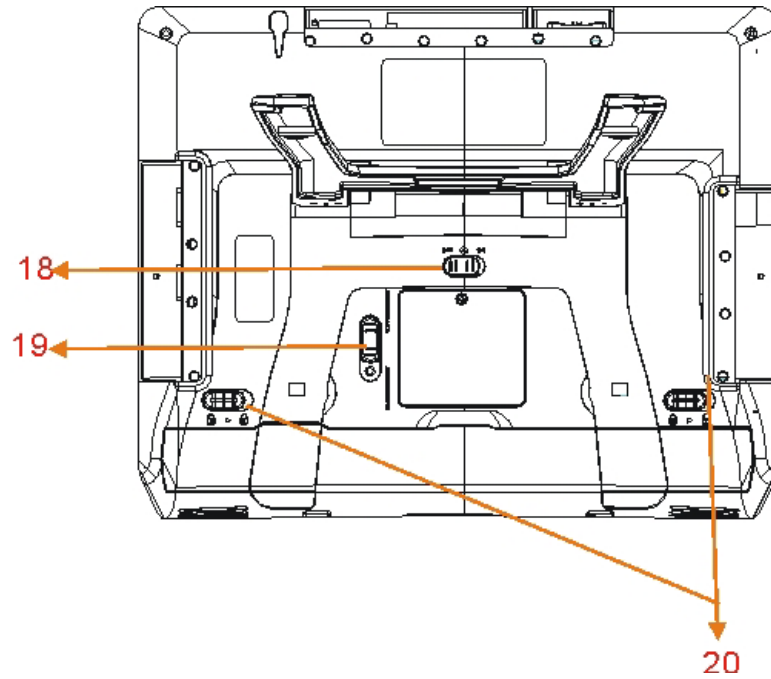
Front

- 12. Function Keys Button
- 13. 4-way Mover Button
- 14. Keyboard Button
- 15. Wireless LED Indicator
- 16. Battery LED Indicator
- 17. Internal Microphone



Back

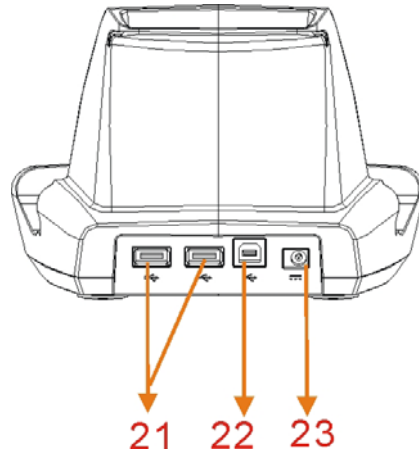
- 18. RF On/Off Switch
- 19. Hardware/Software Reset Switch
- 20. Battery Latches



2.2. The Cradle (Optional)

The cradle lets you ‘dock’ your Wireless Thin Client on your desk, making it easy to read information, add peripherals, or to synchronize with your PC.

- 21. USB Type A Port x 2
- 22. USB Type B Port
- 23. DC IN jack



2.3. The Battery and AC Adapter

Your Wireless Thin Client has two power sources, battery and AC. To run your Wireless Thin Client from the wall, use the supplied AC adapter cable.

The battery charges when the Tablet is connected to the AC power. The yellow indicator on the front of your Wireless Thin Client indicates the battery is charging.

- Indicator orange: Battery is fully charged
- Indicator blinking: Battery is charging
- Indicator off: System is in the suspend mode

When fully charged and not in use, your Wireless Thin Client battery has a two week life.

Note: When turning on your Wireless Thin Client but it goes to suspend immediately, that means the battery volume is 0%. Please

charge your Tablet within one day, or you will lose all data in memory.

To check your battery level, or to adjust the time before your battery switches off (power schemes) after the Tablet is continuously idle, go to **Start→Settings→Control Panel→Power**, or double-click on the power icon in taskbar.

For further tips on optimizing your battery, go to **Start→Help→Settings→Power**.

2.4. The Stylus

The Stylus has been specially designed for use with your Wireless Thin Client.



IMPORTANT: It is strongly recommended that you use the provided stylus at all times; fingers or other instruments may damage your screen.

If you find that your Wireless Thin Client is not responding properly to your taps, you may need to **recalibrate** your screen. To do this, go to **Start→Settings→Control Panel→Stylus**. Once there, select the **Calibration** tab and follow the instructions.

Your stylus can be conveniently stored in the side of your Wireless Thin Client.

The **ON/Suspend switch** on the topside of your Wireless Thin Client, when in the **Suspend** position, ensures that the Tablet isn't accidentally turned on. -Sliding the switch to the **ON** position resumes the Tablet.

2.5.Touch-screen Display

Your Wireless Thin Client is equipped with a touch screen. -You can use the stylus that works like a mouse to click or double-click a selected icon, and open it. **In addition**, tap your Tablet's desktop with your stylus **for over one (1) second**, it will act as 'right-click'.

2.6.Display Properties

This function allows you to set the background on your desktop, and the colors displayed on your interface. -To access these functions, go to **Start→Settings→ Control Panel→Display→Background**, or tap the desktop with your stylus over **one (1) second**, and it will act as 'right-click' to run the Display properties.

2.7.The Cradle (Optional)

The cradle lets you 'dock' your Wireless Thin Client, making it easy to use your desk, to read information, or to add peripherals such as a keyboard or a mouse.


In addition, the cradle increases your connectivity, with USB Type A and B (for synchronization with your PC) ports [2 A-Type and 1 B-Type]. -By removing the insert in the cradle's pocket (by sliding the insert to the right and lifting it up), the cradle can accommodate Wireless Thin Client with the battery.


3. Managing Your Information

3.1. Data Input

To input data into this Wireless Thin Client, you can choose to use the Software Keyboard described below or an External USB Keyboard via a USB 1.1 keyboard as stated above.

Software Keyboard

The  icon appearing in the taskbar provides you a Software Keyboard functions like a real keyboard. The 'CAP' key locks the keys to uppercase; the 'Shift' key switches the keys to uppercase for one click only.

Once finished with the handwriting and keyboard, click on the  icon in taskbar and select **Hide Input Panel**.

3.2. Data Synchronization

To share information between your Wireless Thin Client and your PC/Laptop, you need to establish a direct PC Connection. There are **two** ways to make direct connection.

A. Active sync via USB port of the Cradle Station.

Step 1. Cable Connection:

- i. Plug the **USB Type B Connector** of USB cable to the **USB Type B Port** at the rear side of the cradle.
- ii. Plug the **USB Type A Connector** of USB cable to the USB Type A Port in your PC/Laptop.

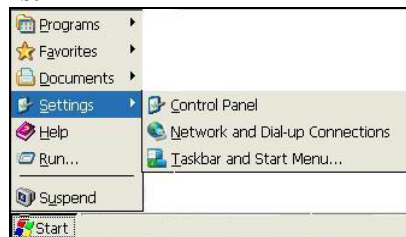
Step 2. PC Setup:

Prerequisite: To make the connection, you will need to install the ActiveSync 3.7 (or higher) software to your PC/Laptop. To download this freeware, go to:

<http://www.microsoft.com/mobile/downloads/activesync.asp>

On your Tablet:

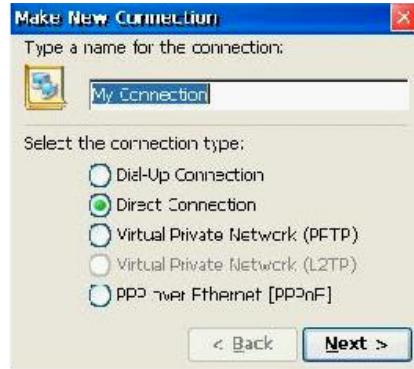
- i. Go to **Start** → **Settings** → **Network and Dial-up Connections**.



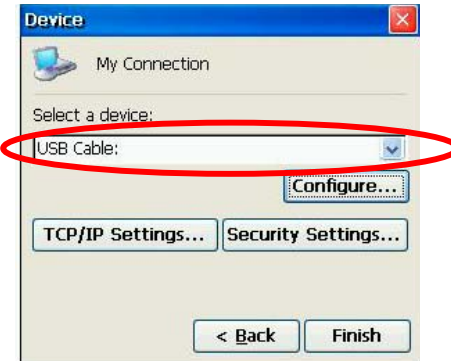
- ii. Double click **Make New Connection**.



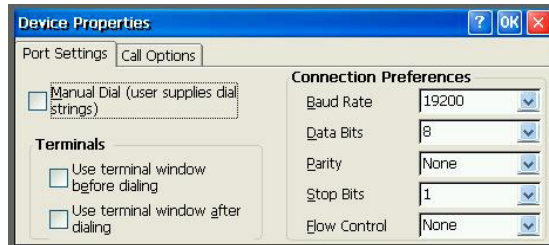
- iii. When Windows prompts you to type a name for the connection, name the connection appropriately. Select the connection type to be **Direct Connection**. Click **Next**.



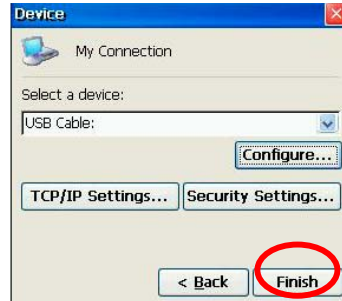
- iv. Press the down arrow “v” to select **USB cable**.



- v. Click **Configure...** to set the **Connection Preference**. Set the Baud Rate at **19200**. Click **OK**.



vi. Click **Finish**.

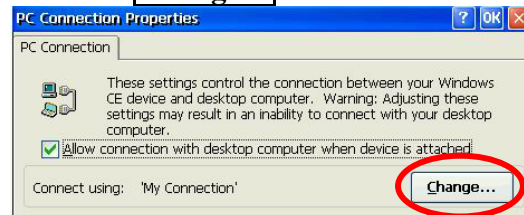


vii. Go to **Start** → **Settings** → **Control Panel**.

viii. Double click **PC Connection**.



ix. Click on **Change...**



- x. Press the down arrow “v” to select the newly established connection from the pull-down menu.



- xi. Click **OK** to complete the setup.

On your PC/Laptop

- i. Make sure Microsoft ActiveSync is well installed in your PC/Laptop.
- ii. Open **Microsoft ActiveSync**.
- iii. Select **File → Get Connected**. Both your PC/Laptop and the Tablet will detect the connection and launch the counterpart software to make the connection.



- iv. When finishing the connection, there will be a pop-up windows showing: ”**Set Up a Partnership**”. Please select “**No**” and “**Next**”. Now you have established the connection successfully.



Set Up a Partnership

Before you can synchronize information between a mobile device and this computer, you must create a partnership between them.

Would you like to set up a partnership?

Yes

Set up a partnership so that I can synchronize information between my device and this computer.

No

I don't want to synchronize information between my device and this computer as a guest so that I can copy information between my device and this computer.

B. Active Sync via a DB-9 RS-232 cable (two female connectors at both ends).

Step 1. Cable Connection:

- i. Plug one end to the **RS-232 Connector** (|O|O) at the right side of the Tablet.
- ii. Plug the other end to the RS-232 port in your PC/Laptop.

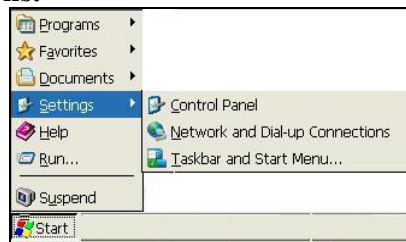
Step 2. PC setup:

Prerequisite: To make the connection, you will need to install the ActiveSync 3.7 (or higher) software to your PC/Laptop. To download this freeware, go to:

<http://www.microsoft.com/mobile/downloads/activesync.asp>

On your Tablet:

- i. Go to **Start → Settings → Network and Dial-up Connections.**



- ii. Double click **Make New Connection.**



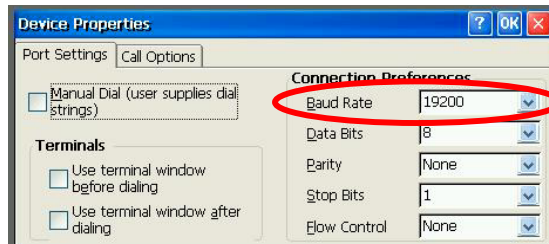
- iii. When Windows prompts you to type a name for the connection, name the connection appropriately. Select the connection type to be **Direct Connection**. Click **Next**.



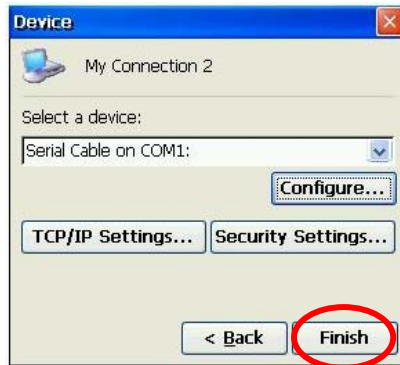
- iv. Press the down arrow “v” to select “Serial Cable on COM1:”.



- xii. Click **Configure...** to set the **Connection Preference**. Set the Baud Rate at **19200**. Click **OK**.



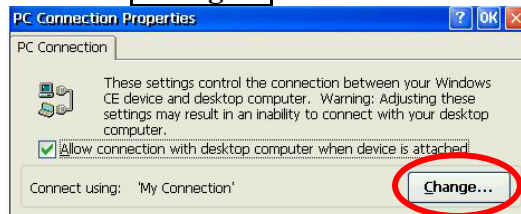
- v. Click **Finish**.



- vi. Go to **Start** → **Settings** → **Control Panel**.
- vii. Double click **PC Connection**.



- xiii. Click on **Change...**



- xiv. Press the down arrow “v” to select the newly established connection from the pull-down menu.



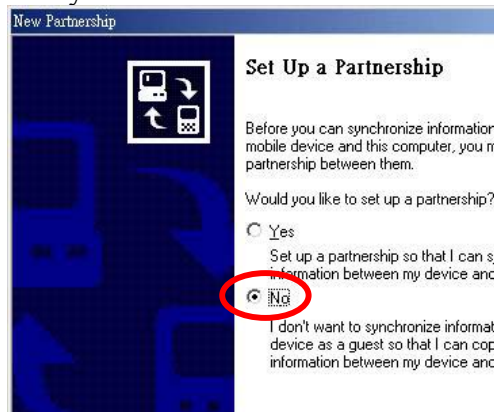
- viii. Click **OK** to complete the setup.

On your PC/Laptop

- i. Make sure Microsoft ActiveSync is well installed in your PC/Laptop.
- ii. Open **Microsoft ActiveSync**.
- iii. Select **File →Get Connected**. Both your PC/Laptop and the Tablet will detect the connection and launch the counterpart software to make the connection.

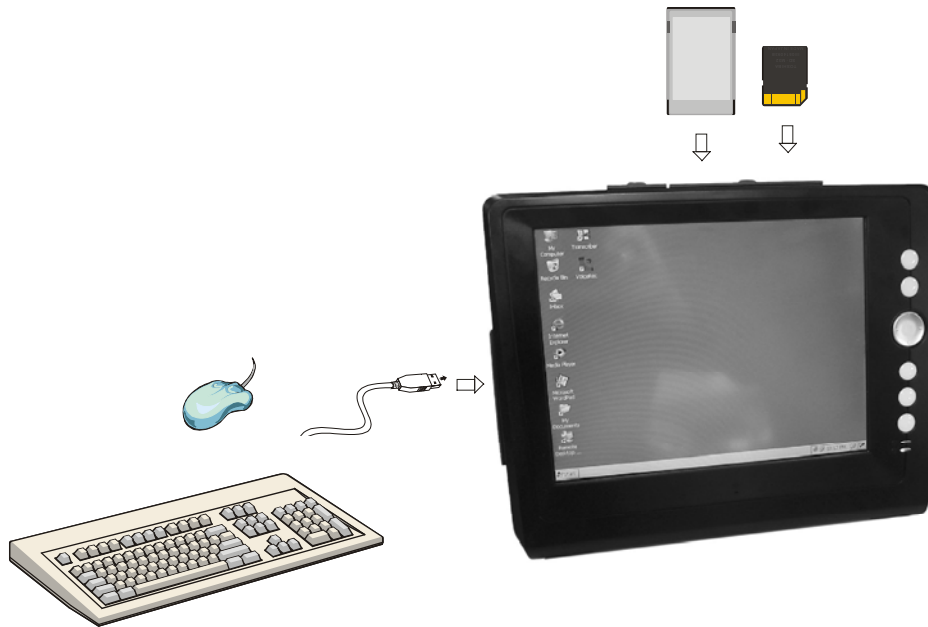


- iv. When finishing the connection, there will be a pop-up windows showing: "Set Up a Partnership". Please select "No" and "Next". Now you have established the connection successfully.



4. Connecting Other Devices

Your Wireless Thin Client is designed to support a number of external devices. The two USB Type A ports on the left side let you add USB 1.1 keyboard, mouse or Flash disk. Whereas the built-in PCMCIA and SD Card slots allow you to read/write these two kinds of memory cards from/to this Wireless Thin Client.

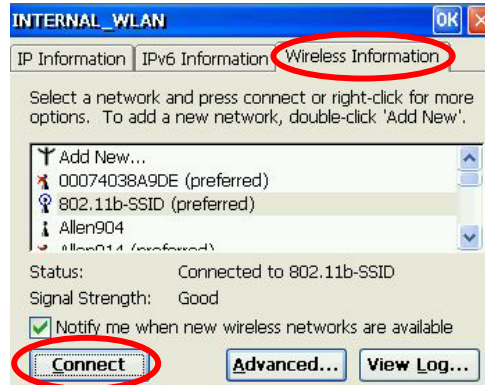


5. Getting Online

1. Double-click the **Internal WLAN** icon in your taskbar.



2. Select the “**Wireless Information**” tab.
3. Select your preferred network (AP) and click the **Connect** button to associate.



6. Troubleshooting

For problems with your Wireless Thin Client, go to **Start→Help**. This brings up a general user guide to reference. Most questions will be able to be answered from this resource.

Common Problems / Frequently Asked Questions

The Wireless Thin Client will not turn on!

- Make sure the On/Suspend switch is set to 'On'
- If device does not power on, use the AC Adapter to plug the Tablet into the wall.
- If this does not turn the Tablet on, push the software reset button located at the rear panel. (See the previous section titled Parts Names.

I touch the screen with my stylus, and the mouse arrow is in an entirely different place!

- This is a sure sign that you need to re-calibrate your touch screen.
- Use the arrow keys and navigate the mouse arrow. -If you press the arrow buttons and the mouse does not move, press button G. This will activate the arrow keys for mouse use.
- Go to **Start→Settings→Control Panel→Stylus**
- Click the calibration tab.
- Click “recalibrate” and follow the instructions.

How do I turn off my Wireless Thin Client?

- You can turn off your Wireless Thin Client by simply going to the Start Menu and choosing '**Suspend**'. - This will put the device in standby mode. -To resume your Wireless Thin Client, switch the **On/Suspend switch** on the top of your Tablet.
- Slide **On/Suspend switch** to the **Suspend** position, which will turn off your Wireless Thin Client and ensure it isn't accidentally turned on by clicking on the buttons.

How do I restart my Wireless Thin Client? (If it freezes / hangs up, or I just loaded new software)

- If you need to restart you Wireless Thin Client unscrew your stylus, and hit the software-reset button on the side of the Tablet. If your Wireless Thin Client is not responding to any commands (that is, it freezes or hangs) you can use this same reset button. The software-reset button will not affect data on your Wireless Thin Client system.
- If your system freezes or hangs, and does not respond, even after you hit the software reset button, first remove the battery to restart the system. -If this does not help the situation, you will need to use the hardware reset button, marked on the diagram below. Use a small Philips head screw driver and remove the screws. Lift the cover and press the reset button.- Note that this will wipe all memory from your Wireless Thin Client.

My screen is dirty, how can I clean it without harm to the screen?

- Clean the screen with a soft, clean cloth and commercial window cleaner that does not contain wax or abrasives.

Always apply the cleaner to the cloth, not the screen. If the display contains grease or some other contaminant, use isopropyl alcohol instead of commercial cleaner. Note: paper toweling and other paper products are abrasive. Be sure to use a clean cloth when wiping the screen.

Can I protect my Wireless Thin Client with password access?

- Yes, to protect your valuable information, you may want to set up a password for your Wireless Thin Client. Go to **Start→Setting→Control Panel → Password**. Remember your password and keep it in safety. -If you lost your password, the only way is to execute **Hardware Reset**, but it will wipe out all the memory you saved.

Federal Communication Commission Interference Statement

This equipment has been tested and found to comply with the limits for a Class B digital device, pursuant to Part 15 of the FCC Rules. These limits are designed to provide reasonable protection against harmful interference in a residential installation. This equipment generates, uses and can radiate radio frequency energy and, if not installed and used in accordance with the instructions, may cause harmful interference to radio communications. However, there is no guarantee that interference will not occur in a particular installation. If this equipment does cause harmful interference to radio or television reception, which can be determined by turning the equipment off and on, the user is encouraged to try to correct the interference by one of the following measures:

- Reorient or relocate the receiving antenna.
- Increase the separation between the equipment and receiver.
- Connect the equipment into an outlet on a circuit different from that to which the receiver is connected.
- Consult the dealer or an experienced radio/TV technician for help.

This device complies with Part 15 of the FCC Rules. Operation is subject to the following two conditions: (1) This device may not cause harmful interference, and (2) this device must accept any interference received, including interference that may cause undesired operation.

FCC Caution: Any changes or modifications not expressly approved by the party responsible for compliance could void the user's authority to operate this equipment.

IMPORTANT NOTE:

FCC Radiation Exposure Statement:

This equipment complies with FCC radiation exposure limits set forth for an uncontrolled environment. End users must follow the specific operating instructions for satisfying RF exposure compliance.

This transmitter must not be co-located or operating in conjunction with any other antenna or transmitter.

"[AboCom Systems, Inc.](#)" declare that [10.4" Portable Wireless Thin Client with certified adapter \(FJ25XXXXX\)](#) is limited in CH1~CH11 by specified firmware controlled in USA."