

# 1

## Power on the Extender

**Step1.** Plug your Wireless Extender into an electrical socket.

**Step2.** Check the LEDs: the power LED should be always on when system is ready.

# 2

## Connect to the Wireless Extender

### Notes:

The Wireless Extender is designed as a pure wireless device, so there are no any RJ-45 ports for Ethernet cable to connect to. Please prepare any IEEE802.11 ac/b/g/n compliant wireless adapter for next setup step.

**Step1.** Default SSID is “PLW522MS-24” and security key is “12345678”.

**Step2.** Set your wireless adapter in DHCP client and waiting for getting IP Address from the Wireless Extender.

**Step3.** Open a web browser and enter “192.168.1.254” in URL field to open the configuration page.

**Step4.** Default user name is “admin” and password is “password” to access WEB GUI.

**“The product shall be used in the residential environment notwithstanding use in commercial, business environments. If you want to use other than the above environments, please contact AboCom first.”**

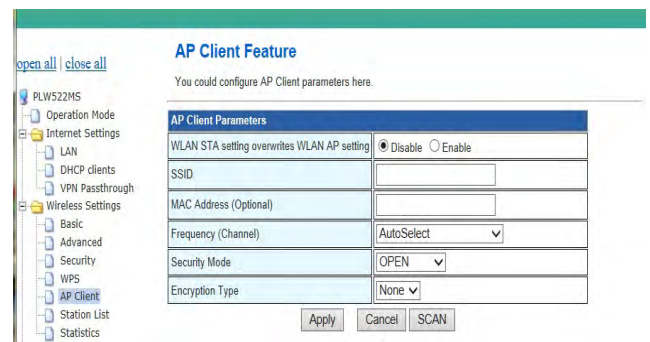
# 3

## Setup for Repeater Mode

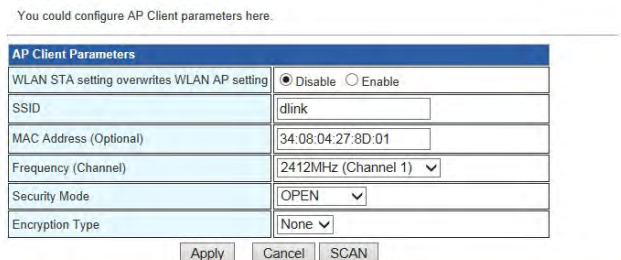
### Manually Configuration:

**Step1.** Open Wireless Settings / AP Client page.

**Step2.** Setup the SSID and Security of AP that you want to connect to: Click APPLY to finish.



**OR** you can use “SCAN” to refresh the wireless network and select an AP to connect to.



Site Survey							
#	SSID	BSSID	Signal Strength	Channel	Encryption	Authentication	Network Type
<input checked="" type="radio"/>	dlink	34:08:04:27:8D:01	100%	1	Not Use	NONE	In
<input type="radio"/>	ra_7620	00:E0:98:05:28:00	91%	1	Not Use	NONE	In
<input type="radio"/>	zoy	40:4A:03:45:21:E1	100%	2	Not Use	NONE	In
<input type="radio"/>	XPERIA	00:E0:98:00:00:68	100%	3	AES	WPA2-PSK	In

### WPS Configuration:

**Step1.** Press the WPS button of the Wireless Extender over 3 seconds.

**Step2.** Then press the WPS button of the wireless router/AP over 3 seconds too. Step 1 and Step 2 need to be done in 200 seconds.

# 4

## Check if Connected

The green-checked icon ahead is the Wireless Router/AP which the Wireless Extender is working to.

Site Survey							
#	SSID	BSSID	Signal Strength	Channel	Encryption	Authentication	Network Type
<input checked="" type="radio"/>	dlink	34:08:04:27:8D:01	100%	1	Not Use	NONE	In
<input type="radio"/>	MT7620_AP_02E098002628	00:E0:98:02:26:28	100%	1	Not Use	NONE	In

# 5

## Hardware Button Behavior

### WPS button behavior:

Less than 2 sec → N/A, WPS LED no blinking.

More than 2 sec → Do WPS, WPS LED start blinking

### Reset button behavior:

Less than 2 sec → N/A, D5-D1 LEDs no blinking.

2-5 seconds → Do REBOOT, D5-D1 LEDs fast blinking.

More than 5 sec → Do Factory Default, D5-D1 LEDs blinking slowly.

## FCC Statement:

### Federal Communication Commission Interference Statement

This equipment has been tested and found to comply with the limits for a Class B digital device, pursuant to Part 15 of the FCC Rules. These limits are designed to provide reasonable protection against harmful interference in a residential installation. This equipment generates, uses and can radiate radio frequency energy and, if not installed and used in accordance with the instructions, may cause harmful interference to radio communications. However, there is no guarantee that interference will not occur in a particular installation. If this equipment does cause harmful interference to radio or television reception, which can be determined by turning the equipment off and on, the user is encouraged to try to correct the interference by one of the following measures:

- Reorient or relocate the receiving antenna.
- Increase the separation between the equipment and receiver.
- Connect the equipment into an outlet on a circuit different from that to which the receiver is connected.
- Consult the dealer or an experienced radio/TV technician for help.

FCC Caution: Any changes or modifications not expressly approved by the party responsible for compliance could void the user's authority to operate this equipment.

This device complies with Part 15 of the FCC Rules. Operation is subject to the following two conditions: (1) This device may not cause harmful interference, and (2) this device must accept any interference received, including interference that may cause undesired operation.

For product available in the USA/Canada market, only channel 1~11 can be operated. Selection of other channels is not possible.

This device and its antennas(s) must not be co-located or operating in conjunction with any other antenna or transmitter except in accordance with FCC multi-transmitter product procedures.

**IMPORTANT NOTE:**

**FCC Radiation Exposure Statement:**

This equipment complies with FCC radiation exposure limits set forth for an uncontrolled environment. This equipment should be installed and operated with minimum distance 20cm between the radiator & your body.

