

Quick User's Guide

For

IVT's Bluesoleil On AboCom's UBT4KH

This is a quick User's Guide for using Bluesoleil software to run Bluetooth applications of A2DP (Stereo) and Skype (Headset or VoIP) on AboCom's Bluetooth headset and UBT4KH USB dongle.

This Bluesoleil software is intended to support Bluetooth functions beyond just A2DP (Stereo) application. Please refer to IVT's website for detailed User's Guide and any support issues at <http://www.ivtcorporation.com>.

A. Install Bluesoleil software on Windows XP or 2000

NOTE: please uninstall other Bluetooth software before install Bluesoleil, especially from WidComm.

1. **DONOT** plug your UBT4KH into your PC/NB
2. Place Bluesoleil CD, or download the software from website and execute it (It is recommended to uninstall, without UBT4KH plugged in, older version before install newer one. There is no upgrade on installation.)
3. Follow the installation instructions to complete the installation. (PC/NB will re-start to activate the Bluesoleil.)
4. **NOTE and Strongly RECOMMENDED: Remove the Bluesoleil from Startup list so that it will not be automatically started when system boots up. Just run or execute the Bluesoleil when you need it.**

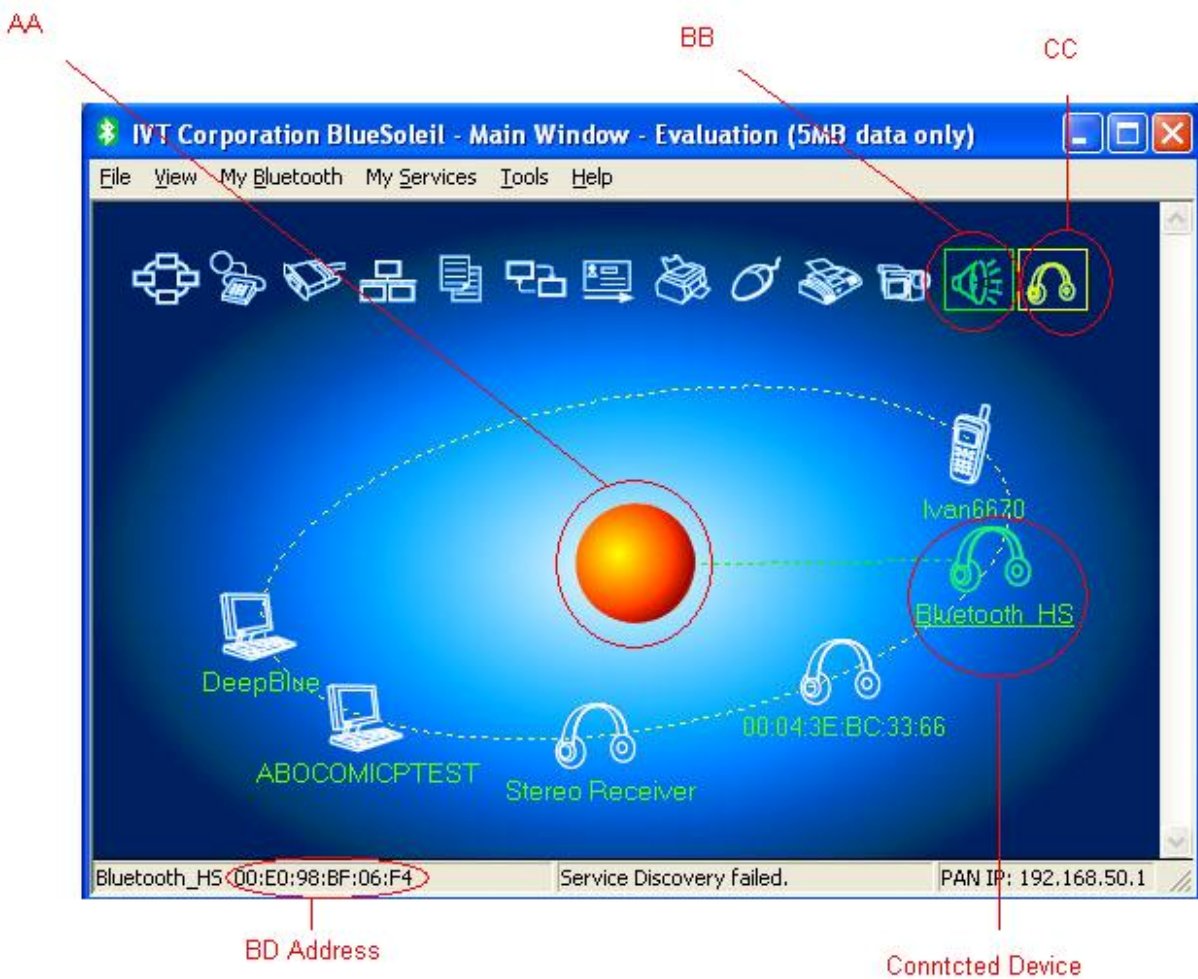
B. Run Bluesoleil for Skype

1. Execute the Bluesoleil software on Windows XP or 2000
2. Follow the instruction to plug into UBT4KH
3. Power on your AboCom Bluetooth Stereo headset
4. click on (AA) the bright center of the pictorial Sun to search Bluetooth devices
5. You should find a stereo headset on the surrounding trail matches your headset (with MAC or BD address or just a name of "Stereo headset") and you may see other Bluetooth devices nearby as well.
Note: The MAC address of BSH203 may be found inside the left cushion of ear cup. Other models may be found inside battery cover, or back of the devices.
6. You may click the (AA) to stop searching or let it run out of searching time.
7. Click on the stereo headset to activate a connection and available services.

8. You will see the icons of available services are highlighted and framed.
 9. For BSH203, you will see (BB) speaker for stereo music and (CC) headset for Skype or Mono Audio-MIC headset application.
 10. Click (CC). The LED will be blinking and you will hear ring tones on the headset to indicate a connection established.
 11. On the headset, click on the phone pick up bottom (same as power bottom on BSH203.)
 12. Go ahead to use Skype as usual. You may listen and talk on the Bluetooth headset.
- NOTE:** When using Skype, if you do not hear any voice you may need to check on “Control Panel”→”Sounds and Audio Devices”→”Audio” to check if Windows has switched your Sound device to Bluetooth. If not, you need to switch to UBT4KH – “Bluetooth AV/HS”.

C. Run Bluesoleil for A2DP Stereo Bluetooth

1. Follow the step 1-9 in above section B
2. Click (BB). The LED will be blinking to indicate a connection established. On BSH203, you will hear a short music played for connection.
3. Go ahead and play your favorite music on PC/NB



Federal Communication Commission Interference Statement

This equipment has been tested and found to comply with the limits for a Class B digital device, pursuant to Part 15 of the FCC Rules. These limits are designed to provide reasonable protection against harmful interference in a residential installation. This equipment generates, uses and can radiate radio frequency energy and, if not installed and used in accordance with the instructions, may cause harmful interference to radio communications. However, there is no guarantee that interference will not occur in a particular installation. If this equipment does cause harmful interference to radio or television reception, which can be determined by turning the equipment off and on, the user is encouraged to try to correct the interference by one of the following measures:

- Reorient or relocate the receiving antenna.
- Increase the separation between the equipment and receiver.
- Connect the equipment into an outlet on a circuit different from that to which the receiver is connected.
- Consult the dealer or an experienced radio/TV technician for help.

This device complies with Part 15 of the FCC Rules. Operation is subject to the following two conditions: (1) This device may not cause harmful interference, and (2) this device must accept any interference received, including interference that may cause undesired operation.

FCC Caution: Any changes or modifications not expressly approved by the party responsible for compliance could void the user's authority to operate this equipment.

IMPORTANT NOTE:

FCC Radiation Exposure Statement:

This equipment complies with FCC radiation exposure limits set forth for an uncontrolled environment. End users must follow the specific operating instructions for satisfying RF exposure compliance.

This transmitter must not be co-located or operating in conjunction with any other antenna or transmitter.