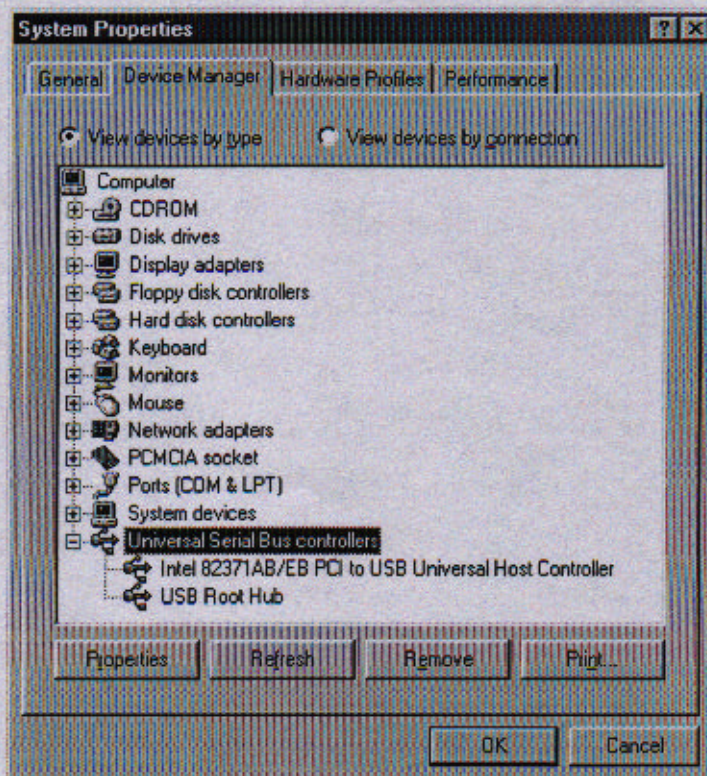


INSTALLATION

Precaution

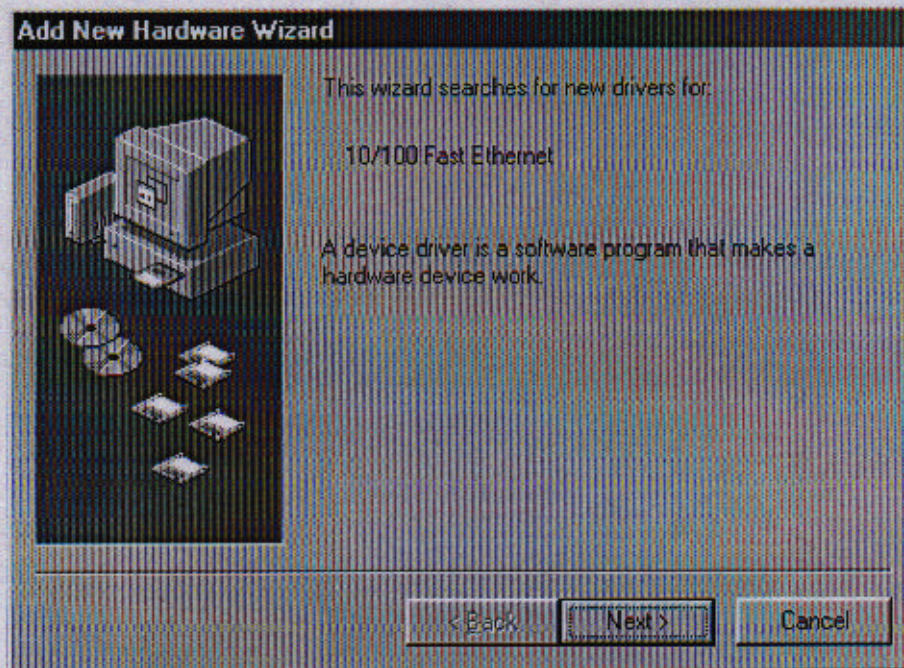
*Before the installation, make sure the USB port exists in your computer and is enabled. To check this, go to **My Computer** → **Control Panel** → **System**. Open the **Device Manager** tab. If the **Universal Serial Bus controller** device is found, it means your USB port is installed and enabled. If not, either no USB port is installed or the USB bios is not properly enabled. In this case, consult your computer dealer for USB support.*



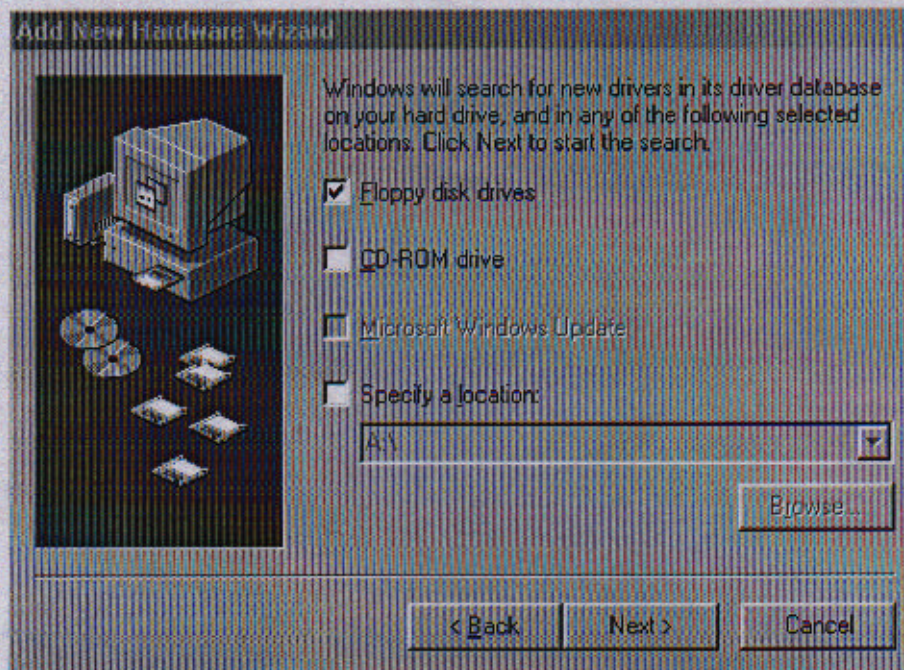
Getting Hooked Up

1. Locate the USB host port of your system. Align the USB connector toward the USB host port, push evenly and steadily until it is seated.
2. Connect another end of the USB connection cable to the device port (**USB B**) of your USB 10/100M Fast Ethernet Adapter until it clicks.

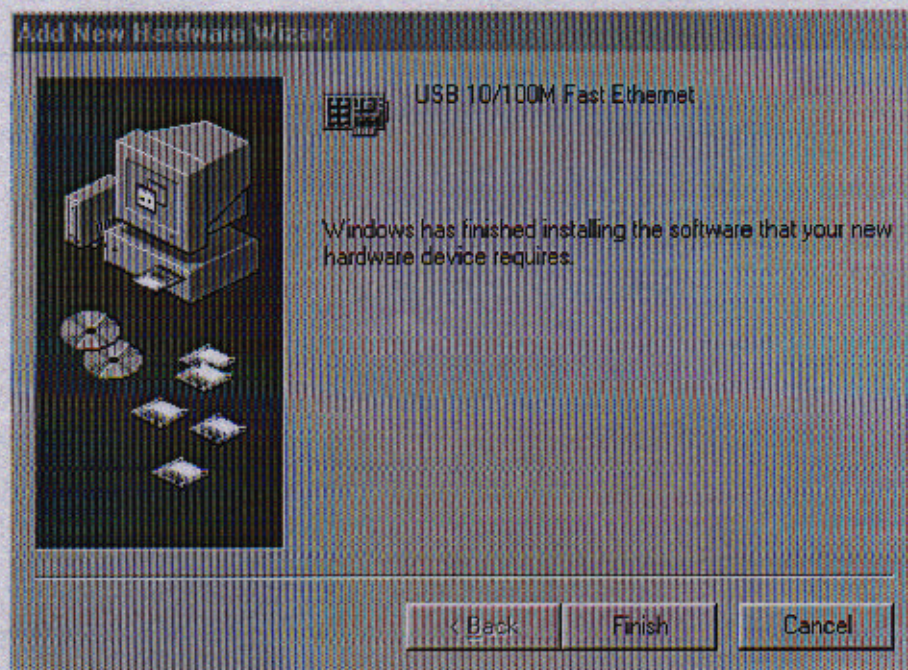
3. Connect the UTP cable to the Fast Ethernet Adapter.
4. Connect the other end to a Hub.
5. Windows 98 will automatically detect the new hardware device. Perform the following procedures for installing the device driver.



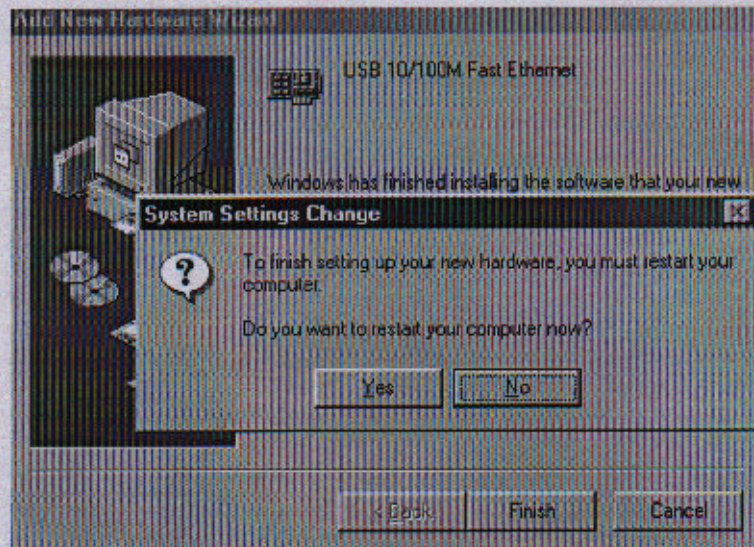
1. Insert the device driver disk into your floppy drive. When the above figure appears, click Next.



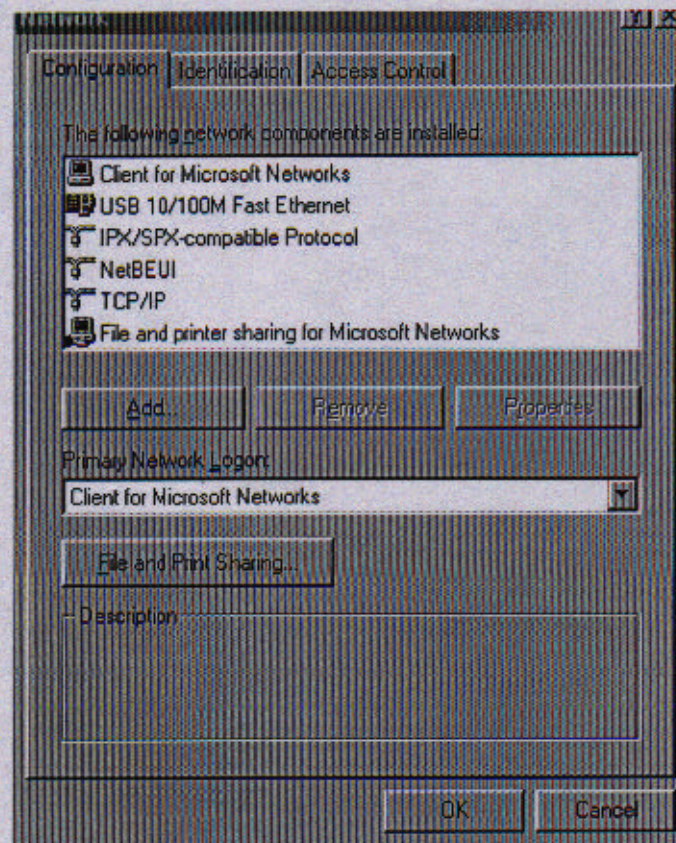
2. The installation program will proceed automatically. Follow the on-screen instruction to finish.



3. When Windows prompts you to restart your computer, click **No** to make some changes to your network settings.



4. Go to the **Start** menu. Point to **Settings**. Click **Control Panel**. Double-click **Network**.



5. When the Network dialog box appears, select **USB 10/100 Fast Ethernet** and click **Add**. Set the appropriate protocols and client for you needs. When completed, click **OK**.
6. Remember to restart your computer to activate the new device

Setup Diagnostics

You can perform the following steps to check if this USB 10/100M Fast Ethernet Adapter is well installed.

1. Go to **Desktop**.
2. Right-click **My Computer**.
3. Click **Properties**.
4. Open the **Device Manager** tab.
5. Click the plus sign “+”.

If the 10/100 USB Network Adapter appears as illustrated below, it means your 10/100 Fast Ethernet Adapter is well installed. If otherwise or a question mark “?” is found next to it, then the 10/100 Fast Ethernet Adapter is not properly installed.

