

802.11a/b/g Wireless LAN Mini PCI Card

Quick Install

Caution

This Quick Installation is meant to help you install the product quickly and easily. For detailed instructions on installation, configuration, and further setup options please consult the User Manual.

STEP 1 Hardware Installation

- 1 Make sure the computer is turned off. Remove the expansion slot cover from the computer.
- 2 Carefully slide the Wireless mini PCI Card into the mini PCI slot. Push evenly and slowly and ensure it is properly seated.
- 3 After the device has been installed to your computer, turn on your computer. Windows will detect the new hardware and then automatically copy all the files needed for networking.

STEP 2 Software Installation

- 1 Exit all Windows programs. Insert the CD-ROM into the CD-ROM drive of your computer. If the CD-ROM is not launched automatically, go to your CD-ROM drive (e.g. drive D) and double-click on **Setup.exe**

- 2 The main screen of the CD-ROM opens. Select **Install Driver & Utility** to start the installation.



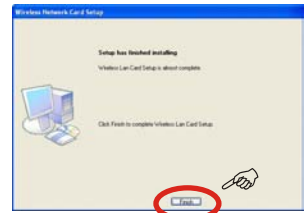
- 3 When the **License Agreement** screen appears, click **Yes** to accept and continue.



- 4 Click **Continue Anyway** to continue the software installation.



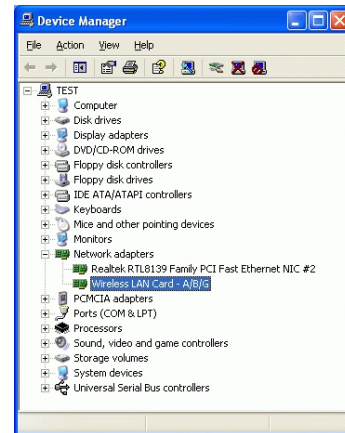
- 4 Click **Finish** to complete the software installation.



STEP 3 Installation Verification

To verify that the device has been properly installed in your computer and is enabled, go to Start → Settings → Control Panel → System (Hardware) → Device Manager

Expand the Network adapter item, if the **Wireless :AN Crad - A/B/G** is listed, it means that your device is properly installed and enabled

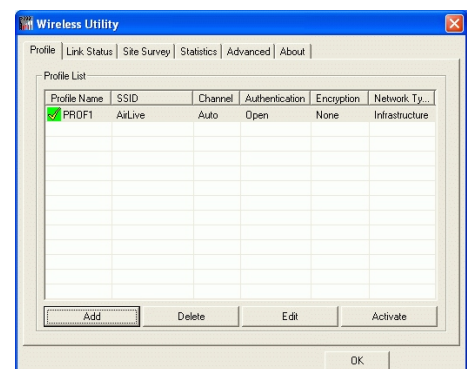


STEP 4 Using the Utility

All settings are categorized into **SIX** tabs, including **Profile Tab**, **Link Status Tab**, **Site Survey Tab**, **Statistics Tab**, **Advanced Tab** and **About Tab**

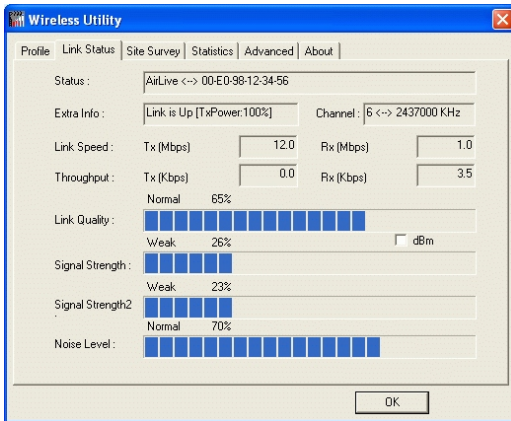
Profile Tab

Profiles can bookkeeping your favourite wireless settings among your home, office and other public hotspot. You may save multiple profiles, and activate the correct one at your preference.



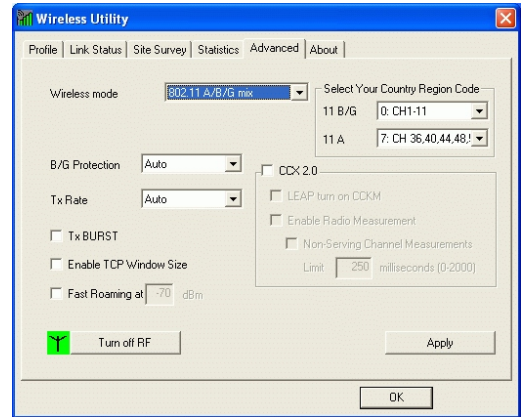
Link Status Tab

The **Link Status** screen displays the **Link Quality**, **Signal Strength** and some other current linking information.



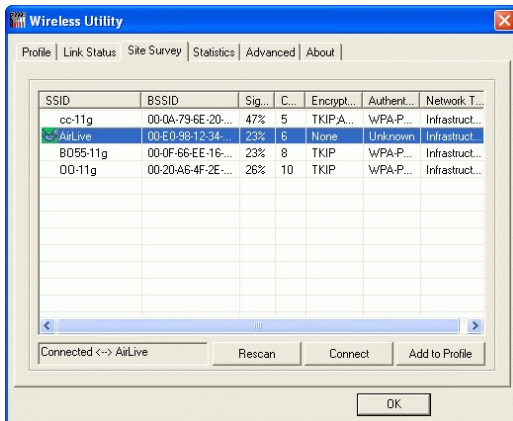
Advanced Tab

The Advanced tab lets you configure the advanced wireless settings including wireless security settings.



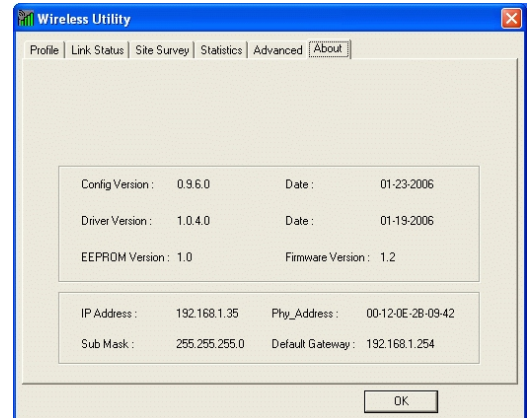
Site Survey Tab

The Site Survey screen displays a list of infrastructure and ad-hoc networks available for connection.



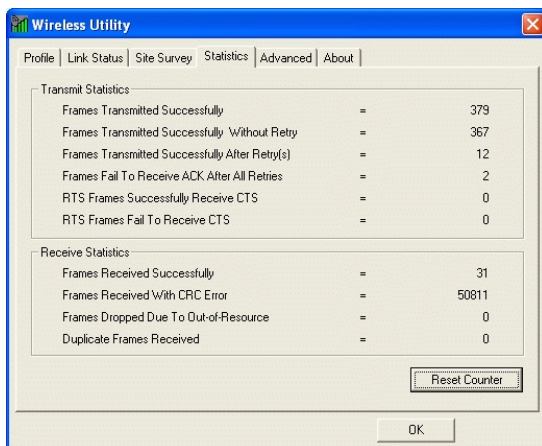
AboutTab

The About screen displays the basic version information about the Configure Version, Driver Version, EEPROM Version, Firmware Version.



Statistics Tab

The **Statistics** screen displays the statistics on your current network settings.



Federal Communication Commission Interference Statement

This equipment has been tested and found to comply with the limits for a Class B digital device, pursuant to Part 15 of the FCC Rules. These limits are designed to provide reasonable protection against harmful interference in a residential installation. This equipment generates, uses and can radiate radio frequency energy and, if not installed and used in accordance with the instructions, may cause harmful interference to radio communications. However, there is no guarantee that interference will not occur in a particular installation. If this equipment does cause harmful interference to radio or television reception, which can be determined by turning the equipment off and on, the user is encouraged to try to correct the interference by one of the following measures:

- Reorient or relocate the receiving antenna.
- Increase the separation between the equipment and receiver.
- Connect the equipment into an outlet on a circuit different from that to which the receiver is connected.
- Consult the dealer or an experienced radio/TV technician for help.

This device complies with Part 15 of the FCC Rules. Operation is subject to the following two conditions: (1) This device may not cause harmful interference, and (2) this device must accept any interference received, including interference that may cause undesired operation.

FCC Caution: Any changes or modifications not expressly approved by the party responsible for compliance could void the user's authority to operate this equipment.

This transmitter must not be co-located or operating in conjunction with any other antenna or transmitter.

IMPORTANT NOTE:

FCC Radiation Exposure Statement:

This equipment complies with FCC radiation exposure limits set forth for an uncontrolled environment. This equipment should be installed and operated with minimum distance 20cm between the radiator & your body.

This transmitter must not be co-located or operating in conjunction with any other antenna or transmitter.

This device is intended only for OEM integrators under the following conditions:

- 1) The antenna must be installed such that 20 cm is maintained between the antenna and users, and
- 2) The transmitter module may not be co-located with any other transmitter or antenna.
As long as 2 conditions above are met, further transmitter test will not be required. However, the OEM integrator is still responsible for testing their end-product for any additional compliance requirements required with this module installed (for example, digital device emissions, PC peripheral requirements, etc.).

IMPORTANT NOTE: In the event that these conditions can not be met (for example certain laptop configurations or co-location with another transmitter), then the FCC authorization is no longer considered valid and the FCC ID can not be used on the final product. In these circumstances, the OEM integrator will be responsible for re-evaluating the end product (including the transmitter) and obtaining a separate FCC authorization.

End Product Labeling

This transmitter module is authorized only for use in device where the antenna may be installed such that 20 cm may be maintained between the antenna and users. The final end product must be labeled in a visible area with the following: “Contains TX FCC ID: MQ4WCM6002”.

Manual Information That Must be Included

The users manual for OEM integrators must include the following information in a prominent location “ IMPORTANT NOTE: To comply with FCC RF exposure compliance requirements, the antenna used for this transmitter must be installed to provide a separation distance of at least 20cm from all persons and must not be co-located or operating in conjunction with any other antenna or transmitter.