

802.11b/g
Wireless Mini PCI Card
User's Manual

REGULATORY STATEMENTS

FCC Certification

The United States Federal Communication Commission (FCC) and the Canadian Department of Communications have established certain rules governing the use of electronic equipment.

Part15, Class B

This device complies with Part 15 of FCC rules. Operation is subject to the following two conditions:

- 1) This device may not cause harmful interference, and
- 2) This device must accept any interference received, including interference that may cause undesired operation. This equipment has been tested and found to comply with the limits for a Class B digital device, pursuant to Part 15 of the FCC Rules. These limits are designed to provide reasonable protection against harmful interference in a residential installation. This equipment generates and can radiate radio frequency energy, and if not installed and used in accordance with the instructions, may cause harmful interference to radio communications. However, there is no guarantee that interference will not occur in a particular installation. If this equipment does cause harmful interference to radio or television reception, which can be determined by turning off and on, the user is encouraged to try to correct the interference by one or more of the following measures:
 - Reorient or relocate the receiving antenna.
 - Increase the separation between the equipment and receiver.
 - Connect the equipment into an outlet on a circuit different from that to which the receiver is connected.
 - Consult the dealer or an experienced radio/TV technician for help.

Warning: Changes or modifications to this unit not expressly approved by the party responsible for compliance could void the user authority to operate the equipment.



CAUTION

1. To comply with FCC RF exposure compliance requirements, a separation distance of at least 20 cm must be maintained between the antenna of this device and all persons.
2. This Transmitter must not be co-located or operating in conjunction with any other antenna or transmitter.
3. For product available in the USA market, only channel 1~11 can be operated. Selection of other channels is not possible.

Table of Contents

INTRODUCTION	1
WIRELESS NETWORK OPTIONS	1
The Peer-to-Peer Network	1
The Access Point Network	2
INSTALLATION	3
HARDWARE INSTALLATION.....	3
SOFTWARE INSTALLATION.....	3
Device Installation Verification.....	5
CONFIGURATION	6
ACCESSING THE CONFIGURATION UTILITY	7
EASY CONFIG	7
MAIN TAB	10
PROFILE TAB	13
ADVANCED TAB	18
INFO TAB	20
ABOUT TAB	21
UNINSTALLATION.....	22

INTRODUCTION

The **802.11b/g Wireless Mini PCI Card** is a device that allows you connect your computer to a wireless local area network (LAN). A wireless LAN allows your system to use wireless Radio Frequency (RF) technology to transmit and receive data without physically attaching to the network. The wireless protocols that come with this product ensure data security and isolation from interference generated by other radio frequencies.

This card also allows you to take full advantage of your computer's mobility with access to real-time information and online services anytime and anywhere. In addition, this device eliminates the bother of pulling cable through walls and under furniture. It even allows you to place your system in locations where cabling is impossible. Modifying and augmenting networks has never been so easy.

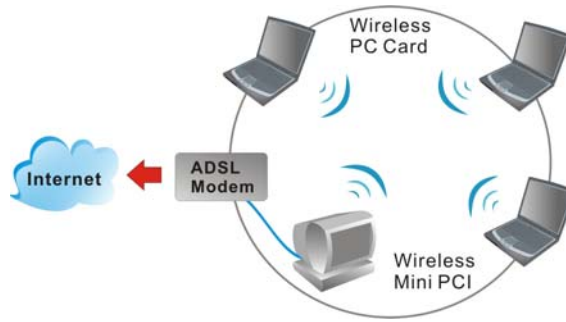
Wireless Network Options

The Peer-to-Peer Network

This network installation lets you set a small wireless workgroup easily and quickly. Equipped with wireless PC Cards or wireless Mini PCI, you can share files and printers between each PC and laptop.

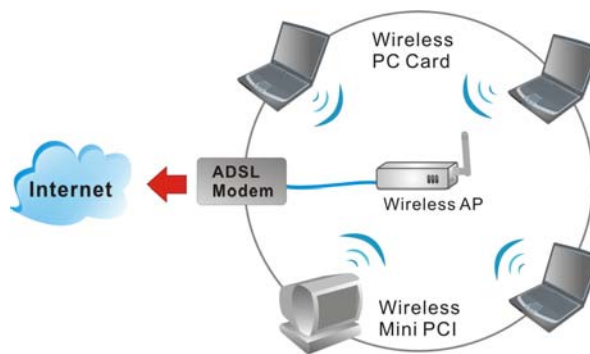


You can also use one computer as an Internet Server to connect to a wired global network and share files and information with other computers via a wireless LAN.



The Access Point Network

The network installation allows you to share files, printers, and Internet access much more conveniently. With Wireless LAN Cards, you can connect wireless LAN to a wired global network via an **Access Point**.



INSTALLATION

Hardware Installation

1. Make sure the computer is turned off. Remove the expansion slot cover from the computer.
2. Carefully slide the **Wireless Mini PCI Card** into the Mini PCI slot. Push evenly and slowly and ensure it is properly seated.
3. After the device has been connected to your computer, turn on your computer. Windows will detect the new hardware and then automatically copy all of the files needed for networking.

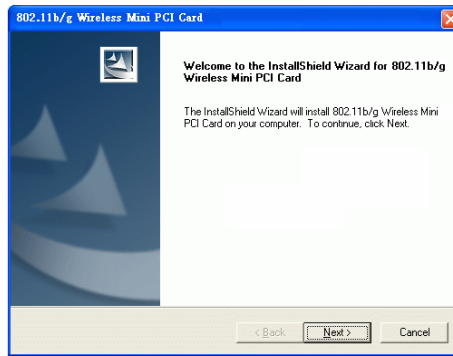
Software Installation

1. Exit all Windows programs. Insert the CD-ROM into the CD-ROM drive of your computer.

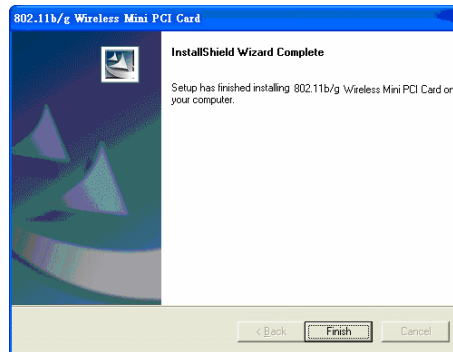
If the CD-ROM is not launched automatically, go to your CD-ROM drive (e.g. drive D) and double-click on **Setup.exe**.

2. The main screen of the CD-ROM opens. Click **Install Driver & Utility** to start the installation.

3. When the Welcome screen appears, click **Next** to continue.

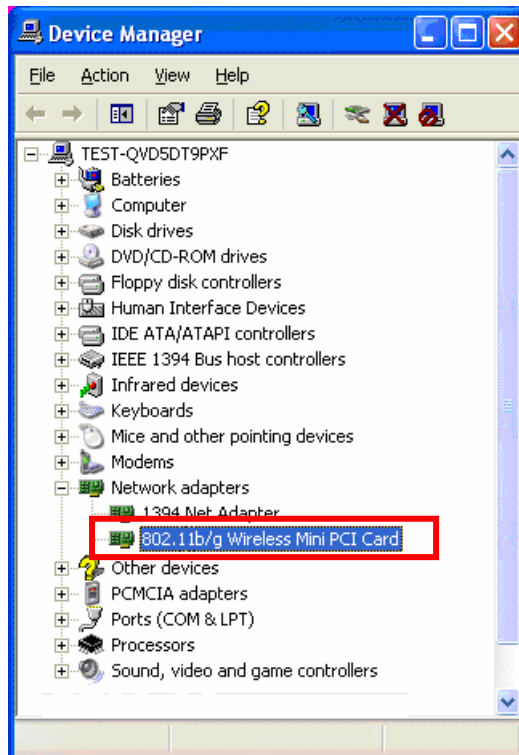


4. Click **Finish** to complete the software installation.



Device Installation Verification

To verify that the device has been properly installed in your computer and is enabled, go to **Start** → **Settings** → **Control Panel** → **System** (→ **Hardware**) → **Device Manager**. Expand the **Network adapters** item. If the **802.11b/g Wireless Mini PCI Card** is listed, it means that your device is properly installed and enabled.

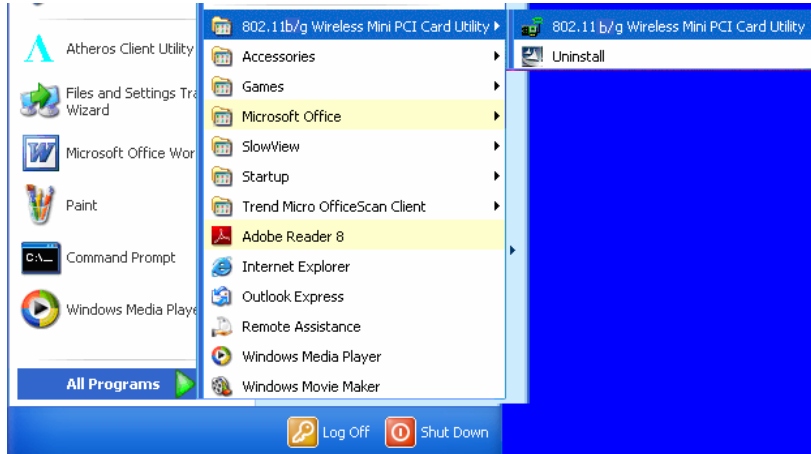


CONFIGURATION

After successful installation of the **Wireless Mini PCI Card**'s driver, the utility icon will display in the task bar. You will be able to access the Configuration Utility through the Network Status icon.



If the icon doesn't appear automatically, go to **Start → Programs → 802.11b/g Wireless Mini PCI Card Utility → Wireless Mini PCI Card Utility**, it will appear in the task bar.



Accessing the Configuration Utility

All settings are categorized into 5 Tabs:

Main Tab

Profile Manager Tab

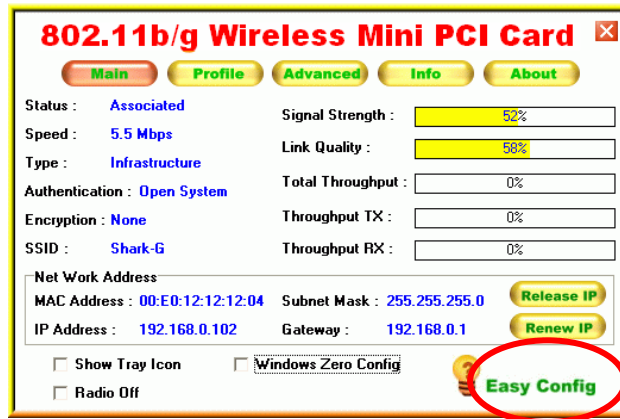
Advanced Tab

Info Tab

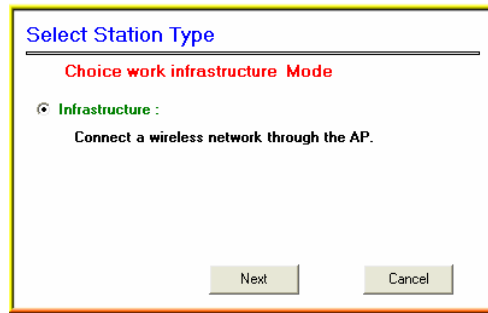
About Tab

Easy Config

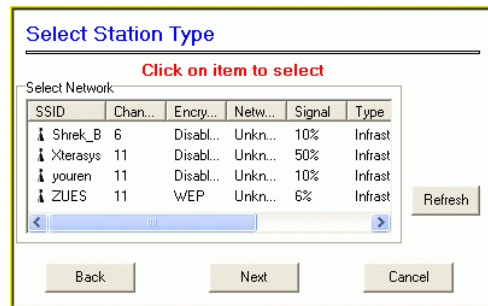
1. In the **Main** tab, click **Easy Config** on the right down corner to start a quick configuration.



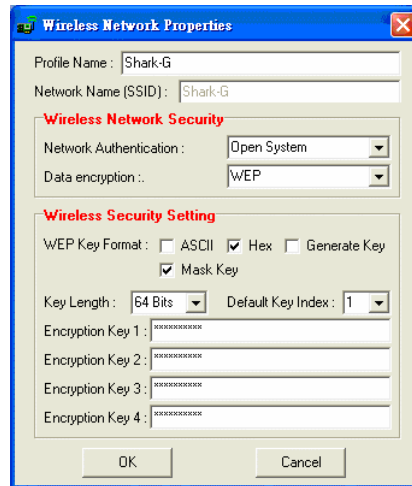
2. Select the wireless connection type- **Infrastructure**. Then click **Next** to continue.



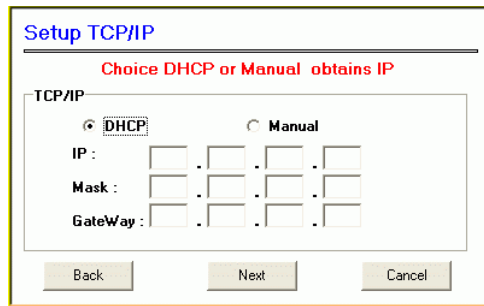
3. Select a wireless station on the list, and click **Next** to configure its settings.



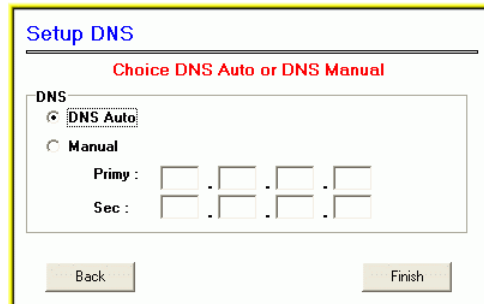
The following screen will appear for you to configure, for detailed configuration, please refer to **Profile** tab in the later selection.



4. Configure the network TCP/IP, you may select **DHCP** to obtain an IP address automatically or select **Manual** to set an IP address. Click **Next** to continue.

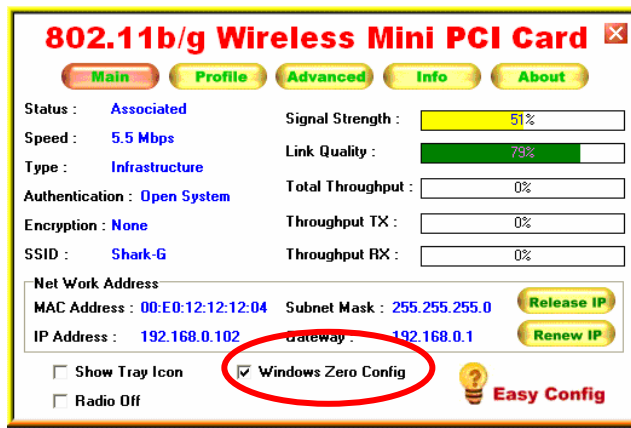


5. Select **DNS Auto** to obtain DNS automatically or select **Manual** to set the primary and secondary DNS. Click **Finish** to complete the **Easy Config** procedure.



Main Tab

The main tab enables you to scan for available networks, select a network to which to connect, modify the settings for the current connection.

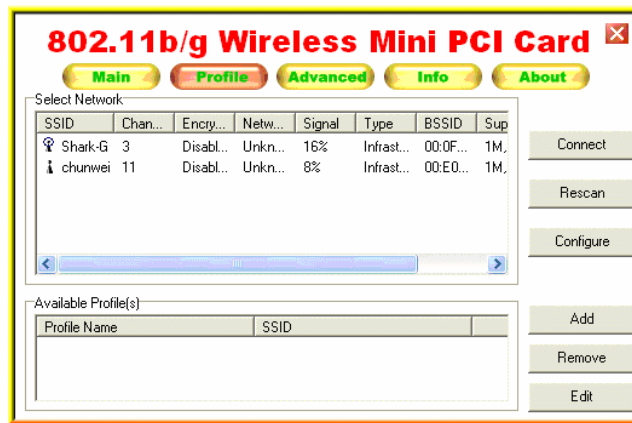


Status	Shows the current connection status.
Speed	Shows the connection speed.
Type	Shows the wireless connection type.
Authentication	Shows the authentication type.
Encryption	Shows the encryption type.
SSID	The SSID is the unique name shared among all points in your wireless network. The name must be identical for all devices and points attempting to connect to the same network.
Signal Strength	The signal strength from the network Access Point or station.
Link Quality	Shows the link quality percentage.
Total Throughput	Shows the total throughput percentage.
Throughput TX	The actual instantaneous transmitting rates.
Throughput RX	The actual instantaneous receiving rates.

Network Address	
MAC Address	The MAC address of this wireless adapter.
IP Address	The IP address of this wireless adapter.
Subnet Mask	The subnet mask of this wireless adapter.
Gateway	The default gateway address of the adapter.
<input type="checkbox"/> Show Tray icon	Place a check in the check box to show the utility icon in the tray.
<input type="checkbox"/> Radio Off	Place a check in the check box to disable the radio function.
<input type="checkbox"/> Windows Zero Config	<p>External Configuration Checkbox (Windows XP only): A checkbox that enables you to disable the WLAN Station Configuration Utility and indicates that the station driver is to be configured with Windows XP's built-in Zero Configuration Utility (ZCU).</p> <p>On Windows XP systems, the ZCU service is automatically stopped when the WLAN utility is installed. The ZCU is started when you check the Configure using Windows Zero Configuration checkbox.</p> <p>The checkbox is only displayed on Windows XP systems.</p>

Profile Tab

The Profile tab enables you to connect, rescan, configuration, add, remove and edit the profiles that the station uses to connect to WLAN networks.



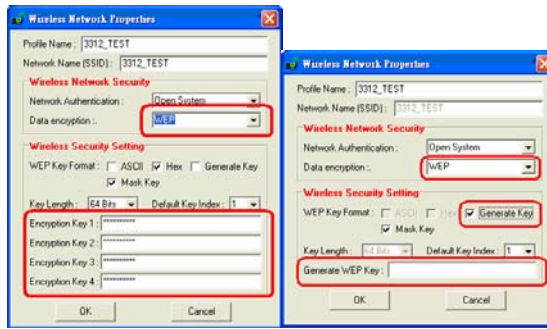
Connect	Select a wireless device that you want to connect with and click Connect button to make a connection. The wireless device you have connected will be added into the Available Profile(s) field below.
Rescan	Click Rescan button to refresh the wireless device list.
Configure	Click Configure to set up the detailed configuration.
Add	Click Add to add a wireless device into the Available Profile(s) field below.
Remove	Select a wireless device that listed in the Available Profile(s) field and then click Remove to delete it.
Edit	Select a wireless device in the Available Profile(s) field and then click Edit to change its configuration.

Wireless Network Properties

The Wireless Network Properties screen will appear if you just click **Connect**, **Configure** or **Add** buttons.

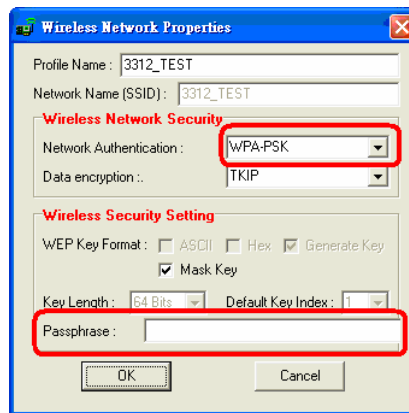


Profile Name	You may enter the preferred profile name in this column.
Network Name (SSID)	The SSID for the current profile.
Wireless Network Security	
Network Authentication	<p>The authentication type defines configuration options for the sharing of wireless networks to verify identity and access privileges of roaming wireless network cards.</p> <p>Select the Network Authentication from the pull-down list.</p> <p>Open System: If the Access Point is using "Open System" authentication, then the wireless adapter will need to be set to the same authentication type.</p> <p>Shared Key: Shared Key is when both the sender and the recipient share a secret key.</p> <ul style="list-style-type: none">● If WEP is selected from Data encryption pull-down menu, you can either input Encryption Key 1~4 or check the Generate Key box and enter WEP keys in the Generate WEP Key blank, then the system will generate keys automatically.




- **WPA-PSK/WPA2-PSK:** In the **Passphrase** field, enter the key (8~63 characters, case sensitive.) that you are sharing with the network for the WLAN connection. By default, the key that you type is masked with asterisks (*). To view the key that you entered, uncheck the **Mask Key** box.

If **WPA-PSK/WPA2-PSK** is selected from Data encryption pull-down menu, enter the Passphrase in the column to setup the wireless network security.



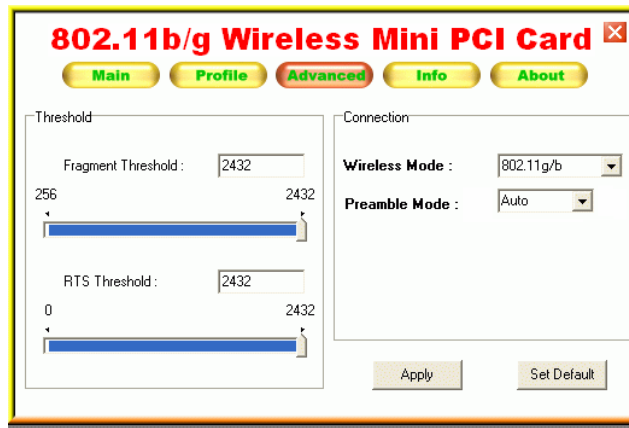
Data encryption	Select the data encryption from the pull-down menu, either TKIP or AES.
WEP Key Format	<ul style="list-style-type: none"> ● ASCII (American Standard Code for Information Interchange), the standard for assigning numerical values to the set of letters in the Roman alphabet and typographic characters. ● HEX (Hexadecimal): numbers from 0 to 9 and letters from A to F. ● Generate Key: Check the Generate Key box and enter WEP keys in the Generate WEP Key blank, then the system will generate keys automatically. ● Mask Key: Place a check in the check box to enable the Unmask Key function, this function is for concealing the WEP key.
Key Length	<p>Select the key length from the pull-down menu, either 64 Bit or 128 Bit.</p> <p>If you are using 64-bit WEP encryption, then the key must consist of exactly 10 hexadecimal characters or 5 ASCII characters. If you are using 128-bit WEP encryption, then the key 26 hexadecimal characters or 13 ASCII characters. Valid hexadecimal characters are “0” to “9” and “A” to “F”.</p>
Default Key Index	Select the default key index 1~4 from the pull-down menu.
Passphrase	Instead of manually entering WEP keys, you can enter a Passphrase, so that a WEP key is automatically generated. It is case-sensitive and should not be longer than 16 alphanumeric characters. This Passphrase must match the Passphrase of your wireless network.
Encryption Key 1~4	To configure your WEP settings. WEP (Wired Equivalent Privacy) encryption can be used to ensure the security of your wireless network. Select one Key and Key Size then

	<p>fill in the appropriate value/phrase in Encryption field.</p> <p><i>Note: You must use the same Key and Encryption settings for the both sides of the wireless network to connect.</i></p> <p>KEY 1 ~ KEY 4 : You can specify up to 4 different keys to <i>decrypt</i> wireless data. Select the Default key setting from the radio button.</p> <p>Encryption : This setting is the configuration key used in accessing the wireless network via WEP encryption.</p> <p>A key of 10 hexadecimal characters (0-9, A-F) is required if a 64-bit Key Length was selected.</p> <p>A key of 26 hexadecimal characters (0-9, A-F) is required if a 128-bit Key Length was selected.</p> <p>A key of 58 hexadecimal characters (0-9, A-F) is required if a 256-bit Key Length was selected.</p>
802.1x configure	
EAP TYPE	<p>WPA 802.1x/ WPA2 802.1x: Require setting up a RADIUS sever for authentication, RADIUS server manager will assign the username and password.</p> <p>Select the EAP TYPE from the pull-down list. Including TLS, TTLS and PEAP.</p>

	
Username	Type in the user name assigned to the certificate.
Certificate	Please query your network manager about the certificate, select the same certificate as the certification server.
OK	Click OK to save the configuration.
Cancel	Click Cancel to exit the configuration screen.

Advanced Tab

The **Advanced** tab displays the current status of the **Wireless Mini PCI Card**.



Threshold	
Fragment Threshold	The mechanism of Fragmentation Threshold is used to improve the efficiency when high traffic flows along in the wireless network. If your 802.11b/g Wireless LAN Adapter often transmits large files in wireless network, you can enter new Fragment Threshold value to split the packet. The value can be set from 256 to 2432. The default value is 2432 .
RTS Threshold	RTS/CTS Threshold is a mechanism implemented to prevent the “ Hidden Node ” problem. If the “Hidden Node” problem is an issue, users have to specify the packet size. <u>The RTS/CTS mechanism will be activated if the data size exceeds the value you set.</u> The default value is 2432 . This value should remain at its default setting of 2432 . Should you encounter inconsistent data flow, only minor modifications of this value are recommended.

Connection	<p>Wireless Mode: Select 802.11b or 802.11g/b from the pull-down menu.</p> <p>Preamble Mode: A preamble is a signal used in wireless environment to synchronize the transmitting timing including Synchronization and Start frame delimiter. Select from the pull-down menu to change the Preamble type into Auto, Long or Short.</p>
Apply	Click to save current changes.
Set Default	Click to restore default settings.

Info Tab

The **Info** tab displays information maintained by the driver, such as the number of packet errors and the total number of bytes received or transmitted. The tab also displays information about the current connection, as well as network information about the station. The statistics are for the period starting when you last connected to a network. The statistics are refreshed at least twice a second.

802.11b/g Wireless Mini PCI Card [X]

[Main](#)
[Profile](#)
[Advanced](#)
[Info](#)
[About](#)

Transmit		Card Status	
TX OK :	887	Short Radio Header :	YES
TX Error :	50	Encryption :	Disabled
TX Retry :	435	Authenticate :	Open System
TX Beacon OK :	0	Channel Set :	FCC
TX Beacon Error :	0	MAC Address :	00:E0:12:12:12:04
		Data Rate :	5.5 Mbps
		Channel (Frequency) :	3 (2422 MHz)
Receive		Status :	Associated
RX OK :	203	SSID :	Shark-G
RX Packet Count :	203	Network Type :	Infrastructure
RX Retry :	0	Power Save Mode :	None
RX CRC Error(0-500) :	0	Associated AP MAC :	00:0F:3D:41:42:32
RX CRC Error(500-1000) :	0	Associated AP IP :	
RX CRC Error(>1000) :	0	Up Time (hh:mm:ss) :	0:09:25
RX ICV Error :	0		

About Tab

Click on the **About** tab to view basic version information about the **OS Version**, **Utility Version**, **Driver Version**, **Firmware Version** and **EEPROM Version**.

802.11b/g Wireless Mini PCI Card [X]

[Main](#)
[Profile](#)
[Advanced](#)
[Info](#)
[About](#)

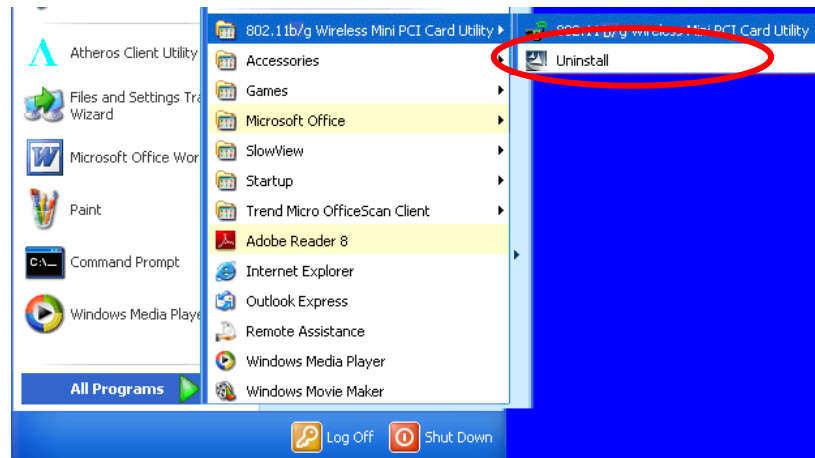
Copyright (C) 2005 Wireless LAN Configure Utility

OS Version :	Windows XP
Utility Version :	v1.1.0.060331
Driver Version :	5.105.0.1
EEPROM Version :	v1.0.0

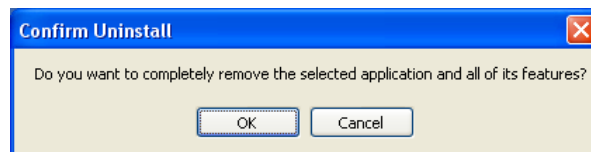
UNINSTALLATION

In case you need to uninstall the Utility and driver, please refer to below steps. (As you uninstall the utility, the driver will be uninstalled as well.)

1. Go to **Start → (All) Programs → 802.11b/g Wireless Mini PCI Card Utility → Uninstall.**



2. Click **OK** to complete remove the selected application and all of its features.



3. Click **Finish** to complete the uninstalled procedure.

