

802.11b/g  
Wireless MiniPCI Card

**User's Manual**

# REGULATORY STATEMENTS

## FCC Certification

The United States Federal Communication Commission (FCC) and the Canadian Department of Communications have established certain rules governing the use of electronic equipment.

### Part15, Class B

Warning: Changes or modifications to this unit not expressly approved by the party responsible for compliance could void the user authority to operate the equipment.

This device complies with Part 15 of FCC rules. Operation is subject to the following two conditions:

- 1) This device may not cause harmful interface, and
- 2) This device must accept any interface received, including interface that may cause undesired operation.

This equipment has been tested and found to comply with the limits for a Class B digital device, pursuant to Part 15 of the FCC Rules. These limits are designed to provide reasonable protection against harmful interference in a residential installation. This equipment generates, uses and can radiate radio frequency energy, and if not installed and used in accordance with the instructions, may cause harmful interference to radio communications. However, there is no guarantee that interference will not occur in a particular installation. If this equipment does cause harmful interference to radio or television reception, which can be determined by turning off and on, the user is encouraged to try to correct the interference by one or more of the following measures:

- ⌵ Reorient or relocate the receiving antenna.
- ⌵ Increase the distance between the equipment and receiver.
- ⌵ Connect the equipment into an outlet on a circuit different from that to which the receiver is needed.
- ⌵ Consult the dealer or an experienced radio/TV technician for help.

### CAUTION:

- 1) To comply with FCC RF exposure compliance requirements, a separation distance of at least 20 cm must be maintained between the antenna of this device and all persons.

- 2) This transmitter must not be co-located or operating in conjunction with any other antenna or transmitter.

**This device is intended only for OEM integrators under the following conditions:**

- 1) The antenna must be installed such that 20 cm is maintained between the antenna and users. For laptop installations, the antenna must be installed to ensure that the proper spacing is maintained in the event the users places the device in their lap during use (i.e. positioning of antennas must be placed in the upper portion of the LCD panel only to ensure 20 cm will be maintained if the user places the device in their lap for use) and

- 2) The transmitter module may not be co-located with any other transmitter or antenna.

As long as the 2 conditions above are met, further transmitter testing will not be required. However, the OEM integrator is still responsible for testing their end-product for any additional compliance requirements required with this module installed (for example, digital device emissions, PC peripheral requirements, etc.).

**IMPORTANT NOTE:** In the event that these conditions can not be met (for example certain laptop configurations or co-location with another transmitter), then the FCC authorization is no longer considered valid and the FCC ID can not be used on the final product. In these circumstances, the OEM integrator will be responsible for re-evaluating the end product (including the transmitter) and obtaining a separate FCC authorization.

End Product Labeling

This transmitter module is authorized only for use in devices where the antenna may be installed such that 20 cm may be maintained between the antenna and users (for example access points, routers, wireless ASDL modems, certain laptop configurations, and similar equipment). The final end product must be labeled in a visible area with the following: "Contains TX FCC ID: MQ4WMG2K6".

RF Exposure Manual Information That Must be Included

The users manual for end users must include the following information in a prominent location "IMPORTANT NOTE: To comply with FCC RF exposure compliance requirements, the antenna used for this transmitter must be installed to provide a separation distance of at least 20 cm from all persons and must not be co-located or operating in conjunction with any other antenna or transmitter."

Additional Information That Must be Provided to OEM Integrators

The end user should NOT be provided any instructions on how to remove or install the device.

# Table of Contents

|                                    |           |
|------------------------------------|-----------|
| <b>INTRODUCTION</b> .....          | <b>1</b>  |
| WIRELESS NETWORK OPTIONS .....     | 1         |
| The Peer-to-Peer Network.....      | 1         |
| The Access Point Network.....      | 2         |
| <b>INSTALLATION</b> .....          | <b>3</b>  |
| INSTALL THE DRIVER & UTILITY ..... | 3         |
| INSTALL THE DEVICE.....            | 6         |
| Note for Windows 98 users: .....   | 6         |
| Note for Windows 2000 users: ..... | 6         |
| Note for Windows XP users: .....   | 7         |
| Verify Device Installation .....   | 8         |
| <b>NETWORK CONNECTION</b> .....    | <b>10</b> |
| IN WINDOWS 98/ME.....              | 10        |
| IN WINDOWS 2000/XP .....           | 13        |
| <b>HARDWARE INSTALLATION</b> ..... | <b>16</b> |

## INTRODUCTION

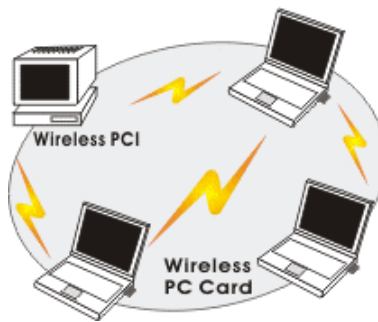
The **802.11b/g Wireless Mini PCI Card** is a device that allows you connect your computer to a wireless local area network (LAN). A wireless LAN allows your system to use wireless Radio Frequency (RF) technology to transmit and receive data without having to physically attach to the network. The Wireless protocols that come with this product ensure data security and isolation from interference generated by other radio frequencies.

This card also allows you to take full advantage of your computer's mobility with access to real-time information and online services anytime and anywhere. In addition, this device eliminates the bother of pulling cable through walls and under furniture. It even allows you to place your system in locations where cabling is impossible. Modifying and augmenting networks has never been so easy.

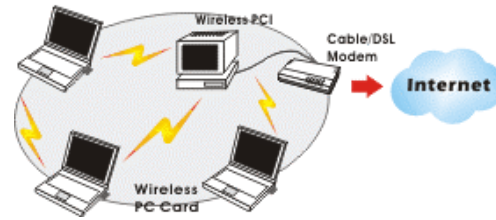
### Wireless Network Options

#### The Peer-to-Peer Network

This network installation lets you set a small wireless workgroup easily and quickly. Equipped with wireless mini-PCI, you can share files and printers between each PC and laptop.

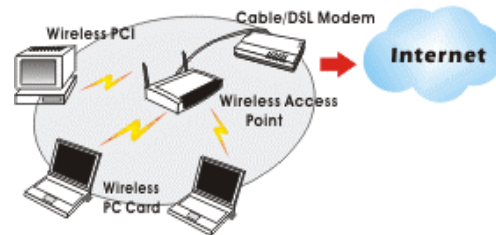


You can also use one computer as an Internet Server to connect to a wired global network and share files and information with other computers via a wireless LAN.



### The Access Point Network

The network installation allows you to share files, printers, and Internet access much more conveniently. With Wireless LAN Cards, you can connect wireless LAN to a wired global network via an **Access Point**.

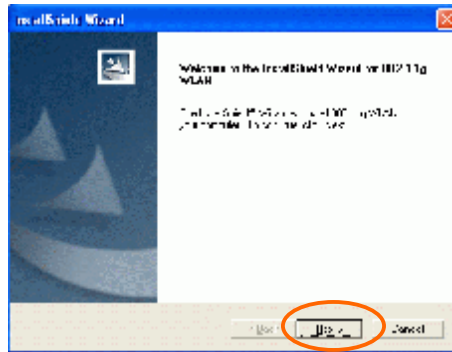


# INSTALLATION

**Caution:** Do not insert the **Wireless Mini PCI Card** into your computer until the procedures in “**Install the Driver & Utility**” has been performed.

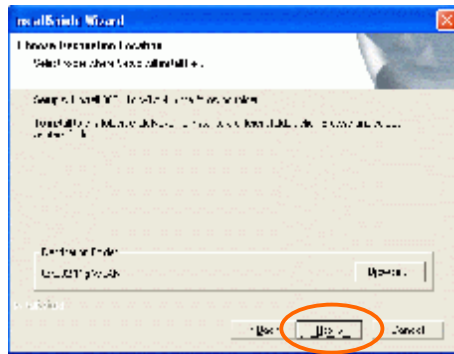
## Install the Driver & Utility

3. Exit all Windows programs. Insert the CD-ROM into the CD-ROM drive of your computer.  
If the CD-ROM is not launched automatically, go to your CD-ROM drive (e.g. drive D) and double-click on **Setup.exe**.
4. The main screen of the CD-ROM opens. Click **Install Driver & Utility** to start the installation.
5. When the Welcome screen appears, click **Next** to continue.

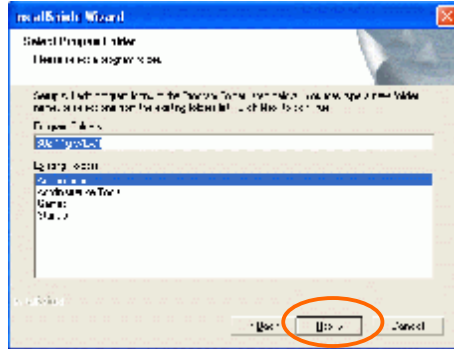


6. The **Choose Destination Location** screen will show you the default destination chosen by the utility. Click **Next** to continue.

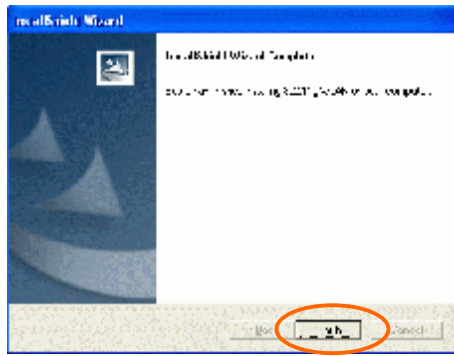




7. Follow the instruction to select the program folder. Click **Next** to continue.



8. Click **Finish** to complete the installation



## Install the device<sup>1</sup>

**Note:** Make sure the procedures in “**Install the Driver & Utility**” has been performed.

1. Locate your Mini PCI slot.
2. Carefully slide the Wireless Mini PCI Card into the mini PCI slot. Push evenly and slowly and ensure it is properly seated.
3. After the device has been connected to your computer, turn on your computer. Windows will detect the new hardware and then automatically copy all of the files needed for networking. Recover your expansion slot cover if you are using the Wireless PCI Card.

### **Note for Windows 98 users:**

Before installation of the device, make sure you have your operating system CD-ROM at hand. You may be asked to insert the OS CD-ROM in order to download specific drivers.

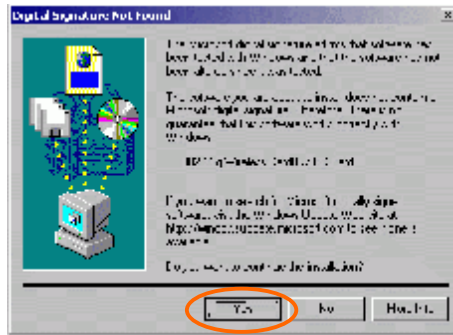


### **Note for Windows 2000 users:**

During the installation, when the “**Digital Signature Not Found**” screen appears, click “**Yes**” to continue.

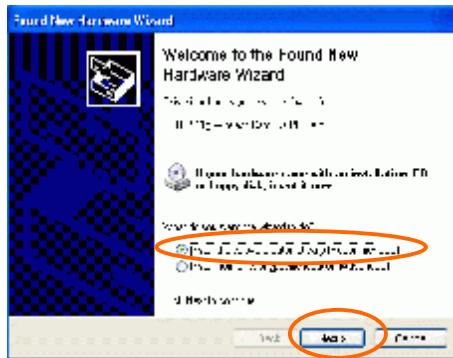
---

<sup>1</sup> The product descriptions shown on the screen will differ from the illustrations shown in this document. Please discard the discrepancy and follow the installation procedures to continue anyway.

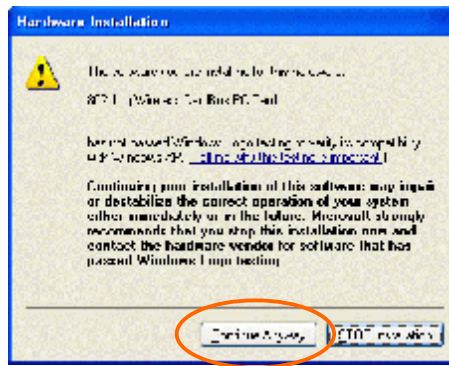


**Note for Windows XP users:**

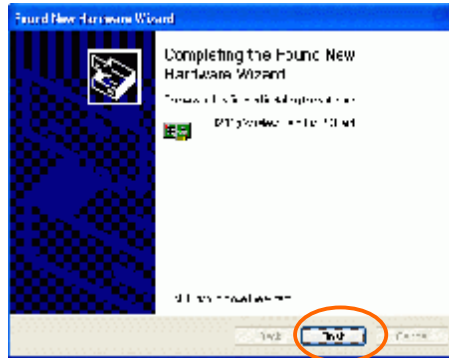
1. Select **Install the software automatically (Recommended)** and click **Next**.



3. Click **Continue Anyway**.

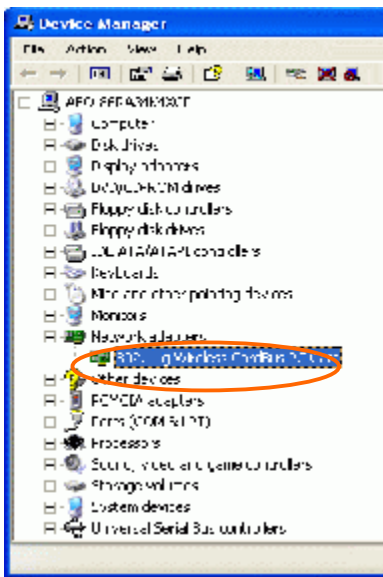


4. Click **Finish** to complete the installation.



#### Verify Device Installation

To verify that the device has been properly installed in your computer and is enabled, go to **Start à Settings à Control Panel à System (à Hardware) à Device Manager**. Expand the **Network adapters** item. If the **802.11g Wireless LAN PC Card** is listed, it means that your device is properly installed and enabled.

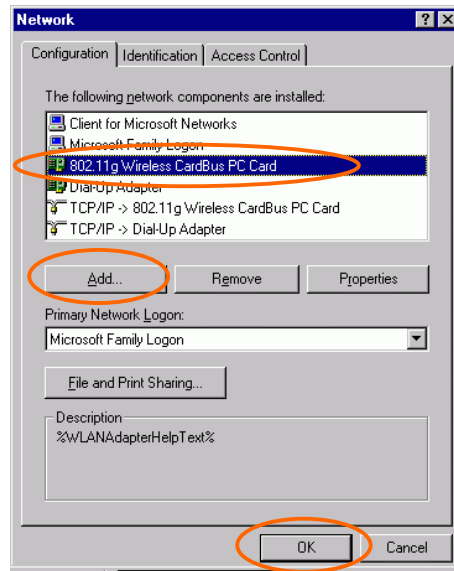


# NETWORK CONNECTION

Once the driver has been installed, you will need to make adjustments to your network settings.

## In Windows 98/ME

1. Go to **Start à Settings à Control Panel à Network**.
2. Make sure that you have all the following components installed.



§ 802.11g Wireless LAN PC Card

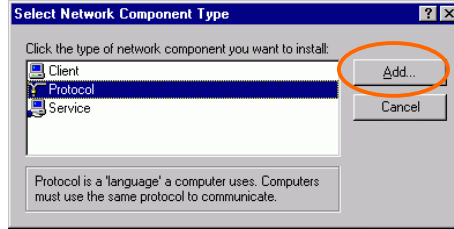
§ IPX/SPX-compatible Protocol

§ NetBEUI

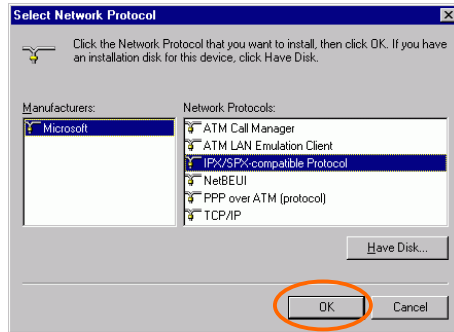
§ TCP/IP

If any components are missing, click on the **Add** button to install them. All of the protocols and clients required (listed above) are provided by Microsoft.

3. Next, highlight the specific network component you need, click **Add**.



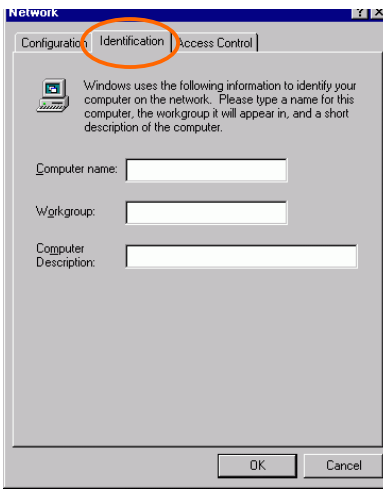
4. Highlight **Microsoft**, and then double click on the item you want to add. Click **OK**.



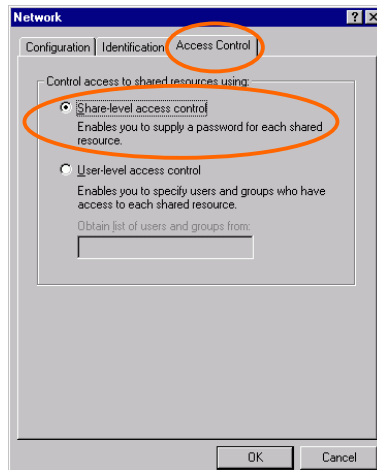
After returning to the Network screen, you can make your computer is visible on the network by enabling the **File and Print Sharing**.

5. Click the **Identification** tab. Enter a name that is unique on the network. Type the name of your workgroup, which should be the same name used by all of the other PCs on the network.

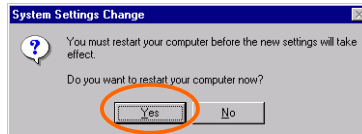




6. Click the **Access Control** tab. Make sure that “**Share-level access control**” is selected. If connecting to a Netware server, share level can be set to “**User-level access control.**”



- When finished, restart your computer to activate the new device.



- Once the computer has been rebooted, a **Logon** window will appear and will require you to enter a username and password. Enter a username and password and click **OK**. Do not click the **Cancel** button, or you won't be able to log onto the network.
- Double-click the **Network Neighborhood** icon on the windows desktop, and you should see the names of the other PCs on the network.

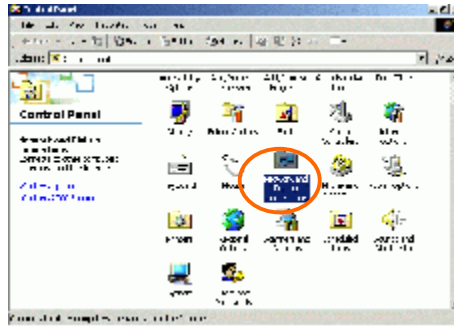
## In Windows 2000/XP

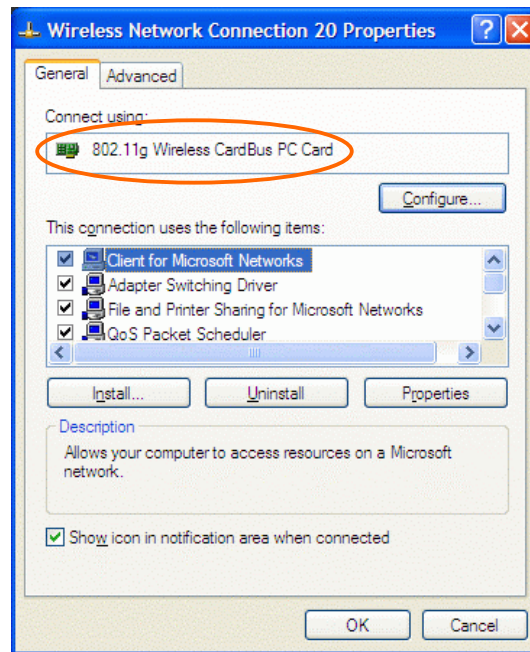
- (In Windows 2000)

Go to **Start à Settings à Control Panel à Network and Dial-up Connections à Local Area Connection à Properties**.

(In Windows XP)

Go to **Start à Control Panel à Network Connections à Wireless Network Connection Enabled 802.11g Wireless LAN PC Card à Properties**.





2. Make sure that you have all the following components installed.

§ **Client for Microsoft Networks**

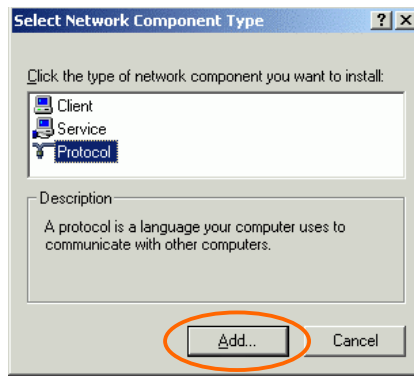
§ **NWLink NetBIOS**

§ **NWLink IPX/SPX/NetBIOS Compatible Transport Protocol**

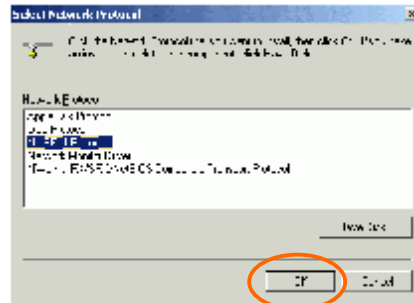
§ **Internet Protocol (TCP/IP)**

If any components are missing, click on the **Install...** button to select the **Client/Service/Protocol** required.

3. After selecting the component you need, click **Add...** to install.



4. Select the network protocol you wish to add and click **OK**. This will return you to the **Local Area Connections Properties** window.



5. To allow your computer to be visible on the network, make sure you have checked off the **File and Printer Sharing for Microsoft Networks**.
6. When finished, you must restart your computer to complete the installation.

## Hardware Installation

### Installation for Hub Manufacturer

Align the 802.11b/g Wireless Mini PCI Card toward the Mini PCI slot of Hub.  
Push evenly and steadily until it is seated.

