

**802.11b**  
**Wireless & Fast**  
**Ethernet**  
**USB Adapter**

User Guide

Doc. No.: 071202-01

## REGULATORY STATEMENTS

### FCC Certification

The United States Federal Communication Commission (FCC) and the Canadian Department of Communications have established certain rules governing the use of electronic equipment.

#### Part15, Class B

This model 802.11b Wireless & Fast Ethernet USB Adapter (WUE1500) must be installed and used in strict accordance with the manufacturer's instructions as described in the user documentation that comes with the product.

This device complies with Part 15 of FCC rules. Operation is subject to the following two conditions:

- 1) This device may not cause harmful interface, and
- 2) This device must accept any interface received, including interface that may cause undesired operation. This equipment has been tested and found to comply with the limits for a Class B digital device, pursuant to Part 15 of the FCC Rules. These limits are designed to provide reasonable protection against harmful interference in a residential installation. This equipment generates, uses and can radiate radio frequency energy, and if not installed and used in accordance with the instructions, may cause harmful interference to radio communications. However, there is no guarantee that interference will not occur in a particular installation. If this equipment does cause harmful interference to radio or television reception, which can be determined by turning off and on, the user is encouraged to try to correct the interference by one or more of the following measures:
  - ▶ Reorient or relocate the receiving antenna.
  - ▶ Increase the distance between the equipment and receiver.
  - ▶ Connect the equipment into an outlet on a circuit different from that to which the receiver is connected.



Warning: Changes or modifications not expressly approved by party responsible for compliance could void the user the user authority to operate the equipment



**CAUTION:**

- 1) To comply with FCC RF exposure compliance requirements, a separation distance of at least 20 cm must be maintained between the antenna of this device and all persons.
- 2) This transmitter must not be co-located or operating in conjunction with any other antenna or transmitter.

**Technical Support**

*AboCom Systems, Inc.*

*300 1F, No.21, R&D Rd.II, SBIP, Hsin-Chu, Taiwan , R.O.C.*

*Head office :*

*Tel: 886-3-5789090*

*Fax:886-3-5789520*

*Technical Support:*

*Tel: 0800-079-123*

***E-Mail: support@abocom.com.tw***

*Website: www.abocom.com.tw*

**U.S Service Center:**

D-LINK CORPORATION

53 DISCOVERY DRIVE, IRVINE CA 92618, USA

TEL: 714-788-0805

# Table of Contents

<b>INTRODUCTION .....</b>	<b>1</b>
FEATURES .....	2
<b>SOFTWARE INSTALLATION.....</b>	<b>3</b>
INSTALLATION THE UTILITY UNDER WINDOWS 98SE/ME/2000 .....	3
<b>HARDWARE INSTALLATION .....</b>	<b>7</b>
INSTALLATION OF THE USB ADAPTER FOR WINDOWS 98SE/ME/2000 7	
Manually .....	7
Automatically .....	8
Under Windows 98SE .....	8
Under Windows ME .....	9
Under Windows 2000 .....	10
INSTALLATION OF THE USB ADAPTER FOR WINDOWS XP .....	11
<b>NETWORK CONNECTION .....</b>	<b>16</b>
CONFIGURING THE NETWORK PROTOCOLS FOR WINDOWS 98SE/ME .	16
CONFIGURING THE NETWORK PROTOCOLS FOR WINDOWS 2000.....	20
USB 10/100 Network Adapter.....	20
Wireless USB Adapter.....	23

CONFIGURING THE NETWORK PROTOCOLS FOR WINDOWS XP.....	24
USB 10/100 Network Adapter.....	24
Wireless USB Adapter.....	26
<b>CONFIGURATION PROCEDURE .....</b>	<b>27</b>
CONFIGURATION AND MONITOR UTILITY FOR WINDOWS	
98SE/ME/2000 .....	27
CONFIGURATION FOR WINDOWS XP .....	39
USB 10/100 Network Adapter.....	39
Wireless USB Adapter.....	41
<b>UNINSTALL PROCEDURE.....</b>	<b>47</b>
UNINSTALL PROCEDURE UNDER WINDOWS 98SE/ME/2000 .....	47
Uninstall the Configuration Utility .....	47
Uninstall the device .....	49
Under Windows 98SE/ME .....	49
Under Windows 2000 .....	50
UNINSTALL PROCEDURE UNDER WINDOWS XP .....	53
Uninstall the driver .....	53
USB 10/100 Network Adapter.....	53
Wireless USB Adapter.....	56
Uninstall the device .....	57
USB 10/100 Network Adapter.....	57

Wireless USB Adapter.....	58
<b>SPECIFICATIONS .....</b>	<b>60</b>
Wireless.....	60
LAN.....	61

## **Introduction**

**The 802.11b Wireless & Fast Ethernet USB Adapter** is the multifunction device for your wireless network applications and based on the IEEE 802.11b standard offering a data rate of 11Mbps in a wireless LAN environment and 10/100Mbps traditional network. It is a high-speed wireless network device that plugs into your notebook or desktop PC and accesses to the LAN or peer-to-peer networking easily without wires or cables. Besides, this device allows you to connect the traditional 10/100 Mbps network via the RJ-45 port. Whether you're at your desk or in the boardroom, it allows you to share printers, files, and other network resources via wireless LAN or Fast Ethernet network.

The USB adapter designed to be inserted into a USB type A port of a laptop or desktop computer creating a wireless or LAN workstation. With the tightly integrated wireless LAN and LAN networking, the users do not need to juggle multiple cards for concurrent use of wireless LAN and LAN, it is greatly improvement of the wireless and LAN and gets the real convenience.

## Features

- ✧ Complies with IEEE802.11b standard for 2.4GHz Wireless LAN
- ✧ Dual-speed RJ-45 port auto-negotiation 10BaseT/100BaseTX
- ✧ USB 1.1 compliant
- ✧ USB Plug & Play
- ✧ Interoperable with existing network infrastructure
- ✧ Secure information transmission
- ✧ Freedom to roam while staying connected
- ✧ Compatible with specialty wireless products and services
- ✧ Up to 11Mbps data rate
- ✧ Support operating systems such as Window 98SE/2000/ME/XP
- ✧ Lower power consumption
- ✧ Easy of Installation
- ✧ High-power Bus-power no external power is required



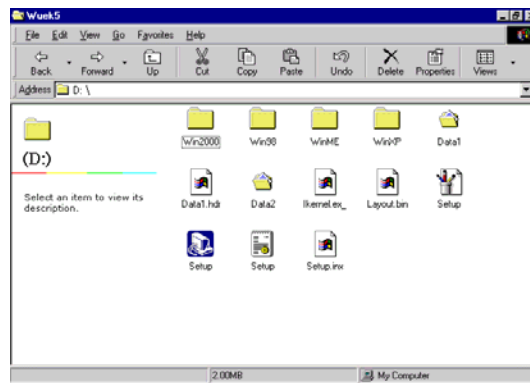
## Software Installation

**Precaution for Windows 98SE, 2000, and ME users:** Please install the Adapter's software before installing the hardware for saving your time.

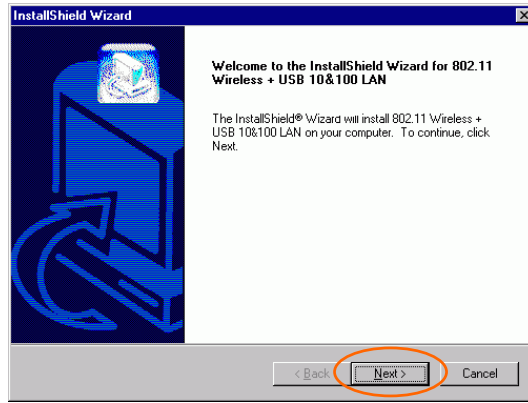
**Precaution for Windows XP users:** It's not necessary to install the utility, since the device will use the built-in utility in Windows XP.

### Installation the Utility under Windows 98SE/ME/2000

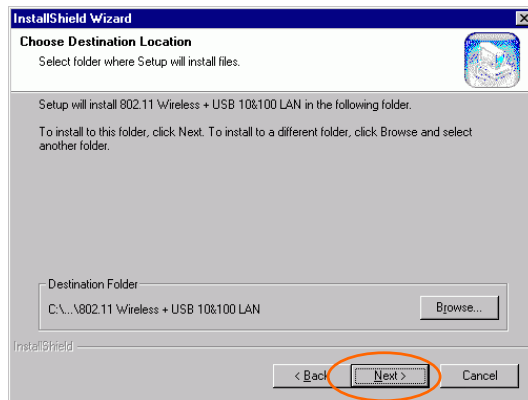
1. Insert the **Setup Utility CD-ROM** into the CD-ROM drive and double click on **Setup.exe** to install the Configuration & Monitor Utility.



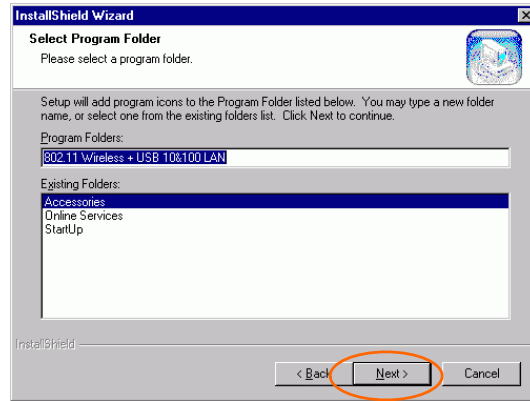
2. When the Welcome screen appears, click **Next** to continue.



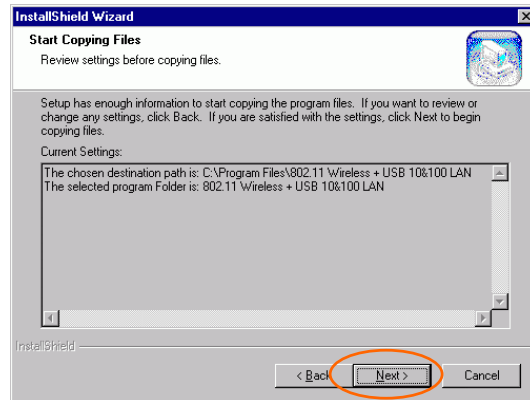
3. The **Choose Destination Location** screen will show you the default destination chosen by the utility. Click **Next** to continue.



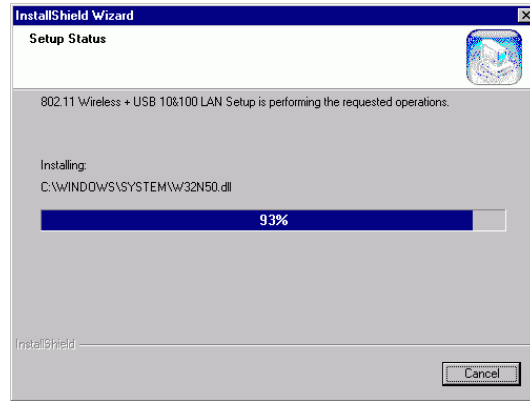
4. Follow the instruction to select the program folder. Click **Next** to continue.



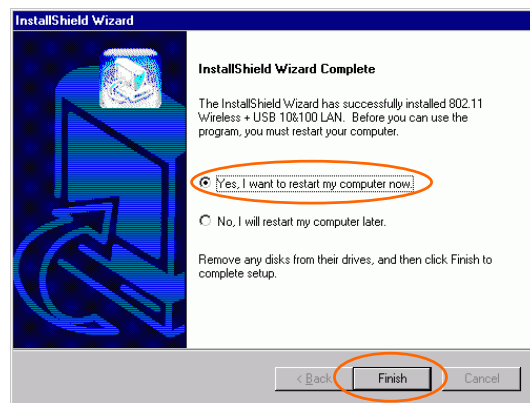
5. In **Start Copying Files**, click **Next** to continue.



6. In **Setup Status**, the InstallShield Wizard will begin copying the files.



7. After the Configuration Utility has been successfully installed, select **Yes, I want to restart my computer now**, and then click **Finish** to restart.



## Hardware Installation

### Installation of the USB Adapter for Windows 98SE/ME/2000

#### Automatically

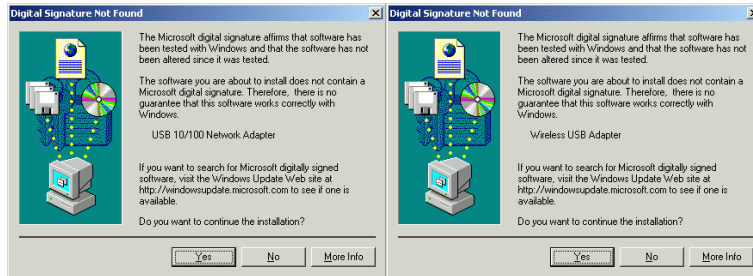
**Precaution for Windows 98SE, 2000, and ME users:** If the Application setup in [Installation the Utility under Windows98SE/ME/2000](#) has been completed, follow below steps to install the hardware.

**For Windows 98SE users:** As you perform the installation, have your system operating CD-ROM at hand. You may be asked to insert the OS CD-ROM for the system to download a specific driver.

1. Plug the square end (**Type B**) of USB cable into the adapter's USB port.
2. Plug the rectangle end (**Type A**) of USB cable into the PC's USB port.
3. Insert one end of your network cable into the RJ-45 network port. Connect the other end of the cable into a Hub.

After the device has been connected to your computer, Windows will detect the new hardware and then automatically copy all of the files needed for networking.

**Precaution for Windows 2000 users:** When **Digital Signature Not Found** screen appears, click **Yes** to continue.



## Manually

**If you want to install the Hardware before installing the utility, please follow the below section.**

### Under Windows 98SE

1. In **Add New Hardware Wizard**, click **Next**.
2. Click **Search for the best driver for your device (Recommended)**.
3. Insert the device driver CD-ROM into the CD-ROM drive. Select **Specify a location:** and click **Browse** to provide the appropriate path (e.g. D:\Win98). Click **Next**.



4. Click **Next**, Windows will copy all the necessary files to your system.
5. Insert **Windows 98SE** CD-ROM.



6. Click **Finish** to continue.
7. When Windows prompts you to restart your computer, click **No**.
8. Repeat step 1-6.
9. When Windows prompts you to restart your computer, click **Yes**.

Then go to [Installation the Utility under Windows98SE/ME/2000](#) section for installing the utility.

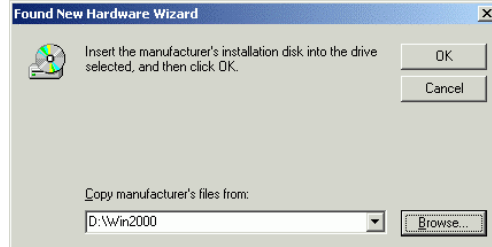
#### **Under Windows ME**

1. Select **Specify the location of the driver (Advanced)**, click **Next**.
2. Insert the device driver CD-ROM into the CD-ROM drive. Select **Search for the best driver for your device (Recommended)** and click **Browse** to provide the appropriate path (e.g. D:\WinME). Click **Next**.
3. Click **Next**, Windows will copy all the necessary files to your system.
4. Click **Finish** to continue.
5. When Windows prompts you to restart your computer, click **No**.
6. Repeat step 1-4.
7. When Windows prompts you to restart your computer, click **Yes**.

Then go to [Installation the Utility under Windows98SE/ME/2000](#) section for installing the utility.

## Under Windows 2000

1. In **Found New Hardware Wizard**, click **Next**.
2. In **Install Hardware Device drivers**, click **Search for a suitable driver for my device (Recommended)**.
3. Insert the device driver CD-ROM into the CD-ROM drive. Select **CD-ROM drivers** and **Specify a location**.
4. Click **Browse** to provide the appropriate path (e.g. D:\Win2000). Click **OK**.



5. Click **Next**, Windows will copy all the necessary files to your system.
6. Click **Yes** to continue the installation.
7. Click **Finish** to continue.
8. Repeat step 1-6.
9. Click **Finish**.
10. Restart your computer.

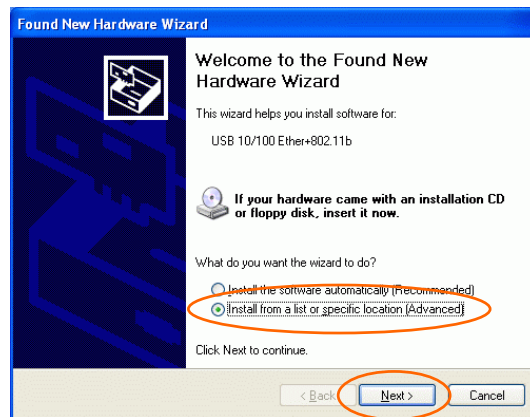
Then go to [Installation the Utility under Windows98SE/ME/2000](#) section for installing the utility.

**Precaution for Windows XP users:** You must install the Adapter's hardware, and then go to [Installation of the USB Adapter for Windows XP](#).

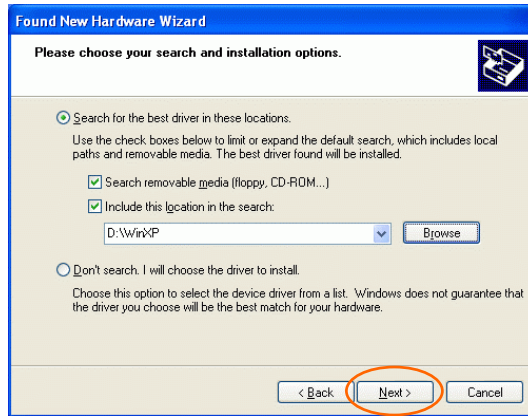


## Installation of the USB Adapter for Windows XP

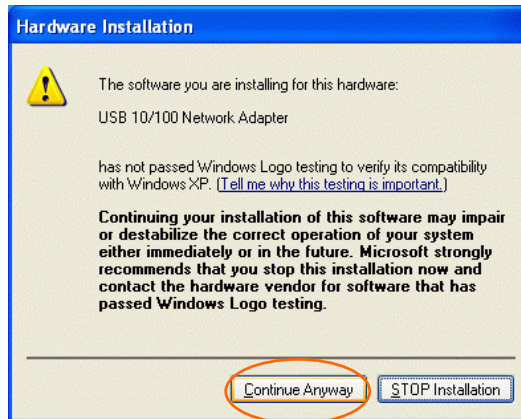
1. Once the device is well connected to your computer, Windows XP will automatically detect the new device. Click **Install from a list...** and click **Next**.



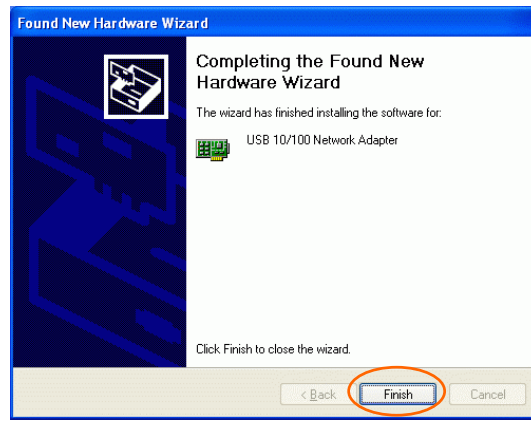
2. Insert the **Setup Utility CD-ROM** into the CD-ROM drive. Select **Include this location in the search:** and click **Browse** to provide the appropriate path (e.g. **D:\WinXP**). Click **Next**.



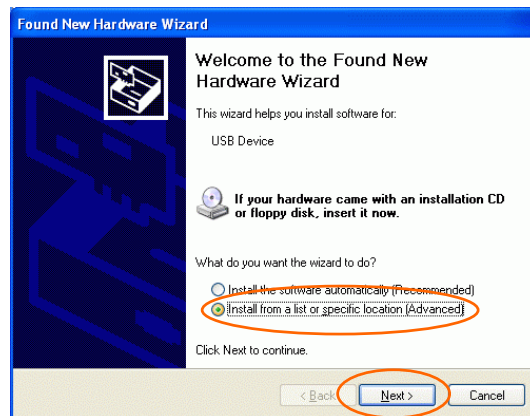
3. Click **Continue Anyway** to proceed.



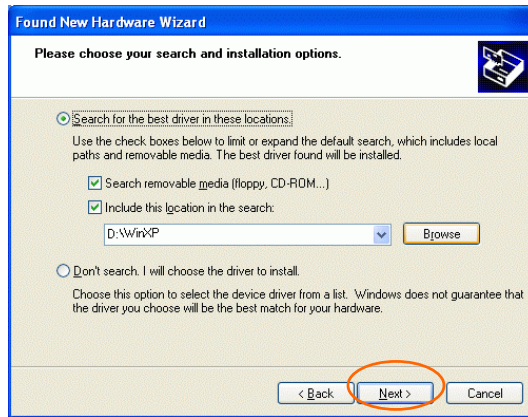
4. Click **Finish** to continue the Utility installation.



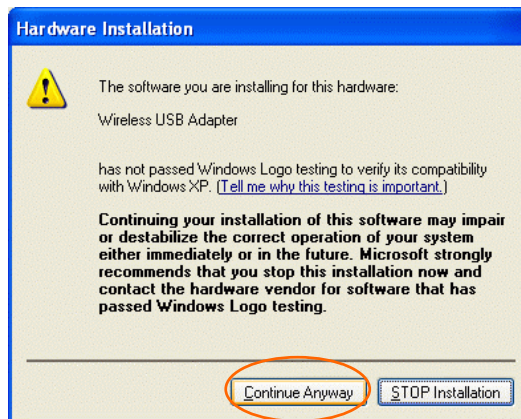
5. Wait for seconds. Windows XP will automatically detect the new hardware. Click **Install from a list or specific location (Advanced)** and click **Next**.



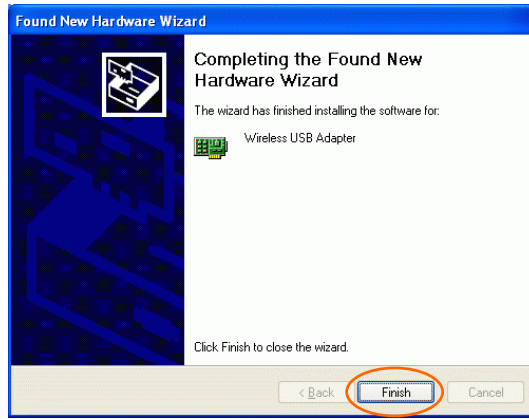
6. Select **Include this location in the search:** and click **Browse** to provide the appropriate path (e.g. **D:\WinXP**). Click **Next**.



7. Click **Continue Anyway** to proceed.



8. Click **Finish** to complete the Utility installation.

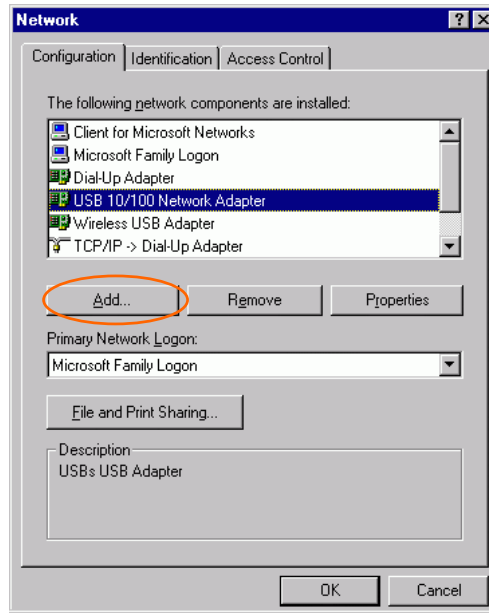


## Network Connection

Once the driver has been installed, you must make some changes to your network settings.

### Configuring the Network Protocols for Windows 98SE/ME

1. Go to **Start → Settings → Control Panel → Network**.
2. Make sure that you have all the following components installed.

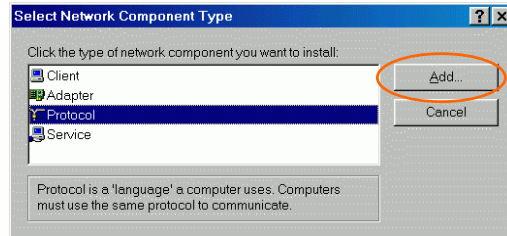


- **USB 10/100 Network Adapter**
- **Wireless USB Adapter**

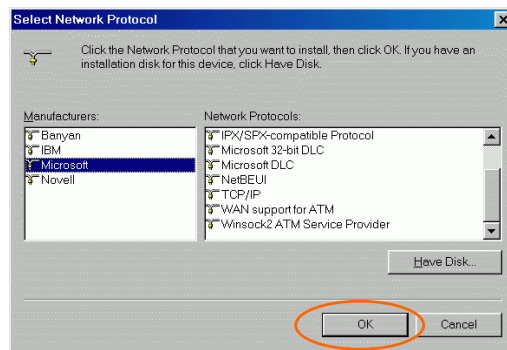
- **IPX/SPX-compatible Protocol**
- **NetBEUI**
- **TCP/IP**

If any components are missing, click on the **Add** button to add them in. All the protocols and clients required listed above are provided by Microsoft.

3. After clicking **Add**, highlight the component you need, click **Add**.

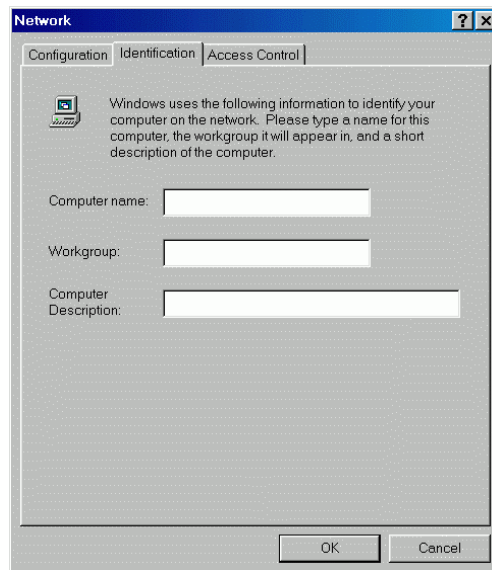


4. Highlight **Microsoft**, and then double click on the item you want to add. Click **OK**.



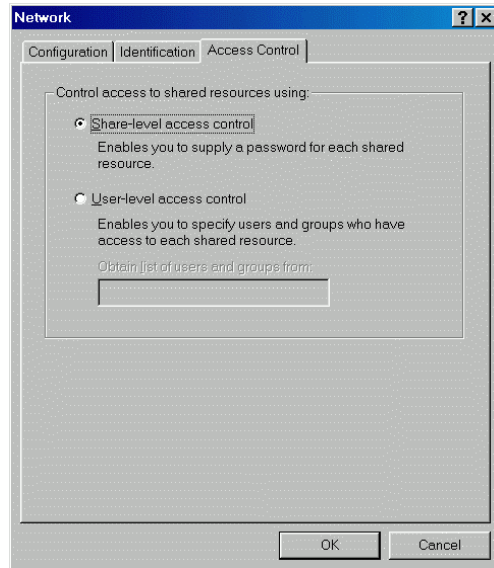
5. For making your computer visible on the network, enable the **File and Printer Sharing**.

6. Click the **Identification** tab. Make up a name that is unique from the other computers' names on the network. Type the name of your workgroup, which should be the same used by all of the other PCs on the network.



7. Click the **Access Control** tab. Make sure that "**Shared-level access control**" is selected. If connecting to a Netware server, share level can be set to "**User-level access control.**"



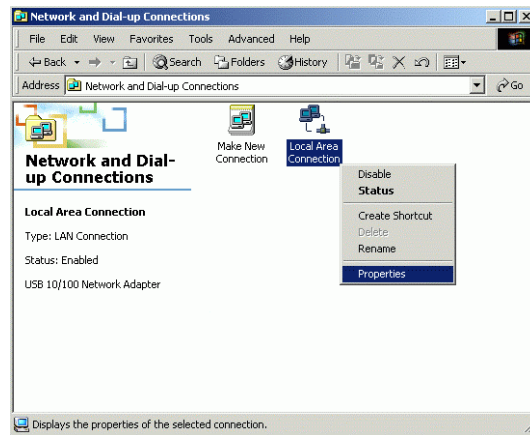


8. When finished, reboot your computer to activate the new device.
9. Once the computer has restarted and Windows has booted up, a **Logon** window will appear and require you to enter a username and password. Make up a username and password and click **OK**. Do not click the **Cancel** button, or you won't be able to log onto the network.
10. Double-click the **Network Neighbourhood** icon on the Windows desktop, and you should see the names of the other PCs on the network.

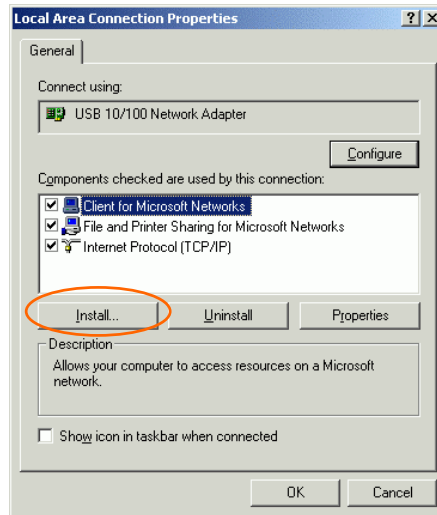
# Configuring the Network Protocols for Windows 2000

## USB 10/100 Network Adapter

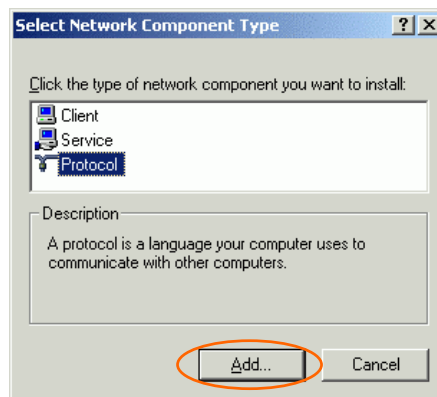
1. Go to **Start** → **Settings** → **Control Panel** → **Network and Dial-up Connections** → **Local Area Connection** → **Properties**.

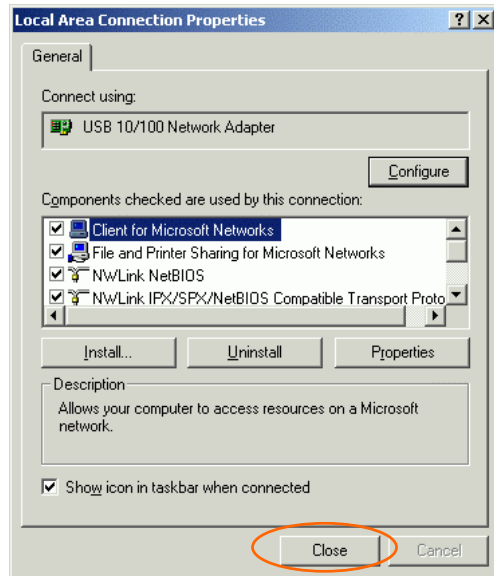
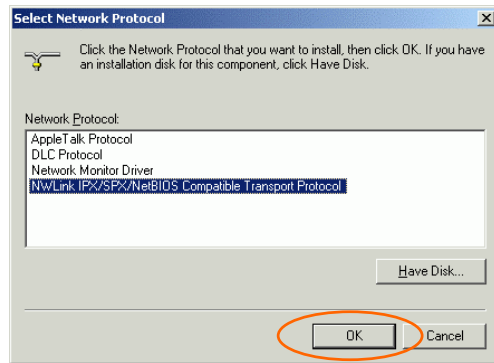


2. Make sure that you have all the following components installed.
  - **Client for Microsoft Networks**
  - **NWLink NetBIOS**
  - **NWLink IPX/SPX/NetBIOS Compatible Transport Protocol**
  - **Internet Protocol (TCP/IP)**



3. If any components are missing, click on the **Install...** button to select the **Client/Service/Protocol** required. After selecting the component you need, click **Add...** to add it in.



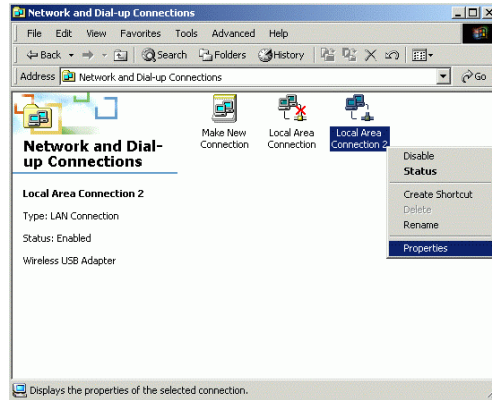


4. For making your computer visible on the network, make sure you have installed **File and Printer Sharing for Microsoft Networks**.

5. When finished, you must restart your computer to complete installation.

## Wireless USB Adapter

1. Go to **Start** → **Settings** → **Control Panel** → **Network and Dial-up Connections** → **Local Area Connection 2** → **Properties**.

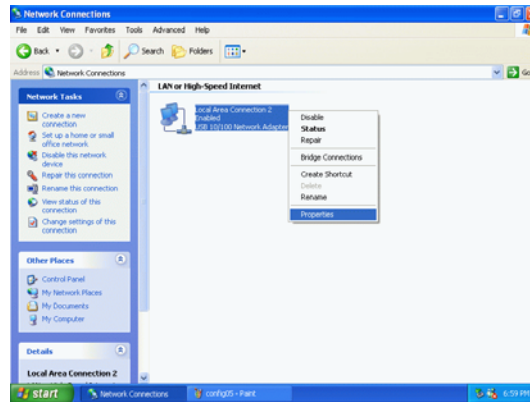


2. Repeat step 2-5 in previous section. ([USB 10/100 Network Adapter](#))

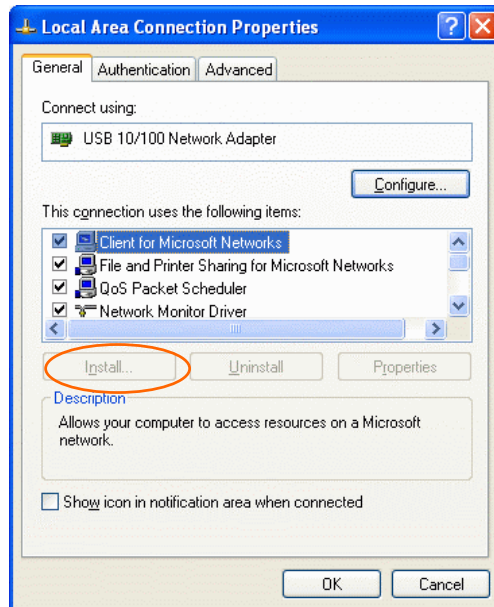
# Configuring the Network Protocols for Windows XP

## USB 10/100 Network Adapter

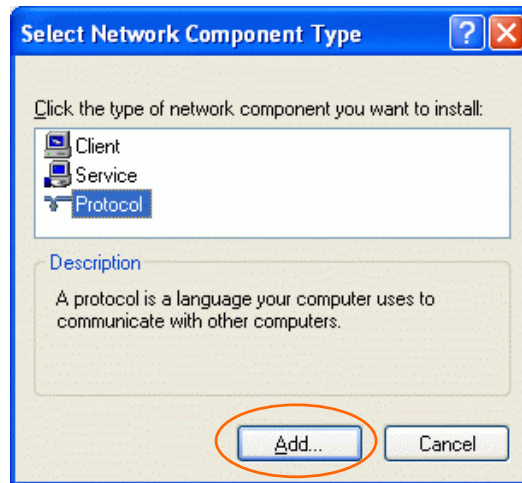
1. Go to **Start** → **Control Panel** → **Network and Internet Connections** → **Network Connections** → **Local Area Connection Enabled USB 10/100 Network Adapter** → **Properties**.



2. Make sure that you have all the following components installed.
  - **Client for Microsoft Networks**
  - **NWLink NetBIOS**
  - **NWLink IPX/SPX/NetBIOS Compatible Transport Protocol**
  - **Internet Protocol (TCP/IP)**



3. If any components are missing, click on the **Install...** button to select the **Client/Service/Protocol** required. After selecting the component you need, click **Add...** to add it in.



4. For making your computer visible on the network, make sure you have installed **File and Printer Sharing for Microsoft Networks**.
5. When finished, you must restart your computer to complete installation.

### **Wireless USB Adapter**

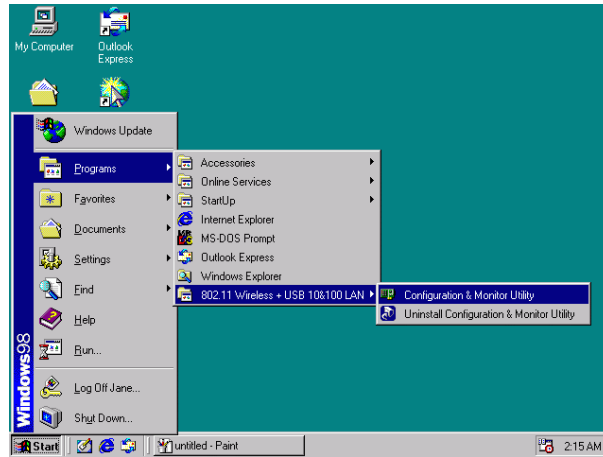
1. Go to **Start → Control Panel → Network and Internet Connections → Network Connections → Local Area Connection Enabled Wireless USB Adapter → Properties**
2. Repeat Step 2-5 in previous section. ([USB 10/100 Network Adapter](#))



## Configuration Procedure

### Configuration and Monitor Utility for Windows 98SE/ME/2000





After installing the device successfully, go to **Start** → **Programs** → **802.11 Wireless + USB 10&100 LAN** → **Configuration and Monitor Utility**.



The **Wireless LAN Monitor Utility** icon will appear in the taskbar every time the device is running. You can open it by double-clicking on this icon.



## Icon Status

Mode	Icon	Link Status
Access Point mode		<b>Red.</b> The station is not associated to an Access Point.
		<b>Blue.</b> The station associates itself to an Access Point.
Peer-to-Peer mode		<b>Red.</b> The color is red only when the card is during resetting and initialization procedure.
		<b>Blue.</b> Peer-to-Peer mode is activated.

**Note:** Except for the following configuration utility, using Windows to configure the wireless network settings in the **Windows XP** is recommended. (Please skip to the [Configuration for Windows XP](#) section)

All settings are categorized into 6 tabs:

**Status**

**Statistics**

**Site Survey**

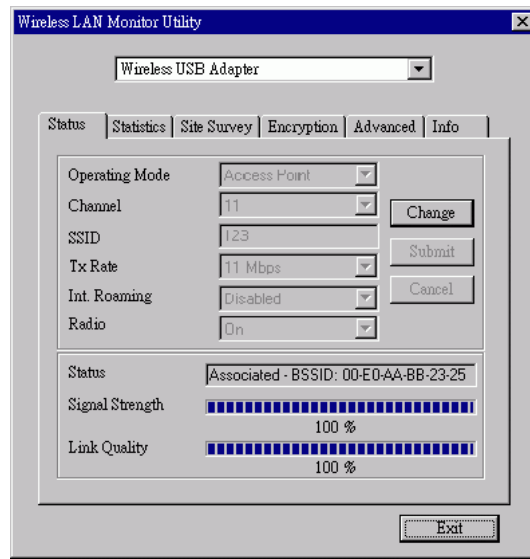
**Encryption**

**Advanced**

**Info**

## Status

The Status tab will display the current status of the Wireless USB Adapter.

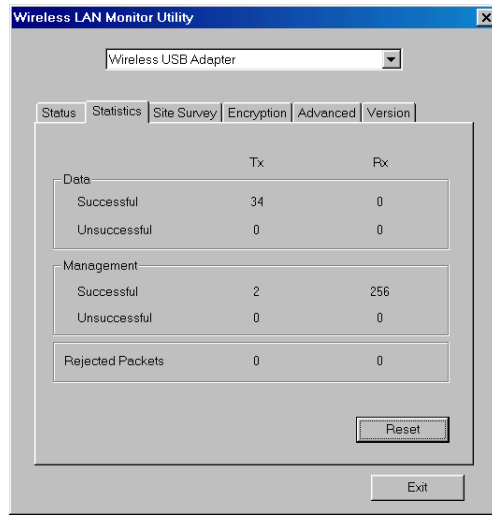


Item	Description
<b>Operating Mode</b>	It displays the current operating mode. ( <b>Access Point</b> or <b>Peer-to -Peer</b> ).
<b>Channel</b>	It shows the selected channel that is currently used. (There are 14 channels available, depends on the country.)
<b>SSID</b>	The <b>SSID</b> is the unique name shared among all points in your wireless network. The name must be identical for all devices and points attempting

<b>Item</b>	<b>Description</b>
	to connect to the same network. It shows the current SSID setting of the Wireless USB Adapter.
<b>Tx Rate</b>	It shows the current transfer rate. ( <b>1, 2, 5.5, or 11Mbps or Auto</b> )
<b>Int Roaming</b>	It displays the current roaming status. ( <b>Disabled or Enabled</b> )
<b>Radio</b>	It displays the current status of the Wireless USB Adapter. ( <b>On or Off</b> )
<b>Status</b>	It displays the information about the status of the communication (the BSSID of the Access Point to which the card is associated).
<b>Signal Strength</b>	It displays the signal strength of the connection between the Wireless USB Adapter and the Access Point it connects.
<b>Link Quality</b>	It displays the link quality of the connection between the Wireless USB Adapter and the Access Point it connects.
<b>Change</b>	Click <b>Change</b> to change the configuration parameters such as <b>Operating Mode, SSID, Tx Rate, and Int Roaming</b> . (In Peer-to-Peer mode, <b>Change</b> button is enabled).
<b>Submit</b>	Click <b>Submit</b> to save the changes.
<b>Cancel</b>	Click <b>Cancel</b> to ignore the previous setting.

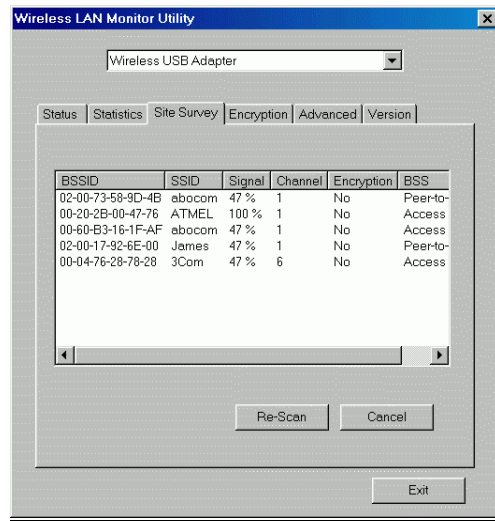
## Statistics

This option shows you to view the available statistic information (Data packets, Management Packets and Rejected packets). Press the Reset button to renew or update this list of statistics.



## Site Survey

The **Site Survey** tab shows all the available Access Points and their features.

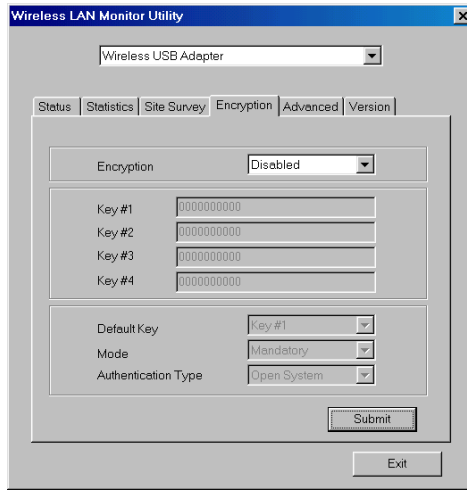


Item	Description
<b>BSSID</b>	A set of wireless stations is referred to as a Basic Service Set (BSS). Computers in a BSS must be configured with the same BSS ID.
<b>SSID</b>	The <b>SSID</b> is the unique name shared among all points in your wireless network.  The name must be identical for all devices and points attempting to connect to the same network.

<b>Item</b>	<b>Description</b>
<b>Signal</b>	It displays the signal strength of the connection between the Wireless USB Adapter and the Access Point it connects.
<b>Channel</b>	It shows the selected channel that is currently used.
<b>Encryption</b>	It displays the status of WEP Encryption.
<b>BSS</b>	It displays the type of Basic Service Set.  <b>Access Point:</b> allows the Adapter to communicate with a wired network which employing an Access Point.  <b>Peer-to-Peer:</b> allows PC-to-PC, station-to-station communication without employing an Access Point.
<b>Re-Scan</b>	Search for all available networks. Clicking on the button, the device will start to rescan and list all available sites.
<b>Cancel</b>	Click <b>Cancel</b> to ignore the previous setting. (Do not press <b>Cancel</b> while <b>Re-Scan</b> is working.)
<b>Exit</b>	Click <b>Exit</b> to exit the application.

## Encryption

**WEP (Wired Equivalent Privacy)** encryption can be used to ensure the security of your wireless network.



Item	Description
<b>Encryption</b>	<p><b>WEP</b> is a data privacy mechanism based on a 64-bit/128-bit shared key algorithm.</p> <p>Under the drop-down box, you can choose to have WEP encryption <b>Disabled</b>, <b>64 Bit</b>, or <b>128 Bit</b>.</p>
<b>Key1/Key2/ Key3/Key4</b>	<p>This setting is the configuration key used in accessing the wireless network via WEP encryption. To generate an encryption key:</p> <ol style="list-style-type: none"> <li>1. Select 64 Bit or 128 Bit.</li> <li>2. Click "Key1" or "Key2" or "Key3" or "key4" item, then fill in the appropriate value/phrase.</li> </ol>

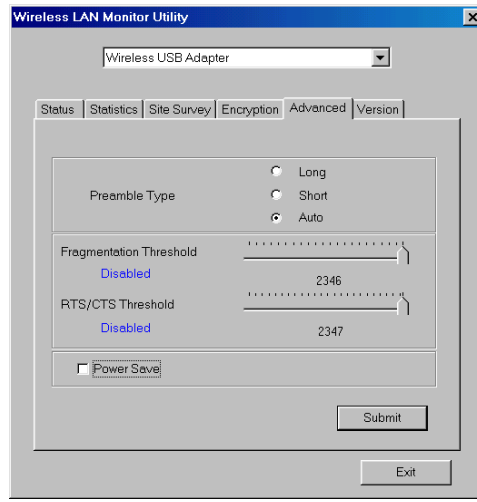


<b>Default Key</b>	You can specify up to 4 different keys to <i>decrypt</i> wireless data. Select the Default key setting from the pull-down menu.
<b>Mode</b>	Two WEP modes are available as below: <b>Mandatory</b> and <b>Optional</b> . <b>Mandatory:</b> WEP Encryption is required to establish connection with other stations within the wireless network. <b>Optional:</b> Your station can communicate with other stations within the wireless network regardless if they use WEP or not.
<b>Authentication Type</b>	The authentication type defines configuration options for the sharing of wireless networks to verify identity and access privileges of roaming wireless network cards. You may choose between <b>Open System</b> , <b>Shared Key</b> , and <b>Auto</b> . <b>Open System:</b> If the Access Point is using "Open System" authentication, then the wireless adapter will need to be set to the same authentication type. <b>Shared Key:</b> <b>Shared Key</b> is when both the sender and the recipient share a secret key. <b>Auto:</b> Select <b>Auto</b> for the USB adapter to select the Authentication type automatically depending on the Access Point Authentication type.
<b>Submit</b>	Click <b>Submit</b> to save the changes.
<b>Exit</b>	Click <b>Exit</b> to exit the application.

<b>Note:</b> You must use the same value/phrase or WEP key settings for all wireless computers in order for the wireless network to function well.
--

## Advanced

You can change advanced configuration settings, such as the Preamble Type, Fragmentation Threshold and RTS/CTS Threshold.

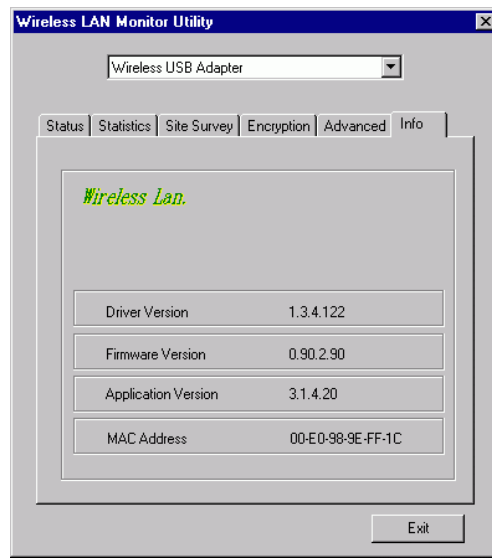


Item	Description
<p><b>Preamble Type</b></p> <p><input checked="" type="radio"/> <b>Long</b></p> <p><input checked="" type="radio"/> <b>Short</b></p>	<p>A preamble is a signal used in wireless environment to synchronize the transmitting timing including Synchronization and Start frame delimiter.</p> <p>If in a "noisy" network environment, the Preamble Type should be set to <b>Long</b>.</p> <p>The <b>Short</b> preamble is intended for applications where minimum overhead and maximum performance is desired. If in a "noisy" network environment, the performance would be decreased.</p>

<input checked="" type="radio"/> <b>Auto</b>	Select <b>Auto</b> for the USB adapter to select the Preamble type automatically depending on the Access Point Preamble type.
<b>Fragmentation Threshold</b>	To fragment MSDU or MMPDU into small sizes of frames for increasing the reliability of frame (The maximum value of 2346 means no fragmentation is needed) transmission. The performance will be decreased as well, thus a noisy environment is recommended.
<b>RTS/CTS Threshold</b>	This value should remain at its default setting of <b>2347</b> . Should you encounter inconsistent data flow, only minor modifications of this value are recommended.
<b>Power Save</b>	Check the box to allow the Adapter to go to sleep mode, during which data communication could be interrupted.
<b>Submit</b>	Click <b>Submit</b> to save the changes.
<b>Exit</b>	Click <b>Exit</b> to exit the application.

## Info

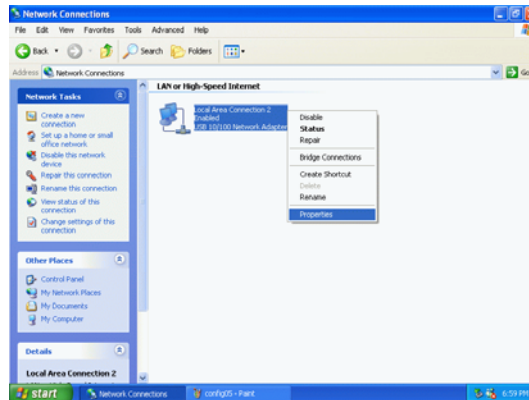
You can view basic information about the Utility like the **Driver**, **Firmware** and **Application Version**. Use the **Exit** button to exit the application.



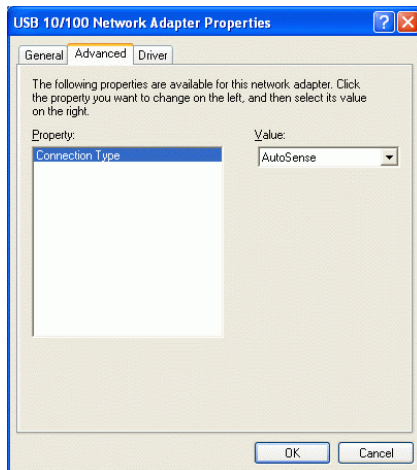
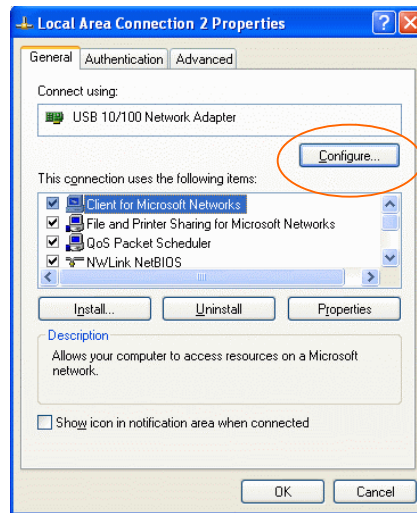
## Configuration for Windows XP

### USB 10/100 Network Adapter

1. Go to **Start** → **Control Panel** → **Network and Internet Connections** → **Network Connections**.
2. In **Network Connections** window, right-click the **Local Area Connection Enabled USB 10/100 Network Adapter** icon, and select **Properties**.

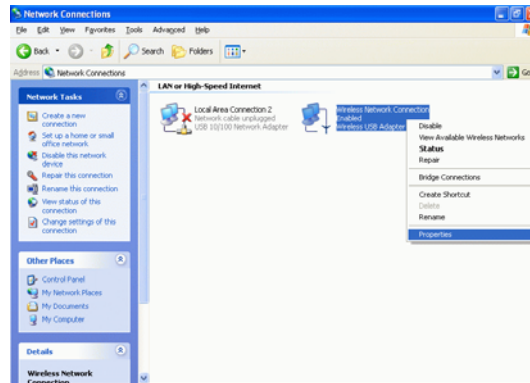


3. In **Local Area Connection Properties** window, select the **General** tab. Click **Configure** to enable Windows configuration.



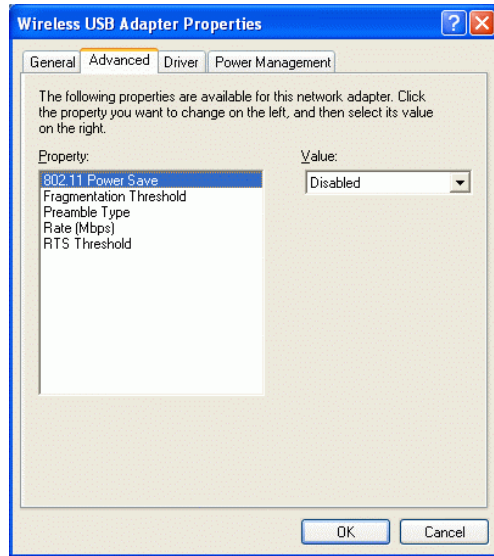
## Wireless USB Adapter

1. Go to **Start** → **Control Panel** → **Network and Internet Connections** → **Network Connections**.
2. In **Network Connections** window, right-click the **Wireless Network Connection Enabled Wireless USB Adapter** icon, and select **Properties**.



**Note:** Double-click the **Wireless Network Connection Enabled Wireless USB Adapter** icon and you will see the status of the wireless PC Card.

3. In **Wireless Network Connection Properties** window, select the **Advanced** tab.

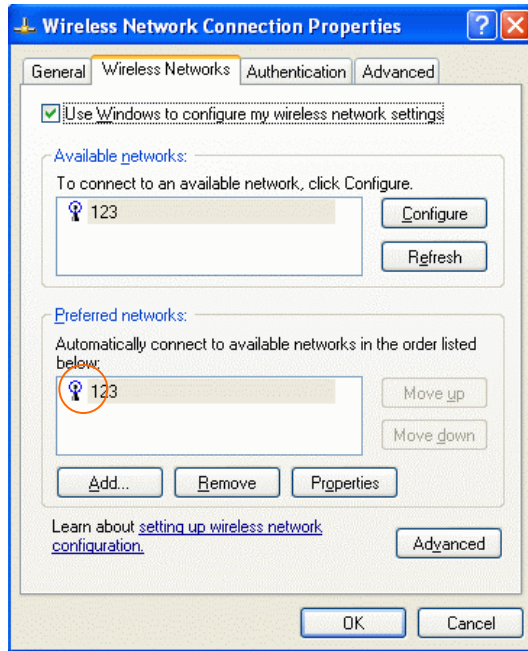


Property	Description
<b>802.11 Power Save</b>	Enable the function to allow the Adapter to go to sleep mode, during which data communication could be interrupted.
<b>Fragmentation Threshold</b>	To fragment MSDU or MMPDU into small sizes of frames for increasing the reliability of frame (The maximum value of 2346 means no fragmentation is needed) transmission. The performance will be decreased as well, thus a noisy environment is recommended.
<b>Preamble Type</b>	A preamble is a signal used in wireless environment to synchronize the transmitting timing including Synchronization and Start frame delimiter.



<input type="radio"/> <b>Long</b>	If in a "noisy" network environment, the Preamble Type should be set to <b>Long</b> .
<input type="radio"/> <b>Short</b>	The <b>Short</b> preamble is intended for applications where minimum overhead and maximum performance is desired. If in a "noisy" network environment, the performance would be decreased.
<input type="radio"/> <b>Auto</b>	Select <b>Auto</b> for the USB adapter to select the Preamble type automatically depending on the Access Point Preamble type.
<b>Rate (Mbps)</b>	It shows the current transfer rate. ( <b>1, 2, 5.5, or 11Mbps or Auto</b> )
<b>RTS Threshold</b>	This value should remain at its default setting of <b>2347</b> . Should you encounter inconsistent data flow, only minor modifications of this value are recommended.

4. In **Wireless Network Connection Properties** window, select the **Wireless Networks** tab.



**Use Windows to configure...**

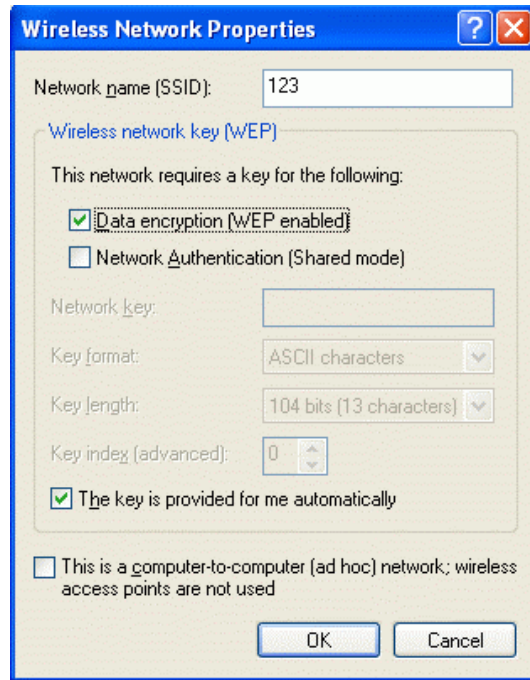
Check the box to enable Windows configuration.

**Available networks**

Displays all available networks.

**Configure**

Click the button to set up a new network or WEP configuration as illustrated as below.



### **Refresh**

Click the button to refresh and search for all available networks.

### **Preferred networks**

From available network(s) listed above, you can select preferred one(s) in an order that you can arrange.

The marked one is the currently used network.

**Move up**

Move the selected network forward one position.

**Move down**

Move the selected network back one position

**Add...**

Click the button and the **Wireless Network Properties** window will appear. In the **Network name** field, enter your desired network name listed in the above **Available networks** box, and click **OK**.

*Note:* The new settings will be active only after you click on **OK** in the **Wireless Network Connection Properties** window.

**Remove**

Highlight the unwanted network listed in the **Preferred networks** box, and click the button to remove it.

**Properties**

Highlight the network listed in the above **Preferred networks** box, and click the button to display its properties.

Once network configuration is done, make sure to click **OK**. The new parameters will be saved and active only after doing so.

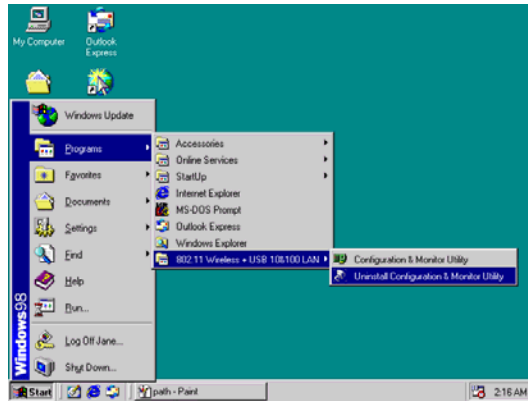
## Uninstall Procedure

*Note:* In case you need to uninstall the Utility or device, please refer to below section.

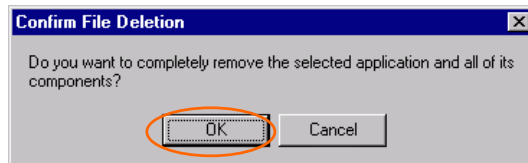
### Uninstall Procedure Under Windows 98SE/ME/2000

#### Uninstall the Configuration Utility

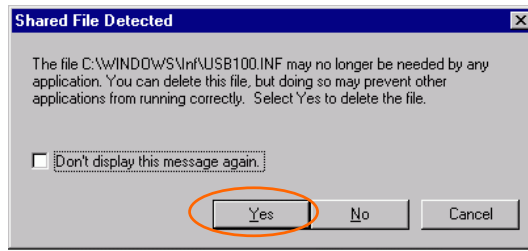
1. Go to **Start** → **Programs** → **802.11 Wireless + USB 10&100 LAN** → **Uninstall Configuration and Monitor Utility**.



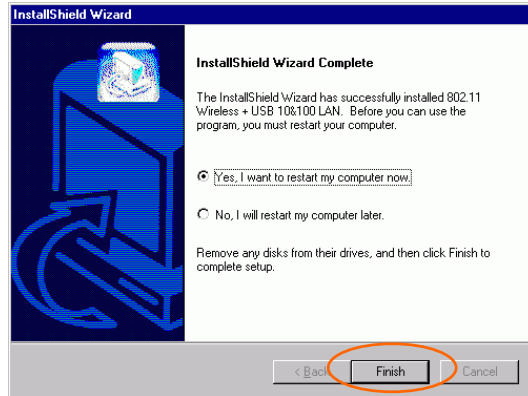
2. Click **OK** to continue.



3. Click **Yes**.



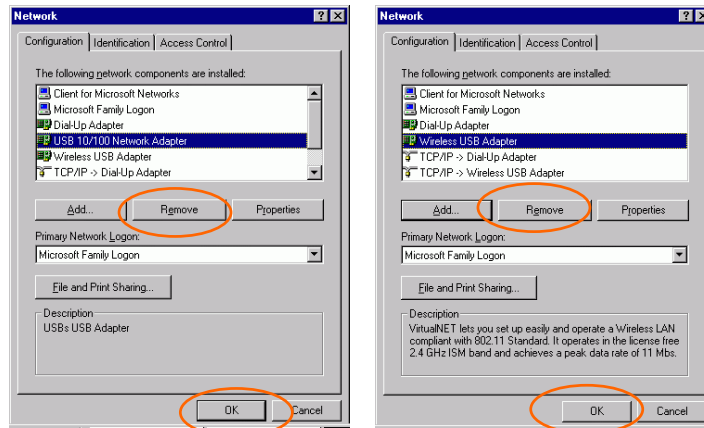
4. Click **Finish** to complete the uninstalled procedure.



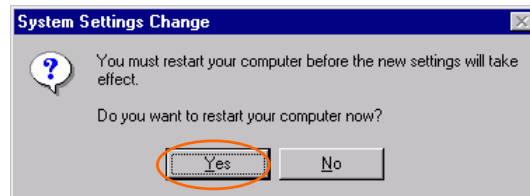
## Uninstall the device

### Under Windows 98SE/ME

1. Go to **Start** → **Settings** → **Control Panel** → **Network**.
2. Select **USB 10/100 Network Adapter** or **Wireless USB Adapter** then click **Remove**. Click **OK**.



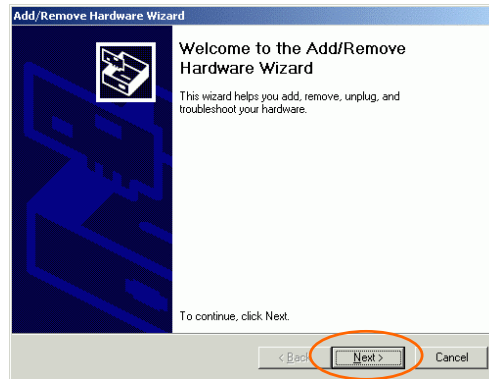
3. The system will prompt you to restart your computer. Click **Yes**.



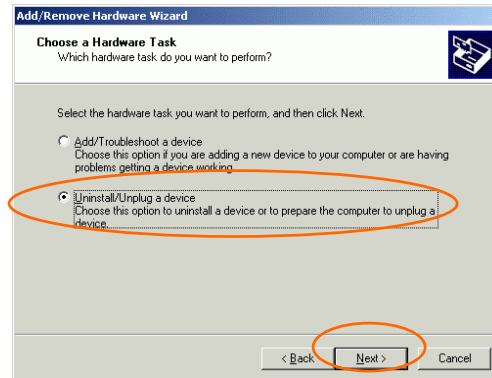
## Under Windows 2000

### USB 10/100 Network Adapter

1. Go to **Start** → **Control Panel** → **Add/Remove Hardware**.
2. When the Welcome screen appears, click **Next** to continue.

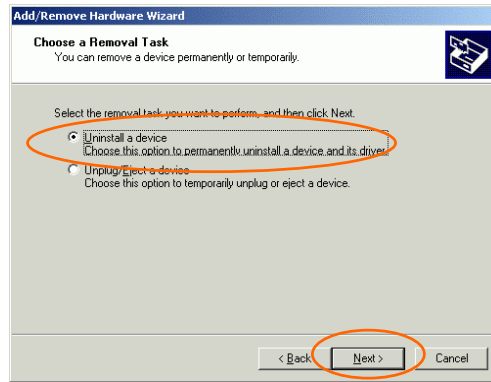


3. In **Choose a Hardware Task**, select **Uninstall/Unplug a device** and click **Next**.

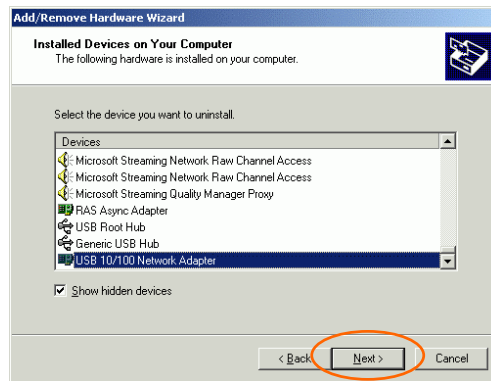




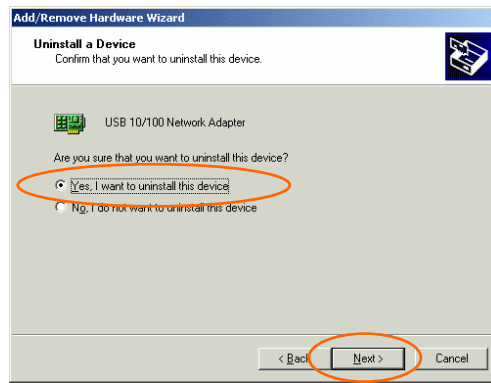
4. In **Choose a Removal Task**, select **Uninstall a device** and click **Next**.



5. Check the **Show hidden devices** check box and locate the device in the device list. Select the device and click **Next**.



6. Select **Yes, I want to uninstall this device** and click **Next**.

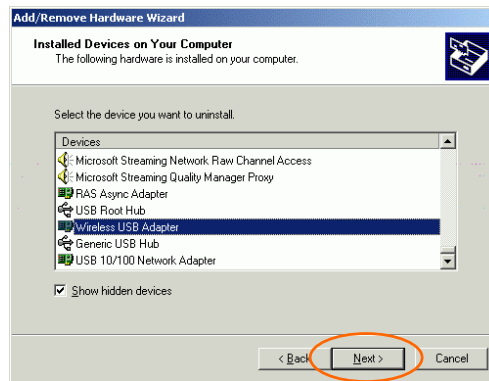


7. Click **Finish** to complete the uninstalled procedure.



### **Wireless USB Adapter**

1. Repeat **Step 1-4** in previous section. ([USB 10/100 Network Adapter](#))
2. Check the **Show hidden devices** check box and locate the device in the device list. Select the device and click **Next**.



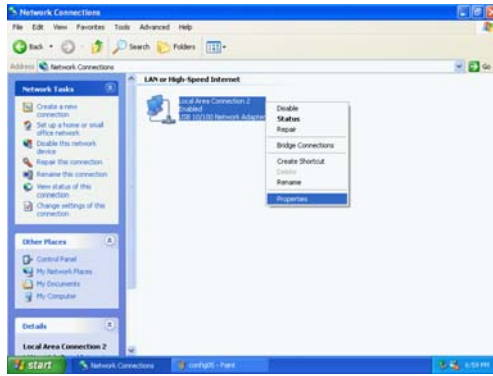
3. Select **Yes, I want to uninstall this device** and click **Next**.
4. Click **Finish** to complete the uninstalled procedure.

## Uninstall Procedure Under Windows XP

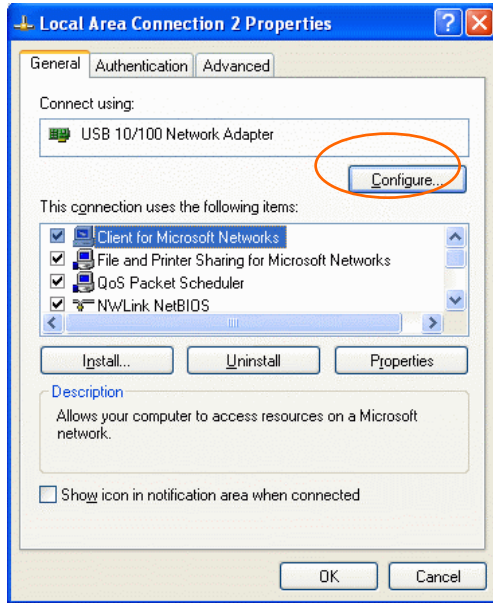
### Uninstall the driver

#### USB 10/100 Network Adapter

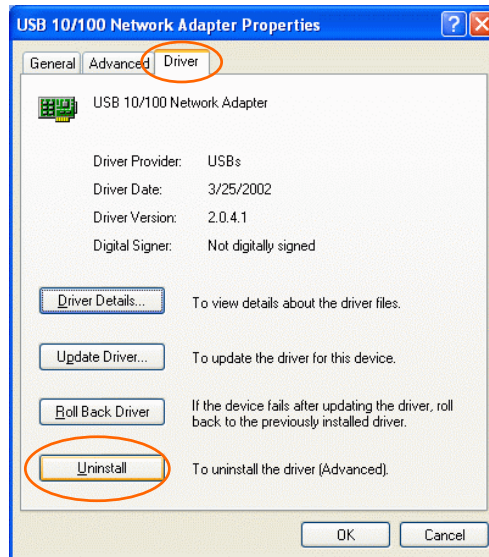
1. Go to **Start → Control Panel → Network and Internet Connections → Network Connections → Local Area Connection Enabled USB 10/100 Network Adapter → Properties**.



2. Click **Configure** to continue.



3. In **Driver** tab, click **Uninstall** to uninstall this device.

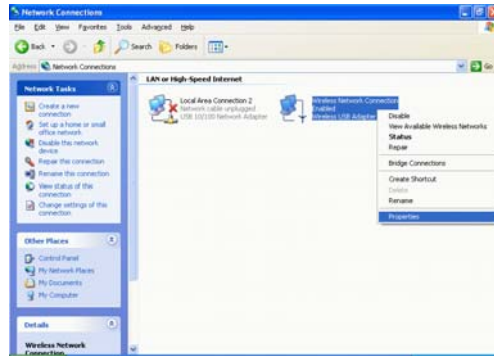


4. Click **OK** to complete the uninstalled procedure.



## Wireless USB Adapter

1. Go to **Start** → **Control Panel** → **Network and Internet Connections** → **Network Connections** → **Wireless Network Connection Enabled Wireless USB Adapter** → **Properties**.



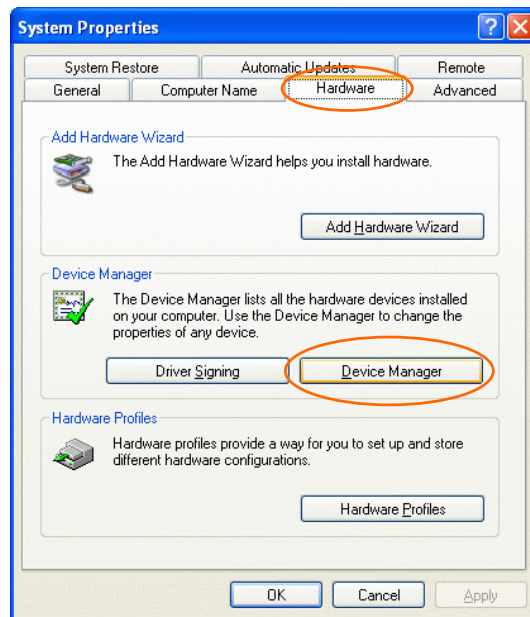
2. Click **Configure** to continue.
3. In **Driver** tab, click **Uninstall** to uninstall this device.
4. Click **OK**.



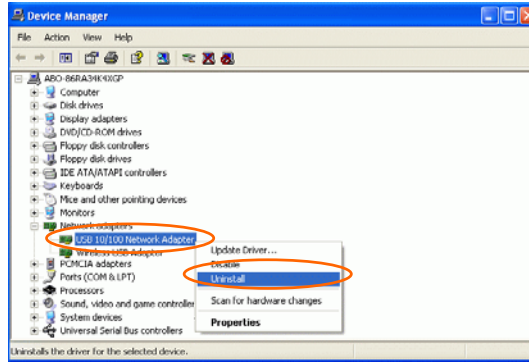
## Uninstall the device

### USB 10/100 Network Adapter

1. Go to **Start → Control Panel → System → Hardware → Device Manager**.



2. In **Network Adapter** item, right-click **USB 10/100 Network Adapter** and then select **Uninstall**.



3. Click **OK** to uninstall this device.

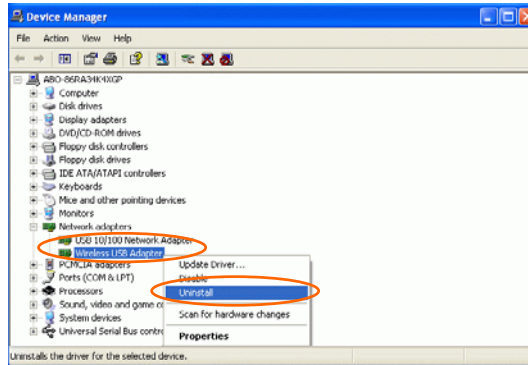


### Wireless USB Adapter

1. Go to **Start → Control Panel → System → Hardware → Device Manager**.



2. In **Network Adapter** item, right-click **USB 10/100 Network Adapter** and then select **Uninstall**.



3. Click **OK** to uninstall this device.



## Specifications

<b>Wireless</b>	
<b>Standard</b>	IEEE 802.11b
<b>Host Interface</b>	USB 1.1
<b>Physical</b>	Weight: 450 g Dimension: 91.5(L) x 64 (W) x 24.2(H) mm
<b>Antenna</b>	External Antenna, rotating angle 0° to 90°
<b>LED Indicators</b>	Ethernet: Green, ON Power: Green, ON WLAN: Green, ON
<b>Power Requirement</b>	Operating Voltage: 5V DC <ul style="list-style-type: none"> <li>• TX consumption: 442mA (Max)</li> <li>• RX consumption: 261mA (Max)</li> </ul>
<b>Frequency Range</b>	2.412GHz ~ 2.4835GHz
<b>Number of Selectable Channels</b>	USA, Canada: 11 channels Europe: 13 channels Japan: 14 channels
<b>Modulation Technique</b>	Direct Sequence Spread Spectrum (CCK, DQPSK, DBPSK)
<b>Security</b>	0/64/128 bit WEP
<b>Spreading</b>	11 chip Barker sequence
<b>Bit Error rate</b>	Better than $10^{-5}$

<b>Media Access Protocol</b>	CSMA/CA (Collision Avoidance) with ACK
<b>Supported OS</b>	Windows 98SE/ ME/ 2000/ XP
<b>EMC Certification</b>	FCC Part 15 in US EN300328 and EN300826 (301489-17) in Europe
<b>LAN</b>	
<b>Standards</b>	IEEE 802.3 for 10BaseT Ethernet IEEE 802.3u for 100BaseT Ethernet
<b>Ports</b>	1 RJ-45 port; 1 USB B type port
<b>Data Rate</b>	10/100 Mbps for Ethernet data transfer
<b>Supported OS</b>	Windows 98SE/ ME/ 2000/ XP