

Troubleshooting

Please read this User Guide carefully before using your wireless speaker. Check this list for a possible troubleshooting solution before calling for service.

Problem	Solution
No power	<ul style="list-style-type: none">• Make sure that the USB charging line is correctly connected.• The built-in lithium battery may be drained. Charge the battery by connecting the USB charger.
No sound output via Bluetooth	<ul style="list-style-type: none">• Make sure your Bluetooth device is properly connected to the speaker.• Make sure that the volume level of your AcTek device is not set to the minimum.• Make sure that the volume level of your Bluetooth device connected to the speaker is not set to the minimum.• Make sure that your Bluetooth device is not muted.• Make sure that your stereo audio cable is not connected to the AUX IN jack of the speaker.
No sound output in AUX IN mode	<ul style="list-style-type: none">• Make sure that the AUX cable is undamaged and firmly connected to the AcTek device.• Make sure that the volume level of the speaker is not set to the minimum.• Make sure that the volume level of the connected external device is not set to the minimum.
Low Battery Warning	<ul style="list-style-type: none">• When the battery is low, the indicator light will turn red and an alert will sound. Use the USB cable for charging.• The internal battery is drained. Charge the battery or connect the USB charger and turn on the system again.
Bluetooth connection cannot be established	<ul style="list-style-type: none">• Make sure that the audio cable has been removed from the AUX IN jack of your wireless speaker.• If the connection fails when making a Bluetooth connection between the speaker and your Bluetooth device for the first time, turn off your AcTek unit, then turn it on again to clear the device name, then try the connection again.

4

Specifications

Designs and specifications are subject to change without notice.

English		Espanol	
Transducers	2-40mm	Transductores	2-40mm
Amplifier power	2-4W	Potencia de amplificador	2-4W
Frequency response	150Hz - 20kHz	Respuesta en frecuencia	150Hz - 20kHz
Signal-to-noise ratio	>85dB	Relación señal-ruido	>85dB
Battery type	polymer Li-Ion	Tipo de pila	Li-Ion Polimero
Bluetooth transmitter Frequency range	2.402-2.480GHz	Rango de frecuencia del transmisor Bluetooth	2.402-2.480GHz
Listening time on battery power	Up to 10 hours @0.2W	Tiempo de escucha a pilas	> 10 horas a 0.2W
Battery charge time(Max)	3 hours	Tiempo de carga de la pila	3 horas
Dimensions	159*108*143(mm)	Dimensiones	159*108*143(mm)
Bluetooth version	V3.0+BLE	Bluetooth versión	V3.0+BLE
Francais		Deutsch	
Transducteurs	2-40mm	Wandler	2-40mm
Puissance d'amplificateur	2-4W	Verstärkerleistung	2-4W
Courbe de résonance	150Hz - 20kHz	Frequenzgang	150Hz - 20kHz
Rapport signal sur-bruit	>85dB	Signal-Rausch-Verhältnis	>85dB
Type de batterie	Li-Ion polymère	Batterietyp	Li-Ionen-Polymer
Plage de fréquence de l'émetteur Bluetooth	2.402-2.480GHz	Bluetooth-Sender Frequenzbereich	2.402-2.480GHz
Autonomie d'écoute	> 10 heures @0.2W	Hörstunden bei Batteriebetrieb	> 10 Stunden bei 0.2W
Durée de charge	3 heure	Batterieladezeit	3 Stunden
Dimensions	159*108*143 (mm)	Abmessungen	159*108*143 (mm)
Bluetooth version	V3.0+BLE	Bluetooth Version	V3.0+BLE
Italiano		日本語	
Trasduttori	2-40mm	トランスデューサ	2-40mm
Potenza amplificatore	2-4W	アンプの電源	2-4W
Risposta in frequenza	150Hz - 20kHz	周波数特性	150Hz - 20kHz
Rapporto segnale-rumore	>85dB	信号対雑音比	>85 dB
Tipo batteria	polimeri di Ioni di lio	電源	リチウムイオン充電電池
Intervallo di frequenza trasmettore Bluetooth	2.402-2.480GHz	Bluetooth送信周波数範囲	2.402-2.480GHz
Tempo di ascolto con batteria	> 10 ore @0.2W	バッテリー再生時間	> 10時間@0.2W
Tempo di ricarica della batteria	3 ore	バッテリー充電時間	3時間
Dimensioni	159*108*143 (mm)	サイズ	159*108*143 (mm)
Versione del Bluetooth	V3.0+BLE	Bluetoothバージョン	V3.0+BLE

5

FCC Statement

This equipment has been tested and found to comply with the limits for a Class B digital device, pursuant to part 15 of FCC Rules. These limits are designed to provide reasonable protection against harmful interference in a residential installation. This equipment generates and can radiate radio frequency energy and, if not installed and used in accordance with the instructions, may cause harmful interference to radio communications. However, there is no guarantee that interference will not occur in a particular installation. If this equipment does cause harmful interference to radio or television reception, which can be determined by turning the equipment off and on, the user is encouraged to try to correct the interference by one or more of the following measures:

--Reorient or relocate the receiving antenna.

--Increase the separation between the equipment and receiver.

--Connect the equipment into an outlet on a circuit different from that to which the receiver is connected.

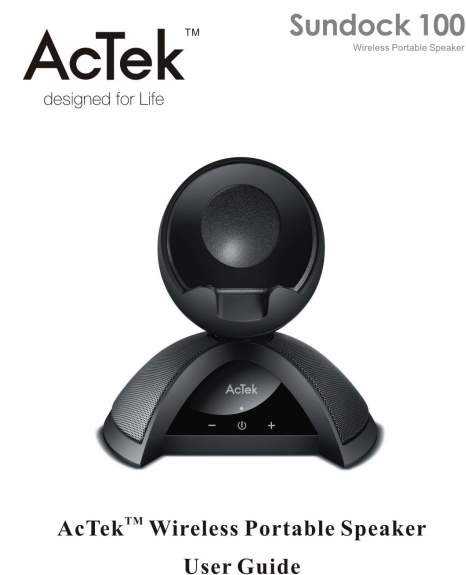
--Consult the dealer or an experienced radio/TV technician for help.

This device complies with Part 15 of FCC Rules. Operation is subject to the following two conditions: (1) This device may not cause harmful interference, and (2) This device must accept any interference received, including interference that may cause undesired operation.

Note: The manufacturer is not responsible for any radio or TV interference caused by unauthorized modifications to this equipment. Such modifications could void the user's authority to operate this equipment. Any changes or modifications not expressly approved by the party responsible for compliance could void the user's authority to operate the equipment.

This device is measured RF output power is less than the SAR exclusion threshold value for human head and body. Therefore, SAR test is not necessary.

6



Before using your new product, please read these instructions to prevent any damage.

Contents

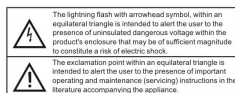
Introduction	1
Safety information.....	1
Features.....	2
Setting up/Using your wireless speaker.....	3
Troubleshooting	4
Specifications.....	5
FCC Statement	6

Introduction

This manual explains how to correctly install, operate and get the best performance from your AcTek Wireless Portable Speaker. Read this user guide carefully before installing your system and keep it for later reference.

Your AcTek Wireless Portable Speaker uses Bluetooth to receive audio from a smartphone, tablet or any other Bluetooth-enabled device, providing superior level audio quality and resistance to interference.

Safety information



Important Safety Instructions

- 1) Read these instructions.
- 2) Keep these instructions.
- 3) Heed all warnings.
- 4) Follow all instructions.
- 5) Do not use this apparatus near water.
- 6) Clean only with dry, soft cloth. Household cleaners or solvents can damage the finish on your AcTek system.
- 7) Do not block any ventilation openings. Install in accordance with the manufacturer's instructions.
- 8) Do not install near any heat sources such as radiators, heat registers, stoves or other apparatus that produce heat.

1

- 9) Protect the power cable from being walked on or pinched, particularly at plugs, convenience receptacles and the point where they exit from the device.
- 10) Use only attachments/accessories approved by the manufacturer.
- 11) Unplug the system from power source during lightning storms or when unused for long periods of time.
- 12) Refer all servicing to AcTek-qualified service personnel. Servicing is required when the system has been damaged in any way, including power-supply or plug damage, liquid spills, objects having fallen into the unit, unit exposed to rain or moisture, unit has been dropped or does not operate normally.
- 13) The power plug should be readily accessible to disconnect the equipment.
- 14) Warning: To reduce the risk of fire or electric shock, do not expose the unit to rain or moisture.
- 15) Do not expose the unit to dripping or splashing liquid and do not place objects filled with liquid, such as vases, on it.

Features

- 2-in-1, Bluetooth Speaker and phone stand
- Unique, patented design
- Touch-sensitive controls
- 2 broad-frequency response speakers
- Rich, 360°, crystal-clear sound
- Compatible with Android/iOS/Windows/MAC OS
- Built-in, rechargeable Li-ion battery provides up to 10 hours play time
- Supports both Bluetooth and Audio
- Memory pairing capability. Easy to operate
- Two-way USB port, plays and charges at the same time

Package contents

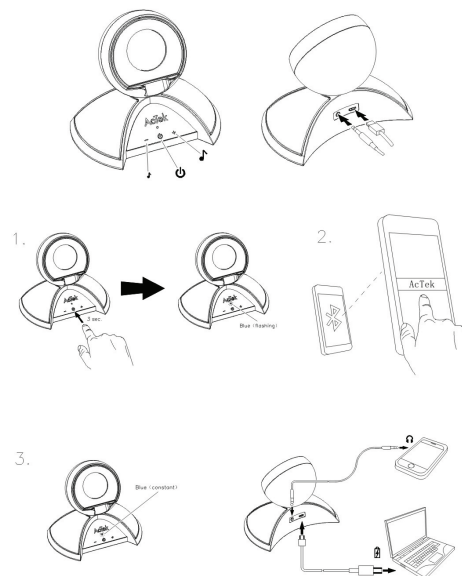
Examine the contents of the box for your AcTek Wireless Speaker.

The box should contain:

- AcTek Wireless Portable Speaker
- USB charging cord
- 3.5mm Audio cable
- User Guide

2

Setting up / Using your wireless speaker



3