

ATMOSPHERE :: MINI™

Owner's Guide / Manual de uso / 使用指南 / 사용자 가이드



Atmosphere Mini™ Air Treatment System /
Sistema de tratamiento de aire Atmosphere Mini™ /
迷你空气净化器 /
공기 정화 시스템

ARTWORK LEGEND

Artwork Number: A2101328
Product Name: Atmosphere Mini
Component Type: Manual
Description: Owner's Guide
Version: 5
Proof Date: 09/08/2021
Die Number:
Dimensions: 0(L) x 6(W) x 8.4(D) IN
Pages: 48
Two-Sided: Yes
Superseded Artwork: A2000635
Reason for Change: Revision: Update Warranty copy
per DAS, remove #13 polarized plug statement in
Important Safeguardsper Tech Reg.



Black



PANTONE
5405 C



7575 East Fulton
Add, MI 49355

Digital Proof: SCPQAProof@amway.com **Physical Proof:** PQC Proofing, 44B-2G

Disclaimer: Final printed artwork is expected to be a visual match of the supplied artwork file. All colors to conform to established color standards. Amway must approve all artworks prior to printing.



ENGLISH

Congratulations! By purchasing the Atmosphere Mini™ Air Treatment System, you have made an important purchase for your family: to improve the air quality in your home.

The Atmosphere Mini™ Air Treatment System comes pre-installed with one filter that contains three treatment stages: the pre-filter, carbon and HEPA filter. Inside the box, you'll also find the power cord for the unit.

Table of Contents:

01

Important
Safeguards

02

Product Visuals

02

Get Started

03

3rd Party
Certifications

03

Troubleshooting

04

Replacement
Filters / Parts

04

Product
Features

05

Atmosphere™
Connect

05

Unit Display
Instructions

06

Maintenance

07

Customer
Service

08

Registration

08

Limited
Warranty

Important Safeguards:

Read all instructions before using the **Atmosphere Mini™** Air Treatment System.

⚠ WARNING: When using an electrical appliance, always follow basic safety precautions to reduce the risk of fire, electrical shock, and/or injury:

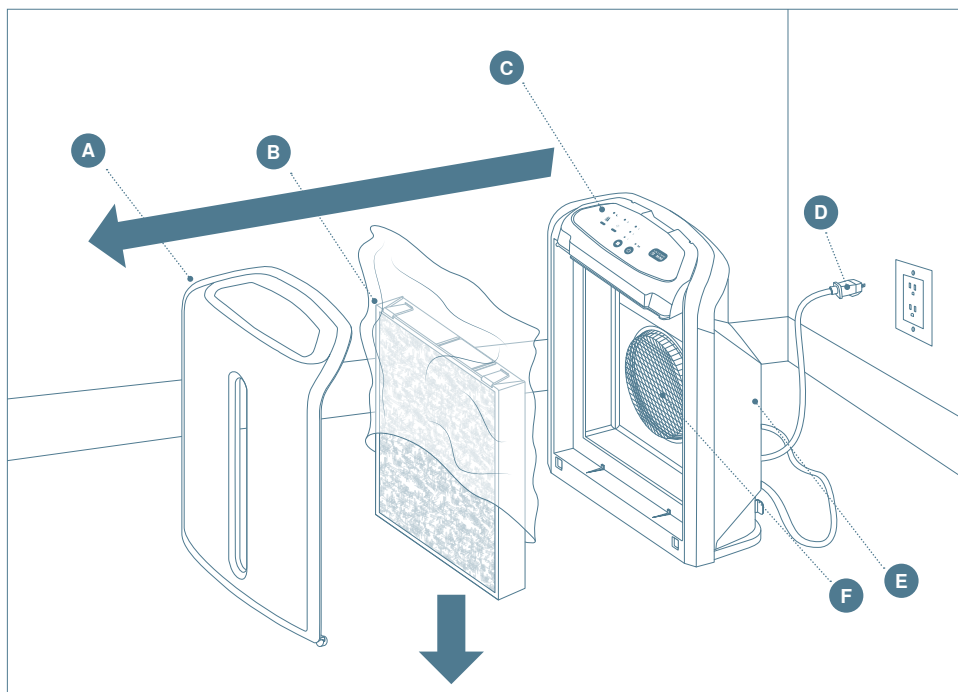
1. Always disconnect from power source before cleaning or performing maintenance, including filter replacement.
2. Before operating the unit, remove the front cover of the unit. Take out the filter, remove the protective bag, and reinstall the filter.
3. Do not open the housing. Internal parts are not to be serviced by the user. Repairs should be done by authorized service personnel only.
4. Do not allow liquids or any objects in any of the unit openings. Keep openings free of excessive dust, lint, hair or debris that may reduce the air flow.
5. Do not expose the unit to rain, and do not use in a wet area. Do not place the unit near a bathtub or a kitchen sink.
6. Do not unplug the unit by pulling on the cord. To unplug the unit, grasp the plug itself and pull gently.
7. Do not operate with a damaged cord, or plug. If the cord or plug is damaged, it must be replaced by a new cord and plug available from the manufacturer or its service agent. Return to an authorized service facility for examination and/or repair.
8. Do not run the power cord under carpeting. Do not cover with throw rugs, runners, or similar coverings. Do not route power cords under furniture or appliances. Arrange power cords away from traffic area and where it will not be tripped over.
9. Do not cut, damage, or modify the cord. Do not place the cord underneath or between heavy objects, and always keep the cord away from heated surfaces.
10. If the unit is not working properly or has been dropped or damaged, contact Customer Service.
11. **Do not use solvents or chemicals to clean the unit. Do not spray aerosols on the unit.**
12. This appliance can be used by children aged from 8 years and above and persons with reduced physical, sensory or mental capabilities or lack of experience and knowledge if they have been given supervision or instruction concerning use of the appliance in a safe way and understand the hazards involved. Cleaning and user maintenance shall not be made by children without supervision. Children should be supervised to ensure they do not play with the appliance.
13. Atmosphere Mini™ Air Treatment System is only to be used with the power cord provided.
14. **WARNING:** To Reduce The Risk Of Fire Or Electric Shock, Do Not Use This Fan With Any Solid-State Speed Control Device.

READ AND SAVE THESE INSTRUCTIONS

NOTES

1. The Atmosphere Mini™ Air Treatment System is not intended for use where oil particles are in the air, such as factories, or where continuous tobacco smoke is present, such as bars and restaurants. Usage in these environments could result in poor performance and shortened filter life.
2. The unit is shipped with the filter in protective wrapping to prolong the filter's effectiveness. Before operating the unit, remove the front cover, remove the filter from the packaging, and reinstall it.
3. **CARBON DUST MAY BE GENERATED DURING SHIPPING AND HANDLING. WHEN DISPOSING OF THE FILTER PACKAGING, DO NOT ALLOW DUST FROM THE PACKAGING TO COME INTO CONTACT WITH CLOTHING, FURNITURE, OR CARPET.**
4. To avoid blocking the unit's air flow, do not place items on top of the unit, or near the front cover of the unit.
5. Do not place the unit in front of heating vents.

Clean Air Starts Here



Get Started

1. Remove the unit from the box and remove the protective wrap from the unit.
2. Remove the front cover of the unit by placing your fingertips under the uppermost edge of the front shield, gently pull up on the shield to disengage (should hear snap) then pull the shield away from the front of the unit.
3. Remove the protective wrap on the filter. Avoid completing this step on carpet or a light colored surface, as carbon dust may fall from the filter.
4. Reinstall the filter, ensuring that the filter is secure and reattach the front shield.
5. Place the unit in the room where it will be used, near an electrical outlet and away from vents and high traffic areas. Make sure the space above the unit is kept clear, for proper air flow.
6. Plug cord into the unit and then into a nearby wall outlet.
7. Power on.
8. Download Atmosphere™ Connect mobile app from Google Play® or App Store®.

Your Atmosphere Mini™ Air Treatment System

- A. Front Shield
- B. 3-in-1 filter
- C. Display Module
- D. Power Cord
- E. Rear Housing
- F. Motor/Fan Assembly



Note: To manually register your Atmosphere Mini™ unit on the web go to: <https://myproducts.amwayglobal.com>

3rd Party Certifications:



Allergy UK – Seal of Approval

Indicates that the Atmosphere Mini™ Air Treatment System has been scientifically tested by a third-party laboratory to reduce or remove allergens, and is therefore suitable for use by people with allergies.



AHAM

The Atmosphere Mini™ Air Treatment System has been tested according to the AHAM Certification Program (ANSI/AHAM AC-1).

CADR

CADR (Clean Air Delivery Rate) verified by the U.S. Association of Home Appliance Manufacturers (AHAM) for the reduction of airborne tobacco smoke, dust, and pollen at air flow volumes of 130 cubic feet per minute. CADR is the main metric used to rate the performance of an air treatment system.



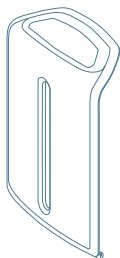
ENERGY STAR®

Is a registered mark owned by the U.S. Environmental Protection Agency. ENERGY STAR® is the simple choice for energy efficiency. For more than 20 years, people across America have looked to EPA's ENERGY STAR® program for guidance on saving energy, saving money, and protecting the environment. Behind each blue label is a product, building, or home that is independently certified to use less energy and cause fewer of the emissions that contribute to climate change. Join the millions who are already making a difference at energystar.gov. The energy efficiency of this ENERGY STAR certified model is measured based on a ratio between the model's CADR for Smoke and the electrical energy it consumes, or CADR/Watt.

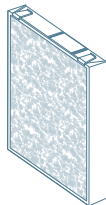
Troubleshooting

| Condition | Solution |
|---|---|
| The filter life light is on, but air does not come out of the unit. | Check that the protective shipping bags are removed from the filter inside the unit. Dirt and/or pet hairs can build up on the pre-filter. |
| The air volume from the unit is high, but it doesn't appear to be removing dust or odors from the room. | Make sure the filter is installed in the unit. If the air quality is especially challenging, because of cooking or pet odors, set the System to High speed for maximum results. |
| My unit will not connect to my Wi-Fi® network. | Please refer to the FAQ section within the Atmosphere™ Connect app or contact Customer Service. |
| My unit will not pair with Bluetooth® wireless technology. | Please refer to the FAQ section within the Atmosphere™ Connect app or contact Customer Service. |

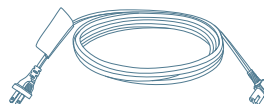
Replacement Filters / Parts



Replacement
Front Shield



Replacement
Filter



Replacement Power Cord

Atmosphere Mini™ Air Treatment System Features:

Air Filtration Process:

Air enters through the front cover of the unit. The pre-filter stage removes large, lint-like particles, the carbon filter stage reduces objectionable odors and the HEPA filter stage effectively removes 99.99% of particles as small as 0.0024 microns. Filtered air is discharged upward through the grill on the back of the unit.

The unit uses a unique internal air circulation system. The dual-part Intelligent Flow Assembly directs the air flow inside the unit, moving air in a pattern that minimizes resistance and noise and maximizes air flow.

Performance Features:

- » Effectively removes 99.99% of particles as small as 0.0024 microns in size from air passing through the filter.
- » Effectively reduces unpleasant odors, such as tobacco, cooking and pet odors.
- » CADR measures no less than 130 cubic feet per minute at speed 3, to clean rooms up to 200 sq. ft. in size (18.6m²). CADR (Clean Air Delivery Rate) is the main metric used to rate the performance of an air treatment system.
- » Effectively reduces airborne bacteria, mold, viruses, fungi, asbestos, dust mites and their by-products from air passing through the unit.
- » Allergen removal claims substantiated by third-party.
- » Energy efficient with low power consumption.