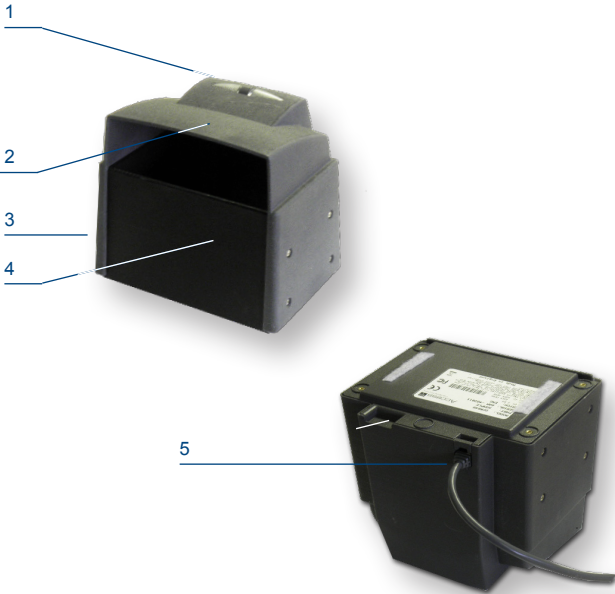


Model outline

The OCR640 captures the full page image and decodes the machine readable zone (MRZ) from documents complying to ICAO9303. The OCR640 has an integrated RFID reader enables the device to simultaneously decode the contents of an e-passport or contactless smart card.

Main features

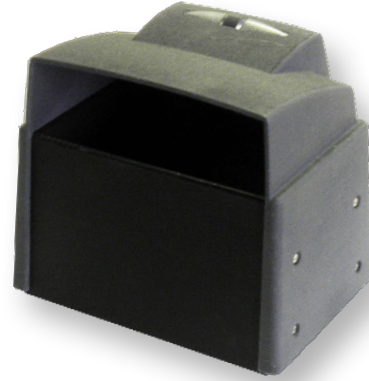


- 1. Fixed cover
- 2. OCR reading window
- 3. Power and read indicators
- 4. Document guide
- 5. RJ50 connector

OCR640 Series

Optical MRZ Identity Checker with eMRTD

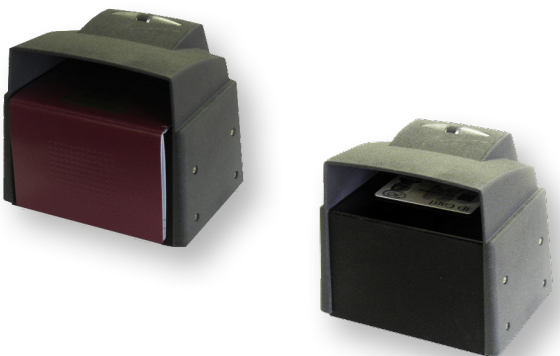
User Guide



Access IS
Interfacing Solutions

Document orientation

The document should be placed with the Machine Readable Zone (MRZ) facing downwards on the document guide. Slide the document under the cover until fully inserted.



Connection

Plug in the USB connection to the host device and connect the DC power connector to the power supply. The *power indicator* will illuminate green. The OCR640 requires an application programme to be running on the host computer; please refer to your system administrator.

How to read a document with OCR data

Orient the document correctly with the MRZ text down under the lid. Follow the instructions provided by the host application.

If a read is unsuccessful then re-present the document; for persistent errors refer to the *Troubleshooting* section.

How to read a document with data stored on the chip

Orient the document correctly with the MRZ text down under the lid. Follow the instructions provided by the host application.

If a read is unsuccessful then re-present the document; for persistent errors refer to the *Troubleshooting* section.

Troubleshooting

Problem	Possible Cause	Solution
Persistent bad reads	The document is oriented incorrectly in the document guide	Refer to <i>document orientation</i> section
	Poor reading technique	Refer to authorised trainer to check technique
	Dirty window	Refer to <i>Service & cleaning</i> section
Persistently not reading	Bad connection between host and OCR640	Check all connections
	Application not running on host or OCR640 not working properly	Consult with technical staff
MRZ reading but RFID failing	RFID antenna not installed	Ensure the the smartcard RFID is installed properly and is not conflicting
	Document being removed prior to RFID read completion	Refer to authorised trainer to check technique

Techniques for reading reliably

Do

1. Hold document still during read process
2. Ensure document is fully inserted under hinged cover

Don't

1. Remove document until host application instructs you to do so
2. Insert damaged or defaced documents on the reader

Service and cleaning

The module has no serviceable parts and must not be opened. The reading window can be cleaned by sliding a soft clean lint-free cloth under the lid and cleaning the glass window.

Warranty statement

(a) Access Limited (ACCESS) hardware Products are warranted against defects in workmanship and materials for a period of twelve (12) months from the date of shipment by ACCESS or an authorised reseller to its customer, but in no event more than fifteen (15) months from shipment of the Products by ACCESS, unless otherwise provided by ACCESS in writing, provided the Product remains unmodified and is operated under normal and proper conditions. (b) Spare parts (i.e. Parts, components, or subassemblies sold by ACCESS for use in the service and maintenance of Products) are warranted against defects in workmanship and materials for a period of thirty (30) days from the date of shipment. Spare parts may be new or originate from returned units under the conditions set forth in subsection (d) below; (c) For repairs on ACCESS-branded hardware Products under this Agreement, including repairs covered by warranty, the repair services provided are warranted against defects in workmanship and materials on the repaired component of the Product for a period of thirty (30) days from the shipment date of the repaired Product, or until the end of the original warranty period, whichever is longer; and (d) Products may be serviced or manufactured with parts, components, or subassemblies that originate from returned products and that have been tested as meeting applicable specifications for equivalent new material and Products. The sole obligation of ACCESS for defective hardware Products is limited to repair or replacement (at ACCESS's option) on a "return to service depot" basis with prior ACCESS authorisation. The customer is responsible for shipment to ACCESS and assumes all costs and risks associated with this transportation; return shipment to the customer will be at ACCESS's expense. The customer shall be responsible for return shipment charges for product returned where ACCESS determines there is no defect ("No Defect Found"), or for Product returned that ACCESS determines is not eligible for warranty repair. No charge will be made to the customer for replacement parts for warranty repairs. ACCESS is not responsible for any damage to or loss of any software programs, data or removable data storage media, or the restoration or reinstallation of any software programs or data other than the software, if any, installed by ACCESS during the manufacture of the Product; (e) Except for the warranty applying solely to the repaired component arising from a repair service as provided in (c) above, the aforementioned provisions do not extend the original warranty period of any Product that had either been repaired or replaced by ACCESS; (f) The above warranty shall not apply to any Product (I) which has been repaired, tampered with, altered or modified, except by ACCESS's authorized service personnel; or (II) in which the defects or damage to the Product result from normal wear and tear, misuse, negligence, improper storage, water or other liquids, battery leakage, use of parts or accessories not approved or supplied by ACCESS, or failure to perform operator handling and scheduled maintenance instructions supplied by ACCESS; (III) which has been subjected to unusual physical or electrical stress, abuse, or accident, or forces or exposure beyond normal use within the specified operational and environmental parameters set forth in the applicable Product specification; nor shall the above warranty provisions apply to any expendable or consumable items, such as batteries, supplied with Product. EXCEPT FOR THE WARRANTY OF TITLE AND THE EXPRESS WARRANTIES STATED ABOVE, ACCESS DISCLAIMS ALL WARRANTIES ON PRODUCTS FURNISHED HEREUNDER INCLUDING ALL IMPLIED WARRANTIES OF MERCHANTABILITY AND FITNESS FOR A PARTICULAR USE. ANY IMPLIED WARRANTIES THAT MAY BE IMPOSED BY LAW ARE LIMITED IN DURATION TO THE LIMITED WARRANTY PERIOD. SOME STATES OR COUNTRIES DO NOT ALLOW A LIMITATION ON HOW LONG AN IMPLIED WARRANTY LASTS OR THE EXCLUSION OR LIMITATION OF INCIDENTAL OR CONSEQUENTIAL DAMAGES FOR CONSUMER PRODUCTS. IN SUCH STATES OR COUNTRIES, FOR SUCH PRODUCTS, SOME EXCLUSIONS OR

Regulatory compliance

FCC compliance and Industry Canada compliance

This device complies with Part 15 of the FCC rules and with RSS-210 Issue 8. Operation is subject to the following two conditions:

- This device may not cause harmful interference;
- This device must accept any interference received including interference that may cause undesired operation.

WARNING! Changes or modifications made to the system that are not approved by the party responsible for compliance could void the user's authority to operate the equipment.

Note: This equipment has been tested and found to comply with the limits for a Class A digital device, pursuant to part 15 of the FCC Rules. These limits are designed to provide reasonable protection against harmful interference when the equipment is operated in a commercial environment. This equipment generates, uses, and can radiate radio frequency energy and, if not installed and used in accordance with the instruction manual, may cause harmful interference to radio communications. Operation of this equipment in a residential area is likely to cause harmful interference in which case the user will be required to correct the interference at his own expense.

This device complies with Industry Canada licence-exempt RSS standard(s). Operation is subject to the following two conditions:

- (1) This device may not cause harmful interference, and
- (2) This device must accept any interference received, including interference that may cause undesired operation.

•Le présent appareil est conforme aux CNR d'Industrie Canada applicables aux appareils radio exempts de licence. L'exploitation est autorisée aux deux conditions suivantes :

- (1) l'appareil ne doit pas produire de brouillage, et
- (2) l'utilisateur de l'appareil doit accepter tout brouillage radioélectrique subi, même si le brouillage est susceptible d'en compromettre le fonctionnement.

This class A digital apparatus complies with Canadian ICES-003.

Cet appareil numérique de la classe A est conforme à la norme NMB-003 du Canada.

CE

Marking by the CE symbol indicates compliance of this system to the applicable Council Directives of the European Union, including the EMC Directive (2004/108/EC) and the Low Voltage Directive (2006/95/EC). A "Declaration of Conformity" in accordance with the applicable directives has been made and is on file at Access Ltd.

WEEE (EC Directive Waste Electrical & Electronic Equipment)

This product should not be disposed with other commercial or household wastes at the end of its working life. Go to www.access-is.com/weee for more information.

© 2010 by Access Limited; Access IS is the trading name of Access Limited
Version 1.0 29th March 2011

LIMITATIONS OF THIS LIMITED WARRANTY MAY NOT APPLY. The stated express warranties are in lieu of all obligations or liabilities on the part of ACCESS for damages, including but not limited to, special, indirect or consequential damages arising out of or in connection with the use or performance of the Product or service. ACCESS's liability for damages to Solution Provider or others resulting from the use of any Product or service furnished here under shall in no way exceed the purchase price of said Product or the fair market value of said service, except in instances of injury to persons or property. To the fullest extent allowed by law, the warranties and remedies set forth in this agreement are exclusive and in lieu of all other warranties terms or conditions, express or implied, either in fact or by operation of law, statutory or otherwise, including without limitation warranties terms or conditions of/as to satisfactory quality, merchantability, fitness for a particular purpose, conformance to contract, correspondence with description and non-infringement, all of which are expressly excluded. ACCESS's warranties herein are granted only to ACCESS's customers or ACCESS's authorised Distributors, and are not extended to any third parties that, for the avoidance of doubt, include any resellers, agents or dealers. ACCESS neither assumes nor authorises any other person to assume for it any other liability in connection with the sale, installation, maintenance or use of its products, and ACCESS provides no warranty whatsoever for any non-standard Products supplied by it hereunder. ACCESS SHALL NOT BE LIABLE UNDER THIS WARRANTY IF ITS TESTING AND EXAMINATION DISCLOSES THAT THE ALLEGED DEFECT IN THE PRODUCT DOES NOT EXIST OR WAS CAUSED BY DISTRIBUTOR'S, OR DISTRIBUTOR'S RESELLER, CUSTOMER'S OR END USER'S, OR ANY THIRD PERSON'S MISUSE, NEGLIGENCE, IMPROPER INSTALLATION OR TESTING, UNAUTHORIZED ATTEMPTS TO REPAIR, OR ANY OTHER CAUSE BEYOND THE INSTALLATION OR TESTING. UNAUTHORISED ATTEMPTS TO REPAIR, OR ANY OTHER CAUSE BEYOND THE RANGE OF THE INTENDED USE, OR BY ACCIDENT, FIRE, LIGHTNING OR OTHER HAZARD.

Support

This user guide and other resources can be downloaded at www.access-is.com/downloads

For our terms and conditions please go to www.access-is.com/terms

For support and all other information, please contact us:

Access IS, Unit 18 Suttons Business Park, Reading, RG6 1AZ, United Kingdom

Telephone: +44 (0) 118 966 3333
eMail: sales@access-is.com
Web: www.access-is.com
Fax: +44 (0) 118 926 7281


Interfacing Solutions