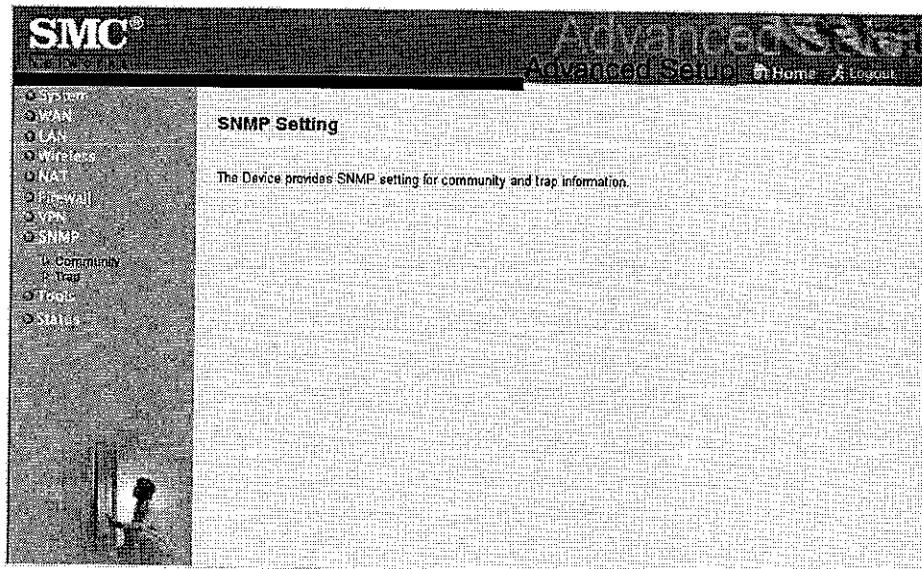
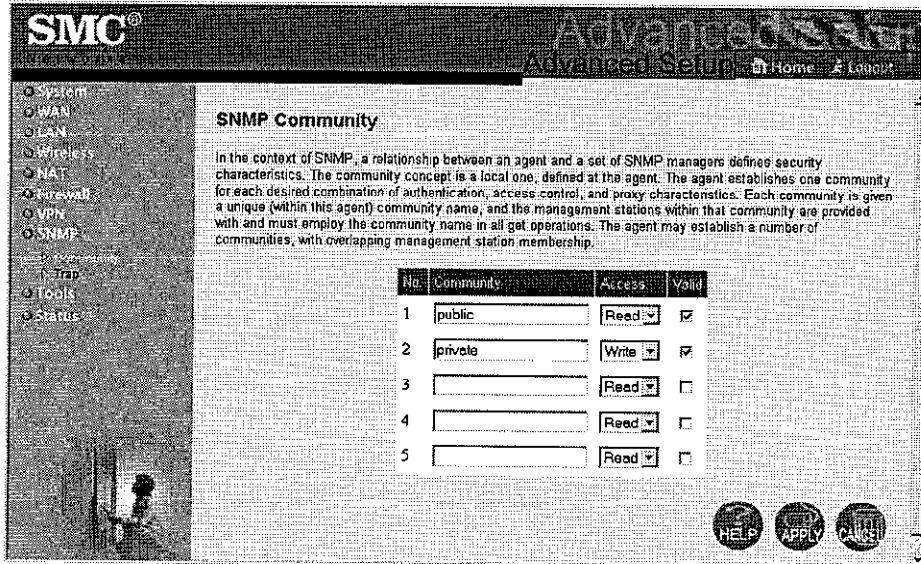


SNMP

Use the SNMP configuration screen to display and modify parameters for the Simple Network Management Protocol (SNMP). A computer attached to the network, called a Network Management Station (NMS), can be used to access this information. Access rights to the agent are controlled by community strings. To communicate with the Barricade Plus, the NMS must first submit a valid community string for authentication. The options for configuring community strings and related trap functions are described in the following sections.



Community



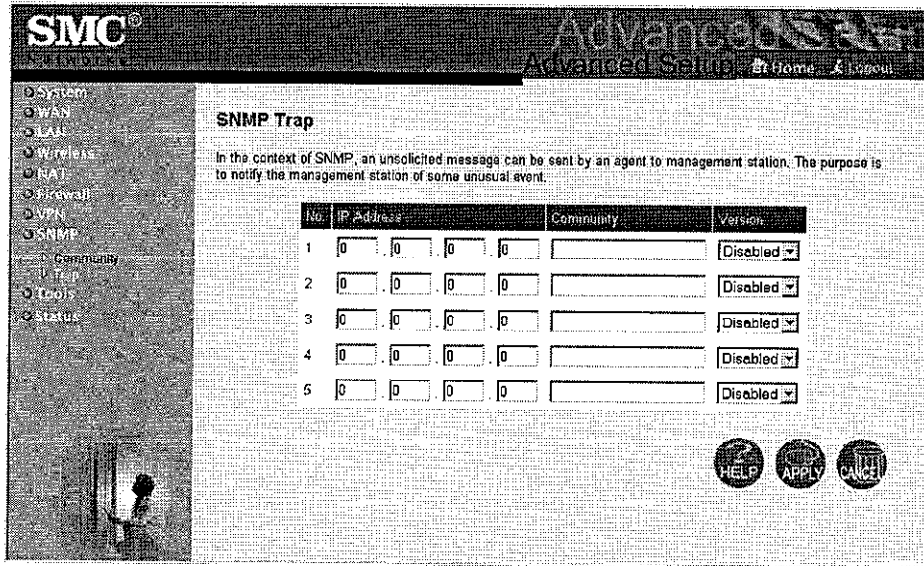
Community: A community name authorized for management access.

Access: Management access is restricted to Read only or Read/Write.

Valid: Sets administrative status of entry to enabled or disabled.

Note: Up to 5 community names may be entered.

Trap



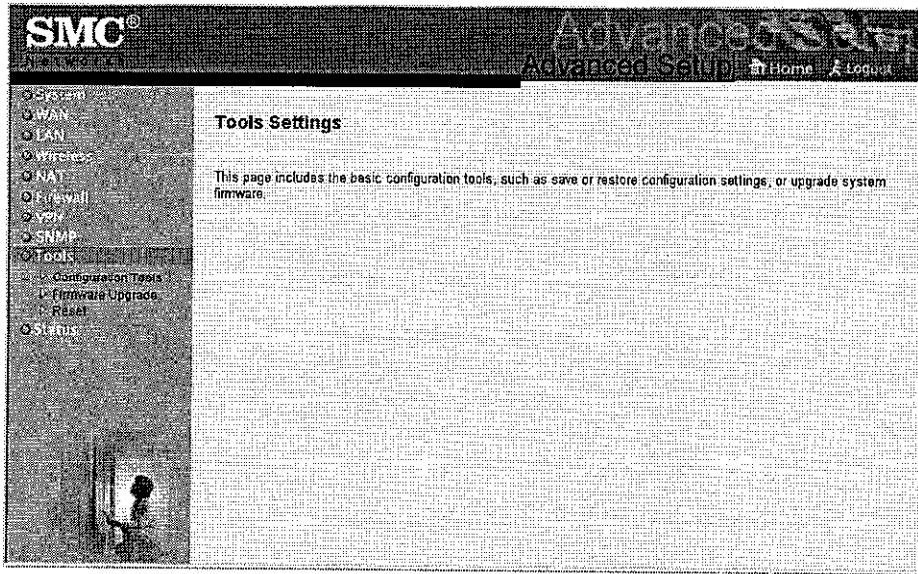
IP Address: IP address of the trap manager.

Community: A community specified for trap management.

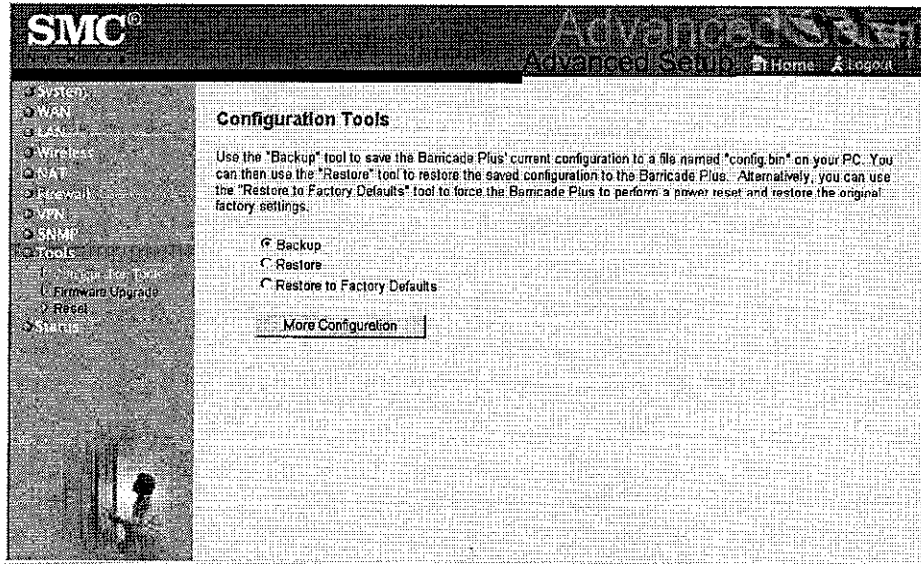
Version: Sets trap status of entry to disabled, or enabled with V1 or V2c.

Tools

You can use the “Tools” menu to restore factory settings, update firmware, or reboot the Barricade Plus.

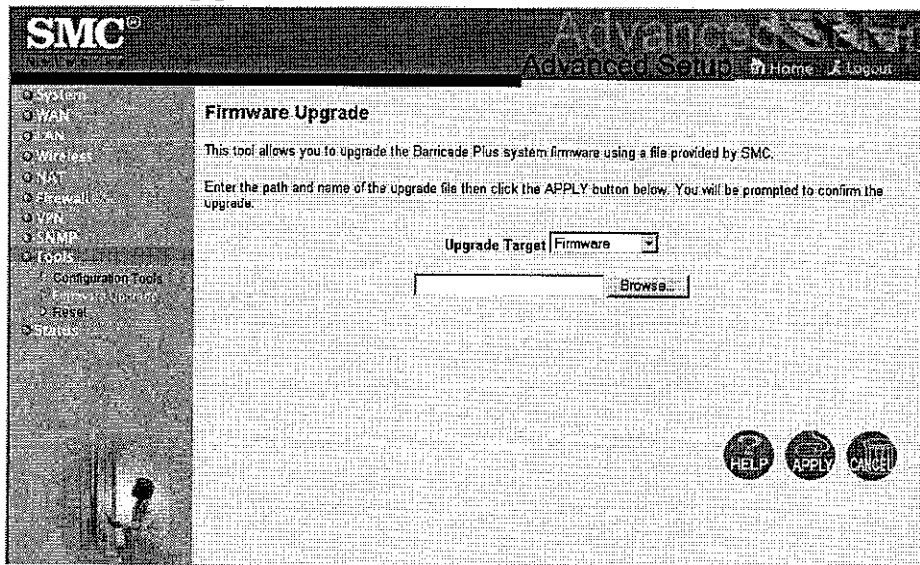


Configuration Tools



The “Backup” option allows you to save your Barricade Plus’ configuration to a file named config.bin on your PC. You can then click on the “Restore” radio button to restore the saved backup configuration file. Selecting the “Restore to Factory Defaults” can restore the factory settings.

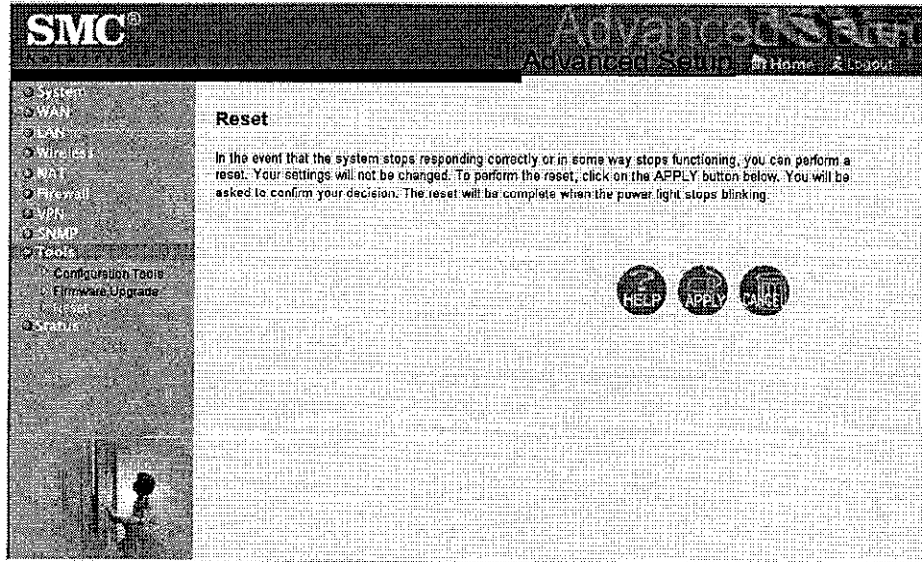
Firmware Upgrade



Use this screen to update the latest firmware using a file provided by SMC.

Note: For latest firmware version information, visit SMC's Web site at <http://www.smc.com>.

Reset



If the Barricade Plus stops responding, you can click on the “Apply” button to refresh the gateway. The saved configurations of the Barricade Plus will not be changed back to factory default settings after resetting the gateway.

Note: If you use the reset button on the front panel, the Barricade Plus performs a power reset and restores the factory settings.

Status

You can use the following screen to display WAN/LAN connection status, firmware and hardware version numbers, as well as information on all DHCP clients connected to your network.

SMC® Advanced Setup Home & Logout

Status

You can use the Status screen to see the connection status for the Barricade Plus WAN/LAN interfaces, firmware and hardware version numbers, any illegal attempts to access your network, as well as information on all DHCP client PCs currently connected to your network.

Current Time: 01/23/2002 03:55:20

INTERFACE	GATEWAY	INFORMATION
Cable/DSL: CONNECTED	IP Address: 192.168.2.1	Numbers of DHCP Clients: 1
WAN IP: 10.2.12.96	Subnet Mask: 255.255.255.0	Runtime Code Version: 0.43AW-F(2.5) (Jan 18 2002 18:20:58)
Subnet Mask: 255.255.252.0	DHCP Server: Enabled	Boot Code Version: V1.00
Gateway: 10.2.12.254	Firewall: Enabled	LAN MAC Address: 00-70-46-00-00-01
Primary DNS: 10.2.3.4	PPTP Client:	WAN MAC Address: 00-70-46-00-00-02
Secondary DNS: 0.0.0.0	Line 1: Disabled	Hardware Version: 01
	PPTP Server:	Serial Num: A000000001
	Line 1: Disconnected	
	Line 2: Disconnected	

Release Renew

Security Log
View any attempts that have been made to gain access to your network.

01/23/2002	03:55:05	Can't find
01/23/2002	03:54:32	Can't find
01/23/2002	03:54:00	Can't find
01/23/2002	03:53:27	Can't find
01/23/2002	03:52:55	Can't find

DHCP Client Log
View information on LAN DHCP clients currently linked to the Barricade Plus.

ip=192.168.2.110	mac=00-EO-29-
------------------	---------------

Done Internet

The following items are included in this screen:

Field	Description
INTERNET	Displays WAN connection type and status.
GATEWAY	Displays system IP settings, as well as DHCP, NAT, PPTP Client and PPTP Server Firewall.
INFORMATION	Displays the number of attached clients, the firmware versions, the physical MAC address for each media interface, as well as the hardware version and serial number.
Release	Click on this button to disconnect from the Internet.
Renew	Click on this button to reconnect to the Internet via cable/DSL modem.
Security Log	Displays any illegal attempts to access your network.
DHCP Client Log	Displays information on all DHCP clients on your network.

CHAPTER 5

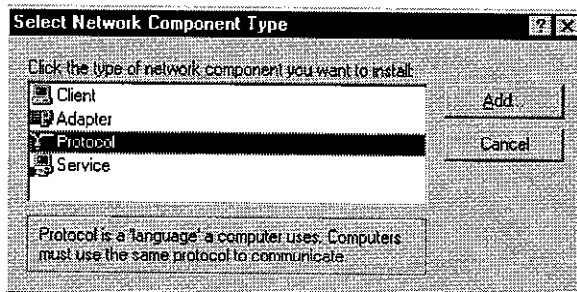
CONFIGURING CLIENT TCP/IP

If you have not previously installed the TCP/IP protocol on your client PCs, refer to the following section. If you need information on how to configure a TCP/IP address on a PC, refer to “Setting TCP/IP to Work with the Barricade Plus” on page 5-5.

Installing TCP/IP Protocol in Your PC

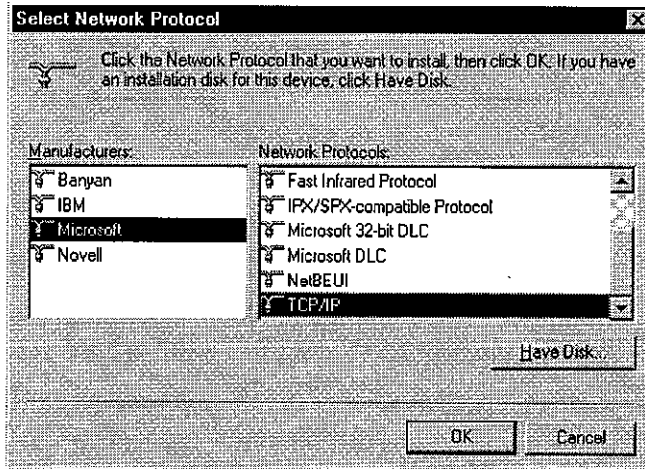
Windows 95/98/ME

1. Click the “Start” button and choose “Settings,” then click “Control Panel.”
2. Double click the “Network” icon and select the “Configuration” tab in the Network window.
3. Click the “Add” button to add the network component to your PC.
4. Double click “Protocol” to add the TCP/IP protocol.



INSTALLING TCP/IP PROTOCOL IN YOUR PC

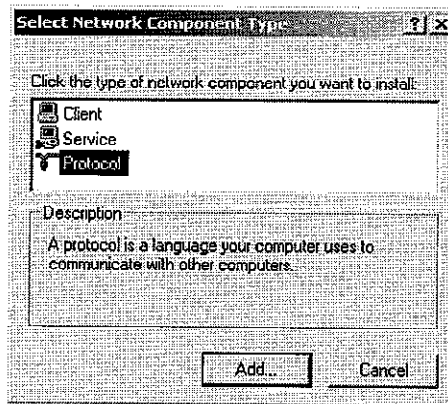
5. Select the "Microsoft" item in the manufacturers list. And choose "TCP/IP" in the Network Protocols. Click the "OK" button to return to the Network window.



6. The TCP/IP protocol will be listed in the Network window. Click "OK" to complete the install procedure and restart your PC to enable the TCP/IP protocol.

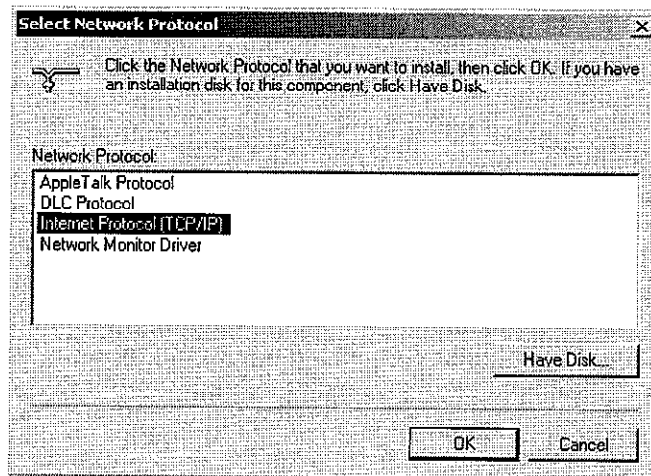
Windows 2000

1. Click the “Start” button and choose “Settings,” then click “Control Panel.”
2. Double click the “Network and Dial-up Connections” icon, then “Local Area Connection” icon, and press the “Properties” button in the “General” tab.
3. Click the “install…” button to add the network component to your PC.
4. Double click on “Protocol” to add the TCP/IP protocol.



INSTALLING TCP/IP PROTOCOL IN YOUR PC

5. Choose "Internet Protocol (TCP/IP)" in the Network Protocols. Click the "OK" button to return to the Network window.

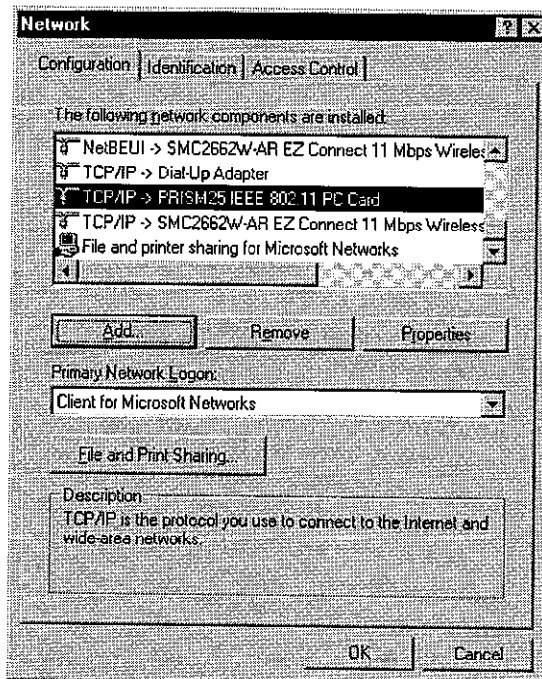


6. The TCP/IP protocol will be listed in the Network window. Click "OK" to complete the install procedure.

Setting TCP/IP to Work with the Barricade Plus

Windows 95/98/ME

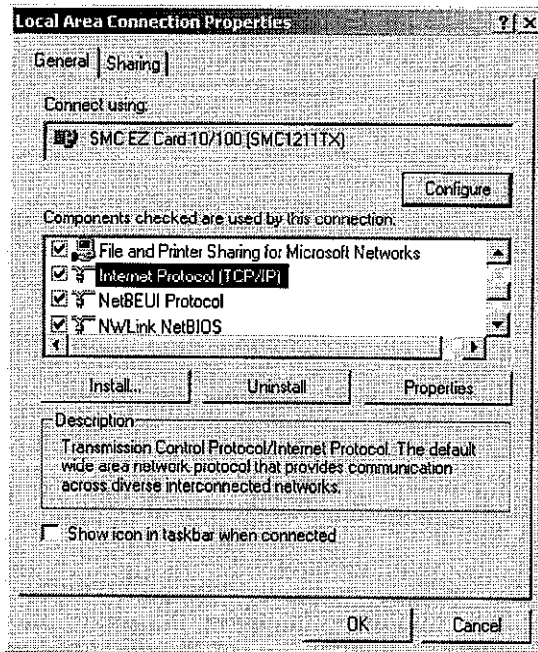
1. Click the “Start” button and choose “Settings,” then click “Control Panel.”
2. Double click the “Network” icon. Select the TCP/IP line that has been assigned to your network card in the “Configuration” tab of the Network window.
3. Click the “Properties” button to set the TCP/IP protocol for the Barricade Plus.



4. You can dynamically assign TCP/IP address settings to a client, or you can manually configure a client with address settings to meet your specific network requirements. (Note that the default IP address of the Barricade Plus is 192.168.2.1.)

Windows 2000

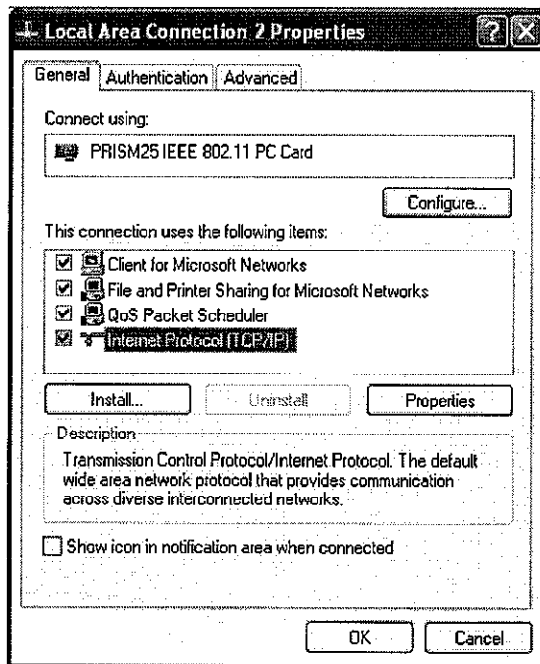
1. Click the “Start” button and choose “Settings,” then click “Control Panel.”
2. Double click the “Network and Dial-up Connections” icon, then “Local Area Connection” icon, and press the “Properties” button in the “General” tab.
3. Select the TCP/IP line that has been assigned to your network card in the “Local Area Connection Properties” window.
4. Click the “Properties” button to set the TCP/IP protocol for the Barricade Plus.



5. You can dynamically assign TCP/IP address settings to a client, or you can manually configure a client with address settings to meet your specific network requirements. (Note that the default IP address of the Barricade Plus is 192.168.2.1.)

Windows XP

1. Click the “start” button and choose “Control Panel.”
2. Select the “Network and Internet Connections” icon, then click the “Network Connections” icon, and double click on the “LAN or High-Speed Internet.”
3. Press the “Properties” button in the “General” tab.
4. Select the TCP/IP line that has been assigned to your network card in the “Local Area Connection Properties” window.
5. Click the “Properties” button to set the TCP/IP protocol for the Barricade Plus.



6. You can dynamically assign TCP/IP address settings to a client, or you can manually configure a client with address settings to meet your specific network requirements. (Note that the default IP address of the Barricade Plus is 192.168.2.1.)

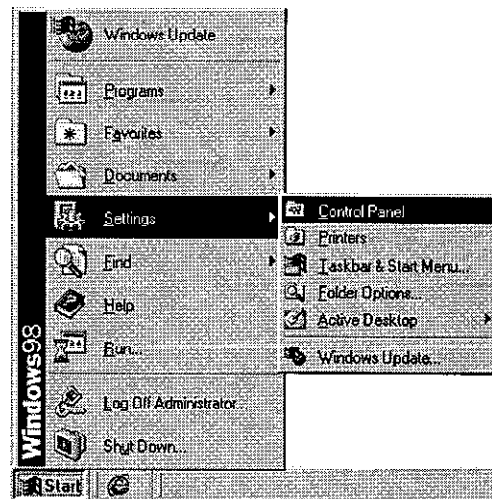
Configuring Your Computer with Windows 95/98/ME

You may find that the instructions here do not exactly match your version of Windows. This is because these steps and screenshots were created from Windows 98. Windows 95 and Windows Millennium Edition are very similar, but not identical, to Windows 98.

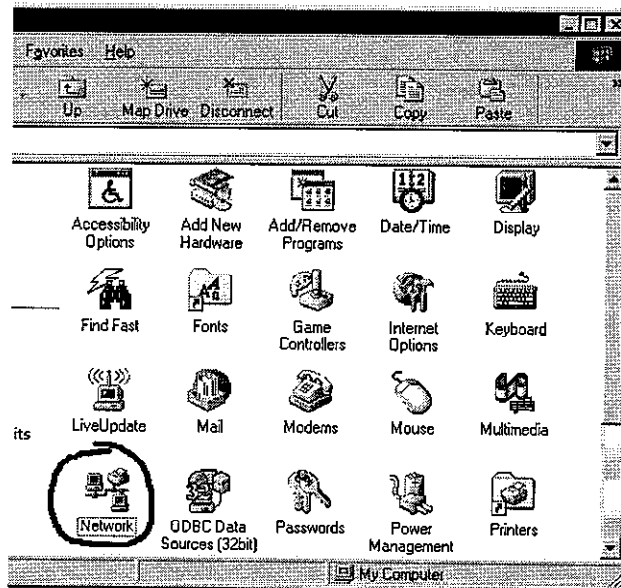
Step 1. Configure TCP/IP Settings

After you have completed the hardware setup by connecting your devices, you need to configure your computer to connect to your Barricade Plus. You need to determine how your ISP issues your IP address. Many ISPs issue these numbers automatically using a networking technology known as Dynamic Host Configuration Protocol, or DHCP. Other ISPs will specify your IP address and associated numbers, which you must enter manually. This is also known as a static IP address. How your ISP assigns your IP address determines how you will configure your computer.

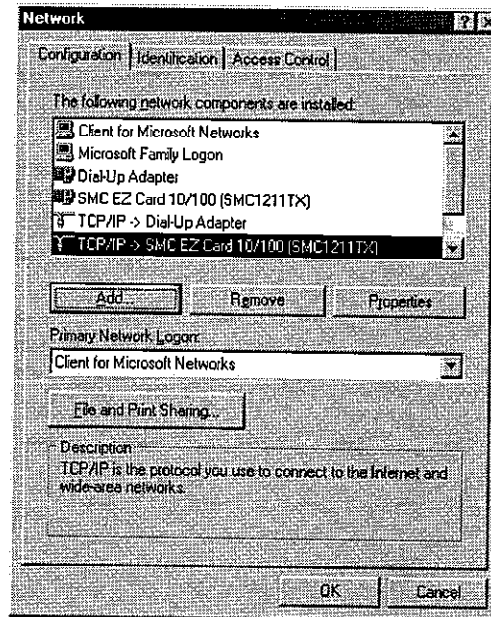
1. From the Windows desktop, click the "Start" button. Choose "Settings," then click "Control Panel."



2. From "Control Panel," double-click the "Network" icon.



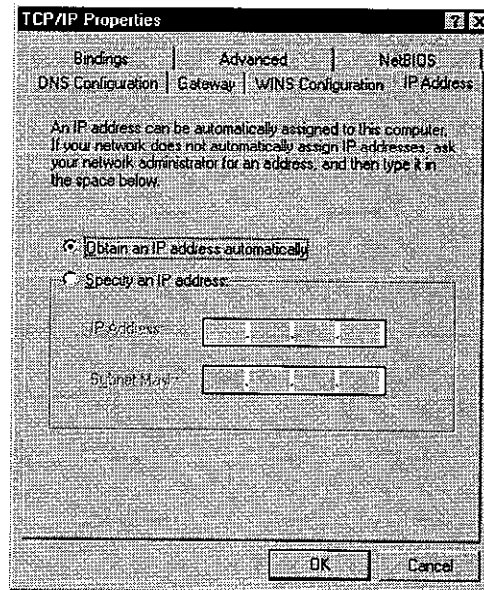
3. In the "Network" window, under the "Configuration" tab, double-click the "TCP/IP" entry that is listed with your network card.



SETTING TCP/IP TO WORK WITH THE BARRICADE PLUS

4. Select the "IP Address" tab.

If "Obtain an IP address automatically" is already selected, your computer is already configured for DHCP. Click "Cancel" to close each window, and skip to Step 2 "Disable HTTP Proxy."



5. Locate your IP address and Subnet Mask. Record them in the spaces provided below.

6. Click the "Gateway" tab and record the numbers listed under "Installed gateways."

