



Welcome to MetroLinq™



Interference-Free Gigabit Wireless

Unboxing

After opening the box, you will find...

- MetroLing™
- Bracket Kit
- POE Power Supply
- Power Cable

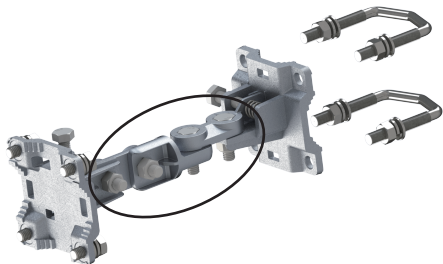
Tools/Items Required

- 13 mm Socket Wrench
- Flat-Head Screwdriver
- Ethernet Cables
- (Optional) Alignment Scope ICC-SCOPE-9x50

For helpful training and user-case information, please go to [ignitenet.com/support](https://www.ignitenet.com/support)

Assembly

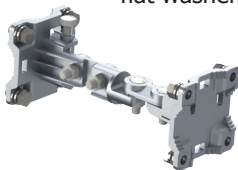
The MetroLinq™ bracket is designed for wall and pole mounting (25mm - 75mm pole diameter). Choose what is best for your location and select hardware accordingly.



1. Ensure all four position-locking bolts are tight before installing.



2. Install the bracket onto MetroLinq™ using four M8 bolts, lock washers, and flat washers.



Power Up

1. Connect an Ethernet cable from the MetroLinq™ WAN port (right-side RJ-45) to the POE port on the power supply.

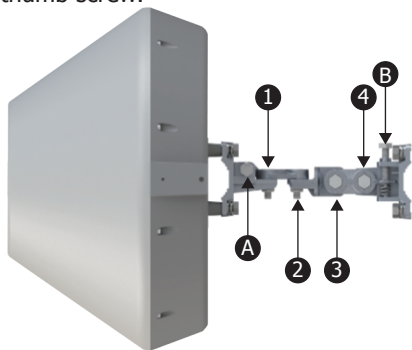
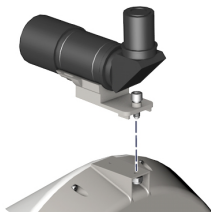


2. Connect Ethernet cable from the "LAN" port on the power supply to your LAN device.
3. Connect the power cord to a nearby AC power source.



Alignment

IgniteNet strongly recommends using the ICC-SCOPE-9x50 Alignment Scope for alignment. To install, place the scope on top of the MetroLinq™ housing and secure it with its thumb screw.



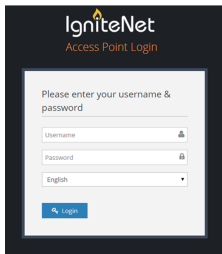
! Note: Do not adjust bolts A and B without first loosening 1 and 4 respectively.

1. Loosen coarse adjustment bolts 2 and 3 and set initial alignment. Don't worry, you don't have to be too accurate yet. After you have set the coarse alignment, tighten bolts 2 and 3.
2. Loosen the horizontal fine-tune adjustment bolt 4. Use fine-tune bolt "B" to optimize the horizontal position. Re-tighten bolt 4.
3. Loosen the vertical fine-tune adjustment bolt 1. Use fine-tune bolt "A" to optimize the vertical position. Re-tighten bolt 1.
4. Initial alignment should be based on optical or visual alignment. After you achieve this, repeat steps 2 and 3 while watching the 60 GHz signal strength LED. Optimize position to the LED indicator.
5. Ensure all bolts are fully tightened, remove the alignment scope (if installed), and enjoy Gigabit interference-free wireless.

Software

1. To configure your MetroLing, connect your computer to the LAN port on the device and configure the IP subnet to match the default IP address of 192.168.1.20. Once configured, direct your web browser to 192.168.1.20 and log in.

username: root
password: admin123



2. After you have logged in, follow the steps in the Setup Wizard to configure the device for your network.

For more configuration details and training, please go to ignitenet.com/support

150200001244A R01

FCC Statement:

Federal Communication Commission Interference Statement

This equipment has been tested and found to comply with the limits for a Class B digital device, pursuant to Part 15 of the FCC Rules. These limits are designed to provide reasonable protection against harmful interference in a residential installation. This equipment generates, uses and can radiate radio frequency energy and, if not installed and used in accordance with the instructions, may cause harmful interference to radio communications. However, there is no guarantee that interference will not occur in a particular installation. If this equipment does cause harmful interference to radio or television reception, which can be determined by turning the equipment off and on, the user is encouraged to try to correct the interference by one of the following measures:

- Reorient or relocate the receiving antenna.
- Increase the separation between the equipment and receiver.
- Connect the equipment into an outlet on a circuit different from that to which the receiver is connected.
- Consult the dealer or an experienced radio/TV technician for help.

FCC Caution: Any changes or modifications not expressly approved by the party responsible for compliance could void the user's authority to operate this equipment.

This device complies with Part 15 of the FCC Rules. Operation is subject to the following two conditions: (1) This device may not cause harmful interference, and (2) this device must accept any interference received, including interference that may cause undesired operation.

This device and its antennas(s) must not be co-located or operating in conjunction with any other antenna or transmitter except in accordance with FCC multi-transmitter product procedures.

IMPORTANT NOTE:

FCC Radiation Exposure Statement:

This equipment complies with FCC radiation exposure limits set forth for an uncontrolled environment. This equipment should be installed and operated with minimum distance 250 cm between the radiator & your body.

Antenna list:

Ant.	Brand	P/N	Antenna Type	Connector	Antenna Gain (dBi)	Cable Loss (dB)	True Gain (dBi)	Remark
1	IgniteNet	FS5-19N-120	Sector Ant. (PATCH ARRAY)	Type-N	19	1	18	External (5GHz use)
Ant.	Brand	P/N	Antenna Type	Connector	Gain (dBi)		Remark	
					Band 1	Band 4		
2	Accton	123400001084A	Dish Ant.	N/A	12.33	15.35	Internal (5G&60G use)	

Professional installation instruction:**1. Installation personal**

This product is designed for specific application and needs to be installed by a qualified personal who has RF and related rule knowledge. The general user shall not attempt to install or change the setting.

2. Installation location

The product shall be installed at a location where the radiating antenna can be kept 250 cm from nearby person in normal operation condition to meet regulatory RF exposure requirement.

3. External antenna

Use only the antennas which have been approved by the applicant. The non-approved antenna(s) may produce unwanted spurious or excessive RF transmitting power which may lead to the violation of FCC limit and is prohibited.

4. Installation procedure

Please refer to user's manual for the detail.

5. Warning

Please carefully select the installation position and make sure that the final output power does not exceed the limit set force in relevant rules. The violation of the rule could lead to serious federal penalty.