

Users' Manual

Product Name

PDA with wireless LAN 802.11b and Bluetooth

Model

n300

(Brand: acer)

Acer Incorporated

COPYRIGHT

Copyright © 2005 Acer Inc. or its subsidiaries
All Rights Reserved. Printed in Taiwan.

Acer n300 Handheld User's Guide
Original issue: September 2005

Acer and the Acer logo are registered trademarks of Acer Inc.

Microsoft, ActiveSync, Outlook, Pocket Outlook, Windows, Windows NT, and the Windows logo are either registered trademarks or trademarks of Microsoft Corporation in the United States and/or other countries. Microsoft products are licensed to OEMs by Microsoft Licensing, Inc., a wholly owned subsidiary of Microsoft Corporation.

Other company's product names or trademarks are used herein for identification purpose only and belong to their respective companies.

Changes may be made periodically to the information in this publication without obligation to notify any person of such revision or changes. Such changes will be incorporated in new editions of this User's Guide or supplementary documents and publications.

No part of this publication may be reproduced, stored in a retrieval system, or transmitted, in any form or by any means, electronic, mechanical, photocopy, recording, or otherwise, without the prior written permission of Acer Inc.

DISCLAIMER AND LIMITATION OF LIABILITY

Acer and its subsidiaries makes no representations or warranties, either expressed or implied, with respect to the contents hereof and specifically disclaims the implied warranties of merchantability or fitness for a particular purpose. Acer and its subsidiaries assume no responsibility for any damage or loss resulting from the use of this Acer n300 Handheld User's Guide.

NOTES

Record the serial number, purchase date, and place of purchase information in the space provided below. The serial number is recorded on the label affixed to your Acer n300. All correspondence concerning your unit should include the serial number, and purchase information.

Acer n300 Handheld

S/N: _____

Purchase Date: _____

Place of Purchase: _____

Federal Communication Commission Interference Statement

This equipment has been tested and found to comply with the limits for a Class B digital device, pursuant to Part 15 of the FCC Rules. These limits are designed to provide reasonable protection against harmful interference in a residential installation. This equipment generates, uses and can radiate radio frequency energy and, if not installed and used in accordance with the instructions, may cause harmful interference to radio communications. However, there is no guarantee that interference will not occur in a particular installation. If this equipment does cause harmful interference to radio or television reception, which can be determined by turning the equipment off and on, the user is encouraged to try to correct the interference by one of the following measures:

- Reorient or relocate the receiving antenna.
- Increase the separation between the equipment and receiver.
- Connect the equipment into an outlet on a circuit different from that to which the receiver is connected.
- Consult the dealer or an experienced radio/TV technician for help.

This device complies with Part 15 of the FCC Rules. Operation is subject to the following two conditions:

- (1) This device may not cause harmful interference, and
- (2) This device must accept any interference received, including interference that may cause undesired operation.

INFORMATION TO USER

To assure continued compliance, (example - use only shielded interface cables when connecting to computer or peripheral devices) any changes or modifications not expressly approved by the party responsible for compliance could void the user's authority to operate this equipment.

IMPORTANT NOTE:
FCC Radiation Exposure Statement:

This equipment complies with FCC radiation exposure limits set forth for an uncontrolled environment. This transmitter must not be co-located or operating in conjunction with any other antenna or transmitter. .

he maximum reported SAR values are: Body: 0.201 W/kg

Disposal instructions

Do not throw this electronic device into the trash when discarding. To minimize pollution and ensure utmost protection of the global environment, please recycle.



USA

For electronic products containing an LCD/CRT monitor or display:

Lamp(s) inside this product contain mercury and must be recycled or disposed of according to local, state or federal laws. For more information, contact the Electronic Industries Alliance at www.eiae.org. For lamp-specific disposal information, check www.lamprecycle.org.



About this User's Guide

Welcome to the Acer n300 Handheld User's Guide. This User's Guide is designed to help you get up and running quickly with your new Acer n300—a Microsoft® Windows Mobile™ Version 5.0 Software for Pocket PC handheld. It describes all you need to know about how to use your handheld as well as the application programs that come with it.

This User's Guide will discuss the following topics:

- A tour of the Acer n300 system
- Setup and maintenance procedures
- Taking advantage of your handheld's expansion features
- Synchronizing data between your handheld and your computer
- Connecting your handheld to a computer, a network, or the Internet
- Personalizing your handheld with your own preference settings

This User's Guide introduces you to the many ways your Acer n300 can help you organize and manage both business and personal information to make your everyday activities a more productive and satisfying experience.

First things first


We would like to thank you for making Acer n300 your choice for your handheld needs. Your new sleek Acer n300 is a multi-functional tool packed with user-friendly features and high-performance applications designed to make organizing work-related information and synchronizing it with your personal activities a time-efficient task. We hope you enjoy using your Acer n300 as much as we enjoyed creating it for you.

Use your Acer n300 to effectively manage information related to both business and personal tasks.

- Software installation and new applications
- Use the Microsoft® Windows Mobile™ Version 5.0 software to perform organizing and computing tasks
- Synchronize the information on your computer with the information on your handheld using Microsoft® ActiveSync®
- Get connected to the Internet with the Microsoft® Pocket Internet Explorer
- Create an on-the-go backup file
- Expand your handheld's capabilities using the built-in SD/MMC slot
- Exchange information between devices that have Bluetooth® / WLAN(optional) capabilities.
- Customize your handheld based on your personal requirements and preferences

Your guides

To help you use your Acer n300, we have designed a set of guides:

For information on:	Refer to:
Programs on your handheld	This User's Guide. Bundled in the Acer n300 Handheld Getting Started Disk, it provides online reference for using your Acer n300. The Acer n300 Handheld Help. To view Help, tap  and then Help.
Up-to-date information regarding your handheld	http://global.acer.com/
Service enquiries	http://global.acer.com/support/index.htm

Package contents

Your Acer n300 comes packed in a cardboard box. Carefully unpack the box and remove the contents. If any of the following items are missing or damaged, contact your dealer immediately:

- Acer n300 handheld
- Stylus
- Cradle (for n311) or Sync Cable (USB Client, DC-in) (for n310)
- AC Power Adapter
- Wiper bag
- Acer n300 Handheld Quick Guide
- Acer n300 Handheld Getting Started Disk
- End User License Agreement
- International Travelers Warranty
- Battery Pack

Maintaining your Acer n300

This section provides information on the following:

- Proper care and usage of your handheld
- Resetting your handheld

Proper care and usage of your Acer n300

Your Acer n300's rugged and tough construction is designed to provide you with years of reliable and trouble-free service. Observing the following general maintenance procedures will help ensure this:

- 1 Take care not to scratch the screen of your handheld. Keep the screen clean. When working with your handheld, use the supplied stylus or plastic-tipped pens intended for use with touch-sensitive screens. Never use an actual pen or pencil or other sharp object on the screen surface.
- 2 Your handheld is not waterproof and should not be exposed to rain or moisture. Under extreme conditions, water may enter the circuitry through the front panel buttons or expansion slots. In general, treat your handheld as you would a pocket calculator or other small electronic device.
- 3 Take care not to drop your handheld or subject it to any strong impact. Do not place your handheld in your back pocket; if you sit on it, you may damage it.
- 4 Protect your handheld from temperature extremes. For example, do not leave your handheld on the dashboard of a car on a hot day or on a day when temperatures are below the freezing point. Also, keep it away from heaters and other sources of heat.
- 5 Do not use or store your handheld in any location that is extremely dusty, damp or wet. Always use the (included) SD dummy card to protect the connectors when not in use.
- 6 Use a soft, damp cloth to clean your handheld. If the surface of the screen becomes soiled, clean it with a soft cloth moistened with diluted window-cleaning solution.

Resetting your Acer n300

You may have to perform a reset if your handheld no longer responds to the buttons on the screen.

Performing a soft reset

A soft reset allows your handheld to get a fresh start, similar to rebooting a computer. All records and entries are retained after a soft reset.

To perform a soft reset:

- Using the tip of your stylus, lightly press the reset button inside the hole on the bottom of your handheld.



Performing a hard reset

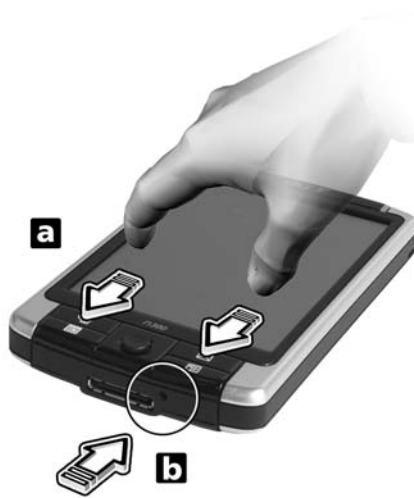
A hard reset will erase all records and entries stored in your handheld. Never perform a hard reset unless a soft reset does not correct your problem. When you perform your next ActiveSync® operation, you can restore any data that you previously synchronized to your computer. To perform a hard reset:

1. Press and hold the Today and Messaging (a) buttons on your Handheld.

First things first

Maintaining your Acer n300

2. While holding the Today and Messaging buttons (**a**), Using the tip of your stylus, lightly press the reset button inside the hole (**b**) on the base of your handheld.



NOTE: When you perform a hard reset, formats, preferences, and other settings including date and time are restored to their factory default settings. **All data, records, and entries, except for those stored in the ROM storage, will be erased.**

Contents

Disposal instructions	iii
About this User's Guide	iv
First things first	v
Your guides	v
Package contents	vi
Maintaining your Acer n300	vi
Proper care and usage of your Acer n300	vi
Resetting your Acer n300	vii
1 Getting started	1
System requirements	1
Features summary	1
Performance	1
Display	1
Audio	2
Proprietary 26-pin I/O connector	2
Connectivity	2
Expansion	2
Battery	2
Design and ergonomics	2
Acer n300 tour	3
Front view	3
Left view	4
Top view	5
Bottom view	6
Rear view	7
Preparing to use your Acer n300	7
Installing the Microsoft® ActiveSync® software	8
Connecting the computer	8
Charging your Acer n300	9
Setting up your Acer n300	11
Performing the first synchronization process	12
Command interface	14
Handheld buttons and the stylus	14
Today screen	14
Start menu	15
Command bar	15
Pop-up menus	16
Online help	16
2 Backup and restore data	19
Backup function	20
Restore function	20

3 Using expansion features	23
Using an SD/MMC card	23
Inserting an SD/MMC card	23
Removing an SD/MMC card	24
Using an USB thumb drive	24
Inserting an USB thumb drive - Through the Cradle	24
Inserting an USB thumb drive - Through the 3-in-1 Sync cable (optional accessory)	24
4 Getting connected	25
Transferring items using Bluetooth®	25
Connecting to the Internet	26
To create a modem connection to an ISP	26
To create a connection to an ISP over Bluetooth®	26
To create a wireless Ethernet connection to an ISP	27
Connecting to a network	28
To create a modem connection to a network	28
To create a wireless Ethernet connection to a network	28
To create a connection to a network over Bluetooth®	28
Get help on connecting	29
Appendix A: Regulation & safety notices	31
FCC notice	31
Notice: Shielded cables	31
Notice: Peripheral devices	31
Caution	32
Operation conditions	32
Notice: Canadian users	32
Remarque à l'intention des utilisateurs canadiens	32
Declaration of Conformity for EU countries	32
Important safety instructions	33
LCD pixel statement	34
Radio device regulatory notice	34
General	34
European Union (EU)	34
List of applicable countries	35
The FCC RF safety requirement	35
Canada — Low-power license-exempt radio communication devices (RSS-210)	35
Exposure of humans to RF fields (RSS-102)	35

1 Getting started

This chapter will discuss the following topics:

- Basic requirements
- Feature highlights of your Acer n300
- Acer n300 system tour
- Step-by-step procedures on how to prepare your handheld for use
- Basic concepts in using your handheld

System requirements

In order to install the Microsoft® ActiveSync® software and use your new Acer n300 with a computer at work or at home, be sure the system(s) meet the following minimum system and program requirements.

- Intel® Pentium® processor (minimum 233 MHz)
- 64 MB RAM
- 120 MB disk space
- CD-ROM drive
- USB port
- SVGA (or compatible) graphics card supporting 256 colours
- Microsoft® Windows® XP, 2000
- Microsoft® Internet Explorer 4.01

Features summary

Performance

- Samsung S3C2440 processor at 300/400 MHz
- System memory:
 - 64 MB mobile SDRAM
 - 64 MB / 128 MB of flash memory for operating system, embedded applications, user applications and storage
- Microsoft® Windows Mobile™ Version 5.0 Software for Pocket PC, Premium Edition with Microsoft® Outlook® 2002

Display

- 3.7" high-brightness transfective TFT LCD
- 480 x 640 (VGA) resolution
- 65,536 colors

1 Getting started

Features summary

Audio

- Built-in industry standard 3.5 mm stereo earphone jack , 3 ring type
- Built-in mono speaker
- Built-in mono microphone

Proprietary 26-pin I/O connector

- USB Host (female)
- USB Client (male)
- Serial
- DC power in

Connectivity

- Bluetooth® 1.2
- IEEE 802.11b WLAN

Expansion

- SD/MMC slot (SDIO compatible)
- USB Host 1.1

Battery

- Rechargeable 1200 mAH Lithium ion battery
- 8 hours operation time for normal usage (when backlight is inactive)


NOTE: Length of battery operation will depend on power consumption which is based on system resource use. For example, constantly using the backlight or using power-demanding applications will shorten battery life between charges.

- 3 hour charging time from empty to full capacity

Design and ergonomics

- Stylish, light and thin design

Specifications	Dimensions
Height	110 mm
Width	70 mm
Depth	13.7 mm
Weight	135 g (including stylus)

- User-friendly navigation features
 - 5-way joystick for one-handed operation
 - Quick buttons for easy launch of commonly-used applications
 - Start  button for one-tap access to all available applications

Acer n300 tour

Front view



No.	Component	Description
1	Power / Bluetooth® / 802.11b WLAN LED indicator	Power LED indicator. - status description: <ul style="list-style-type: none">Flashing green - ChargingSteady green - Charging completeFlashing red - Alarm indicator, receiving email Bluetooth® / 802.11b WLAN LED indicator. - status description: <ul style="list-style-type: none">Flashing blue - Bluetooth® / 802.11b WLAN is on
2	3.7" TFT LCD	Displays the applications and data stored in your handheld.
3	Quick button for Today	Displays the Today screen.
4	Quick button for Messaging	Activates the Messaging program.
5	Built-in microphone	Inputs audio into your handheld.

1 Getting started

Acer n300 tour

No.	Component	Description
6	Quick button for Calendar	Activates the Calendar program.
7	Directional joystick	Enables 5 direction scrolling in various menus and applications. Press the center of the joystick on to simulate the function of the Enter key.
8	Quick button for Contacts	Activates the Contacts program.

NOTE: If your handheld is turned off, pressing any Quick button turns on the handheld and opens the program assigned to that button.

Left view



No.	Label	Description
1	Power button	Press to turn on your handheld on (power LED lights up green) if it is off and returns to the last screen that was displayed and off if it is on.
2	Hold switch	Slide to lock all buttons from being accidentally pressed when handheld is placed in pocket or bag. A red dot is visible on the hold switch when in hold state.

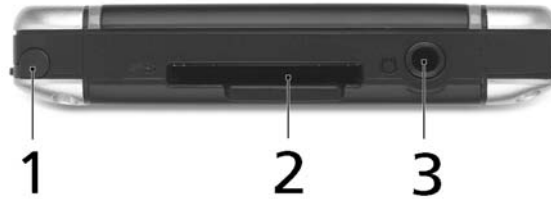
Using the backlight


If lighting conditions make it difficult for you to see the information on your handheld, use the backlight to illuminate your screen.

To activate the backlight:

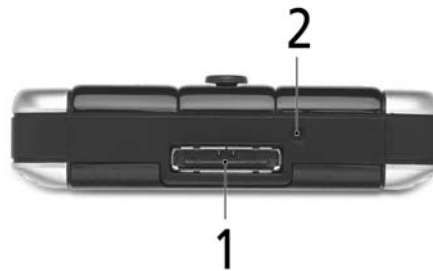
- Press the power button and hold it down for about two seconds. Release the button when the backlight turns on.
- To turn off the backlight, press the power button and hold it down for two seconds. Release the button when the backlight turns off.

Top view



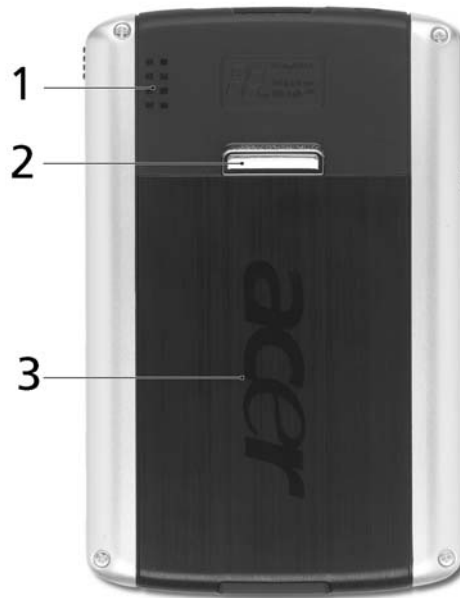
No.	Label	Description
1	Stylus holder	Secures the stylus to your handheld. To use the stylus, remove from its holder and hold it as you would hold a pen or pencil.
2	SD/MMC slot	Accepts a Secure Digital or MultiMedia Card, allowing you to add more memory, install add-on applications or use audio or text files stored on it with internal applications. You can also use expansion cards to back up data from your handheld.
3	Earphone jack 	Connects to audio line-out devices (earphones/headphones).

Bottom view



No.	Label	Description
1	Proprietary 26-pin I/O connector	Connects your handheld to a portable or desktop computer and DC power supply to an AC wall outlet to charge the battery. - USB Host - USB Client - Serial - DC power in
2	Soft Reset	Using the tip of your stylus, lightly press the reset button inside the hole on the bottom of your handheld.

Rear view



No.	Label	Description
1	Speaker	Outputs audio from your handheld.
2	Battery access latch	Unlatches the battery to remove the battery pack.
3	Battery bay	Houses the handheld's battery pack.

Preparing to use your Acer n300

Perform the following easy installation tasks to begin using your handheld:

- Charge your handheld
- Set up your handheld
- Install the Microsoft® ActiveSync® software in your computer
- Connect n300 to your computer
- Perform the first ActiveSync operation

Installing the Microsoft® ActiveSync® software

The main function of the Microsoft® ActiveSync® software is to synchronize the information on your computer with the information on your handheld. Synchronization compares the data on your handheld with your computer and updates the information on both locations. This will then serve as a backup data in case something happens to your handheld.


The following instructions tell you how to install the ActiveSync® software.

Important installation notes

- Before installing ActiveSync®, make sure that your handheld cradle is not yet connected to your computer. Connect the cradle only after you have finished installing ActiveSync.
- If you don't have Microsoft® Outlook® 98 or later installed, please install Microsoft® Outlook® 2002 now. Even if you have Outlook® 98 or Outlook® 2000 installed, you are encouraged to upgrade to Outlook® 2002.
- It is recommended that users install Outlook® 2002 from this CD before installing ActiveSync®.
- Do not copy the ActiveSync® files to your computer's hard disk. You must use the Acer n300 Handheld Getting Started Disk to place the files in their proper locations and to decompress the files.

To install the Microsoft® ActiveSync® software

- 1 Exit any open programs, including those that run at startup, and disable any virus-scanning software.
- 2 Insert the Acer n300 Handheld Getting Started Disk into the computer's CD-ROM drive.
The CD's welcome page appears.
- 3 Click the animated forward icon to go to the next screen.
- 4 Click the Start Here tab on the right side of the screen.
- 5 Read the instructions and installation notes indicated on the Start Here screen.
- 6 Click the buttons on the left pane to install each of the individual applications.
 - Outlook® 2002 (recommended)
 - ActiveSync® 4.1

After installation, the ActiveSync® icon  will appear on your computer's system tray (on the lower right-hand corner of the screen).

Refer to the ActiveSync® software online Help for information on how to use the software. If at any time, you would like to restart this setup program, simply re-insert the CD into the CD-ROM drive.

Connecting the computer

The USB sync cable or cradle that comes with your handheld enables you to synchronize the information on your handheld with the data in your computer using ActiveSync® technology.

To connect the computer

Connecting the USB Sync cable

- 1 Plug the sync cable into the 26-pin I/O connector on the base of your handheld.
- 2 Plug the AC adapter into any AC current outlet.
- 3 Plug the USB client connector into an available USB port on your computer.



Connecting the Cradle

- 1 Connect the AC adapter cord to the power socket at the back of the cradle.
- 2 Plug the AC adapter into any AC current outlet.
- 3 Plug the USB client connector into an available USB port on your computer.



Charging your Acer n300

For initial use, you need to charge your handheld for three hours. After that, you can charge it for a few minutes each day to recharge the battery to full capacity. Normally,

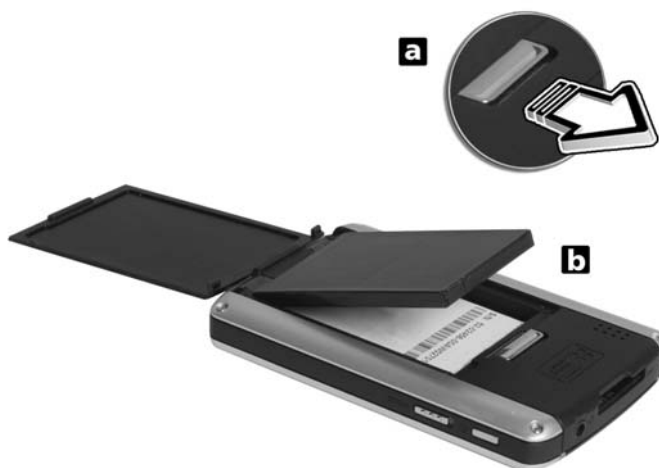
1 Getting started

Preparing to use your Acer n300

you can use your handheld for 8 straight hours of operation (backlight inactive) before you need to recharge the battery.

To charge your Acer n300

Slide the battery access latch up (a) and lift the battery cover, then slide the battery pack into the battery bay (b), then close the battery cover to lock the battery pack.



NOTE: To take the battery pack out, first unlock the battery access latch to open the battery cover, then pull the battery pack out of the bay.

Connecting the Sync cable

- 1 Plug the sync cable into the 26-pin I/O connector on the bottom of your handheld.
- 2 Plug the AC adapter into any AC current outlet and charge the device for at least 4 hours.



Connecting the Cradle

- 1 Connect the AC adapter cord to the power socket at the back of the cradle.
- 2 Plug the AC adapter into any AC current outlet and charge the device for at least 4 hours.



Power LED status during charging:

- Charging - LED indicator flashes green
- Charging complete - LED indicator steady green

If the battery level becomes low in the course of normal use, a status icon appears on the handheld screen indicating low or very low battery status. Perform an ActiveSync[®] operation to back up your data; then recharge the battery.

If your handheld shuts down (i.e., battery is completely drained out) you have about 72 hours (3 days) to recharge the battery before you lose all data on your handheld's internal memory.

Setting up your Acer n300

After you have initially charged your handheld for four hours, you can now set it up. Refer to the instructions below.

1 Getting started

Preparing to use your Acer n300

To set up your Acer n300

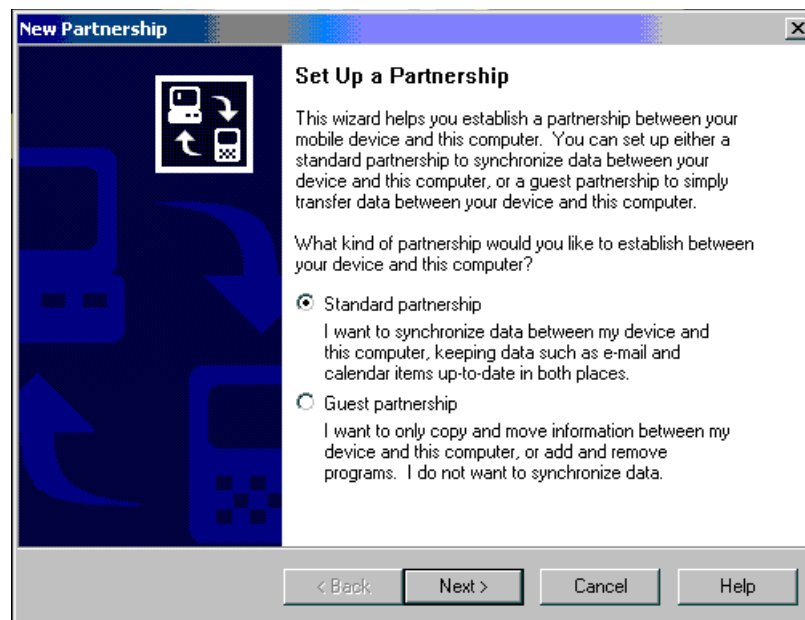
- 1 Turn on your handheld by pressing the power button on the left side.



- 2 Follow the onscreen instructions to set up your handheld.

Performing the first synchronization process

After completing the setup procedures you can now perform the first ActiveSync® operation with the help of the 'New Partnership' setup wizard.



This wizard will help you:

- Set up a partnership so you can synchronize information between your handheld and your computer
- Customize your synchronization settings

To perform the first synchronization process

- 1 Connect the sync cable to your handheld.
- 2 Plug the USB client connector into a USB port on your computer.
The 'New Partnership' setup wizard will automatically start on your computer screen.




NOTE: If the wizard does not automatically appear, launch ActiveSync® on your computer by clicking on its icon from Start>Programs.

- 3 Follow the onscreen instructions.
The first synchronization process will automatically begin when you finish using the wizard.
After your first synchronization, take a look at Calendar, Contacts, and Tasks on your handheld. You'll notice that information you've stored in Microsoft Outlook on your

1 Getting started

Command interface

computer has been copied to your handheld, and you didn't have to type a word. Disconnect your handheld from your computer and you're ready to go!

Once you have set up ActiveSync® and completed the first synchronization process, you can initiate synchronization from your handheld. To switch to ActiveSync® on your handheld, tap , and then tap ActiveSync® .

Command interface

Handheld buttons and the stylus

Your handheld has hardware buttons that control actions and scroll functions, and a stylus for selecting items and entering information.

On your handheld, the stylus replaces the mouse.


- Tap. Touch the screen once with the stylus to open items and select options.
- Drag. Hold the stylus on the screen and drag across the screen to select text and images. Drag in a list to select multiple items.
- Tap and hold. Tap and hold the stylus on an item to see a list of actions available for that item. On the pop-up menu that appears, tap the action you want to perform.

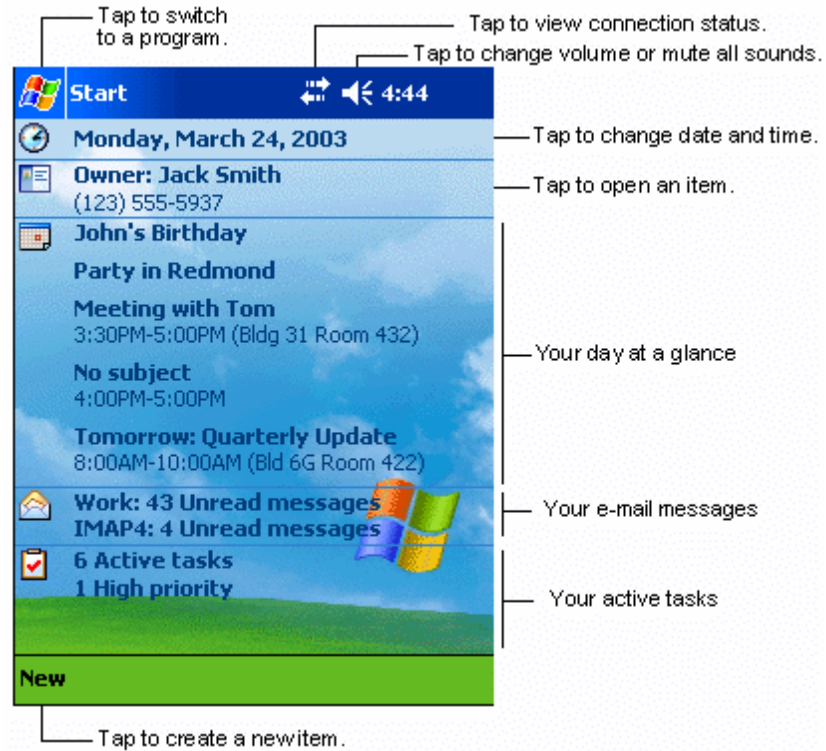
Today screen

The center of the Today screen provides, at a glance, information that you need for the day. Tap an item to view or edit details.


At the top to the screen are status icons. Tap an icon to view details or change options. These icons appear at the top of every screen on your handheld device, not just the Today screen.

When you turn on your handheld device for the first time each day, or after hours of inactivity, the Today screen is displayed.

You can also display it by tapping  and then Today.



Start menu

From the Start menu, you can select programs, settings and Help topics. To display the Start menu, from the top of any screen tap .

Command bar

At the bottom of the screen is the command bar. You can use its menus and buttons to perform tasks in programs. Depending upon which program you are using, the buttons may vary from those depicted below.

- To create a new item in the current program, tap New.

1 Getting started

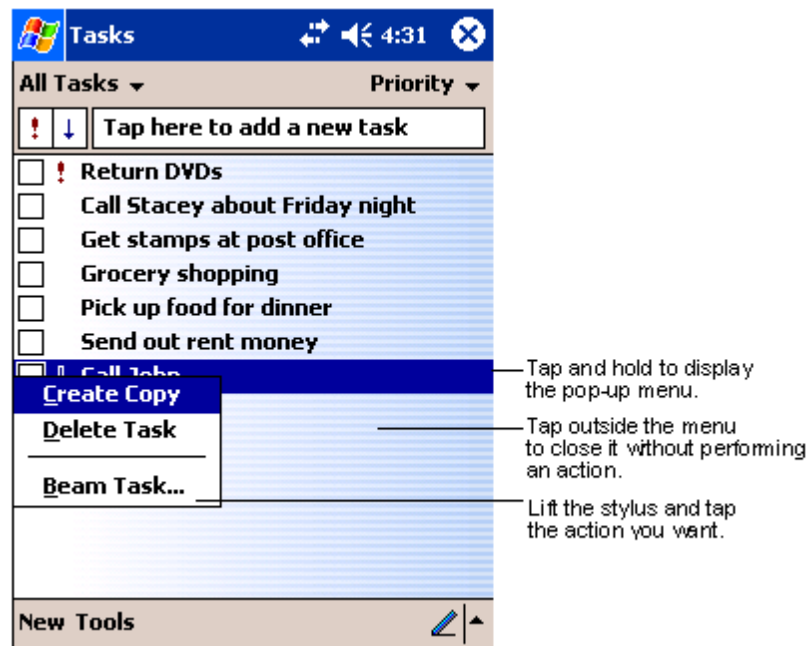
Command interface

- To see the name of a button, tap and hold the stylus on the button. Drag the stylus off the button so that the command is not carried out.



Pop-up menus

You can use pop-up menus to quickly select an action for an item.



Online help

Refer to the software online Help for information on how to use the software. Please press Start>Help>Content for the online help.

Microsoft® Help

- Outlook® Mobile - Organize personal information: calendar, contacts, tasks, notes and messaging
- Word™ Mobile - Word processing application compatible with Microsoft® Word
- Excel™ Mobile - Spreadsheet application compatible with Microsoft® Excel

- PowerPoint™ Mobile - View presentation slides (compatible with Microsoft® PowerPoint)
- Windows® Media™ Player 10 Mobile - Play back multimedia files: MP3, Windows® Media audio, Windows® Media video, and streaming video files
- Internet Explorer Mobile - Browse websites and download files and images
- Calculator - Easy-to-use calculator
- Games - Enjoy playing classic Solitaire and Bubble Breaker.
- File Explorer - Manage files in main memory or on storage media cards
- Microsoft® ActiveSync® 4.0 - Synchronize PIM data with Microsoft® Outlook®
- Pictures & Videos - View pictures and videos
- Lunar View - View the Chinese lunar calendar
- Pocket MSN - Provide instant access to your Hotmail account, and MSN Messenger Contacts list
- Terminal Services Client - Run applications or remotely manage a server from the Pocket PC

Bluetooth® Help

- Bluetooth® setting - Easily configure Bluetooth® options

Wireless LAN Help

- Wireless LAN setting - Easily configure wireless LAN options

1 Getting started

Command interface

2 Backup and restore data

Backup/Restore enables you to back up data files and applications from your handheld to a storage device and to restore data to your handheld. Advanced security features offer password protection for sensitive documents/applications during Backup and/or Restore operations. The expansion features of your handheld allow you to use any of the following storage devices:

- SD Card (Secure Digital Card)
- MMC card
- USB thumb drive

During a backup or restore operation, the power button serves as a pause/resume button to control the pace of the operation.


There are two tabs (from left to right) in the program window corresponding to the two functions of Backup and Restore.

- Backup
- Restore

To launch Backup/Restore:

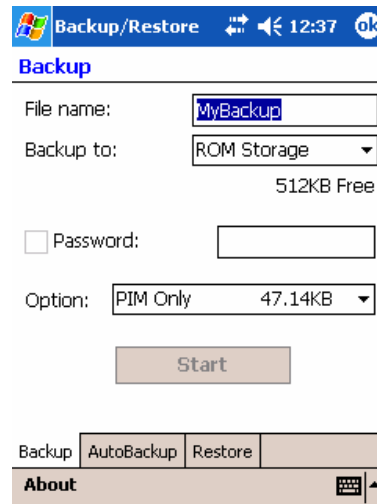
- 1 Insert a storage device (SD/MMC card or USB thumb drive) if you want to do backup/restore operation on a storage device.

For instructions on how to insert storage devices, please refer to "3 Using expansion features" on page 23.

- 2 Tap , Programs, and then Backup/Restore.

2 Backup and restore data

Backup function



To perform data backup

- 1 Close all running programs except for Backup/Restore.
- 2 In the Backup tab, choose whether to accept the default filename (MyBackup) or type a new one by tapping on the keyboard icon on the bottom of the screen.
- 3 Select a storage device from the 'Backup to' pull-down menu.
- 4 Define the backup scope (default: PIM only) from 'Option' pull-down menu.
- 5 Check the password box and enter a password if you want to secure the backup file.
- 6 Tap Start to proceed with the backup process.
During the backup process, a progress screen will appear displaying backup status.
- 7 When the backup process is completed, a message box appears, saying that backup operation is completed.

Restore function

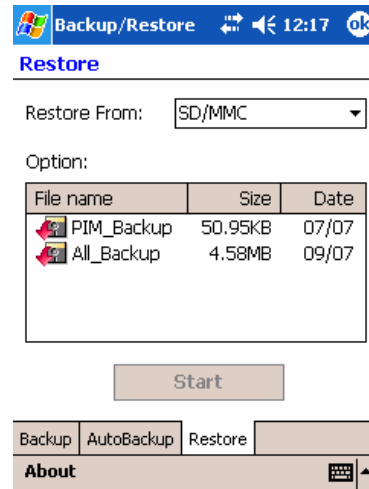
You can only restore backup files that are generated by Backup/Restore; file format is *.abk (Acer backup).

To perform data restoration

- 1 Close all running programs except for Backup/Restore.

- 2 Select a source storage device from the 'Restore from' pulldown menu.

The lower half of the screen will display a list of files contained in the selected storage device. Filename, file size and date when the backup file was created are indicated in the list.



- 3 Tap a filename to select the file you wish to restore, and please note that non-.abk files are not shown.

Select file, then tap "start" button. The window will shift to display the backup file information including:

- File name - filename of the selected .abk file.
 - Backup date - date when the selected .abk file was created.
 - Backup option & file size.
 - Main memory free size - free space in your handheld's main storage memory. This should be bigger than the file size of the selected .abk file for the restore process to continue.
- 4 Tap Start again to proceed with the restore process.
 - 5 During the restore process, a progress screen will appear displaying restore status.
 - 6 When the restore process is completed, a message box appears, saying restore operation is complete.

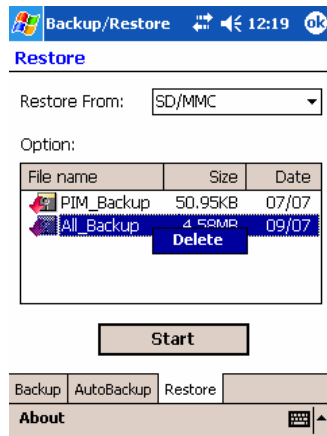
To delete a file from a storage device

To increase the size of available free space in a storage device, you can delete files that you no longer need.

- 1 Tap the Restore tab.
- 2 Tap a menu item to select a storage device.
- 3 From the list, tap a filename until a delete pop-up menu is displayed.

2 Backup and restore data

- 4 Tap Delete to remove the file.



3 Using expansion features

The slim and lightweight design of your Acer n300 belies its impressive expansion features . These expansion features include:

- SD/MMC slot
- USB host port via sync cable

These expansion features allow you to:

- Install additional applications
- Increase storage capacity
- Perform backup procedures

NOTE: When using any peripheral device with your handheld, please refer to the documentation accompanying each device for information on how to install and operate it.

Using an SD/MMC card

On the top side of your handheld is an SD/MMC slot. This allows you to expand your handheld memory and perform data backup.

Refer to "Top view" on page 5 for the location of the SD/MMC slot.

Inserting an SD/MMC card

- 1 Hold your handheld securely.
- 2 Insert the SD/MMC card into the SD/MMC slot.



3 Using expansion features

Using an USB thumb drive

- 3 Push the card into the slot using your finger until you feel the card lock and hear an audible system sound. This indicates that the card is properly seated within the slot.

Removing an SD/MMC card

- 1 Hold your handheld securely.
- 2 Release the card from the slot by using your thumb to push against the top of the card, as if you were pushing it further into the slot **(a)**. An audible system sound and a click will signal that the card has been released.



- 3 Gently remove the card from the slot **(b)**.

Using an USB thumb drive

Your Acer n300 supports USB host expansion. Via cradle or sync cable, you can access a USB thumb drive directly from your n300.

Inserting an USB thumb drive - Through the Cradle

- 1 Connect the AC adapter cord to the power socket at the back of the cradle.
- 2 Plug the AC adapter into any AC current outlet.
- 3 Insert the USB thumb drive into USB host port of Cradle.

Inserting an USB thumb drive - Through the 3-in-1 Sync cable (optional accessory)

- 1 Plug the sync cable into the 26-pin I/O connector on the bottom of your handheld.
- 2 Plug the AC adapter into any AC current outlet.
- 3 Insert the USB thumb drive into USB host port of sync cable.

4 Getting connected

You can use your handheld to exchange information with other mobile devices as well as your computer, a network, or the Internet. You have the following connection options:

- Connect to your Internet service provider (ISP). Once connected, you can send and receive email messages by using Inbox and view Web or WAP pages by using Microsoft® Pocket Internet Explorer.
The communication software for creating an ISP connection is already installed on your handheld. Your service provider will provide software needed to install other services, such as paging and fax services.
- Connect to the network at your company or organization where you work. Once connected, you can send and receive email messages by using Inbox, view Web or WAP pages by using Microsoft® Pocket Internet Explorer, and synchronize with your computer.
- Connect to your computer to synchronize remotely. Once connected, you can synchronize information such as your Pocket Outlook information.

Transferring items using Bluetooth®

Using Bluetooth®, you can send and receive information, such as contacts and appointments to/from other Bluetooth® -enabled devices.

Your n300 will receive all incoming Bluetooth® beams and asks you after the transmission has been established whether you wish to accept those beams.

To know whether Bluetooth® is on, check the Bluetooth® LED. The flashing Bluetooth® LED indicates Bluetooth® is on. There are only two modes - flashing or off, for Bluetooth® LED.

To send information via Bluetooth®

- 1 Switch to the program where you created the item you want to send and locate the item in the list.
- 2 Tap-and-hold on the item and from the pop-up menu, tap send via Bluetooth®.
- 3 On the Select a Bluetooth® device screen, tap the name of the destination device, and then tap OK.

To receive information via Bluetooth®


- 1 Make sure that Bluetooth® is enabled, and File Transfer service is also enabled.
- 2 Have the owner of the sending device transmit the information to you. Your handheld will automatically receive it. Note that if Authorization required or Authentication (Passkey) required is checked in the File Transfer service Tab, you will be prompted to accept or enter passkey before allowing transmission.

Connecting to the Internet


To create a modem connection to an ISP

- 1 Obtain the following information from your ISP:
 - ISP server telephone number
 - User name and password
 - TCP/IP settings
- 2 Insert a SD/MMC Modem card (purchased separately) into your handheld's SD/MMC slot.

NOTE: For instructions on inserting and using a SD/MMC Modem card, see the documentation that came with the card.


- 3 Tap  and then Settings.
In the Connections tab, tap Connections. Under My ISP, select Add a new modem connection.
- 4 Enter a name for the connection, such as "My Connection."
- 5 In the Select a modem list, select your modem type.
If your modem type does not appear, try re-inserting the modem card.
- 6 You should not need to change any settings in Advanced. Most ISPs now use a dynamically-assigned address. If the ISP you are connecting to does not use a dynamically-assigned address, tap Advanced and then the TCP/IP tab, and enter the address. When finished, tap OK and then Next.
- 7 Enter the ISP phone number, and tap Next.
- 8 Enter your username, password and domain (if any), and tap Finish to complete the process.
To connect to your ISP, open the Connections main window and tap Manage Existing Connections. Tap and hold on the applicable dial-up settings and select Connect. Your modem will dial-out and attempt to create the connection.

To create a connection to an ISP over Bluetooth®

If you have access to a cellular phone with Bluetooth® support, you can connect to online resources using your phone as a modem over a Bluetooth® link. To configure your handheld to do this, select Add a New Modem Connection from the My ISP after tapping  and then Settings then Connections icon in the Connections tab.

- 1 Notice the Bluetooth® modem selection available in the Make New Connection wizard. Choose an appropriate name for the connection so as to distinguish it from standard modem connections.
- 2 You will be asked to select a Bluetooth® phone or select New... to find a new phone. Once a Bluetooth® -enabled phone has been found, highlight its name and press Next.

- 3 Check your cellular phone's instruction manual to determine screen inputs for the forthcoming Bluetooth® bonding screens. On your n300, you will be asked to enter the PIN selected on your cellular phone. Both PINs must match or bonding will fail.
- 4 Select a name for the Bluetooth® bond. Select Finish to exit wizard.
- 5 Now you will be presented with a prompt to enter the dialing string to be used in conjunction with your cellular phone. Consult your cellular phone provider to obtain this string.

To connect using your new Bluetooth® connection, tap the Connections icon in the notification area and then click the link showing the dialing string you entered for the Bluetooth® connection. Your handheld will attempt to connect to your cellular phone. Confirm that you are wanting to connect with the cellular phone, and momentarily you will see the  icon in the notification tray upon successful connection.



To create a wireless Ethernet connection to an ISP

- 1 Insert the wireless Ethernet card into your handheld. For instructions on inserting and using the Ethernet card, see the documentation that came with the card.
- 2 The first time you insert the card, a notification will appear, asking you whether the installed network card should be used to connect to **The Internet** or **Work**. Where possible, the Service Set Identifier (SSID) will be determined automatically. Select **The Internet**, then either accept all default settings by tapping **OK** (most home networks will allow you to immediately get online without further configuration) or tap **Settings** to configure the connection. Sometimes a network will require a WEP key. If so, you will be prompted for one at this point.
- 3 Select the Advanced tab from the Connections Settings. Select the **Network Card** tab to customize how each of your installed network card drivers connects. Highlight the driver name of the card you wish to configure. Indicate whether **My network card connects to: The Internet**. Tap on the name of the driver to receive advanced options.
- 4 Configure the IP address settings in the **IP Address** tab.
- 5 Configure the DNS and WINS settings in the **Name Servers** tab.
You must remove then reinsert your network card for these settings to take effect.
- 6 Select the **Network Card** button from **Connection Settings-Advanced** to configure your wireless networks. Networks that you have already configured are preferred networks and are listed in the **Wireless** tab. You can select to connect to only preferred networks or have your handheld search for and connect to any available network whether it is preferred or not. Press **Add New Settings...** if you do not see a network you'd like to connect to.
- 7 In the **General** tab you can set the network name (also known as SSID); this is only editable if you are creating a new wireless network profile else you are viewing a preferred network and the SSID has already been established. Indicate whether this network will connect you to **The Internet**. Finally, if this is a new network profile, you can indicate whether this is a computer-to-computer network.

4 Getting connected

Connecting to a network

NOTE: To determine if authentication is needed, check your network administrator.

- 8 To view your wireless network connection after the preceding steps have been followed, press the  icon in the notification area. A green status indicator will show how strong your signal is. Tapping Turn Wireless Off will turn off your network card radio. Pressing the  icon will then allow you to Turn Wireless on. Once your network card has been configured, you will immediately be connected.

Connecting to a network

If you have access to a network at work, you can send email messages, view Intranet pages, synchronize your handheld, and access the Internet. You can connect to a network in one of three ways:

- Create a modem connection by using an RAS account.
- Use an wireless Ethernet card and a net tap to connect to the network.
If this is the method you want to use, see "To create an wireless Ethernet connection to a network" on page 28.
Your n300 handheld supports a SD wireless Ethernet card or a SD Modem card.
- Create a Bluetooth® connection to a cellular phone as a modem with Bluetooth® support.

To create a modem connection to a network

Follow the instructions stated in "To create a modem connection to an ISP" section, but select **Add a new modem connection** under **My Work Network** to begin.

To create a wireless Ethernet connection to a network

Follow the instructions stated in "To create a wireless Ethernet connection to an ISP" section, but connect to Work under notification bubble to begin.

To create a connection to a network over Bluetooth®

Follow the instructions stated in "To create a connection to an ISP over Bluetooth®" section, but **Add a new modem connection** from work under connection tab.

End a connection


To disconnect, do one of the following:

- When connected via a wireless (Ethernet) card, remove the card from your handheld.

- When connected via Bluetooth®, turn off Bluetooth® to terminate connection.

Get help on connecting

More information on the procedures described here, as well as information on additional procedures, can be found in the following locations:

- The section on "Messaging" on page 42.
- Online Help of your handheld. Tap  and then Help. Tap View, All Installed Help, and then Inbox or Connections.
- ActiveSync® Help on the your computer. In ActiveSync®, click Microsoft® ActiveSync® Help on the Help menu.
- For troubleshooting information, see the Pocket PC Web site at (<http://www.microsoft.com/mobile/pocketpc/>).

4 Getting connected

Connecting to a network

Appendix A: Regulation & safety notices

This appendix lists the general notices of your PDA.

FCC notice

This device has been tested and found to comply with the limits for a Class B digital device pursuant to Part 15 of the FCC rules. These limits are designed to provide reasonable protection against harmful interference in a residential installation. This device generates, uses, and can radiate radio frequency energy and, if not installed and used in accordance with the instructions, may cause harmful interference to radio communications.

However, there is no guarantee that interference will not occur in a particular installation. If this device does cause harmful interference to radio or television reception, which can be determined by turning the device off and on, the user is encouraged to try to correct the interference by one or more of the following measures:

- Reorient or relocate the receiving antenna.
- Increase the separation between the device and receiver.
- Connect the device into an outlet on a circuit different from that to which the receiver is connected.
- Consult the dealer or an experienced radio/television technician for help.

Notice: Shielded cables

All connections to other computing devices must be made using shielded cables to maintain compliance with FCC regulations.

Notice: Peripheral devices

Only peripherals (input/output devices, terminals, printers, etc.) certified to comply with the Class B limits may be attached to this equipment. Operation with non-certified peripherals is likely to result in interference to radio and TV reception.

Appendix A: Regulation & safety notices

Caution

Caution

Changes or modifications not expressly approved by the manufacturer could void the user's authority, which is granted by the Federal Communications Commission, to operate this computer.

Operation conditions

This device complies with Part 15 of the FCC Rules. Operation is subject to the following two conditions: (1) this device may not cause harmful interference, and (2) this device must accept any interference received, including interference that may cause undesired operation.

Notice: Canadian users

This Class B digital apparatus complies with Canadian ICES-003.

Remarque à l'intention des utilisateurs canadiens

Cet appareil numérique de la classe B est conforme à la norme NMB-003 du Canada.

Declaration of Conformity for EU countries

Hereby, Acer, declares that this PDA series is in compliance with the essential requirements and other relevant provisions of Directive 1999/5/EC. (Please visit <http://global.acer.com/products/pda/reg-pda/index.htm> for complete documents.)

Compliant with Russian regulatory certification



ME61

Important safety instructions

Read these instructions carefully. Save them for future reference.

- 1 Follow all warnings and instructions marked on the product.
- 2 Unplug this product from the wall outlet before cleaning. Do not use liquid cleaners or aerosol cleaners. Use a water-moistened cloth for cleaning.
- 3 Do not use this product near water.
- 4 Do not place this product on an unstable cart, stand or table. If the product falls, it could be seriously damaged.
- 5 This product should be operated from the type of power indicated on the marking label. If you are not sure of the type of power available, consult your dealer or local power company.
- 6 Do not allow anything to rest on the power cord. Do not locate this product where people will walk on the cord.
- 7 If an extension cord is used with this product, make sure that the total ampere rating of the equipment plugged into the extension cord does not exceed the extension cord ampere rating. Also, make sure that the total rating of all products plugged into the wall outlet does not exceed the fuse rating.
- 8 Never push objects of any kind into this product through cabinet slots as they may touch dangerous voltage points or short-out parts that could result in a fire or electric shock. Never spill liquid of any kind onto or into the product.
- 9 Do not attempt to service this product yourself, as opening or removing covers may expose you to dangerous voltage points or other risks. Refer all servicing to qualified service personnel.
- 10 Unplug this product from the wall outlet and refer servicing to qualified service personnel under the following conditions:
 - a When the power cord or plug is damaged or frayed.
 - b If liquid has been spilled into the product.
 - c If the product has been exposed to rain or water.
 - d If the product does not operate normally when the operating instructions are followed. Adjust only those controls that are covered by the operating instructions, since improper adjustment of other controls may result in damage and will often require extensive work by a qualified technician to restore the product to normal condition.
 - e If the product has been dropped or the case has been damaged.
 - f If the product exhibits a distinct change in performance, indicating a need for service.
- 11 The Acer PDA uses a lithium battery.
Replace the battery with the same type as the product's battery we recommend in the product specification list. Use of another battery may present a risk of fire or explosion.
- 12 **Warning!** Batteries may explode if not handled properly. Do not disassemble or dispose of them in fire. Keep them away from children and dispose of used batteries promptly.

Appendix A: Regulation & safety notices

LCD pixel statement

- 13 To avoid hazard of unexpected electrical shock, use the AC adapter only when the wall socket is properly grounded.
- 14 Do not use your PDA while exercising.

LCD pixel statement

The LCD unit is produced with high-precision manufacturing techniques. Nevertheless, some pixels may occasionally misfire or appear as black or red dots. This has no effect on the recorded image and does not constitute a malfunction.

Radio device regulatory notice

NOTE: Below regulatory information is for models with wireless LAN and/or Bluetooth® only.

General

This product complies with the radio frequency and safety standards of any country or region in which it has been approved for wireless use. Depending on configurations, this product may or may not contain wireless radio devices (such as wireless LAN and/or Bluetooth® modules). Below information is for products with such devices.

European Union (EU)

This device complies with the essential requirements of the European Council Directives listed below:

73/23/EEC Low Voltage Directive

- EN 60950

89/336/EEC Electromagnetic Compatibility (EMC) Directive

- EN 55022
- EN 55024
- EN 61000-3-2/-3

99/5/EC Radio & Telecommunications Terminal Equipment (R&TTE) Directive

- Art.3.1a) EN 60950
- Art.3.1b) EN 301 489 -1/-17
- Art.3.2) EN 300 328-2

List of applicable countries

EU member states as of May 2004 are: Belgium, Denmark, Germany, Greece, Spain, France, Ireland, Italy, Luxembourg, the Netherlands, Austria, Portugal, Finland, Sweden, United Kingdom Estonia, Latvia, Lithuania, Poland, Hungary, Czech Republic, Slovak Republic, Slovenia, Cyprus and Malta. Usage allowed in the countries of European Union, as well as Norway, Switzerland, Iceland and Liechtenstein. This device must be used in strict accordance with the regulations and constraints in the country of use. For further information, please contact local office in the country of use.

Canada — Low-power license-exempt radio communication devices (RSS-210)

- a** Common information
Operation is subject to the following two conditions:
 1. This device may not cause interference, and
 2. This device must accept any interference, including interference that may cause undesired operation of the device.
- b** Operation in 2.4 GHz band
To prevent radio interference to the licensed service, this device is intended to be operated indoors and installed outdoors is subject to licensing.

Exposure of humans to RF fields (RSS-102)

The Acer PDA employs low gain integral antennas that do not emit RF field in excess of Health Canada limits for the general population; consult Safety Code 6, obtainable from Health Canada's website at www.hc-sc.gc.ca/rpb.

Appendix A: Regulation & safety notices
Exposure of humans to RF fields (RSS-102)

Index

A

ActiveSync® 31

B

backlight 4, 8

Backup

opening 19

Restore function 20

C

command interface 14

device buttons 14

pop-up menus 16

Today screen 14, 15

connectivity features 25

connect to Internet 26

connect to network 28

help 28, 29

infrared 25

send 25

wireless communication 26

copyright ii

E

expansion features 23

Acer versatile connector 23

attaching expansion sleeve

inserting CompactFlash card 23

removing CompactFlash card 24

H

handheld

guides v

maintenance vi

package contents vi

resetting vii

handheld features 1

audio 2

battery pack 2

install 8

connectivity 2

display 1

ergonomics 2

expansion 2

performance 1

handheld setup

connecting cradle 8

installing battery 9, 11

installing Microsoft ActiveSync software 8

initial synchronisation 12

I

infrared 25

Internet 26

S

system tour 3

bottom view 6, 7

front view 3

left view 4

top view 5

T

third-party applications

IA Album LE 22
