

Pocket PC Phone User Guide

SAR Information

Read this manual carefully before using.

Warning: Reduced electromagnetic waves. Please use properly.

| For CE/ NCC | | | |
|-------------|-----------|-----------|-----------|
| Head | 900 | 1800 | 2100 |
| Max SAR | W/kg @10g | W/kg @10g | W/kg @10g |

Safety Instructions

- ⊗ Please read before proceeding.
- ⊗ Avoid applying excessive pressure to the touch screen, especially when using the stylus or your fingers.
- ⊗ In case the Pocket PC is damaged, send it back to the dealer for repair. Do not attempt to disassemble the Pocket PC on your own; otherwise the warranty will be void.

User Guide

| | |
|--|------------|
| Safety Instructions | 2 |
| 1 Getting Started // | 1-1 |
| Package Contents | 1-1 |
| External Views | 1-2 |
| <i>QWERTY Keyboard</i> | 1-4 |
| <i>Hardware Hotkey Functions</i> | 1-5 |
| Using the Pocket PC for the First Time..... | 1-6 |
| Installing and Removing the SIM Card..... | 1-6 |
| <i>Charging Power and Power Supply</i> | 1-9 |
| <i>Re-installing or Replacing the Battery</i> | 1-11 |
| Fingerprint Reader | 1-12 |
| Power On and Off | 1-13 |
| <i>Power Off Mode</i> | 1-13 |
| <i>Sleep Mode</i> | 1-14 |
| <i>Turn on the Screen</i> | 1-15 |
| <i>Restarting the Pocket PC</i> | 1-16 |
| Reset..... | 1-17 |
| Default Settings..... | 1-18 |
| Cold Boot..... | 1-19 |
| Clean Boot | 1-20 |
| 2 Voice Command Satellite Navigation // | 2-1 |
| Navigation Device Installation..... | 2-1 |
| GPS Navigation Software Installation | 2-2 |
| Conditions for Using GPS Car Navigation | 2-2 |
| Satellite Data Update (Not supported in USA) | 2-4 |

| | |
|---|------------|
| Location SMS | 2-7 |
| GPS Viewer..... | 2-9 |
| 3 Using the Phone // | 3-1 |
| Using the Headset | 3-2 |
| Using the Phone for the First Time | 3-3 |
| Adjusting the Phone Volume..... | 3-4 |
| Toolbar | 3-6 |
| SMS Sender | 3-8 |
| 4 Connections // | 4-1 |
| Using Bluetooth | 4-1 |
| <i>Setup the Bluetooth Connection</i> | 4-2 |
| 5 Using Wireless LAN // | 5-1 |
| Connecting to Wireless LAN | 5-2 |
| Configure Your Wireless Network..... | 5-3 |
| <i>WLAN Setup Scenarios</i> | 5-3 |
| <i>Configure Your Wireless Network (Reference for a normal</i> <i>network setup)</i> | 5-4 |
| <i>Configure Your Wireless Network (Reference for Proxy setup)</i> | 5-7 |
| 6 Specifications // | 6-1 |
| 7 Appendix // | 7-1 |
| Disposal and recycling information | 7-1 |
| <i>Mercury advisory</i> | 7-1 |
| Safety regulations..... | 7-2 |
| <i>Declaration of Conformity for EU countries</i> | 7-2 |
| <i>LCD pixel statement</i> | 7-2 |
| <i>Radio device regulatory notice</i> | 7-2 |
| <i>General</i> | 7-3 |
| <i>Certificate Information (SAR)</i> | 7-3 |
| <i>federal Communications Commission Interference Statement</i> | 7-4 |

1 Getting Started

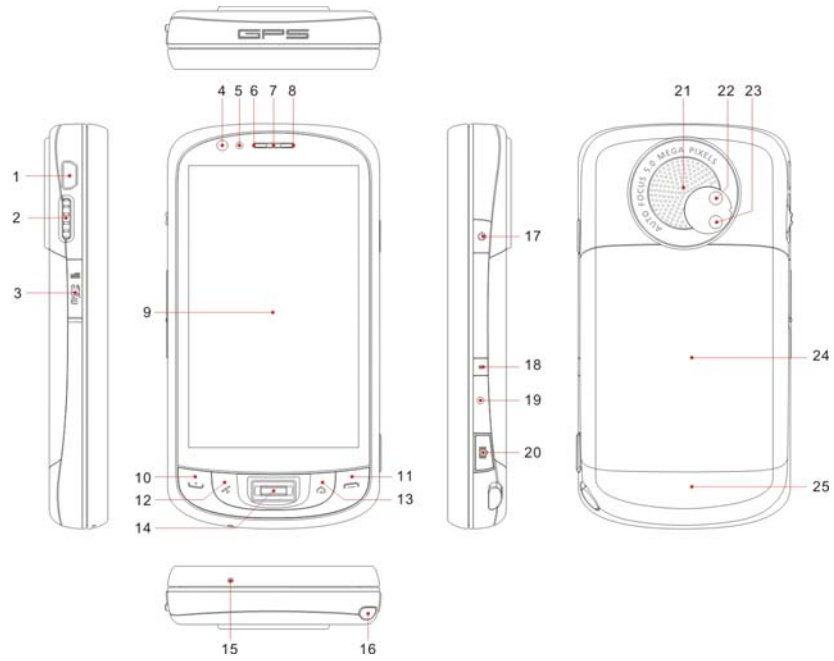
Package Contents

- Pocket PC
- Getting Started CD
- AC adapter
- Stylus
- User Guide
- USB cable
- Battery
- Headset



- ❶ Pocket PC
- ❷ Stylus
- ❸ Battery
- ❹ Getting Started CD
- ❺ User Guide
- ❻ USB cable
- ❼ AC adapter

External Views

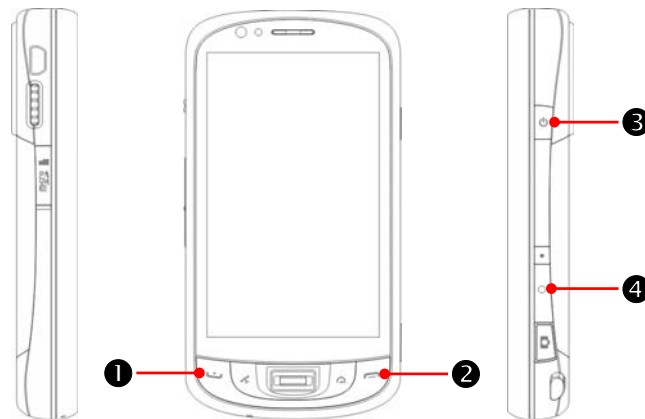


- | | |
|---|--|
| 1. Mini USB connector/headset connector | 2. Jog dial |
| 3. MicroSD slot | 4. Video conference camera |
| 5. Light sensor | 6. BT/WLAN/GPS LED indicator |
| 7. Phone receiver | 8. Power/phone LED indicator |
| 9. Display, touch screen | 10. Send/Talk key |
| 11. End key | 12. Hot key reserved for GPS AP |
| 13. Home hot key | 14. Fingerprint reader |
| 15. Microphone | 16. Stylus |
| 17. Power key | 18. Record key/ Voice Commander hot key |
| 19. Reset key | 20. Camera hot key |
| 21. Speaker | 22. Camera lens |
| 23. Flashlight LED | 24. Battery cover |
| 25. Back cover | |

QWERTY Keyboard



Hardware Hotkey Functions



| Hardware button | Press | Press and hold |
|-----------------|---|--|
| ① | Launch Phone /dial/redial/answer | Put current call on hold |
| ② | <ul style="list-style-type: none"> ■ End a call ■ Disconnect GPRS ■ Return to the Today screen while in other programs | <ul style="list-style-type: none"> ■ Turn off phone if it is on ■ Turn on phone if it is off |
| ③ | Power key = Turn the screen on/off | Turn the Pocket PC on/off |
| ④ | Reset key | -- |
| ③+④ | Power key + Reset key = Cold boot | -- |

Using the Pocket PC for the First Time

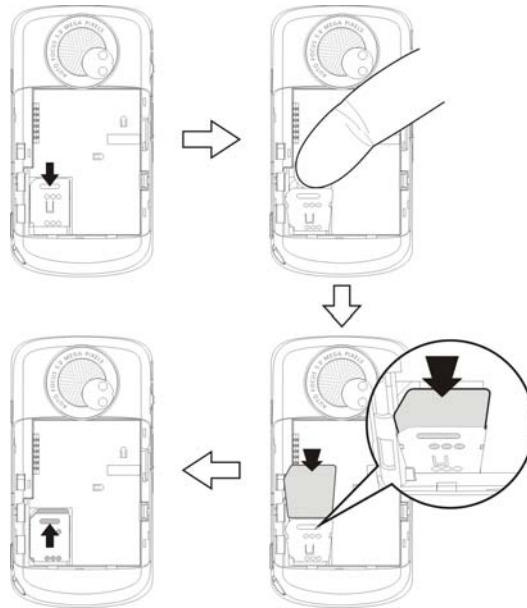
If you are opening this product for the first time, the main battery and the Pocket PC are packed separately inside the product packaging.

Installing and Removing the SIM Card

1. Before installing the SIM card, launch **Communication Manager**, and then tap the OFF button in Flight Mode. This indicates that the wireless connection of the Pocket PC is disabled.
2. Press the Pocket PC Power key to turn off the screen.
3. Disconnect the USB cable or AC adapter if either of them is connected to your Pocket PC. The removal of SIM card or battery while the Pocket PC is connected with a USB cable or AC adapter may damage your device.

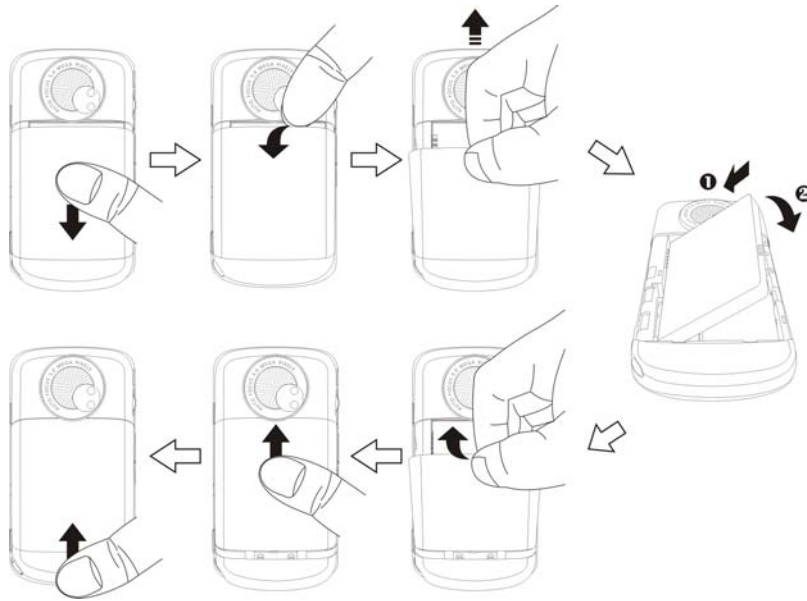
4. To Install the SIM card

Turn over your Pocket PC and remove the battery cover. Please pay attention to the direction of the missing corner of the SIM card, and then insert the SIM card into the slot.



5. To Install the battery

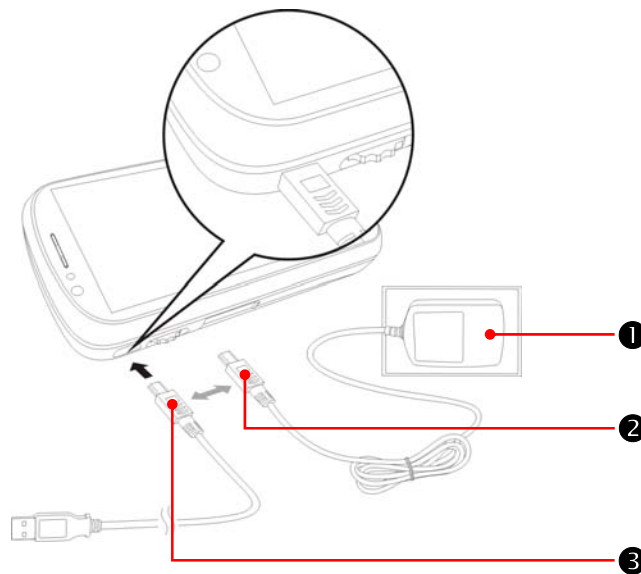
Place the battery in the back of Pocket PC. Make sure that the golden contacts are aligned to the battery box; gently insert the battery until it clicks. Then replace the battery cover.

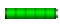


Charging Power and Power Supply

- ➊ Connect the AC adapter plug to any household power outlet.
- ➋ Connect the other plug from the AC adapter to the USB port. The Pocket PC will start charging automatically.
- ➌ If you need to connect your Pocket PC to a computer, connect the USB cable to the USB port. Then connect the other end of the USB cable to the USB port on the computer. Your Pocket PC will also be charged while connected.

But don't remove the battery while charging. Once you remove the battery, Pocket PC will not work.



1. It will take about eight hours to fully charge the battery the first time.
Subsequent charging will only take about three hours. After charging, you can disconnect the AC adapter to take your Pocket PC with you. To ensure smooth operation, charge the battery regularly.
2. The battery icon  in the upper right corner of the screen indicates remaining battery charge.
3. The LED indicator on the right of the Pocket PC indicates the charging and function status.

| | |
|-------|--|
| Red | Red: Device is charging. |
| | Flashing red every four seconds: Battery level low; missed calls or unread messages. |
| | Repeatedly flashing red twice: Battery level critical. |
| Green | Green: Battery fully charged. |
| | Flashing green every four seconds: GSM is connected and on line. |

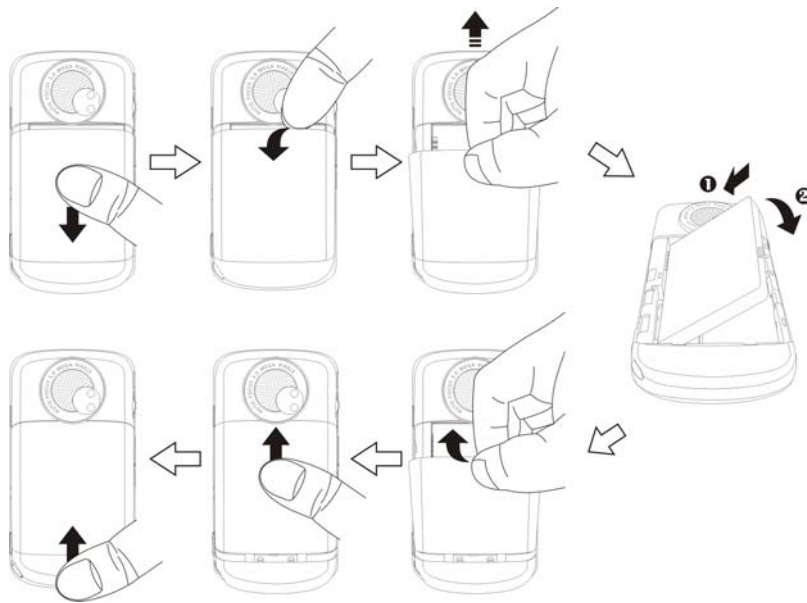
4. The LED indicator on the left of the Pocket PC

| | |
|-------|---|
| Blue | Flashing blue every four seconds: Bluetooth enabled |
| Amber | Flashing amber every four seconds: WLAN enabled |
| White | Flashing white every four seconds: GPS enabled |

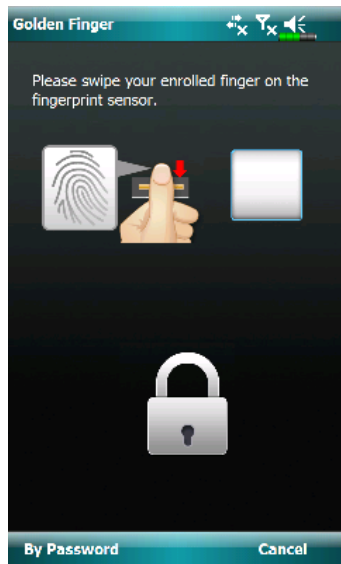
Re-installing or Replacing the Battery

If the phone, GPRS or wireless LAN connection are already activated, deactivate them first and then replace the battery.


Turn over your Pocket PC and remove the battery cover. Place the battery in the back of Pocket PC. Make sure that the golden contacts are aligned to the battery box; gently insert the battery until it clicks. Then replace the battery cover.



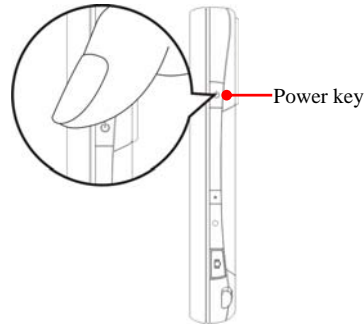
Fingerprint Reader



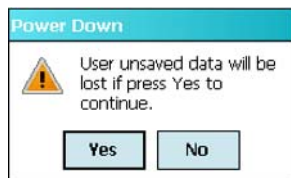
Swipe your enrolled finger on the fingerprint sensor.

Tap , **Settings**, the **Personal** tab and then **mEgis (Fingerprint)** to set the details.

Power On and Off



Power Off Mode



1. Press and hold the Power key on the Pocket PC and then tap **Yes** to turn off the Pocket PC. All functions will be disabled; this is not the same as Sleep mode.
2. To turn on, simply press the Power key.


Using the Stylus to Touch the Screen

- Your Pocket PC is designed for graphics-based operation. Generally speaking, we usually “use the stylus to perform basic actions such as tap, drag, and tap and hold” on the touch screen. Other actions such as reset and cold boot will require the use of the stylus tip.
- Pull the stylus to full-length to make it easier to tap the screen during operation. When kept completely in the stylus holder, the stylus length shortens.
- Avoid heavily pressing on the touch screen with the stylus or your fingers.

Sleep Mode

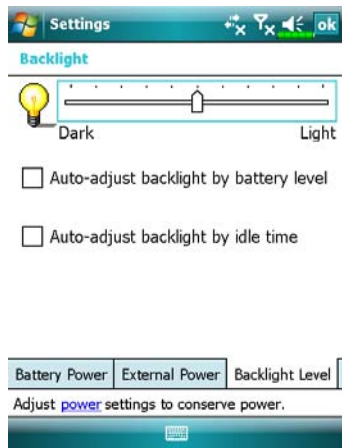
1. Press the Power key of the Pocket PC to enter the Sleep mode. At this time, the screen is turned off and all peripheral devices enter the power-saving mode. But if the phone is turned on, it is still in the call waiting mode.
2. To turn on the screen later, just press the Power key.




3. Tap , **Settings**, the **System** tab, **Power** and then the **Advanced** tab to set the device to turn off automatically after waiting for a certain time period.

Turn on the Screen

This product is designed with a power-saving feature. If the screen is turned off, press the Power key of the Pocket PC to turn it on.



If the screen is too dark and you cannot see clearly, set the proper brightness level for the backlight.

Tap , **Settings**, the **System** tab, **Backlight** and then the **Backlight Level** tab.

Restarting the Pocket PC

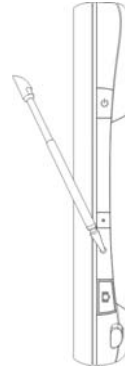
You should restart your Pocket PC if it is unable to maintain normal operation, does not response or if the screen is frozen.

You have four choices:

| | |
|--------------------------------|---|
| 1. Reset | Resets the Pocket PC and retains all your data and custom settings. |
| 2. Default Settings procedures | Use this when the touch screen is functional. It will restore Windows Mobile and factory-installed programs. You will lose all your data and custom settings. |
| 3. Cold Boot | Cold boots the Pocket PC and retains all your data and custom settings. |
| 4. Clean Boot | Force a hardware cold boot: You have the option of a simple reset or restoring the default settings. |

Reset

- To reset your Pocket PC: Press the Reset key using the stylus tip.




- Appropriate situation: You should restart your Pocket PC if it is unable to maintain normal operation, does not response or if the screen is frozen.
- Result: The Pocket PC will boot to the Today screen. This will retain Microsoft Windows Mobile, factory-installed applications, your data, other installed programs and custom settings.

Default Settings

To restore the default settings:

Tap , **Programs, Utilities**, and then **Default Settings**.

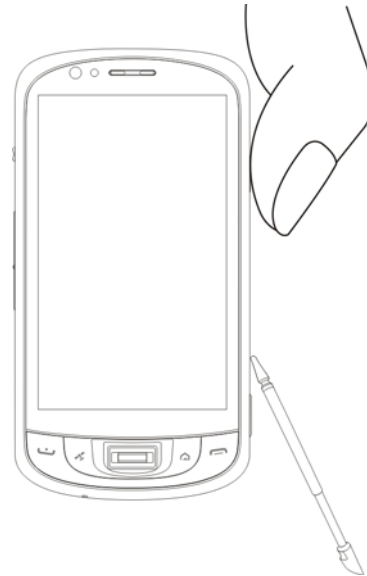


1. If this application is inadvertently accessed, please select the  to exit, the system will not be affected.
2. If you are certain that you wish to perform this action, please select the text box on the right, and enter the authorization code in the block on the left. Then tap **OK**.

- ⚙️ Appropriate situation: If the Pocket PC is unable to maintain normal operation, but the touch screen is functional. Please refer to the instructions in this section to troubleshoot.
- ⚙️ Result: This will reinstall Microsoft Windows Mobile and factory-installed applications. Other settings such as your own data, installed programs and other custom settings will be erased.

Cold Boot

- ❁ To cold boot your Pocket PC: Hold the Power key with one hand while using stylus tip to push in the Reset key with the other. Simultaneously release both the Power key and Reset key.



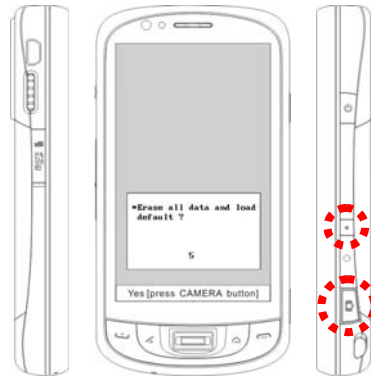
- ❁ Appropriate situation: Only do this if you have already tried to reset using another method, and your Pocket PC is still not operating normally, is not responding or the screen is frozen.

Clean Boot

- ⚙️ Appropriate situation: If you have tried the previous methods, and they have not solved the problem, then you may clean boot your Pocket PC.
- ⚙️ Result: This will reinstall Microsoft Windows Mobile and factory-installed applications. Other settings such as your own data, installed programs and other custom settings will be erased.

1. Press and hold both Power key and Reset key for a while, then release them simultaneously.
2. Wait for a few seconds until the screen wakes up displaying the model name, firmware version and firmware build date of your device, instantly press and hold Record key.
3. Continue pressing Record key and release it when you see this message shown on the screen.

- ➡️ Erase all data and load default?
Yes [press CAMERA button]

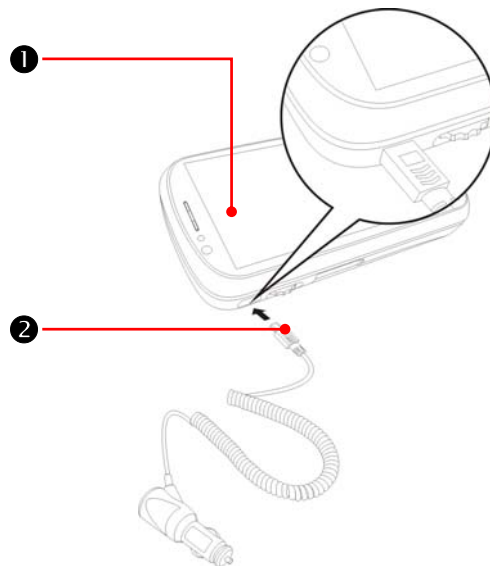


The operation “Erase all data and load default?” will delete all the data you stored on your device and restore it back to factory default settings.

- If you press **Camera** hot key upon seeing the line “Yes [press CAMERA button]” at the bottom of screen, all the data you stored, programs you installed and customized settings you made on your Pocket PC will be cleared. Follow the onscreen instructions to complete the resetting after the Pocket PC reboots.
- Without your confirmation of this operation as pressing **Camera** hot key, the Pocket PC will cancel this procedure after a few seconds idle.

2 Voice Command Satellite Navigation /

Navigation Device Installation



- ❶ Pocket PC
- ❷ Car Charger (* optional): when Pocket PC is low on power, recharge by connecting one end to the car cigarette lighter/12 volt power outlet and the other end to the socket on Pocket PC.

Attention: The GPS signal receiver is built into the Pocket PC. If car windscreen has heat reflective metallic film, or Pocket PC is obstructed by objects, then the receptivity of the GPS will be adversely affected.

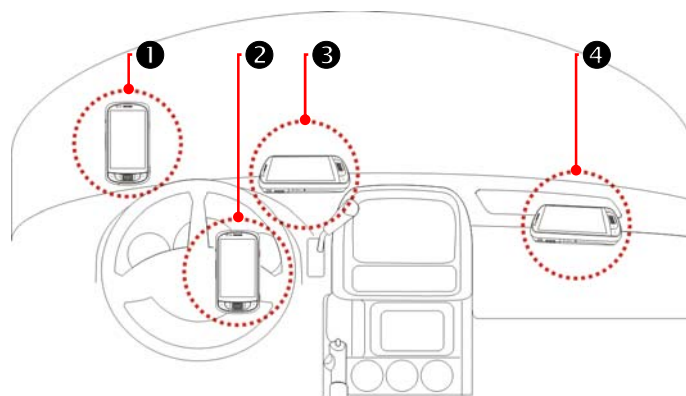
GPS Navigation Software Installation

Please follow your car navigation system operating manual's instructions on software installation in order to use the navigation function.

Conditions for Using GPS Car Navigation

By using this system you are agreeing to the following conditions:


1. When using this device, please use with matching car mount. Affix device securely to the car mount. Please be aware that installation in the areas depicted below is forbidden and is strictly prohibited.



- ❶ Do not place where it will obstruct driver vision
- ❷ Do not place over air bag
- ❸ Do not place where it can not be securely attached
- ❹ Do not place in path of activated air bag

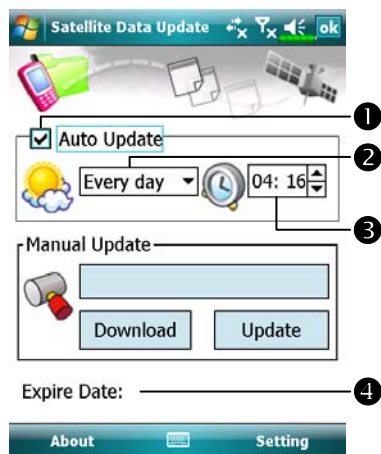
2. Please set navigation destination before driving. Do not operate this system while driving.
3. Please use this system with care. If any harm results from careless use of this system, the responsibility for safe driving resides with the driver.
4. GPS positioning is limited by weather and usage location (tall buildings, tunnels, underpasses, trees, bridges). Most GPS do not work indoors, nor can GPS signals penetrate buildings, car sun shades and heat reflective film with metallic content. Please install GPS outdoors with clear line of sight. Beneath the windshield at the front of the car is a common choice, and the windshield should be free of heat reflective film.
5. The GPS system is built and operated by the U.S. Department of Defense which is also responsible for its maintenance and calibration. Any changes made by them may affect the operation and accuracy of the GPS system.
6. Wireless devices (mobile phones, speed radar detectors) will all interfere with the satellite signal and cause unreliable signal reception.
7. The GPS position fix is provided only for the driver's reference and should not affect actual driver behavior.
8. The electronic map data provided in the navigation system is for normal reference only and not intended for high precision applications. The user should determine their exact location based on actual road conditions.
9. The route provided by the navigation system, the audio cues and intersection data are derived from recommended optimal route calculated using the electronic map data. This is provided for the driver's reference only, the driver should decide their chosen route according to actual road conditions.
10. When not in use, please do not leave the device inside the car. If exposed directly to sunlight, the battery may overheat and cause damage to this device. This may endanger the vehicle as well.

Satellite Data Update (Not supported in USA)

Tap  **Programs, GPS, and then Satellite Data Update.**

Login to the provider's server to download instant satellite data and enable the GPS function. Note: either of the following connections allows your Pocket PC to download the latest GPS data. If there is more than one connection available, the system will automatically select the best connection, in the following order:

1. Synchronization connection: Connect your Pocket PC to a PC (Desktop or Notebook). Please note that your PC must be online.
2. Wireless LAN connection.
3. GPRS connection: Roaming mode cannot update GPS data automatically.
If necessary, change to manual mode.



- ☛ The system will update GPS data automatically based on a schedule. Follow these steps:
 - 1 Check the automatic update checkbox.
 - 2 Set the date.
 - 3 Set the time.
 - 4 The text shows the expiration date of the GPS data. On the due date, the system will pop up a warning message. Refer to the following instruction about the **Today** screen.



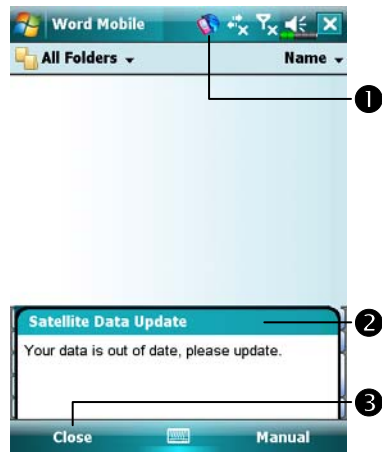
Tap the **Download** Button to update the GPS data manually. The figure on the left shows how to download using the synchronization connection.

Tap the **Setting** Button in the **Satellite Data Update** main screen to open the dialog in the left figure.

- 1 Check the expiration checkbox to activate the reminder function on the due date.
- 2 The default value is checked. The system will automatically update the data when online. Costs will be incurred when connecting over the GPRS, so consider carefully before activating this function.

After setting your Pocket PC to the following connection mode and activating the automatic update and Internet connection functions, the system will automatically download the latest GPS information periodically.

1. Synchronization connection. Make sure that your Pocket PC is connected to the PC, and that the PC is online.
2. Wireless LAN connection.
3. GPRS connection.

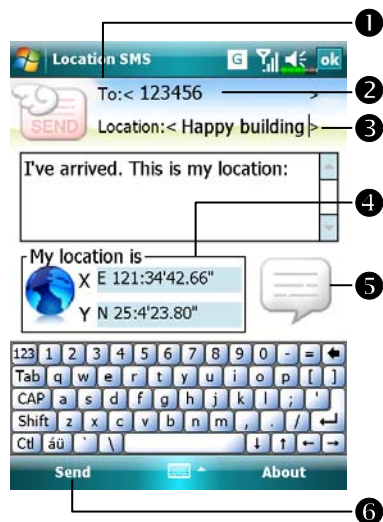


- 1 When the GPS data has expired, the relevant message displays on the top of the screen.
- 2 The icon reminds you that your GPS data has expired.
- 3 Tap the **Notification** Button to open the message window.
- 4 Tap to close the message window.

Location SMS

Tap  **Programs, GPS, and then Location SMS.**

You can utilize the GPS function offered by your Pocket PC, to send the matching location automatically found by this program and the necessary message to your contacts. This could be helpful in preventing kidnapping, reporting disastrous situations, calling for help in emergencies or locating an individual. In addition, we have formulated many SMS templates based on different situations for your convenience.



1. It is better to execute this program at a location with clear signal.

1 Tap to open the **Contacts** screen, if set up in advance, you can choose contacts directly.

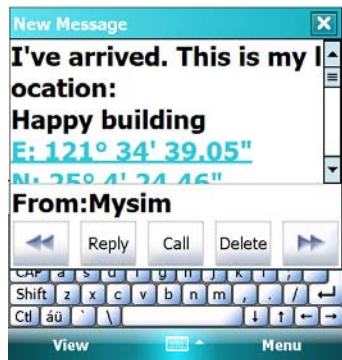
2 You can directly enter mobile phone number in the **To** area. If there is more than one recipient, please use “;” to separate recipients.


3 You can directly enter your message in this area, such as landmarks, features or street names.

4 Automatically searches for GPS information.

5 Tap to allow you to select, add, edit, or delete your most used messages.

6 Tap to allow you to send SMS messages and report your location.



2. Select  in the main screen, once in the screen shown on the left, tap on any message and tap **OK** to select.

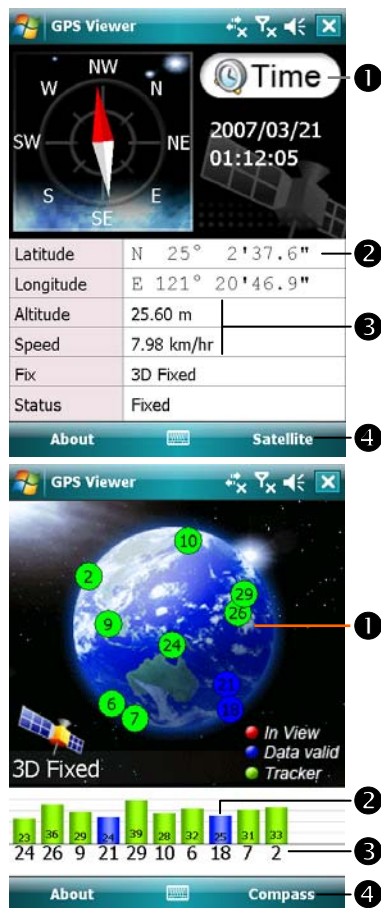
Further, by pressing and holding anywhere on the screen, together with the pop-up menu, you can add, edit or delete your most used messages.

3. The content of the message that your recipient views looks similar to what is shown on the left. Actual messages differ depending on the recipient's device.

GPS Viewer

Tap  **Programs**, **GPS**, and then **GPS Viewer**.

You may use this Pocket PC to automatically search the GPS coordinates of your location and check if the GPS functions work properly.





- Run this program in a location with good signal reception.
 - Greenwich Mean Time (GMT): After connecting to a satellite and obtaining the GMT, it will be displayed on the screen. Tap to set the satellite time as the system time.
 - Report GPS tracking information.
 - Tap to change the unit.
 - Switch to Satellite mode.
- Tap **Satellite** to switch to Satellite mode.
 - Red: Satellite detected (In View). Blue: Satellite data detected (Data Valid). Green: Tracking completed (Tracker).
 - Signal strength: The larger the figures, the stronger the signal.
 - Satellite ID: The IDs expressed in numbers in this field correspond to the IDs on the earth image above.
 - Switch to Compass mode.

3 Using the Phone

The Phone feature on the Pocket PC allows you to perform the following tasks:

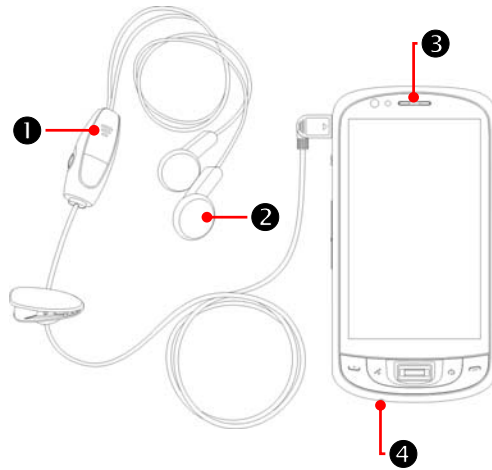
- ✿ Make and receive calls.
- ✿ Quickly make calls or listen to voice mail without entering phone numbers using **Contacts**, **Speed Dial**, or your **Call Log**.
- ✿ Check the **Call Log** to see who has called, whom you have called, add a new number to **Contacts**, and access notes taken while you were on a call.
- ✿ Receive calls and easily take notes during the call.
- ✿ Send SMS messages.
- ✿ Customize how your phone rings.

To switch to the Phone function, press  on the lower part of the Pocket PC or tap  and then **Phone**.



Caution!

- To avoid distraction and affecting driving safety, never use your Pocket PC while driving an automobile or any other moving vehicle.
- Make sure that the SIM card is properly installed in your Pocket PC and the Phone is already turned on before you use the functions described in this section.
- When aboard an aircraft, at a medical facility, or at the gas pump where wireless communication devices are prohibited, please launch the **Communication Manager** and then tap the OFF button in Flight Mode.
- The Phone function relies on the Pocket PC main battery for power. Maintain the main battery power level to assure call quality and the normal operation.

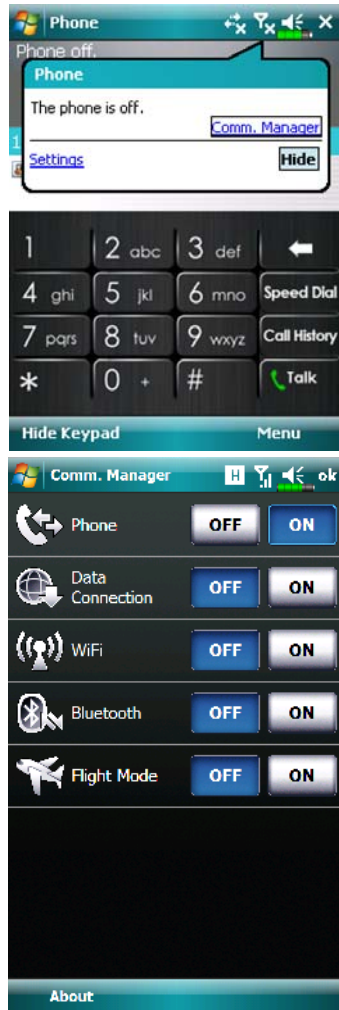
Using the Headset




- 1** Microphone **2** Earphone
3 Phone receiver **4** Microphone (Bottom of Pocket PC)


| Combination Method | Operation | Answer or End a Call | Adjust Earphone Volume |
|---------------------------------------|---|--|---|
| Hold the Pocket PC manually for calls | Hold the Pocket PC and position the receiver close to your ear and the microphone close to your lips. | Press  or  on the lower part of the Pocket PC. | While answering a call, push the volume control key on the side of the Pocket PC to test the earphone volume. |
| Install the external headset | Place the earphone in your ear and position the microphone to your lips. | Use the line control function. Press the button on the headset to answer or end the call. Except the Bluetooth headset, when the phone is ringing, hold down the button to reject the incoming call. | Use the knob on the headset to adjust the volume of the earphone during a call. |

Using the Phone for the First Time



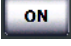



1. Turn on the phone


❶ On the Today screen, tap  to launch **Communication Manager**.


❷ Or tap the  icon. When the message window appears, tap “Comm. Manager.”


❸ Tap  to enable Phone.

❹ Input the PIN and wait for the phone to turn on.


❺  changes to . And the  icon changes to .

2. Dial: Press  to enter the Phone screen. Use the stylus to tap the telephone number and then tap the **Talk** Button.

3. Answer a call: Press .

4. End a call: Press .




5. Turn off the phone









❶ On the Today screen, tap  to launch **Communication Manager**.

❷ Tap  to disable Phone.

Adjusting the Phone Volume



Tap  on the top and adjust all programs' sound functions under . Adjust the phone sound volume under .

1. When there is no call, you can push the volume control key on the side of the Pocket PC or use the stylus to tap the speaker icon
Tap  and then  to adjust the ring volume of the incoming call.
2. Push the volume control key on the side of the Pocket PC or tap  and then  to adjust the phone volume. You can only do this during a call.
3. Vibration mode: The speaker icon  on the top changes to .
4. Mute mode: The speaker icon  on the top changes to .

Here is how to adjust the proper volume:

1. If earphones are used with the Pocket PC to make calls, set the volume according to actual personal needs.
2. If earphones are not used with the Pocket PC and not held close to the ear for calls but similar to hands-free operation, it is recommended to set the sound volume for the top two levels.
3. For holding the Pocket PC close to the ear directly for calls, it is recommended that you set the volume to the lower four levels. It is recommended not to use the top two levels because the volume is high and may affect your hearing.

Turn on or turn off the speakerphone:

1. Enable the speakerphone: While answering a call, tap **Speaker on** to turn on.
2. Disable the speakerphone: Tap **Speaker off** to turn off.

Toolbar



- 1 **Smart Dialing:** Enter the portion you remember and the system will use the fuzzy comparison method to list the matching contacts at area 2 on the figure.

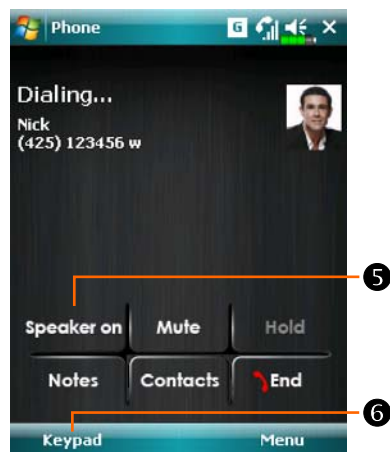
Please refer to the keyboard shown on the screen to enter information including the phone number and letters.

- 2 Tap a contact to view contents.
- 3 Provides the relevant menu. For example, select **Options** to change the phone setup such as ring tone, vibration mode, PIN code, etc. Or select **Send Text Message** to send SMS message.





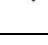

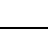



- 4 **Hide Keyboard Button:** Tap to expand the contacts display area, and then tap **Keyboard** Button to restore the keyboard.

- 5 **Speaker on Button:** While answering a call, tap to enable the speakerphone.



- 6 **Keypad Button:** Tap to return to the keypad.



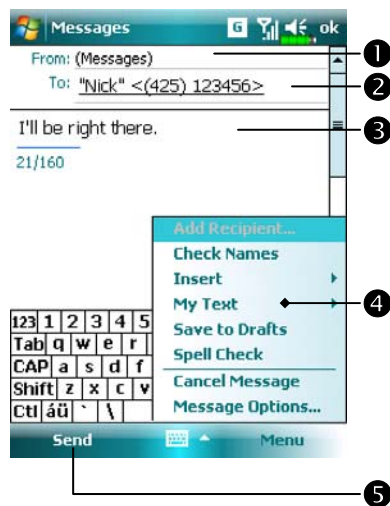
The following table shows the icons that you may see on the Navigation Bar on the top of the screen.

| Signal Indicator | Description |
|---|---|
|  | SIM card unavailable. |
|  | The phone is turned off. To turn it on, tap this icon. |
|  | Network is searching or unavailable. |
|  | Phone connection unavailable or network error. To turn it off, tap this icon. |
|  | The phone is turned on and signal reception is normal. To turn it off, tap this icon. |
|  | Active call. To switch back from other programs, tap this icon. |
|  | Call forwarding active |
|  | Calls are forwarded |
|  | Missed call |
|  | Roaming mode |

SMS Sender

- Tap  **Messaging, Messages, Menu, New, and then Text Message.**
- Press  to bring up the **Phone** screen. Tap **Menu** and then **Send Text Message.**

Enter the composing SMS screen in **Messaging.**

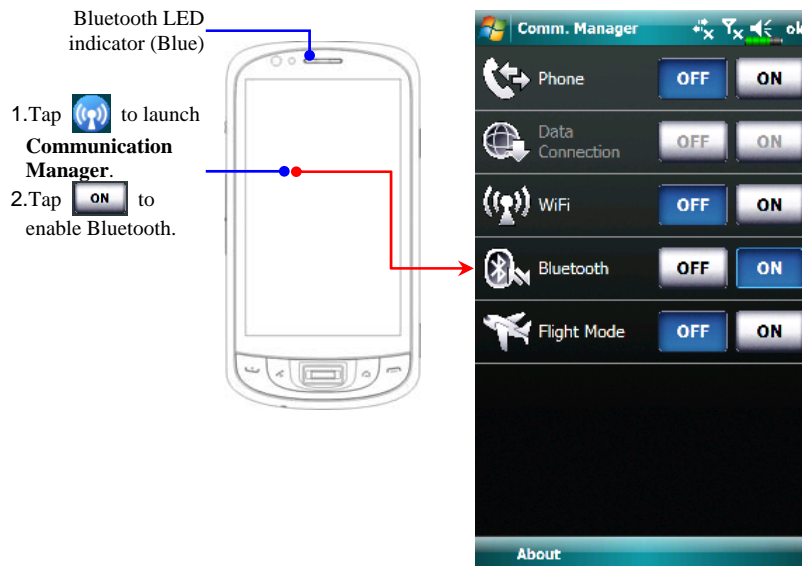


- ① “Text Messages” means you are editing SMS.
- ② Input the mobile phone number.
- ③ Input the messages you want to send.
- ④ Tap **Menu** and then **My Text** to select canned messages or to edit your Text Messages.
- ⑤ Tap to send SMS message.

4 Connections /


Using Bluetooth

Bluetooth is a short-distance wireless communication technology with an effective range under 10 meters (30 feet). When you enable Bluetooth function, the blue LED blinks once every 4 seconds.

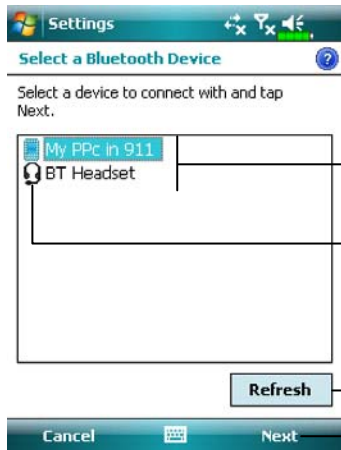


Bluetooth capable devices such as the PC, Pocket PC, Bluetooth headset etc. can be connected to this product for the convenience of data sharing.

Setup the Bluetooth Connection

On the **Communication Manager** screen, tap and hold the , then release to enter the **Bluetooth** manager.

Tap , **Settings**, the **Connections** tab, and then **Bluetooth**.



Tap **Bluetooth** and then **Devices** tab.

1. Select “Add new device” and the system will begin to search for nearby Bluetooth devices.

2. The search results will be similar to the screen to the left. Select the device to connect with the list.

1 All Bluetooth devices found nearby the system.

2 This icon indicates a Bluetooth headset.

3 **Refresh** Button: Search again to look for additional Bluetooth devices to connect with.

4 Select any device to connect with, and then tap **Next** to follow the onscreen instructions.

❑ **Pair for Bluetooth headset:** When the system asks for the password, please refer to the instructions provided with your purchased Bluetooth headset.

Pair for PC or Pocket PC: When the system asks for the password, please make sure that the identical password is entered to both devices.



3. Your Pocket PC connected with these devices will be able to transfer data, receive calls on a Bluetooth headset, and other applications.

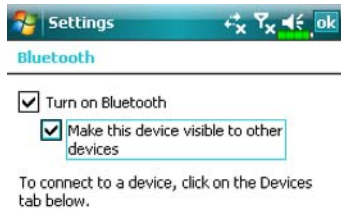
❶ Successfully connected devices will be shown as on the screen to the left.

❷ Tap and hold a device, for example the Bluetooth headset, then select **Set Hands-free** to be able to use the Bluetooth headset to receive calls.



4. The screen to the left is during a call.

❶ **Phone** screen during a call will show a headset icon in the upper right corner, the Bluetooth headset will be used to communicate with the callee.




- ❶ Checkmarking the “Make this device visible to other devices” option will enable all Bluetooth capable devices within the 10 m (30ft) effective range to detect your Pocket PC, and transmit data with the proper authentication.
- ❷ If the “Make this device visible to other devices” option is not selected, your Pocket PC can send data to other devices but other devices will not be able to detect your Pocket PC.



Tap **Bluetooth** and then **Mode** tab.

5. Configure the Bluetooth related options for your Pocket PC.

Tap , **Settings**, the **Personal** tab, and then **Owner Information**. Enter the name that you wish to show in the **Name** field. At the same time, other Bluetooth capable devices can recognize your Pocket PC by this name.

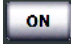

Tap **Bluetooth** and then **COM Ports** tab.

6. Follow the onscreen instructions to register the connected Bluetooth device as an effective COM port.


5 Using Wireless LAN


This section teaches you how to use the Pocket PC's built-in wireless LAN function to connect to the Internet. It is convenient for you to browse websites and send/receive E-mails through wireless networks at certain locations where wireless networking services are provided.

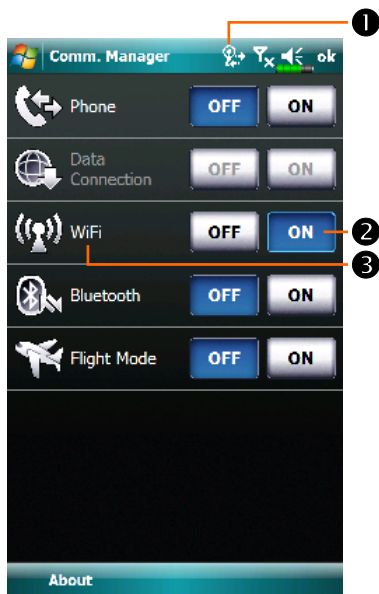
When you purchase credits for connecting to the Internet through a wireless LAN, you will be given the following information: an IP address, DNS name server address, Proxy server, port, and network key, etc. You need this information to setup and activate your connection. In some cases, you may need additional information to use a company's wireless connection, please confirm with the network administrator in your company.

If this is your first time using the wireless LAN function, firstly you should refer to the following "Configure Your Wireless Network" section for instructions for the necessary configuration settings. After you have completed the one-time configuration process, you only need to tap  after the  in the **Communication Manager** main menu for subsequent connections.


Connecting to Wireless LAN

On the Today screen, tap  to launch **Communication Manager**.

Tap  **Programs** and then **Communication Manager**.



1 This icon will show up on your screen whenever your Pocket PC has detected a usable wireless network and has connected to that network, indicating that your Pocket PC has successfully connected to the network hotspot (Access Point). The LED indicator on the Pocket PC will blink amber.

2 Tap to connect or disconnect to your wireless network,  means that this function has been disabled.



3 Tap and hold this button, then release to enter the configuration screen.

When the screen shown on the left appears, please choose a wireless network that you can use, and then tap **OK** Button. Then, select **Work**, and tap **Connect** Button. The first time you use the wireless LAN function, your system will ask you to set the above mentioned settings, after that, your system will continually use the settings from your most recent successful connection.



Configure Your Wireless Network

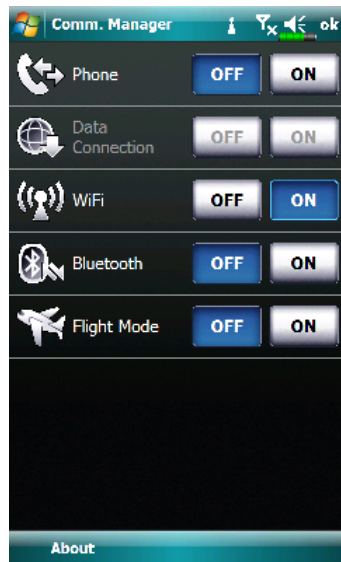
WLAN Setup Scenarios

| Location | Select Networks | Proxy Connection | Network key or Access Point |
|--------------------|---|---|--|
| Home |  Settings , the Connections tab, Connections , the Advanced tab, Select Networks Button, and then select My Work Network from “Programs that automatically connect to the Internet should connect using:” menu | <ol style="list-style-type: none"> 1. Close Proxy connection 2. Not required to set Proxy | <ol style="list-style-type: none"> 1. Authentication: Select Open 2. Data Encryption: Select WEP to enable the entry bar regarding Network key |
| Office | Refer to the above and set as My Work Network |  Settings , the Connections tab, Connections , the Tasks tab, select “Edit my proxy server,” and then check the Internet items to enable the entry bar about Proxy | Refer to the above and set the items for Network key |
| Café or restaurant | Refer to the above and set as My Work Network | <ol style="list-style-type: none"> 1. Close Proxy connection 2. Not required to set Proxy | WLAN select different Access Point |



Configure Your Wireless Network

(Reference for a normal network setup)


You will need a correct IP address, DNS name server address, Proxy server, and connection port number to setup your connection. If you have purchased a wireless Internet service account, then the service desk at the location where you will be connecting will provide you with this information, or, you should obtain this information from the network administrator of your company.

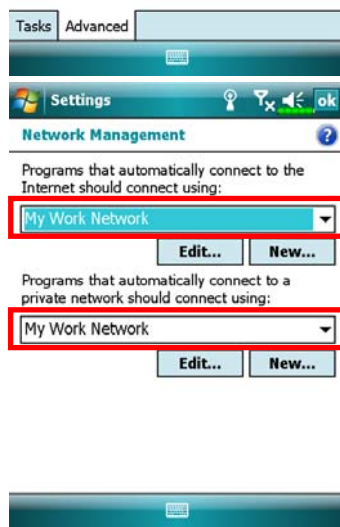



When your Pocket PC is unable to automatically detect or connect to a usable wireless network, please try to configure the network manually. Please refer to this section's settings instructions.

1. Tap **ON** after the  in the **Communication Manager** main menu, a  icon will display on the navigation bar.





2. Then tap , Settings, the Connections tab, Connections, and then the Advanced tab, the screen displays shown on the left.
3. Select the Select Networks Button.



4. As shown on the left, make sure that **My Work Network** is selected for both items, and finally tap  to save and exit.
- **My Work Network** is the WLAN connection method. As this option is from a choice of two, the next time you need to use the GPRS connection, you will have to refer to the above listed steps, select **My ISP** for the first item.




5. At the **Communication Manager** screen, tap and hold, and then release the  to enter the setup screen.
6. Select name of a currently available network to enter the WLAN authorization setup screen.
7. Set accordingly to the rules and information provided by the hotspot location.
 - ❶ **Authentication:** Select Open
 - ❷ **Data Encryption:** Select WEP to enable the entry bar about Network key
 - ❸ **Network key**
 - ❹ **Network index**
8. Tap and hold on the name of the network connection that you can currently use, and then select **Connect**. When the  icon appears on the top of the screen, your wireless network has been successfully connected.

Configure Your Wireless Network

(Reference for Proxy setup)

To successfully configure your network, you will need the following information: a correct IP address, DNS name server address, Proxy server, and connection port number, etc. Please obtain the above listed information from your company's network administrator. If your company's networking environment doesn't need Proxy server settings, please close the proxy connection.

Tap , **Settings**, the **Connections** tab, **Connections**, and then the **Tasks** tab.



When your Pocket PC fails to automatically detect or connect to a usable wireless network, please try using the manual method to configure your network settings. Please refer to the settings information in this section.



1. Select "Setup my proxy server" or "Edit my proxy server," as shown on the left.
2. In the **Proxy Settings** tab screen, make sure that the following items have been checked:
 - ① This network connects to the Internet
 - ② This network uses a proxy server to connect to the Internet

▣ The above is applicable to an office environment that requires a **Proxy setup.**

For others that close the proxy connection, please do not check the box named “This network connects to the Internet” and skip the following procedures.

3. Enter the name into the “Proxy server” field.

4. Select the **Advanced** button and enter the advanced settings screen.



5. You can modify the settings by tapping the HTTP type.



6. Enter the number into the “Port” field. Finally, tap **ok** to save and exit.

6 Specifications

| Item | Description |
|-------------------|--|
| Operating System | Windows Mobile™ 6.1 for Pocket PC Phone Edition |
| Processor | Samsung SC3 6410, 533 with one DRAM |
| Memory | 256 MB ROM, 128 MB RAM |
| Display | 3.8" WVGA, 65,536 colors TFT-LCD touch panel/touch window (Resolution: 800 x 480) |
| Dimensions | 119 (L) x 62 (W) x 17.1 (H) mm |
| Weight | 188g (including Battery & Stylus) |
| Communication | ■ HSDPA / UMTS (2100/1900/850 MHz) ■ Quad-Bands GSM: 850/900/1800/1900 MHz ■ EDGE class 10/GPRS class 10 |
| Wireless LAN | 802.11b/g |
| GPS | Embedded Chip, SiRF Star III |
| Bluetooth | Bluetooth® v2.0 class 2 + EDR |
| Camera | 5M pixels Auto-Focus with flashlight, up to 2560 x 1920 resolution |
| Light Sensor | Sensing the brightness of environment to adjust panel luminance |
| Expansibility | MicroSD slot |
| Interface (Audio) | Built-in microphone and speaker |
| Interface (Data) | Mini USB Sync |

| Item | Description |
|---------------------------|---|
| Power supply | Battery: 1530 mAh Li-Ion Polymer, rechargeable, replaceable AC Adapter: 100~240 VAC/50~60 Hz, 5V/1A DC |
| Environmental temperature | Daily operation: 0°C ~ 40°C; storage: -10°C ~ 50°C |

Disposal and recycling information

Do not throw this electronic device into the trash when discarding.

To minimize pollution and ensure utmost protection of the global environment, please recycle. For more information on the Waste from Electrical and Electronics Equipment (WEEE) regulations, visit <http://www.acer-group.com/public/Sustainability/sustainability01.htm>



Mercury advisory

For projectors or electronic products containing an LCD/CRT monitor or display:

Lamp(s) inside this product contain mercury and must be recycled or disposed of according to local, state or federal laws. For more information, contact the Electronic Industries Alliance at www.eiae.org. For lamp-specific disposal information, check www.lamprecycle.org.



Safety regulations

Declaration of Conformity for EU countries

Hereby, Acer, declares that this Smartphone series is in compliance with the essential requirements and other relevant provisions of Directive 1999/5/EC.

Compliant with Russian regulatory certification:



LCD pixel statement

The LCD unit is produced with high-precision manufacturing techniques. Nevertheless, some pixels may occasionally misfire or appear as black or red dots. This has no effect on the recorded image and does not constitute a malfunction.

Radio device regulatory notice

Note: Regulatory information below is for models with wireless LAN and/ or Bluetooth only.

General

This product complies with the radio frequency and safety standards of any country or region in which it has been approved for wireless use. Depending on configuration, this product may or may not contain wireless radio devices (such as wireless LAN and/or Bluetooth modules). Information below is for products with such devices.

Certificate Information (SAR)

This device meets the EU requirements (1999/519/EU) on the limitation of exposure of the general public to electromagnetic fields by way of health protection.

The limits are part of extensive recommendations for the protection of the general public. These recommendations have been developed and checked by independent scientific organizations through regular and thorough evaluations of scientific studies. To guarantee the safety of all persons, regardless of age and health, the limits include a significant safety buffer. Before radio devices can be put in circulation, their agreement with European laws or limits must be confirmed; only then may the CE symbol be applied.

The unit of measurement for the European Council's recommended limit for mobile telephones is the "Specific Absorption Rate" (SAR). This SAR limit is x W/kg, averaged over 10 g of body tissue. It meets the requirements of the International Commission on Non-Ionizing Radiation Protection (ICNIRP) and was included in the European Standard EN 50360 for mobile radio devices. The SAR regulation for mobile telephones is in line with European Standard EN 62209-1. The maximum SAR value is calculated at the highest output level in all frequency bands of the mobile telephone. During

use, the actual SAR level is usually much lower than the maximum value, because the mobile telephone works in different output levels. It only transmits with as much output as is required to reach the network. In general the following applies: The closer you are to a base station, the lower the transmission output of your mobile telephone. The highest SAR value for this device, measured in accordance with the standard, is x W/kg.

FEDERAL COMMUNICATIONS COMMISSION INTERFERENCE STATEMENT

This mobile device meets guidelines for exposure to radio waves. Your mobile device is a radio transmitter and receiver. It is designed not to exceed the limits for exposure to radio waves recommended by international guidelines.

This equipment has been tested and found to comply with the limits for a Class B digital device, pursuant to Part 15 of the FCC Rules. These limits are designed to provide reasonable protection against harmful interference in a residential installation. This equipment generates, uses and can radiate radio frequency energy and, if not installed and used in accordance with the instructions, may cause harmful interference to radio communications. However, there is no guarantee that interference will not occur in a particular installation. If this equipment does cause harmful interference to radio or television reception, which can be determined by turning the equipment off and on, the user is encouraged to try to correct the interference by one or more of the following measures:

- Reorient or relocate the receiving antenna.
- Increase the separation between the equipment and receiver.

- Connect the equipment into an outlet on a circuit different from that to which the receiver is connected.
- Consult the dealer or an experienced radio/TV technician for help.

RF exposure warning:

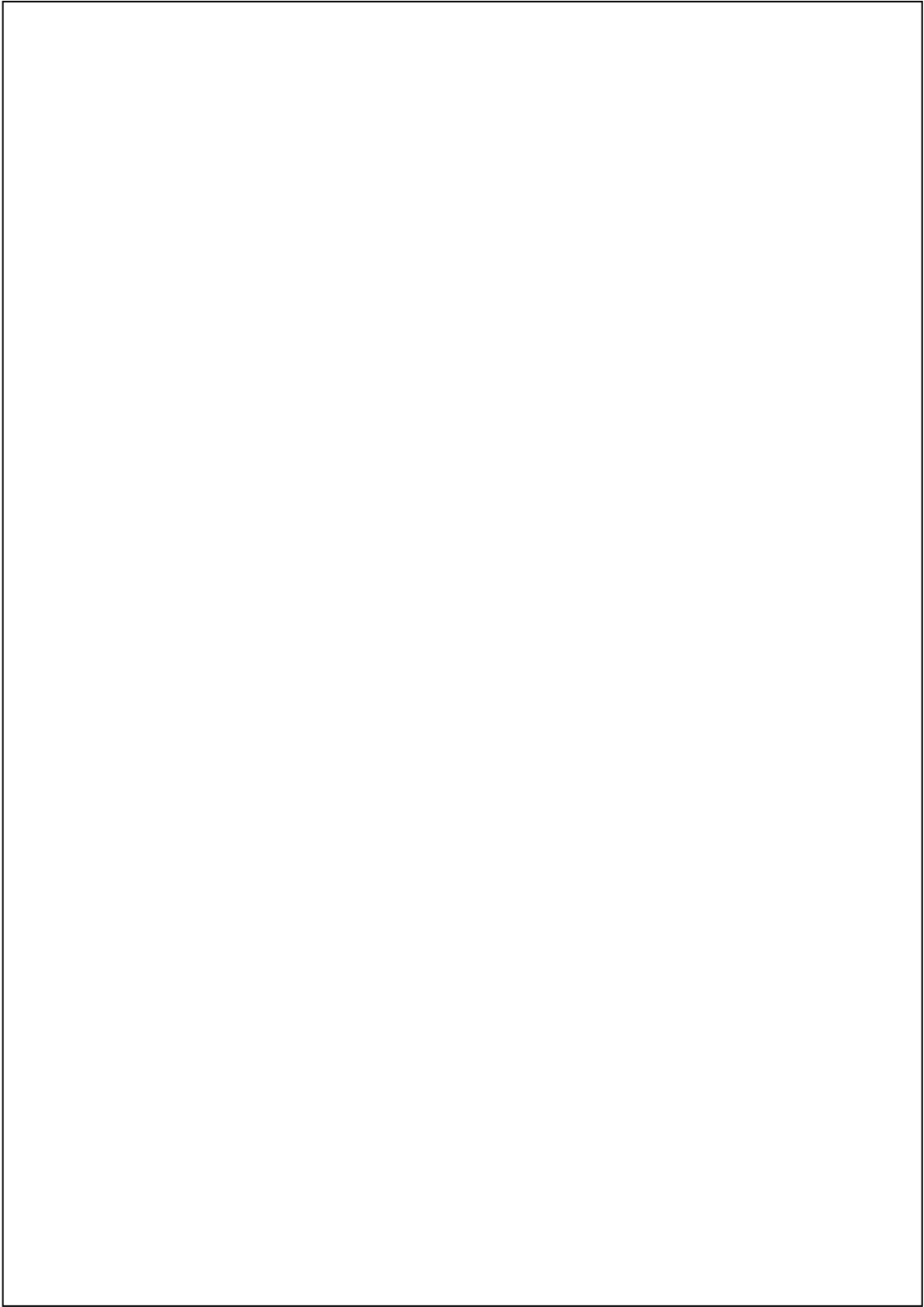
The equipment complies with FCC RF exposure limits set forth for an uncontrolled environment.

The equipment must not be co-located or operating in conjunction with any other antenna or transmitter.

This device complies with Part 15 of the FCC Rules. Operation is subject to the following two conditions: (1) this device may not cause harmful interference, and (2) this device must accept any interference received, including interference that may cause undesired operation.

CAUTION:

Any changes or modifications not expressly approved by the grantee of this device could void the user's authority to operate the equipment.



First Version: March 2009

Current Version: March 2009, Version 1

Number: 20090228