

Acer M900DF

User Guide

© 2010. All Rights Reserved

Acer M900DF Smartphone User Guide

First issue: 01/2010

Acer M900DF Smartphone

Model number: \_\_\_\_\_

Serial number: \_\_\_\_\_

Date of purchase: \_\_\_\_\_

Place of purchase: \_\_\_\_\_

# Table of Contents

---

## Get to know your Acer M900DF Smartphone

Features and functions .....	7
Other sources of help .....	8
Product registration .....	9

## Chapter 1: Set Up

Unpack your smartphone .....	11
Get to know your smartphone .....	12
Install the SIM card .....	15
Remove the SIM card and battery .....	16
Charge the battery .....	17
Turn on for the first time .....	18
The Home screen .....	20
Connect to your PC and synchronize data .....	23

## Chapter 2: Making Calls

Before making a call .....	25
The onscreen number pad .....	26
Make a voice/video call .....	26
The voice call screen .....	28
Onscreen call options .....	31

## Chapter 3: Input Devices

The stylus .....	35
The fingerprint reader .....	35
The application buttons .....	36
The onscreen keyboard .....	37
The QWERTY keyboard .....	38

## Chapter 4: Messaging

The messaging screen .....	43
Text (SMS) messages .....	44

MMS messages .....	45
Email .....	48
<b>Chapter 5: Home Screen Overview</b>	
The Home screen .....	49
Customize basic settings .....	52
<b>Chapter 6: Using the Camera</b>	
Camera icons and indicators .....	55
Take a photo .....	57
Shoot a video .....	57
Photo and video options .....	58
<b>Chapter 7: The Fingerprint Reader</b>	
Security settings .....	61
Navigate with the fingerprint reader .....	62
<b>Chapter 8: Advanced Operation</b>	
Put your Acer M900DF Smartphone in flight mode	65
Comm. Manager .....	66
Adjust connection settings .....	66
Phone settings .....	71
Manage contacts .....	73
Namecard Manager .....	76
SIM Manager .....	77
Connect to a PC and install software .....	79
Other functions .....	80
Multimedia playback .....	81
Satellite Data Update .....	84
Reset your Acer M900DF Smartphone .....	89
<b>Chapter 9: Accessories and Tips</b>	
Use the stereo headset .....	93
Use a Bluetooth headset .....	93
Use your Acer M900DF Smartphone as a modem ..	94
Insert a micro SD card .....	98
<b>Appendix</b>	

FAQ, troubleshooting and error messages . . . . .	99
Specifications . . . . .	102
Warnings and precautions . . . . .	104
Emergency calls . . . . .	110
Disposal and recycling information . . . . .	110
Taking care of your Acer M900DF Smartphone . . .	111
Safety regulations . . . . .	113



# Get to know your Acer M900DF Smartphone

---

## Features and functions

Your new Acer M900DF Smartphone is a multi-functional tool packed with intuitive features and powerful applications that make organizing your information and synchronizing it with your personal activities an easy, efficient task. Your Acer M900DF Smartphone lets you:

- Synchronize email with your server while on the move.
- Make voice calls and video calls when connected to a 3G/EDGE/GPRS/HSUPA/HSDPA network.
- Connect wirelessly to your local network to access the internet and other network features.
- Use the customizable Home screen to access a wide range of software to perform common tasks on the Windows Mobile 6.1 Professional platform.
- Synchronize the information on your computer with the information on your Acer M900DF Smartphone.
- Exchange information between devices that have Bluetooth/WLAN capabilities.

# Other sources of help

To help you use your Acer M900DF Smartphone, we have designed a set of guides:

For information on:	Refer to:
Programs on your Acer M900DF Smartphone and additional programs that can be installed on your Acer M900DF Smartphone	This User Guide. Bundled in the Acer M900DF Smartphone Getting Started CD, it provides online reference for using your Acer M900DF Smartphone. The Acer M900DF Smartphone help file. Select <b>Help</b> from the <b>Start</b> menu.
Connecting to and synchronizing with your computer	The Acer M900DF Smartphone Quick Start Guide. ActiveSync Help on your computer. To view Help, click <b>Help</b> and then <b>Microsoft ActiveSync Help</b> .
Last-minute updates and detailed technical information	The Read Me files. Located in the Microsoft ActiveSync folder on your computer and on the Acer M900DF Smartphone Getting Started CD.
Up-to-date information regarding your Acer M900DF Smartphone	<a href="http://www.acer.com/">http://www.acer.com/</a>
Service enquiries	<a href="http://www.acer.com/support/">http://www.acer.com/support/</a>

## Accessing the help menus

Your Acer M900DF Smartphone features detailed help menus to aid you in making connections and using the embedded applications.

1. Tap **Start** > **Help** to access the Help menus.
2. Tap **Contents** to view all help topics or **Search** to find help on specific topics.



# Product registration

When using your product for the first time, it is recommended that you immediately register it. This will give you access to some useful benefits, such as:

- Faster service from our trained representatives
- Membership in the Acer community: receive promotions and participate in customer surveys
- The latest news from Acer

Hurry and register, as other advantages await you!

## How to Register

To register your Acer product, visit our website at <http://registration.acer.com>. Choose your country and follow the simple instructions.

After we receive your product registration, you will be sent a confirmation email with important data that you should keep in a safe place.



# Chapter 1: Set Up

---

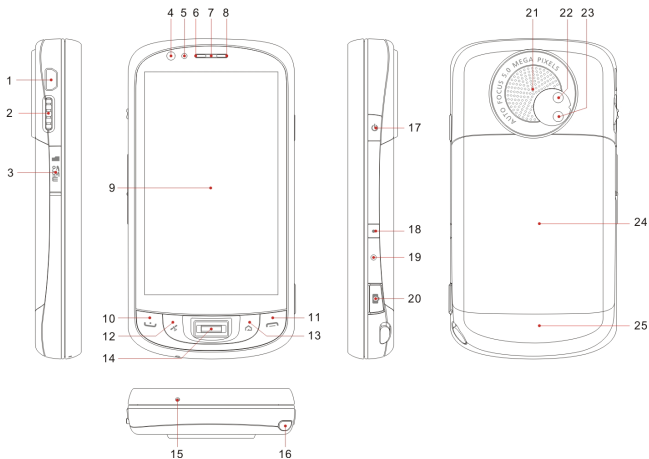
## Unpack your smartphone

Your Acer M900DF Smartphone comes packed in a cardboard box. Carefully unpack the box and remove the contents. If any of the following items are missing or damaged, contact your dealer immediately:

- Acer M900DF Smartphone
- Battery
- AC adapter

# Get to know your smartphone

## Views



No.	Item	Description
1	Mini USB connector	Connect to a USB cable/headphones/charger.
2	3-way rocker wheel	Scroll through items on the display. Press inwards to activate the selected item.
3	Micro SD card slot	Expand your device's memory capacity.
4	Video conference camera	Camera for video calls.
5	Light sensor	Senses ambient light to adjust screen brightness for comfortable viewing.
6	Bluetooth/WLAN/GPS indicator	Indicates Bluetooth, WLAN and GPS status.

No.	Item	Description
7	Phone speaker	Emits audio from your smartphone; suitable for holding to your ear.
8	Charge indicator	Indicates battery charge status.
9	Touchscreen	800 x 480 pixel screen to display data, phone content and enter information.
10	Talk/send button	Activate phone/dial/view recently dialed numbers/answer a call.
11	End button	Press to end a call/disconnect GPRS; press and hold to turn the phone function on/off.
12	GPS button	Activate the GPS viewer.
13	Back button	Return to the Home screen.
14	Fingerprint reader	Secure your phone using Biometrics; navigate through items on the screen.
15	Microphone	Internal microphone.
16	Stylus	Use to enter information or select items on the touch screen.
17	Power button	Press to turn the screen on/off or enter sleep mode; press and hold to turn the Smartphone off.
18	Record button	Press to launch the recording toolbar.
19	Reset pinhole	Insert the stylus into this hole to reset the device.
20	Camera button	Activate the camera or take a picture. Press down halfway to auto-focus.
21	Speaker	Emits audio from your smartphone; suitable for handsfree use.
22	Main camera	A 5-megapixel camera for taking high-resolution images.
23	Flash	Used to illuminate an object when taking photos in low-light conditions.
24	Battery cover	Covers the battery/SIM card bay.
25	Lower locking panel	Moves up and down to lock the battery cover in place.

# LED indicators

## Bluetooth/WLAN/GPS indicator:

LED Color	State	Description
White	Flashing	GPS active
Amber	Flashing	WLAN connected
Blue	Flashing	Bluetooth on

## Charge indicator:

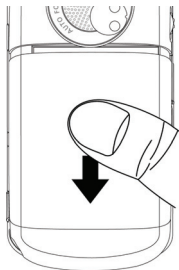
LED Color	State	Description
Red	Flashing	Battery is low and needs recharging/alarm notification (missed call, new message, etc.)
	Steady	Battery is charging
Green	Flashing	Phone is active
	Steady	Battery fully charged

# Install the SIM card

To take full advantage of your Acer M900DF Smartphone's telephony capabilities, you must install a SIM card. The SIM card holder is located beneath the battery.

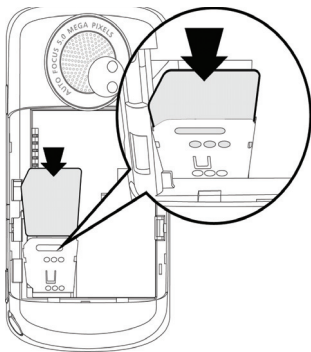
## Open the battery compartment

Gently, but firmly slide the battery cover down to release it. Remove the battery cover.



## Insert the SIM and replace the battery

Insert the SIM card into the SIM holder as shown.



Place the battery into the battery compartment, lining up the battery connectors with those on the side the compartment.

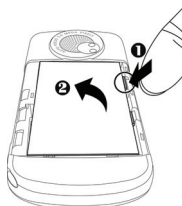
Slide the battery cover back and press the lower locking panel upwards until it clicks into place.



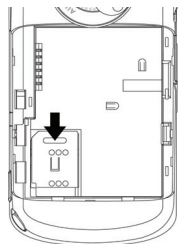
**CAUTION:**  
**RISK OF EXPLOSION IF BATTERY IS REPLACED  
BY AN INCORRECT TYPE.  
DISPOSE OF USED BATTERIES ACCORDING TO  
THE INSTRUCTIONS.**

## Remove the SIM card and battery

Open the battery compartment as shown in **“Open the battery compartment”** on **page 15**. Using the small tab on the upper right side of the battery, carefully lift it out of its compartment.



Use the tip of the stylus to carefully unlock the SIM card holder by pushing it down. Lift up the holder and remove the SIM card.



**Note:** Place your Acer M900DF Smartphone on a flat but soft surface when performing this step, to avoid scratching or damaging the screen.



Replace the battery and battery cover as shown in **“Insert the SIM and replace the battery” on page 15.**

## SIM card lock

Your Acer M900DF Smartphone may come with a SIM card lock, i.e., you will only be able to use the SIM card provided by your network operator.

To find out how to cancel a SIM lock, contact your network provider.

## Charge the battery

For initial use, you need to charge your Acer M900DF Smartphone for eight hours. After that you can charge it each day to recharge the battery to full capacity.

Connect the AC adapter cord to the mini USB connector on your Acer M900DF Smartphone.

Plug the AC adapter into any AC current outlet and charge the device for at least eight hours for the first charge.



**Tip:** We recommend you get into the habit of leaving your Acer M900DF Smartphone charging overnight, when not in use. This way you will not have to worry about recharging during the daytime, when it may be inconvenient.

## Power LED status during charging

Charging: LED indicator steady red.

Charging complete: LED indicator steady green.

If the battery level becomes low in the course of normal use, a status icon appears on the Acer M900DF Smartphone screen indicating low battery status and an alarm sounds. The charge indicator will flash red.

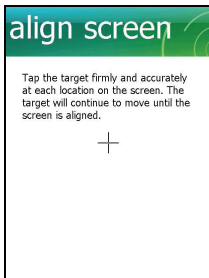
# Turn on for the first time

To turn on your Acer M900DF Smartphone for the first time, press and hold the power button until the system bootup screen appears.

You will be required to enter the Master Password (default is four zeroes: 0000) to complete the setup process. Use the embedded numeric keypad or onscreen number pad to enter the Master Password.

Tap the screen to set up your Acer M900DF Smartphone.

Follow the onscreen instructions to align the screen, practice using the stylus, set the date and time, and configure a password to protect your Acer M900DF Smartphone.



## Install add-on applications

After you've finished the initial setup, you will be asked if you want to install the following add-on applications:

- **Acer Album:** Displays photos and images in thumbnail and full-screen views.
- **Acer Namecard Manager:** Detects and stores text from photos of business cards for easy contact management.

- **Acer Backup Utility:** Creates backup copies of your calendar, contacts, tasks, personal profile, network settings, My Documents and messages.
- **Acer Voice Commander:** Uses voice commands to look up contacts, make phone calls, retrieve calendar information and control media playback.
- **Acer Satellite Data Update:** Accelerates GPS positioning by ensuring constantly updated satellite reference data.
- **Acer Easy Keyboard:** Provides an easy-to-use onscreen keyboard with larger keys.
- **Acer SIM Manager:** Manages contact data stored on the SIM card.
- **Acer Streaming Player:** Plays back streamed video content from the Internet.

Tap **Next** to continue. The installation of the chosen and other applications and tools will continue.

## Set up fingerprint security

Once you've finished installing the add-on applications, you will be asked to set up the fingerprint security features of your Acer M900DF Smartphone. You will need to swipe your selected finger four times to enroll it with the application.

Once you have set up fingerprint security, you can swipe your finger to access the phone or the other functions described in **"Security settings"** on page 61.

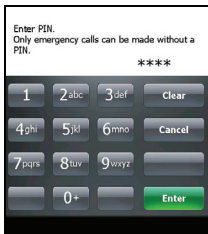


**Note:** You can opt to skip this step by tapping **OK** in the top right-hand corner of the screen, however, it is recommended that you set up the security features now.

## Enter your PIN code

When you install a SIM card for the first time, you will have to enter a PIN code using embedded numeric keypad or the onscreen number pad.

If the PIN code you enter is incorrect, a warning message appears.



## Activating a new SIM card

If you are using your SIM card for the first time, it may require activation. Contact your network operator for details on how to do this.

## The Home screen

After rebooting, your Acer M900DF Smartphone will display the Home screen. You will be asked if you want to view the Icon Matrix or Acer 3D view as the default.

The Acer 3D view gives you icon-based access to many of the applications and features of your Acer M900DF Smartphone. You can scroll from side to side by dragging your finger or sty-

lus to the left or right (only part of the screen will be visible at any time).

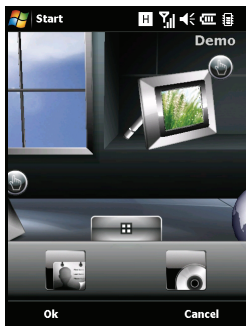


Tap an icon to launch the following features:

No.	Feature	Description
1	Clock	View your set locations on the globe.
2	Email	Launch the email application; also indicates any unread mails.
3	Messages	Launch the messaging application; also indicates any unread messages.
4	Calls	Open the list of recently dialed numbers, missed calls.
5	Weather	View local weather forecasts for your set locations.
6	Calendar	Open your calendar to view upcoming appointments.
7	Pictures	View content in <i>My pictures</i> as a slideshow.

No.	Feature	Description
8	Bookmarks	Open your <i>Favorites</i> folder.
9	Settings	Open the toolkit to customize your Acer M900DF Smartphone.
10	Programs	Open the <i>Quick Menu</i> ; you can set shortcuts here for quick access to frequently used applications and programs.
11	Contacts	Add Contacts from your SIM and phone contact lists to this handy "favorites" list.
12	Music	Search for and play music files stored on your phone.

You can add or remove icons by tapping and holding anywhere on the Acer 3D view. This will reveal a tab that you can tap and drag up to show additional functions. Tap and drag icons between the desktop and the tab to add or remove them. You can also move the icons on the desktop while the tab is visible.



Alternatively, if you prefer a more traditional appearance, you can swipe your finger up or down the screen to use the Icon Matrix.



## Connect to your PC and synchronize data

You can synchronize the data on your Acer M900DF Smartphone with the data on your PC using the supplied USB sync cable and the Windows Vista Sync Center.

Refer to **“Connect to a PC and install software”** on page 79 for more details on connecting and synchronizing.





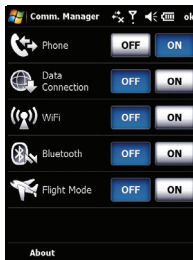
# Chapter 2: Making Calls

This chapter shows you how to make voice and video calls, and the various options available to you during your call.




## Before making a call

The phone function needs to be turned on before you can make voice and video calls; you can turn the phone on from the Comm. Manager (refer to **“Comm. Manager” on page 66**), or by pressing and holding the End key.

1. To access the Comm. Manager, tap any of the icons at the top of the screen or **Start > Settings > Connections tab > Comm. Manager**.
2. Tap the phone connection icon so it displays **On**.



## Make a call


1. From the Home screen, press  to open the onscreen number pad to enter the telephone number, or use the embedded numeric keypad.
2. Press  to make the call.
3. To end the call, press  or tap **End** on the call screen.



**Note:** Press  to return to the Home screen from the call screen.

# The onscreen number pad

The onscreen number pad allows you to dial numbers with the stylus.

To access the onscreen number pad press , the Talk/send button, or tap **Start > Phone**.



## Make a voice/video call

To make a call from your Acer M900DF Smartphone you can dial the number using the onscreen number pad or the embedded numeric keypad. Please refer to **“The embedded numeric keypad” on page 39**.

## Dial from the onscreen number pad

1. Enter the number you want to call by tapping the onscreen number pad with the stylus.
2. Tap **Talk** (for voice calls) or **Video Call** (for video calls) to dial the number.

## Make a call to one of your contacts

1. Your contacts will be displayed above the onscreen number pad.
2. Tap the contact you want to call. The contact's details are shown.
3. Tap the number you want to call.


## Dial from the Speed Dial




Any contacts in your contact list will automatically be added to your Speed Dial. Tap **Speed Dial** beneath the Home screen and tap the contact you wish to call. You can opt to arrange numbers alphabetically or by the frequency with which you call the numbers. Swipe your finger up or down the screen to scroll through the list of contacts or tap a letter in the bar at the bottom of the page.

## Dial a number from Call History

Your Call History is also displayed above the onscreen number pad, and displays all received, dialed, and missed calls.

Tap a number to view the call details. To redial any number in the call history, select the number and press  or tap **Call**.

Missed calls will be displayed in the telephone icon on the Home Page as well as at the top of the screen using the  icon.

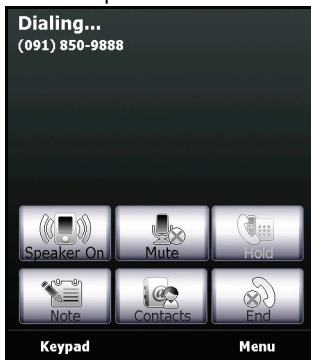
## Dial from other applications

You can dial numbers quickly and easily even when using other applications.

1. Press **Start > Phone**.
2. Make your call.
3. When you have finished your call, tap **X** in the top right corner of the screen, to return to the application you were using before you made the call.

# The voice call screen

Once you have dialed your number the voice call screen appears, where several options are available.



Turn on the speakerphone.



Mute the call.



Put the current call on hold.



Add a note.



Tap to enter the contacts list.



End the call.



Display the keypad.



Open the menu.

# The voice call/video call menu

Tap **Menu** on the voice call or video call screen to access the menu. The menu options available are:

Action	Description
Hold	Put the call on hold.
Mute/Unmute	Mute/unmute the call.
Turn Speakerphone On/Off	Turn the speakerphone on/off.
Turn Hands-free On/Off	Turn the handsfree feature on/off.
Conference	Begin a conference call.
Paste	Paste a copied number from the clipboard into the number field on the voice call screen.
Save to Contacts	Save the entered number to contacts.
Create Note	Create a note.
Call History	Enter the call history screen.
Speed Dial	Enter the speed dial directory.
Options	Enter the phone settings screen.



**Note:** Certain options are only available during a call. These menu items are greyed out when not in a call.

# The video call screen

There are also several options available on the video call screen.



Turn the camera on or off.



Switch from the front camera to the back camera.



Decrease screen brightness.



Increase screen brightness.



Mute the call.




Change the image layout, make your or your contact's video the main picture, or view both videos side-by-side.



End the call.

## Turn the camera on and off

You can turn the camera on and off at any time during a video call.

To turn the camera on and off, tap the  icon on the video call screen.

## Onscreen call options

### Answer a call

Press  or tap **Answer** to answer a call.

For incoming video calls, position your Acer M900DF Smartphone so your picture is shown clearly on the screen.

### Reject a call

Press  or tap **Ignore** to reject a call.

### End a call


To end a call, press  or tap **End**.

### Put a call on hold

To put a call on hold, tap **Hold** on the voice call screen. Tap again to resume the call.

### Swap between calls

When you receive a second call while already on a call, a notification message will appear.

1. Press  to answer the incoming call and the first call will be put on hold.
2. Tap **Swap** on the voice call screen to switch between calls.

## Conference calls

If you have one or more calls on hold and another online, you can combine all calls to create a conference call.

1. Tap **Menu** > **Conference**. All calls are combined.
2. To speak to selected participants privately during your conference call, tap **Menu** > **Private**.
3. Select the participant you wish to talk to in private.
4. To resume the conference call, tap **Menu** > **Conference**.

Press  or tap **End** and all participants will be disconnected.

## Dial an international number

When dialing international numbers, there is no need to enter the international direct dialing prefix ('00' etc.) before the country code. Simply tap and hold **+0** on the onscreen number pad until **+** appears onscreen, or press **+** on the embedded numeric keypad (<Fn> + <G>).



.....  
**Warning: International call rates can vary greatly depending on the country you are calling and your network provider. We suggest you check all call rates with your network provider, to avoid excessive phone bills. If you are using your Acer M900DF Smartphone abroad, roaming charges will apply. Consult your network provider for roaming rates specific to the country you are visiting before you leave.**  
.....

## Use the speakerphone

The speakerphone function allows you to make calls without having to hold the Acer M900DF Smartphone. This handsfree function is especially useful when driving.

To activate the speakerphone, tap **Speaker On** on the voice call screen. Tap **Speaker Off** to disable the speakerphone.



## Add notes


You can write or type notes during a call to record important information and view it at a later date.


1. Tap **Note** on the voice call screen.
2. Use the onscreen keyboard to enter letters and characters or the stylus to write handwritten notes.
3. Tap **OK** when you have finished to save the note.

To view the notes at a later date, tap **Start > Programs > Notes**.

Tap the note you want to open and view.

## Mute a call

To mute a call, tap **Mute** on the voice call screen or  on the video call screen to switch off the microphone. Tap


**Unmute** or  to switch the microphone back on.


## Save a dialed number to contacts

You can save a number you have dialed to your contacts for future use.

1. Select the number from the Call History list, and tap **Save**.
2. Enter the contact's information and tap **OK** to save.

## Redial a missed call


When you have a missed call, the  icon appears at the top of the Home screen, while the phone icon will display the number of missed calls.

1. Tap **View** to display the missed call details.
2. Select the call from the list and press  or tap **Call**.

## Speed dial

Tap **Speed Dial** at the bottom of the Home Screen to view all your contacts as tiles indicating the contact name and number. You can sort the tiles alphabetically or by the frequency with which you have dialed the numbers. Tap a tile to immediately dial that contact.

## Call History

View recent calls by accessing Call History: open the onscreen number pad by pressing ; then tapping **Call History**.

## Call History Menu options

There are various options available in the Call History Menu.

- Tap **Filter** to organize the call history view. For example, tap **Filter** > **Missed** and only missed calls will be displayed.
- Tap **Delete All Calls** to delete all calls from the call history list.

# Chapter 3: Input Devices

---

This section will take you through the various input methods available to you on your Acer M900DF Smartphone.

## The stylus

The stylus is used to select items and enter information.

On your Acer M900DF Smartphone, the stylus replaces the mouse. Carefully remove the stylus from its holder to use.

**Tap:** Touch the screen once with the stylus to open items and select options.

**Drag:** Hold the stylus on the screen and drag across the screen to select text and images. Drag on a scroll bar to scroll up and down the screen.

**Tap and hold:** Tap and hold the stylus on an item to see a list of actions available for that item. On the pop-up menu that appears, tap the action you want to perform.

The stylus is also used for handwritten input. Refer to **“The onscreen keyboard” on page 37** for more details.

## The fingerprint reader


The fingerprint reader can be used to navigate up, down, left and right through screens and menu by sliding your finger up, down, left to right on the reader. Tap the fingerprint reader to select menu entries and execute shortcut icons.

# The application buttons

The buttons are set to access the following applications by default:

Button 1 - Voice Commander or Record; press and hold to launch the Notes function

Button 2  - GPS Viewer

Button 3  - Home screen

Button 4 - Camera

We recommend that you use these defaults whenever possible.



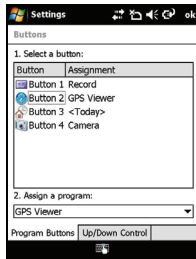
**Tip:** The four application buttons listed above can be configured to launch applications that you use the most.

To configure which applications to launch with each button, tap **Start > Settings > Buttons**.

Select the button you wish to configure from the list, then select the program to assign to the button from the drop-down list below.

Tap **OK** to confirm and save.

As the buttons have icons printed on them, Acer strongly recommends retaining the default settings. This avoids confusion when using your Acer M900DF Smartphone.

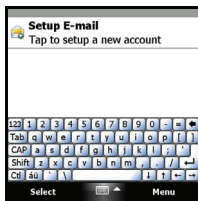


# The onscreen keyboard

You can activate an onscreen keyboard in certain applications when entering data.

Tap the keyboard icon at the bottom of the screen to display the keyboard. Tap again to hide the keyboard.

Tap the arrow next to the keyboard symbol to select different input options.



Mode	Description
Block Recognizer*	Write using letters, numbers, symbols and punctuation marks to be converted to text.
Keyboard (Default)	Displays a standard keyboard. Tap to enter letters, numbers and use function keys.
Letter Recognizer*	Write uppercase letters, lowercase letters, numbers and punctuation marks to be converted into text.
Symbols	Displays all symbols and special characters.
Transcriber*	Use the stylus to write in cursive, mixed or print handwriting to be converted into text.

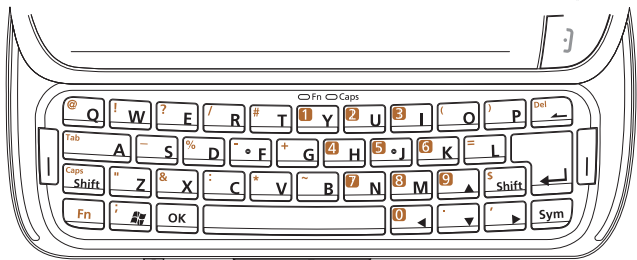


**Note:** The handwriting function can take some practice getting used to. Tap the ? symbol, visible when one of the handwriting options (\*) is active, to view writing demonstrations and access the Help menus.

Tap **Options** from the keyboard menu to adjust options and settings for each input mode.


# The QWERTY keyboard







Your Acer M900DF Smartphone features a 39/41-key QWERTY keyboard which offers all functions of a regular keyboard in a compact and ergonomic design.



Your Acer M900DF Smartphone has a key layout similar to your desktop or notebook computer for greater ease of use. Your Acer M900DF Smartphone keyboard also has an embedded numeric keypad (highlighted in orange) for entering number data or dialing phone numbers.

Furthermore, keys that are not part of the embedded numeric keypad can be used to enter symbols (marked in orange), symbols are entered by pressing <Fn>, and then pressing the key with the desired symbol printed on it. Certain keys have specific functions, as indicated in the table below.

Key	Name	Description
	Backspace	Press to delete a character to the left of the cursor or a highlighted block of characters.  Press <Fn> and then this key to delete the character to the right of the cursor.

Key	Name	Description
	Enter	Press to move to the next line when entering text or numbers or to enter commands.  Press to begin a voice call after entering the phone number.
	Space bar	Press to enter a space.
	Symbol	Type a character, then press this key to add a symbol, such as an accent, to the character.
	Windows	Press to bring up the Windows Start menu, press twice to return to the Today screen.
	Tab	Press to insert a tab, or to jump to the next field or item (if supported by the application).
	Function	Press to activate the numeric keypad and other special key characters (marked in orange).  Press twice to enter persistent numeric/symbol mode (the blue <i>Fn</i> LED at the top of the keyboard will light up). Press twice to return to text mode.
	Shift/Caps lock	Press once and the next character to be entered will be uppercase.  Press twice to enter persistent numeric/symbol mode (the blue <i>Caps</i> LED at the top of the keyboard will light up). Press twice to return to text mode.

## The embedded numeric keypad

The keyboard of your Acer M900DF Smartphone features an embedded numeric keypad. The numbers are printed on the keys in an orange background. To use the keypad, press the <Fn> key twice to illuminate the blue *Fn* LED and then press the

corresponding keys to enter numbers. To enter a single number in a line of text, press the <Fn> key once and press the key with the number you want to enter (the LED will not light up).

## The symbol key

The symbol key allows you to add symbols, such as accents, to the characters you enter. Enter the character and then press the **Sym** key to progress through the available alternatives.

## Configure input settings

You can change the default input method when using the onscreen keyboard.

1. Tap **Start > Settings > Personal tab > Input > Input Method** tab.
2. Select the input method you prefer from the list.
3. When certain modes are selected further options are available. In these cases, tap **Options** to view further settings.
4. Tap **OK** to confirm and save.

## Enable word completion

Your Acer M900DF Smartphone makes writing emails, messages and documents more efficient with the help of the word completion feature. This feature suggests words as you type.

1. Tap **Start > Settings > Personal tab > Input > Word Completion** tab.
2. Select the options you want to activate.
3. Tap **OK** to confirm and save.



## Other input options

You can also configure voice recording options, zoom levels and grammar rules on the Input Settings screen.

1. Tap **Start** > **Settings** > **Personal** tab > **Input** > **Options** tab.
2. Select and configure the settings as appropriate.
3. Tap **OK** to confirm and save.



.....  
**Note:** Refer to the Help menus for more information on adjusting input settings.  
.....



# Chapter 4: Messaging

---

This chapter shows you how to set up and use the SMS, MMS and email functions of your Acer M900DF Smartphone.

## The messaging screen

All SMS, MMS and email messages are accessed via the messaging screen.

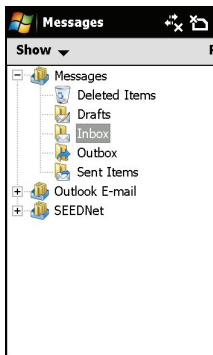
To access the messaging screen, tap **Start > Messaging > Messages**. Then tap the drop-down menu in the top left corner of the messaging screen to view the folder list.

All email accounts, SMS and MMS folders are displayed here. Tap on the plus sign next to each folder to view the subfolder list. Each folder features the following subfolders:

- Deleted Items: Displays all messages you have selected to delete.



**Note:** To completely erase messages, you will need to delete them from the Deleted Items folders as well. Tap **Menu > Tools > Empty Deleted Items** to accomplish this.



- Drafts: Displays all draft messages.
- Inbox: Displays all received messages.
- Outbox: Displays messages in the process of being sent.
- Sent Items: Displays all sent messages.

Tap a subfolder to open it. Tap **Inbox** to return to the main messaging screen. Tap **Menu** for a list of options appropriate to the selected folder.

## Manage your folders

You can select synchronization, download and other settings for certain folders. To manage your folders, tap **Menu > Tools > Manage Folders**, tap and hold on the folder name to open a menu of action items. Tap **Folder Options** to open and modify the settings for that folder.

## Text (SMS) messages

You can use your Acer M900DF Smartphone to send text messages to other mobile phones. Each text message can contain up to 160 characters.

## Create and send text messages

1. Tap **Start > Messaging > Messages**. Then tap the drop-down menu in the top left corner of the messaging screen.
2. Tap the **Messages** folder and the Inbox appears.
3. Tap **New**. The message window appears.
4. Select a recipient and enter your message then tap **Send**.



.....  
**Tip:** You can request delivery notification to ensure that your message has reached its recipient. To do this, tap **Menu > Tools > Options > Accounts** tab from the Text Messages folder. Tap **Text Messages** and check the **Request delivery notifications** checkbox.  
.....

## Reply to text messages

When a new text message arrives a message icon appears at the top of the Home screen and a notification message is displayed.

1. Tap **Start > Messaging > Messages**. Then tap the drop-down menu in the top left corner of the messaging screen.
2. Tap the **Text Messages** folder and the Inbox appears.
3. Tap a message to open it.
4. Tap **Reply** to reply to the message and the message window appears.
5. Enter your message and tap **Send**.

## Sort text messages

You can sort your text messages by message type, sender, received messages and message subject.

Tap the **Sort by** drop-down menu in the top-right of the messaging screen, and select an option from the list.

## MMS messages

MMS messages are similar to text messages but also allow you to attach multimedia files such as pictures, audio or video clips. Each MMS message can be up to 300 kB in size.

## Set up MMS messaging

Before you can send MMS messages, you have to set up a connection and profile. Ask your network provider for the information required to complete the setup procedure.

1. Tap **Start > Settings > Connections tab > Connections**.
2. Tap **Add a new modem connection** under the **My ISP** section.
3. The **Make New Connection** screen appears.
4. Enter a name for the connection.
5. Select **Cellular Line (GPRS)** from the **Select a modem** list and tap **Next**.
6. Enter the access point name provided by your network provider.

7. Enter your user name, password and domain.
8. Tap **Finish** to save and complete setup.

## Set up MMS profiles

You can select and configure several MMS messaging profiles for different networks and environments.

1. Tap **Start > Messaging > Messages**, then tap the drop-down menu in the top left corner of the messaging screen.
2. Tap the **Messages** folder and the Inbox appears.
3. Tap **Menu > MMS Settings > MMS Settings** tab.
4. Tap a profile from the list. Tap **Edit** to view the selected profile settings.
5. Tap each field to adjust its setting. These fields should be automatically configured by your network provider. If so, we recommend you leave them as they are.
6. Tap **Done** once you have finished editing the profile.
7. Tap **Select** to select the profile from the list and tap **OK**.



.....  
**Note:** For further information on options available to you when editing or creating MMS profiles, refer to the Help menus.  
.....

## Create MMS messages

1. Tap **Start > Messaging > Messages**. Then tap the drop-down menu in the top left corner of the messaging screen.
2. Tap the **Messages** folder and the Inbox appears.
3. Tap **New** and the message window appears.
4. Enter the recipient (along with other recipients in the Cc and Bcc fields if necessary) and subject of the MMS.
5. To attach a picture or video clip, tap **Insert Picture/Video...** and select the file you want to attach.

6. To attach an audio file, tap **Insert Audio...** and select the file you want to attach. The audio file will be displayed in the message.
7. To insert text, tap **Insert Text** and enter your message. All attachments and text will now be displayed in the message window.
8. Tap **Send**.

## Reply to MMS messages

When a new MMS message arrives, a message icon appears at the top of the Home screen and a notification message is displayed.

1. Tap **Start > Messaging > Messages**, then tap the drop-down menu in the top left corner of the messaging screen.
2. Tap the **Messages** folder and the Inbox appears.
3. Tap a message to open it.
4. Tap **Menu > Reply** to reply to the message. The message window will appear.
5. Follow the steps described in **“Create MMS messages” on page 46** to compose your reply.
6. Tap **Send**.

## Sort MMS messages

You can sort your MMS messages by message type, sender, received messages and message subject.

Tap the **Sort by** drop-down menu in the top-right of the messaging screen, and select an option from the list.



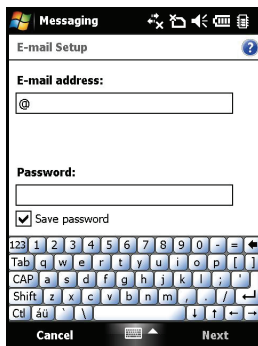
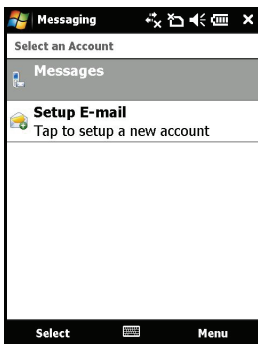
.....  
**Note:** For further information on options available to you when creating, replying to and sorting SMS and MMS messages, refer to the Help menus.  
.....

# Email

Your Acer M900DF Smartphone uses Outlook Mobile to manage email accounts. Tap **Start > Messaging** to open the messaging window. Tap **Setup E-mail** to set up your email account.

Enter your email address and password to set up the account. Select if you want to save your password or not.

When you've finished entering the information, tap **Next**. Your Acer M900DF Smartphone has pre-set definitions for a variety of popular ISPs and will recommend settings if your email address is recognized. Otherwise your Acer M900DF Smartphone will try to connect to the Internet to find the settings.





# Chapter 5: Home Screen Overview

---

## The Home screen

When you switch on your Acer M900DF Smartphone, the Home screen appears following boot up.

The Home screen is the main point from which you can navigate your Acer M900DF Smartphone. The screen features connection status information, displays the date and time, and features a set of shortcut icons that help you to access the most frequently used applications quickly and easily.

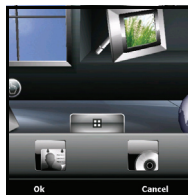
In the Acer 3D view, scroll from side to side by dragging your finger or stylus to the left or right (only part of the screen will be visible at any time) to reveal more icons.































Tap an icon to launch the following features:

No.	Feature	Description
1	Clock	View your set locations on the globe.
2	Email	Launch the email application; also indicates any unread mails.
3	Messages	Launch the messaging application; also indicates any unread messages.
4	Calls	Open the list of recently dialed numbers, missed calls.
5	Weather	View local weather forecasts for your set locations.
6	Calendar	Open your calendar to view upcoming appointments.
7	Pictures	View content in <i>My pictures</i> as a slideshow.
8	Bookmarks	Open your <i>Favorites</i> folder.
9	Settings	Open the toolkit to customize your Acer M900DF Smartphone.
10	Programs	Open the <i>Quick Menu</i> ; you can set shortcuts here for quick access to frequently used applications and programs.
11	Contacts	Add Contacts from your SIM and phone contact lists to this handy “favorites” list.
12	Music	Search for and play music files stored on your phone.

You can add or remove icons by tapping and holding anywhere on the Acer 3D view. This will reveal a tab that you can tap and drag up to show additional functions. Tap and drag icons between the desktop and the tab to add or remove them. You can also move the icons on the desktop while the tab is visible.



## Status icons

Icon	Description	Icon	Description
	New email, SMS or MMS		Missed call or calls
	WLAN access available		Telephone call connected
	WLAN connected		Call is being forwarded
	Connected to PC via USB		Call is on hold
	Signal strength		System sounds on
	No signal		Vibrate only, no system sounds
	Antenna off (telephone is off)		All system sounds off
	No phone service		Battery charge indicator
	Incoming telephone call		Low battery warning
	GPRS available		Battery is charging
	3G network available		3G connected
	GPRS connected		Bluetooth headset connected
	EDGE available		Synchronizing over EDGE
	EDGE connected		HSDPA/HSUPA network available

Icon	Description	Icon	Description
	Synchronizing over HSDPA/HSUPA		HSDPA/HSUPA connected

## Return to the Home screen

You can return to the Home screen from any application by tapping **Start > Today** or pressing the button.

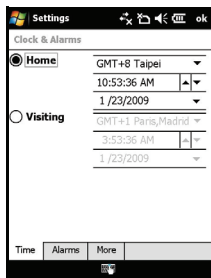
## Customize basic settings

### Set the date and time

To set the date and time, tap **Start > Settings > System tab > Clock & Alarms > Time** tab.

Tap **Home** and select your time zone from the drop-down menu. Set the time by tapping the up and down arrows. Select the date from the drop-down calendar.

When you have finished, tap **OK**. A confirmation message will appear. Tap **Yes** to save your settings.



## Personalize your Acer M900DF Smartphone

You can enter your personal information to easily identify your Acer M900DF Smartphone. This is especially useful if it should ever be lost or stolen. To enter owner information, tap **Start > Settings > Owner Information**.

Enter your name along with any other information you want to store.

Tap the **Notes** tab to add any additional notes.

Tap the **Options** tab to configure how this information is displayed.

Tap **OK** to confirm and save.



## Name your Acer M900DF Smartphone

Your Acer M900DF Smartphone uses a name to identify itself when connected to other computers. To specify a name, tap **Start > Settings > System tab > About > Device ID**.

Enter a name for your device. Add a description if necessary.

Tap **OK** to confirm and save.





# Chapter 6: Using the Camera


---

Your Acer M900DF Smartphone features two cameras, a 300K pixel VGA camera mounted on the front of the unit, and a 5-megapixel digital camera mounted on the rear. This section will take you through all the steps to get you up and taking photos and videos with your Acer M900DF Smartphone.






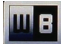






To activate the camera, press the camera button or go to **Start > Programs > Multimedia > Camera**.

## Camera icons and indicators



Icon	Description
	Adjust the camera mode. <ul style="list-style-type: none"><li>• Photo - Take a photograph.</li><li>• Video - Shoot a video.</li><li>• Continuous 3/5/9 - Take three, five or nine photos in a burst (select the number of photos by tapping the icon repeatedly).</li></ul>

---

Icon	Description
	Adjust the camera focus mode. <ul style="list-style-type: none"> <li>• Central Focus - Focus on the item in the center of the frame.</li> <li>• Face Detection - Detect and focus on faces.</li> <li>• Multi-zone - Focus using multiple reference points.</li> </ul>
	Adjust the image resolution.
	Apply an effect to photos taken: <ul style="list-style-type: none"> <li>• Normal - No effect is applied.</li> <li>• Greyscale - Takes black and white photos.</li> <li>• Negative - Uses negative colors when taking the photo.</li> <li>• Sepia - The photo is given a Sepia appearance.</li> <li>• Mirror - The object is mirrored.</li> </ul>
	Enter the advanced settings page.
	Exit and return to the previous screen.
	Set the white-balance mode.
	Set the best settings for the type of subject you're photographing.
	Turn the flash on or off, or set it to Auto; turn the spotlight on or off.
	Open the album to view thumbnails of stored pictures and videos.
	Displays the storage being used and approximately how many photos you can still take.
	Displays the battery charge status.
	Displays the current magnification. Slide your finger from side-to-side across the fingerprint reader to adjust magnification.



# Take a photo

1. Frame your subject and steady your Acer M900DF Smartphone.
2. Adjust any settings you require, such as brightness and scene mode. To zoom in or out slide your finger from side-to-side across the fingerprint reader.
3. Press the camera button down halfway until the image comes into focus. Push down fully to take the photo.

# Shoot a video

1. Frame your subject and steady your Acer M900DF Smartphone.
2. Press the camera button down fully to begin recording.
3. Press the camera button down fully to stop recording.

# Supported formats

The following file formats are supported:

Type	Formats
Image	JPEG and BMP
Video	3GP

# Save photos and videos to a micro SD card

Tap **Start** > **File Explorer** > **My Documents** > **My Pictures** (or **My Videos**). Tap and hold on the file you want to save to your micro SD card, select **Copy** or **Cut** from the pop-up menu.

Navigate to your micro SD card in **File Explorer**, tap and hold in the folder you want to save the image/video to, and select **Paste** from the pop-up menu.

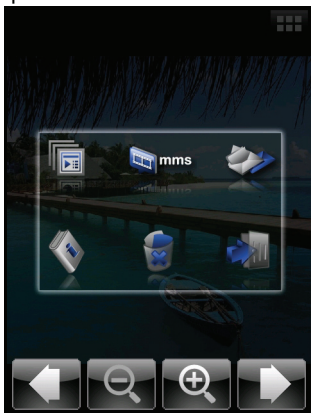
# Photo and video options

After you have taken your photo or video, it is automatically saved.



**Note:** The default locations for saving photos and videos are My Documents/My Pictures and My Documents/My Videos respectively. This can be changed from the Settings page.

Tap the Album icon and select a photo to view. Tap the photo to display the option icons.



From this interface, you can start a slideshow with all the pictures in the folder, send the current picture to a contact as an MMS or email message, view the picture's information, delete the picture or return to the thumbnail view.

You can also zoom into the picture or zoom out and navigate to the previous or following file.

# Edit photos

You can crop or rotate your saved photos.

1. Tap **Start > Programs > Pictures & Videos**.
2. All your photos and videos are displayed as thumbnails. Select a photo to edit.
3. Tap **Menu** to view the list of editing options.

