

# Touchpad

The built-in touchpad is a PS/2-compatible pointing device that senses movement on its surface. This means the cursor responds as you move your finger on the surface of the touchpad. The central location on the palm rest provides optimum comfort and support.



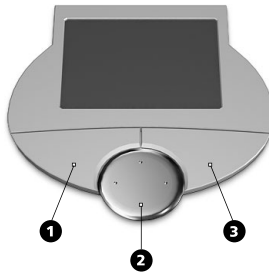
-----

**Note:** When using an external USB or serial mouse, you can press **Fn-F7** to disable the touchpad. .



## Touchpad basics

The following items teach you how to use the touchpad:



- Move your finger across the touchpad to move the cursor.
- Press the left (1) and right (3) buttons located on the edge of the touchpad to do selection and execution functions. These two buttons are similar to the left and right buttons on a mouse. Tapping on the touchpad produces similar results.
- Use the 4-way scroll (2) key (top/bottom/left/right) to scroll a page up, down, left or right. This button mimics your cursor pressing on the vertical and horizontal scroll bars of Windows applications.

Function	Left button	Right button	4-way scroll key	Tap
Execute	Click twice quickly			Tap twice (at the same speed as double-clicking a mouse button)
Select	Click once			Tap once
Drag	Click and hold, then use finger to drag the cursor on the touchpad			Tap twice (at the same speed as double-clicking a mouse button) then hold finger to the touchpad on the second tap and drag the cursor
Access context menu		Click once		
Scroll			Click and hold the button in the desired direction (up/down/left/right)	



**Note:** Keep your fingers dry and clean when using the touchpad. Also keep the touchpad dry and clean. The touchpad is sensitive to finger movements. Hence, the lighter the touch, the better the response. Tapping harder will not increase the touchpad's responsiveness.

# Storage

This computer supplies you the following media storage:

- High-capacity Enhanced-IDE hard disk
- High-speed optical drive

## Hard disk

The high-capacity hard disk is the answer to your storage needs.

## Optical drive

The computer comes with a USB CD-ROM drive or an IEEE 1394 DVD/CD-RW combo drive.

# Audio

The computer comes with 16-bit high-fidelity PCI stereo audio, and includes a built-in sensitive microphone and stereo speaker.



There are audio ports on the right panel of the computer. See “Right view” on page 7 for more information on connecting external audio devices.

## Adjusting the volume

Adjusting the volume on the computer is as easy as pressing some buttons. See “Hot keys” on page 21 for more information on adjusting the speaker volume.

# Power management

This computer has a built-in power management unit that monitors system activity. System activity refers to any activity involving one or more of the following devices: keyboard, mouse, floppy drive, hard disk, and video memory. If no activity is detected for a period of time (called an inactivity timeout), the computer stops some or all of these devices in order to conserve energy.

This computer employs a power management scheme that supports ACPI (Advanced Configuration and Power Interface) which allows for maximum power conservation and maximum performance at the same time. Windows handles all power-saving chores for your computer.

# Moving around with your TravelMate

This section gives you tips and hints on things to consider when moving around or traveling with your computer.

## Disconnecting from the desktop

Follow these steps to disconnect your computer from external accessories:

- 1** Save your work in progress.
- 2** Remove any media, diskette or compact disc, from the drive(s).
- 3** Shut down the operating system.
- 4** Turn off the computer.
- 5** Close the display cover.
- 6** Disconnect from the AC adapter.
- 7** Disconnect the keyboard, pointing device, printer, external monitor, and other external devices.
- 8** Disconnect the Kensington lock if you are using one to secure the computer.

## Moving around

“when you are just moving within short distances, for example, from your office desk to a meeting room”

### Preparing the computer

Before moving the computer, close and latch the display cover to place it in Sleep mode. You can now safely take the computer anywhere you go within the building. To bring the computer out of Sleep mode, open the display; then press, slide and release the power switch.

If you are taking the computer to a client's office or a different building, you may choose to shut down the computer:

- 1** Click on **Start, Turn off Computer**.
- 2** Select **Turn Off**.

- or -

you can put the computer in Sleep mode by pressing **Fn-F4**. Then close and latch the display.

When you are ready to use the computer again, unlatch and open the display; then press, slide and release the power switch.



**Note:** If the sleep indicator is off, the computer has entered Hibernation mode and turned off. If the power indicator is off but the sleep indicator is on, the computer has entered Sleep mode. In both cases, press, slide and release the power switch to turn the computer back on. Note that the computer may enter Hibernation mode after it is in Sleep mode for a period of time.

## What to bring to short meetings

A fully charged battery runs the computer for about two and a half hours under most circumstances. If your meeting is shorter than that, you probably do not need to bring anything with you other than the computer.

## What to bring to long meetings

If your meeting will last longer than two and a half hours or if your battery is not fully charged, you may want to bring the AC adapter with you to plug in your computer in the meeting room.

If the meeting room does not have an electrical outlet, reduce the drain on the battery by putting the computer in Sleep mode. Press **Fn-F4** or close the display cover whenever you are not actively using the computer. To resume, open the display (if closed); then press, slide, and release the power switch.

## Taking the computer home

“when you are moving from your office to your home or vice versa”

### Preparing the computer

After disconnecting the computer from your desktop, follow these steps to prepare the computer for the trip home:

- Make sure that you have removed any media, diskette and compact disc, in the drive(s). Failure to remove the media can

damage the drive head.

- Pack the computer in a protective case that can prevent the computer from sliding around and cushion it if it should fall.



-----

**Caution:** Avoid packing items next to the top cover of the computer. Pressure against the top cover can damage the screen.

## What to bring with you

Unless you already have some items at home, bring the following items with you:

- AC adapter and power cord
- The printed User's Guide

## Special considerations

Follow these guidelines to protect your computer while traveling to and from work:

- Minimize the effect of temperature changes by keeping the computer with you.
- If you need to stop for an extended period of time and cannot bring the computer with you, leave the computer in the trunk of the car to avoid exposing the computer to excessive heat.
- Changes in temperature and humidity can cause condensation. Allow the computer to return to room temperature, and inspect the screen for condensation before turning on the computer. If the temperature change is greater than 18°F (10°C), allow the computer to come to room temperature slowly. If possible, leave the computer for 30 minutes in an environment with a temperature between outside and room temperature.

## Setting up a home office

If you frequently work on your computer at home, it may be worthwhile to purchase a second AC adapter for use at home. With a second AC adapter, you can avoid transporting the extra weight to and from home.

If you use your computer at home for significant periods of time, you might also want to add an external keyboard, monitor, or mouse.



## Traveling with the computer

“when you are moving within a larger distance, for instance, from your office building to a client’s office building or traveling locally”

### Preparing the computer

Prepare the computer as if you were taking it home. Make sure that the battery in the computer is charged. Airport security may require you to turn on your computer when bringing it into the gate area.

### What to bring with you

Bring the following items with you:

- AC adapter
- Spare, fully-charged battery pack(s)
- Additional printer driver files if you plan to use another printer

### Special considerations

In addition to the guidelines for taking the computer home, follow these guidelines to protect your computer while traveling:

- Always take the computer as carry-on luggage.
- If possible, have the computer inspected by hand. Airport security X-ray machines are safe, but do not put the computer through a metal detector.
- Avoid exposing floppy disks to hand-held metal detectors.

## Traveling internationally with the computer

“when you are moving from country to country”

### Preparing the computer

Prepare the computer as you would normally prepare it for traveling.

### What to bring with you

Bring the following items with you:

- AC adapter
- Power cords that are appropriate to the country to which you are traveling
- Spare, fully-charged battery packs
- Additional printer driver files if you plan to use another printer
- Proof of purchase, in case you need to show it to customs officials
- International Traveler's Warranty passport

## Special considerations

Follow the same special considerations as when traveling with the computer. In addition, these tips are useful when traveling internationally:

- When traveling in another country, check that the local AC voltage and the AC adapter power cord specifications are compatible. If not, purchase a power cord that is compatible with the local AC voltage. Do not use converter kits sold for appliances to power the computer.
- If you are using the modem, check if the modem and connector is compatible with the telecommunications system of the country you are traveling in.

## Securing your computer

Your computer is a valuable investment that you need to take care of. Learn how to protect and take care of your computer.

Security features include hardware and software locks — a security notch and passwords.

### Using a computer security lock

A security keylock notch located on the rear panel of the computer lets you connect a Kensington-compatible key-based computer security lock.



Wrap a computer security lock cable around an immovable object such as a table or locked drawer handle. Insert the lock into the notch and turn the key to secure the lock. Some keyless models are also available.

### Using passwords

Three password types protect your computer from unauthorized access. Setting these passwords creates several different levels of protection for your computer and data:

- Supervisor Password secures your computer against unauthorized use (when the Password on boot parameter is enabled) and allows full access to the BIOS Utility.
- User Password secures your computer against unauthorized use (when the Password on boot parameter is enabled) and allows limited access to the BIOS Utility.

- Primary Hard Disk Password protects your data by preventing unauthorized access to your hard disk. Even if the hard disk is removed from the computer and moved to another computer, it cannot be accessed without the Primary Hard Disk Password.



**Important!** Do not forget your Supervisor and Primary Hard Disk Password! If you forget your password, please get in touch with your dealer or an authorized service center.

You can set, change and delete passwords using the BIOS Utility or the Notebook Manager. See “BIOS Utility” on page 52 and “Notebook Manager” on page 50.

## Entering a password



**Note:** If you wish to enter the BIOS Utility, you need to press F2 before the password prompt appears.

Follow these steps:

- 1 When a password is set, a password prompt appears in the center of the display screen.
  - Supervisor or User Password

Enter Password [       ]

- Primary Hard Disk Password

Enter Primary Master HDD User Password [       ]

- 2 Type in a valid password set for the computer: User, Supervisor or Primary Hard Disk (a block appears for each character you type), and press **Enter**.

If the password is correct, the computer continues booting into Windows (or enters the BIOS Utility if you press F2 before the password prompt appears).

If the password is incorrect, the following warning appears.

- Supervisor or User Password

Setup Warning
Invalid Password [Continue]

- Primary Hard Disk Password

HDD Password Invalidate
-------------------------

Press **Enter**, and re-enter a valid password.



**Important!** You have three chances to enter a password. If you fail to enter the password correctly after three tries, you need to restart the computer to try again. Slide and hold the power switch for four seconds to shut down the computer. Then turn on the computer again, and try again. If you fail to enter the Primary Hard Disk Password, please contact your dealer or an authorized service center.

## Setting passwords

Follow these steps:

- 1 Use the cursor keys to highlight a password parameter (Supervisor, User or Primary Hard Disk) and press the Enter key. The password box appears.

Set Password
Enter New Password [     ]
Confirm New Password [     ]



**Note:** Before you can set the User Password, the Supervisor Password has to be set.

- 2 Type a password in the Enter New Password field. The password may consist of up to eight alphanumeric characters (A-Z, a-z, 0-9).

- 3** Press **Enter**. Then re-enter the password in the Confirm New Password field, and press **Enter**.

Setup Notice
Changes have been saved. [Continue]

- 4** Press **Enter** to accept the changes and save the password.

## Changing a password

Follow these steps:

- 1** To remove a password, use the cursor keys to highlight a password parameter and press Enter. The following box appears.

Set Password
Enter Current Password [ ]
Enter New Password [ ]
Confirm New Password [ ]

- 2** Enter the current password, then press **Enter**. In the Enter New Password and Confirm New Password fields, type a new password.

Setup Notice
Changes have been saved. [Continue]

- 3** Press **Enter** to accept the changes and remove the password.

## Removing a password

Follow the steps for changing a password, except that you leave the Enter New Password and Confirm New Password fields blank.



## 2 Customizing your computer



After learning the basics of your TravelMate computer, let's get acquainted with the advanced features of your computer. In this chapter, you will learn how to add options, upgrade components for better performance, and customize your computer.

# Expanding through options

Your TravelMate offers you a complete mobile computing experience.

## Connectivity options

Ports allow you to connect peripheral devices to your computer as you would with a desktop PC. For instructions on how to connect different external devices to the computer.

### Fax/data modem

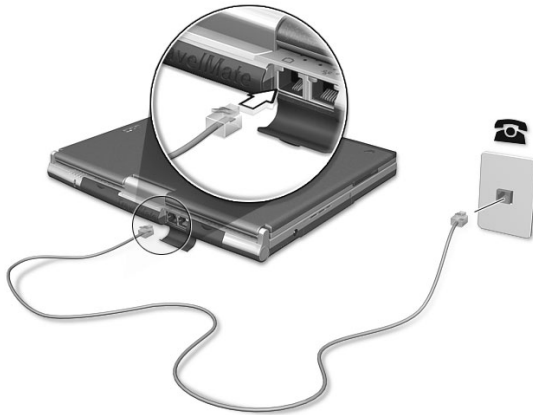
Some models have a built-in V.92 56Kbps software modem.



.....

**Warning! This modem port is not compatible with digital phone lines. Plugging this modem into a digital phone line will damage the modem.**

To use the fax/data modem port, connect a phone cable from the modem port to a telephone jack.

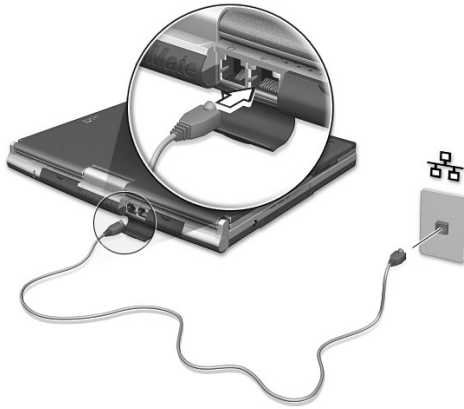


Start your communications software program. See your communications manual for instructions.

## Built-in network feature

The built-in network feature allows you to connect your computer to an Ethernet-based (10/100 Mbps) network.

To use the network feature, connect an Ethernet cable from the network jack on the rear of the computer to a network jack or hub on your network.



## Wireless communication

Available on select models, the wireless communication feature allows you to communicate with other wireless-equipped devices via 802.11b, 802.11a and/or Bluetooth protocols.



For more information on how to enable this feature, see “Launch Manager and wireless features” on page 51.

## Fast infrared

The computer's fast infrared (FIR) port allows you to do wireless data transfer with other IR-aware computers and peripherals such as infrared printers. The infrared port can transfer data at speeds of up to four megabits per second (Mbps) at a distance of up to one meter.

To use FIR, position two IR-aware devices such that their IR ports are no more than one meter apart and offset no more than 15 degrees.



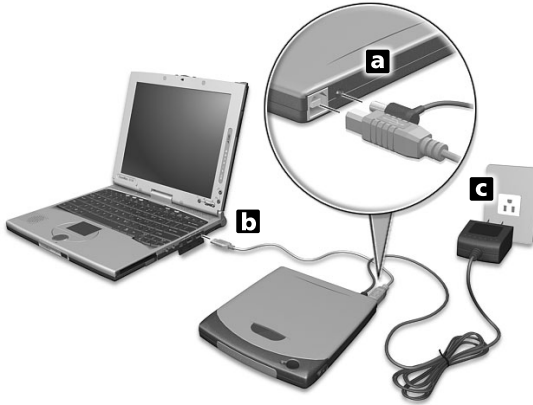
When the two computers are in position, simply begin the data transfer as you normally would. See your file transfer software for details.

## Universal Serial Bus

The Universal Serial Bus (USB 2.0) port is a high-speed serial bus which allows you to connect and daisy-chain USB peripherals without taking up precious system resources. Your computer has two ports available.

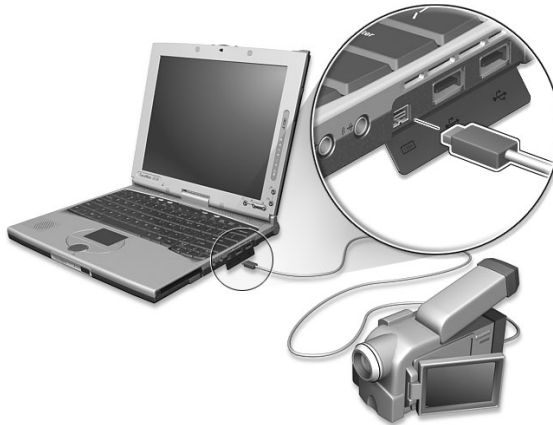
### Connecting your optical drive

Connect the AC adapter and the USB cable to the rear of the optical drive (a). Plug the other end of the USB cable to the computer (b). Connect the AC adapter to the power outlet (c).



### IEEE 1394

The computer's fast IEEE 1394 port allows you to connect IEEE 1394 supported devices like a digital video camera.



See your video or digital camera's documentation for details.

## PC Card slots

There is a type II CardBus PC Card slot found on the right side of the computer. This slot accepts credit-card-sized cards that enhance the usability and expandability of the computer. These cards should have a PC Card logo on them.

PC Cards (formerly PCMCIA) are add-on cards for portable computers, giving you expansion possibilities long afforded by desktop PCs. Popular type II cards include flash memory, SRAM, fax/data modem, LAN and SCSI cards. CardBus improves on the 16-bit PC card technology by expanding the bandwidth to 32 bits.



.....

**Note:** Refer to your card's manual for details on how to install and use the card and its functions.

## Inserting a PC Card

Insert the card into the slot and make the proper connections (e.g., network cable), if necessary. See your card manual for details.

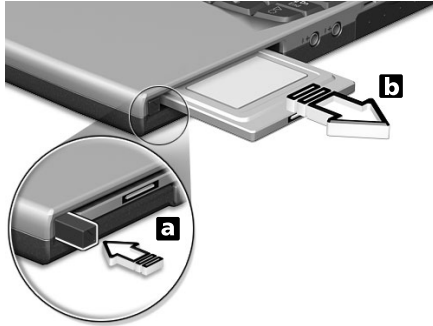


## Ejecting a PC Card

Before ejecting a PC Card:

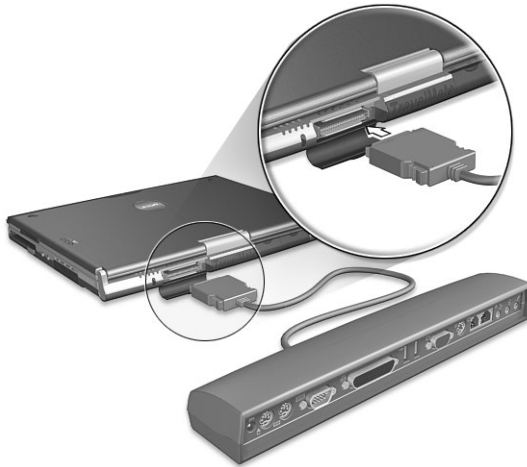
- 1 Exit the application using the card.
- 2 Left-click on the Safely Remove Hardware icon on the taskbar and stop the card operation.

- 3 Press the slot eject button (a) to pop out the eject button; then press it again (a) to eject the card (b).



## EasyPort

The EasyPort expansion device option adds a host of ports for your computer, and allows you to connect and disconnect peripherals from your computer in one quick step.



## Upgrade options

Your computer delivers superior power and performance. However, some users and the applications they use may demand more. This computer allows you to upgrade key components when you need increased performance.



.....

**Note:** Contact your authorized dealer if you decide to perform a key component upgrade.

## Memory upgrade

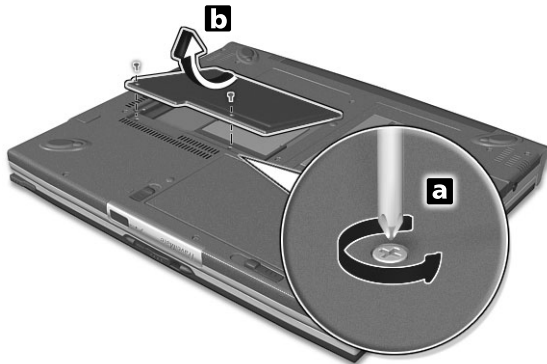
Memory is expandable to 2 GB, employing PC2100 266 MHz industry standard DDR (Double Data Rate) soDIMMs (Small Outline Dual Inline Memory Modules).

There are two memory slots on your computer, one of which is occupied by standard memory. You can upgrade memory by installing a memory module into the available slot.

### Installing memory

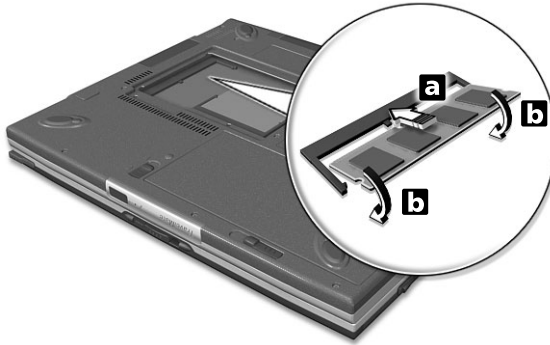
Follow these steps to install memory:

- 1** Turn off the computer, unplug the AC adapter (if connected) and remove the battery pack. Then turn the computer over to access its base.
- 2** Remove the screw (a) from the memory cover; then lift up and remove the memory cover (b).





- 3 Insert the memory module diagonally into the slot (a), then gently press it down (b) until it clicks into place.



- 4 Replace the memory cover and secure it with the screw.

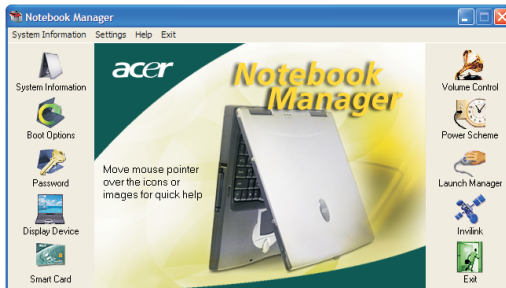
The computer automatically detects and reconfigures the total memory size.

## Notebook Manager

The computer has a built-in system setup program called Notebook Manager. The Windows-based Notebook Manager allows you to set passwords, the startup sequence of the drives, power management and other settings. It also shows current hardware configurations.

To start the Notebook Manager, press **Fn-F2** or follow these steps:

- 1 Click on **Start, All Programs**, then **Acer**.
- 2 Select the **Notebook Manager** application to run the program.



Please click on **Help** for online help information.