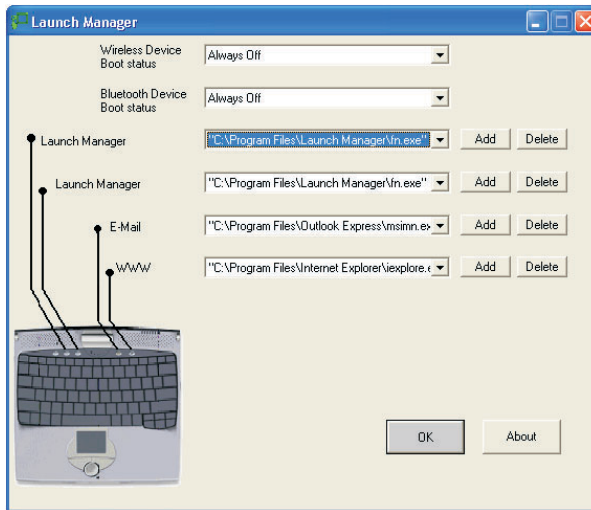


Launch Manager


Launch Manager allows you to set the four launch keys located above the keyboard. See “Launch keys” on page 24 for the location of the launch key.

You can access the Launch Manager by clicking on **Start, All Programs**, and then **Launch Manager** to start the application.



Launch Manager and wireless features

The boot status settings for Wireless Device (Wireless LAN) and Bluetooth Device determine if these wireless features are enabled or disabled at startup.

You can manually switch on or off Wireless LAN and Bluetooth by pressing the  button a certain number of times. The sequence is as follows:

- Wireless LAN off, Bluetooth off
- Wireless LAN on, Bluetooth off (wireless status icon lights red)
- Wireless LAN off, Bluetooth on (wireless status icon flashes green)
- Wireless LAN on, Bluetooth on (wireless status icon lights red and flashes green)

Manually turning on the wireless features does not change the default boot status setting which is re-enabled when you restart your computer.

BIOS Utility

The BIOS Utility is a hardware configuration program built into your computer's BIOS (basic input/output system).

Your computer is already properly configured and optimized, and you do not need to run this utility. However, if you encounter configuration problems, you may need to run it.

To access the BIOS Utility, press **F2** during the POST (power-on self-test) while the TravelMate logo is being displayed.

PhoenixBIOS Setup Utility			
Information	Main	Advanced	Security Boot Exit
CPU Type	Intel(R) Pentium(R) M processor 900MHz		
System Memory	640 KB		
Extended Memory	514048 KB		
HDD1 Serial Number	XXXXXX		
System BIOS Version	XXX-XXX		
VGA BIOS Version	XXXX		
KBC Version	XX.XX.XX		
Serial Number	XXXXXXXXXXXXXXXXXXXXXXXXXXXX		
Asset Tag Number	XXXXXXXXXXXXXXXXXXXX		
Product Name	TravelMate C110		
Manufacture Name	Acer		
UUID Number	XXXXXXXX-XXXX-XXXX-XXXX-XXXXXXXXXXXX		
F1 Help ↑↓ Select Item F5/F6 Change Values F9 Setup Defaults Esc Exit ← Select Menu Enter Select > Sub-Menu F10 Save and Exit			



Note: The sample screen shown above is for your reference only. Actual values may differ.

For optimum settings, press **F9** to load setup defaults. Then press **F10** to save the changes and exit the BIOS Utility.

3 Troubleshooting your computer

This chapter instructs you on how to deal with common system problems. Read it before calling a technician if a problem occurs. Solutions to more serious problems require opening up the computer. Do not attempt to open the computer by yourself. Contact your dealer or an authorized service center for assistance.

key link: www.acersupport.com

Frequently-asked questions

The following is a list of possible situations that may arise during the use of your computer. Easy answers and solutions are provided for each one.

I pressed the power switch and opened the display, but the computer does not start or boot-up.

Look at the Power indicator (refer to “Indicators” on page 18):

- If it is not lit, no power is being applied to the computer. Check the following:
 - If you are running on battery power, it may be low and unable to power the computer. Connect the AC adapter to recharge the battery pack.
 - Make sure that the AC adapter is plugged in properly to the computer and to the power outlet.
- If it is lit, check the following:
 - Is a non-bootable (non-system) diskette in the floppy drive? Remove or replace it with a system diskette and press **Ctrl-Alt-Del** to restart the system.
 - The operating system files may be damaged or missing. Insert the startup disk you created during Windows setup into the floppy drive and press **Ctrl-Alt-Del** to restart the system. This will diagnose your system and make necessary fixes.

Nothing appears on the screen.

The computer's power management system automatically blanks the screen to save power. Press any key to turn the display back on.

If pressing a key does not turn the display back on, three things might be the cause:

- The brightness level might be too low. Press **Fn**→ (increase) and **Fn**← (decrease) to adjust the brightness level.
- The display device might be set to an external monitor. Press the display toggle hot key **Fn-F5** to toggle the display back to the computer.
- If the Sleep indicator is lit, the computer is in Sleep mode. Press, slide, and release the power switch to resume.

Image is not full-screen.

Make sure that the resolution is set to 1024x768 which the system supports natively. Right-click on your Windows desktop and select Properties to bring up the **Display Properties** dialog box. Then click on the Settings tab to make sure the resolution is set to the appropriate resolution. Resolutions lower than the specified resolution are not full-screen on the computer or on an external monitor.

No audio is heard from the computer.

Check the following:

- The volume may be muted. In Windows, look at the volume control (speaker) icon on the taskbar. If it is crossed-out, click on the icon and deselect the Mute option.
- The speakers may be turned off. Press **Fn-F8** to turn the speakers on (this hot key also turns the speakers off).
- The volume level may be too low. In Windows, look at the volume control icon on the taskbar. You can also use the volume control buttons to adjust the volume. See "Hot keys" on page 21.
- If headphones, earphones or external speakers are connected to the line-out port on the computer's right panel, the internal speakers automatically turn off.

The keyboard does not respond.

Try attaching an external keyboard to the USB connector on the computer's rear. If it works, contact your dealer or an authorized service center as the internal keyboard cable may be loose.

The infrared port does not work.

Check the following:

- Make sure that the infrared ports of the two devices are facing each other (+/- 15 degrees) a maximum of 1 meter apart.
- Make sure that there is a clear path between the two infrared ports. Nothing should be blocking the ports.
- Make sure that you have the appropriate software running on both devices (for file transfers) or that you have the appropriate drivers (for printing to an infrared printer).
- During the POST, press **F2** to access the BIOS Utility and verify that

the infrared port is enabled.

- Make sure that both devices are IrDA-compliant.

I want to set up my location to use the internal modem.

To properly use your communications software (e.g., HyperTerminal), you need to set up your location:

- 1** Click on **Start, Control Panel**.
- 2** Double-click on **Phone and Modem Options**.
- 3** Begin setting up your location.

Refer to the Windows manual.

Troubleshooting tips

This notebook computer incorporates an advanced design that delivers onscreen error message reports to help you solve problems.

- If the system reports an error message or an error symptom occurs, see “Error messages” on page 59.

Error messages

If you receive an error message, note the message and take the corrective action. The following table lists the error messages in alphabetical order together with the recommended course of action.



Note: If your system displays one of the messages marked below with an asterisk (*), write down the message and contact your dealer. If your system fails after you have made the changes in the Setup menus, reset the computer, enter Setup and load the Setup defaults to correct the error.

Error Messages	Corrective Action
0200 Failure Fixed Disk	Fixed disk is not working or not configured properly. Check to see if fixed disk is attached properly. Run Setup. Find out if the fixed-disk type is correctly identified.
0210 Stuck key	Stuck key on keyboard.
0211 Keyboard error	Keyboard not working.
0212 Keyboard Controller Failed*	Keyboard controller failed test. May require replacing keyboard controller.
0213 Keyboard locked - Unlock key switch	Unlock the system to proceed.
0220 Monitor type does not match CMOS - Run SETUP	Monitor type not correctly identified in Setup
0230 Shadow Ram Failed at offset: <i>nnnn</i> *	Shadow RAM failed at offset <i>nnnn</i> of the 64k block at which the error was detected.
0231 System RAM Failed at offset: <i>nnnn</i> *	System RAM failed at offset <i>nnnn</i> of in the 64k block at which the error was detected.
0232 Extended RAM Failed at offset: <i>nnnn</i> *	Extended memory not working or not configured properly at offset <i>nnnn</i> .
0250 System battery is dead - Replace and run SETUP	The CMOS clock battery indicator shows the battery is dead. Replace the battery and run Setup to reconfigure the system.

Error Messages	Corrective Action
0251 System CMOS checksum bad - Default configuration used	System CMOS has been corrupted or modified incorrectly, perhaps by an application program that changes data stored in CMOS. The BIOS installed Default Setup Values. If you do not want these values, enter Setup and enter your own values. If the error persists, check the system battery or contact your dealer.
0260 System timer error*	The timer test failed. Requires repair of system board.
0270 Real time clock error*	Real-Time Clock fails BIOS hardware test. May require board repair.
0271 Check date and time settings	BIOS found date or time out of range and reset the Real-Time Clock. May require setting legal date (1991-2099).
0280 Previous boot incomplete - Default configuration used	Previous POST did not complete successfully. POST loads default values and offers to run Setup. If the failure was caused by incorrect values and they are not corrected, the next boot will likely fail. On systems with control of wait states, improper Setup settings can also terminate POST and cause this error on the next boot. Run Setup and verify that the wait-state configuration is correct. This error is cleared the next time the system is booted.
0281 Memory Size found by POST differed from CMOS	Memory size found by POST differed from CMOS.
02B0 Diskette drive A error 02B1 Diskette drive B error	Drive A: or B: is present but fails the BIOS POST diskette tests. Check to see that the drive is defined with the proper diskette type in Setup and that the diskette drive is attached correctly.
02B2 Incorrect Drive A type - run SETUP	Type of floppy drive A: not correctly identified in Setup.
02B3 Incorrect Drive B type - run SETUP	Type of floppy drive B: not correctly identified in Setup.

Error Messages	Corrective Action
02D0 System cache error - Cache disabled	RAM cache failed and BIOS disabled the cache. On older boards, check the cache jumpers. You may have to replace the cache. See your dealer. A disabled cache slows system performance considerably.
02F0: CPU ID:	CPU socket number for Multi-Processor error.
02F4: EISA CMOS not writeable*	ServerBIOS2 test error: Cannot write to EISA CMOS.
02F5: DMA Test Failed*	ServerBIOS2 test error: Cannot write to extended DMA (Direct Memory Access) registers.
02F6: Software NMI Failed*	ServerBIOS2 test error: Cannot generate software NMI (Non-Maskable Interrupt).
02F7: Fail-Safe Timer NMI Failed*	ServerBIOS2 test error: Fail-Safe Timer takes too long.
<i>device</i> Address Conflict	Address conflict for specified <i>device</i> .
Allocation Error for: <i>device</i>	Run ISA or EISA Configuration Utility to resolve resource conflict for the specified <i>device</i> .
Failing Bits: <i>nnnn</i> *	The hex number <i>nnnn</i> is a map of the bits at the RAM address which failed the memory test. Each 1 (one) in the map indicates a failed bit. See errors 230, 231, or 232 above for offset address of the failure in System, Extended, or Shadow memory.
Invalid System Configuration Data	Problem with NVRAM (CMOS) data.
I/O device IRQ conflict	I/O device IRQ conflict error.
One or more I2O Block Storage Devices were excluded from the Setup Boot Menu	There was not enough room in the IPL table to display all installed I2O block-storage devices.

Error Messages	Corrective Action
Operating system not found	Operating system cannot be located on either drive A: or drive C:. Enter Setup and see if fixed disk and drive A: are properly identified.
Parity Check 1 <i>nnnn</i> *	Parity error found in the system bus. BIOS attempts to locate the address and display it on the screen. If it cannot locate the address, it displays <i>nnnn</i> . Parity is a method for checking errors in binary data. A parity error indicates that some data has been corrupted.
Parity Check 2 <i>nnnn</i> *	Parity error found in the I/O bus. BIOS attempts to locate the address and display it on the screen. If it cannot locate the address, it displays <i>nnnn</i> .
Press <F1> to resume, <F2> to Setup, <F3> for previous	Displayed after any recoverable error message. Press <F1> to start the boot process or <F2> to enter Setup and change the settings. Press <F3> to display the previous screen (usually an initialization error of an Option ROM, i.e., an add-on card). Write down and follow the information shown on the screen.
Run the I2O Configuration Utility	One or more unclaimed block storage devices have the Configuration Request bit set in the LCT. Run an I2O Configuration Utility (e.g. the SAC utility).

If you still encounter problems after going through the corrective measures, please contact your dealer or an authorized service center for assistance. Some problems may be solved using the BIOS Utility.

Requesting service

International Traveler's Warranty (ITW)

Your computer is backed by an International Traveler's Warranty (ITW) that gives you security and peace of mind when traveling. Our worldwide network of service centers are there to give you a helping hand.

An ITW passport comes with your computer. This passport contains all you need to know about the ITW program. A list of available, authorized service centers are in this handy booklet. Read this passport thoroughly.

Always have your ITW passport on hand, especially when you travel to receive the benefits from our support centers. Place your proof-of-purchase in the flap located inside the front cover of the ITW passport.

If the country you are traveling in does not have an Acer-authorized ITW service site, you can still get in contact with our offices worldwide.

There are three ways to access Acer for technical support and information:

- Internet service worldwide, visit <http://www.acersupport.com/>
- Telephone support in the United States and Canada, call 1-800-816-2237
- Technical support numbers in various countries

You can view a list of technical support numbers by following these steps:

- 1** Click on **Start, Settings, Control Panel**.
- 2** Double-click on **System**.
- 3** Click on the **Support Information** button.

Before you call

Please have the following information available when you call Acer for online service, and please be at your computer when you call. With your support, we can reduce the amount of time a call takes and help solve your problems efficiently.

If there are error messages or beeps reported by your computer, write them down as they appear on the screen (or the number and sequence in the case of beeps).

If you haven't registered your notebook computer, you will be required to register during your first call to Acer.

You are required to provide the following information:

Name: _____

Address: _____

Telephone number: _____

Machine and model type: _____

Serial number: _____

Date of purchase: _____

Appendix A

Specifications

This appendix lists the general specifications of your computer.

Microprocessor platform

- Intel® Centrino™ Mobile Technology
 - Intel® Pentium® M Processor with 1 MB level 2 cache
 - Intel® 855GM chipset family
 - Intel® PRO/wireless network connection

Memory

- Main memory expandable to 2 GB
- Dual 200-pin soDIMM sockets supporting PC2100 DDR (Double Data Rate) memory running at 266 MHz
- 512 KB Flash ROM BIOS

Data storage

- One 9.5mm, high-capacity, Enhanced-IDE hard disk

Display and video

- 10.4" Thin-Film Transistor (TFT) liquid-crystal display (LCD) displaying 24-bit true-color at 1024x768 eXtended Graphics Array (XGA) resolution
- Integrated VGA with DVMT support
- 3D capabilities
- Simultaneous LCD and CRT display support
- Dual display capability
- Tablet mode for LCD panel (Rotatable display)

Audio

- 16-bit AC' 97 PCI stereo audio with built-in wavetable synthesizer
- Built-in speaker and microphone
- Sound Blaster Pro and Windows Sound System-compatible
- Separate audio ports for headphone-out and line-in devices

Keyboard and pointing device

- Acer FineTouch keyboard
- Ergonomically-centered touchpad pointing device with scroll function
- Electromagnetic resonance (EMR) stylus for pen-based input

I/O ports

- Built-in:
 - One type II/I CardBus PC Card slot
 - One RJ-11 phone jack
 - One RJ-45 LAN jack
 - One DC-in jack (AC adapter)
 - One external monitor port
 - One speaker/headphone-out jack
 - One line-in jack
 - One FIR wireless communications port (IrDA-compliant)
 - Two USB 2.0 ports
 - One IEEE 1394 port
 - One EasyPort port replicator connector

Weight and dimensions

- 3.2 lbs (1.40 kg)
- 257 (W) x 216 (D) x 29.7 (H) mm

Environment

- Temperature
 - Operating: 10°C ~ 35°C
 - Non-operating: -20°C ~ 60°C
- Humidity (non-condensing)
 - Operating: 20% ~ 80% RH
 - Non-operating: 20% ~ 80% RH

System

- Microsoft Windows XP Tablet PC Edition
- ACPI support
- DMI 2.0-compliant
- LDCM 6.0 support

Power

- Battery pack
 - 26 WattHour Li-ion main battery pack
 - Smart battery management technology
 - 1.5-hour rapid charge/2.5-hour charge-in-use
- AC adapter
 - 50-Watt
 - Auto sensing 100~240Vac, 50~60Hz

Options

- Memory upgrade modules
- Higher-capacity hard disk drive
- USB optical drive
- USB floppy disk drive
- IEEE 1394 optical drive
- Additional AC adapter
- Additional Li-ion battery pack
- External battery charger
- Full size EMR pen with eraser
- EMR stylus
- Bluetooth/Modem combo module
- 802.11b, 802.11a, or 802.11a/b wireless LAN module
- Acer EasyPort port replicator

Appendix B
Notices

This appendix lists the general notices of your computer.

FCC notice

This device has been tested and found to comply with the limits for a Class B digital device pursuant to Part 15 of the FCC Rules. These limits are designed to provide reasonable protection against harmful interference in a residential installation. This device generates, uses, and can radiate radio frequency energy and, if not installed and used in accordance with the instructions, may cause harmful interference to radio communications.

However, there is no guarantee that interference will not occur in a particular installation. If this device does cause harmful interference to radio or television reception, which can be determined by turning the device off and on, the user is encouraged to try to correct the interference by one or more of the following measures:

- Reorient or relocate the receiving antenna
- Increase the separation between the device and receiver
- Connect the device into an outlet on a circuit different from that to which the receiver is connected
- Consult the dealer or an experienced radio/television technician for help

Notice: Shielded cables

All connections to other computing devices must be made using shielded cables to maintain compliance with FCC regulations.

Notice: Peripheral devices

Only peripherals (input/output devices, terminals, printers, etc.) certified to comply with the Class B limits may be attached to this equipment. Operation with non-certified peripherals is likely to result in interference to radio and TV reception.

Caution

Changes or modifications not expressly approved by the manufacturer could void the user's authority, which is granted by the Federal Communications Commission, to operate this computer.

Use conditions

This part complies with Part 15 of the FCC Rules. Operation is subject to the following two conditions: (1) this device may not cause harmful interference, and (2) this device must accept any interference received, including interference that may cause undesired operation.

Notice: Canadian users

This Class B digital apparatus meets all requirements of the Canadian Interference-Causing Equipment Regulations.

Remarque à l'intention des utilisateurs canadiens

Cet appareil numérique de la classe B respecte toutes les exigences du Règlement sur le matériel brouilleur du Canada.

Modem notices

FCC

This equipment complies with Part 68 of the FCC rules. Located on the bottom side of the modem is a label that contains, among other information, the FCC Registration Number and Ringer Equivalence Number (REN) for this equipment. Upon request, you must provide this information to your telephone company.

If your telephone equipment causes harm to the telephone network, the telephone company may discontinue your service temporarily. If possible, they will notify you in advance. But, if advance notice is not practical, you will be notified as soon as possible. You will also be informed of your right to file a complaint with the FCC.

Your telephone company may make changes in its facilities, equipment, operations, or procedures that could affect the proper functioning of your equipment. If they do, you will be notified in advance to give you an opportunity to maintain uninterrupted telephone service.

If this equipment should fail to operate properly, disconnect the equipment from the phone line to determine if it is causing the problem. If the problem is with the equipment, discontinue use and contact your dealer or vendor.

TBR 21

This equipment has been approved [Council Decision 98/482/EC - "TBR 21"] for pan-European single terminal connection to the Public Switched Telephone Network (PSTN). However, due to differences between the individual PSTNs provided in different countries, the approval does not, of itself, give an unconditional assurance of successful operation on every PSTN termination point. In the event of problems, you should contact your equipment supplier in the first instance.

Important safety instructions

Read these instructions carefully. Save these instructions for future reference.

- 1** Follow all warnings and instructions marked on the product.
- 2** Unplug this product from the wall outlet before cleaning. Do not use liquid cleaners or aerosol cleaners. Use a damp cloth for cleaning.
- 3** Do not use this product near water.
- 4** Do not place this product on an unstable cart, stand, or table. The product may fall, causing serious damage to the product.
- 5** Slots and openings in the cabinet and the back or bottom are provided for ventilation; to ensure reliable operation of the product and to protect it from overheating, these openings must not be blocked or covered. The openings should never be blocked by placing the product on a bed, sofa, rug, or other similar surface. This product should never be placed near or over a radiator or heat register, or in a built-in installation unless proper ventilation is provided.
- 6** This product should be operated from the type of power indicated on the marking label. If you are not sure of the type of power available, consult your dealer or local power company.
- 7** Do not allow anything to rest on the power cord. Do not locate this product where persons will walk on the cord.
- 8** If an extension cord is used with this product, make sure that the total ampere rating of the equipment plugged into the extension cord does not exceed the extension cord ampere rating. Also, make sure that the total rating of all products plugged into the wall outlet does not exceed the fuse rating.
- 9** Never push objects of any kind into this product through cabinet slots as they may touch dangerous voltage points or short out parts that could result in a fire or electric shock. Never spill liquid of any kind on the product.
- 10** Do not attempt to service this product yourself, as opening or removing covers may expose you to dangerous voltage points or other risks. Refer all servicing to qualified service personnel.
- 11** Unplug this product from the wall outlet and refer servicing to qualified service personnel under the following conditions:
 - a** When the power cord or plug is damaged or frayed
 - b** If liquid has been spilled into the product
 - c** If the product has been exposed to rain or water
 - d** If the product does not operate normally when the operating instructions are followed. Adjust only those controls that are covered by the operating instructions since improper adjustment of other

controls may result in damage and will often require extensive work by a qualified technician to restore the product to normal condition.

- e** If the product has been dropped or the cabinet has been damaged
 - f** If the product exhibits a distinct change in performance, indicating a need for service.
- 12** Replace the battery with the same type as the product's battery we recommend. Use of another battery may present a risk of fire or explosion.
- 13** Warning! Batteries may explode if not handled properly. Do not disassemble or dispose of them in fire. Keep them away from children and dispose of used batteries promptly.
- 14** Use only the proper type of power supply cord set (provided in your accessories box) for this unit. It should be a detachable type: UL listed/CSA certified, type SPT-2, rated 7A 125V minimum, VDE approved or its equivalent. Maximum length is 15 feet (4.6 meters).

Regulatory Information

The MPC1-101 Wireless LAN Card must be installed and used in strict accordance with the manufacturer's instructions. This device complies with the following radio frequency and safety standards.

Canada - Industry Canada (IC)

- This device complies with RSS 210 of Industry Canada.

Europe - EU Declaration of Conformity

This device complies with the specifications listed below, following the provisions of the EMC Directive 89/336/EEC:

- ETS 300-826
- ETS 300-328 Technical requirements for Radio equipment.

USA - Federal Communications Commission (FCC)

This device complies with Part 15 of FCC Rules. Operation of the devices in an MPC1-101 Wireless LAN System is subject to the following two conditions:

- This device may not cause harmful interference.
- This device must accept any interference that may cause undesired operation.

Exposure to Radio Frequency Radiation

This transmitter must not be co-located or operating in conjunction with any other antenna or transmitter.

The transmitter and the antenna are permanently installed inside the notebook, and are specific for this model (not for generic computer).

This equipment has been tested and found to comply with the limits for a Class B digital device, pursuant to Part 15 of the FCC Rules. These limits are designed to provide reasonable protection against harmful interference in a residential installation. This equipment generates, uses and can radiate radio frequency energy and, if not installed and used in accordance with the instructions, may cause harmful interference to radio communications. However, there is no guarantee that interference will not occur in a particular installation. If this equipment does cause harmful interference to radio or television reception, which can be determined by turning the equipment off and on, the user is encouraged to try to correct the interference by one of the following measures:

- Reorient or relocate the receiving antenna.
- Increase the separation between the equipment and receiver.
- Connect the equipment into an outlet on a circuit different from that to which the receiver is connected.
- Consult the dealer or an experienced radio/TV technician for help.

FCC Caution: To assure continued compliance, any changes or modifications not expressly approved by the party responsible for compliance could void the user's authority to operate this equipment (example - use only shielded interface cables when connecting to computer or peripheral devices).

This device complies with Part 15 of the FCC Rules. Operation is subject to the following two conditions: (1) This device may not cause harmful interference, and (2) this device must accept any interference received, including interference that may cause undesired operation.

Responsible Party: Acer America Corporation, 2641 Orchard Parkway, San Jose, CA 95134

Telephone No:1-408-432-6200

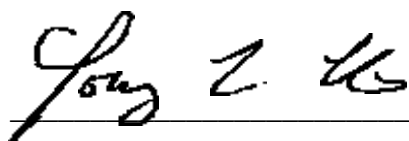


**Federal Communications Commission
Declaration of Conformity**

This device complies with Part 15 of the FCC Rules. The test result has been shown in the ISL test report with number 04LR001FC. Operation is subject to the following two conditions: (1) this device may not cause harmful interference, and (2) this device must accept any interference received, including interference that may cause undesired operation.

The following local Manufacturer /Importer is responsible for this declaration:

Product Name:	Notebook Personal Computer
Model:	MS2133
Name of Responsible Party:	Acer America Corporation
Address of Responsible Party:	2641 Orchard Parkeay, San Jose CA 95134, U. S. A.
Contact Person:	Mr. Young Kim
Phone No.:	408-922-2909
Fax No.:	408-922-2606



Mr. Young Kim / Director, Quality Management
Acer America Corporation
Jan. 13, 2004

Laser compliance statement

The CD drive used with this computer is a laser product. The CD drive's classification label (shown below) is located on the drive.

CLASS 1 LASER PRODUCT

CAUTION: INVISIBLE LASER RADIATION WHEN OPEN. AVOID EXPOSURE TO BEAM.

APPAREIL A LASER DE CLASSE 1 PRODUIT

LASERATTENTION: RADIATION DU FAISCEAU LASER INVISIBLE EN CAS D'OUVERTURE. EVITER TOUTE EXPOSITION AUX RAYONS.

LUOKAN 1 LASERLAITE LASER KLASSE 1

VORSICHT: UNSICHTBARE LASERSTRAHLUNG, WENN ABDECKUNG GEÖFFNET NICHT DEM STRAHL AUSSETZEN

PRODUCTO LÁSER DE LA CLASE I

ADVERTENCIA: RADIACIÓN LÁSER INVISIBLE AL SER ABIERTO. EVITE EXPONERSE A LOS RAYOS.

ADVARSEL: LASERSTRÅLING VEDÅBNING SE IKKE IND I STRÅLEN.

VARO! LAVATTAESSA OLET ALTTINA LASERSÄTEILYLLE.

VARNING: LASERSTRÅLNING NÅR DENNA DEL ÄR ÖPPNAD ÄLÅ TUIJOTA SÄTEESEENSTIRRA EJ IN I STRÅLEN

VARNING: LASERSTRÅLNING NAR DENNA DEL ÄR ÖPPNADSTIRRA EJ IN I STRÅLEN

ADVARSEL: LASERSTRÅLING NAR DEKSEL ÅPNESSTIRR IKKE INN I STRÅLEN

Lithium battery statement

CAUTION

Danger of explosion if battery is incorrectly replaced. Replace only with the same or equivalent type recommended by the manufacturer. Dispose of used batteries according to local regulations. Recycle if at all possible.

ADVARSEL!

Lithiumbatteri - Eksplosjonsfare ved feilagtig håndtering. Udsiftning må kun ske med batteri af samme fabrikat og type. Léver det brugte batteri tilbage til leverandøren.

ADVARSEL

Eksplosjonsfare ved feilaktig skifte av batteri. Benytt samme batteritype eller en tilsvarende type anbefalt av apparatfabrikanten. Brukte batterier kasseres i henhold til fabrikantens instruksjoner.

VARNING

Explosionsfara vid felaktigt batteribyte. Använd samma batterityp eller en ekvivalent typ som rekommenderas av apparattillverkaren. Kasserera använt batteri enligt fabrikantens instruktion.

VAROITUS

Päristo voi räjähtää, jos se on virheellisesti asennettu. Vaihda paristo ainoastaan laitevalmistajan suosittelemaan tyyppiin. Hävitä käytetty paristo valmistajan ohjeiden mukaisesti.

VORSICHT!

Explosionsgefahr bei unsachgemäßen Austausch der Batterie Ersatz nur durch denselben oder einem vom Hersteller empfohlenem ähnlichen Typ. Entsorgung gebrauchter Batterien nach Angaben des Herstellers.

Year 2000 compliance statement

The TravelMate C110 series notebook computer carries the "Hardware NSTL Tested Year 2000 Compliant" logo, which certifies that this model has been tested by NSTL using the YMark2000 test, and has been found to meet NSTL's standards for Year 2000 hardware compliance.



LCD pixel statement

The LCD unit is produced with high-precision manufacturing techniques. Nevertheless, some pixels may occasionally misfire or appear as black or colored dots. This has no effect on the recorded image and does not constitute a malfunction.

A-Tick notice

For safety reasons, only connect headsets with a telecommunications compliance label. This includes customer equipment previously labelled permitted or certified.

The unit shall be connected to Telecommunication Network through a line cord which meets the requirements of ACA Technical Standard TS008.

Australian approved mains cord set shall be used with the equipment.

Index

A

- AC adapter
 - caring for viii
- audio 29
 - adjusting the volume 29
 - troubleshooting 56

B

- battery pack
 - caring for ix
 - charging indicator 18
- BIOS utility 52
- brightness
 - hotkeys 23

C

- caps lock 19
 - on indicator 18
- care
 - AC adapter viii
 - battery pack ix
 - computer viii
- cleaning
 - computer ix
- computer
 - bringing to meetings 32
 - caring for viii
 - cleaning ix
 - disconnecting 31
 - features 3, 16
 - indicators 18
 - keyboards 19
 - moving around 31
 - on indicator 18
 - performance 16
 - security 36
 - setting up a home office 33
 - taking home 32
 - traveling internationally 34
 - traveling on local trips 34
 - troubleshooting 54
 - turning off viii
 - Wireless Communication indicator 18

- Configuring tablet mode buttons 5
- connections
 - network 44
- contrast
 - hotkeys 23

D

- display
 - hotkeys 22
 - troubleshooting 55, 56

E

- email checking function 25
- error messages 59
- Euro 23

F

- FAQ 55
- front view 3

H

- hard disk 28
- help
 - online services 63
- Hibernation mode
 - hotkey 22
- hotkeys 21

I

- indicator lights 18
- infrared 45
 - troubleshooting 56
- ITW. See warranty

K

- keyboard 19
 - embedded numeric keypad 20
 - hotkeys 21
 - lock keys 19
 - troubleshooting 56
 - Windows keys 21

L

- LEDs 18

M

- media access
 - on indicator 18
- memory
 - installing 49– 50

- upgrading 49
- messages
 - error 59
- modem 43

N

- network 44
- Notebook Manager 50
 - hotkey 22
- notice
 - year 2000 compliance 81
- num lock 19
 - on indicator 18
- numeric keypad
 - embedded 20
 - num lock 20

O

- online services 63
- options
 - memory upgrade 49

P

- password 36
 - types 36
- PC Card 47
 - ejecting 47
 - inserting 47
- ports 43
- POST (power-on self-test) 52
- problems
 - display 55, 56
 - infrared 56
 - keyboard 56
 - startup 55
 - troubleshooting 54

Q

- questions
 - setting location for modem use 57

R

- Rotating the display in tablet mode 4

S

- safety
 - CD-ROM 80
 - FCC notice 73

- general instructions 75
- lithium battery 80
- modem notices 74
- scroll lock 19
- security
 - keylock 36
 - passwords 36
 - smart card 36
- service
 - when to call ix
- speakers
 - hotkey 22
 - troubleshooting 56
- specifications 66
- Standby mode
 - hotkey 22
 - status indicator 18
- status indicators 18
- storage 28
 - hard disk 28
- support
 - information 63

T

- Tablet mode button
 - enter button 4
 - function key button 5
 - page down button 4
 - page up button 4
 - windows security button 5
- touchpad 26
 - hotkey 22
 - using 26– 27
- travel
 - international flights 34
 - local trips 34
- troubleshooting 54
 - tips 58

U

- universal serial bus (USB) 45
- Using computer in tablet mode 10

V

- view
 - front 6
 - left 6
 - rear 8
 - right 7

volume
adjusting 29

W
warranty

International Traveler's Warrant-
ty 63
Windows keys 21

