
Wireless Charger LED:

Status	White	Red
Mobile charge	Flashing	
Complete	Steady	
Abnormal		Steady

Diode du chargeur sans fil :

Statut	Blanc	Rouge
Charge mobile	Clignotement	
Terminé	Fixe	
Anormal		Fixe

LED für drahtlose Aufladung:

Status	Weiß	Rot
Mobilgerät Aufladung	Blinkt	
Fertig	Leuchtet	
Abnormal		Leuchtet

LED caricatore wireless:

Stato	Bianco	Rosso
Carica mobile	Lampeggiante	
Completa	Acceso	
Anormale		Acceso

LED del cargador inalámbrico:

Estado	Blanco	Rojo
Carga del móvil	Parpadeante	
Completado	Fijo	
Anómalo		Fijo

LED do Carregador Sem fios:

Estado	Branco	Vermelho
Carregamento móvel	A piscar	
Concluído	Estável	
Anormal		Estável

Индикатор беспроводного зарядного устройства:

Состояние	Белый	Красный
Мобильное устройство заряжается	Мигает	
Полный	Светится непрерывно	
Не в норме		Светится непрерывно

無線充電器 LED :

狀態	白色	紅色
行動充電	閃爍	
完成	穩定	
異常		穩定

无线充电器 LED :

状态	白色	红色
移动充电	闪烁	
完成	稳定	
异常		稳定

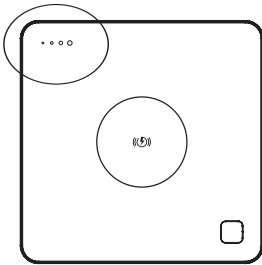
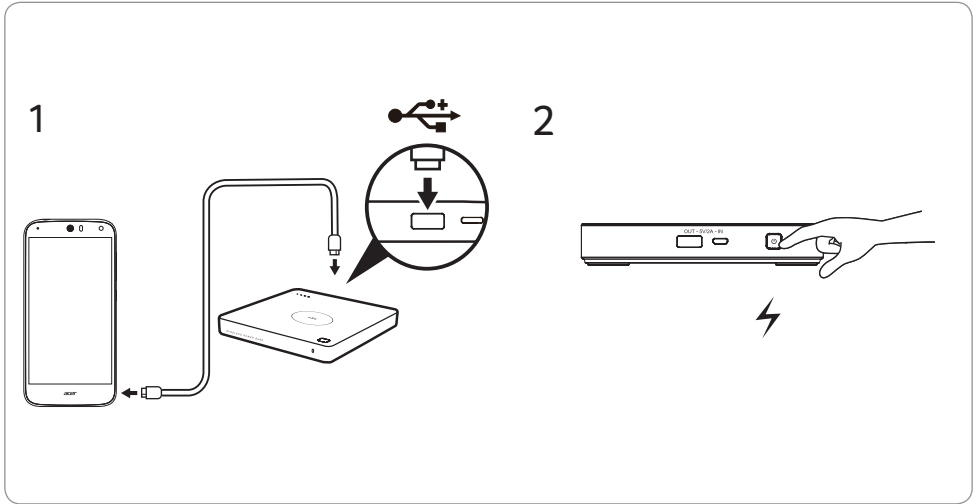
ワイヤレス充電器 LED:

状態	白	赤
モバイル充電	点滅	
完了	点灯	
異常		点灯

무선 충전기 LED:

상태	흰색	빨강
모바일 충전	깜박임	
완료	켜짐 유지	
비정상		켜짐 유지





Power Bank LED:

Status	Amber
Charge	Flashing
Complete	Steady
Discharge	Steady

Diode du PowerBank :

Statut	Ambre
Charge	Clignotement
Terminé	Fixe
Décharge	Fixe

Powerbank LED:

Status	Gelb
Aufladen	Blinkt
Fertig	Leuchtet
Entladen	Leuchtet

LED banco alimentazione:

Stato	Ambra
Carica	Lampeggiante
Completa	Acceso
Scarico	Acceso

LED del acumulador de carga:

Estado	Ámbar
Carga	Parpadeante
Completado	Fijo
Descarga	Fijo

LED da bateria:

Estado	Âmbar
Carregar	A piscar
Concluído	Estável
Descarga	Estável

Индикатор внешнего аккумулятора:

Состояние	Желтый
Зарядка	Мигает
Полный	Светится непрерывно
Разряжается	Светится непрерывно

行動電源 LED :

狀態	琥珀色
充電	閃爍
完成	穩定
放電	穩定

移动电源 LED:

状态	琥珀色
充电	闪烁
完成	稳定
放电	稳定

Power Bank LED:

状态	琥珀色
充電	点滅
完了	点灯
放電	点灯

파워뱅크 LED:

상태	황색
충전	깜박임
완료	켜짐 유지
방전	켜짐 유지

Information for your safety and comfort

Safety instructions

Read these instructions carefully. Keep this document for future reference. Follow all warnings and instructions marked on the product.

Warnings

- Do not use this product near water.
- Do not place this product on an unstable cart, stand or table. If the product falls, it could be seriously damaged.
- Slots and openings are provided for ventilation to ensure reliable operation of the product and to protect it from overheating. These openings must not be blocked or covered. The openings should never be blocked by placing the product on a bed, sofa, rug or other similar surface. This product should never be placed near or over a radiator or heat register, or in a built-in installation unless proper ventilation is provided.
- Never push objects of any kind into this product through cabinet slots as they may touch dangerous voltage points or short-out parts that could result in a fire or electric shock. Never spill liquid of any kind onto or into the product.
- To avoid damage of internal components and to prevent battery leakage, do not place the product on a vibrating surface.
- Your device and its enhancements may contain small parts. Keep them out of the reach of small children.

Guidelines for safe battery usage

This power bank uses a Lithium-ion battery. Do not use it in a humid, wet or corrosive environment. Do not put, store or leave your product in or near a heat source, in a high temperature location, in strong direct sunlight, in a microwave oven or in a pressurized container, and do not expose it to temperatures over 60°C (140°F). Failure to follow these guidelines may cause the battery to leak acid, become hot, explode or ignite and cause injury and/or damage. Do not pierce, open or disassemble the battery. If the battery leaks and you come into contact with the leaked fluids, rinse thoroughly with water and seek medical attention immediately. For safety reasons, and to prolong the lifetime of the battery, charging will not occur at temperatures below 0°C (32°F) or above 40°C (104°F).

Disposal instructions

Do not throw this electronic device into the trash when discarding. To minimize pollution and ensure utmost protection of the global environment, please recycle. For more information on the Waste from Electrical and Electronics Equipment (WEEE) regulations, visit <http://www.acer-group.com/public/Sustainability/sustainability01.htm>



Regulations and safety notices

FCC statement

This device has been tested and found to comply with the limits for a Class B digital device pursuant to Part 15 of the FCC rules. These limits are designed to provide reasonable protection against harmful interference in a residential installation. This device generates, uses, and can radiate radio frequency energy and, if not installed and used in accordance with the instructions, may cause harmful interference to radio communications.

However, there is no guarantee that interference will not occur in a particular installation. If this device does cause harmful interference to radio or television reception, which can be determined by turning the device off and on, the user is encouraged to try to correct the interference by one or more of the following measures:

- Reorient or relocate the receiving antenna.
- Increase the separation between the device and receiver.
- Connect the device into an outlet on a circuit different from that to which the receiver is connected.
- Consult the dealer or an experienced radio/television technician for help.

Caution

Changes or modifications not expressly approved by the manufacturer could void the user's authority, which is granted by the Federal Communications Commission, to operate this computer.

Operation conditions

This device complies with Part 15 of the FCC Rules. Operation is subject to the following two conditions:

- (1) this device may not cause harmful interference, and
- (2) this device must accept any interference received, including interference that may cause undesired operation.

Canada — Industry Canada (IC)

This device complies with RSS216 of Industry Canada.

Cet appareil se conforme à RSS216 de Canada d'Industrie.

Declaration of Conformity for EU countries

Hereby, Acer, declares that this power bank is in compliance with the essential requirements and other relevant provisions of Directive 2014/53/EU

Radio transmitters information as below:

Frequency band: 110-205 KHz

Maximum frequency output power: 5W

警告及安全注意事項

- 請勿讓本裝置短路。為了避免短路，請將本裝置遠離任何金屬物體（如髮夾與鑰匙）。
 - 本裝置在使用期間會發熱，此屬正常現象。請小心握持。
 - 依指示使用本裝置，以免觸電；請勿拆卸。
 - 請勿將本機加熱或丟入火焰中。
 - 請勿將本機置放在重物底下。
 - 請勿讓本機直接曝曬日光或碰水。
 - 將本機遠離高溫、潮濕或灰塵環境。
 - 正常使用下，請將本機放在開放環境中，以利散熱。
 - 本機的接觸表面必須保持清潔。
 - 保持 USB 輸出埠和 micro-USB 輸入埠清潔並且不受阻礙。
 - 請確認被充電裝置符合標準的USB規範並以本產品所附的USB充電傳輸線或原廠提供之傳輸線進行充電。
 - 首次使用本產品時，請先將本產品充滿電。
 - 使用時產生異常發熱或異臭等情況，請立即中止使用，以免因繼續使用，而造成事故發生。
 - 本產品可同時充放電。
 - 本產品操作溫度35°C。
- 若未遵守這些指示，可能會導致設備損壞。

NCC警語:

本產品符合低功率電波輻射性電機管理辦法：第十二條經形式認證合格之低功率射頻電機，非經許可，公司、商號或使用者均不得擅自變更頻率、加大功率或變更原設計之特性及功能。第十四條低功率射頻電機之使用不得影響飛航安全及干擾合法通信；經發現有干擾現象時，應立即停用，並改善至無干擾時方得繼續使用。前項合法通信，指依電信規定作業之無線電信。低功率射頻電機須忍受合法通信或工業、科學及醫療用電波輻射性電機設備之干擾。



Acer Incorporated
8F, 88, Sec. 1, Xintai 5th Rd., Xizhi
New Taipei City 221, Taiwan

Declaration of Conformity

We,

Acer Incorporated

8F, 88, Sec. 1, Xintai 5th Rd., Xizhi, New Taipei City 221, Taiwan

And,

Acer Italy s.r.l.

Viale De Gasperi 88/A, 20017 Mazzo di Rho (MI) Italy

Tel: +39-02-939-921 ,Fax: +39-02 9399-2913

www.acer.it

Product: Acer Wireless Power Bank
Trade Name: Acer
Model Number: WPB1
SKU Number: WPB1xxxxxx ("x"=0~9, a~z, A~Z or Blank)

We, Acer Incorporated, hereby declare under our sole responsibility that the product described above is in conformity with the relevant Union harmonization legislations as below Directive and following harmonized standards and/or other relevant standards have been applied:

<input type="checkbox"/> EMC Directive: 2014/30/EU		
<input type="checkbox"/> EN 55022:2010+AC:2011, Class B	<input type="checkbox"/> EN 61000-3-2:2006+A2:2009	
<input type="checkbox"/> EN 55024:2010	<input type="checkbox"/> EN 61000-3-3:2013	
<input checked="" type="checkbox"/> R&TTE Directive: 1999/5/EC (until June 12, 2017)		
<input checked="" type="checkbox"/> RED Directive: 2014/53/EU (From June 13, 2017)		
<input type="checkbox"/> EN 300 328 V1.8.1	<input type="checkbox"/> EN 302 291-2 V1.1.1	<input type="checkbox"/> EN 301 489-7 V1.3.1
<input type="checkbox"/> EN 301 893 V1.7.1	<input type="checkbox"/> EN 301 511 V9.0.2	<input type="checkbox"/> EN 301 489-17 V2.2.1
<input checked="" type="checkbox"/> EN 300 330-1 V1.8.1	<input type="checkbox"/> EN 301 908-1 V6.2.1	<input type="checkbox"/> EN 301 489-24 V1.5.1
<input checked="" type="checkbox"/> EN 300 330-2 V1.5.1	<input type="checkbox"/> EN 301 908-2 V6.2.1	<input type="checkbox"/> EN 50360:2001
<input type="checkbox"/> EN 300 440-1 V1.6.1	<input type="checkbox"/> EN 301 908-13 V6.2.1	<input type="checkbox"/> EN 50566:2013
<input type="checkbox"/> EN 300 440-2 V1.4.1	<input checked="" type="checkbox"/> EN 301 489-1 V1.9.2	<input type="checkbox"/> EN 62479:2010
<input type="checkbox"/> EN 302 291-1 V1.1.1	<input checked="" type="checkbox"/> EN 301 489-3 V1.6.1	<input checked="" type="checkbox"/> EN 62311:2008
		<input type="checkbox"/> EN 62209-1:2006
		<input type="checkbox"/> EN 62209-2:2010
<input checked="" type="checkbox"/> LVD Directive: 2014/35/EU		
<input type="checkbox"/> EN 60950-1:2006/A11:2009/A1:2010/A12:2011/A2:2013		
<input checked="" type="checkbox"/> EN 62133:2013		
<input type="checkbox"/> EN 50332-1:2000	<input type="checkbox"/> EN 50332-2:2003	
<input checked="" type="checkbox"/> RoHS Directive: 2011/65/EU		
<input checked="" type="checkbox"/> EN 50581:2012		
<input type="checkbox"/> ErP Directive: 2009/125/EC		
<input type="checkbox"/> Regulation (EU) No. 617/ 2013	<input type="checkbox"/> Regulation (EC) No. 278/2009; EN 50563:2011	
<input type="checkbox"/> Regulation (EC) No. 1275/2008; EN 50564:2011		

Year to begin affixing CE marking 2016.

RU Jan / Sr. Manager
Acer Incorporated (Taipei, Taiwan)

Apr. 20, 2016
Date