



# Itron (Sprague/Actaris) Gas Meter

## MTU Installation Instructions (Y20972-TUM Rev A)

### FCC/ISED Compliance

This product/device has been tested and certified to be in compliance with all appropriate requirements of both the FCC and ISED.

Any changes or modification to this product/device, or the use of any antenna other than the one provided by or authorized with expressed written approval by Aclara Technologies LLC may void the user's authority to operate this product/device.

This product/device and/or its antenna must be fixed-mounted on indoor or outdoor permanent structure(s) providing a separation distance of at least 20 cm from all persons during normal operation. This device is not designed (and it has no external connection) to operate in conjunction with any other antennas or transmitters. No other operating instructions for satisfying RF exposure compliance are needed.

This product/device has been tested and calibrated at the factory. It has no user adjustable controls and can only be adjusted by authorized, trained personnel.

#### French translation:

Conformité FCC/ISDE

Cet équipement a été testé et il est conforme à toutes les exigences appropriées de la FCC et de l'ISDE.

Tout changement ou toute modification à cet appareil, ou l'emploi de n'importe quelle antenne autre que celle fournie par ou autorisée sous l'accord exprès donné par écrit d'Aclara Technologies LLC peut annuler l'autorisation d'utiliser de cet appareil.

Cet appareil ainsi que son antenne doivent être montés de manière fixe sur des structures intérieures ou extérieures permanentes en conférant une distance d'au moins 20 cm des personnes pendant le fonctionnement normal. Cet appareil n'est pas conçu (et il n'a aucun branchement externe) pour être utilisé en association avec toute autre antenne ou tout émetteur. Aucune autre instruction d'utilisation n'est requise pour assurer la conformité aux règles d'exposition aux RF.

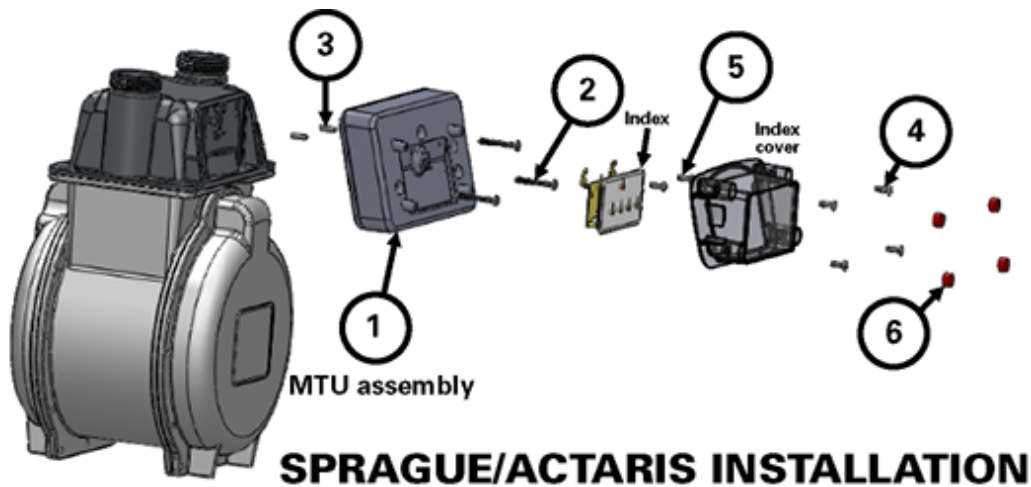
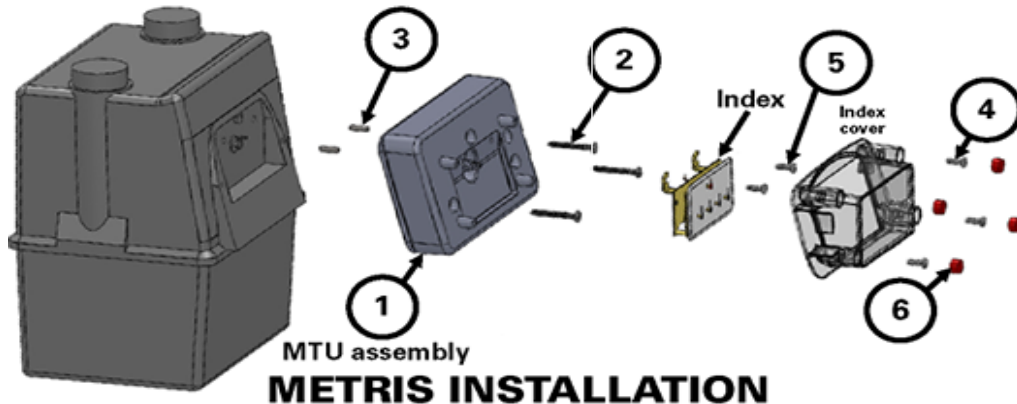
Cet appareil a été soumis à des tests et calibré en usine. Il n'a pas de contrôle d'ajustement et ne peut être ajusté que par un personnel autorisé et qualifié.

The information contained in this document is private to Aclara Technologies LLC an Ohio liability company (Aclara). This information may not be published, reproduced, or otherwise disseminated without the express written authorization of Aclara. Any software or firmware described in this document is furnished under a license and may be used or copied only in accordance with the terms of such license. The information in this document is subject to change without notice and should not be construed as a commitment by Aclara. Aclara assumes no responsibility for any errors that may appear in this document. No responsibility is assumed for the use or reliability of software on equipment that is not supplied by Aclara. STAR is a registered trademark of Aclara Technologies LLC.

## Purpose & Scope

These instructions provide a procedure for installing a STAR direct-mount MTU on the Sprague 175, 240, 250, 400, Metris 250, and 400A Itron Gas Meters. This installation instruction covers the Aclara Catalog number 3551-031-RBS2W/3551-031-RBS2. (The images in this document are for reference only.)

## Parts Required



Item #	Item Description	Qty
1	Series 3500 Direct Mount MTU	1
2	#10-24 X 1.5" Stainless steel screw	3
3	#10-24 X 5/8" Stainless steel set screw	2
4	#10 X 1/2" Stainless steel screw	4
5	#10-16 X 1/2" Stainless steel screw	2
6	Security seal	4

### NOTE

The mounting kit contains the exact quantity of hardware required for a single installation. Keep extra hardware on hand.

### NOTE

No repair or maintenance of MTU is required. Defective MTU will be replaced.

### NOTE

MTU may be wiped with damp cloth to prevent electrostatic charge hazard.

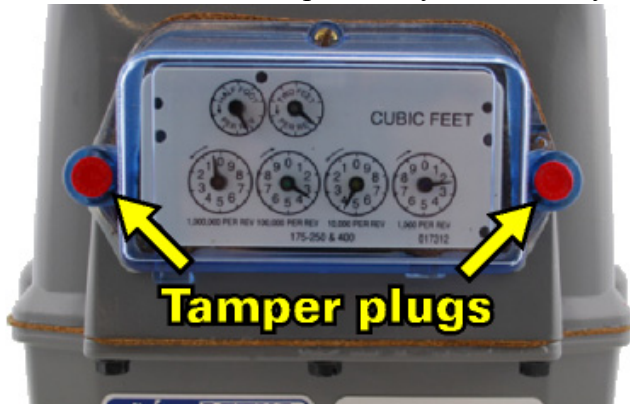
## Tools Required

To mount the MTU to these meters, you will need the following tools and equipment:

- Phillips screwdriver
- Slotted screwdriver
- Torque-limiting screwdriver
- 3/32" hex key wrench
- Safety glasses

## Remove Index

1. Remove all anti-tamper, safety, and security hardware from the clear index cover.



2. Remove the existing clear index cover by removing the three screws securing it to the meter. Discard the screws and the cover.



**NOTE:** If more than one screw is broken, DO NOT install the MTU.

3. Remove the index by removing the two screws securing it to the meter. Discard the screws.

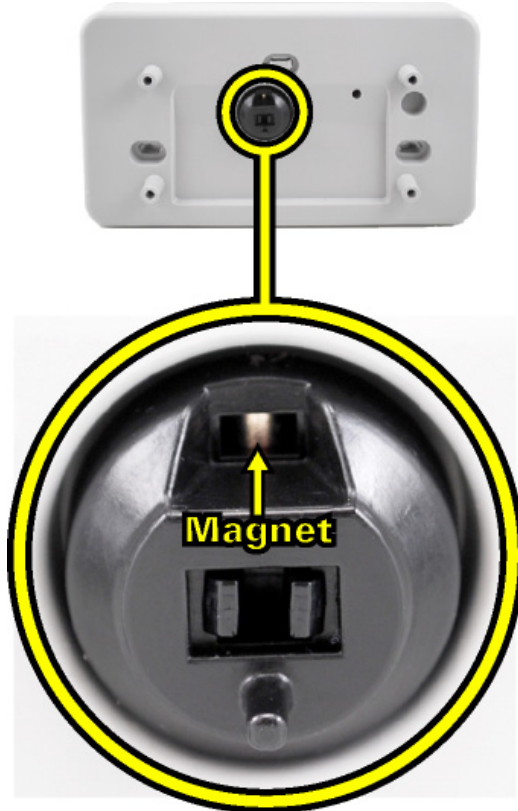


**NOTE:** If either of the screws break during removal, DO NOT install the MTU.

4. Remove the gasket and any adhesive residue on the meter.

### Mount Index to MTU

1. Ensure that the coupler is properly engaged with the gear shaft and that the magnet is present.



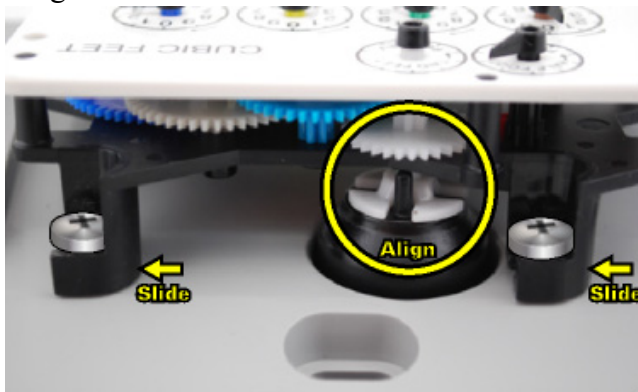
2. Verify that the pre-applied gasket is properly adhered to the back of the MTU.



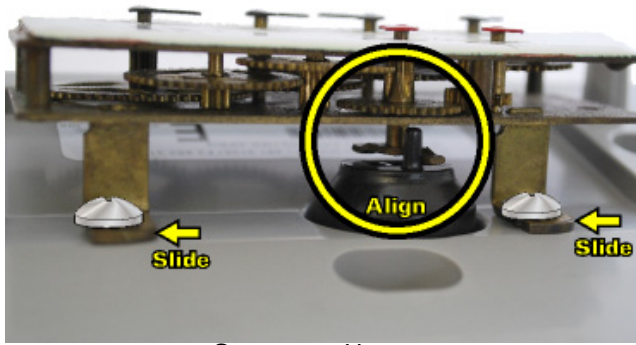
3. Mount the index onto the MTU by starting two #10-16 x 1/2" stainless steel screws into the two holes on the front of the MTU.



4. Slide the index beneath the heads of both screws and align the MTU coupler pin to the index dial gear.

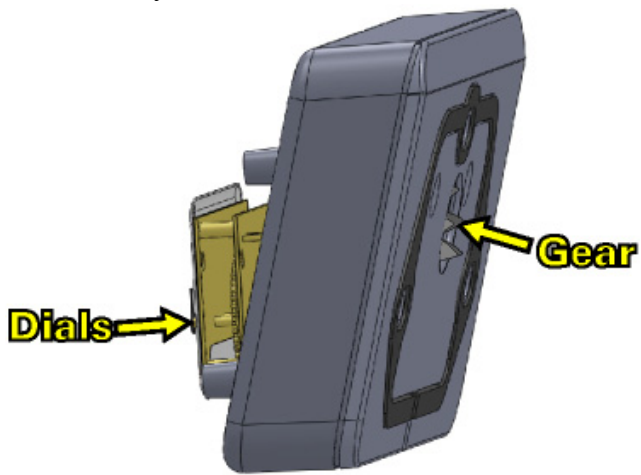


Metris Meter



**Sprague Meter**

5. Tighten both screws to 10-12 inch-pounds.
6. Rotate the gear on the back of the MTU in both directions, and verify that the index dials turn smoothly.

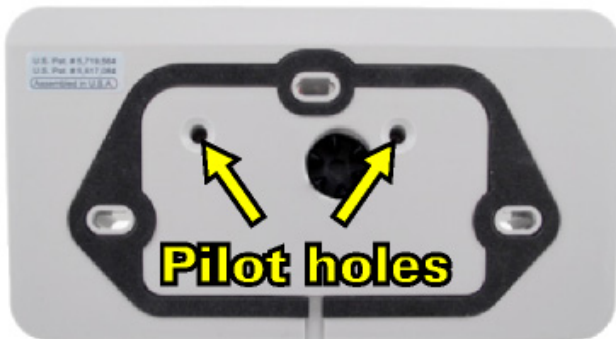


## Mount MTU Assembly to Meter

1. Thread the two #10-24 x 5/8" alignment screws two turns into the holes in the meter.



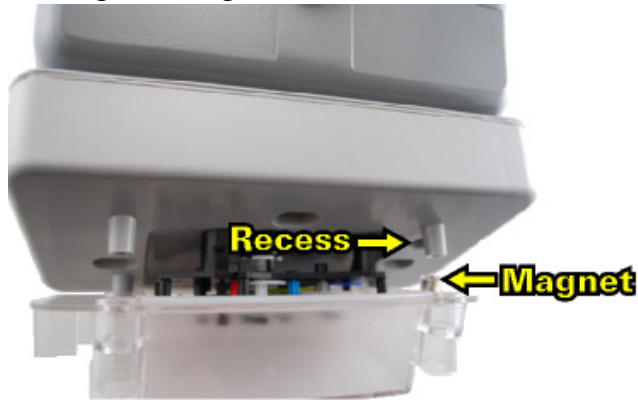
2. Position the pilot holes on the back of the MTU over the alignment screws.



3. Secure the MTU/index assembly to the meter using the three #10-24 x 1.5" screws. Tighten to 10-12 inch-pounds.



4. Align the magnet in the new index cover to the recess in the MTU.



5. Secure the cover to the MTU using the four remaining #10 x 1/2" screws. Tighten each screw to 10-12 inch pounds.



6. Install the four anti-tamper plugs in the index cover screw towers.



### Putting the Device into Service

Program the MTU using the STAR Programmer

To take the device out of service, follow the steps in the STAR Programmer in reverse order.

### MTU ID Label Examples





**NOTE**

Specific Conditions of use in hazardous locations indicated on label.

**List of Standards**

1. ANSI/ISA 12.12.01
2. CSA 22.2

**NOTE**

Training can be provided by Aclara or Aclara can train and certify third party installers. Installers may be anyone certified by Aclara.

