



Elster / AMCO Gas Meter MTU Installation Instructions (Y20969-TUM Rev A)

FCC/ISED Compliance

This product/device has been tested and certified to be in compliance with all appropriate requirements of both the FCC and ISED.

Any changes or modification to this product/device, or the use of any antenna other than the one provided by or authorized with expressed written approval by Aclara Technologies LLC may void the user's authority to operate this product/device.

This product/device and/or its antenna must be fixed-mounted on indoor or outdoor permanent structure(s) providing a separation distance of at least 20 cm from all persons during normal operation. This device is not designed (and it has no external connection) to operate in conjunction with any other antennas or transmitters. No other operating instructions for satisfying RF exposure compliance are needed.

This product/device has been tested and calibrated at the factory. It has no user adjustable controls and can only be adjusted by authorized, trained personnel.

French translation

Conformité FCC/ISDE

Cet équipement a été testé et il est conforme à toutes les exigences appropriées de la FCC et de l'ISDE.

Tout changement ou toute modification à cet appareil, ou l'emploi de n'importe quelle antenne autre que celle fournie par ou autorisée sous l'accord exprès donné par écrit d'Aclara Technologies LLC peut annuler l'autorisation d'utiliser de cet appareil.

Cet appareil ainsi que son antenne doivent être montés de manière fixe sur des structures intérieures ou extérieures permanentes en conférant une distance d'au moins 20 cm des personnes pendant le fonctionnement normal. Cet appareil n'est pas conçu (et il n'a aucun branchement externe) pour être utilisé en association avec toute autre antenne ou tout émetteur. Aucune autre instruction d'utilisation n'est requise pour assurer la conformité aux règles d'exposition aux RF.

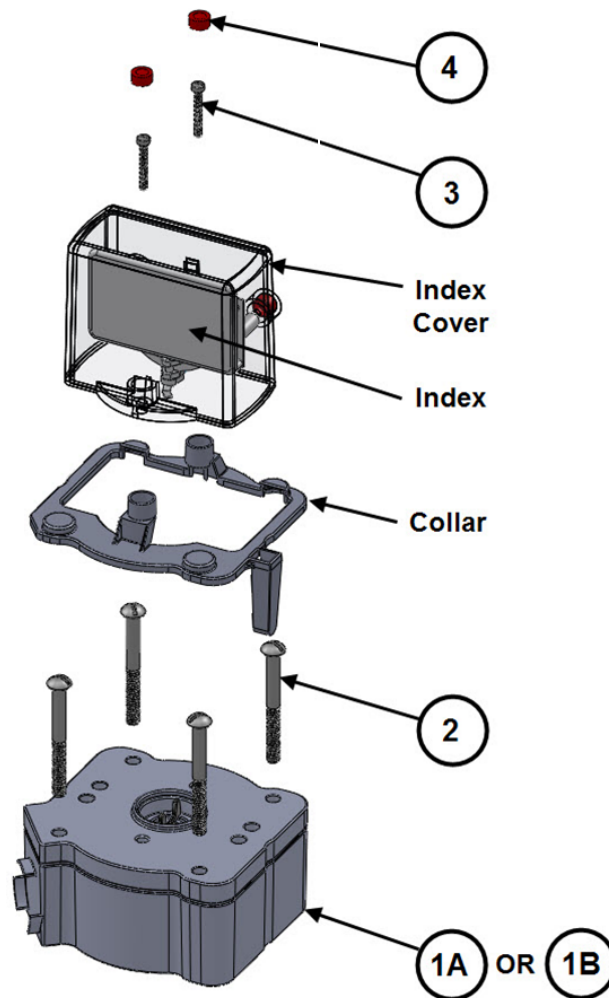
Cet appareil a été soumis à des tests et calibré en usine. Il n'a pas de contrôle d'ajustement et ne peut être ajusté que par un personnel autorisé et qualifié.

This document contains information that is private to Aclara Technologies LLC, an Ohio limited liability company, and/or that is private to Aclara Meters LLC, a Delaware limited liability company (individually or collectively "Aclara"). This information may not be published, reproduced, or otherwise disseminated without the express written authorization of Aclara. Any software or firmware described in this document is furnished under a license and may be used or copied only in accordance with the terms of such license. The information in this document is subject to change without notice and should not be construed as a commitment by Aclara. Aclara assumes no responsibility for any errors that may appear in this document. No responsibility is assumed for the use or reliability of software on equipment that is not supplied by Aclara. Metrum Cellular, STAR, Synergize, and TWACS are registered trademarks of Aclara. 2011-2017. All Rights Reserved. Confidential and proprietary.

Purpose & Scope

This instruction provides a procedure for installing an Aclara STAR MTU on Elster/American Commercial Models: 60B, 80B, AL-800, AL-1000, AL-1400, AL-2300, and AL-5000 Industrial & Commercial Turbine Rotary Gas Meters. This installation instruction covers the Aclara Catalog number 3571-015-RBS2 and 3571-015-RBS2W for these gas meters. (The images in this document are for reference only.)

Parts Required



| # | Item | Qty |
|---|--|-----|
| 1 | MTU, GAS, OD2, DIR, AMCOM, STDRNG OR | 1 |
| 1 | MTU, GAS, OD2, DIR, AMCOM, EXTRNG | 1 |
| 2 | #18-18 X 3 1/8" Screw, SS | 4 |
| 3 | #10-32 X 1" Screw, SS | 2 |
| 4 | Gas MTU security seal | 2 |

NOTE

The mounting kit contains the exact quantity of hardware required for a single installation. Keep extra hardware on hand.

NOTE

No repair or maintenance of MTU is required. Defective MTU will be replaced.

NOTE

MTU may be wiped with damp cloth to prevent electrostatic charge hazard.

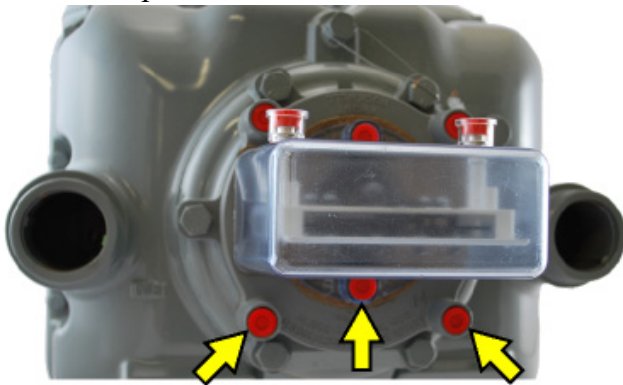
Tools Required

To connect the MTU to these meters, you will need the following tools and equipment:

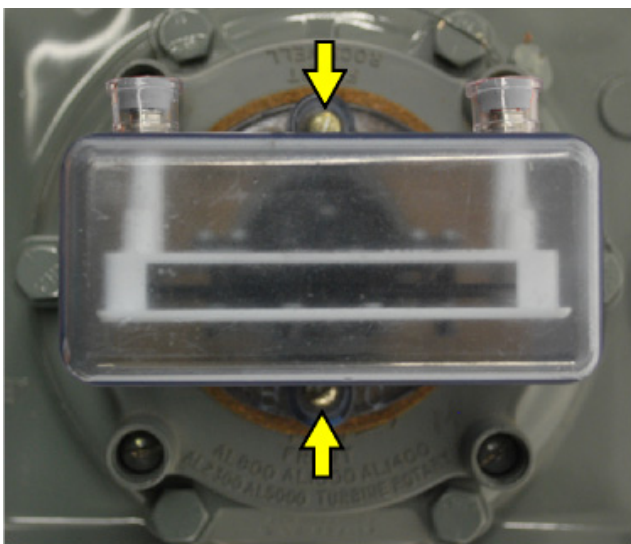
- #2 Phillips screwdriver
- 1/4" Slotted screwdriver
- Torque-limiting screwdriver
- Safety glasses

Remove Index and Baseplate

1. Remove the anti-tamper, safety, and security hardware from the screws attaching the index cover and baseplate to the meter.



2. Remove the index cover and index by removing the two screws securing it to the meter. Discard the screws.



NOTE: If any of the screws are broken, or break during removal, DO NOT install the MTU.

3. Remove and retain the gasket..



NOTE: In addition to the gasket shown, some index covers use a silicone gasket. In this case, ensure that the silicone gasket remains attached to the index cover and is not damaged.

4. Remove the four screws securing the baseplate to the meter. Discard the base plate.



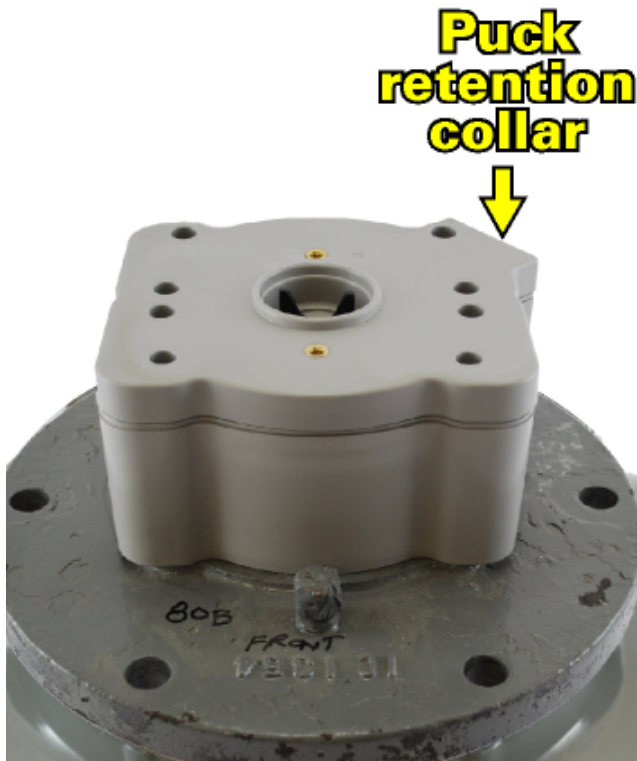
NOTE: If more than two screws are broken, or if two screws are broken and they are not on opposite diagonal sides, the MTU should not be installed.

Mount MTU to Meter

1. Orient the MTU so that the puck retention collar faces the front, left corner of the meter.



NOTE: On some older meters, like the 60B and 80B, the index and MTU are installed 180° so that the puck retention collar faces the right rear corner of the meter as shown below.



2. Align the gear on the bottom of the MTU with the yoke on the meter.



3. Secure the MTU to the meter using the four #18-18 X 3 1/8" screws. Tighten screws to 12-13 inch-pounds.



4. Install the gasket on top of the MTU.

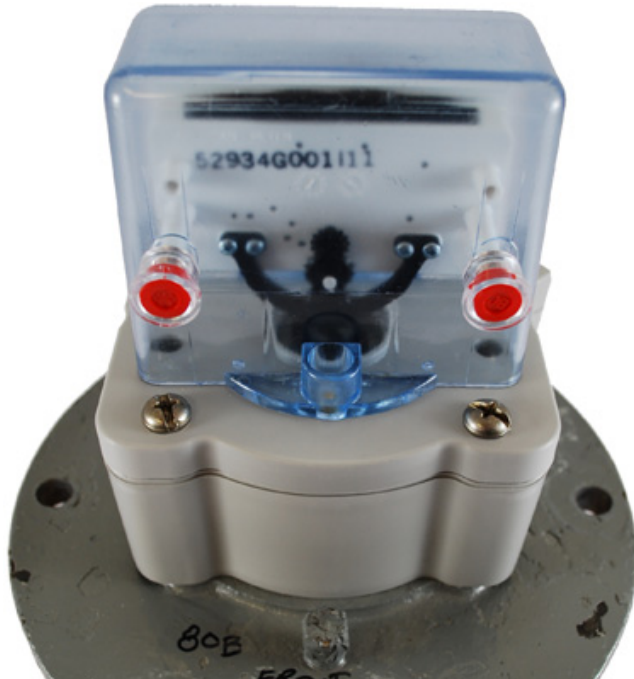


Mount Index to MTU

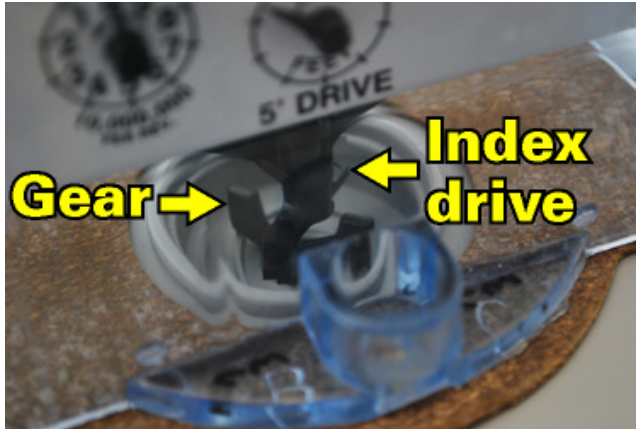
1. Orient the index so that the dials face towards the puck retention collar. On most meters, the dials should face towards the front of the meter.



NOTE: On some older meters, like the 60B and 80B, the index and MTU must be installed so that the dials and puck retention collar face the rear of the meter, as shown.



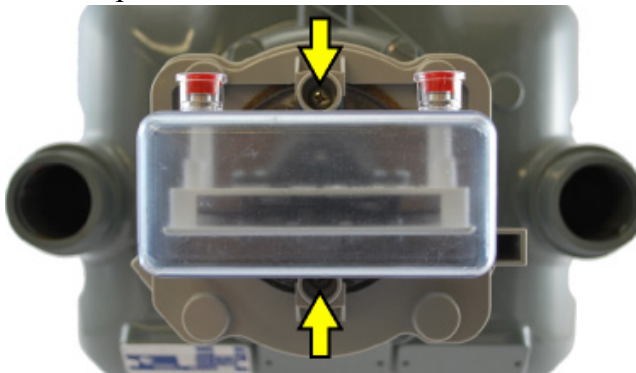
2. Align the index drive with the MTU gear.



3. Position the collar over the index as shown.

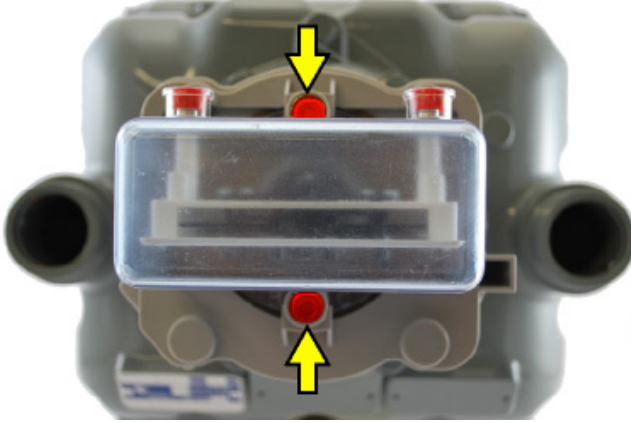


4. Secure the index and collar to the MTU using the #10-32 X 1" screws. Tighten both screws to 2-3 inch-pounds.



CAUTION: Excessive torque may damage the MTU enclosure.

5. Install two anti-tamper plugs in the index cover screw towers as shown.



Putting the Device into Service

Program the MTU using the MTU Programmer software and the Field Programmer.

To take the device out of service, follow the instructions for putting the device into service in reverse order.

MTU ID Label Examples



NOTE

Specific Conditions of use in hazardous locations indicated on label.

List of Standards

1. ANSI/ISA 12.12.01
2. CSA 22.2

NOTE

Training can be provided by Aclara or Aclara can train and certify third party installers. Installers may be anyone certified by Aclara.

