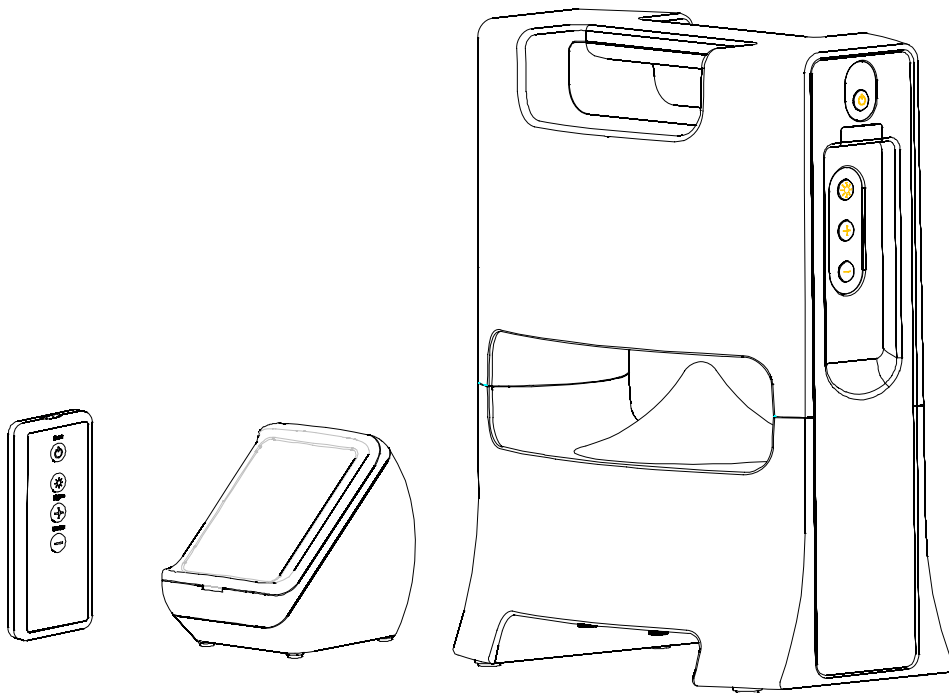


**FRONTGATE®**  
OUTFITTING AMERICA'S FINEST HOMES®

**DS0620B**

**2.4 GHz Wireless Outdoor Speaker System**  
**Item #40325**



**Owner's Manual**

**(Read carefully the instructions before using this system)**

## Introduction

This 2.4GHz digital wireless speaker system utilizes the most advanced wireless technology to deliver dynamic, high-quality audio anywhere inside or outside your home. The wireless audio transmission travels freely through walls, floors and other solid objects. Simply connect the system to any audio source such as Radio, TV, VCR, Hi-Fi and CD/MP3/ VCD/DVD players... to enjoy full-spectrum, lifelike sound without complicated wiring and installation.

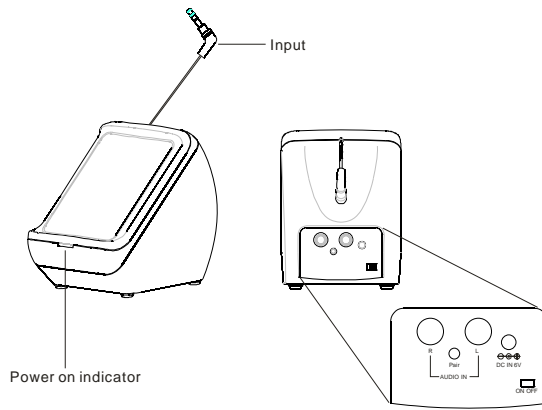
## Features

1. 2.4GHz Frequency Hopping Spread Spectrum (FHSS) digital transmission.
2. 32-Channel scan-tuning between transmitter and receiver.
3. Audio output power up to 20 Watts RMS per channel.
4. Weather-resistant speaker and remote control.
5. Mood light effect.
6. Dual weather-resistant speaker driver (super bass and tweeter built-in).
7. Pairing between transmitter and speaker
8. Supports stereo audio (with optional additional speaker).
9. AUX In jack.
10. Operating distance up to 50 meters in open area (less through walls and other obstructions).
11. Works through walls, floors and anywhere in the room.
12. Virtually interference-free stereo quality.
13. Electronic Volume Control on Speakers.
14. Remote control unit.
15. Powered by 6 D batteries, or by included AC/DC adapter.
16. Portable Transmitter powered by 4 AA batteries, or by included AC/DC adapter

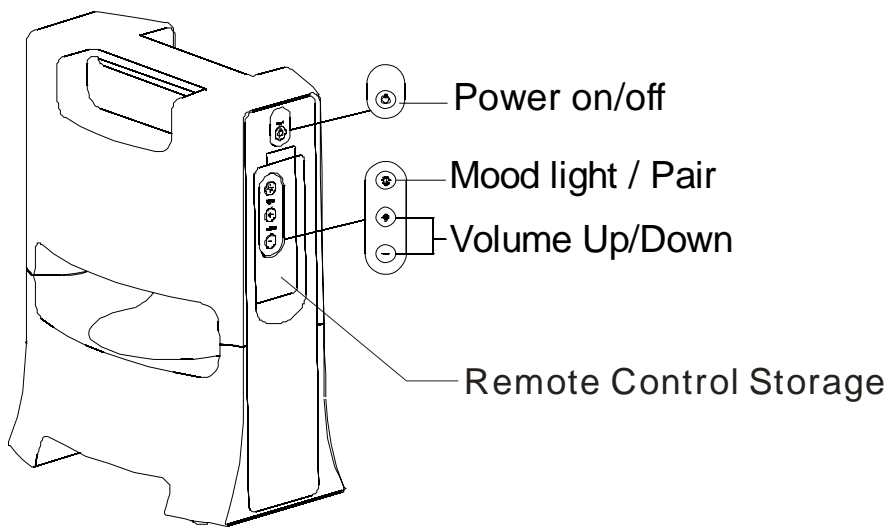
## Package content

- i. 1 x RF transmitter
- ii. 1 x RF speaker
- iii. 1 x Remote control
- iv. 1 x ac/dc adapter for transmitter
- v. 1 x ac/dc adapter for speaker
- vi. 1 x RCA to RCA cable
- vii. 1 x 3.5mm to 6.3 mm adapter plug
- viii. 1 x user manual

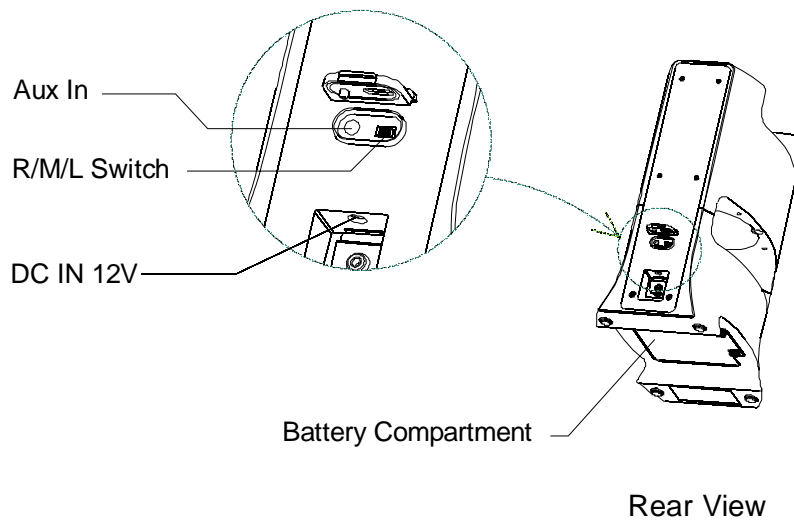
# Transmitter



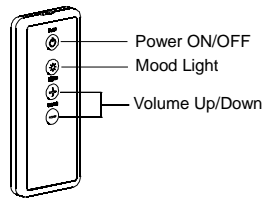
# Speaker



# Front View



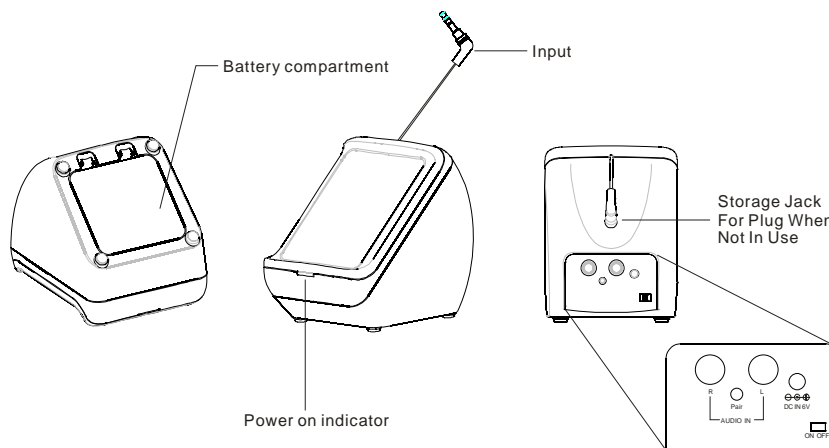
## Remote Control



## Installation

### Transmitter

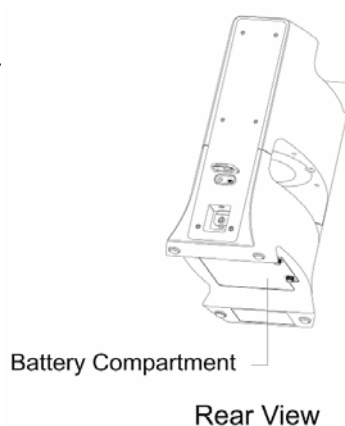
1. Plug the included AC/DC adapter into a standard wall outlet.
2. Insert the adapter connector plug firmly into the DC IN jack located on the rear panel of the transmitter base, OR
3. **Insert 4 AA alkaline battery (not supplied) on the battery compartment and close the battery door.**
4. Extend the retractable audio cable located on the back panel of the transmitter and connect it to the output jack of virtually any audio source.  
**Note :** Do not fully extend the cable until ready to retract.
5. To retract the cable, pull it until it is fully extended and then allow it to feed back into the base.



### Speaker Receiver

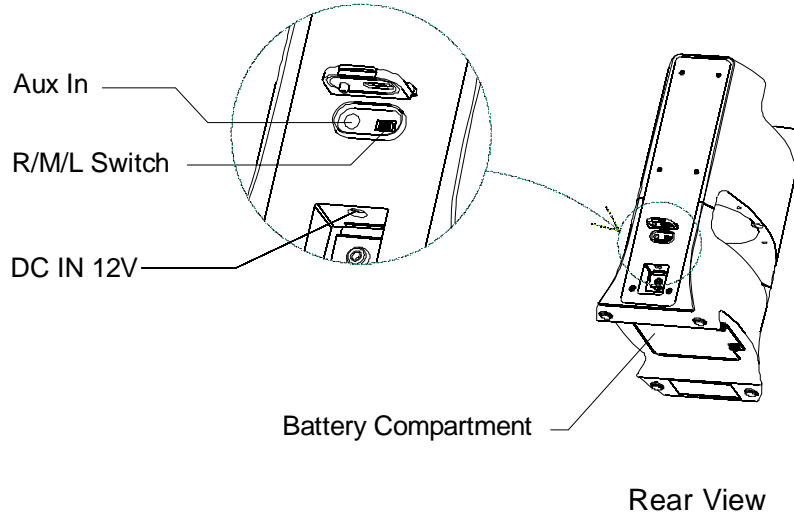
#### Battery Power

1. To operate the speaker using battery power, gently turn the speaker over and open the battery compartment cover located underneath.
2. Insert six (6) D alkaline batteries (not provided) into the battery compartment, observing proper +/- polarities as indicated.
3. Replace the battery compartment cover.



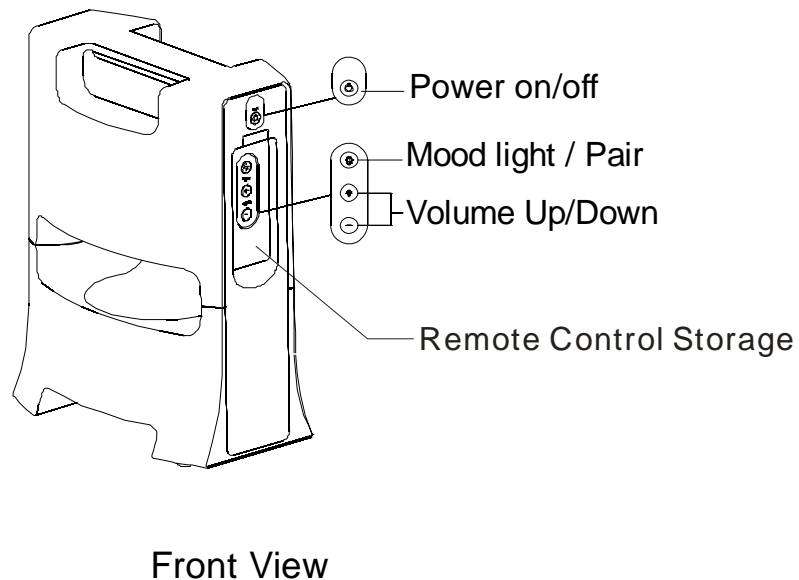
## AC Power

1. To operate the speaker using AC power, plug the included 12V power adapter into a standard wall outlet.
2. Insert the power adapter connector firmly into the DC IN jack located on the back panel of the speaker.



## Operation

1. To switch on the speaker, press the POWER button 3sec. located on the front panel of the speaker. The GREEN power LED illuminates.
2. To switch off the speaker, press the POWER button 3sec again.



## Remote Control

The remote control is ready to use with a factory-installed button cell battery. It can be stored in the recessed area on the front panel.

## Basic Operation

1. When the transmitter power adapter (or battery is inserted) is connected and plugged into a

standard wall outlet, switch the on/off switch to ON. The transmitter's GREEN led will light up.

2. To switch on the speaker, press the POWER button 3sec on the front panel of the speaker. The GREEN led illuminates.
3. Turn on the audio source the transmitter is turned off for less than 4 minutes, the blue LEDs on the transmitter and the speaker illuminate when the audio signal link between the two is made.
4. If the audio source connected to the transmitter is turned off for less than 4 minutes, the BLUE leds on the transmitter and the speaker remain on, but no sound is transmitted. When the audio signal returns to the transmitter, sound is transmitted again.
5. If no signal is detected for more than 4 minutes, the transmitter automatically turns off ; the BLUE leds on the transmitter and the speaker switch to GREEN.
6. If no signal is detected from the transmitter for more than 5 minutes, the speaker automatically shifts to Standby mode.
7. If no audio signal is detected from the transmitter for more than 15 minutes, the speaker automatically turns off. The GREEN led goes off.
8. To switch on the speaker, press the POWER button 3sec on the front panel of the speaker.
9. To switch off the speaker. Press the POWER button 3sec again.

#### **PAIRING**

1. If there is no audio sound is detected after connecting is done, re-pairing processes is required.
2. Press the “PAIR” buttons on both transmitter and speakers Mood light /Pair button for 5 seconds, there will have a “Do” sound detected when the pairing process is finished.

## **Mood Light**

For mood light effect, press the LIGHTS button on the speaker or remote control.

## **Left / Right Channel and Mono Selection**

The Wireless Outdoor Speaker System comes with one speaker and is designed for either Mono or Stereo playback. For stereo playback, an additional speaker must be purchased separately. Mono playback is suggested when only one speaker is used in an area or room.

#### **Mono Playback**

To enable Mono playback, ensure that the switch located on the back panel of the speaker is in the MONO position.

#### **Stereo Playback**

To enable Stereo playback, set the switch on one of the two speakers' back panel to LEFT. Set the switch on the other speaker to RIGHT.

**Note 1 :** It is also possible to listen to only the Left or Right audio channel using only the speaker set. To do so, simply set the switch on the speaker's back panel to LEFT or RIGHT. Only the channel selected will be audible.

**Note 2 :** If two speakers are connected to the system, ensure both speakers are placed within the effective operational range. If either speaker is out of range it will cause distortion to both speakers.

## **AUX In**

To connect an audio device directly to the speaker, insert the output audio cable from the device into the AUX In jack located on the back panel of the speaker.

### **Note :**

- If the source signal is too weak for reception, the transmitter automatically switched off after approximately 4 minutes to protect the unit and save power. If the source signal returns to an adequate level, the transmitter automatically switches back on.
- When the transmitter is in Standby mode, the speaker automatically switches off after approximately 20 minutes to protect the unit and save power.
- To switch speaker power back on during Standby mode, press the POWER button on the remote control. The signal link between the transmitter and speaker reconnects automatically.

## **Troubleshooting**

### **No sound**

- Ensure the AC adapter is securely plugged into the wall outlet and the transmitter DC IN jack.
- Ensure the speaker POWER button is in the ON position.
- Speaker batteries may be too weak. Replace with new batteries or connect with the included ac/dc adapter.
- Ensure the connected audio device is switched on and producing a signal.
- Ensure that the volume level is set to a moderate level.
- Redo the pairing process by pressing the “Pair” button on the speakers and transmitter simultaneously.

### **Distortion**

- Speaker batteries may be too weak, Replace with new batteries or connect with the included ac/dc adapter.
- Ensure that the volume level is set to a moderate level.
- The speakers are too far from the transmitter. Move closer to the transmitter base.
- The audio input signal may be too low : increase the volume level of the audio source.
- If two speakers are connected to the system, ensure both speakers are placed within the effective operational range. If either speaker is out of range it will cause distortion to both speakers.

## Specifications

Transmission Mode :	UHF Stereo
Carrier Frequency :	2.4GHz Digital
Operation Voltage :	Transmitter, DC 6C 300mA Speaker, DC 12V 1.5A or 6 x D alkaline batteries (not included) Remote Control, 1 x CR2032 button cell
Frequency Response :	30 Hz – 20 KHz
Distortion :	0.5%
S/N Ratio :	65 dB
Operation Distance :	Up to 50 meters (open area)
Speaker Audio Output Power :	20W Max. (RMS)

**WARNING** :Changes or modifications to this unit not expressly approved by the party responsible for compliance could void the user's authority to operate the equipment. Operation is subject to the following two conditions: (1) this device may not cause interference, and (2) this device must accept any interference, including interference that may cause undesired operation of the device.

### Federal Communication Commission Interference Statement

This equipment has been tested and found to comply with the limits for a Class B digital device, pursuant to Part 15 of the FCC Rules. These limits are designed to provide reasonable protection against harmful interference in a residential installation. This equipment generates, uses and can radiate radio frequency energy and, if not installed and used in accordance with the instructions, may cause harmful interference to radio communications. However, there is no guarantee that interference will not occur in a particular installation. If this equipment does cause harmful interference to radio or television reception, which can be determined by turning the equipment off and on, the user is encouraged to try to correct the interference by one of the following measures:

- Reorient or relocate the receiving antenna.
- Increase the separation between the equipment and receiver.
- Connect the equipment into an outlet on a circuit different from that to which the receiver is connected.
- Consult the dealer or an experienced radio/TV technician for help.

This device complies with Part 15 of the FCC Rules. Operation is subject to the following two conditions: (1) This device may not cause harmful interference, and (2) this device must accept any interference received, including interference that may cause undesired operation.

Please contact one of our Product Specialists for assistance or questions at:  
1-800-537-8484 or email [ps@frontgate.com](mailto:ps@frontgate.com)

Specialists are available weekdays 8:00 a.m. to 8:00 p.m. EST or Saturday 9:30 a.m. to 6:00 p.m.