

v1
R2


 PLATINUM

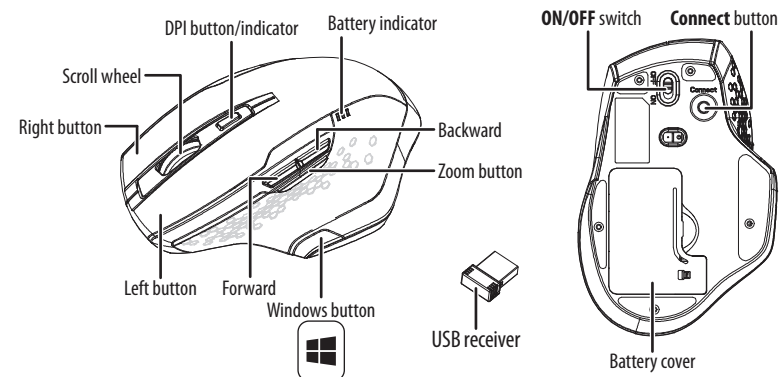
PACKAGE CONTENTS

- Keyboard
- 2 AA (For Mouse)
- USB receiver
- Mouse
- 2 AAA (For Keyboard)
- Quick Setup Guide

SYSTEM REQUIREMENTS

- Windows® 10, Windows® 8, Windows® 7, or Mac OS 10.X or higher
- One available USB port

MOUSE FEATURES



PT-PNC7506BK-C

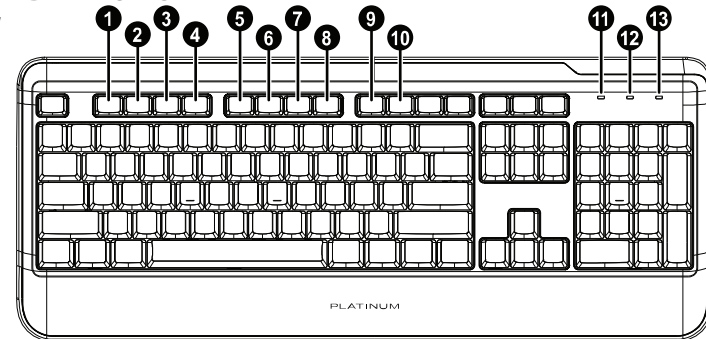
WIRELESS KEYBOARD & MOUSE COMBO

QUICK SETUP GUIDE

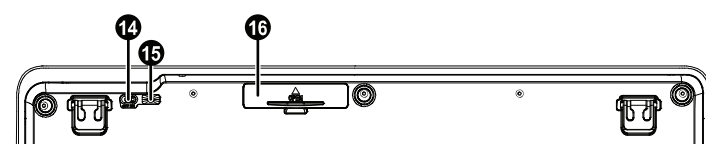
Before using your new product, please read these instructions to prevent any damage.

KEYBOARD FEATURES

Front view



Back view

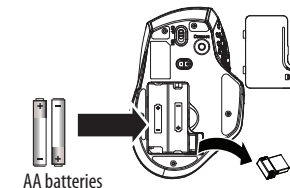


#	ICON	ITEM	DESCRIPTION
1	▶/	Play/Pause	Press to play or pause media.
2	◀◀	Previous	Press to select the previous media track.
3	▶▶	Next	Press to select the next media track.
4	🔇	Mute	Press to turn off the computer's sound.
5	🏠	Homepage	Press to open your default web browser and load your homepage.
6	✉	Email	Press to open your default email program.
7	🔍	Search	Press to search inside apps, albums, artists, or songs.
8	📌	My Favorites	Press while in your web browser to open your favorite web pages.
9	💻	My Computer	Press to open My Computer.
10	🧮	Calculator	Press to open the Microsoft calculator.
11	A	Caps lock indicator	Lights up when caps lock is turned on.
12	1	Number lock indicator	Lights up when number lock is turned on.
13	🔋	Power/ Low battery/ Pairing indicator	Lights up to display the keyboard's power, battery, or pairing status.
14		Power switch	Slide to turn your keyboard on or off.
15		Connect button	Press to pair your keyboard to your computer.
16		Battery cover	Remove to replace the batteries.

INSTALLING BATTERIES

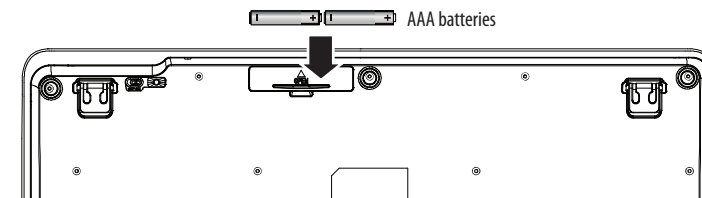
Mouse

- 1 Remove the battery cover, then remove the USB receiver from the compartment.
- 2 Insert two AA alkaline batteries, then replace the cover. Make sure that the + and – signs match the symbols in the compartment.



Keyboard

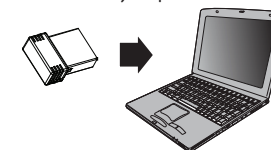
- Remove the battery cover, insert two AAA alkaline batteries, then replace the cover. Make sure that the + and – signs match the symbols in the compartment.



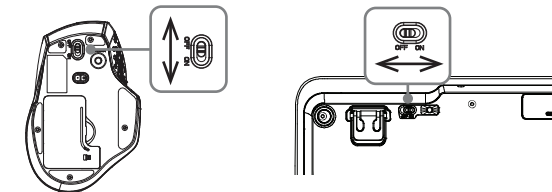
CONNECTING YOUR MOUSE/KEYBOARD TO YOUR COMPUTER

- 1 Connect the USB receiver to an available USB port on your computer. Your computer installs the necessary drivers automatically.

Note: Your USB receiver is inside your mouse's battery compartment.



- 2 Slide your mouse and keyboard's power switches **ON**. Your computer automatically detects the mouse and keyboard.



If the mouse or keyboard does not work:

- Reconnect the USB receiver to the USB port.
- Press the **Connect** button on the bottom of your mouse or keyboard. The LED blinks while pairing, then turns off.
- Check the batteries in your mouse or keyboard

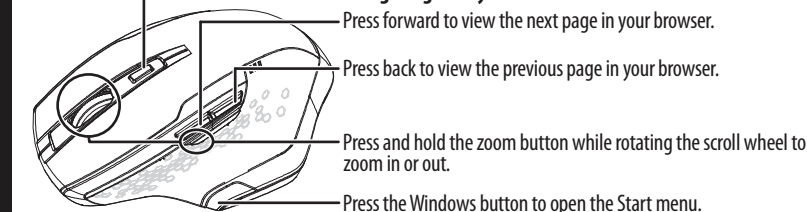
USING YOUR MOUSE

Adjusting your mouse sensitivity (DPI)

Press the DPI button repeatedly to switch between 1600, 2400, and 3000 DPI. The DPI indicator lights up for 10 seconds:

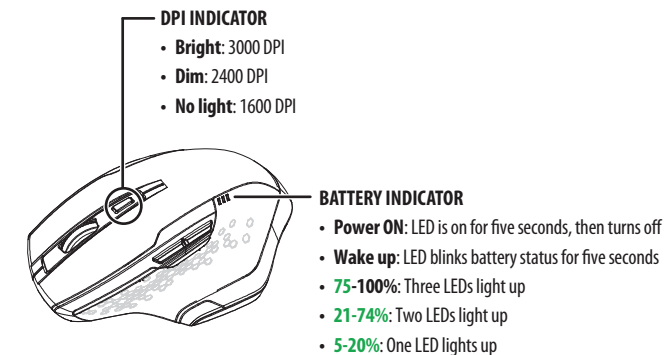
- **Bright:** 3000 DPI
- **Dim:** 2400 DPI
- **No light:** 1600 DPI

Navigating with your mouse

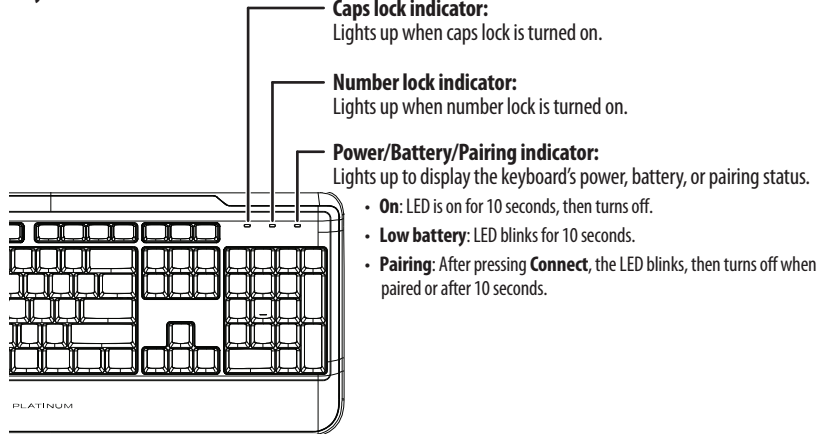


UNDERSTANDING INDICATOR LIGHTS

Mouse



Keyboard



CLEANING YOUR MOUSE AND KEYBOARD

- Wipe the mouse and keyboard with a damp, lint-free cloth.

TROUBLESHOOTING

My mouse or keyboard is not working.

- Make sure that your mouse and keyboard are turned on.
- Move your keyboard and mouse closer to your computer.
- Make sure that your computer meets the system requirements.
- Only use the mouse on a clean, flat, non-slippery surface to ensure smooth and accurate cursor action.
- Avoid using your mouse on reflective, transparent, or metallic surfaces.
- Make sure that your mouse or keyboard and USB receiver are paired by pressing the connect button on the mouse or keyboard.
- Replace the mouse or keyboard batteries.
- Try connecting your USB receiver into a different USB port on your computer.
- Try removing or moving other wireless devices near the computer to prevent interference.

SPECIFICATIONS

Mouse:

- Dimensions (L×W×H): 4.9×3.3×1.7 in. (12.52×8.4×4.46 cm)
- Net weight: 4.23 oz. (.12 kg)
- Batteries: 2 AA alkaline batteries
- Battery life: 12 months (based on average usage)
- Radio frequency: 2.4 Ghz
- Operating distance: 32.8 feet (10 meters)
- Rating: 3V D.C. - 10 mA

USB receiver:

- Dimensions (L×W×H): 0.74×0.57×0.25 in. (1.89×1.45×0.63 cm)
- Weight: 0.17 oz. (.005 kg)
- Interface: USB 1.1, 2.0, 3.0

Keyboard

- Dimensions (H×W×D): 17.96×7.35×0.75 in. (45.61×18.66×1.91 cm)
- Weight: 35.28 oz. (1.0 kg)
- Rating: 3V C.C. - 4mA
- Radio frequency: 2.4Ghz
- Operating distance: 33 feet (10 meters)
- Battery: 2 AAA alkaline
- Battery life: 6 months (based on average usage)

IMPORTANT SAFETY INFORMATION

- This product has no serviceable parts. Use of controls or adjustments of procedures other than this guide may result in danger.
- DO NOT direct the beam at anyone's eye.

CAUTION: To use this product properly, please read this guide before installing.

LEGAL NOTICES

- This product complies with IEC 60825-1, class 1 laser product.

This device complies with Industry Canada license-exempt RSS standard(s).

Operation is subject to the following two conditions: (1) this device may not cause interference, and (2) this device must accept any interference, including interference that may cause undesired operation of the device.

Le present appareil est conforme aux CNR d'Industrie Canada applicables aux appareils radio exempts de licence. L'exploitation est autorisee aux deux conditions suivantes : (1) l'appareil ne doit pas produire de brouillage, et (2) l'utilisateur de l'appareil doit accepter tout brouillage radioelectrique subi, meme si le brouillage est susceptible d'en compromettre le fonctionnement.

Radiation Exposure Statement:

The product complies with the FCC portable RF exposure limit set forth for an uncontrolled environment and is safe for intended operation as described in this manual. The further RF exposure reduction can be achieved if the product can be kept as far as possible from the user body or set the device to lower output power if such function is available.

ONE-YEAR LIMITED WARRANTY

CONTACT PLATINUM

For customer service, call 1-800-499-3964

The Pt Logo is a registered trademark of Best Buy. PLATINUM is a trademark of Best Buy and its affiliated companies. Distributed by Best Buy Purchasing, LLC. 7601 Penn Ave South, Richfield, MN 55423 U.S.A. ©2017 Best Buy. All rights reserved. **Made in China**

FCC Statement:

This device complies with part 15 of the FCC Rules. Operation is subject to the following two conditions:

- (1) This device may not cause harmful interference, and
- (2) this device must accept any interference received, including interference that may cause undesired operation.

NOTE: This equipment has been tested and found to comply with the limits for a Class B digital device, pursuant to part 15 of the FCC Rules. These limits are designed to provide reasonable protection against harmful interference in a residential installation.

This equipment generates, uses and can radiate radio frequency energy and, if not installed and used in accordance with the instructions, may cause harmful interference to radio communications. However, there is no guarantee that interference will not occur in a particular installation.

If this equipment does cause harmful interference to radio or television reception, which can be determined by turning the equipment off and on, the user is encouraged to try to correct the interference by one or more of the following measures:

- Reorient or relocate the receiving antenna.
- Increase the separation between the equipment and receiver.
- Connect the equipment into an outlet on a circuit different from that to which the receiver is connected.
- Consult the dealer or an experienced radio/TV technician for help.

Changes or modifications not expressly approved by the party responsible for compliance could void the user's authority to operate the equipment.