

# Mini RF Laser Mouse

## *OWNER'S GUIDE*



Please **DO NOT** direct the laser beam at anyone's eye.

# LAYER

CAUTION : To use this product properly, please read the user's guide before installation

# Welcome

Your mouse uses a new generation technology – laser module that replaces the traditional LED mouse and provides amazing tracking ability. The laser module accurately scans the surface in 30 times sensitive of LED optical mouse. You can work with your mouse in most surfaces perfectly. The mouse uses the digital radio technology as a convenient wireless application. Especially combine with a rechargeable box for your mouse's batteries; you can have the best compact solution to work with your notebook.

## Safety Notice

1. This product complies with IEC 60825-1, class 1 laser product.
2. Your product complies with FCC and CE rules.
3. This product has no serviceable parts. Use of controls or adjustments of procedures other than the user guide may result in dangerous.



Please **DO NOT** direct the laser beam at anyone's eye.

## CAUTION:

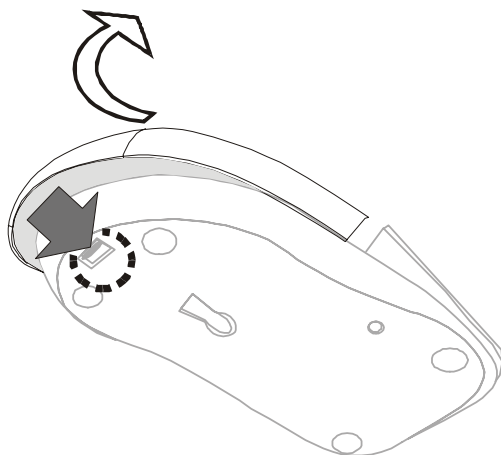
**Change or modifications not expressly approved by the manufacturer responsible for compliance could void the user's authority to operate the equipment**

## Installing the batteries

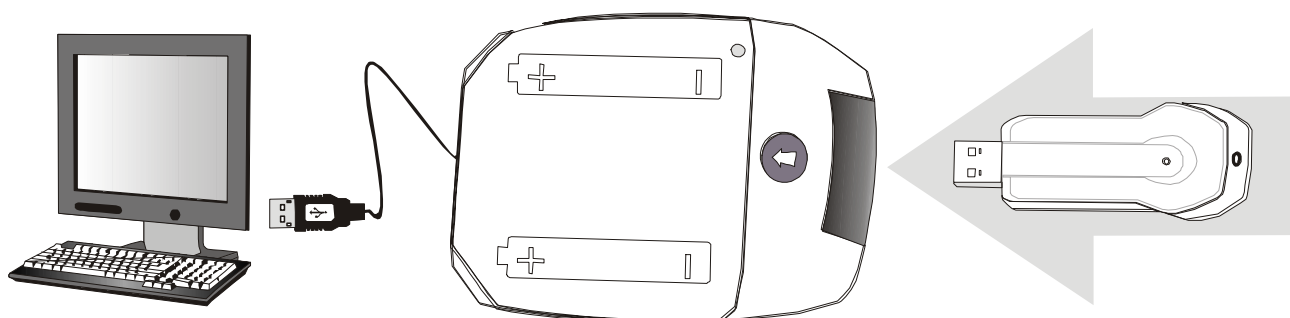
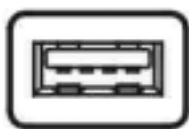
Step 1 Press the tag on the bottom-end of mouse and pull the slide cover backward to remove the battery compartment cover.

Step 2 Insert the batteries as shown inside the battery compartment.

Step 3 Replace the cover.



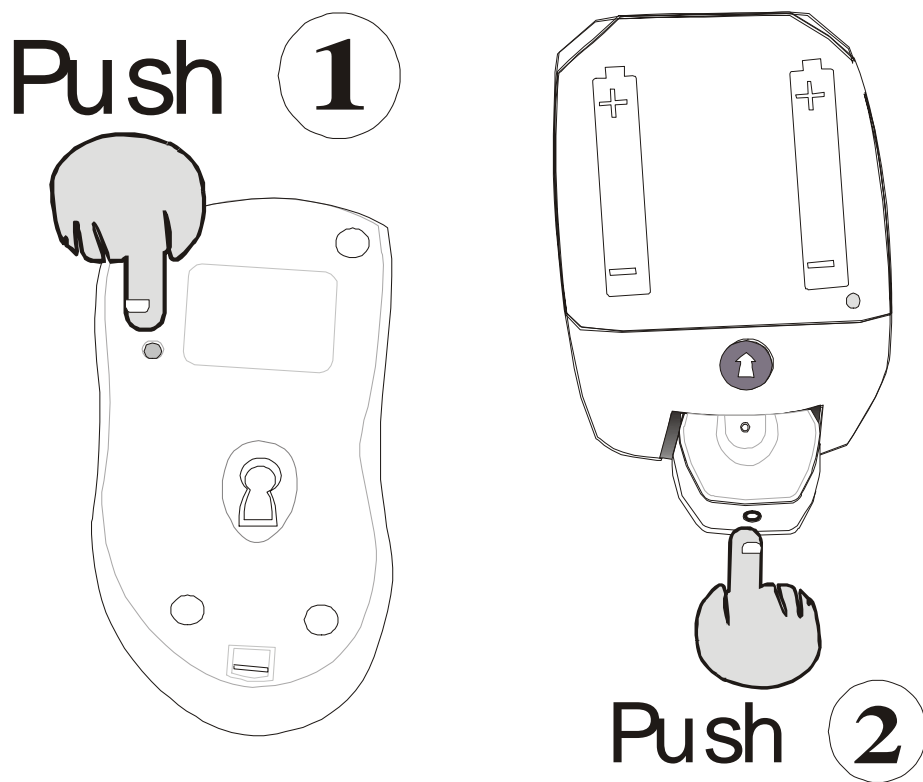
## Install the Receiver and the recharger



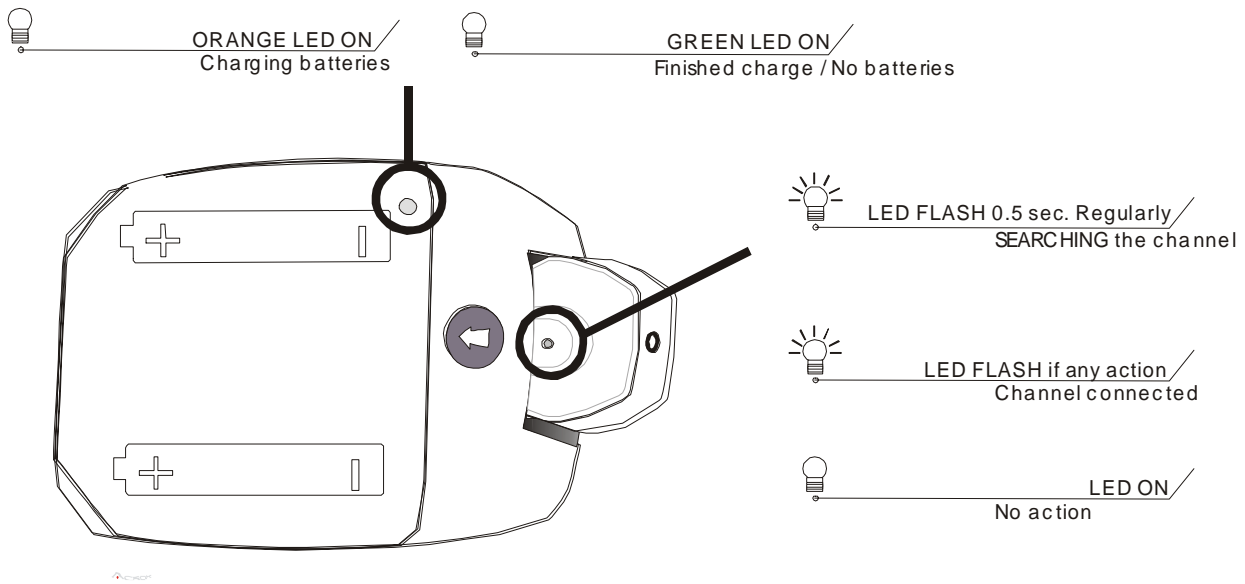
## Setup the connection Rf channel between the Mouse and the Receiver

1. Press the ID Switch button on the Mouse
2. Press the ID Switch button on the bottom of the Receiver

If the mouse cursor does not move after 30 seconds, do above steps again.



**Caution:** If you had completed the connection successfully, The LED on the receiver will be flash several times. If the ID Setting is not properly, please re set your ID again by following the above steps. Please re-setup the Rf channel since you replace batteries



## Using your mouse

### How to use the wheel

Your mouse has a wheel that functions both as a wheel for Windows Scrolling and also as a customized button. It can be used as a standard mouse button, click (press down) the wheel. To Use the Middle Button, Directly Press down the Wheel. For scrolling the screen, simply move the wheel.



**Caution: It may interfere the optical sensor of the mouse, if your tabletop surface is in red color, transparent as glass or highly reflective like a mirror. Try to use a mouse pad or use your mouse on a different tabletop surface.**

# Troubleshooting

## Mouse does not work upon installation

Try one or more of the following:

- For optimal performance, place adjust the angle of the receiver to find the best performance.
- Make sure you have installed the batteries correctly.
- If you are working on a metallic surface, try using a mouse pad and

## Mouse not detected

When using the mouse, it may not be detected by the computer, To remedy this problem, try the following

- Make sure the receiver is plugged into the right mouse port.
- Make sure your mouse port has the proper configuration. Refer to your computer documentation for the correct port configuration.
- You may have other system devices (e.g. a LAN card) that conflict with your mouse. Check the IRQ/address settings of these devices for conflicts, and change the settings as required.

turning the receiver on its side for better reception

- Press the CONNECT button on the receiver, then press the Connect button on the mouse.

## **The Screen Cursors Does Not Move Properly**

- Change the angle of your radio receiver,. Try adjusting the receiver and/or mouse to improve reception.
- Make sure that the battery low indicator is NOT lit on. Replace batteries if the low battery indicator is lit on.
- You may also need to change the channel / ID for the mouse, Press the Connect button on the receiver, then press the Connect button on the mouse.

This device complies with part 15 of the FCC rules. Operation is subject to the following two conditions.

- 1) This device may not cause harmful interference, and
- 2) This device must accept any interference received, including interference that may cause undesired operation.

Per FCC 15.21, you are cautioned that changes or modifications not expressly approved by the part responsible for compliance could void the user's authority to operate the equipment.