

Deluxe RF Laser Mouse

With Office hot key

OWNER'S GUIDE



Please **DO NOT** direct the laser beam at anyone's eye.

CAUTION : To use this mouse properly, please read the user's guide before installation

Welcome

Your mouse uses a new generation technology – laser module that replaces the traditional LED mouse and provides amazing tracking ability. The laser module accurately scans the surface in 30 times sensitive of LED optical mouse. You can work with your mouse in most surfaces perfectly.

Safety Notice

1. This product complies with IEC 60825-1, class 1 laser product.
2. Your product complies with FCC and CE rules.
3. This product has no serviceable parts. Use of controls or adjustments of procedures other than the user guide may result in dangerous.

CAUTION:

Change or modifications not expressly approved by the manufacturer responsible for compliance could void the user's authority to operate the equipment



Please **DO NOT** direct the laser beam at anyone's eye.

SETUP the Mouse

The Mouse is connected to your computer via a cable. It needs to plug in your computer by a USB port or a mouse port.

For PS/2 mouse port installation

Please turn off your computer before installing your mouse. Plugging and unplugging cables to your computer's mouse port while the computer is running can damage the mouse port or your Computer.

PS2 Mouse Port



For USB port installation

Windows 98 (or higher) and Macintosh OS 8.6 (or higher) are required for USB port installation. Connect the receiver cable to the USB port on the computer. For Windows, you may be prompted to insert the Windows software CD. Insert the divers' CD into the computer's CD-ROM driver when asked to do so. Follow the instructions steps.

USB Port

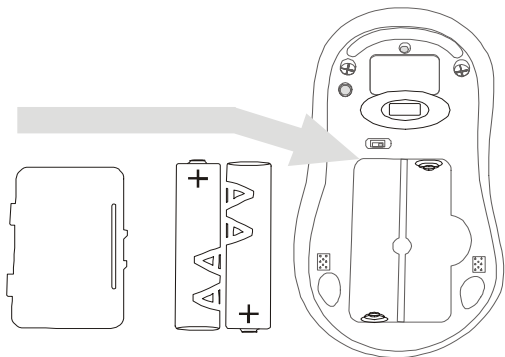


Installing the batteries

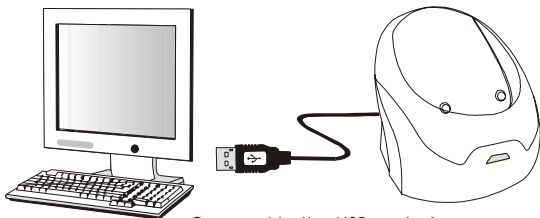
Step 1 Press the tag on the battery compartment cover of the mouse and pull up.

Step 2 Insert the batteries as shown inside the battery compartment.

Step 3 Replace the cover.

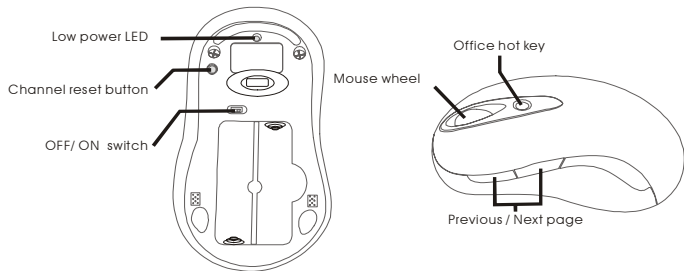


Install the Receiver and the recharger

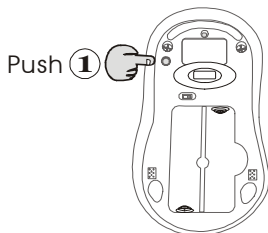


Connect to the USB port of your computer

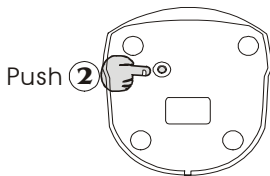
Functional Introduction:



Setup the connection Rf channel between the Mouse and the Receiver

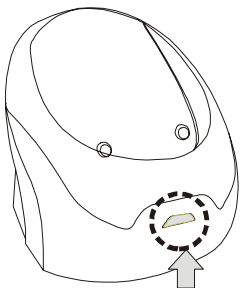


Push the channel reset button on the mouse



Push the channel reset button on the receiver

If the cursor does NOT move after 30 seconds, please re-do the steps above.



Green LED FLASH 0.5 sec. Regularly
SEARCHING the channel

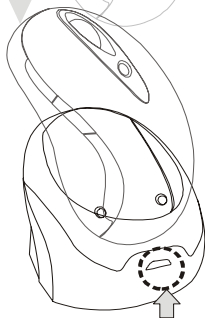
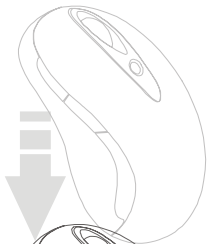


Green LED FLASH if any action
Channel connected



Green LED ON
No action

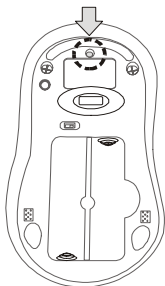
Recharging:



Red LED FLASH
Low Power



Red LED off
Normal / No batteries



Red LED ON
Recharging



Red LED OFF
finished charging

Using your mouse

How to use the wheel

Your mouse has a wheel that functions both as a wheel for Windows Scrolling and also as a customized button. It can be used as a standard mouse button, click (press down) the wheel. To Use the Middle Button, Directly Press down the Wheel. For scrolling the screen, simply move the wheel.



Software Installation

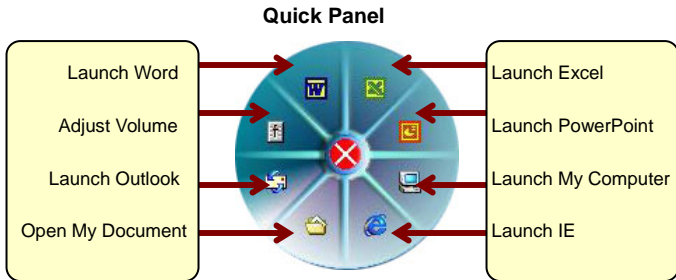
Please follow the steps below to install your mouse driver:

1. Follow the instruction on screen; system will install the Driver automatically.
2. Insert your driver disk into the driver.
3. Go to "Start" Menu and select "Run".
4. Type "A:\Setup", press the "Enter" button on your keyboard.
5. Reboot your system while completing the installation process.
("A:" device CD drive or floppy drive)

Utility & Office hot key:

The Office hot key provides you with easy way to customize your mouse operations and total control over the screen without using taskbar or start menu.

You just need to press the Office Selector Key on your mouse then round shaped quick panel will pop up. You will see eight items on the Quick Panel providing effective accessibility for most frequently used Windows applications including Word, Excel and PowerPoint. You just need to click on the item you want to launch.

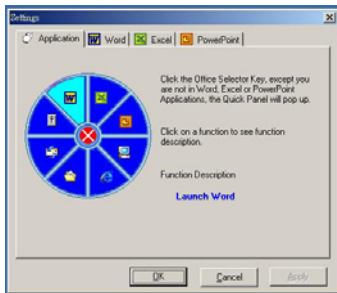


(Tips: There are popup tips when you point on the screen icons.)

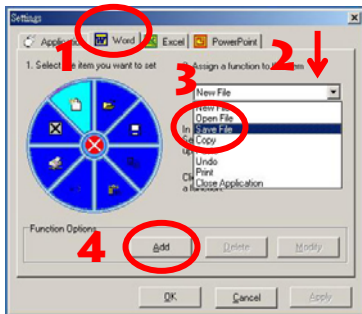
Utility Settings

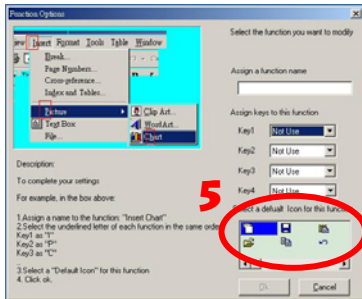
Double click the mouse icon on the right bottom corner of the Windows screen to get into the setting window.

You can add new functions to your Quick Panel for making your own frequently Command Quick Panel in the Office applications.



Example: Add a “save” functional key in the Quick Panel for the Word application.





Important Notes:

- Please follow the instructions contained in the instruction manual. Do not try to disassemble or replace parts in the product.
- Do not put the product in water or on any wet surface; if this occurs quickly remove from the computer and take to your nearest dealer for repair.
- To avoid electrocution, please do not pick up the device when your hands are wet.
- Do not put the product near a heat source or put the product in high temperatures.
- This product's casing has holes for the drive to ventilate. Do not cover the ventilation holes in order to avoid hard drive damage.

Troubleshooting

Mouse does not work upon installation

Try one or more of the following:

- Make sure you have installed the Driver correctly.
- Make sure the receiver cable is plugged into the right mouse port.
- Unplug the Mouse and then plug in the mouse again. Make sure that Mouse had been detected by the Operating Systems properly.
- Make sure your mouse port has the proper configuration. Refer to your computer documentation for the correct port configuration.
- You may have other system devices (e.g. a LAN card) that conflict with your mouse. Check the IRQ/address settings of these devices for conflicts, and change the settings as required.

MP1 Work Basis

Mouse (optical):

1. When the mouse was moved, the optical sensor would detect the different between two points, and then sensor will send the signal to the MP1.
2. The MP1 will encode the signal and modulate the signal that uses FSK modulation type).
3. Through the 27 MHz RF circuit transmit the modulation signal.

Receiver:

1. When the receiver receives the modulation signal will demodulate signal through RF circuit. And responds signal to MP1.
2. The MP1 meeting decodes the signal PC acceptable format.

ps. FSK: Frequency Shift Key

MP1: Micro Control Unit

RF: Radio Frequency

FCC ID LABEL FORMAT AND LOCATION

Applicant: Acrox Technologies Co., Ltd.

FCC ID: PRDMPO008PXOX

FCC ID: PRDMPO008PXOX

This device complies with part 15 of the FCC Rules. Operation is subject to the following two conditions: (1) This device may not cause harmful interference, and (2) this device must accept any interference received, including interference that may cause undesired operation.



FCC ID LABEL AREA

Federal Communication Commission Interference Statement

This equipment has been tested and found to comply with the limits for a Class B digital device, pursuant to Part 15 of the FCC Rules. These limits are designed to provide reasonable protection against harmful interference in a residential installation. This equipment generates, uses and can radiate radio frequency energy and, if not installed and used in accordance with the instructions, may cause harmful interference to radio communications. However, there is no guarantee that interference will not occur in a particular installation. If this equipment does cause harmful interference to radio or television reception, which can be determined by turning the equipment off and on, the user is encouraged to try to correct the interference by one of the following measures:

- Reorient or relocate the receiving antenna.
- Increase the separation between the equipment and receiver.
- Connect the equipment into an outlet on a circuit different from that to which the receiver is connected.
- Consult the dealer or an experienced radio/TV technician for help.

FCC Caution: Any changes or modifications not expressly approved by the party responsible for compliance could void the user's authority to operate this equipment.

This device complies with Part 15 of the FCC Rules. Operation is subject to the following two conditions: (1) This device may not cause harmful interference, and (2) this device must accept any interference received, including interference that may cause undesired operation.