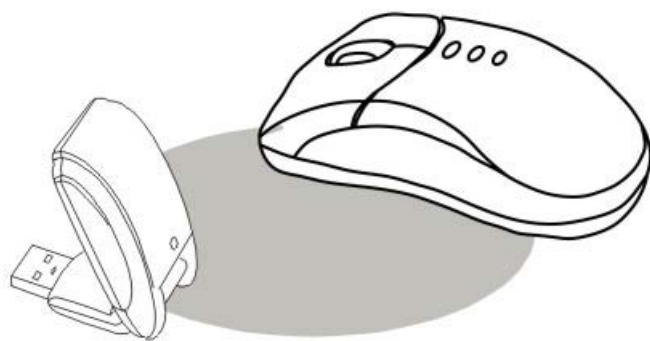


Mini 3D RF Laser Mouse

With/Dry Battery

OWNER'S GUIDE

Ver.1.0



CAUTION: To use this product properly, please read the user's guide before installation

050728LMPK+MR3

Welcome

Your mouse uses a new generation technology ?laser module that replaces the traditional LED mouse and provides amazing tracking ability. The laser module accurately scans the surface in 30 times sensitive of LED optical mouse. It also uses the digital raid technology as a convenient wireless application. The compact receiver and the wireless mouser provide you the best way to work with your notebook or computer.

Safety Notice

1. This product complies with IEC 60825-1, class 1 laser product.
2. Your product complies with FCC and CE rules.
3. This product has no serviceable parts. Use of controls or adjustments of procedures other than the user guide may result in dangerous.

Federal Communications Commission (FCC) Notice

This device complies with Part 15 of the FCC rules. Operation is subject to the following two conditions

- (1) This device may not cause harmful interference, and
- (2) This device must accept any interference received, including interference that may cause undesired operation.

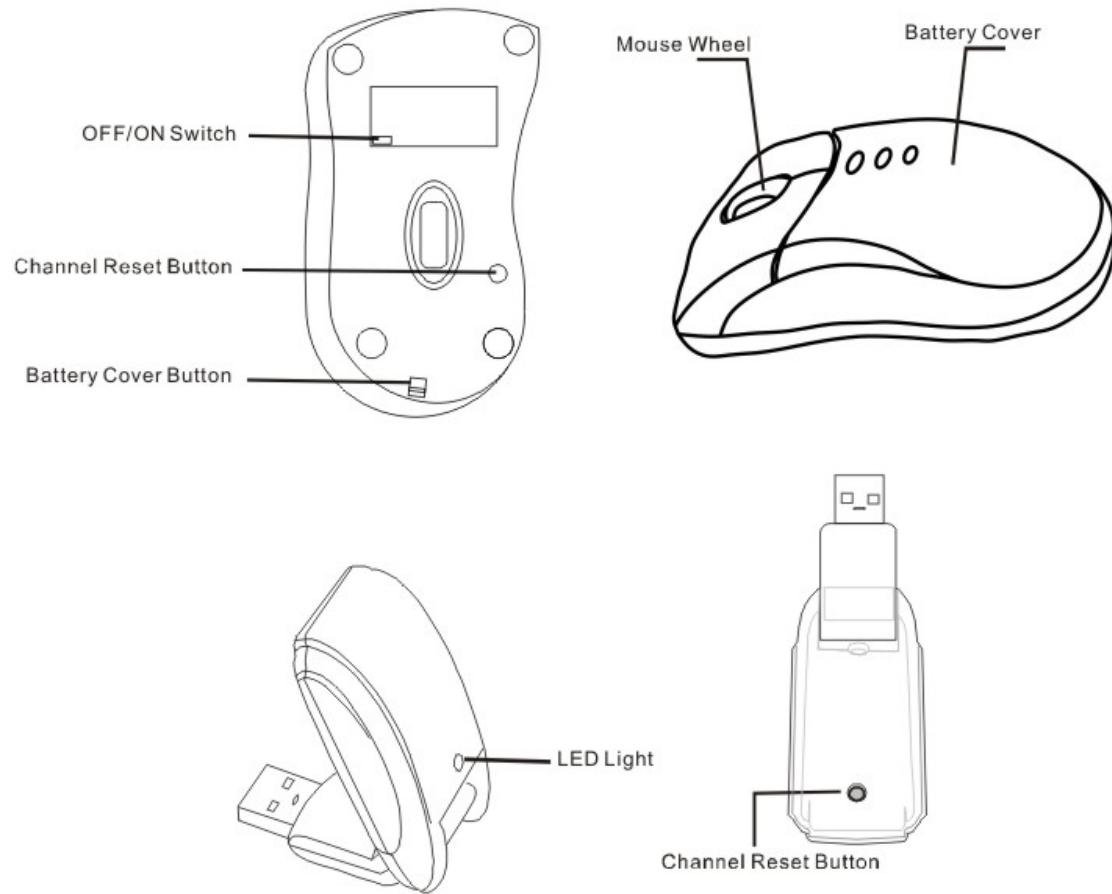
This equipment has been tested and found to comply with the limits of a Class B digital device, pursuant to Part 15 of the FCC Rules These limits are designed to provide reasonable protection against harmful interference in a residential installation This equipment generates, uses and can radiate radio frequency energy and, if not installed and used in accordance with the instructions, may cause harmful interference to radio communications. However, there is no guarantee that interference will not occur in particular installations If this equipment does cause harmful interference to radio or television reception, which can be determined by turning the equipment off and on, the user is encouraged to try to correct the interference by one or more of the following measures :

1. Reorient / Relocate the receiving antenna.
2. Increase the distance between the mouse and receiver.
3. Connect the equipment into an outlet on a circuit different from that the receiver is connected.
4. Consult the dealer or an experienced radio /TV technician for help

CAUTION:

Change or modifications not expressly approved by the manufacturer responsible for compliance could void the user's authority to operate the equipment

Functional Introduction

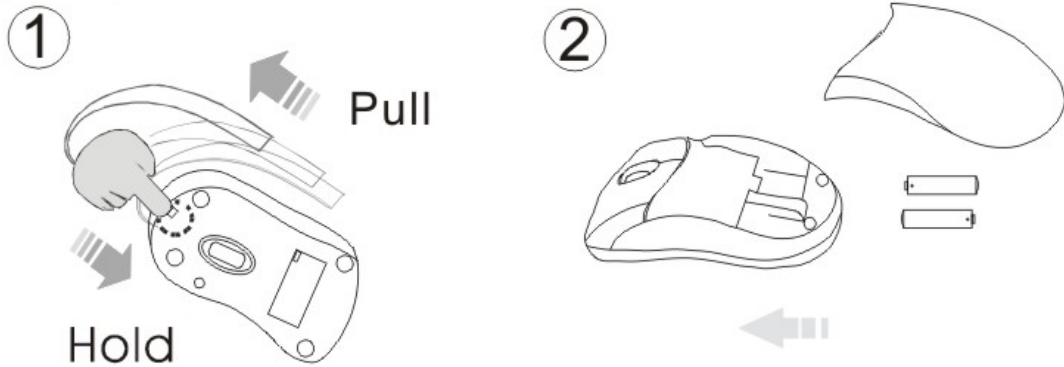


Installing the Batteries

Step 1: Press the button on the mouse and pull the battery cover backward.

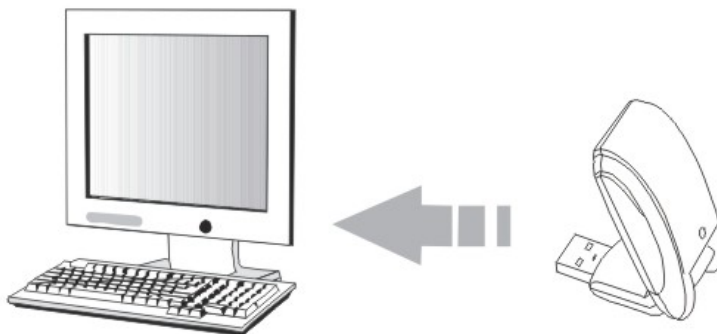
Step 2: Insert the batteries as shown inside the battery compartment.

Step 3: Replace the cover.



Install the Receiver

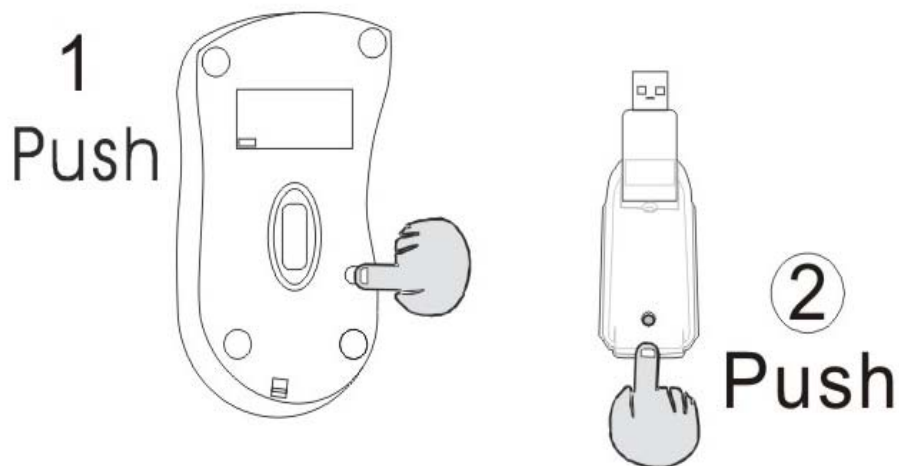
The receiver is connected to your computer via a cable. It needs to plug in your computer by a USB port.



Connect to the USB port of your computer

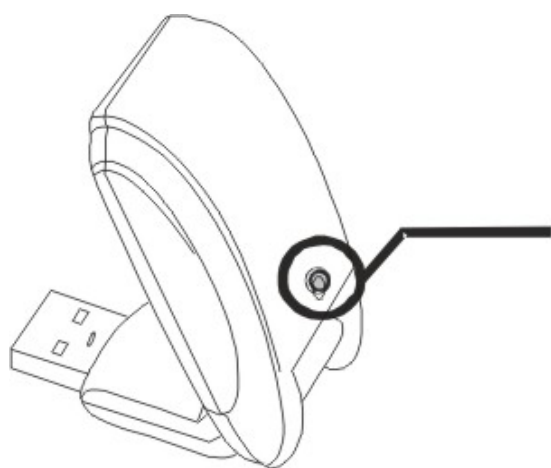
This RF Mouse is a plug-and-play device. Normally, it is not necessary to setup the RF Channel. But if some interference happens, then you must setup the connection RF Channel.

Setup the connection RF channel between the Mouse and the Receiver



Push the channel reset button on the mouse. Push the channel reset button on the receiver. If the cursor does NOT move after 30 seconds, please do the steps above.

Caution: If you had completed the connection successfully, The LED on the receiver will be flash several times. If the RF Channel is not properly, please reset RF Channel again by following the above steps. Please re-setup the RF channel since you replace batteries



LED FLASH (0.5 sec. Regularly)
Searching the channel



LED FLASH (If any action)
Channel connected



LED ON
No action

Using your mouse

How to use the wheel

Your mouse has a wheel that functions both as a wheel for Windows Scrolling and also as a customized button. It can be used as a standard mouse button, click (press down) the wheel. To Use the Middle Button, Directly Press down the Wheel. For scrolling the screen, simply move the wheel.



Troubleshooting

A. Mouse does not work upon installation.

Try one or more of the following:

- For optimal performance, place adjust the angle of the receiver to find the best performance.
- Make sure you have installed the batteries correctly.
- Press the Channel Reset button on the receiver, and then press the Channel Reset button on the mouse.

B. Mouse not detected.

When using the mouse, it may not be detected by the computer or receiver. To remedy this problem, try the following

- Make sure the receiver is plugged in the USB port.
- You may re-setup the connection RF Channel between the Mouse and the Receiver (Please refer the procedure on Page 4), especially, when you have been changed or recharged your batteries.

C. The Screen Cursors Does Not Move Properly.

- Change the angle of your radio receiver. Try adjusting the receiver and/or mouse to improve reception.
- Make sure that the battery low indicator is NOT lit on. Replace batteries if the low battery indicator is lit on.
- You may also need to change the RF Channel for the mouse, Press the □ Channel Reset□ button on the receiver, then press the □ Channel Reset□ button on the mouse.

D. Mouse does not work upon installation.

Try one or more of the following:

- Make sure the receiver is plugged in USB port.
- Unplug the receiver and then plug in the receiver again. Make sure that it had been detected by the Operating Systems properly.