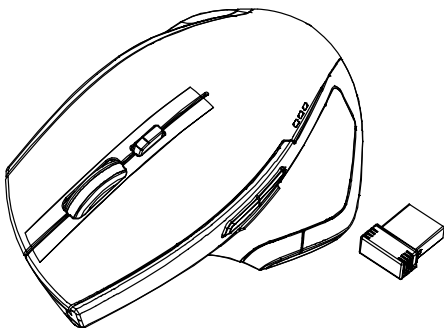


2.4GHz Wireless BlueTrace Mouse w/Nano Receiver

USER'S GUIDE

Ver.:1.00



CAUTION: To use this product properly, please read the user's guide before installing.

Federal Communication Commission Interference Statement

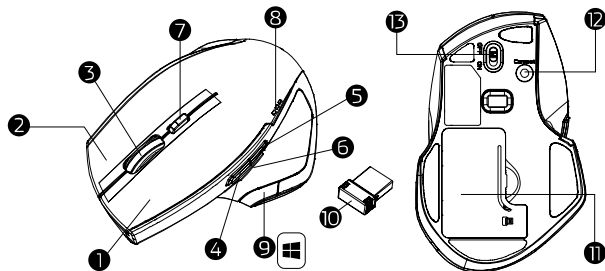
This equipment has been tested and found to comply with the limits for a Class B digital device, pursuant to Part 15 of the FCC Rules. These limits are designed to provide reasonable protection against harmful interference in a residential installation. This equipment generates, uses and can radiate radio frequency energy and, if not installed and used in accordance with the instructions, may cause harmful interference to radio communications. However, there is no guarantee that interference will not occur in a particular installation. If this equipment does cause harmful interference to radio or television reception, which can be determined by turning the equipment off and on, the user is encouraged to try to correct the interference by one of the following measures:

- Reorient or relocate the receiving antenna.
- Increase the separation between the equipment and receiver.
- Connect the equipment into an outlet on a circuit different from that to which the receiver is connected.
- Consult the dealer or an experienced radio/TV technician for help.

FCC Caution: Any changes or modifications not expressly approved by the party responsible for compliance could void the user's authority to operate this equipment.

This device complies with Part 15 of the FCC Rules. Operation is subject to the following two conditions: (1) This device may not cause harmful interference, and (2) this device must accept any interference received, including interference that may cause undesired operation.

Functional Introduction



1. Left button
2. Right button
3. Scrolling Wheel
4. Forward
5. Backward
6. ZOOM Key
7. DPI Switch Key (LED Indicator)

8. Battery status LED Indicator
9. Win Key
10. Nano Receiver
11. Battery Cover
12. Connect Button
13. ON/OFF Switch

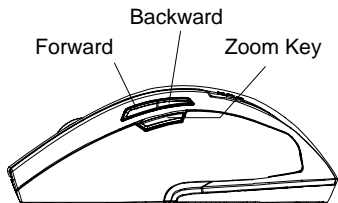
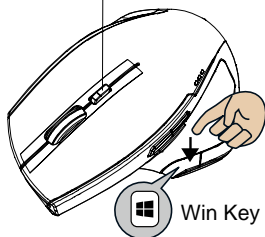
DPI Switch

The LED indicator under tilt wheel will light up when you plug the mouse into the USB port. The brightness of the indicator indicates the DPI setting in use. There are three different settings:

- Bright: 1600 DPI
- Dim: 1300 DPI
- No light: 800 DPI

The default setting is 800 DPI. You can easily switch between DPI settings. In order to save power, the LED display will only last for 10 seconds.

DPI Switch Key (LED Indicator)



Forward

Press this button to view the next page in your Internet browser.

Backward

Press this button to view the previous page in your Internet browser.

Zoom Key (Zoom in /out)

Press zoom key + scroll to zoom in/ out .

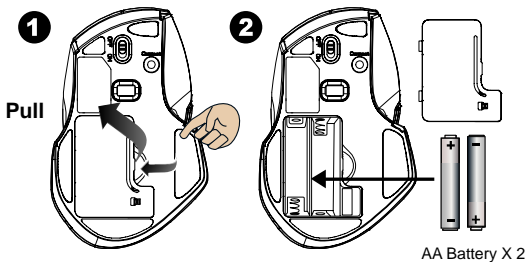
Win Key

Windows button for one-touch access to the Start screen

Installing the batteries

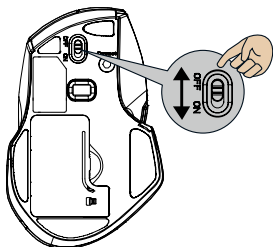
Step 1: Take the battery cover off.

Step 2: Insert the battery as shown inside the battery compartment.



Step 3: Replace the cover.

Step 4: Turn on power switch



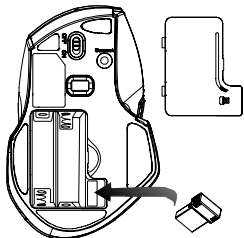
****Warning:**

*Please insert the battery with the correct position according to the instruction labeled on the mouse.

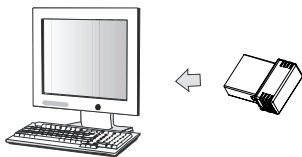
Step 5: If you need to travel with your wireless mouse, made sure you turn off the POWER SWITCH.

Setup the Connection between the Receiver and the Mouse

1. Insert the battery into the mouse, then follow the steps below.
2. In the meantime, to open the mouse under the cover, take the nano receiver out.



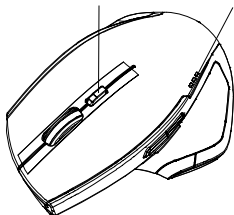
3. Plug the Nano receiver into the USB port on your computer.



4. If the mouse does not work, please put it into pairing mode.
5. Pairing: Re-plug the receiver into the USB port on your computer, then press the connect button on the mouse. If the mouse does not work after 10 seconds, pair them again. (The receiver has auto pairing function).
6. The LED indicator on mouse flashes steadily when it is in pairing mode and stops blinking when it is successfully paired with the receiver.
7. When low battery, the battery indicator on the mouse will start to blink.

DPI Switch Key
LED Indicator

Battery status
LED Indicator



*LED Indicator

LED is on for 3 sec.
Power ON



LED Blinks for 3 times
During Pairing (LED OFF when
paired or failed after 10 sec.)



LED Blinks for 10 sec.
Low Battery Warning



DPI Indicated
(when DPI switched)

Battery status LED Indicator

Power ON	LED is on for 5 sec.
Wake up	LED blinks battery status for 5 sec.
3 LED Bright	80~100%
2 LED Bright	50~70%
1 LED Bright	20~40%