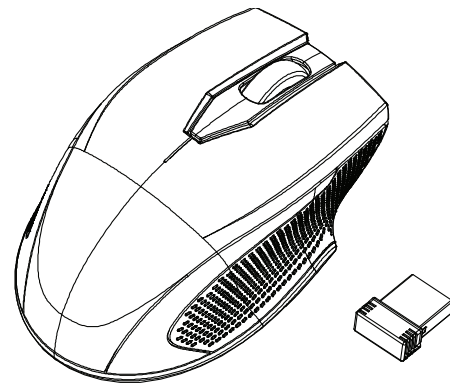


INSIGNIA

## QUICK SETUP GUIDE

## Wireless Optical Mouse

NS-PNM7013-BK/NS-PNM7013-BL/NS-PNM7013-RD



## PACKAGE CONTENTS

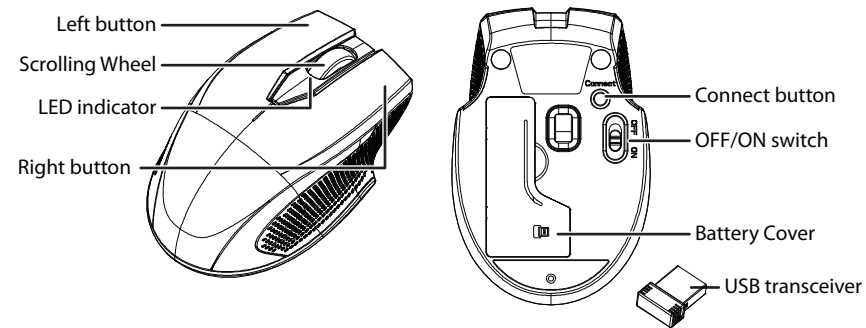
- Wireless Optical Mouse
- USB transceiver
- AA battery (1)
- Quick Setup Guide

## SYSTEM REQUIREMENTS

- Windows® 10, Windows® 8.1, Windows® 8, Windows® 7, Windows Vista®, or Mac OS 10.X or higher
- One available USB port

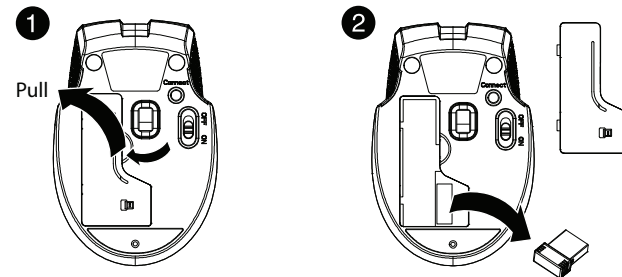
## FEATURES

- Blue sensor for enhanced tracking



## INSTALLING THE BATTERY AND REMOVING THE USB TRANSCEIVER

- 1 Take the battery cover off.
- 2 Remove the USB transceiver from package or from battery compartment.



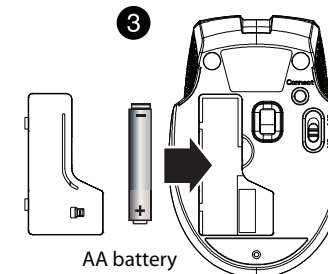
Final flat size: 15 x 7.5 in (381 x 190.5 mm)  
Final fold size: 5 x 7.5 in (127 x 190.5 mm)

V1  
FINAL  
FOR PRINT

- 3 Insert the included AA battery into the battery compartment. Make sure that the + and - signs match the symbols in the compartment.

- 4 Replace the battery cover.

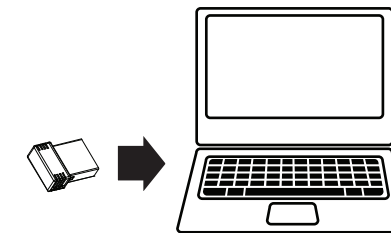
**Tip:** Store the USB transceiver in the mouse when it is not in use.



## CONNECTING YOUR MOUSE TO YOUR COMPUTER

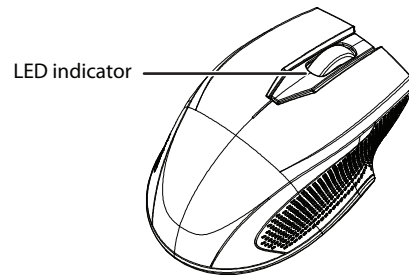
- 1 Plug the USB transceiver into a USB port on your computer.
- 2 Slide the ON/OFF switch on your mouse to **ON**.

The computer automatically detects the mouse and you can immediately begin using it.

**If the mouse does not work:**

- Move your mouse closer to your computer.
- Re-plug the USB transceiver into the USB port on your computer, then press the connect button on the mouse. The LED indicator on the mouse flashes steadily while in pairing mode (10 seconds). After pairing successfully, the LED indicator blinks for 10 seconds, then turns off.
- Check the battery in your mouse. The LED indicator blinks for 10 seconds when the battery is low.

## LED INDICATOR



FUNCTION	DESCRIPTION
<b>Power ON</b>	LED is on for 3 seconds, then turns off.
<b>Low battery warning</b>	LED blinks for 10 seconds.
<b>Pairing</b>	LED blinks three times after pressing the <b>Connect</b> button.
<b>Pairing failed</b>	After the <b>Connect</b> button is pressed, the LED blinks, then lights solid for 10 seconds.

## CLEANING YOUR MOUSE

- Wipe the mouse with a damp, lint-free cloth.

## SPECIFICATIONS

### Mouse:

- Dimensions (L×W×H): 3.85 × 2.57 × 1.43 in. (9.78 × 6.53 × 3.64 cm)
- Weight: 1.86 oz. (.05 kg)
- Battery: 1 AA alkaline battery
- Battery life: 6 months (based on average usage)
- Radio frequency: 2.4Ghz
- Operating distance: 33 feet (10 meters)
- Rating: 1.5V C.C. - 10mA

### USB transceiver:

- Dimensions (L×W×H): .7 × .6 × .2 in. (1.8 × 1.4 × .6 cm)
- Weight: 1.2 g ± 0.5g
- Interface: USB 1.1, 2.0, 3.0

## TROUBLESHOOTING

### My mouse is not working.

- Move your mouse and computer closer together.
- Make sure that your computer meets the system requirements.
- Only use the mouse on a clean, flat, non-slippery surface to ensure smooth and accurate cursor action.
- If your mouse stops working:
  - Make sure that your mouse and USB transceiver are paired by pressing the connect button on the mouse.
  - Replace the mouse battery.
  - Try connecting your USB transceiver into a different USB port on your computer.
- Avoid using your mouse on reflective, transparent, or metallic surfaces.

## LEGAL NOTICES

### FCC Statement

This device complies with Part 15 of the FCC Rules. Operation is subject to the following two conditions: (1) this device may not cause harmful interference, and (2) this device must accept any interference received, including interference that may cause undesired operation.

This equipment has been tested and found to comply with the limits for a Class B digital device, pursuant to Part 15 of the FCC Rules. These limits are designed to provide reasonable protection against harmful interference in a residential installation. This equipment generates, uses and can radiate radio frequency energy and, if not installed and used in accordance with the instructions, may cause harmful interference to radio communications. However, there is no guarantee that interference will not occur in a particular installation. If this equipment does cause harmful interference to radio or television reception, which can be determined by turning the equipment off and on, the user is encouraged to try to correct the interference by one or more of the following measures:

- Reorient or relocate the receiving antenna.
- Increase the separation between the equipment and receiver.
- Connect the equipment into an outlet on a circuit different from that to which the receiver is connected.
- Consult the dealer or an experienced radio/TV technician for help.

**Warning:** Changes or modifications not expressly approved by the party responsible for compliance could void the user's authority to operate the equipment.

### RSS-Gen and RSS-210 statement

This device complies with Industry Canada license-exempt RSS standard(s).

Operation is subject to the following two conditions: (1) this device may not cause interference, and (2) this device must accept any interference, including interference that may cause undesired operation of the device.

Le présent appareil est conforme aux CNR d'Industrie Canada applicables aux appareils radio exempts de licence. L'exploitation est autorisée aux deux conditions suivantes : (1) l'appareil ne doit pas produire de brouillage, et (2) l'utilisateur de l'appareil doit accepter tout brouillage radioélectrique subi, même si le brouillage est susceptible d'en compromettre le fonctionnement.

### RSS-102 statement

This equipment complies with Industry Canada radiation exposure limits set forth for an uncontrolled environment.

Cet équipement est conforme à l'exposition aux rayonnements Industrie Canada limites établies pour un environnement non contrôlé.

## ONE-YEAR LIMITED WARRANTY

For complete warranty, visit [www.insigniaproducts.com](http://www.insigniaproducts.com).

## CONTACT INSIGNIA

1-877-467-4289 (U.S. and Canada) or 01-800-926-3000 (Mexico)

[www.insigniaproducts.com](http://www.insigniaproducts.com)

INSIGNIA is a trademark of Best Buy and its affiliated companies.

Distributed by Best Buy Purchasing, LLC

©2016 Best Buy. All rights reserved.

**Made in China**