

## Federal Communication Commission Interference Statement

This equipment has been tested and found to comply with the limits for a Class B digital device, pursuant to Part 15 of the FCC Rules. These limits are designed to provide reasonable protection against harmful interference in a residential installation. This equipment generates, uses and can radiate radio frequency energy and, if not installed and used in accordance with the instructions, may cause harmful interference to radio communications. However, there is no guarantee that interference will not occur in a particular installation. If this equipment does cause harmful interference to radio or television reception, which can be determined by turning the equipment off and on, the user is encouraged to try to correct the interference by one of the following measures:

- Reorient or relocate the receiving antenna.
- Increase the separation between the equipment and receiver.
- Connect the equipment into an outlet on a circuit different from that to which the receiver is connected.
- Consult the dealer or an experienced radio/TV technician for help.

This device complies with Part 15 of the FCC Rules. Operation is subject to the following two conditions: (1) This device may not cause harmful interference, and (2) this device must accept any interference received, including interference that may cause undesired operation.

### Radiation Exposure Statement:

The product comply with the FCC portable RF exposure limit set forth for an uncontrolled environment and are safe for intended operation as described in this manual. The further RF exposure reduction can be achieved if the product can be kept as far as possible from the user body or set the device to lower output power if such function is available.

FCC Caution: Any changes or modifications not expressly approved by the party responsible for compliance could void the user's authority to operate this equipment.

## BATTERY WARNING STATEMENT

Do not mix old and new batteries.  
Do not mix alkaline, standard (carbon-zinc), or rechargeable (ni-cad, ni-mh, etc) batteries.

Official Mossy Oak Licensed Product  
Distributed by Acrox Technologies Co.,Ltd.  
4F., No.89, Minshan St., Neihu Dist., Taipei City 114, Taiwan

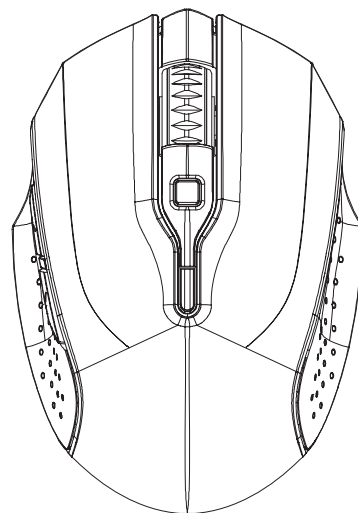


**MOSSY OAK**

# CAMO

## Wireless Silent Mouse

### User's manual for GM100



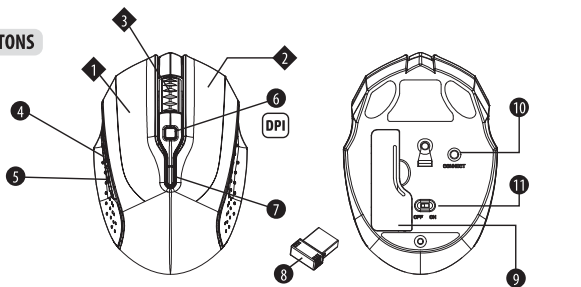
#### PACKAGE CONTENTS

- Wireless Mouse
- Nano Receiver
- 2 x AAA Batteries
- User's Manual

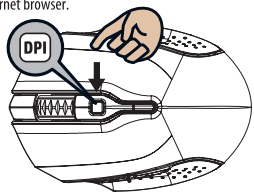
## OPERATING SYSTEM

\* Compatible with Windows XP and newer operating systems

### BUTTONS



1. Left Silent Button
2. Right Silent Button
3. Scrolling Wheel with Silent Button
4. Forward: Press this button to view the next page in your Internet browser.
5. Backward: Press this button to view the previous page in your Internet browser.
6. DPI Switch Key
  - a) 3 adjustable DPI by different color breathing effect on scroller
    - Green – 800 DPI
    - Blue – 1600 DPI
    - Red – 2400 DPI
  - b) DPI change: Breathing effect on and off on scroller after 10 sec\*Default is 1600 DPI
7. LED Indicator
  - a) Power on: On for 10 sec.
  - b) Re-pairing mode: Flash 10 seconds if disconnected
  - c) Low battery warning: Blinking for 10 sec.
8. Nano Receiver
9. Battery Cover
10. Connect Button
11. OFF/ON Switch

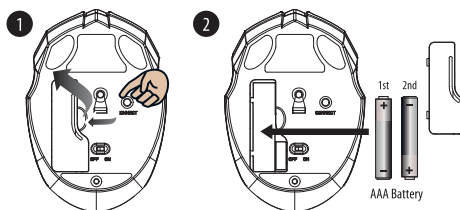


## SETUP YOUR WIRELESS MOUSE

**Step 1:** Take the BATTERY COVER off

**Step 2:** Insert the batteries as shown inside the battery storage

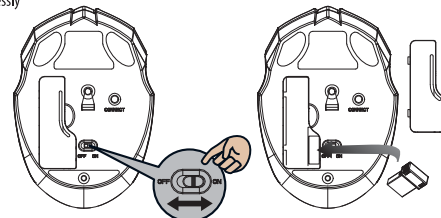
**Step 3:** Replace the battery cover



**Step 4:** Insert the NANO RECEIVER into your computer

**Step 5:** Turn on the Power Switch

**Step 6:** Your mouse will connect automatically, letting you use your mouse wirelessly



## SETUP THE CONNECTION BETWEEN YOUR WIRELESS MOUSE AND COMPUTER

If your wireless mouse has not been connected to your computer after completing the previous steps, the following information will help you to complete the connection

1. Turn off and turn on the POWER SWITCH on your mouse
2. Make sure the computer is on
3. Press the CONNECT BUTTON on the underside of the mouse
4. The LED indicator will flash 10 seconds to indicate the mouse is pairing with the nano receiver on the computer
5. Your mouse will connect automatically