



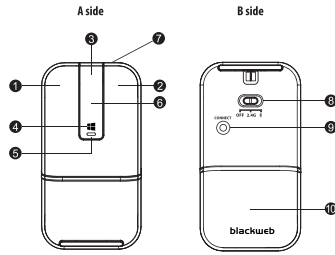
# TOUCH BT PRESENTER MOUSE

Model: BWA18H0014

## PRODUCT GUIDE

### SYSTEM REQUIREMENTS

- Windows® Xp/7/8.1/10 or later version
- Bluetooth
- AVAILABLE USB port



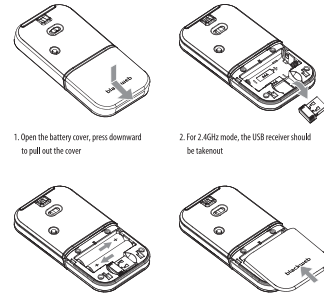
1. Left Click
2. Right Click
3. Middle-Click
4. Windows Key
5. LED Indicator
6. Touch Bar
7. Laser Pointer
8. Button switch for Bluetooth (2.4 GHz) / OFF
9. Pairing (Bluetooth / 2.4GHz)
10. Battery Cover

Ver.01 Rev.19/12/17

- 1 -

Ver.01 Rev.19/12/17

### ASSEMBLY



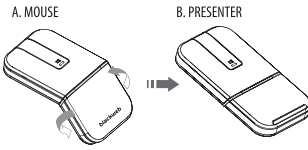
1. Open the battery cover, press downward to pull out the cover
2. For 2.4GHz mode, the USB receiver should be taken out
3. Insert AAA batteries x 2 into the compartment. Make sure they match the (+) and (-) symbols on the batteries with the (+) and (-) symbols inside the compartment
4. Put the battery cover back on by pushing the cover into the slot.

- 2 -

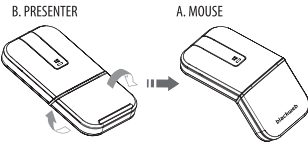
Ver.01 Rev.19/12/17

### USAGE MODES

1. When the mouse is rotated counter-clockwise (from A → B) it is switched to the Laser presenter mode



2. When the presenter is rotated clockwise (from B → A) it is switched back to the mouse mode

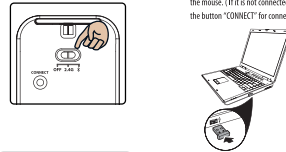


- 3 -

Ver.01 Rev.19/12/17

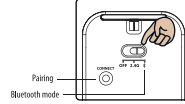
### 2.4GHz WIRELESS CONNECTION MODE

1. Set the switch in the middle position for the 2.4 GHz connection.
2. Take out the USB receiver and plug it into an available USB port on the computer. The computer will automatically identify the mouse. (If it is not connected, press the button "CONNECT" for connection)



### BLUETOOTH CONNECTION MODE

1. Set the switch to the right position for Bluetooth mode before connecting to all kinds of Bluetooth devices.



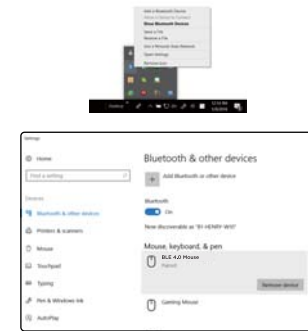
2. 1st time Pairing: Turn on the Bluetooth Setting of your devices (PC / Laptop / Mac / Android Tablet) Press "CONNECT" to enter Pairing Status, the LED indicator will flash Green / Red alternatively, you shall see "BLE 4.0 Mouse" in the BT list, follow the instructions below in the manual for the connection of each kind of device.

- 4 -

Ver.01 Rev.19/12/17

### FOR PC

1. Pairing: Select the Bluetooth icon in settings or taskbar at the lower right corner of the monitor and add a Bluetooth device
2. Press "CONNECT" to enter Pairing Status, the LED indicator will flash Green / Red alternatively. Wait for few seconds and you shall see "BLE 4.0 Mouse" in the list of devices for connection.
3. After the pairing is successful, you shall see "BLE 4.0 Mouse Connected" and can use the mouse normally. \* Paired Mouse will show as "Paired" when it is out of range or power off



- 5 -

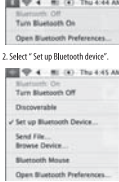
Ver.01 Rev.19/12/17

折線

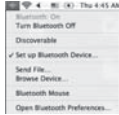
折線

### FOR MAC

1. Pairing: Click the Bluetooth icon at the upper right corner of the monitor, select "Turn Bluetooth On".



2. Select "Set up Bluetooth device".



3. The "Bluetooth Setup Assistant tab" will appear. Follow the instructions and click "continue".
4. Select "Mouse" then click "continue". The mouse needs to be in "discovery" mode to be detected, while the computer is searching for the mouse, press "CONNECT" to enter Pairing Status, the LED indicator will flash Green / Red alternatively. Wait for few seconds and you shall see "BLE 4.0 Mouse" in the list of devices for connection.
5. Select "BLE 4.0 Mouse" and press "continue". After successful pairing, click "Quit" to exit the tab.

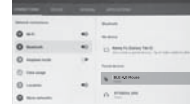


- 6 -

Ver.01 Rev.19/12/17

### FOR ANDROID TABLET

1. Pairing: Click the Bluetooth Setting icon on your Android tablet, turn on Bluetooth.



3. Press "CONNECT" to enter Pairing Status, the LED indicator will flash Green / Red alternatively. Wait for few seconds and you shall see "BLE 4.0 Mouse" in the list of devices for connection.
4. After the pairing is successful, you shall see "BLE 4.0 Mouse Connected" and can use the mouse normally. \* Paired Mouse will show as "Paired" when it is out of range or power off

### TO CONNECT WITH OTHER NEW DEVICES

- To connect with other new devices but you are still connected with current PC / Laptop / Mac / Android Tablet 1. Go to Bluetooth Settings of the original devices that already paired with "BLE 4.0 Mouse" and do the following steps
- A. Turn off the Bluetooth of the devices OR
  - B. Remove the Paired Mouse in the list then start "Pairing" again to connect with other new devices.

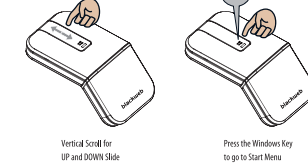


- 7 -

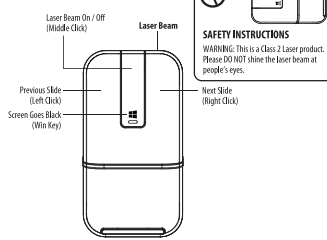
Ver.01 Rev.19/12/17

### USING THE DEVICE

#### 1. Touch Gesture of the Mouse



#### 2. Laser Presenter



- 8 -

Ver.01 Rev.19/12/17

### LED INDICATOR

- **Under 2.4GHz Mode**  
Pairing: Press "CONNECT" to enter Pairing Status, the LED indicator will flash Green / Red alternatively for 60 seconds, flash Green for 3 times after successful pairing then the light goes out.
- **Under Bluetooth Mode**  
Pairing: Press "CONNECT" to enter Pairing Status, the LED indicator will flash Green / Red alternatively for 10 mins, flash Green for 3 times after successful pairing then the light goes out.
- **Power On**: Green light (No movement for 5 mins → Go into Sleep Mode)
- **Battery Low**: Red light  
When the batteries are low, the LED light will blink red continuously. Please replace the batteries.

### TROUBLE SHOOTING

- Mouse is not working:
1. Is the USB receiver securely plugged into a USB port? Try changing USB ports.
  2. Check the orientation of the battery inside the mouse, or replace with new battery.
  3. Check whether the wireless mode switch button is in the correct position.
  4. In Bluetooth 4.0 mode, ensure your mouse is disconnected / removed with other devices before pairing (within 10M/32 Ft).
  5. If the mouse lost connection with PC in working or sleeping status, please re-pairing Bluetooth first or restart your computer, then Re-pairing Bluetooth again.

### PACKAGE CONTENTS

- Touch BT Presenter Mouse
- AAA Batteries x 2
- User's Manual

**Notice:** Max. Output < 0.9mW Wavelength 650nm



Complies with 21 CFR Chapter 1, Subchapter J, or complies with 21 CFR 1040.10 and 1040.11.

- 9 -

Ver.01 Rev.19/12/17

### Federal Communication Commission Interference Statement

This equipment has been tested and found to comply with the limits for a Class B digital device, pursuant to Part 15 of the FCC Rules. These limits are designed to provide reasonable protection against harmful interference in a residential installation. This equipment generates, uses and can radiate radio frequency energy and, if not installed and used in accordance with the instructions, may cause harmful interference to radio communications. However, there is no guarantee that interference will not occur in a particular installation. If this equipment does cause harmful interference to radio or television reception, which can be determined by turning the equipment off and on, the user is encouraged to try to correct the interference by one of the following measures:

- Reorient or relocate the receiving antenna.
- Increase the separation between the equipment and receiver.
- Connect the equipment into an outlet on a circuit different from that to which the receiver is connected.
- Consult the dealer or an experienced radio/TV technician for help.

This device complies with Part 15 of the FCC Rules. Operation is subject to the following two conditions: (1) This device may not cause harmful interference, and (2) this device must accept any interference received, including interference that may cause undesired operation.

### Radiation Exposure Statement:

The product complies with the FCC portable RF exposure limit set forth for an uncontrolled environment and is safe for intended operation as described in this manual. The further RF exposure reduction can be achieved if the product can be kept as far as possible from the user body or set the device to lower output power if such function is available.

FCC Caution: Any changes or modifications not expressly approved by the party responsible for compliance could void the user's authority to operate this equipment.

Wal-Mart Stores, Inc.,  
Bentonville, AR 72716  
Hotline: 1-800-925-6278

- 10 -

Ver.01 Rev.19/12/17



Ver.01 Rev.19/12/17