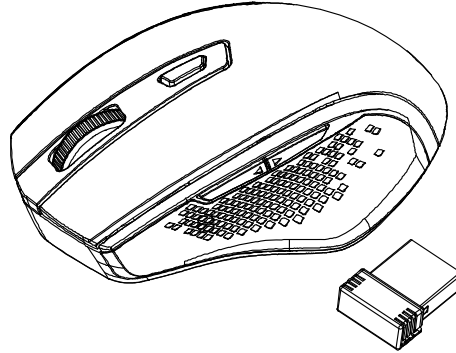


**Model Name: G6B**  
**Ergonomic Wireless Mouse - DPI**  
**adjustable**

***USER'S GUIDE***

**Ver.:1.00**



CAUTION: To use this product properly, please read the user's guide before installing.

## **Federal Communication Commission Interference Statement**

This equipment has been tested and found to comply with the limits for a Class B digital device, pursuant to Part 15 of the FCC Rules. These limits are designed to provide reasonable protection against harmful interference in a residential installation. This equipment generates, uses and can radiate radio frequency energy and, if not installed and used in accordance with the instructions, may cause harmful interference to radio communications. However, there is no guarantee that interference will not occur in a particular installation. If this equipment does cause harmful interference to radio or television reception, which can be determined by turning the equipment off and on, the user is encouraged to try to correct the interference by one of the following measures:

- Reorient or relocate the receiving antenna.
- Increase the separation between the equipment and receiver.
- Connect the equipment into an outlet on a circuit different from that to which the receiver is connected.
- Consult the dealer or an experienced radio/TV technician for help.

FCC Caution: Any changes or modifications not expressly approved by the party responsible for compliance could void the user's authority to operate this equipment.

This device complies with Part 15 of the FCC Rules. Operation is subject to the following two conditions: (1) This device may not cause harmful interference, and (2) this device must accept any interference received, including interference that may cause undesired operation.

### **Radiation Exposure Statement:**

The product comply with the FCC portable RF exposure limit set forth for an uncontrolled environment and are safe for intended operation as described in this manual. The further RF exposure reduction can be achieved if the product can be kept as far as possible from the user body or set the device to lower output power if such function is available.

**IC Notice:**

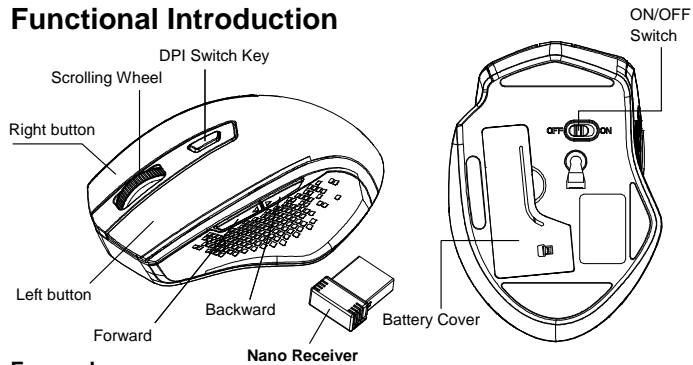
This device complies with Canada Industry licence-exempt RSS standard(s). Operation is subject to the following two conditions: (1) this device may not cause interference. and (2) this device must accept any interference. Including interference that may cause undesired operation of the device.

Le présent appareil est conforme aux CNR d'Industrie Canada applicables aux appareils radio exempts de licence. L'exploitation est autorisée aux deux conditions suivantes :

(1) l'appareil ne doit pas produire de brouillage; (2) l'utilisateur de l'appareil doit accepter tout brouillage radioélectrique subi, même si le brouillage est susceptible d'en compromettre le fonctionnement.

CAN ICES-3 (B) / NMB-3 (B)

# Functional Introduction



## Forward

Press this button to view the next page in your Internet browser.

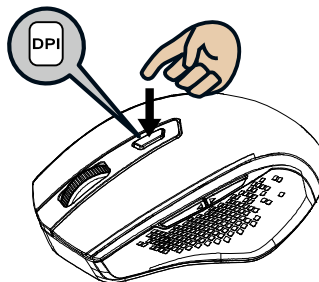
## Backward

Press this button to view the previous page in your Internet browser.

## DPI Switch

- a) 5 adjustable DPI
- The blink on key indicates the DPI setting in use

DPI	Blink
600 dpi	1
1000 dpi	2
1600 dpi	3
2400 dpi	4
3600 dpi	5



- b) Default is 1600 DPI

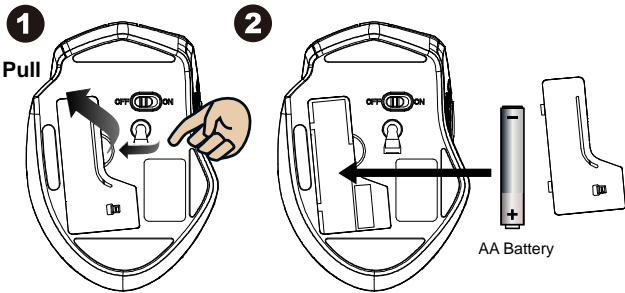
**Encrypted air-protocol with AES 128**

AES (Advance Encryption Standard) is a specification for the encryption of electronic data.

**Installing the batteries**

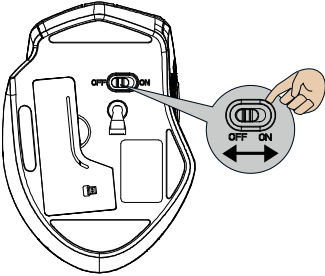
**Step 1:** Take the battery cover off.

**Step 2:** Insert the battery as shown inside the battery compartment.



**Step 3:** Replace the cover.

**Step 4:** Turn on power switch



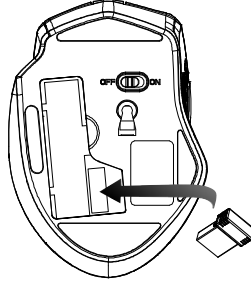
**\*\*Warning:**

\*Please insert the battery with the correct position according to the instruction labeled on the mouse.

**Step 5:** If you need to travel with your wireless mouse, made sure you turn off the POWER SWITCH.

## Setup the Connection between the Receiver and the Mouse

1. Insert the battery into the mouse, then follow the steps below.
2. In the meantime, a storage slot on the back to storage the receiver , take the nano receiver out.



3. Plug the Nano receiver into the USB port on your computer.

