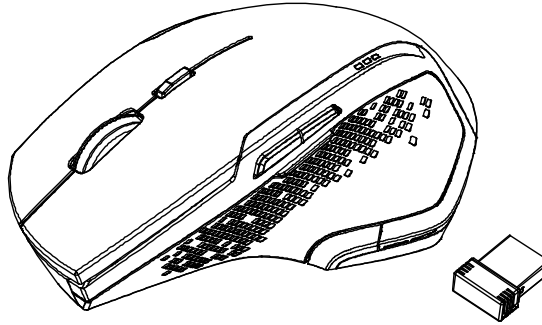


Model Name: GP8
Full-Size Ergonomic Wireless Mouse
with Fast Scrolling

USER'S GUIDE

Ver.:1.00



CAUTION: To use this product properly, please read the user's guide before installing.

Federal Communication Commission Interference Statement

This equipment has been tested and found to comply with the limits for a Class B digital device, pursuant to Part 15 of the FCC Rules. These limits are designed to provide reasonable protection against harmful interference in a residential installation. This equipment generates, uses and can radiate radio frequency energy and, if not installed and used in accordance with the instructions, may cause harmful interference to radio communications. However, there is no guarantee that interference will not occur in a particular installation. If this equipment does cause harmful interference to radio or television reception, which can be determined by turning the equipment off and on, the user is encouraged to try to correct the interference by one of the following measures:

- Reorient or relocate the receiving antenna.
- Increase the separation between the equipment and receiver.
- Connect the equipment into an outlet on a circuit different from that to which the receiver is connected.
- Consult the dealer or an experienced radio/TV technician for help.

FCC Caution: Any changes or modifications not expressly approved by the party responsible for compliance could void the user's authority to operate this equipment.

This device complies with Part 15 of the FCC Rules. Operation is subject to the following two conditions: (1) This device may not cause harmful interference, and (2) this device must accept any interference received, including interference that may cause undesired operation.

Radiation Exposure Statement:

The product comply with the FCC portable RF exposure limit set forth for an uncontrolled environment and are safe for intended operation as described in this manual. The further RF exposure reduction can be achieved if the product can be kept as far as possible from the user body or set the device to lower output power if such function is available.

IC Notice:

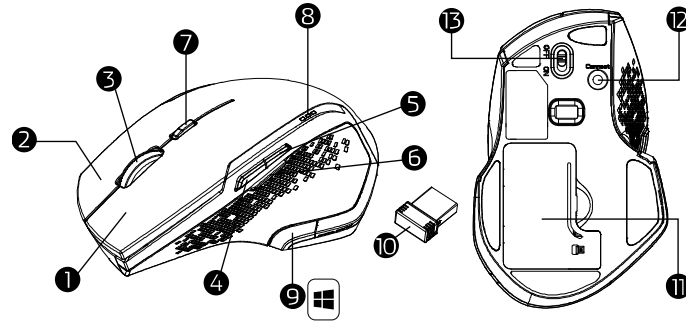
This device complies with Canada Industry licence-exempt RSS standard(s). Operation is subject to the following two conditions: (1) this device may not cause interference. and (2) this device must accept any interference. Including interference that may cause undesired operation of the device.

Le présent appareil est conforme aux CNR d'Industrie Canada applicables aux appareils radio exempts de licence. L'exploitation est autorisée aux deux conditions suivantes :

(1) l'appareil ne doit pas produire de brouillage; (2) l'utilisateur de l'appareil doit accepter tout brouillage radioélectrique subi, même si le brouillage est susceptible d'en compromettre le fonctionnement.

CAN ICES-3 (B) / NMB-3 (B)

Functional Introduction



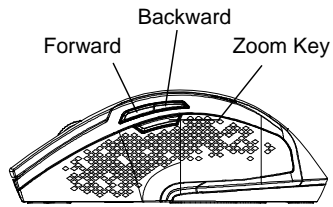
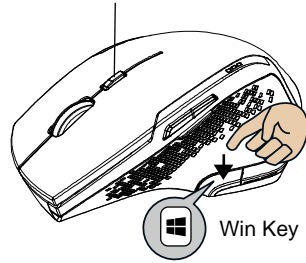
- | | |
|--|---------------------------------|
| 1. Left button | 8. Battery status LED Indicator |
| 2. Right button | 9. Win Key |
| 3. Scrolling Wheel | 10. Nano Receiver |
| 4. Forward | 11. Battery Cover |
| 5. Backward | 12. Connect Button |
| 6. ZOOM Key | 13. ON/OFF Switch |
| 7. Hyper scrolling Key & LED Indicator | |

Hyper Scrolling Key (Two scrolling speeds)

- a) Normal Scroll – LED Off
- b) Hyper Scrolling – LED on and off after 10 secs

* Default is Normal Scroll *

Hyper Scrolling Key (LED Indicator)



Forward

Press this button to view the next page in your Internet browser.

Backward

Press this button to view the previous page in your Internet browser.

Zoom Key (Zoom in /out)

Press zoom key + scroll to zoom in/ out .

Win Key

Windows button for one-touch access to the Start screen

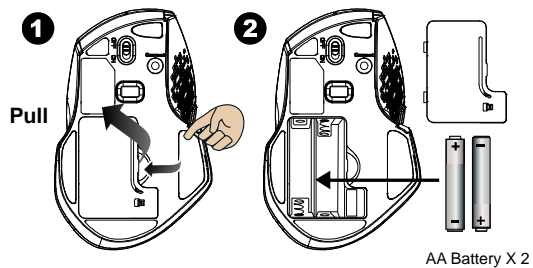
Encrypted air-protocol with AES 128

AES (Advance Encryption Standard) is a specification for the encryption of electronic data.

Installing the batteries

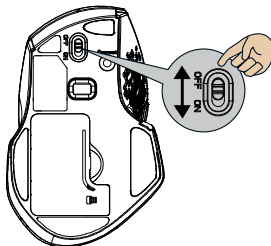
Step 1: Take the battery cover off.

Step 2: Insert the batteries as shown inside the battery compartment.



Step 3: Replace the cover.

Step 4: Turn on power switch



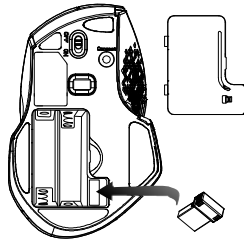
****Warning:**

*Please insert the battery with the correct position according to the instruction labeled on the mouse.

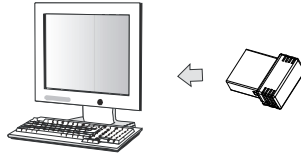
Step 5: If you need to travel with your wireless mouse, make sure you turn off the POWER SWITCH.

Setup the Connection between the Receiver and the Mouse

1. Insert the batteries into the mouse, then follow the steps below.
2. In the meantime, to open the mouse under the cover, take the nano receiver out.

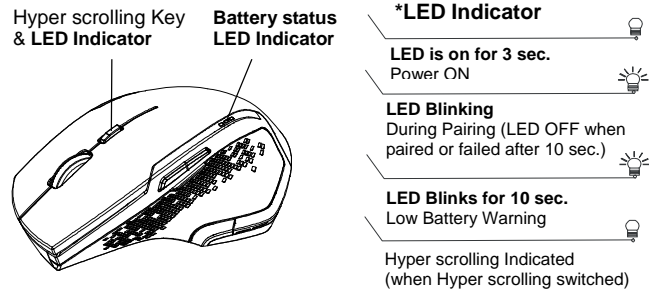


3. Plug the Nano receiver into the USB port on your computer.



4. If the mouse does not work, please put it into pairing mode.
5. Pairing: Re-plug the receiver into the USB port on your computer, then press the connect button on the mouse. If the mouse does not work after 10 seconds, pair them again. (The receiver has auto pairing function).

6. The LED indicator on mouse flashes steadily when it is in pairing mode and stops blinking when it is successfully paired with the receiver.
7. When low battery, the battery indicator on the mouse will start to blink.



Battery status LED Indicator	
Power ON	LED is on for 5 sec.
Wake up	LED blinks battery status for 5 sec.
3 LED Bright	80~100%
2 LED Bright	50~70%
1 LED Bright	20~40%