



Wireless Keyboard and Mouse with Nano Receiver

Model: ONA19HO015

PRODUCT GUIDE

CAUTION: To use this product properly, please read the user's guide before installation

Ver.01 Rev.11/21/18

Federal Communication Commission Interference Statement

This equipment has been tested and found to comply with the limits for a Class B digital device, pursuant to Part 15 of the FCC Rules. These limits are designed to provide reasonable protection against harmful interference in a residential installation. This equipment generates, uses and can radiate radio frequency energy and, if not installed and used in accordance with the instructions, may cause harmful interference to radio communications. However, there is no guarantee that interference will not occur in a particular installation. If this equipment does cause harmful interference to radio or television reception, which can be determined by turning the equipment off and on, the user is encouraged to try to correct the interference by one of the following measures:

- Reorient or relocate the receiving antenna.
- Increase the separation between the equipment and receiver.
- Connect the equipment into an outlet on a circuit different from that to which the receiver is connected.
- Consult the dealer or an experienced radio/TV technician for help.

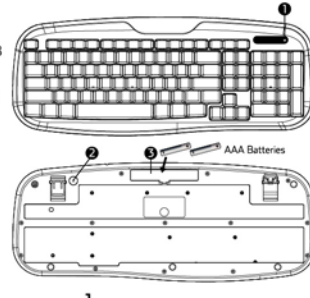
This device complies with Part 15 of the FCC Rules. Operation is subject to the following two conditions: (1) This device may not cause harmful interference, and (2) this device must accept any interference received, including interference that may cause undesired operation.

FCC Caution: Any changes or modifications not expressly approved by the party responsible for compliance could void the user's authority to operate this equipment.

Wal-Mart Stores, Inc.,
Bentonville, AR 72716
Hotline: 1-800-925-6278

Keyboard Button

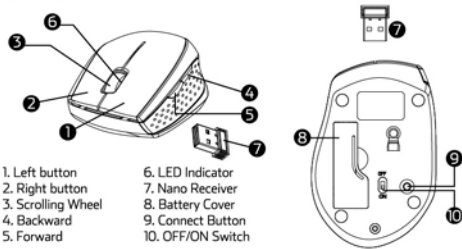
1. LED Indicator
2. Connect Button
3. Battery Cover



1

Ver.01 Rev.11/21/18

Mouse Button



1. Left button
2. Right button
3. Scrolling Wheel
4. Backward
5. Forward
6. LED Indicator
7. Nano Receiver
8. Battery Cover
9. Connect Button
10. OFF/ON Switch

Forward

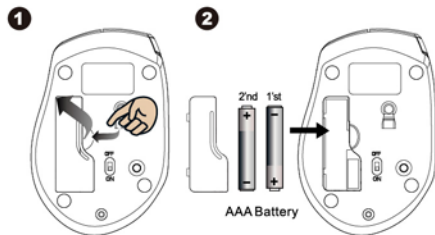
Press this button to view the next page of the Internet browser.

Backward

Press this button to view the previous page of the Internet browser.

Installing the batteries

- Step 1: Take the battery cover off.
Step 2: Insert the batteries as shown inside the battery compartment.
Step 3: Replace the cover.
Step 4: Turn on power switch.



2

Ver.01 Rev.11/21/18

**Warning:

- *Please insert the batteries with the correct position according to the instruction labeled in the Keyboard / Mouse.
- *The batteries shall not be exposed to excessive heat such as sunshine, fire or the like.

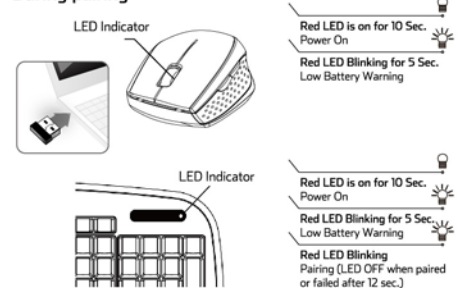
Battery warning statement:

Do not mix old and new batteries
Do not mix alkaline, standard (carbon-zinc), or rechargeable (ni-cad, ni-mh, etc) batteries.

Setup the Connection between the Receiver and the Mouse, Keyboard

1. Plug the Nano receiver into the USB port of your computer.
2. Insert the batteries into the mouse and keyboard, then follow the steps below.
3. If the mouse or the keyboard is not working, please put them into pair mode.
4. Pairing: Re-plug the receiver into the USB port of your computer, then press the connect button on the bottom of the mouse and keyboard. If the mouse or keyboard does not work after 10 seconds, Re-pair again. (The receiver has auto pairing function).
5. When the keyboard battery is low, the Low Power indicator flashes.

During pairing



3

Ver.01 Rev.11/21/18

Project Name: ONA19HO015(KDH+G2W) for Walmart USA Manual_Outline_20181210

REV. A

DATE: 2018.12.10

PROCESS COLORS



Jones