

Bluetooth Wireless Optical Mouse

OWNER'S GUIDE

Ver.1.0

Welcome

Your Bluetooth Wireless Optical Mouse works without a receiver for the ultimate in hassle-free mobility. It instantly connects to a PC/notebook enabled with Bluetooth wireless technology, providing up to 30 feet of cordless range. Power-saving sleep modes, a low-battery indicator light, and an on/off switch let you manage working power wisely. With newly developed optical sensor that replaces the traditional mouse ball, it accurately scans the surface of your computer many times per second for smooth and fast cursor tracking on your computer screen. The powerful 800-dpi optical sensor glides across almost any surface with no moving parts and no cleaning needed.

Safety Notice

1. Your product complies with FCC and CE rules.
2. This product has no serviceable parts. Use of controls or adjustments of procedures other than the user guide may result in danger.

Package Contents

- Bluetooth Wireless Optical Mouse
- 2 x AAA Rechargeable Batteries
- User's Guide

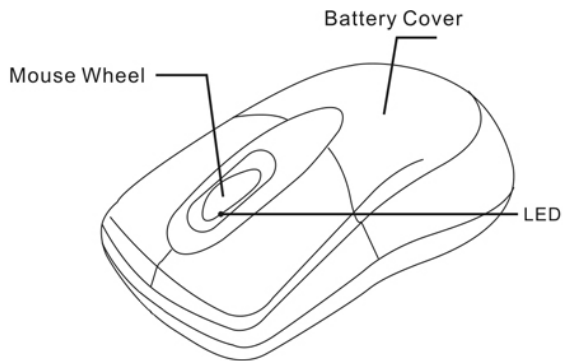
Minimum System Requirements





- Bluetooth-enabled Computer
- Windows 98/2000/ME/XP (Support WinXP SP2, Widcomm BTW, Toshiba Stack or IVT BlueSoleil Bluetooth Software)
- Mac OS X (10.2.8 or later) running Bluetooth software

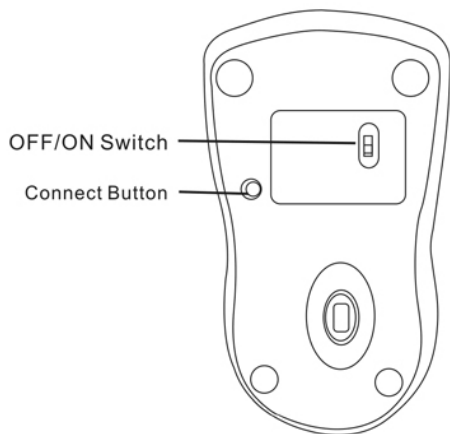
CAUTION:

Change or modifications not expressly approved by the manufacturer responsible for compliance could void the user's authority to operate the equipment

Functional Introduction



- 
Green LED On
Charging
- 
Green LED Off
Battery Charging Completed
- 
Red LED Blinking
Paired Link
Low in Battery
- 
Red LED Blinking Once
Turn the Switch On



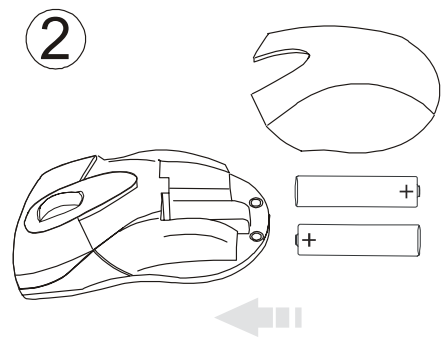
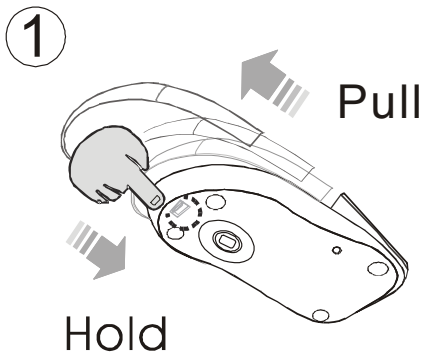
Battery and Power Management:

Installing the batteries

Step 1: Press the button on the mouse and pull the battery cover backward.

Step 2: Insert the batteries as shown inside the battery compartment.

Step 3: Replace the cover.



Charging the battery

When to charge

1. First-Time Use: Please charge at least 7* hours for the first time usage and charge at least 2* hours when battery runs low
2. Red LED Blinking: When the red LED starts blinking, it means the battery is nearly empty

Power saving features:

To conserve the battery power, the mouse offers power management functions as below :

1. The mouse goes into “Saving Mode” after 10 seconds of inactivity
2. The mouse powers down to “Sleep Mode” after 5 minutes of inactivity

Press one of the mouse buttons to wake it up while in Saving or Sleep Mode. There may be a slight delay while the mouse re-establishes Bluetooth connection from power saving or sleep mode.

	In Use	Saving Mode	Sleep Mode
Power Consumption	26mA-36mA@3V up on tracking sensitivity	5.5mA@3V	2mA@3V

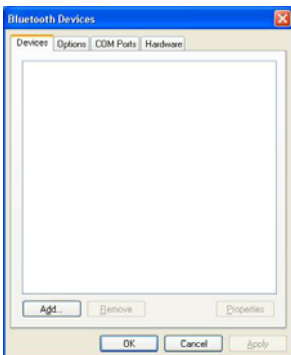
Establishing a Bluetooth Connection

The Bluetooth mouse can work in any Bluetooth working environment. Before connecting your Bluetooth mouse with your computer, make sure your computer has a working Bluetooth configuration that meets Bluetooth Specification v1.1 or higher with Human Interface Device (HID) profile. If your computer does not support Bluetooth, you need to obtain and install a commercially available Bluetooth adapter which converts your computer to a Bluetooth environment.

Pairing your Bluetooth mouse with your computer

Before pairing your Bluetooth mouse with your computer, you should read through the instructions that came with your Bluetooth hardware and software for detail how to pair a device to your specific Bluetooth configuration. Follow below steps to pairing your Bluetooth mouse under Windows XP/SP2 system.

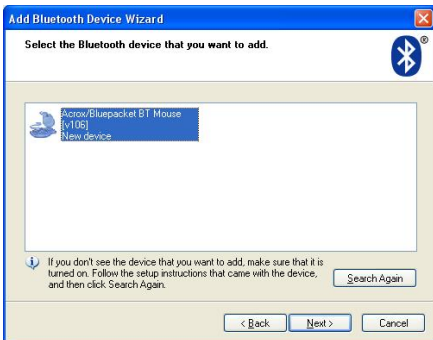
1. Attach or turn on the Bluetooth radio adaptor for your Windows XP computer.
2. Turn on the switch on the bottom of the mouse.
3. Click Start menu, click Control Panel and double click **“Bluetooth Devices”**.
4. On the **“Devices”** tab, click **“Add”**.



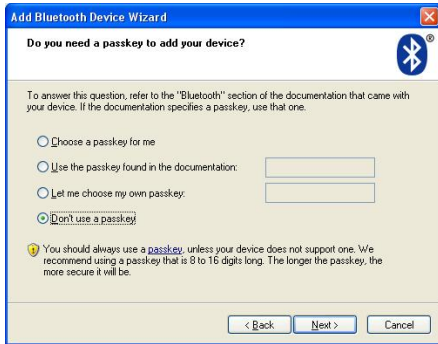
5. Select the **“My device is set up and ready to be found”** check box, and then click **“Next”**.



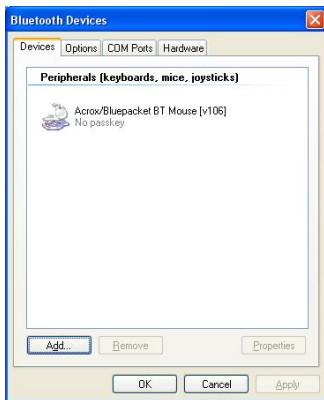
6. Press the connection button of the mouse and it starts paring with your PC/notebook. The Red LED light will blink when connecting. Click the icon that represents the Bluetooth mouse, and then click **“Next”**.



7. Click **“Don’t use a passkey”**, and then click **“Next”**. Check the documentation for the mouse for any passkey instructions.



8. You can find the Bluetooth mouse in the **“Devices”** tab when it connected. The Red LED will turn off automatically when the pairing is successfully done.



Note : Once the Bluetooth mouse is installed, you can either disconnect the wired mouse or leave it connected. (If you leave both mice connected, they will both work.)

Disconnecting Bluetooth mouse from your computer

If you would like to disconnect your Bluetooth mouse, just open the Bluetooth devices control panel and delete the pairing for the mouse.

Using your mouse

How to use the wheel

Your mouse has a wheel that functions both as a wheel for Windows Scrolling. For scrolling the screen, simply move the wheel.



Troubleshooting

A. Mouse does not work upon installation or is not detected

Try one or more of the following:

- Make sure you have installed the batteries correctly and turn the switch on. Replace a fresh set of batteries if it still doesn't work.
- Make sure that computer's Bluetooth is enabled.
- Press the connection button to reset the Bluetooth connection between your mouse and computer. Make sure it had been detected by the Operating Systems properly.

B. The screen cursor does not move properly

If your screen cursor lags behind the movement, then your Bluetooth connection may not be able to transmit all of the data from the mouse with the necessary speed. This may be caused by interference from other radio sources, obstructions in the radio wave path, excessive distance from the computer, or a combination of the above.

1. Low Battery : Make sure that the battery low indicator is NOT lit.

Replace batteries if the low battery indicator is lit.

2. Try the following actions to improve your Bluetooth connection and optimize your mouse performance:

- Remove any metallic objects from the line of sight between your computer and Bluetooth mouse.
- If you are using a computer with a built-in Bluetooth antenna, try reorienting the computer until you get a better data rate.
- Move the mouse closer to your Bluetooth device.
- Power off the mouse and turn it on again for better connection.
- Disconnect any Bluetooth audio devices, such as headsets, that may be connected to your computer.
- Switch off any other devices operating in the 2.4 GHz radio spectrum, such as Wi-Fi network, mobile telephones, etc., or move their antennas further away from your computer.

Federal Communication Commission

Interference Statement

This equipment has been tested and found to comply with the limits for a Class B digital device, pursuant to Part 15 of the FCC Rules. These limits are designed to provide reasonable protection against harmful interference in a residential installation. This equipment generates, uses and can radiate radio frequency energy and, if not installed and used in accordance with the instructions, may cause harmful interference to radio communications. However, there is no guarantee that interference will not occur in a particular installation. If this equipment does cause harmful interference to radio or television reception, which can be determined by turning the equipment off and on, the user is encouraged to try to correct the interference by one of the following measures:

- Reorient or relocate the receiving antenna.
- Increase the separation between the equipment and receiver.
- Connect the equipment into an outlet on a circuit different from that to which the receiver is connected.
- Consult the dealer or an experienced radio/TV technician for help.

FCC Caution: Any changes or modifications not expressly approved by the party responsible for compliance could void the user's authority to operate this equipment.

This device complies with Part 15 of the FCC Rules. Operation is subject to the following two conditions: (1) This device may not cause harmful interference, and (2) this device must accept any interference received, including interference that may cause undesired operation.