

# User's Manual

Bluetooth Stopwatch Presenter  
with Laser Pointer



SMK-LINK

  
INTERLINK  
ELECTRONICS

# Regulatory Compliance

This device complies with Part 15 of the FCC Rules.

Operation is subject to the following two conditions:

- (1) This device may not cause harmful interference, and
- (2) This device must accept any interference received, including interference that may cause undesired operation.

## FCC Certification

This equipment has been tested and found to comply with the limits for a Class B digital device, pursuant to Part 15 of the FCC rules. These limits are designed to provide reasonable protection against harmful interference when the equipment is operated in a residential installation. This equipment generates, uses and can radiate radio frequency energy and, if not installed and used in accordance with the instructions, may cause harmful interference to radio communications. However, there is no guarantee that interference will not occur in a particular installation. If this equipment does cause harmful interference to radio or television reception, which can be determined by turning the equipment off and on, the user is encouraged to try to correct the interference by one or more of the following measures:

- Reorient or relocate the receiving antenna.
- Increase the separation between the equipment and receiver.

- Connect the equipment into an outlet on a circuit different from that to which the receiver is connected.
- Consult the dealer or an experienced radio/TV technician for help.

Notice: Any changes or modifications not expressly approved by the party responsible for compliance could void the user's authority to operate the equipment. Extension cables are not recommended, if used, they must be shielded in order to comply with the emission limits.

## **IC Certification**

The term "IC" before the certification/registration number only signifies that the Industry Canada technical specifications were met.

## **Declaration of conformity**

Hereby, SMK-LINK Electronics Corporation, declares that this product is in compliance with the essential requirements and other relevant provisions of Directive 1999/5/EC.

All trademarks and registered trademarks mentioned in this document are the property of their respective owners.

Features and specifications are subject to change without notice.

© 2008 SMK-LINK Electronics, Inc.

# System Requirements

Hardware: Bluetooth-enabled system (via built-in Bluetooth capability or external Bluetooth adapter)

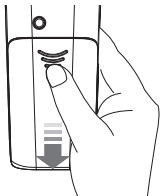
Operating System: Windows 2000, XP or Vista

Macintosh OS X or above (F5 SlideShow and Alt-Tab Application Switch not supported)

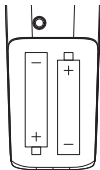
## Package Contents

- Bluetooth stopwatch presenter
- 2 x AAA batteries
- User's manual
- Carrying case

## Installing the Rechargeable Batteries (Supplied)

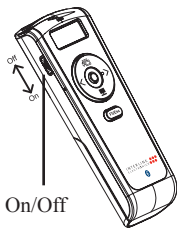


Sliding the battery cover off



Insert batteries to the correct polarities

- Open the battery compartment by pressing down the cover latch and sliding the door off the presenter.
- Insert the two supplied AAA batteries (included in the package) to the battery slots. Make sure the positive (+) and negative (-) ends of the batteries match the polarity markings inside the battery compartment.
- Close the battery cover back into position
- Power on the presenter by sliding the on/off switch to ON position.



Power switch on the presenter

# Connecting with Your Bluetooth Computer

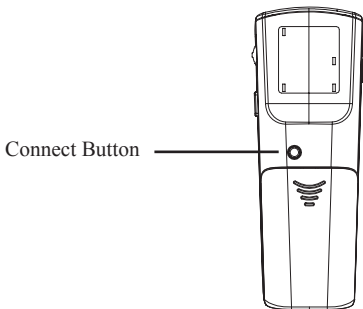
Before you can use Bluetooth devices for the first time you must connect your devices through a standard discovery and pairing process.

## Microsoft Windows Bluetooth Stack

1. Make sure your computer's Bluetooth radio is turned on.
2. Make sure your Bluetooth presenter is turned on (check the on/off switch located on the left-hand side of the presenter).
3. Right click the Bluetooth icon located on your Desktop or the System Tray, select ***Add a Bluetooth Device.***



light on the top of the presenter will flash, indicating the presenter is in discovery mode ready to be connected to the computer.

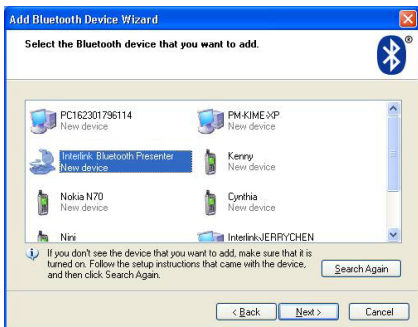


6. Check *My device is setup and ready to be found* and click *Next*. This must be performed within 20 seconds to avoid expiration of the discovery signal.

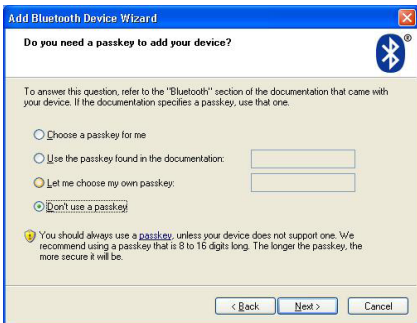




7. The Interlink Bluetooth Presenter will be discovered and listed on the screen. Highlight the name of the device and click *Next*.




8. The Wizard will ask you whether you like to add a passkey. Select ***Don't use a passkey*** as this product is not a keyboard product and does not support passkey. Click ***Next***.



9. Click ***Finish*** on the Wizard to complete the process.



10. The *Found New Hardware* Wizard appears and the OS will install the driver automatically. No other steps are necessary.
11. The Bluetooth icon will turn to green.  
 Your Bluetooth Stopwatch Presenter is ready to use.

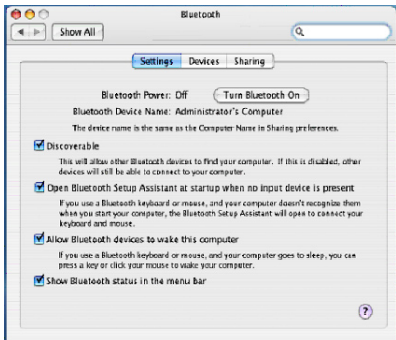
## Macintosh Bluetooth Software

1. Make sure your computer's Bluetooth radio is turned on.

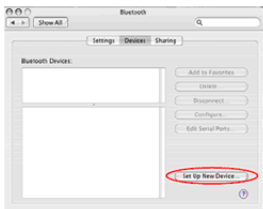
2. Make sure your presenter is turned on (check the on/off switch located on the left-hand side of the presenter.)
3. Click the Bluetooth icon located on your desktop or in the system bar.
4. Or, click the Apple icon and click **System Preferences**, then click on the Bluetooth icon.



5. Select **Turn Bluetooth On** to enable Bluetooth for your Macintosh computer if it's not already on.

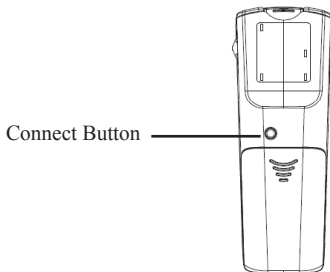


6. Select ***Set Up New Device***. Bluetooth Setup Assistant screen will show up. Click ***Continue***.

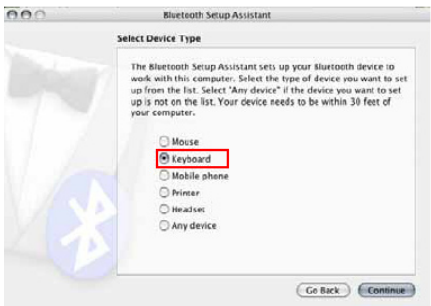


7. At this point, the presenter must be placed in discovery mode. Press the ***Connect***

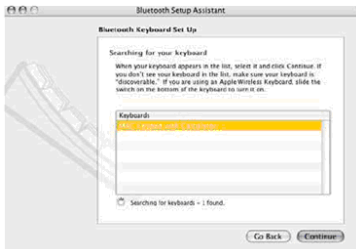
button located above the battery cover on the back of the presenter. The LED light on the top of the presenter will flash, indicating the presenter is in discovery mode ready to be connected to the computer.



8. The screen will ask you for the device type. Select ***Mouse*** from the device list and click ***Continue***.



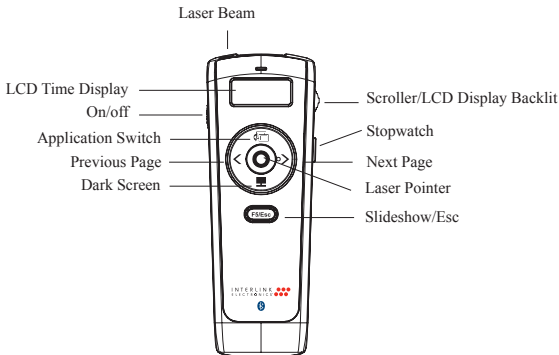
9. The computer will search for Bluetooth devices in the range (within 33 feet or 10 meters) and list each device on the screen.
10. Select *Interlink Bluetooth Presenter* and click *Continue*.









11. On the Conclusion screen, click **Quit** to exit setup. Your Bluetooth presenter is successfully installed.



## Using the Presenter





-  Slideshow toggle key starts a slideshow (F5) and exits from a slideshow (Esc). Note: in PowerPoint slideshow starts with page 1 when resumed in the middle of a presentation.
-  Next Page key to advance to the next slide.
-  Previous Page key to return to the previous slide.
-  Application Switch (Alt-Tab) key displays all the open windows and switches to the desired window by pausing over the selected window icon for 3 seconds.
-  Dark Screen toggle key blackens the screen and resumes the Presentation
-  Laser Pointer key triggers the laser beam. The laser beam emits for the duration that you press the key.

- Scroller on the side allows the presentation of a long document such as an Excel file. Scrolling one notch up or down advances one line at a time. To advance in rapid mode press up or down on the scroller for more than 1 second at a time. In PowerPoint the scroller serves as an alternative key for Next Page and Previous Page.
- Stopwatch control and LCD display (H:MM)
  - When presenter power is turned on: stopwatch on standby and LCD display turns on (the Hour and Minute separator “:” is constant.)
  - If stopwatch is not activated within 1 minute it automatically turns off. To turn on the stopwatch function, press the stopwatch button once. Note: the stopwatch is not yet activated.
  - To activate the stopwatch press the stopwatch button once; the Hour and Minute separator “:” flashes and the

LCD display shows time advancing by 1 minute increment.

- To pause the stopwatch, press the stopwatch button once; the Hour and Minute separator “:” stops flashing.
- To resume the stopwatch, press the stopwatch button once more; the Hour and Minute separator flashes again and the time advances.
- To power off the stopwatch function, hold down the stopwatch button for 3 seconds and the LCD display shuts down.
- When timer is on, hold down the scroller towards the presenter to activate the backlit on the LCD display for better visibility of time advanced.

## **Operating Tips & Trouble Shooting**

- Make sure the presenter is turned on by checking the on/off switch located at the

side of the presenter before using it.

- Conserve the battery power by switching the on/off switch to “OFF” position while traveling. If you will not use the presenter for a long period of time remove the batteries from the battery compartment.
- When the laser beam becomes dim it may be due to low battery power. Replace with 2 fresh batteries to ensure continuous presentation without power disruption.
- The presenter stays connected to your Bluetooth-enabled computer even when it's turned off once it's set up. If for any reason the connection to the system is lost, first check if the battery power is low by pressing the laser pointer, then check if Bluetooth Presenter icon is still displayed in My Bluetooth Places and verify that the presenter is within the range (up to 33 feet) from your computer. If the connection is lost it can be fixed by following the instructions in the **Setting up Bluetooth Connection** section to

reconnect the devices.

- If the connection is frequently lost under normal operation, contact your system vendor's technical support or check for Bluetooth stack update on your system vendor's website

**Warranty:** SMK-LINK Electronics warrants to the original end-user purchaser of the Product ("you") that the Product, excluding batteries, will be free from defects in materials or workmanship under normal use and service for one-year from date of purchase. Dated invoice or sales receipt is necessary to accompany the Product returned for warranty service consideration. Any Product repaired or replaced under the terms of the warranty is covered for the remainder of the original warranty period or ninety (90) days from the date of service or return shipping, whichever is longer. If the Product becomes defective in materials or workmanship during the warranty period, SMK-LINK Electronics will, at its option, either repair or replace it with a more current or upgraded model if the originally purchased model is not available. This warranty does not cover products which have been subjected to misuse, accident, physical damage, improper installation, abnormal operation or handling, neglect, inundation or fire, or when product regulatory label has been removed, altered or rendered illegible; nor does it cover accessory and consumable items. In no case shall SMK-LINK Electronics be liable for any indirect special, incidental, or consequential damages based upon breach of warranty, breach of contract, negligence, strict tort or any other legal theory. Such damages include, but are not limited to, loss of profits, loss of savings or revenues, inability to use the product or any associated equipment, cost of capital, cost of any substitute equipment, facilities or services, claims by third parties other than you, and injury to property. SMK-LINK Electronics's total liability for damages for any cause related to, or arising out of, the use or inability to use the product, shall not exceed the original price paid for the product even if SMK-LINK Electronics has been informed of such possibility. If your Product requires warranty service, you must

first contact SMK-LINK Electronics Product Support to receive an RMA Number. The contact information can be found on SMK-LINK Electronics website: <http://www.smklink.com/support/contactsupport.html>. This warranty does not affect your statutory right and you may also have other rights which vary from state to state. Unless modified in writing, signed by both you and SMK-LINK Electronics, this warranty is understood to be the complete and exclusive agreement between the parties, superseding all prior agreements, oral or written, and all other communications between the parties relating to the subject matter of this warranty.

## Product Support

SMK-Link Electronics Corporation  
3601-B Calle Tecate, Camarillo, CA 93012  
TEL: (888) 696-3500 FAX: (805) 987-6665

## Laser Warning



The LASER button located at the center of the control disc activates a laser which emits a red laser beam from the front of the presenter unit.

It is typically used as a pointer during presentations. The laser beam emits for the

duration that you press the button.

## Caution

Do not stare into laser beam for it can cause harm to your eyes. Do not aim the laser at people and procedures other than those specified therein may result in hazardous radiation exposure.

## **Thank You**

Thank you for purchasing the Bluetooth Stopwatch Presenter with Laser Pointer. We know you had other choices and we appreciate that you chose Interlink Electronics Bluetooth Calculator Keypad by SMK-LINK for your product needs. So that we may better serve you in the future, please register online at [www.smklink.com/register](http://www.smklink.com/register).