

27M RF Optical Mouse

OWNER'S GUIDE

Model Name:MPQ

Ver.:1.00

CAUTION: To use this mouse properly, please read the user's guide before installation

Mouse Buttons

1. Left button
2. Right button
- 3 : 800 DPI

Installation

Mouse:

1. Plug the RF receiver into the USB port of your computer.
2. Put the batteries into the mouse and switch it on.
3. Press the reset button on the receiver and then press the reset button on the mouse.
4. When the pairing completed, the mouse is ready to use.

Tilt Wheel Driver:

1. Insert the installation CD into your CD-ROM.
2. The installation program will launch automatically.
3. Click on "**Next**" to begin the installation.
4. Select the type of mouse to continue the installation.
5. The default installation folder is "**C: Program File\Tilt Mouse Software\1.0**". If you would like to select a different installation directory, click on "**Browse**". Then click on "**Next**" to continue.
6. The "**Start menu**" folder for the mouse has the default name of "**tech**". If you would like to change to a new folder, click on "**Browse**" to select a new folder. Click on "**Next**" to continue.
7. "**Ready to install**" dialogue appears. Click on "**Install**" to continue.
8. When installation completed, a "**Completing Installation**" dialogue box will appear, click on "**Finish**" to exit the installation wizard.

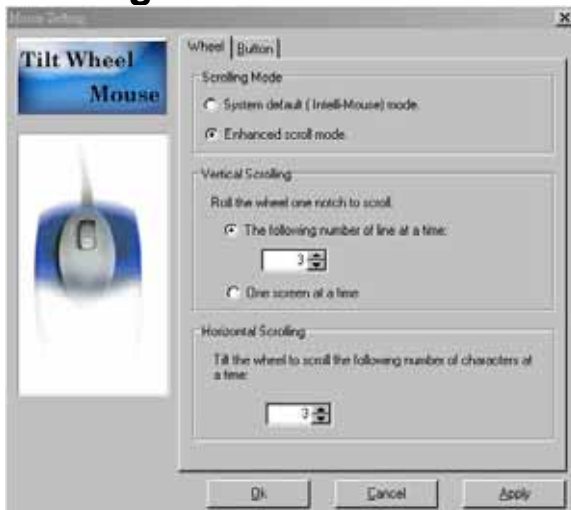
Mouse Buttons Program Software Instruction

After the driver installed, a “**mouse**” icon will appear on the task bar. Double click on it will launch the mouse settings program.



There are two categories in the mouse settings program: Wheel and Button. Users are able to change the buttons settings and scroll wheel settings.

Wheel Settings

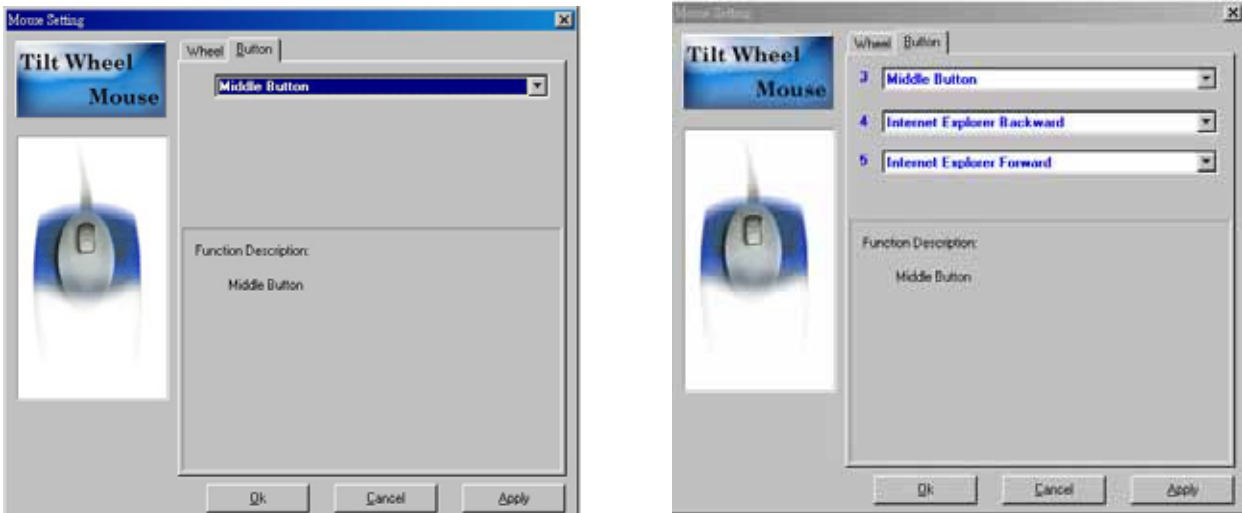


- By changing the scrolling setting, users can adjust the number of lines that will scroll at a time. Choosing “**One screen at a time**” will scroll down one page.
- In the Horizontal Scrolling, users can input the number of characters to select when using the tilt the wheel.
- Click “**Apply**” to activate the new settings and click on “**OK**” to close the dialogue box.

Buttons Setting

For 3 button mouse, users can only program the function of the scroll

wheel. Use the drop down menu to change the settings.



For mice with 5 or more buttons, users can program the scroll wheel, the 4th button, and the 5th button.

- The item 3 setting programs the function of the scroll wheel. Use the drop down menu to change the settings.
- The item 4 setting programs the 4th button on the side of the mouse. Use the drop down menu to change the settings.
- The item 5 setting programs the 5th button on the side of the mouse. Use the drop down menu to change the settings.

Federal Communication Commission Interference

Statement

This equipment has been tested and found to comply with the limits for a Class B digital device, pursuant to Part 15 of the FCC Rules. These limits are designed to provide reasonable protection against harmful interference in a residential installation. This equipment generates, uses and can radiate radio frequency energy and, if not installed and used in accordance with the instructions, may cause harmful interference to radio communications. However, there is no guarantee that interference will not occur in a particular installation. If this equipment does cause harmful interference to radio or television reception, which can be determined by turning the equipment off and on, the user is encouraged to try to correct the interference by one of the following measures:

- Reorient or relocate the receiving antenna.
- Increase the separation between the equipment and receiver.
- Connect the equipment into an outlet on a circuit different from that to which the receiver is connected.
- Consult the dealer or an experienced radio/TV technician for help.

FCC Caution: Any changes or modifications not expressly approved by the party responsible for compliance could void the user's authority to operate this equipment.

This device complies with Part 15 of the FCC Rules. Operation is subject to the following two conditions: (1) This device may not cause harmful interference, and (2) this device must accept any interference received, including interference that may cause undesired operation.