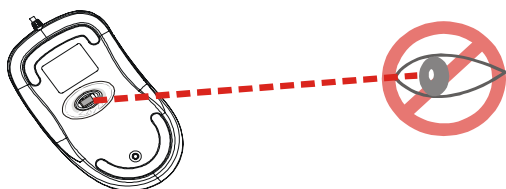
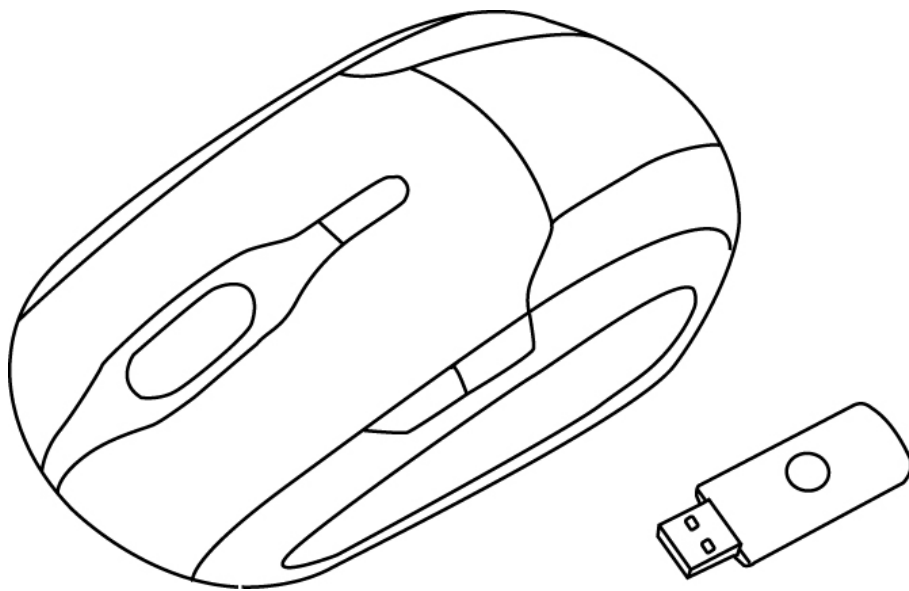


2.4GHz Wireless Mouse

USER'S GUIDE

Model Name:MW8

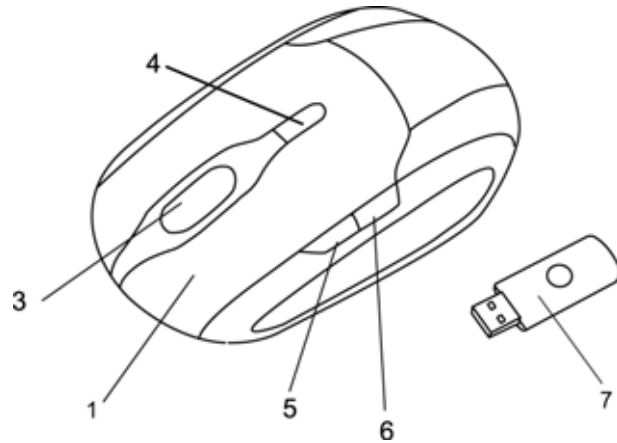
Ver.:1.00



Please DO NOT direct the laser beam at anyone's eye.

Mouse Buttons

1. Left button
2. Right button
3. Tilt Wheel
4. DPI switch
5. Forward
6. Backward
7. RF Receiver



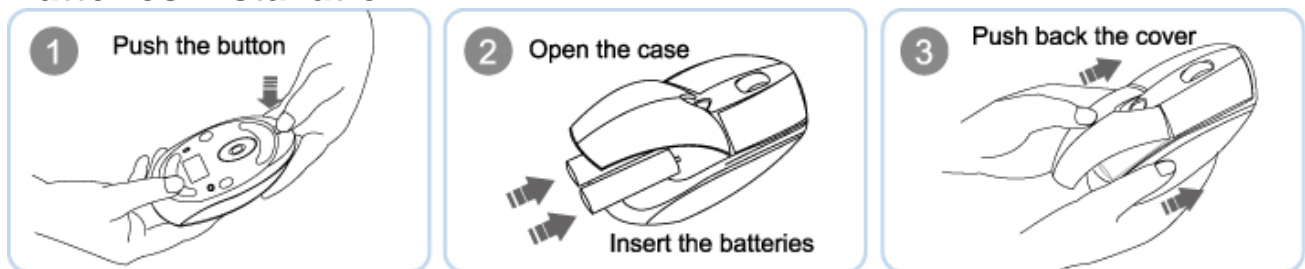
DPI Switch

The brightness of LED indicator on the DPI switch indicates the DPI setting in use. There are three different settings:

- Bright: 1600 DPI
- Dim: 1200 DPI
- No light: 800 DPI

The default setting is 1600 DPI. You can easily switch between DPI settings. In order to save power, the LED display will only last for 10 seconds.

Batteries Installation



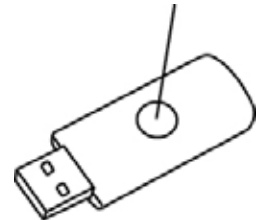
For Extra usage hours, use two AA batteries instead of two AAA Batteries.

Installation

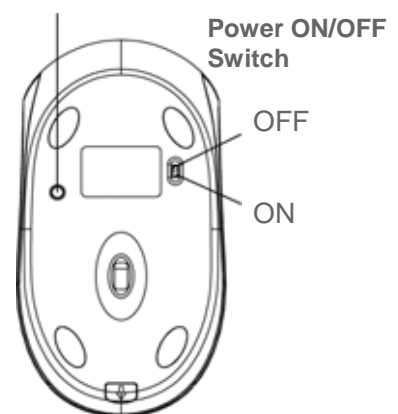
Mouse:

1. Plug the RF receiver into the USB port of your computer.
2. Put the batteries into the mouse and follow the Batteries installation.
3. The pairing only needs to be done when the mouse is not working when you install the mouse.
4. When the mouse is not working, you must pair it with the dongle. To do this, press the connect button on the dongle and the connect button under the mouse.
5. The LED indicators will flash regularly while pairing and will stop flashing after the pairing is completed.
6. The LED indicators will flash frequently when Any movement occurs.
7. When you want to save the power, adjust the Power ON/OFF switch to off position.
8. **Please see the readme for details.**

Connect Button



Connect Button



Federal Communication Commission Interference Statement

This equipment has been tested and found to comply with the limits for a Class B digital device, pursuant to Part 15 of the FCC Rules. These limits are designed to provide reasonable protection against harmful interference in a residential installation. This equipment generates, uses and can radiate radio frequency energy and, if not installed and used in accordance with the instructions, may cause harmful interference to radio communications. However, there is no guarantee that interference will not occur in a particular installation. If this equipment does cause harmful interference to radio or television reception, which can be determined by turning the equipment off and on, the user is encouraged to try to correct the interference by one of the following measures:

Reorient or relocate the receiving antenna.

Increase the separation between the equipment and receiver.

Connect the equipment into an outlet on a circuit different from that

to which the receiver is connected.

Consult the dealer or an experienced radio/TV technician for help.

FCC Caution: Any changes or modifications not expressly approved by the party responsible for compliance could void the user's authority to operate this equipment.

This device complies with Part 15 of the FCC Rules. Operation is subject to the following two conditions: (1) This device may not cause harmful interference, and (2) this device must accept any interference received, including interference that may cause undesired operation.